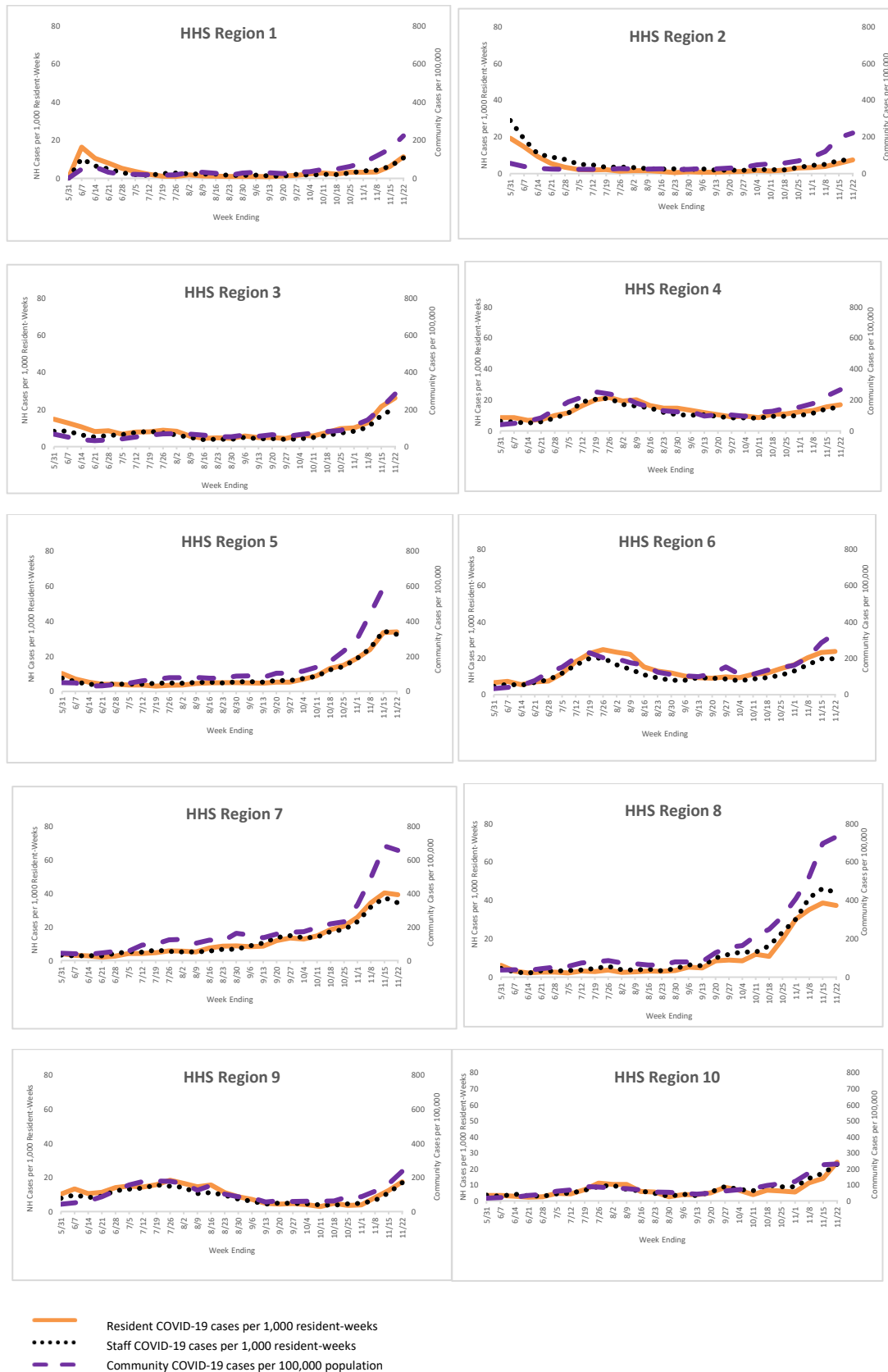


SUPPLEMENTARY FIGURE. COVID-19 cases* per 1,000 resident-weeks[†] among residents and staff in nursing homes and per 100,000 population,[§] by HHS region[¶] — United States, May 25–November 22, 2020



Abbreviation: COVID-19 = coronavirus disease 2019; HHS = United States Department of Human Health Services.

* Confirmed COVID-19 cases were diagnosed by a positive SARS-CoV-2 viral nucleic acid or antigen test.

[†] Resident-weeks were calculated as the total number of occupied beds for the entire week, on the day data were reported.

[§] Community COVID-19 rates per 100,000 population were calculated for each of the ten HHS regions as the total number of cases reported in a week over the region’s estimated population, using data available at USAFacts.org

[¶] U.S. Department of Health and Human Services (HHS). Calculations of cases per 100,000 population in Region 2 excluded cases reported from Puerto Rico, and in HHS Region 4 excluded cases reported from Guam.