

Coronavirus Disease 2019 (COVID-19)

CDC COVID Data Tracker

Maps, charts, and data provided by the CDC

Case Trends ▾

County View

Laboratory ▾

Global Cases and Deaths ▾

Community Impact ▾

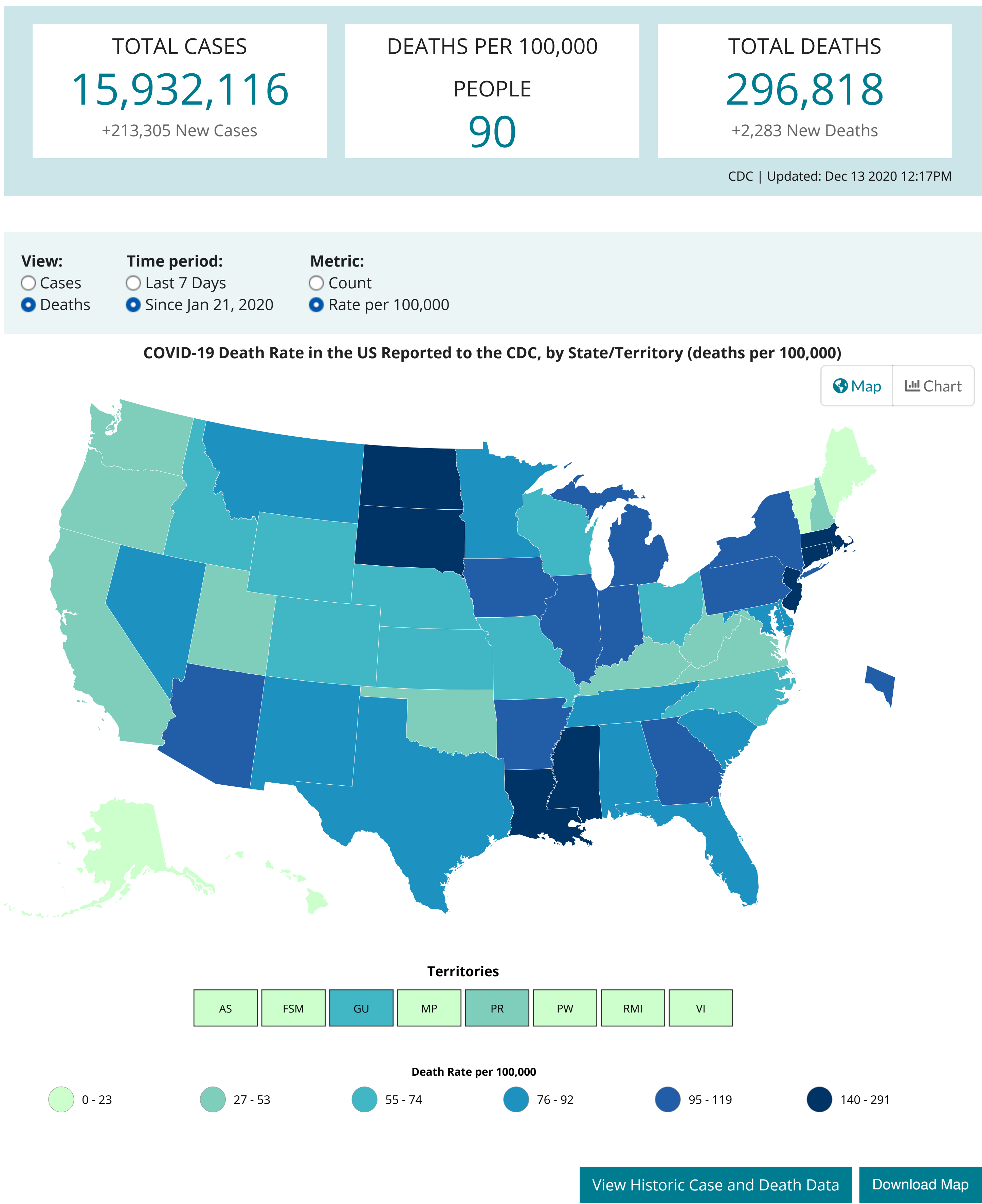
Unique Populations ▾

COVID-19 Home

- Cases and Deaths by State
- US and State Trends
- Compare State Trends
- Demographics
- Trends by Population Factors
- Forecasting
- Trends in ED Visits

United States COVID-19 Cases and Deaths by State

Reported to the CDC since January 21, 2020







Data Table for Death Rate by State/Territory	
CDC   Updated: Dec 13 2020 12:17PM	
Download Data	
State/Territory ↕	Death Rate per 100,000 ↕
New York City*	291
New Jersey	199
Massachusetts	163
North Dakota	151
Connecticut	150
Louisiana	145
Rhode Island	142
Mississippi	140
South Dakota	140
Illinois	119
Michigan	112
Arizona	102
District of Columbia	101
Iowa	101
Indiana	100
Pennsylvania	97
Arkansas	96
New York*	96
Georgia	95
Florida	92
South Carolina	92
New Mexico	91
Delaware	84
Maryland	84
Alabama	83
Nevada	83
Texas	82
Tennessee	79
Minnesota	78
Montana	76
Wisconsin	74
Missouri	73
Kansas	71
Nebraska	70
Guam	69
Colorado	67
Idaho	66
Ohio	63
North Carolina	55
Wyoming	55
West Virginia	53
California	52
Virginia	51
Kentucky	49
Oklahoma	48
New Hampshire	44
Puerto Rico	39
Washington	38
Utah	32
Oregon	27
Alaska	23
Virgin Islands	21
Maine	19
Hawaii	18
Vermont	15
Northern Mariana Islands	3
American Samoa	0
Federated States of Micronesia	0
Palau	0
Republic of Marshall Islands	0

[View and Download](#) COVID-19 Case Surveillance Public Use Data

**Data Sources, References & Notes:** Total cases are based on aggregate counts of COVID-19 cases reported by state and territorial jurisdictions to the Centers for Disease Control and Prevention (CDC) since January 21, 2020, with the exception of persons repatriated to the United States from Wuhan, China, and Japan. The numbers are confirmed and probable COVID-19 cases as reported by U.S. states, U.S. territories, New York City, and the District of Columbia from the previous day. \*Counts for New York City and New York state are shown separately; data for New York state show total cases and deaths for the State excluding data for NYC. When not available to CDC this is annotated by N/A. Rates are calculated using U.S. Census Bureau, 2018 American Community Survey 1-year estimates and are shown as cases/100,000 people. The map shows total cases per state, new cases in the last 7 days per state, and the rate (cases/100,000) per state. The 7-day moving average of new cases (current day + 6 preceding days / 7) was calculated to smooth expected variations in daily counts. Demographic data for deaths is based on a subset of cases where case-level data is available. Case numbers reported on other websites may differ from what is posted on CDC's website because CDC's overall case numbers are validated through a confirmation process with each jurisdiction. Differences between reporting jurisdictions and CDC's website may occur due to the timing of reporting and website updates. The process used for finding and confirming cases displayed by other sites may differ.

HAVE QUESTIONS?

-  Visit CDC-INFO
-  Call 800-232-4636
-  Email CDC-INFO
-  Open 24/7



CDC INFORMATION

- About CDC
- Jobs
- Funding
- Policies
- File Viewers & Players

Privacy

- FOIA
- No Fear Act
- OIG
- Nondiscrimination
- Accessibility

CONNECT WITH CDC

-     
-  