

Coronavirus Disease 2019 (COVID-19)

CDC COVID Data Tracker

Maps, charts, and data provided by the CDC

Case Trends ▾ County View Laboratory ▾ Global Cases and Deaths ▾ Community Impact ▾ Unique Populations ▾ COVID-19 Home

Cases and Deaths by State US and State Trends Compare State Trends Demographics Trends by Population Factors Forecasting Trends in ED Visits

Compare Trends in COVID-19 Cases and Deaths in the US

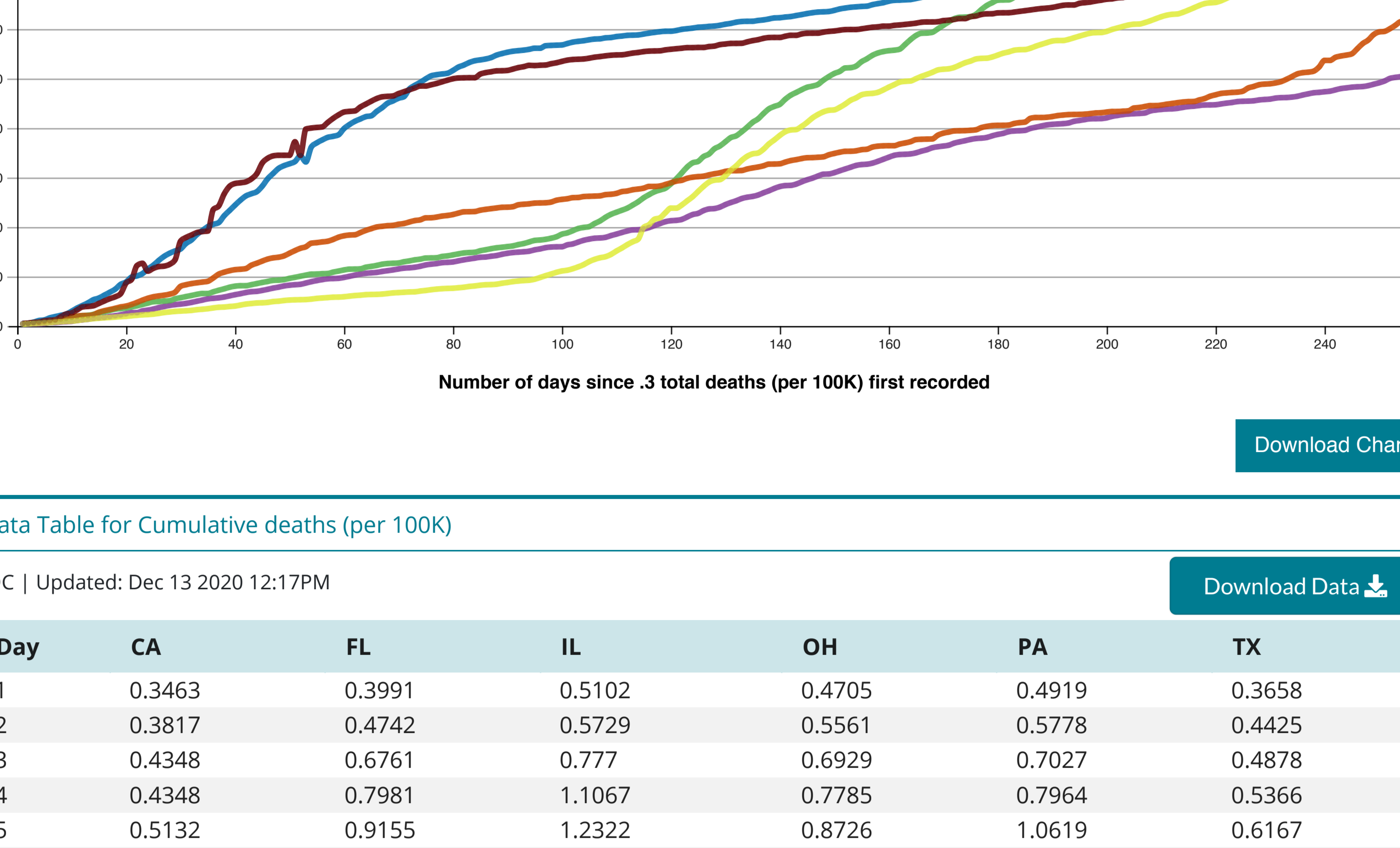
Reported to the CDC by State or Territory

View: Cases Daily **Measure:** Cumulative **Metric:** Raw Totals Rate per 100,000 **Scale:** Linear Logarithmic

Select up to 6 states or territories:
 California Florida Illinois Ohio Pennsylvania Texas
 Show full US Data (available only in logarithmic scale)

Cumulative deaths attributed to Covid-19, reported to CDC, in CA, FL, IL, OH, PA, and TX

Cumulative deaths (per 100K), by number of days since .3 total deaths (per 100K) first recorded.



[Download Chart](#)

Data Table for Cumulative deaths (per 100K)

CDC | Updated: Dec 13 2020 12:17PM

[Download Data](#)

Day	CA	FL	IL	OH	PA	TX
1	0.3463	0.3991	0.5102	0.4705	0.4919	0.3658
2	0.3817	0.4742	0.5729	0.5561	0.5778	0.4425
3	0.4348	0.6761	0.777	0.6929	0.7027	0.4878
4	0.4348	0.7981	1.1067	0.7785	0.7964	0.5366
5	0.5132	0.9155	1.2322	0.8726	1.0619	0.6167
6	0.6826	1.0376	1.6482	1.018	1.1712	0.6933
7	0.6977	1.1925	1.9072	1.2148	1.2649	0.7874
8	0.8064	1.3897	2.1505	1.4286	1.874	0.885
9	0.8671	1.5165	2.4095	1.6511	2.4205	0.9442
10	0.9455	1.7418	2.9825	1.8222	2.6392	0.9999
11	1.1174	1.9672	3.6261	1.9761	3.2482	1.0789
12	1.2438	2.094	4.1441	2.113	3.8572	1.1262
13	1.3676	2.1644	4.6778	2.1216	3.9588	1.3692
14	1.5395	2.3428	5.3135	2.2927	4.0915	1.4912
15	1.6457	2.6808	5.651	2.7717	4.56	1.5783
16	1.7367	2.8827	6.2318	3.0883	5.0519	1.6619
17	1.9162	3.1362	6.8126	3.3278	5.5204	1.7246
18	2.0755	3.4086	7.4405	3.5759	5.903	1.8013
19	2.2499	3.5118	8.4137	3.8582	6.5276	1.8919
20	2.4901	3.6339	8.9003	4.0293	6.8627	1.9546
21	2.71	3.864	9.8814	4.3544	9.4011	2.0661
22	2.71	4.0706	10.1247	4.765	12.212	2.1706
23	3.0538	4.3523	10.5878	5.2184	12.6649	2.2577
24	3.2055	4.6339	11.5218	5.6119	11.0954	2.31
25	3.4229	4.911	12.2831	5.9028	11.6498	2.404
26	3.7136	4.9532	13.2485	6.0824	12.0012	2.5504
27	3.9487	5.0424	14.0883	6.2278	12.1027	2.7246
28	4.1737	5.1081	14.7083	6.4417	12.4697	2.843
29	4.3229	5.4978	15.1714	6.8352	13.3989	2.951
30	4.4366	5.7185	15.5638	8.0158	17.139	3.0207
31	4.5731	5.9532	16.6783	8.3409	17.8964	3.0799
32	4.7703	6.1692	17.3847	8.5718	18.3805	3.1566
33	5.0105	6.404	18.4835	8.7344	18.8802	3.3029
34	5.2405	6.5683	19.2841	8.8798	19.0832	3.39
35	5.4883	6.5683	20.0846	9.0338	19.1925	3.498
36	5.5995	6.9063	20.5477	9.7096	23.5183	3.6548
37	5.6981	7.2256	20.893	10.4795	24.2522	3.7907
38	5.8574	7.512	22.2744	10.8731	26.6728	3.8325
39	6.0975	7.8359	23.3418	11.1725	28.2344	3.9475
40	6.3301	8.0519	24.4171	11.3863	28.7966	4.0346
41	6.5349	8.1458	25.4374	11.4719	28.945	4.2367
42	6.77	8.1458	26.2851	11.6088	29.1324	4.4318
43	6.9393	8.3524	26.7324	12.2846	29.718	4.5467
44	7.0025	8.5777	27.1484	12.6867	30.7877	4.6548
45	7.1972	8.8031	28.2629	13.123	32.935	4.6931
46	7.4171	9.0003	29.762	13.525	33.9032	4.7697
47	7.6649	9.2209	30.8294	13.7731	34.3795	4.9439
48	7.857	9.2632	31.8497	13.9014	34.9666	5.0171
49	8.0997	9.3759	32.407	14.1752	34.9666	5.1565
50	8.2438	9.6341	32.7837	14.7141	34.9666	5.247
51	8.3474	9.8407	33.2311	15.236	37.2217	5.2923
52	8.4283	10.066	34.3691	15.7065	34.9666	5.3202
53	8.6862	10.282	33.1605	16.0145	39.7906	5.3516
54	8.9542	10.4839	36.1586	16.733	40.0992	5.4422
55	9.1766	10.5027	37.0063	16.8443	40.1263	5.578
56	9.3738	10.5731	37.5949	16.9982	40.2278	5.6651
57	9.5407	10.606	38.1129	17.1266	41.1101	5.7418
58	9.5937	10.8877	38.3327	17.4859	41.9534	5.8254
59	9.6418	11.0989	38.6388	17.9478	42.664	5.8463
60	9.8187	11.329	39.8946	18.2301	43.234	5.916
61	10.0437	11.4886	40.703	18.3841	43.3745	6.0414
62	10.2839	11.5074	41.3623	18.4354	43.4682	6.1564
63	10.5063	11.5497	41.8332	18.8717	44.249	6.2296
64	10.6504	11.8783	42.3041	19.1166	44.8346	6.3376
65	10.7465	12.0473	42.4768	19.6673	45.4203	6.3759
66	10.835	12.2398	43.3637	20.0095	45.959	6.3968
67	11.0246	12.4887	44.1171	20.1464	46.3104	6.456
68	11.1788	12.6201	45.0197	20.2747	46.4041	6.5675
69	11.3381	12.6765	45.4828	20.3346	46.4822	6.6895
70	11.5251	12.7328	46.0244	20.5656	46.9585	6.7557
71	11.6945	12.9816	46.3383	20.711	47.3333	6.8184
72	11.7628	13.1507	47.8923	21.019	47.7315	6.8846
73	11.874	13.3713	48.6301	21.3013	48.1141	6.909
74	12.0737	13.5075	49.2344	21.4553	48.4967	7.0692
75	12.3391	13.7328	49.9408	21.8488	48.4967	7.1842
76	12.4959	13.761	50.553	21.8744	48.7466	7.334
77	12.6122	13.7939	50.7806	22.0113	49.0042	7.456
78	12.7992	14.0521	50.9297	22.2166	49.34	7.5431
79	12.865	14.1695	51.0721	22.3364	49.6679	7.6023
80	12.9459	14.3713	51.6361	22.5246	49.9646	7.6371
81	13.1658	14.5732	52.319	22.8155	50.1208	7.7347
82	13.3731	14.761	52.7271	23.0721	50.1572	7.8357
83	13.5501	14.8408	53.2451	23.0978	50.1755	7.9995
84	13.7118	14.8972	53.5983	23.132	50.1755	8.097
85	13.8913	15.2024	53.771	23.3972	50.8938	8.2434
86	13.9419	15.4042	53.9593	23.5683	51.1983	8.3374
87	14.1062	15.6202	54.2419	23.7137	51.3701	8.3723
88	14.2377	15.8033	54.7363	23.8506	51.5575	8.4455
89	14.493	15.916	55.0503	23.9875	51.5809	8.644
90	14.6927	16.0522	55.3171	24.0131	51.6434	8.7973
91	14.8444	16.1836	55.5212	24.1072	51.9167	8.9715
92	14.9278	16.4559	55.6389	24.4922	52.2134	9.0865
93	15.0062	16.6672	55.7488	24.6034	52.4086	9.1876
94	15.1174	16.9818	55.9136	24.6889	52.6741	9.2503
95	15.3955	17.2963	56.1334	24.8344	52.6272	9.4593
96	15.58	17.3808	56.1334	24.8686	52.6975	9.8008
97	15.8328	17.517	56.6279	24.9028	52.7365	10.1666
98	15.9592	17.7377	56.6985	25.0397	52.9942	10.4976
99	16.0047	18.0334	56.7456	25.4075	53.1894	10.8425
100	16.0199	18.5593	56.7927	25.5872	53.4705	11.1212
101	16.4016	18.8222	57.0831	25.7155	53.7204	11.2711
102	16.5887	19.2588	57.3656	25.9379	53.8531	11.5742
103	16.9654	19.7048	57.5226	25.9722	53.9078	11.9574
104	17.3193	19.9161	57.6482	26.1604	53.9624	12.4069
105	17.5569	20.0804	57.8365	26.2117	54.1186	13.0131
106	17.7389	20.7002	57.9857	26.2545	54.3216	13.466
107	17.7971	21.226	58.0328	26.3058	54.4465	13.7901
108	17.9159	21.9584	58.229	26.5453	54.5949	14.0061
109	18.2698	22.5594	58.2918	26.6223	54.712	14.4625
110	18.5681	22.9819	58.488	26.7934	54.7745	15.1489
111	18.8968	23.3904	58.59	27.1527	54.7979	15.7516
112	19.2001	23.813	58.7313	27.281	54.9541	16.3454
113	19.4276	24.4421	58.7705	27.5377	55.1493	17.0198
114	19.4504	25.0947	58.8176	27.6745	55.2742	17.5529
115	19.6046	25.9069	58.9981	27.8542	55.446	19.046
116	19.8953	26.5407	59.1787	28.2049	55.5475	20.476
117	20.2922	27.1229	59.3356	28.2049	55.5787	21.5666
118	20.6942	27.4844	59.4691	28.2905	55.61	21.8592
119	21.0759	27.846	59.5632	28.607	55.7973	22.887
120	21.2756	28.7192	59.5711	28.9321	55.9223	23.8208
121	21.3489	29.7333	59.7124	29.2743	56.0316	23.8208
122	21.5335	30.9212	59.9478	29.4454	56.1331	24.4444
123	22.0315	32.1278	60.0734	29.8474	56.2502	25.298
124	22.5219	32.9682	60.199	30.0699	56.2502	26.1203
125	22.7646	33.2593	60.3716	30.1896	56.2893	27.1864
126	23.3182	34.2358	60.4344	30.2752	56.2893	28.2072
127	23.6519	34.7523	60.5443	30.5404	56.4689	29.0678
128	23.7328	35.8086	60.615	30.7628	56.5626	29.472
129	24.0185	36.372	60.7641	30.951	56.8593	29.58
130	24.5291	37.2171	60.9838	31.2419	56.9764	30.3465
131	24.9488	38.0716	61.1487	31.3287	57.1013	31.4753
132	25.3078	38.4331	61.392	31.3873	57.1091	32.3638
133	25.7577	39.2454	61.5332	31.4215	57.1326	33.4543
134	26.0206	40.1562	61.5725	31.7209	57.4058	34.2835
135	26.1875	41.1515	61.5803	31.9434	57.6635	34.7817
136	26.463	41.8464	61.7373	32.123	57.8509	34.9594
137	26.9181	42.9169	61.855	32.3711	58.132	35.712
1						