

Coronavirus Disease 2019 (COVID-19)

CDC COVID Data Tracker

Maps, charts, and data provided by the CDC

Case Trends County View Laboratory Community Impact Unique Populations COVID-19 Home

Cases and Deaths by State US and State Trends Compare State Trends Demographics Trends by Population Factors Forecasting Trends in ED Visits

Compare Trends in COVID-19 Cases and Deaths in the US

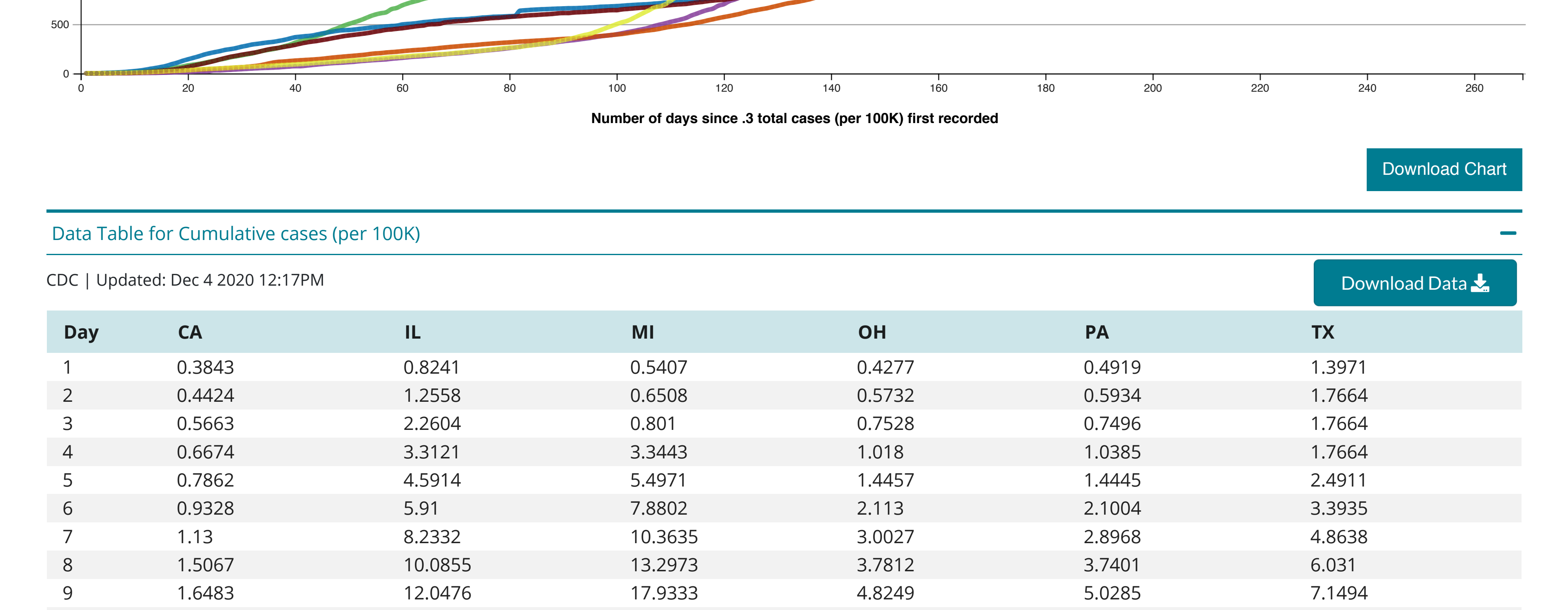
Reported to the CDC by State or Territory

View: Cases/Deaths Measure: Daily/Cumulative Metric: Raw Totals/Rate per 100,000 Scale: Linear/Logarithmic

Select up to 6 states or territories: California, Illinois, Michigan, Ohio, Pennsylvania, Texas

Cumulative cases of Covid-19, reported to CDC, in CA, IL, MI, OH, PA, and TX

Cumulative cases (per 100K), by number of days since .3 total cases (per 100K) first recorded.



Data Table for Cumulative cases (per 100K)

CDC | Updated: Dec 4 2020 12:17PM

Table with columns: Day, CA, IL, MI, OH, PA, TX. Contains daily cumulative case data for each state from day 1 to 269.

Data Sources, References & Notes: Total cases are based on aggregate counts of COVID-19 cases sent by state and territorial jurisdictions to the Centers for Disease Control and Prevention (CDC) since January 21, 2020.

Rates are calculated using U.S. Census Bureau, 2018 American Community Survey 1-year estimates and are shown as cases/100,000 people. The chart shows total cases per state, new cases in the last 7 days per state, and the rate (cases/100,000) per state.

Case numbers reported on other websites may differ from what is posted on CDC's website because CDC's overall case numbers are validated through a confirmation process with each jurisdiction.