



2009 H1N1 Flu

Content on this page was developed during the 2009-2010 H1N1 pandemic and *has not been updated.*

- **The H1N1 virus that caused that pandemic is now a regular human flu virus and continues to circulate seasonally worldwide.**
- **The English language content on this website is being archived for *historic and reference purposes only.***
- **For current, updated information on seasonal flu, including information about H1N1, see the [CDC Seasonal Flu website](#).**

2009 H1N1 Flu Situation Update

September 4, 2009, 11:00 AM ET

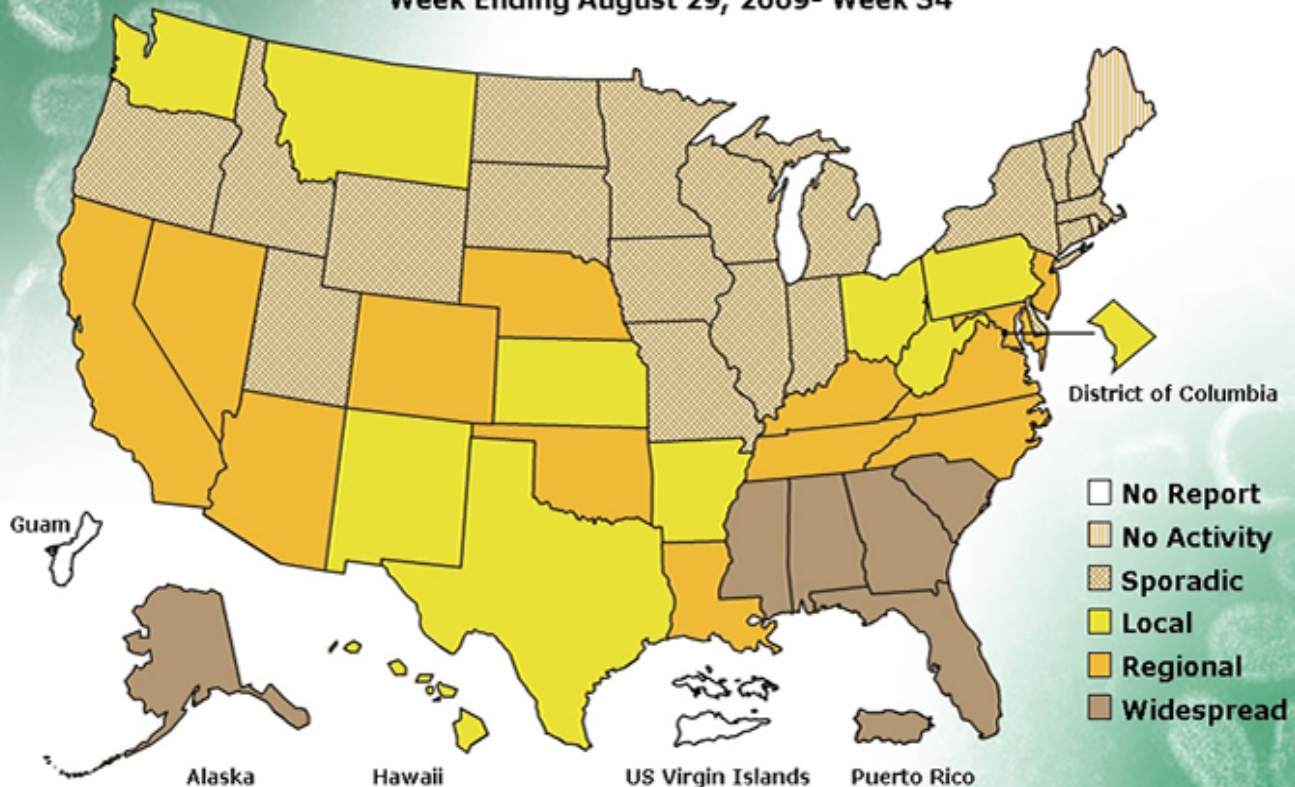
Map: Weekly Influenza Activity Estimates Reported by State
and Territorial Epidemiologists
(Activity levels indicate geographic spread of both seasonal
and 2009 influenza A [H1N1] viruses)
(Posted September 4, 2009, 2:00 PM ET, for Week Ending
August 29, 2009)

FLUVIEW



A Weekly Influenza Surveillance Report Prepared by the Influenza Division
Weekly Influenza Activity Estimates Reported by State and Territorial Epidemiologists*

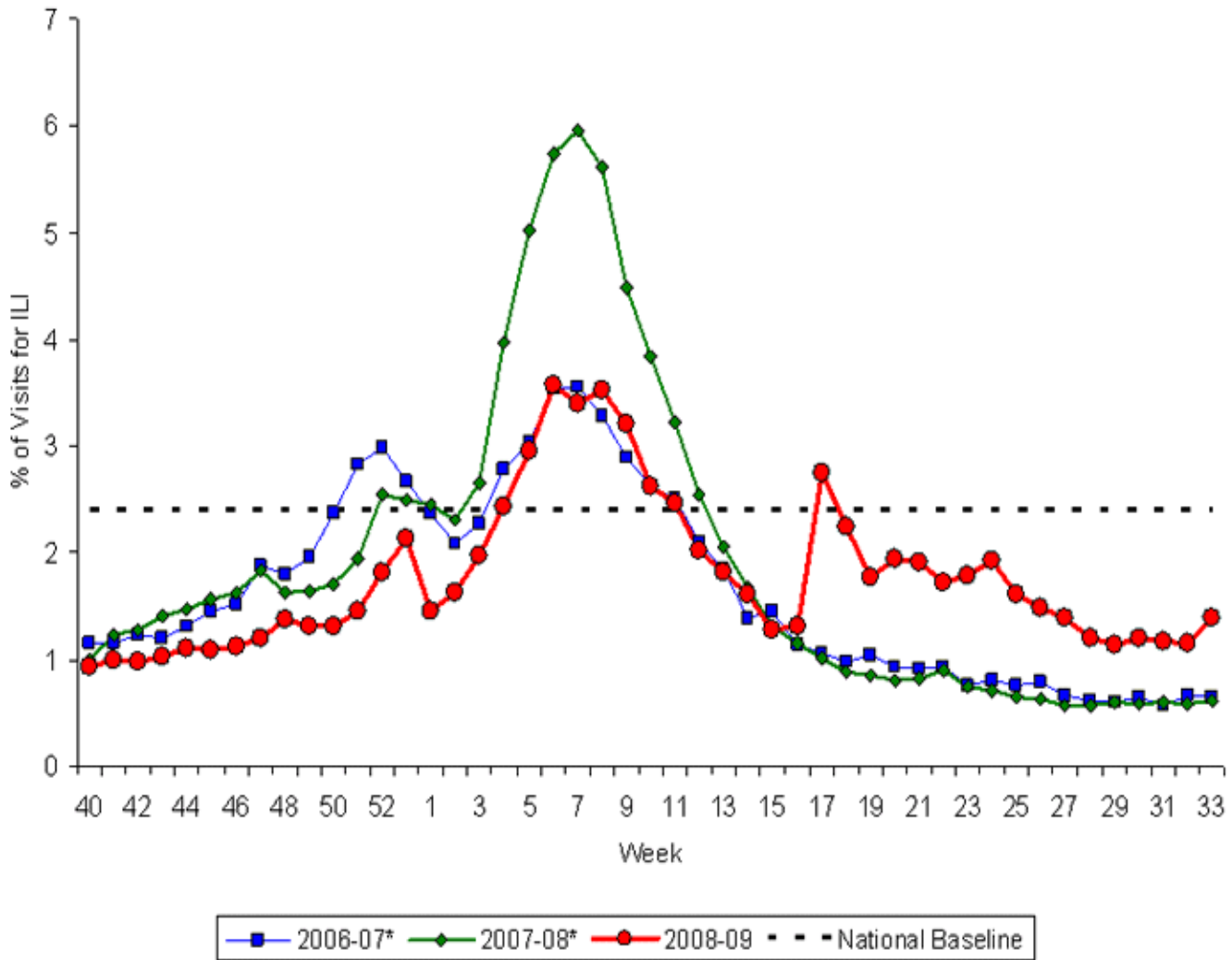
Week Ending August 29, 2009- Week 34



*This map indicates geographic spread and does not measure the severity of influenza activity.

For more details about the data in the map above, see the [FluView Surveillance Report](#) for the week ending August 29, 2009. For information about how this map is updated, see [Questions & Answers About CDC's Online Reporting](#).

Percentage of Visits for Influenza-like Illness (ILI) Reported by the U.S. Outpatient Influenza-like Illness Surveillance Network (ILINet), National Summary 2008-2009 and Previous Two Seasons
(Posted August 28, 2009, 6:00 PM ET, for Week Ending August 22, 2009)



*There was no week 53 during the 2006-07 and 2007-08 seasons, therefore the week 53 data point for those seasons is an average of weeks 52 and 1.

[View Chart Data](#)

Total U.S. 2009 H1N1 Flu Hospitalizations and Deaths, April - August 2009

Posted September 4, 2009, 11:00 AM ET

Data reported to CDC by September 3, 2009, 9:00 AM ET

Reporting States and Territories*

53

Hospitalized Cases

9,079

Deaths

593

*Includes the District of Columbia, American Samoa, Guam, Puerto Rico and the U.S. Virgin Islands.

The number of hospitalized 2009 H1N1 cases and deaths presented in this table are an aggregate of reports received by CDC from U.S. states and territories and will be updated weekly each Friday at 11am. For state level information, refer to [state health departments](#).

CDC discontinued reporting of individual confirmed and probable cases of 2009 H1N1 infection on July 24, 2009. CDC will report the total number of hospitalizations and deaths weekly, and

continue

to use its traditional surveillance systems to track the progress of the 2009 H1N1 flu outbreak.

For more information about CDC's 2009 H1N1 influenza surveillance system, see

[Questions & Answers About CDC's 2009 H1N1 Influenza Surveillance](#).

International Human Cases of 2009 H1N1 Flu Infection

See: [World Health Organization](#)  .

Page last reviewed September 4, 2009, 11:00 AM ET

Page last updated September 4, 2009, 11:00 AM ET

Content source: [Centers for Disease Control and Prevention](#)

Centers for Disease Control and Prevention 1600 Clifton Road Atlanta, GA 30329-4027,
USA

800-CDC-INFO (800-232-4636) TTY: (888) 232-6348 - [Contact CDC-INFO](#)

