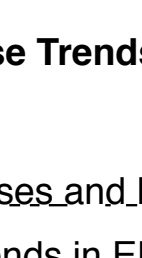




Coronavirus Disease 2019 (COVID-19)

CDC COVID Data Tracker

Maps, charts, and data provided by the CDC



In observance of Thanksgiving, the COVID Data Tracker will not update on Thursday, November 26.

Updates will resume on Friday, November 27.

Case Trends County View Laboratory Community Impact Unique Populations

Cases and Deaths by State US and State Trends Compare State Trends Demographics Trends by Population Factors Forecasting Trends in ED Visits

Compare Trends in COVID-19 Cases and Deaths in the US

Reported to the CDC by State or Territory

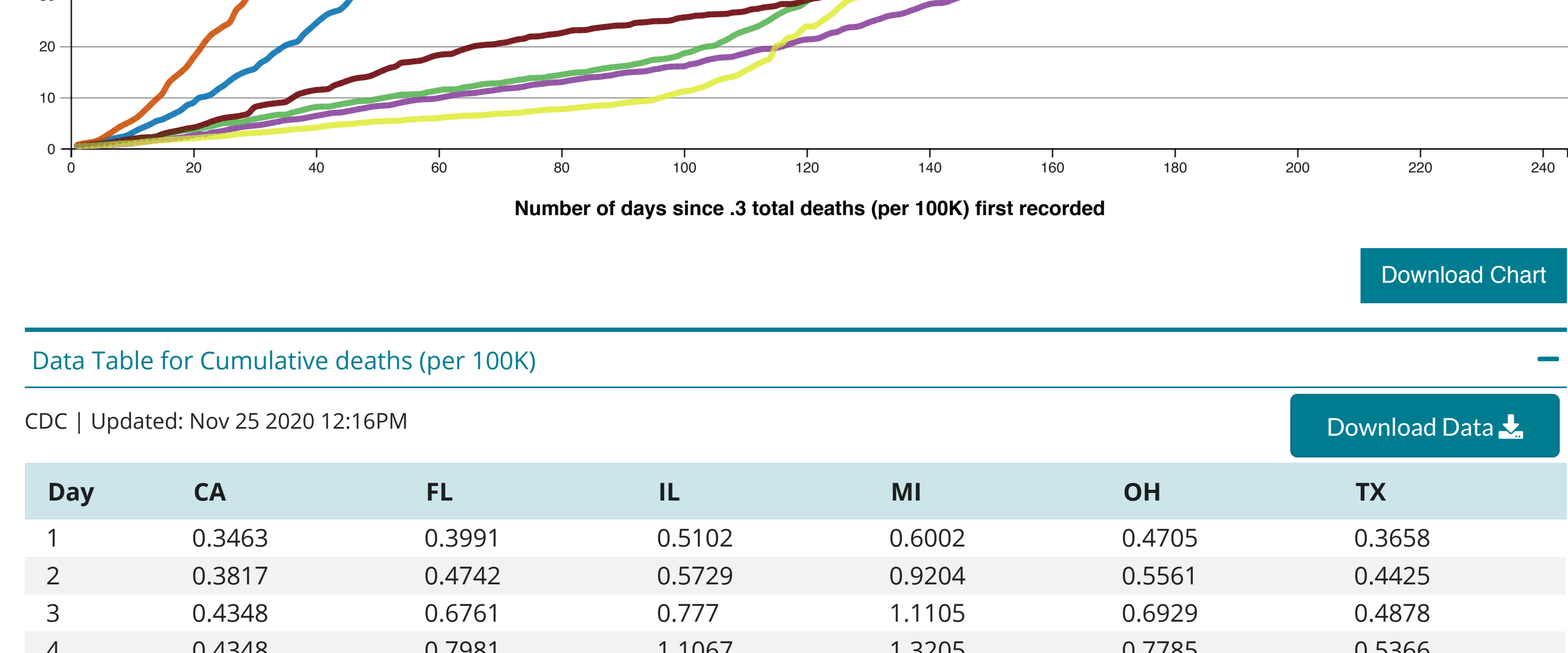
View: Cases Deaths Measure: Daily Cumulative Metric: Raw Totals Rate per 100,000 Scale: Linear Logarithmic

Select up to 6 states or territories: California Florida Illinois Michigan Ohio Texas

Show full US Data (available only in logarithmic scale)

Cumulative deaths attributed to Covid-19, reported to CDC, in CA, FL, IL, MI, OH, and TX

Cumulative deaths (per 100K), by number of days since .3 total deaths (per 100K) first recorded.



Download Chart

Data Table for Cumulative deaths (per 100K)

CDC | Updated: Nov 25 2020 12:16PM

Download Data

Table with columns: Day, CA, FL, IL, MI, OH, TX. Contains 244 rows of cumulative death data per 100K.

View and Download COVID-19 Case Surveillance Public Use Data

Data Sources, References & Notes: Total cases are based on aggregate counts of COVID-19 cases sent by state and territorial jurisdictions to the Centers for Disease Control and Prevention (CDC) since January 21, 2020...

Rates are calculated using U.S. Census Bureau, 2018 American Community Survey 1-year estimates and are shown as cases/100,000 people. The chart shows total cases per state, new cases in the last 7 days per state, and the rate (cases/100,000) per state.

Case numbers reported on other websites may differ from what is posted on CDC's website because CDC's overall case numbers are validated through a confirmation process with each jurisdiction.