



# Coronavirus Disease 2019 (COVID-19)

## CDC COVID Data Tracker

Maps, charts, and data provided by the CDC



In observance of Thanksgiving, the COVID Data Tracker will not update on Thursday, November 26.

Updates will resume on Friday, November 27.

Case Trends

County View

Laboratory

Community Impact

Unique Populations



Cases and Deaths by State | U.S. and State Trends | Compare State Trends | Demographics | Trends by Population Factors | Forecasting | Trends in ED Visits

## Compare Trends in COVID-19 Cases and Deaths in the US

Reported to the CDC by State or Territory

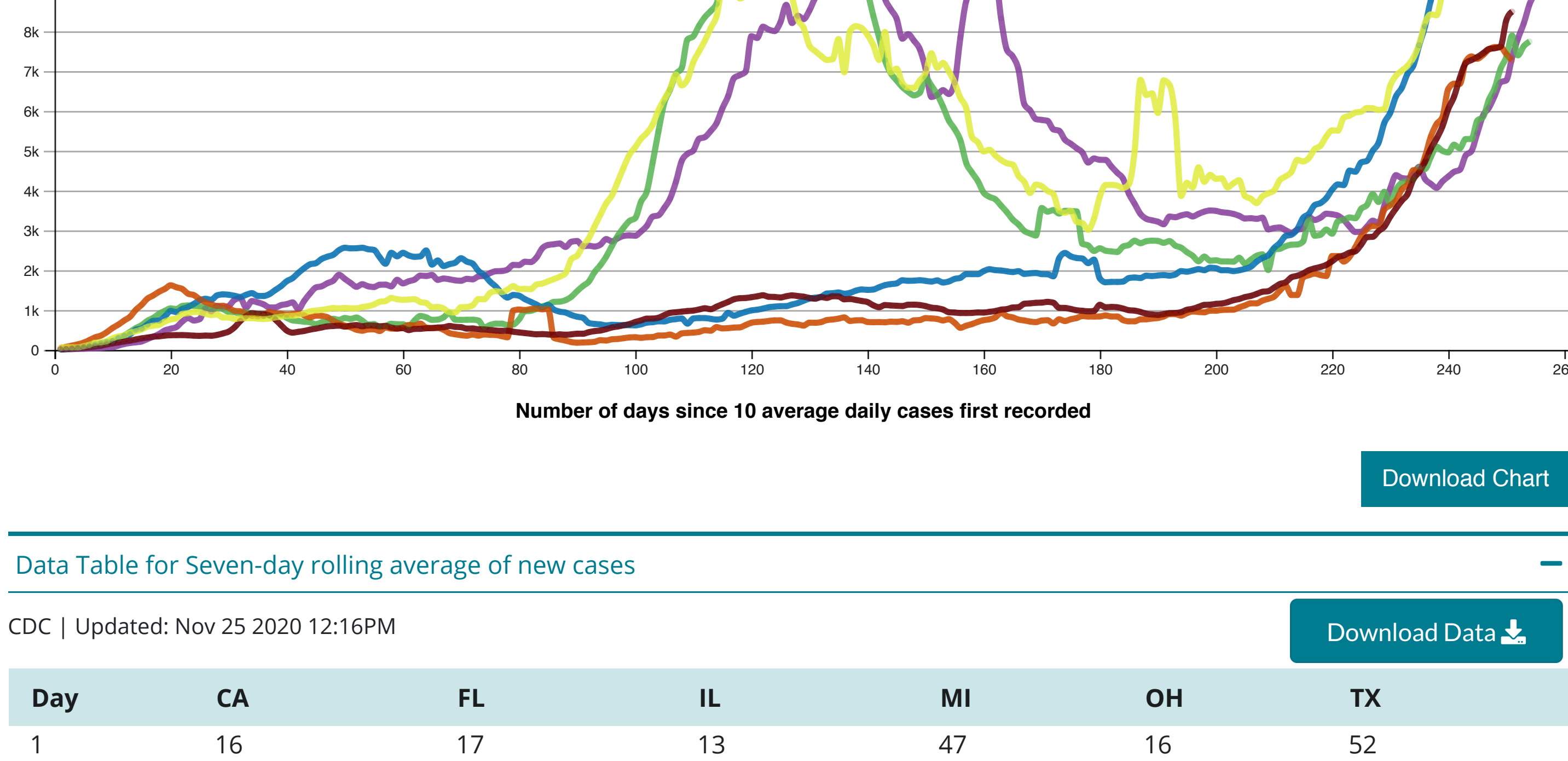
View: Cases/Deaths, Measure: Daily/Cumulative, Metric: Raw Totals/Rate per 100,000, Scale: Linear/Logarithmic

Select up to 6 states or territories: California, Florida, Illinois, Michigan, Ohio, Texas

Show full US Data (available only in logarithmic scale)

### New cases of Covid-19, reported to CDC, in CA, FL, IL, MI, OH, and TX

Seven-day rolling average of new cases, by number of days since 10 average daily cases first recorded.



Download Chart

Data Table for Seven-day rolling average of new cases

CDC | Updated: Nov 25 2020 12:16PM

Download Data

Table with 7 columns: Day, CA, FL, IL, MI, OH, TX. Contains 261 rows of data.

View and Download COVID-19 Case Surveillance Public Use Data

Data Sources, References & Notes: Total cases are based on aggregate counts of COVID-19 cases sent by state and territorial jurisdictions to the Centers for Disease Control and Prevention (CDC) since January 21, 2020...

Rates are calculated using U.S. Census Bureau, 2018 American Community Survey 1-year estimates and are shown as cases/100,000 people. The chart shows total cases per state, new cases in the last 7 days per state, and the rate (cases/100,000) per state.

Case numbers reported on other websites may differ from what is posted on CDC's website because CDC's overall case numbers are validated through a confirmation process with each jurisdiction.

HAVE QUESTIONS?

Visit CDC-INFO

Call 800-232-4636

Email CDC-INFO

Open 24/7

CDC INFORMATION

About CDC

Jobs

Funding

Policies

File Viewers & Players

Privacy

FOIA

No Fear Act

OIG

Nondiscrimination

Accessibility

CONNECT WITH CDC

Facebook, Twitter, LinkedIn, YouTube, RSS, Email