



## 2009 H1N1 Flu

**Content on this page was developed during the 2009-2010 H1N1 pandemic and *has not been updated.***

- **The H1N1 virus that caused that pandemic is now a regular human flu virus and continues to circulate seasonally worldwide.**
- **The English language content on this website is being archived for *historic and reference purposes only.***
- **For current, updated information on seasonal flu, including information about H1N1, see the [CDC Seasonal Flu website](#).**

---

### 2009 H1N1 Flu Situation Update

September 11, 2009, 7:00 PM ET

---

#### Map: Weekly Influenza Activity Estimates Reported by State and Territorial Epidemiologists

(Activity levels indicate geographic spread of both seasonal  
and 2009 influenza A [H1N1] viruses)

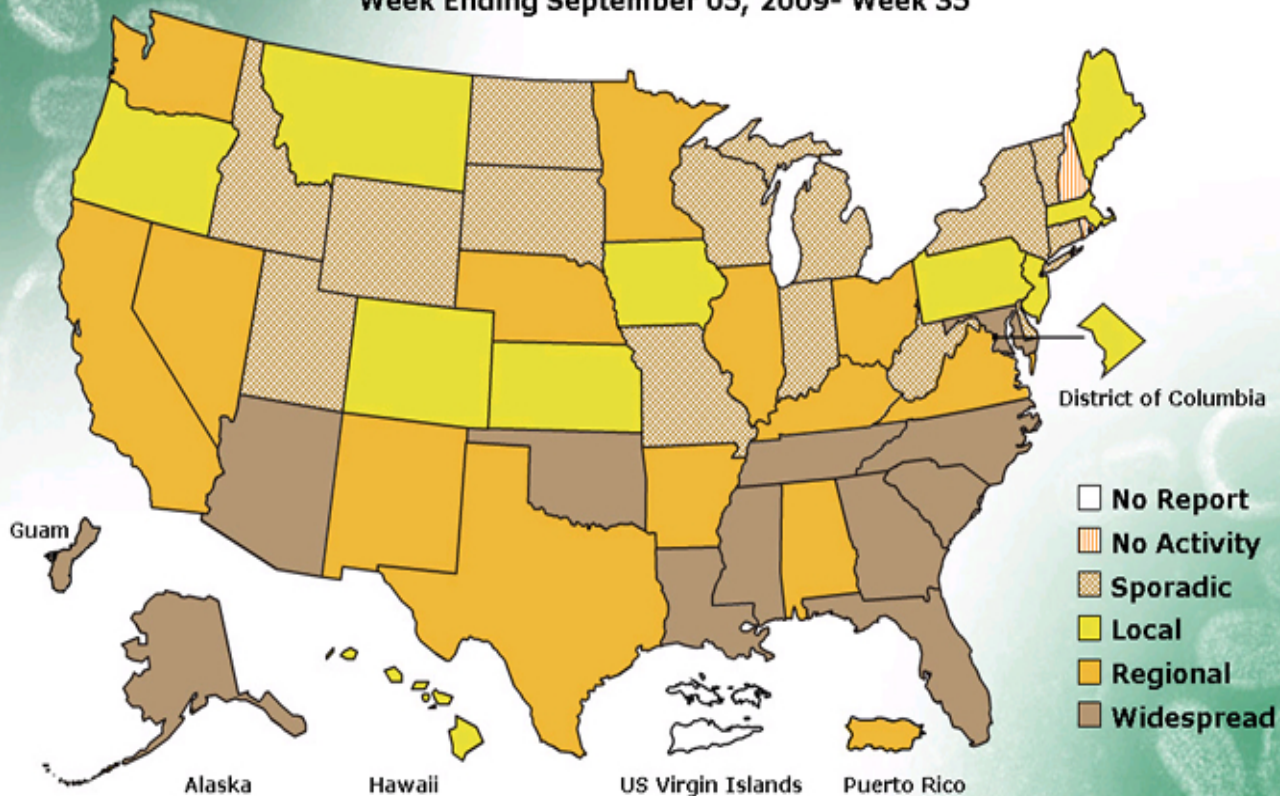
(Posted September 11, 2009, 7:00 PM ET, for Week Ending  
September 5, 2009)

# FLUVIEW



**A Weekly Influenza Surveillance Report Prepared by the Influenza Division**  
**Weekly Influenza Activity Estimates Reported by State and Territorial Epidemiologists\***

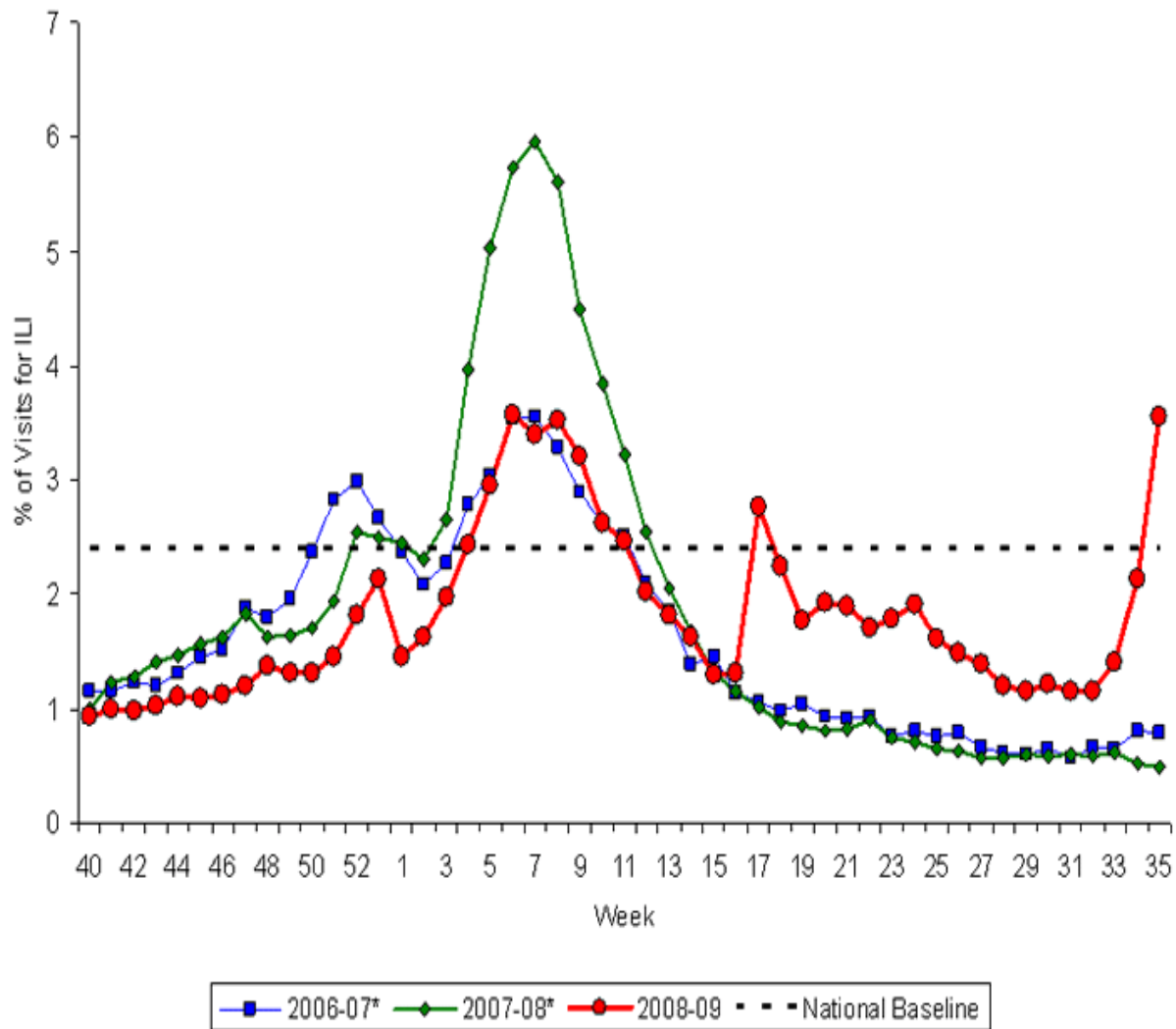
**Week Ending September 05, 2009- Week 35**



\*This map indicates geographic spread and does not measure the severity of influenza activity.

For more details about the data in the map above, see the [FluView Surveillance Report](#) for the week ending September 5, 2009. For information about how this map is updated, see [Questions & Answers About CDC's Online Reporting](#).

**Percentage of Visits for Influenza-like Illness (ILI) Reported  
by the U.S. Outpatient Influenza-like Illness Surveillance  
Network (ILINet), National Summary 2008-2009 and  
Previous Two Seasons  
(Posted September 11, 2009, 7:00 PM ET, for Week Ending  
September 5, 2009)**



\*There was no week 53 during the 2006-07 and 2007-08 seasons, therefore the week 53 data point for those seasons is an average of weeks 52 and 1.

[View Chart Data](#)

### U.S. Influenza and Pneumonia-Associated Hospitalizations and Deaths from August 30 – September 5, 2009

Posted September 11, 2009, 6:00 PM ET

Data reported to CDC by September 10, 2009, 12:00 AM ET

Cases Defined by	Hospitalizations	Deaths
<b>Influenza and Pneumonia Syndrome*</b>	<b>1,097</b>	<b>168</b>
<b>Influenza Laboratory-Tests**</b>	<b>263</b>	<b>28</b>

\*Reports can be based on syndromic, admission or discharge data, or a combination of data elements that could include laboratory-confirmed and influenza-like illness hospitalizations.

\*\*Laboratory confirmation includes any positive influenza test (rapid influenza tests, RT-PCR, DFA, IFA, or culture), whether or not typing was done.


This table is based on data from a new influenza and pneumonia hospitalizations and deaths web-

based reporting system that will be used to monitor trends in activity. This is the first week of data from this new system and reflects reports by 42 of 56 states and territories. The table shows aggregate reports of all influenza and pneumonia-associated hospitalizations and deaths (including 2009 H1N1 and seasonal flu) since August 30, 2009 received by CDC from U.S. states and territories. This table will be updated weekly each Friday at 11am. For the 2009-2010 influenza season, states are reporting based on [new case definitions for hospitalizations and deaths](#) effective August 30, 2009.

CDC will continue to use its traditional surveillance systems to track the progress of the 2009-2010 influenza season. For more information about influenza surveillance, including reporting of influenza-associated hospitalizations and deaths, see [Questions and Answers: Monitoring Influenza Activity, Including 2009 H1N1](#).

The number of 2009 H1N1 hospitalizations and deaths reported to CDC from April – August 2009 is available on the [Past Situation Updates](#) page.

For state level information, refer to [state health departments](#).

International Human Cases of 2009 H1N1 Flu Infection  
See: [World Health Organization](#) .

---

Page last reviewed September 11, 2009, 7:00 PM ET  
Page last updated September 11, 2009, 7:00 PM ET  
Content source: [Centers for Disease Control and Prevention](#)

---

Centers for Disease Control and Prevention 1600 Clifton Road Atlanta, GA 30329-4027,  
USA  
800-CDC-INFO (800-232-4636) TTY: (888) 232-6348 - [Contact CDC-INFO](#)

