

Coronavirus Disease 2019 (COVID-19)

CDC COVID Data Tracker

Maps, charts, and data provided by the CDC

Case Trends - County View Laboratory Community Impact Unique Populations COVID-19 Home

Cases and Deaths by State US and State Trends Compare State Trends Demographics Trends by Population Factors Forecasting Trends in ED Visits

Compare Trends in COVID-19 Cases and Deaths in the US

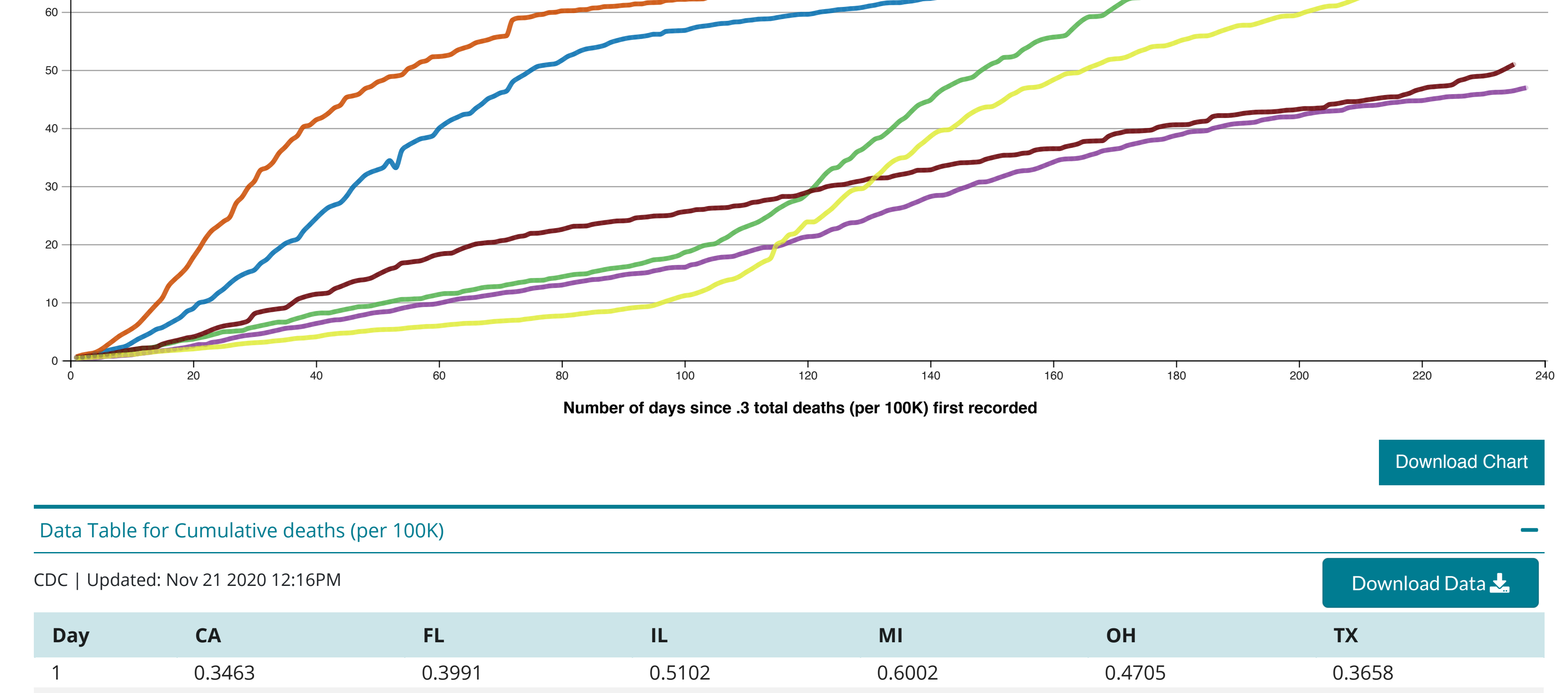
Reported to the CDC by State or Territory

View: Deaths/Cases Measure: Daily/Cumulative Metric: Raw Totals/Rate per 100,000 Scale: Linear/Logarithmic

Select up to 6 states or territories: California, Florida, Illinois, Michigan, Ohio, Texas

Cumulative deaths attributed to Covid-19, reported to CDC, in CA, FL, IL, MI, OH, and TX

Cumulative deaths (per 100K), by number of days since .3 total deaths (per 100K) first recorded.



Data Table for Cumulative deaths (per 100K)

CDC | Updated: Nov 21 2020 12:16PM

Download Data

Table with 7 columns: Day, CA, FL, IL, MI, OH, TX. Contains daily cumulative death data for each state.

View and Download COVID-19 Case Surveillance Public Use Data

Data Sources, References & Notes: Total cases are based on aggregate counts of COVID-19 cases sent by state and territorial jurisdictions to the Centers for Disease Control and Prevention (CDC) since January 21, 2020...

Rates are calculated using U.S. Census Bureau, 2018 American Community Survey 1-year estimates and are shown as cases/100,000 people. The chart shows total cases per state, new cases in the last 7 days per state, and the rate (cases/100,000) per state.

Case numbers reported on other websites may differ from what is posted on CDC's website because CDC's overall case numbers are validated through a confirmation process with each jurisdiction. Differences between reporting jurisdictions and CDC's website may occur due to the timing of reporting and website updates.

*Counts for New York City and New York state are shown separately; data for New York State show total cases and deaths for the State excluding data for NYC.

HAVE QUESTIONS? Visit CDC-INFO Call 800-232-4636 Email CDC-INFO Open 24/7

CDC INFORMATION About CDC Jobs Funding Policies File Viewers & Players

CONNECT WITH CDC Social media icons: Facebook, Twitter, YouTube, Instagram, LinkedIn, Snapchat

Privacy FOIA No Fear Act OIG Nondiscrimination Accessibility