

CDC COVID Data Tracker Maps, charts, and data provided by the CDC

Case Trends County View Laboratory Community Impact Unique Populations COVID-19 Home

Cases and Deaths by State US and State Trends Compare State Trends Demographics Trends by Population Factors Forecasting Trends in ED Visits

Compare Trends in COVID-19 Cases and Deaths in the US

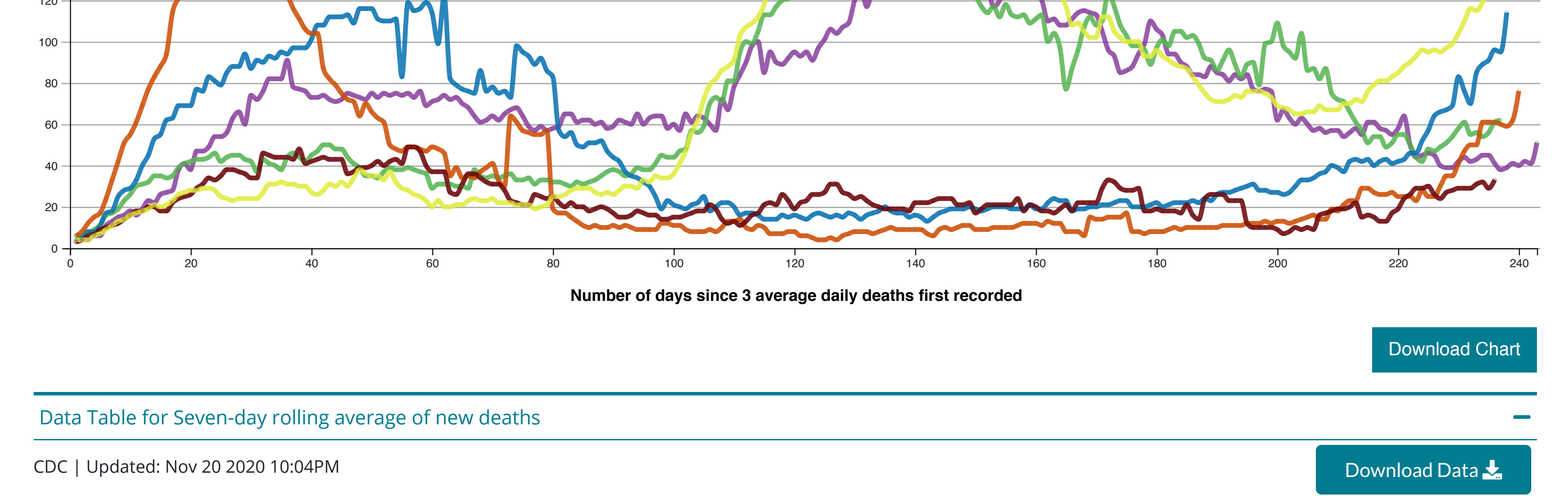
Reported to the CDC by State or Territory

View: Cases, Deaths Measure: Daily, Cumulative Metric: Raw Totals, Rate per 100,000 Scale: Linear, Logarithmic

Select up to 6 states or territories: California, Florida, Illinois, Michigan, Ohio, Texas

New deaths attributed to Covid-19, reported to CDC, in CA, FL, IL, MI, OH, and TX

Seven-day rolling average of new deaths, by number of days since 3 average daily deaths first recorded.



Data Table for Seven-day rolling average of new deaths

CDC | Updated: Nov 20 2020 10:04PM

Table with 8 columns: Day, CA, FL, IL, MI, OH, TX. Contains daily data for 243 days.

Data Sources, References & Notes: Total cases are based on aggregate counts of COVID-19 cases sent by state and territorial jurisdictions to the Centers for Disease Control and Prevention (CDC) since January 21, 2020...

Rates are calculated using U.S. Census Bureau, 2018 American Community Survey 1-year estimates and are shown as cases/100,000 people.

Case numbers reported on other websites may differ from what is posted on CDC's website because CDC's updates the case numbers for validating through a jurisdiction process with each jurisdiction.