

Coronavirus Disease 2019 (COVID-19)

CDC COVID Data Tracker

Maps, charts, and data provided by the CDC

Case Trends ▾

Laboratory ▾

Community Impact ▾

Unique Populations ▾

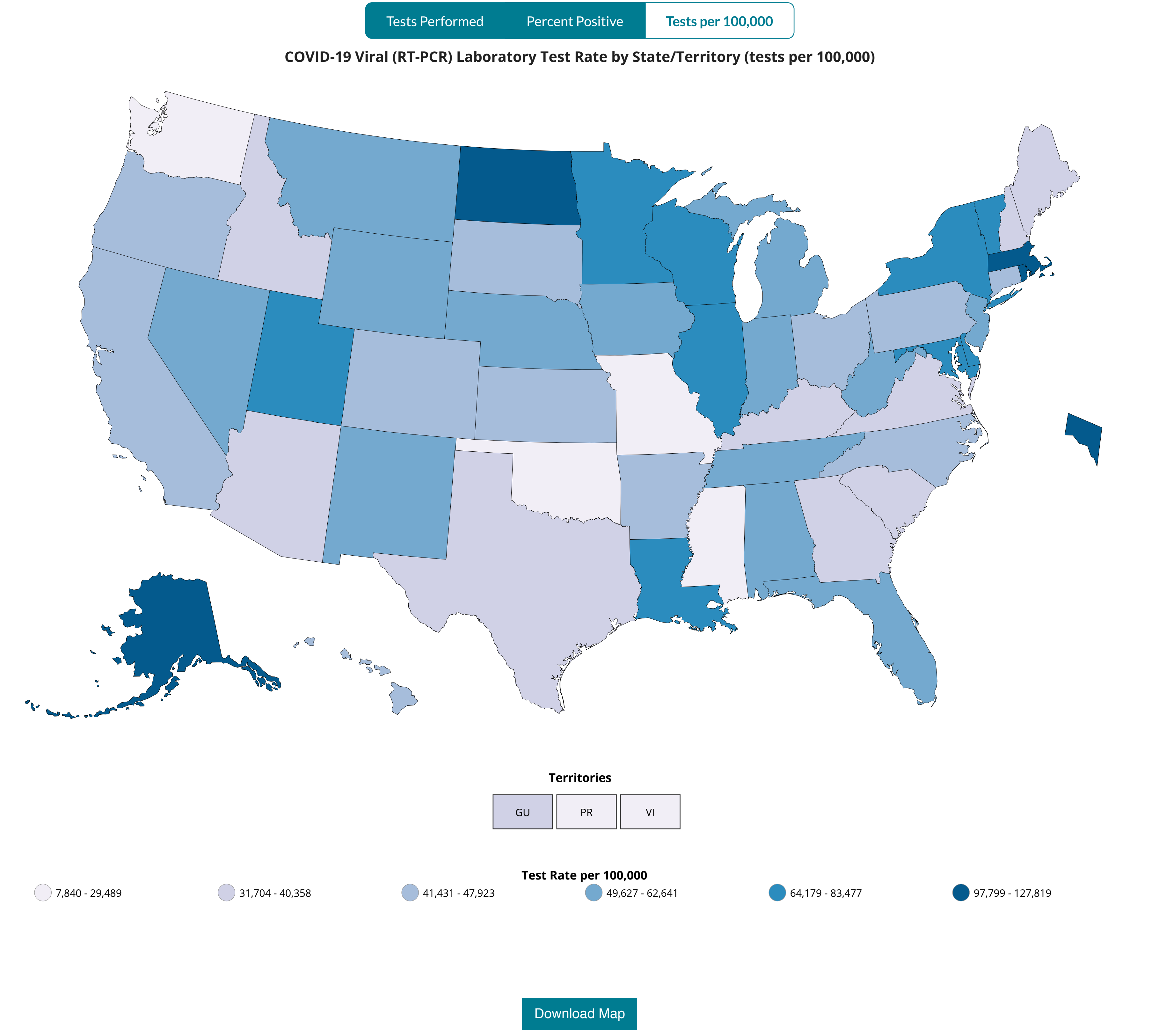
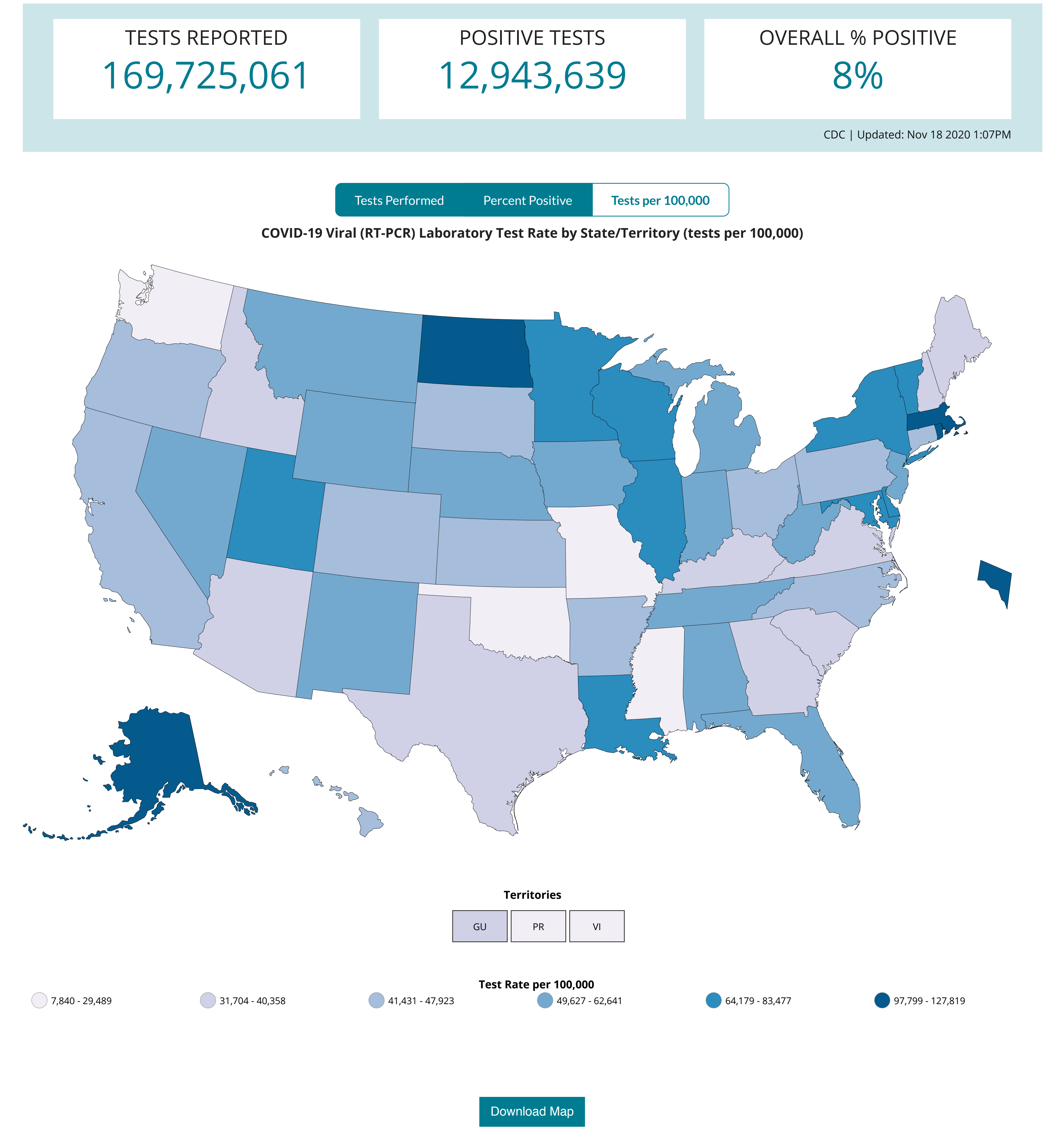
COVID-19 Home

PCR Testing

National Commercial Lab Survey

10-Site Commercial Lab Survey

United States Laboratory Testing



Data table for COVID-19 Viral (RT-PCR) Test Rate by State/Territory

CDC | Updated: Nov 18 2020 1:07PM

Download Data

State ↕	Tests per 100K ↕	% Positive ↕
Alaska	127,819	0-5%
Rhode Island	114,163	0-5%
North Dakota	106,923	6-10%
Massachusetts	104,888	0-5%
District of Columbia	97,799	0-5%
New York	83,477	0-5%
Vermont	79,594	0-5%
Wisconsin	77,575	6-10%
Delaware	76,579	0-5%
Minnesota	75,848	6-10%
Maryland	68,614	6-10%
Louisiana	64,531	6-10%
Utah	64,257	11-20%
Illinois	64,179	6-10%
Wyoming	62,641	6-10%
Michigan	60,457	6-10%
Florida	60,308	6-10%
Iowa	59,101	11-20%
Indiana	58,116	6-10%
West Virginia	57,218	0-5%
Tennessee	55,463	6-10%
New Jersey	54,618	0-5%
Nebraska	54,281	11-20%
Montana	51,680	11-20%
New Mexico	50,612	6-10%
Nevada	50,456	11-20%
Alabama	49,627	11-20%
Arkansas	47,923	6-10%
Oregon	46,163	0-5%
California	45,452	6-10%
Ohio	45,418	6-10%
North Carolina	42,928	6-10%
Kansas	42,344	6-10%
Colorado	42,075	6-10%
Connecticut	41,938	6-10%
South Dakota	41,711	11-20%
Hawaii	41,480	0-5%
Pennsylvania	41,431	6-10%
Kentucky	40,358	6-10%
New Hampshire	40,267	0-5%
Idaho	40,171	11-20%
Maine	38,863	0-5%
Arizona	38,478	6-10%
South Carolina	37,012	11-20%
Virginia	36,797	6-10%
Texas	36,175	11-20%
Georgia	36,136	6-10%
Guam	31,704	11-20%
Washington	29,489	0-5%
Missouri	26,853	6-10%
Mississippi	25,712	11-20%
Virgin Islands	24,136	0-5%
Oklahoma	22,046	6-10%
Puerto Rico	7,840	0-5%

[View and Download](#) COVID-19 Case Surveillance Public Use Data

Disclaimer: The data presented above represent viral COVID-19 laboratory test (reverse transcription polymerase chain reaction) results from laboratories in the United States, including commercial and reference laboratories, public health laboratories, hospital laboratories, and other testing locations. The data represent laboratory test totals—not individual people—and exclude antibody and antigen tests. The data are provisional and subject to change. The data presented may not include counts for the most recent 3 days due to the time it takes to report testing information. The data may also not include results from all testing sites within a jurisdiction (e.g., point-of-care test sites) and therefore reflect the majority, but not all, COVID-19 tests in the United States. The data do not include COVID-19 antigen or antibody testing results.

The data are reported to state and jurisdictional health departments in accordance with applicable state or local law and in accordance with the Coronavirus Aid, Relief, and Economic Security (CARES) Act (CARES Act Section 18115). The data for each state are sourced from either data submitted directly by the state health department via COVID-19 electronic laboratory reporting (CELR), or a combination of commercial, public health, and in-house hospital laboratories. CELR data are used for states that either submit line-level data or submit aggregate counts that do not include antigen or antibody tests. The data are available for public use on [HealthData.Gov](#).