

Coronavirus Disease 2019 (COVID-19)

CDC COVID Data Tracker

Maps, charts, and data provided by the CDC

Case Trends ▾

Laboratory ▾

Community Impact ▾

Unique Populations ▾

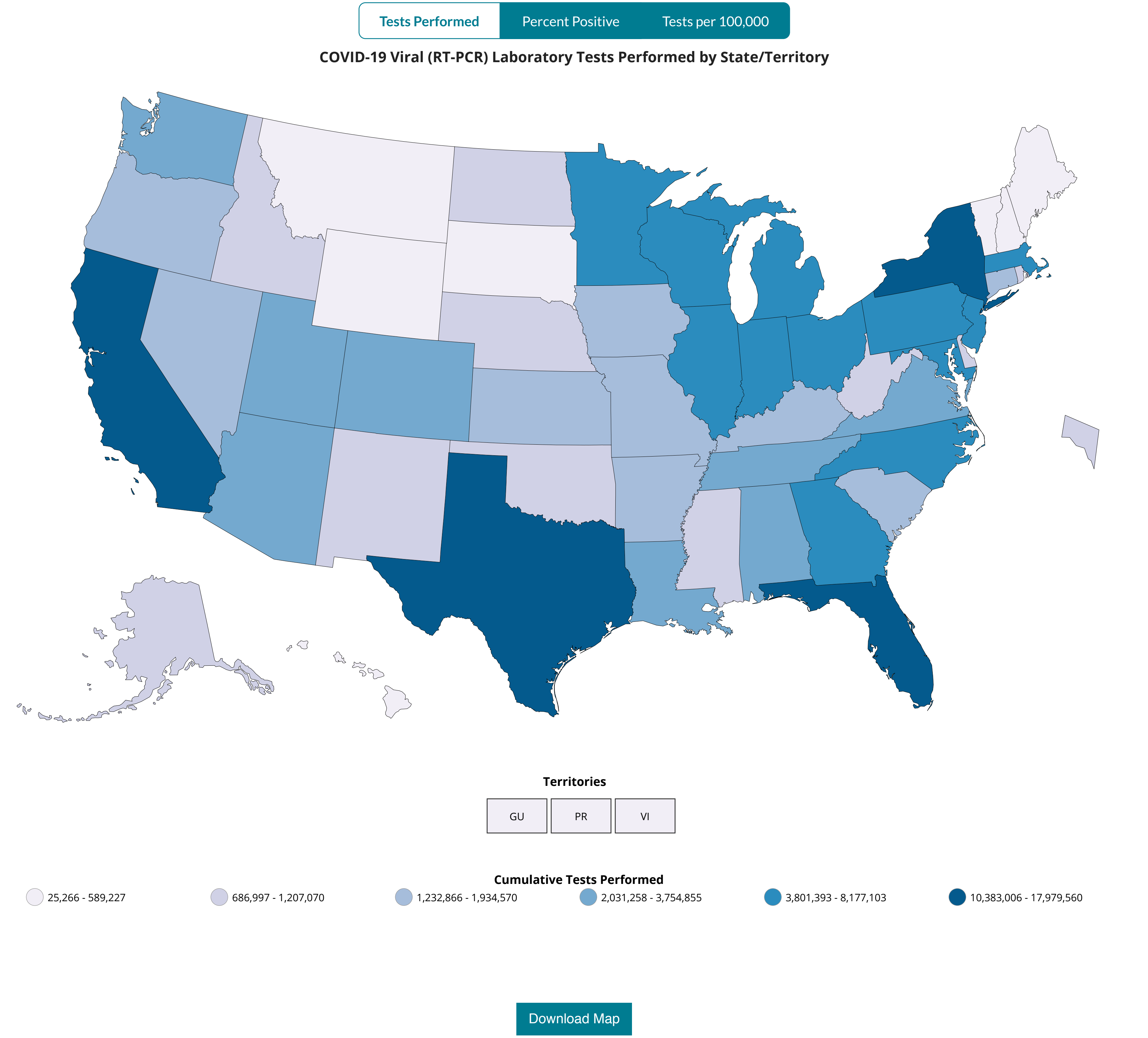
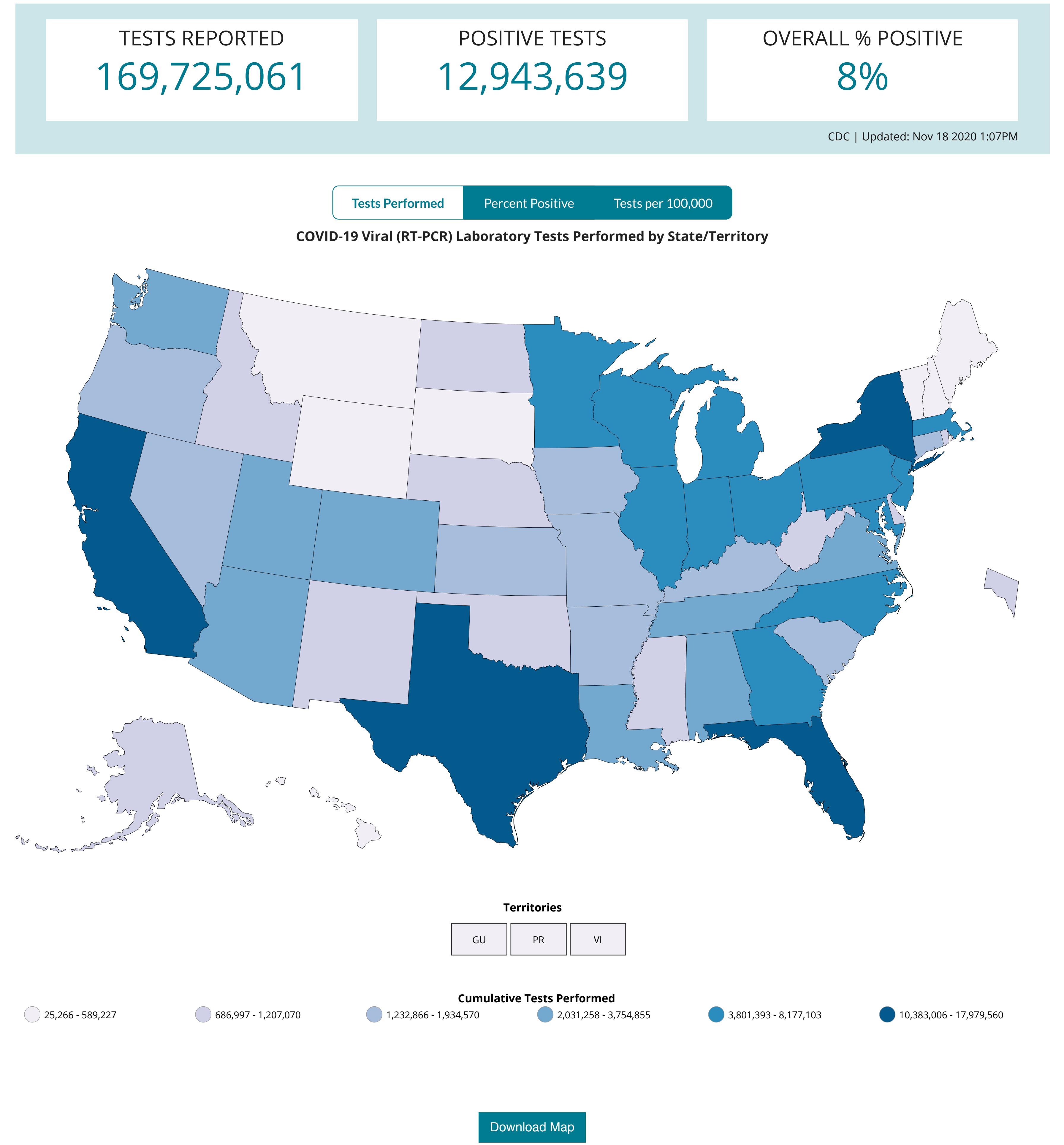
COVID-19 Home

PCR Testing

National Commercial Lab Survey

10-Site Commercial Lab Survey

United States Laboratory Testing



Data table for COVID-19 Viral (RT-PCR) Tests Performed by State/Territory

CDC | Updated: Nov 18 2020 1:07PM

Download Data

State ↕	# Tests Performed ↕	% Positive ↕
California	17,979,560	6-10%
New York	16,313,405	0-5%
Florida	12,845,402	6-10%
Texas	10,383,006	11-20%
Illinois	8,177,103	6-10%
Massachusetts	7,239,551	0-5%
Michigan	6,043,288	6-10%
Ohio	5,309,134	6-10%
Pennsylvania	5,306,220	6-10%
New Jersey	4,865,725	0-5%
Wisconsin	4,509,919	6-10%
North Carolina	4,457,579	6-10%
Minnesota	4,256,002	6-10%
Maryland	4,146,181	6-10%
Indiana	3,889,080	6-10%
Georgia	3,801,393	6-10%
Tennessee	3,754,855	6-10%
Virginia	3,134,260	6-10%
Louisiana	3,007,133	6-10%
Arizona	2,759,518	6-10%
Alabama	2,425,737	11-20%
Colorado	2,396,454	6-10%
Washington	2,222,214	0-5%
Utah	2,031,258	11-20%
Oregon	1,934,570	0-5%
South Carolina	1,881,751	11-20%
Iowa	1,865,335	11-20%
Kentucky	1,803,377	6-10%
Missouri	1,645,176	6-10%
Nevada	1,531,035	11-20%
Connecticut	1,498,326	6-10%
Arkansas	1,444,329	6-10%
Kansas	1,232,866	6-10%
Rhode Island	1,207,070	0-5%
New Mexico	1,060,558	6-10%
Nebraska	1,047,241	11-20%
West Virginia	1,033,270	0-5%
Alaska	942,592	0-5%
Oklahoma	869,313	6-10%
North Dakota	812,699	6-10%
Mississippi	767,910	11-20%
Delaware	740,650	0-5%
Idaho	704,695	11-20%
District of Columbia	686,997	0-5%
Hawaii	589,227	0-5%
Montana	549,003	11-20%
New Hampshire	546,212	0-5%
Maine	520,144	0-5%
Vermont	498,500	0-5%
South Dakota	367,995	11-20%
Wyoming	361,904	6-10%
Puerto Rico	250,517	0-5%
Guam	52,556	11-20%
Virgin Islands	25,266	0-5%

[View and Download](#) COVID-19 Case Surveillance Public Use Data

Disclaimer: The data presented above represent viral COVID-19 laboratory test (reverse transcription polymerase chain reaction) results from laboratories in the United States, including commercial and reference laboratories, public health laboratories, hospital laboratories, and other testing locations. The data represent laboratory test totals—not individual people—and exclude antibody and antigen tests. The data are provisional and subject to change. The data presented may not include counts for the most recent 3 days due to the time it takes to report testing information. The data may also not include results from all testing sites within a jurisdiction (e.g., point-of-care test sites) and therefore reflect the majority, but not all, COVID-19 tests in the United States. The data do not include COVID-19 antigen or antibody testing results.

The data are reported to state and jurisdictional health departments in accordance with applicable state or local law and in accordance with the Coronavirus Aid, Relief, and Economic Security (CARES) Act (CARES Act Section 18115). The data for each state are sourced from either data submitted directly by the state health department via COVID-19 electronic laboratory reporting (CELR), or a combination of commercial, public health, and in-house hospital laboratories. CELR data are used for states that either submit line-level data or submit aggregate counts that do not include antigen or antibody tests. The data are available for public use on [HealthData.Gov](#).