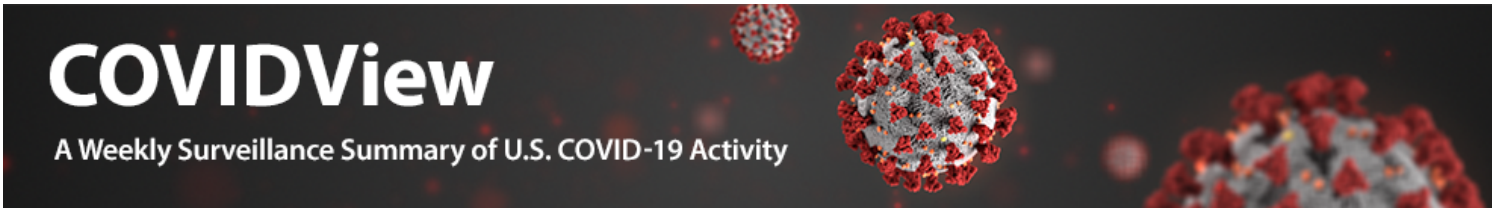


Coronavirus Disease 2019 (COVID-19)

[MENU >](#)

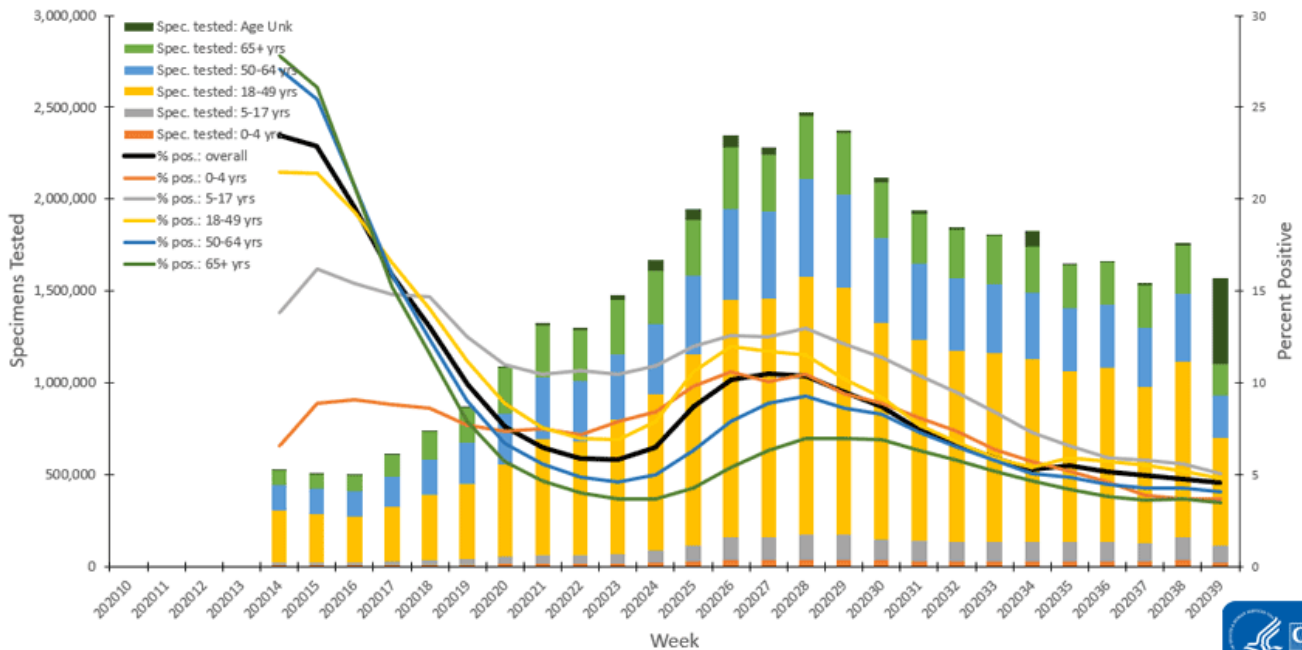


Commercial Labs

Updated Oct. 2, 2020

[Print](#)

Select Commercial Laboratories Reporting to CDC:
 Number of Specimens Tested and Percent Positive for SARS-CoV-2
 March 29, 2020 – September 26, 2020



[View Larger](#)

U.S. Commercial Laboratories Repo
 March 29, 2020 – September 2
 Data as of October 1, 202

No.	Total (includes age unknown)	0-4 years	5-17 years
-----	------------------------------	-----------	------------

Week	of Labs	Spec Tested	# Pos	% Pos	Spec Tested	# Pos	% Pos	Spec Tested	# Pos	% Pos	Spe Test
202014	5	526,985	124,011	23.5	8,002	525	6.6	13,931	1,924	13.8	283,2
202015	5	505,554	115,789	22.9	6,742	599	8.9	13,755	2,233	16.2	264,6
202016	5	500,723	98,294	19.6	6,577	600	9.1	16,220	2,495	15.4	251,9
202017	6	612,831	97,308	15.9	7,650	673	8.8	20,809	3,083	14.8	298,6
202018	6	736,392	95,845	13	9,712	835	8.6	25,840	3,786	14.7	355,1
202019	6	870,404	86,238	9.9	12,131	937	7.7	32,094	4,003	12.5	406,3
202020	6	1,092,025	83,439	7.6	15,509	1,155	7.4	41,099	4,532	11	498,2
202021	6	1,325,732	86,645	6.5	17,380	1,312	7.5	47,694	4,999	10.5	626,8
202022	6	1,299,030	76,832	5.9	15,700	1,126	7.2	44,857	4,820	10.7	618,9
202023	6	1,477,903	86,193	5.8	18,008	1,415	7.9	52,949	5,571	10.5	729,6
202024	6	1,666,775	108,709	6.5	21,640	1,808	8.4	65,195	7,103	10.9	851,6
202025	6	1,947,258	169,807	8.7	27,853	2,740	9.8	89,127	10,700	12	1,041,
202026	6	2,350,578	240,590	10.2	35,312	3,741	10.6	123,942	15,645	12.6	1,293,
202027	5	2,280,765	238,637	10.5	34,385	3,471	10.1	126,372	15,734	12.5	1,297,
202028	6	2,476,309	257,875	10.4	38,629	4,051	10.5	138,259	18,026	13	1,402,
202029	6	2,373,871	224,652	9.5	38,081	3,580	9.4	134,841	16,372	12.1	1,342,
202030	6	2,114,923	184,812	8.7	34,344	3,051	8.9	116,218	13,238	11.4	1,179,
202031	6	1,941,035	145,812	7.5	31,768	2,562	8.1	107,273	11,181	10.4	1,098,
202032	6	1,845,431	124,175	6.7	30,567	2,263	7.4	101,838	9,684	9.5	1,046,
202033	6	1,807,782	106,443	5.9	30,754	1,979	6.4	101,486	8,512	8.4	1,029,
202034	6	1,825,536	97,183	5.3	30,684	1,737	5.7	103,177	7,487	7.3	996,5
202035	6	1,651,062	90,491	5.5	30,269	1,572	5.2	106,630	7,080	6.6	927,5
202036	6	1,662,642	86,082	5.2	30,183	1,376	4.6	106,654	6,312	5.9	944,2

202037	6	1,541,886	76,334	5	27,819	1,072	3.9	99,139	5,791	5.8	848,4
202038	6	1,759,194	83,661	4.8	33,719	1,240	3.7	129,367	7,270	5.6	955,8
202039	6	1,567,855	71,651	4.6	23,474	863	3.7	89,310	4,587	5.1	587,7
Total		39,760,481	3,257,508	8.2	616,892	46,283	7.5	2,048,076	202,168	9.9	21,177

[Download Raw Data](#)  [36 KB]

Last Updated Oct. 2, 2020

Content source: [National Center for Immunization and Respiratory Diseases \(NCIRD\), Division of Viral Diseases](#)