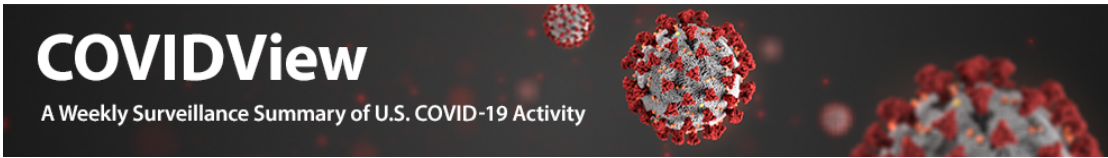


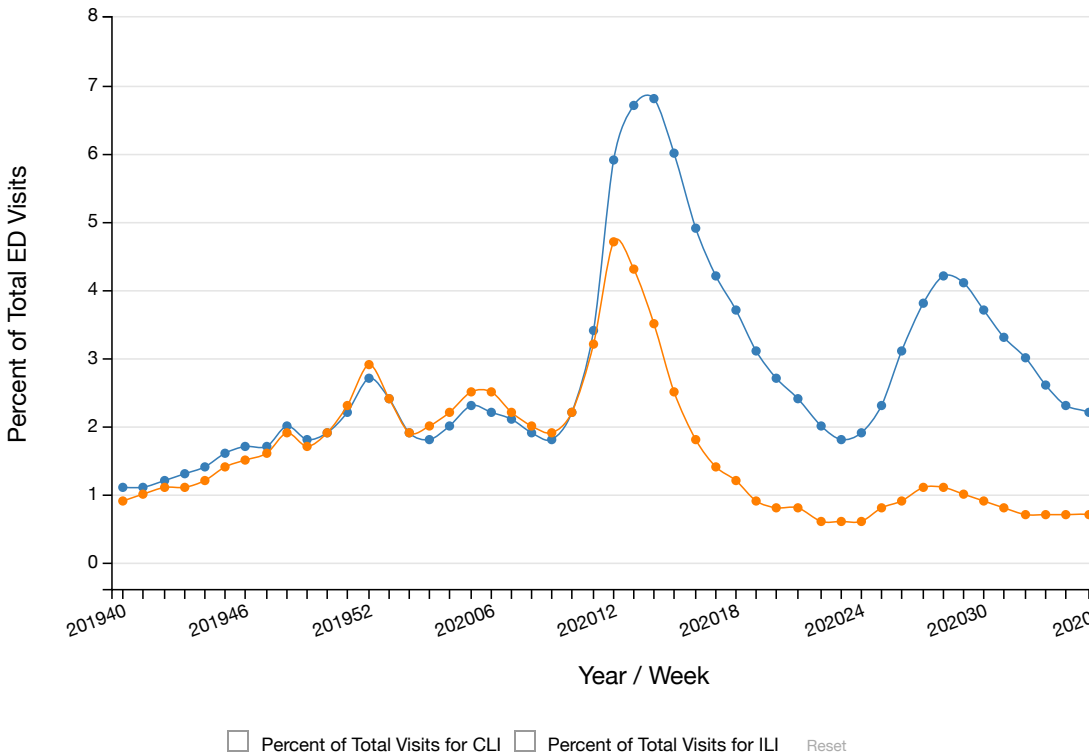
# Coronavirus Disease 2019 (COVID-19)



## Emergency Department Visits Percentage of Visits for COVID-19-Like Illness (CLI) or Influenza-like Illness (ILI)

Updated Oct. 2, 2020 [Print](#)

### NSSP: Percentage of Visits for Influenza-Like Illness (ILI) and COVID-19-Like Illness (CLI) to Emergency Departments Weekly National Summary, September 29, 2019 – September 26, 2020



Weekly National Summary, September 29, 2019 – September 26, 2020

Source: [View Data Table](#)

NSSP: Percentage of Visits for Influenza-Like Illness (ILI) and COVID-19-Like Illness +  
(CLI) to Emergency Departments

National Syndromic Surveillance Program (NSSP): Emergency  
Department Visits  
Percentage of Visits for COVID-19-Like Illness (CLI) or  
Influenza-like Illness (ILI)  
September 29, 2019 – September 26, 2020  
Data as of October 1, 2020

<b>National</b>						
<b>Week</b>	<b>Number of Facilities Reporting</b>	<b>Total Number of ED Visits</b>	<b>CLI Visits</b>		<b>ILI Visits</b>	
			<b>Number</b>	<b>Percent of Total Visits</b>	<b>Number</b>	<b>Percent of Total Visits</b>
201940	3,384	2,153,942	22,661	1.1	19,711	0.9
201941	3,379	2,107,033	23,502	1.1	20,508	1
201942	3,382	2,097,436	25,778	1.2	22,534	1.1
201943	3,378	2,120,092	26,901	1.3	23,833	1.1
201944	3,398	2,077,069	28,656	1.4	25,475	1.2
201945	3,438	2,138,465	33,228	1.6	30,017	1.4
201946	3,442	2,134,609	35,756	1.7	32,677	1.5
201947	3,465	2,222,966	38,792	1.7	36,311	1.6
201948	3,464	2,111,262	42,565	2	40,009	1.9
201949	3,472	2,239,243	41,272	1.8	37,951	1.7
201950	3,475	2,253,266	43,536	1.9	42,762	1.9
201951	3,476	2,237,106	49,178	2.2	51,215	2.3

201952	3,474	2,345,916	63,893	2.7	69,064	2.9
202001	3,516	2,430,859	58,592	2.4	58,282	2.4
202002	3,521	2,319,478	43,271	1.9	43,254	1.9
202003	3,514	2,289,719	42,277	1.8	45,318	2
202004	3,541	2,287,256	46,004	2	50,347	2.2
202005	3,550	2,381,767	53,960	2.3	60,553	2.5
202006	3,560	2,371,032	53,198	2.2	59,928	2.5
202007	3,575	2,306,570	47,380	2.1	51,670	2.2
202008	3,574	2,292,236	43,981	1.9	46,727	2
202009	3,583	2,254,314	40,760	1.8	42,519	1.9
202010	3,593	2,285,330	49,407	2.2	50,717	2.2
202011	3,601	2,271,460	76,513	3.4	72,590	3.2
202012	3,595	1,824,896	107,079	5.9	85,777	4.7
202013	3,615	1,467,379	98,924	6.7	63,302	4.3
202014	3,614	1,277,736	86,608	6.8	44,467	3.5
202015	3,607	1,214,507	72,518	6	30,625	2.5
202016	3,608	1,193,059	58,879	4.9	21,746	1.8
202017	3,596	1,263,626	53,145	4.2	17,818	1.4
202018	3,605	1,320,197	48,938	3.7	15,228	1.2
202019	3,600	1,382,617	42,823	3.1	12,843	0.9
202020	3,603	1,432,665	39,175	2.7	12,017	0.8
202021	3,625	1,534,814	36,352	2.4	11,530	0.8
202022	3,649	1,628,089	32,740	2	10,216	0.6
202023	3,650	1,677,335	30,464	1.8	9,986	0.6

202024	3,654	1,752,555	32,692	1.9	10,729	0.6
202025	3,659	1,797,254	41,894	2.3	13,665	0.8
202026	3,670	1,891,589	58,088	3.1	17,695	0.9
202027	3,673	1,897,008	72,857	3.8	20,002	1.1
202028	3,668	1,992,318	83,146	4.2	21,512	1.1
202029	3,671	1,950,413	79,813	4.1	20,051	1
202030	3,669	1,912,096	70,838	3.7	16,945	0.9
202031	3,669	1,900,537	63,538	3.3	15,638	0.8
202032	3,683	1,884,240	56,645	3	14,078	0.7
202033	3,682	1,916,625	49,786	2.6	13,362	0.7
202034	3,688	1,902,304	44,352	2.3	12,966	0.7
202035	3,691	1,905,882	41,082	2.2	12,724	0.7
202036	3,685	1,898,439	38,128	2	12,330	0.6
202037	3,683	1,911,428	37,247	1.9	12,972	0.7
202038	3,699	1,906,889	36,768	1.9	12,769	0.7
202039	3,699	1,906,831	36,553	1.9	13,065	0.7
<b>Total</b>		101,271,754	2,582,133		1,610,030	

[Download Raw Data](#)  [29 KB]

Last Updated Oct. 2, 2020

Content source: [National Center for Immunization and Respiratory Diseases \(NCIRD\), Division of Viral Diseases](#)