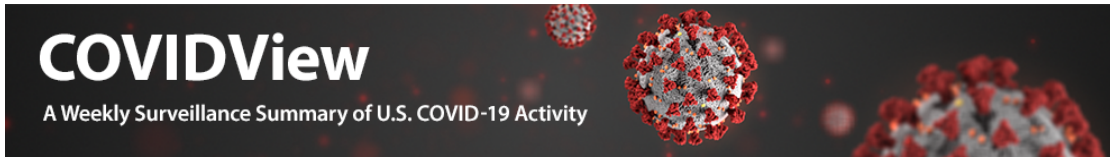
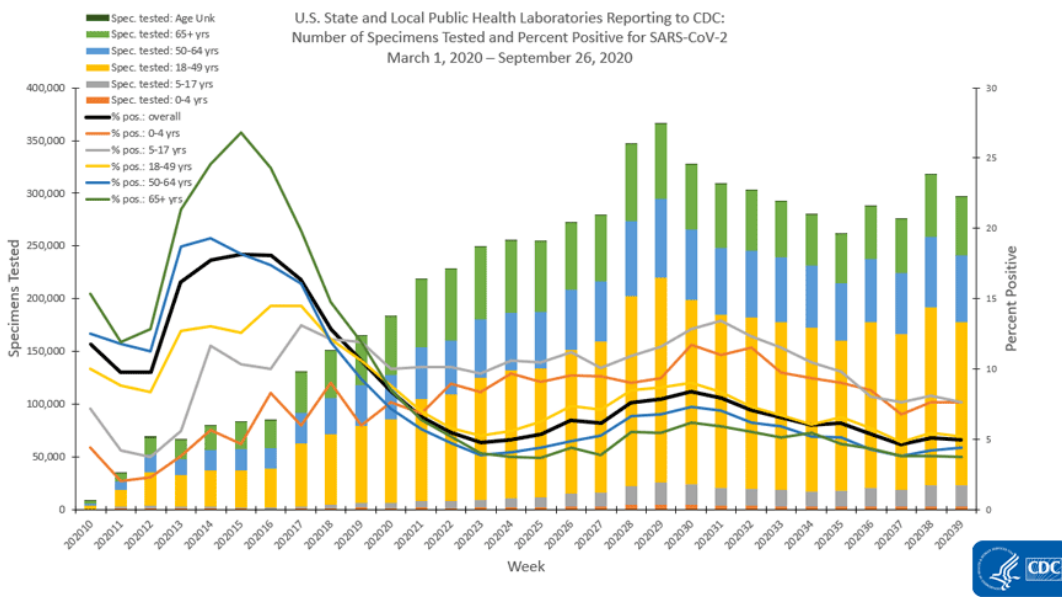


Coronavirus Disease 2019 (COVID-19)



U.S. State and Local Public Health Laboratories Reporting to CDC

Updated Oct. 2, 2020 [Print](#)



[View Larger](#)

U.S. State and Local Public Health Laboratories Reporting to CDC
 March 1, 2020 – September 26, 2020
 Data as of October 2, 2020

Week	No. of Labs	Spec Tested	Total		0-4 years		5-17	
			# Pos	% Pos	Spec Tested	# Pos	% Pos	Spec Tested
202010	1	1	0	0	0	0	0	0
202011	1	1	0	0	0	0	0	0
202012	1	1	0	0	0	0	0	0
202013	1	1	0	0	0	0	0	0
202014	1	1	0	0	0	0	0	0
202015	1	1	0	0	0	0	0	0
202016	1	1	0	0	0	0	0	0
202017	1	1	0	0	0	0	0	0
202018	1	1	0	0	0	0	0	0
202019	1	1	0	0	0	0	0	0
202020	1	1	0	0	0	0	0	0
202021	1	1	0	0	0	0	0	0
202022	1	1	0	0	0	0	0	0
202023	1	1	0	0	0	0	0	0
202024	1	1	0	0	0	0	0	0
202025	1	1	0	0	0	0	0	0
202026	1	1	0	0	0	0	0	0
202027	1	1	0	0	0	0	0	0
202028	1	1	0	0	0	0	0	0
202029	1	1	0	0	0	0	0	0

202010	80	8,299	973	11.7	228	10	4.4	586
202011	86	35,699	3,484	9.8	976	20	2.0	1,968
202012	87	69,733	6,828	9.8	1,574	36	2.3	2,328
202013	89	66,556	10,757	16.2	1,266	48	3.8	1,436
202014	89	79,603	14,108	17.7	1,129	64	5.7	1,460
202015	88	83,213	15,090	18.1	914	43	4.7	1,639
202016	87	84,680	15,299	18.1	795	66	8.3	1,484
202017	86	130,729	21,363	16.3	914	55	6.0	2,546
202018	87	151,194	19,405	12.8	1,195	108	9.0	3,953
202019	87	165,676	17,665	10.7	1,732	104	6.0	4,412
202020	89	183,692	15,391	8.4	1,415	108	7.6	5,156
202021	88	218,825	14,474	6.6	1,828	125	6.8	6,247
202022	88	228,057	12,591	5.5	1,639	147	9.0	6,308
202023	88	249,798	11,868	4.8	1,954	163	8.3	7,129
202024	89	255,478	12,698	5.0	2,228	215	9.6	8,502
202025	88	255,239	13,765	5.4	2,352	214	9.1	9,867
202026	89	271,966	17,309	6.4	2,878	274	9.5	12,032
202027	90	279,157	17,206	6.2	3,155	299	9.5	12,944
202028	90	346,696	26,455	7.6	4,431	400	9.0	17,643
202029	90	366,014	28,699	7.8	4,855	454	9.4	21,432
202030	90	327,547	27,581	8.4	4,370	513	11.7	19,443
202031	90	309,159	24,467	7.9	3,736	410	11.0	17,106
202032	89	303,203	21,438	7.1	3,534	407	11.5	15,976
202033	88	292,632	19,170	6.6	3,349	326	9.7	15,595
202034	90	280,061	16,937	6.0	3,019	283	9.4	14,248

202035	88	261,388	16,092	6.2	3,002	270	9.0	15,234
202036	88	287,661	15,525	5.4	3,138	266	8.5	17,258
202037	88	275,637	12,718	4.6	2,760	187	6.8	16,169
202038	88	317,515	16,173	5.1	3,410	260	7.6	19,767
202039	85	296,373	14,670	4.9	3,368	257	7.6	20,101
Total		6,481,480	480,199	7.4	71,144	6,132	8.6	299,969

[Download Raw Data](#)  [18 KB]

Last Updated Oct. 2, 2020

Content source: [National Center for Immunization and Respiratory Diseases \(NCIRD\), Division of Viral Diseases](#)