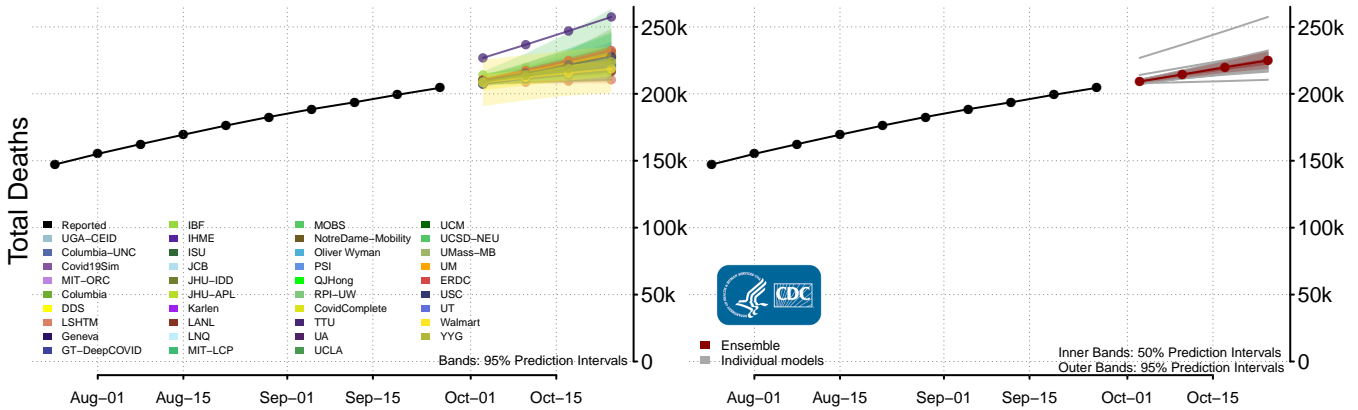
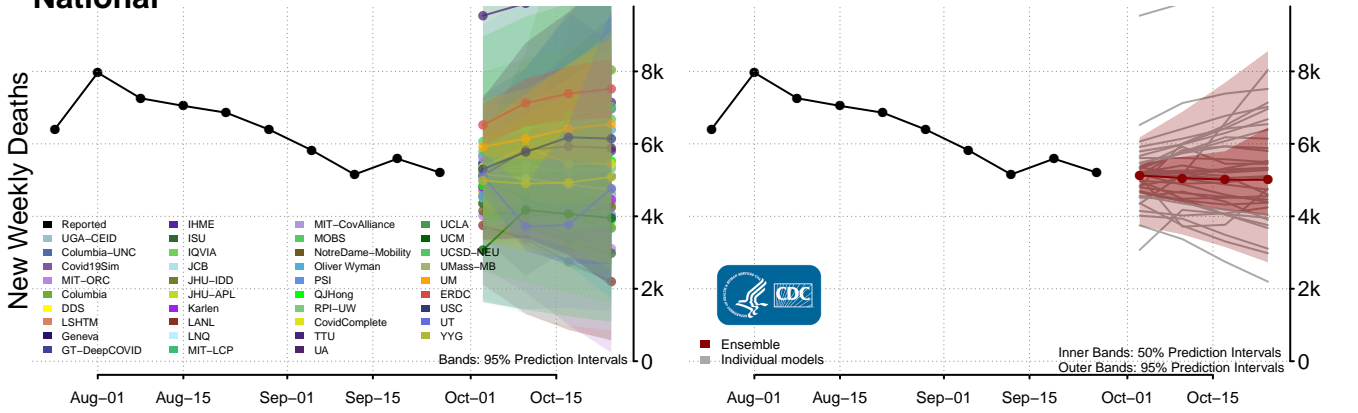
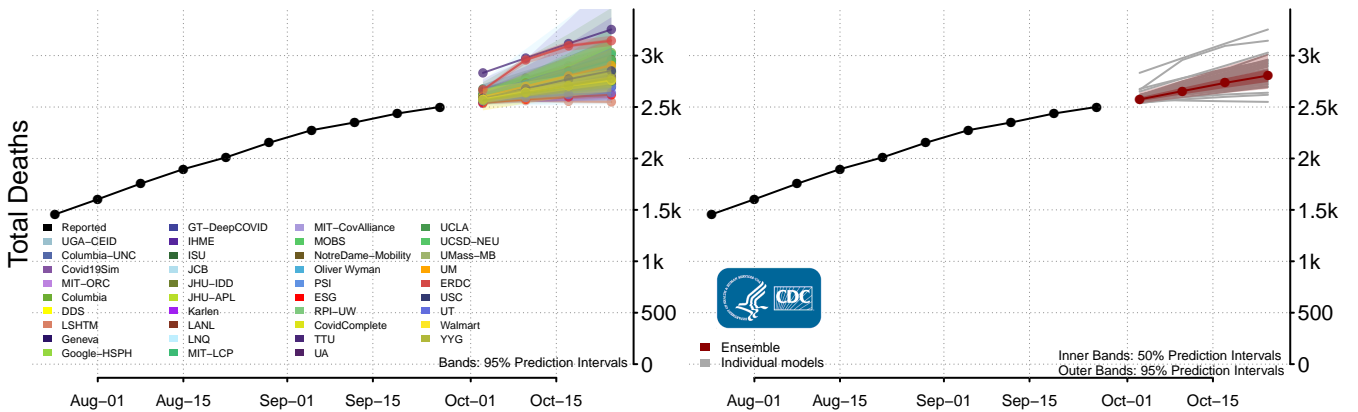
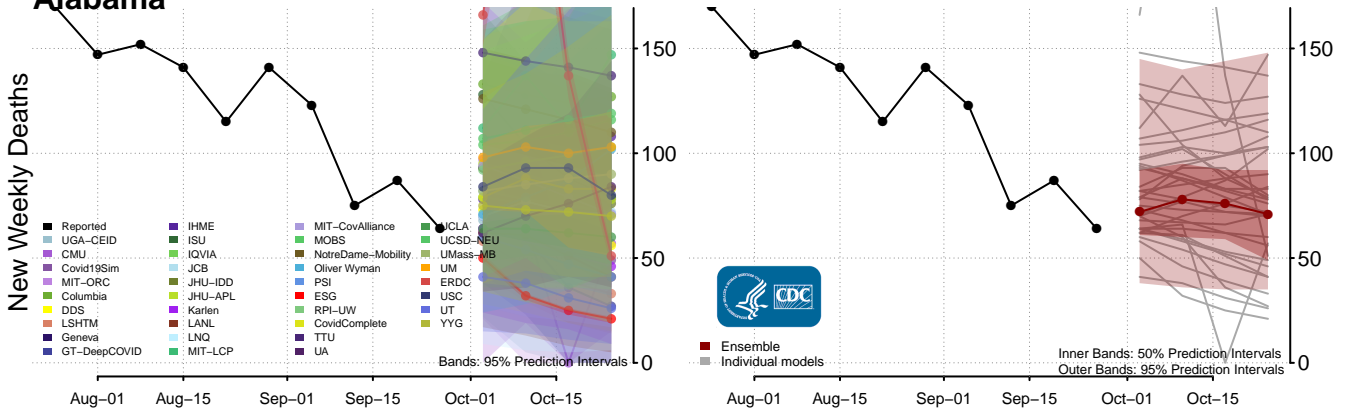


National

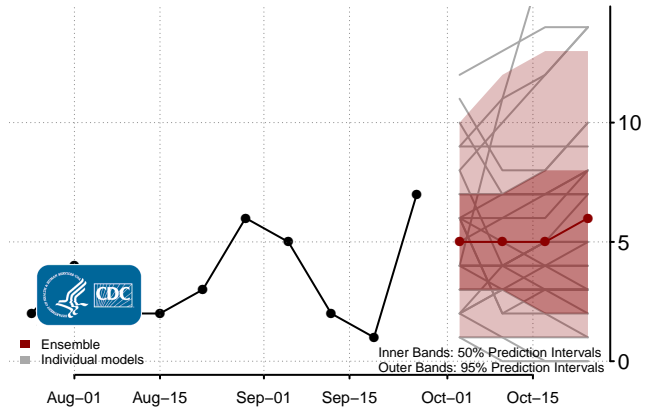
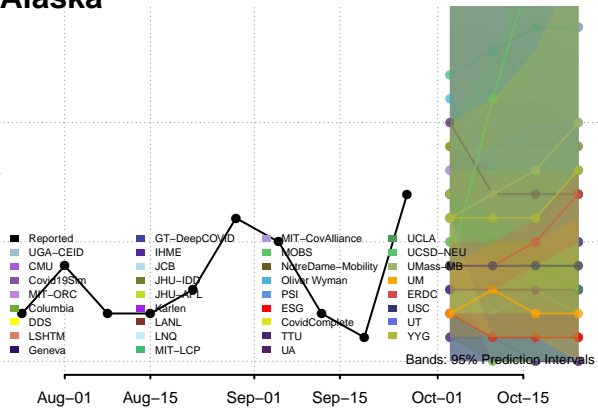


Alabama

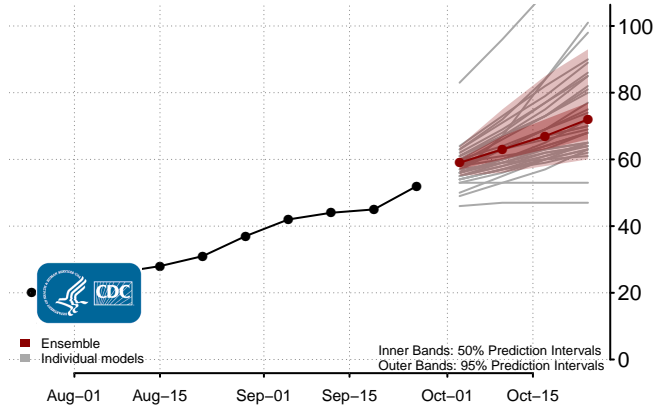
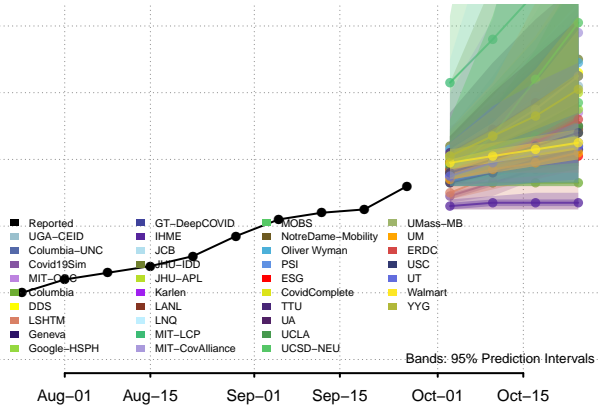


Alaska

New Weekly Deaths

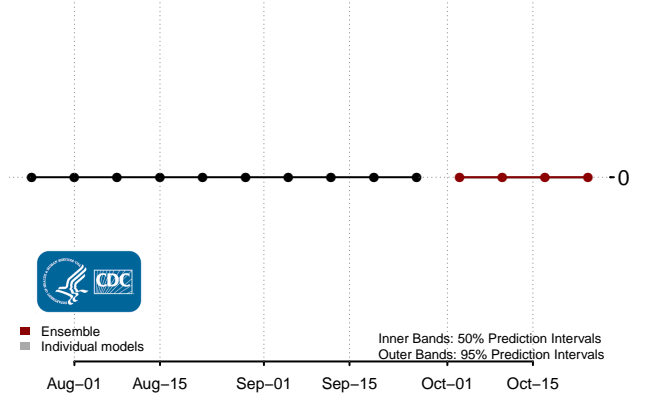
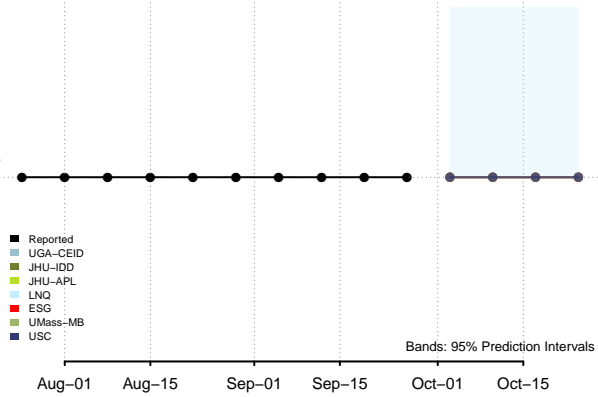


Total Deaths

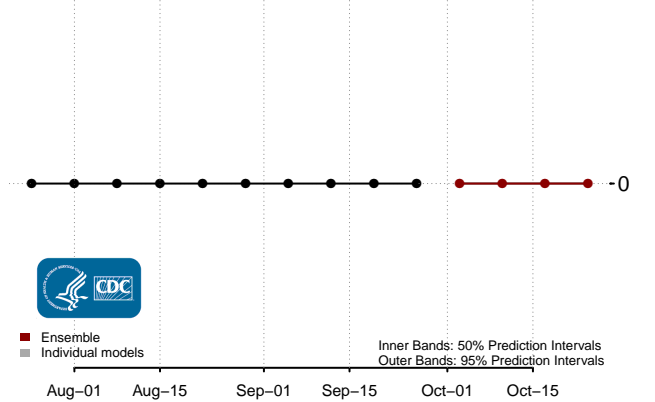
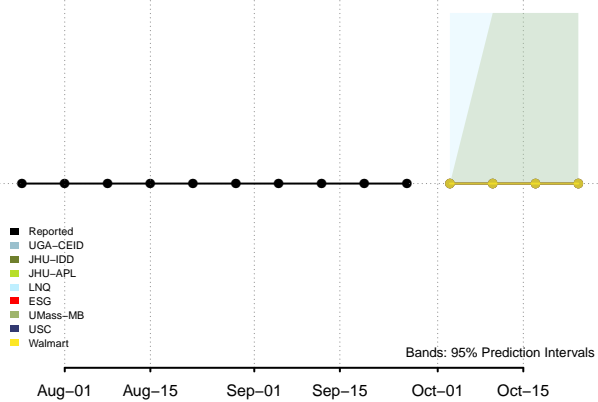


American Samoa

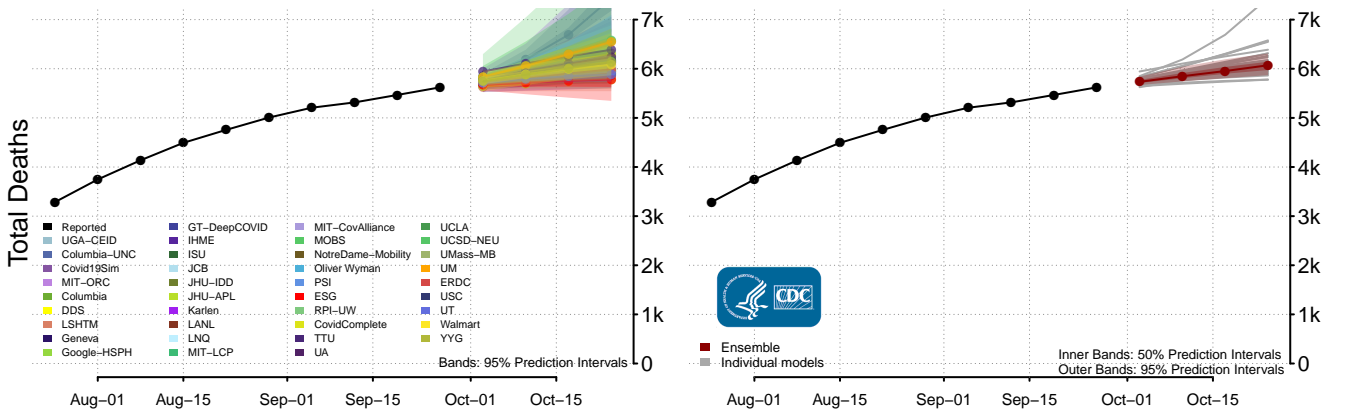
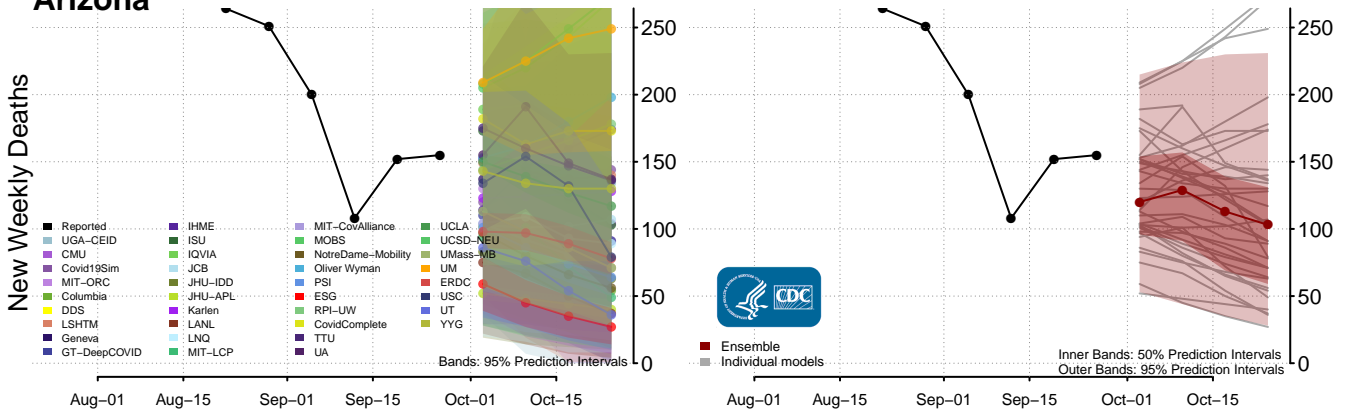
New Weekly Deaths



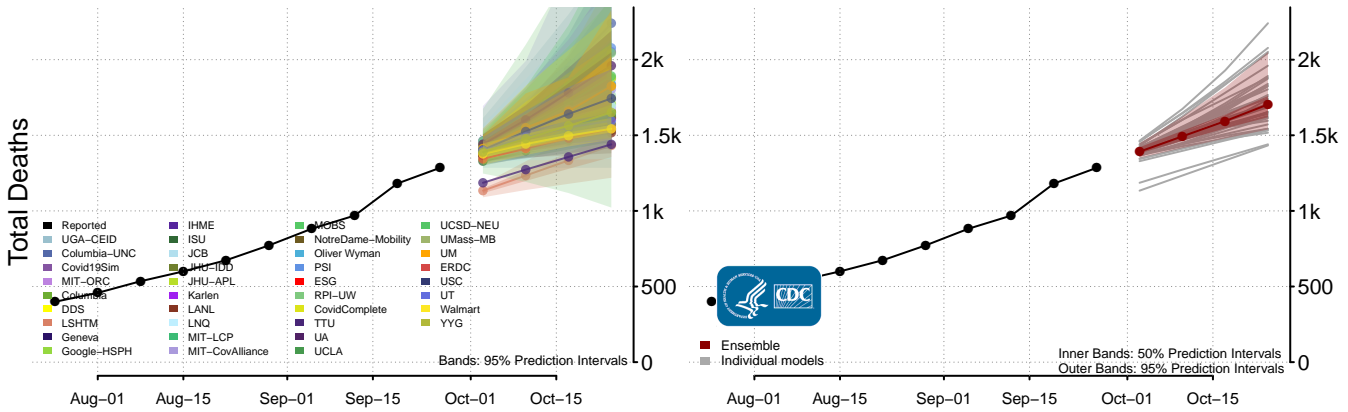
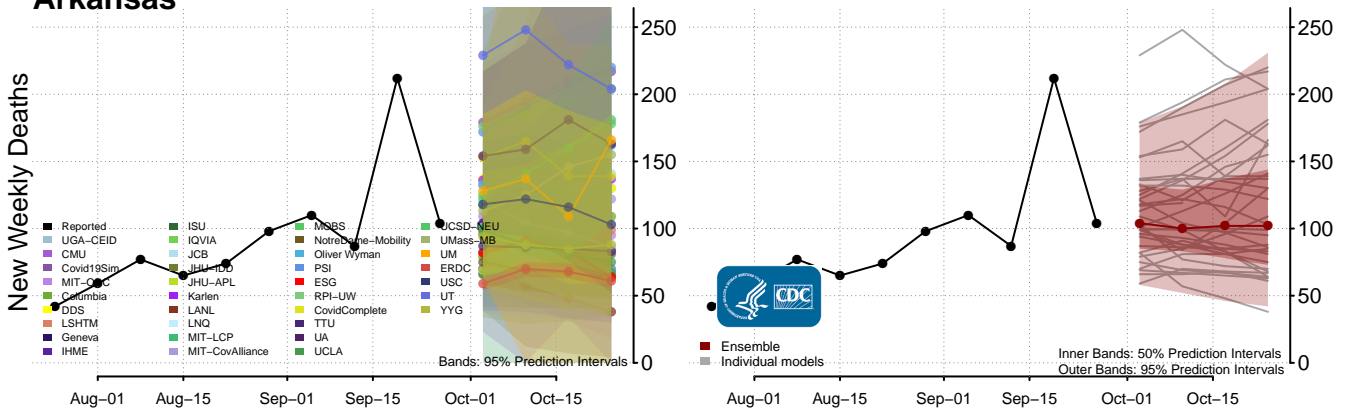
Total Deaths

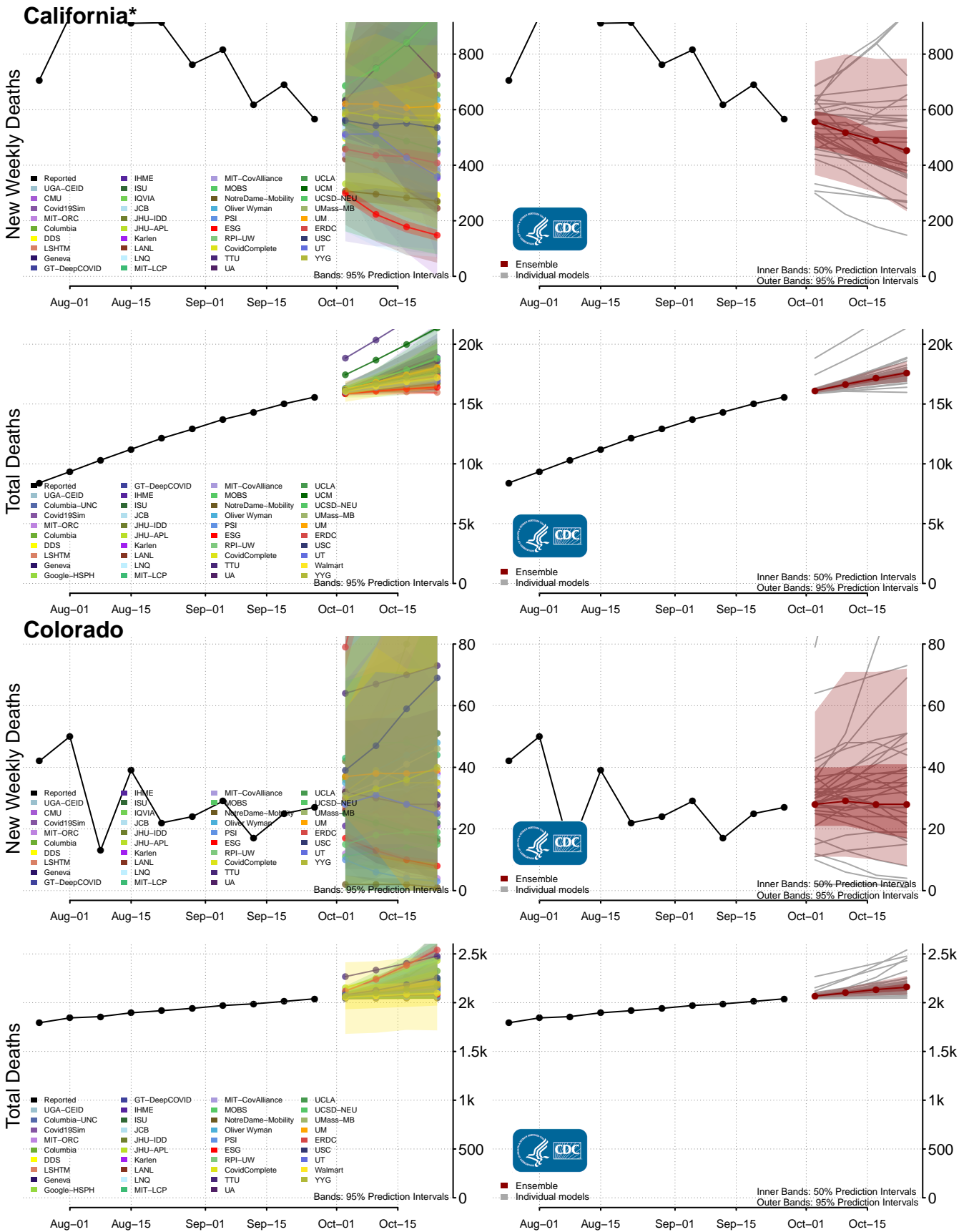


Arizona



Arkansas

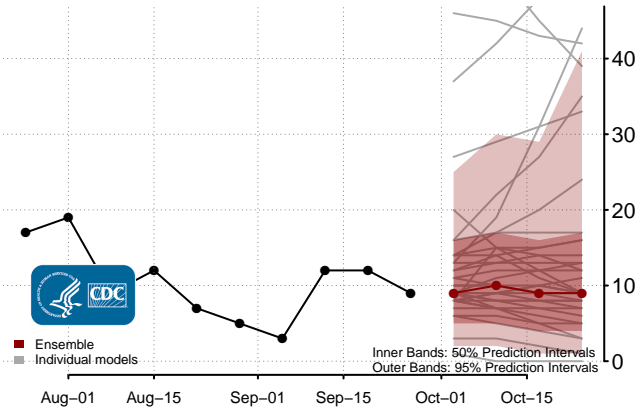
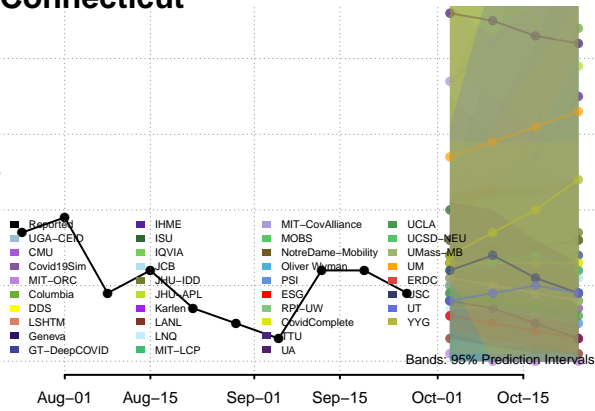




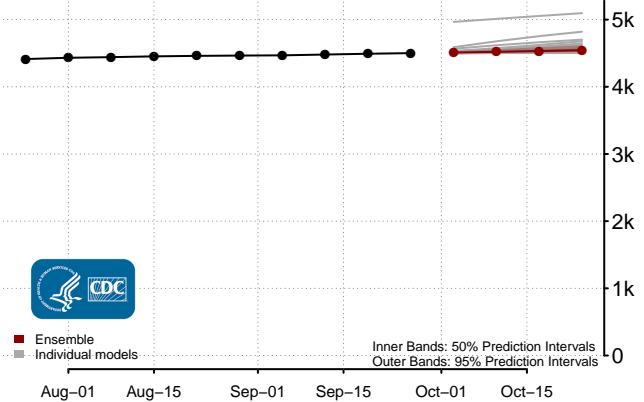
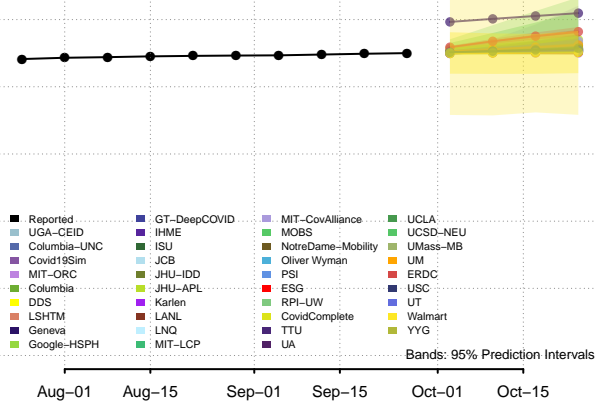
*New weekly deaths may decrease in this location over the next four weeks. For these locations, the ensemble forecast indicates a probability of 0.75 or greater that fewer deaths will be reported in week four of the forecast than in the last reported week.

Connecticut

New Weekly Deaths

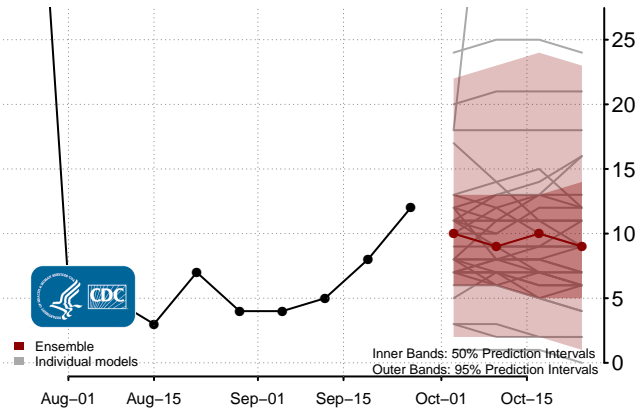
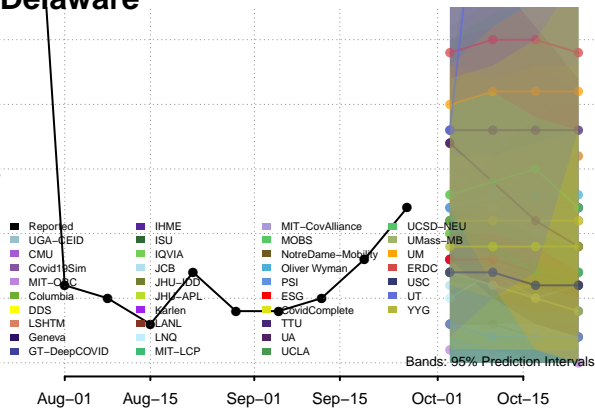


Total Deaths

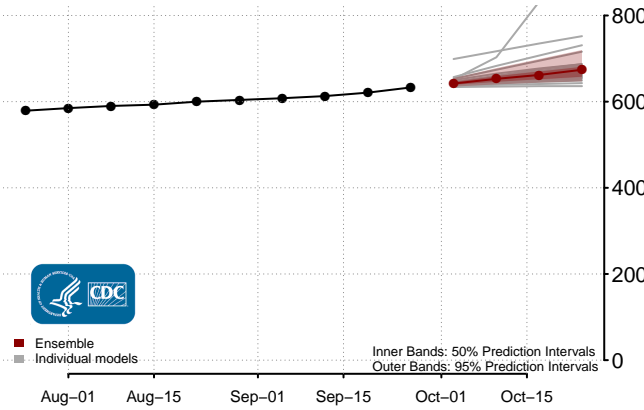
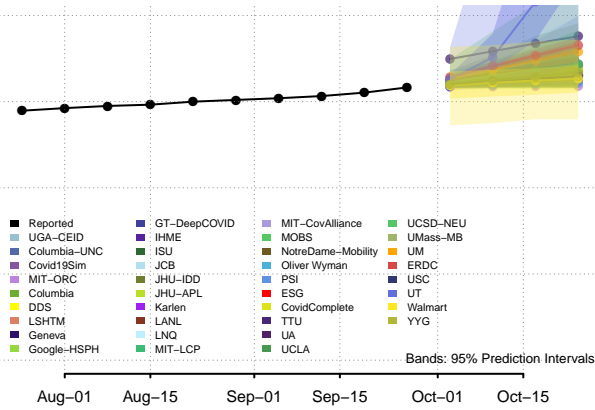


Delaware

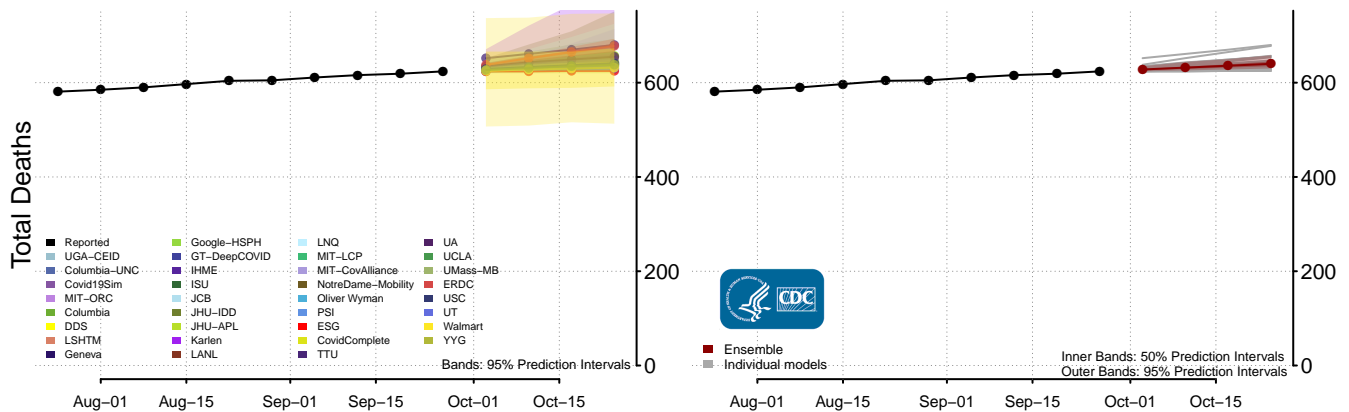
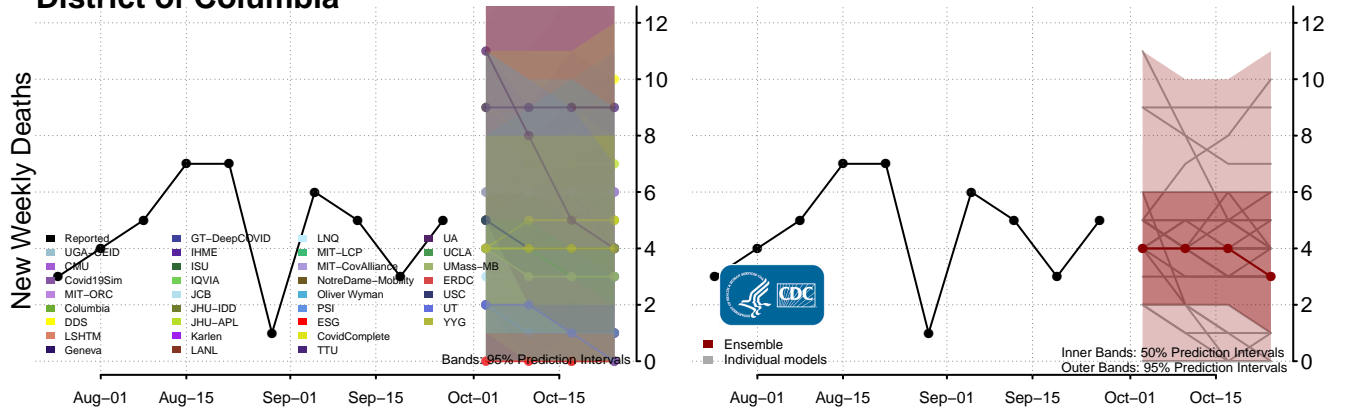
New Weekly Deaths



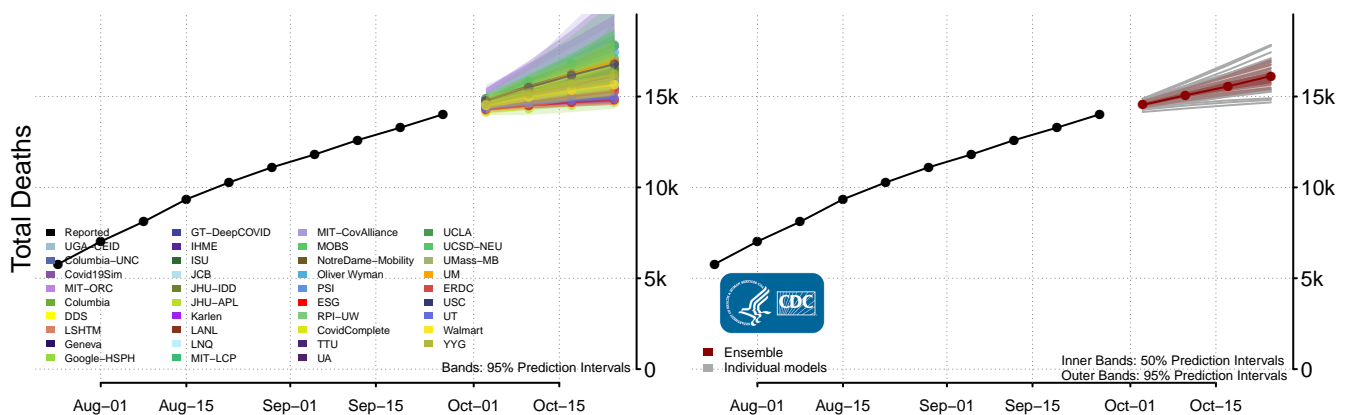
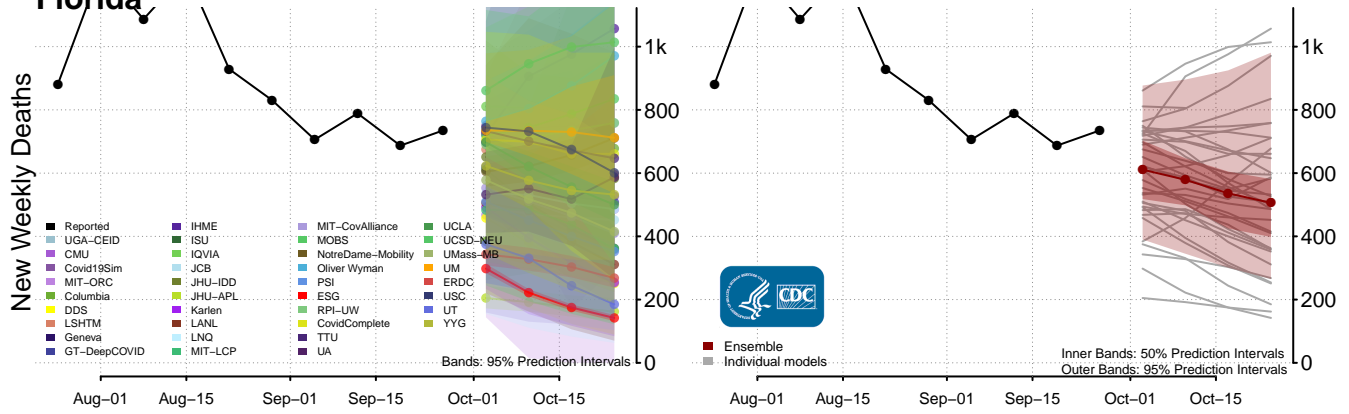
Total Deaths



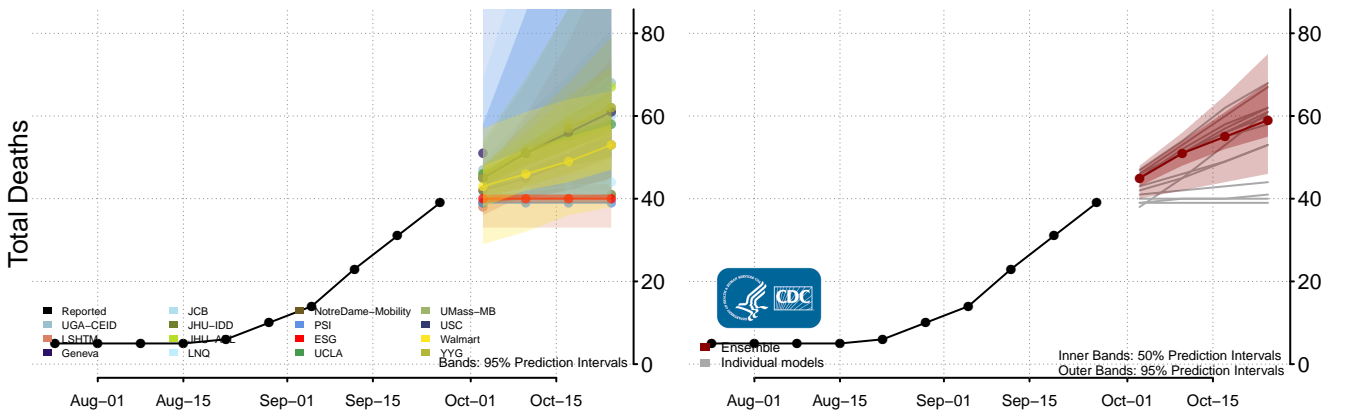
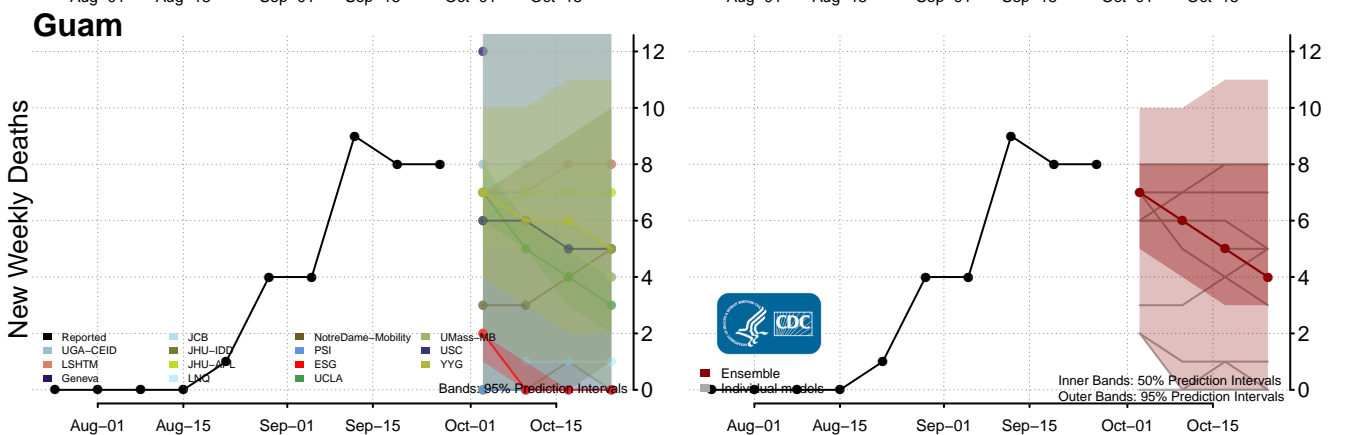
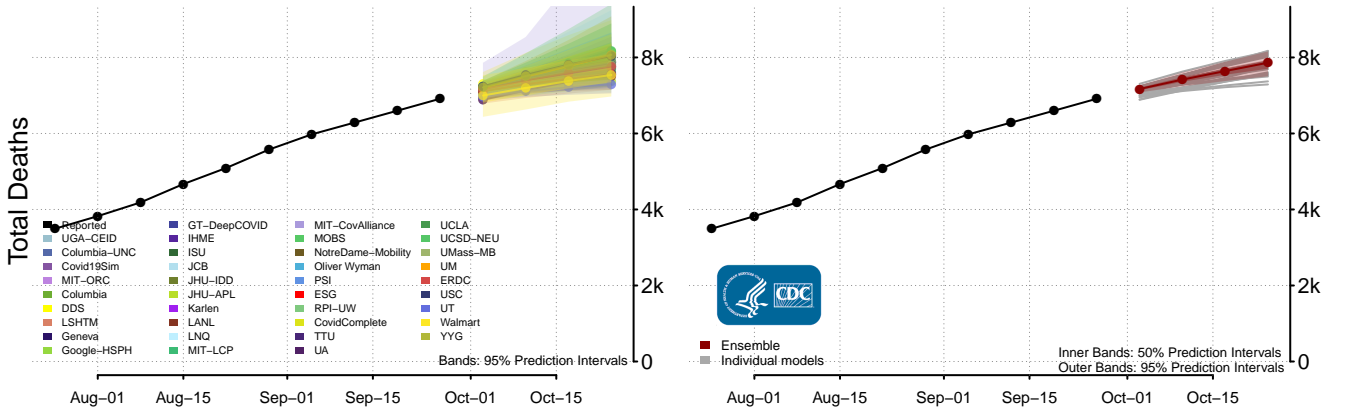
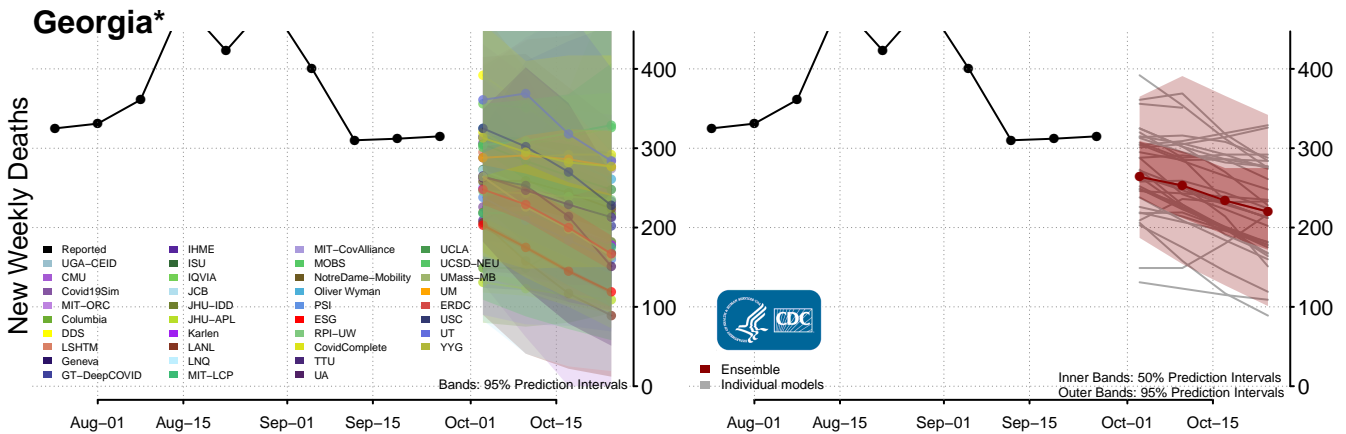
District of Columbia



Florida*

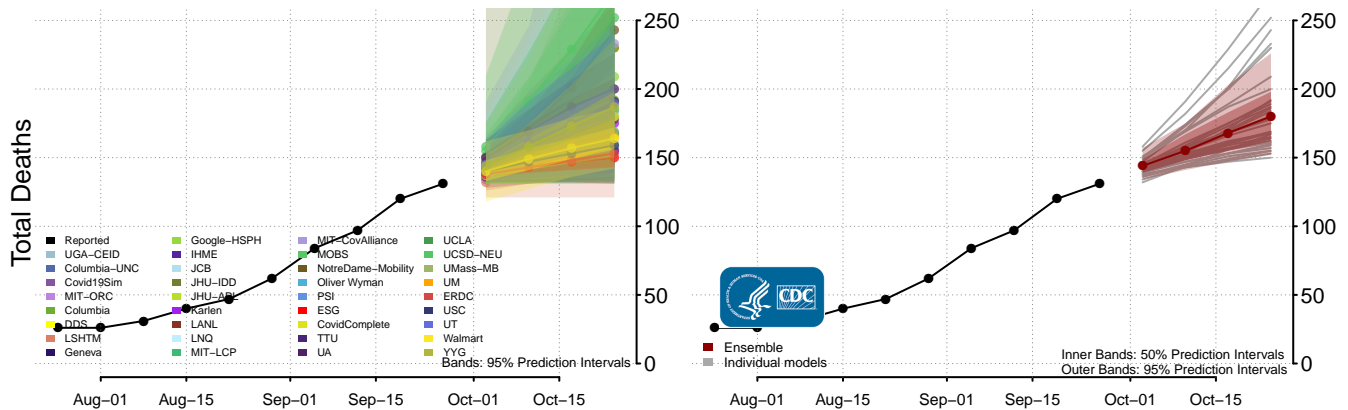
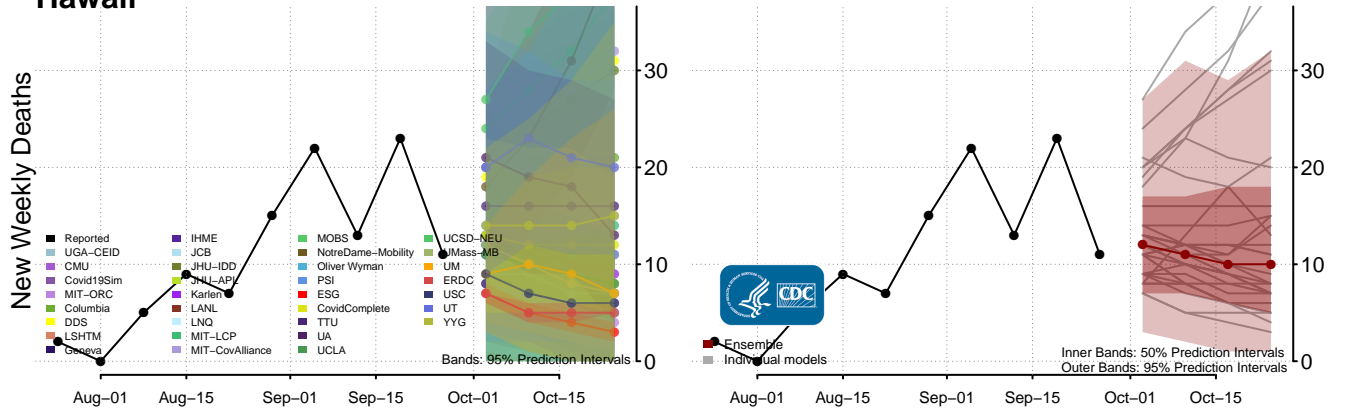


*New weekly deaths may decrease in this location over the next four weeks. For these locations, the ensemble forecast indicates a probability of 0.75 or greater that fewer deaths will be reported in week four of the forecast than in the last reported week.

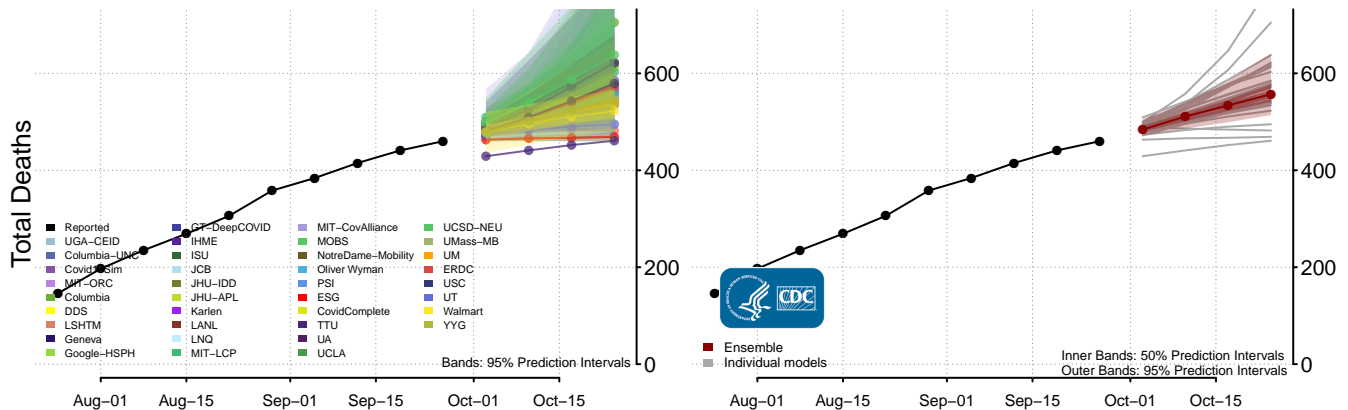
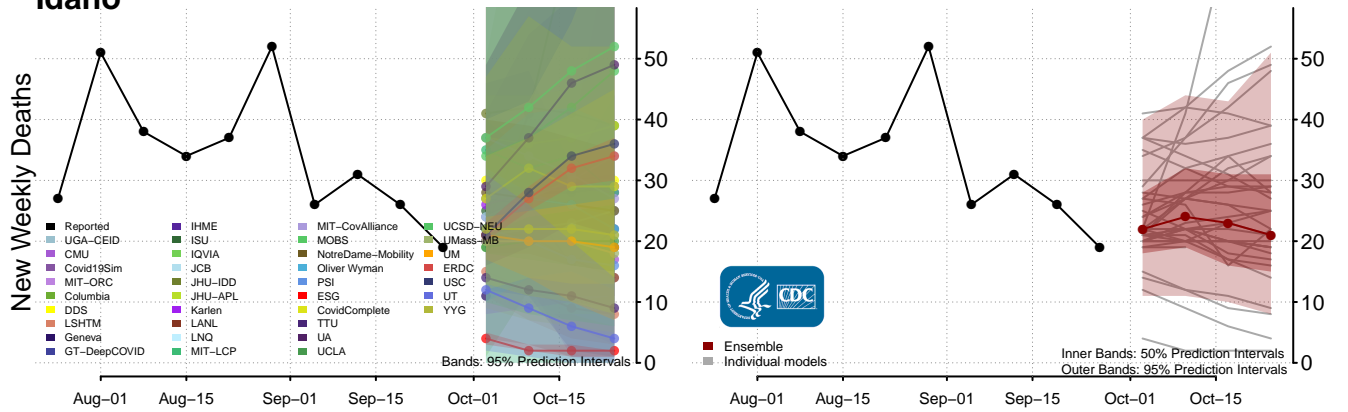


*New weekly deaths may decrease in this location over the next four weeks. For these locations, the ensemble forecast indicates a probability of 0.75 or greater that fewer deaths will be reported in week four of the forecast than in the last reported week.

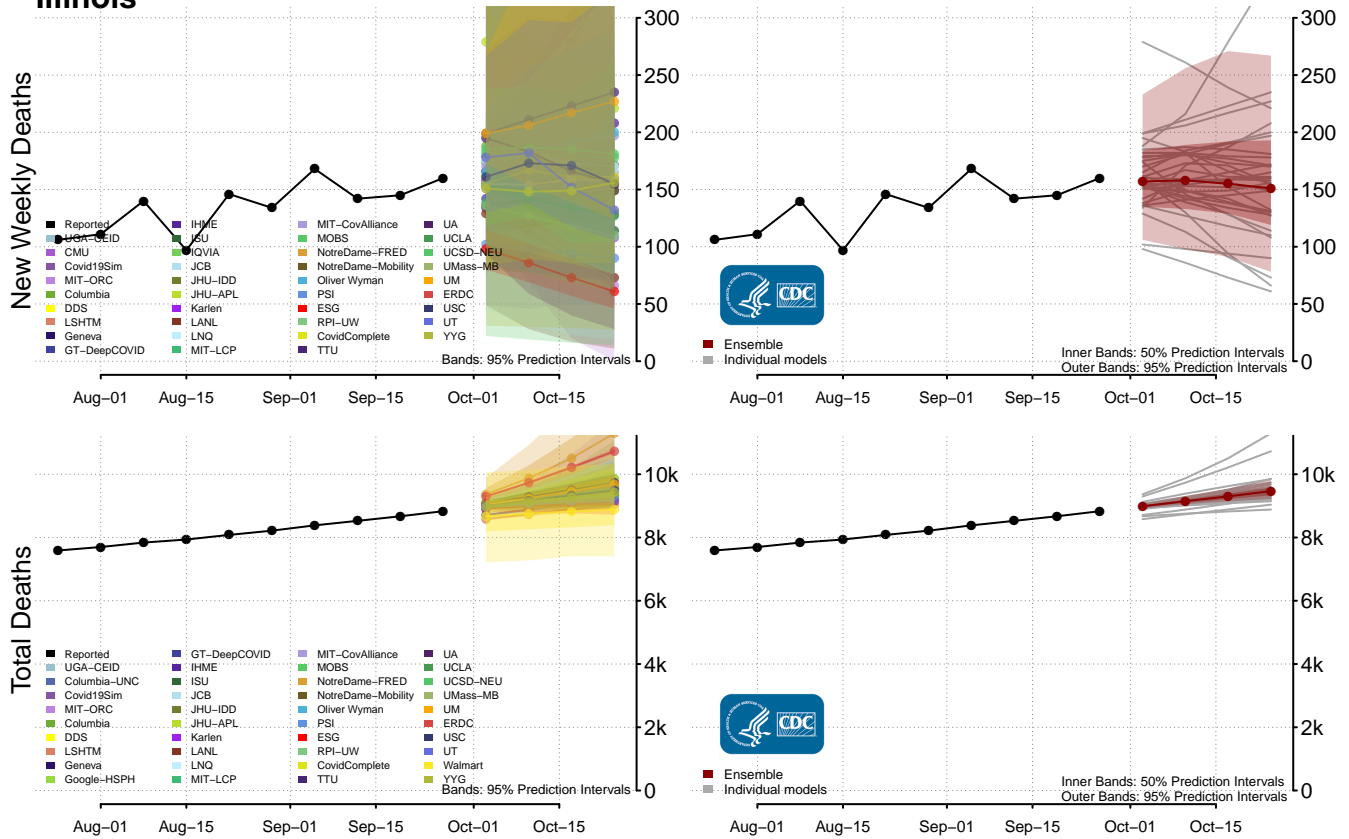
Hawaii



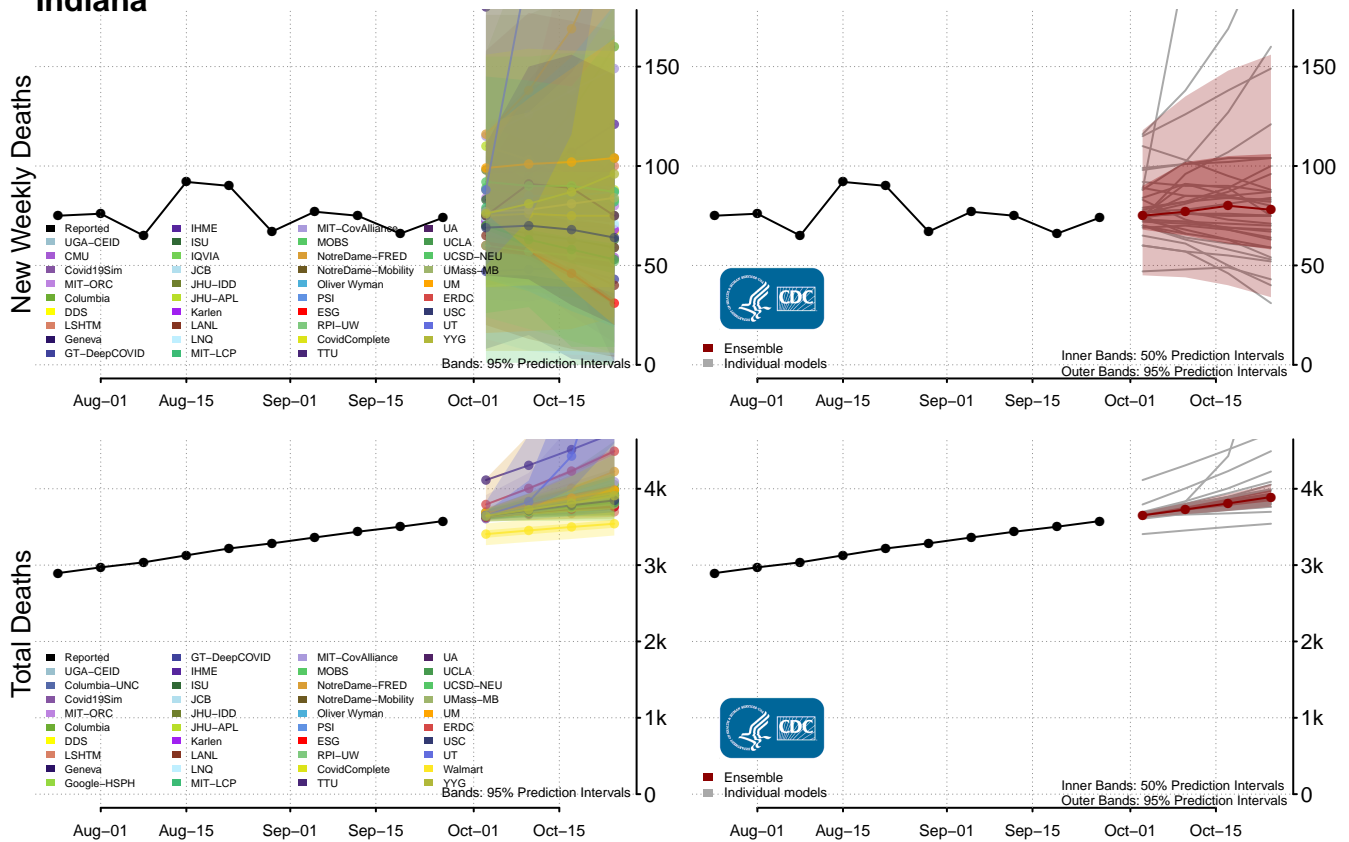
Idaho



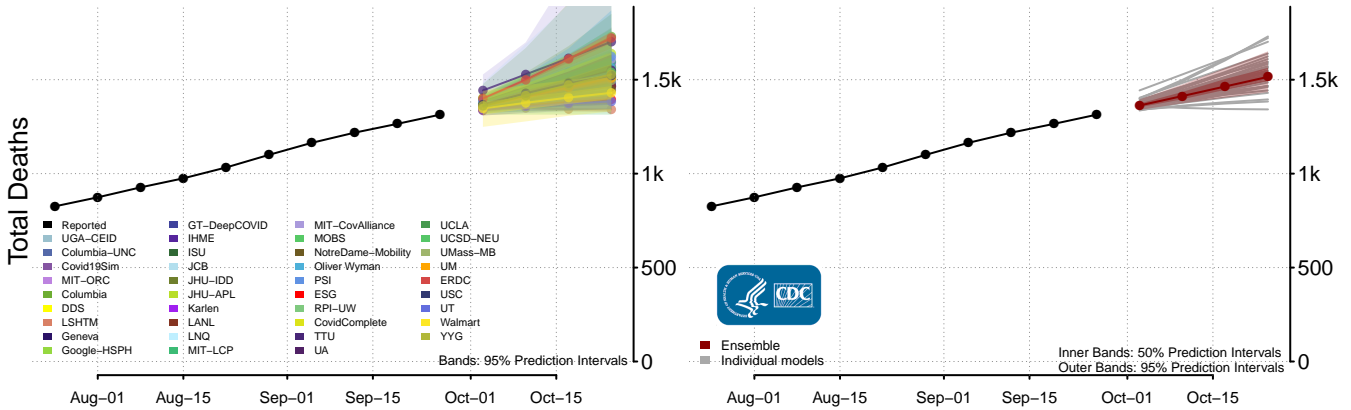
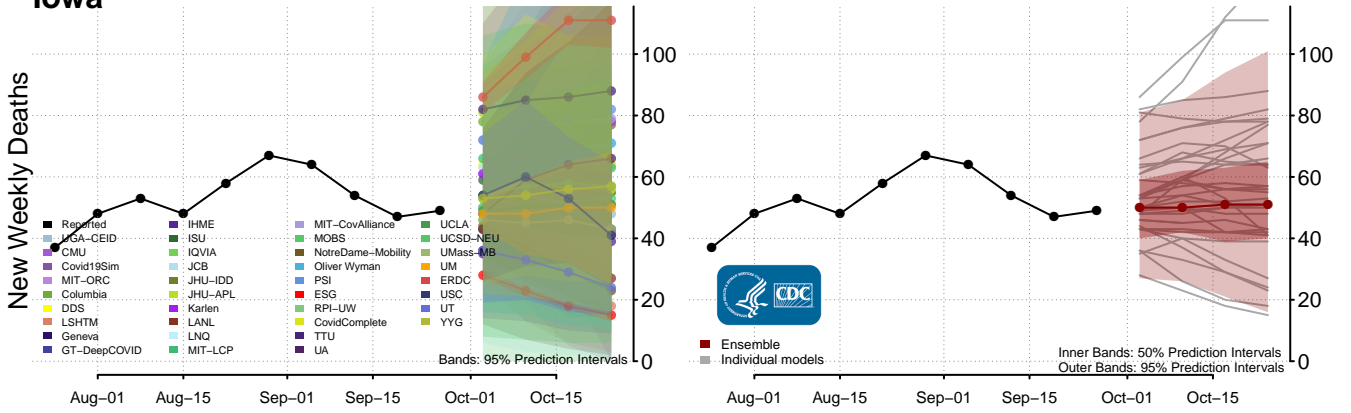
Illinois



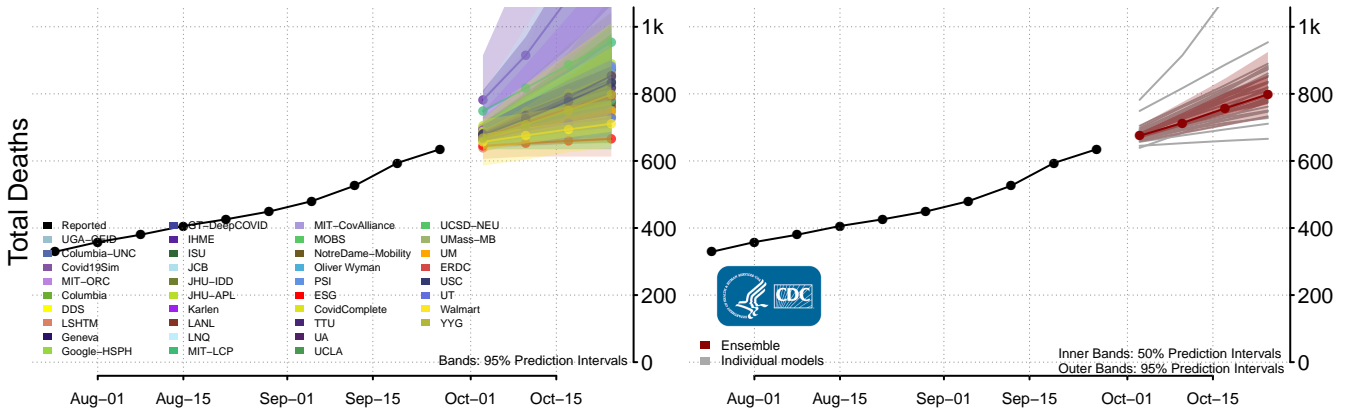
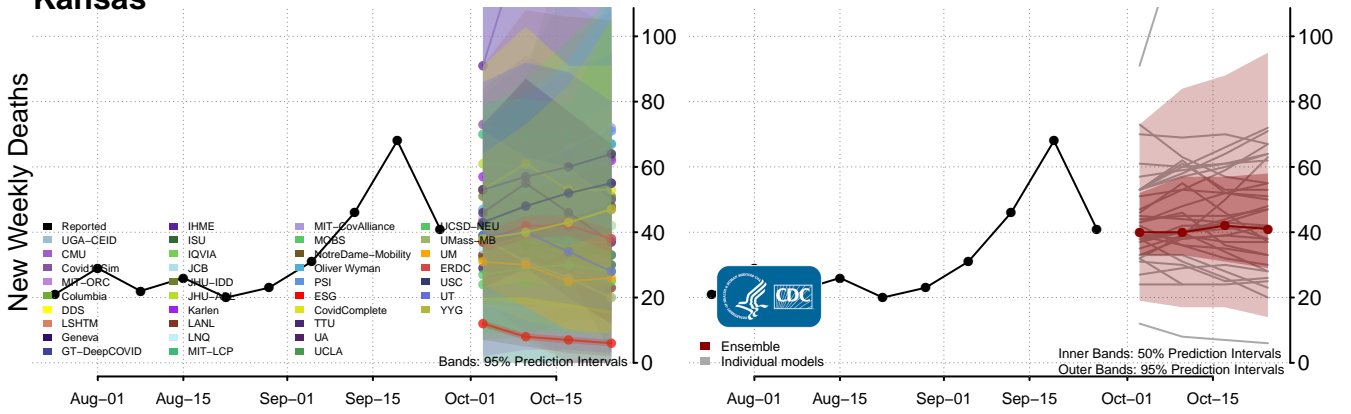
Indiana



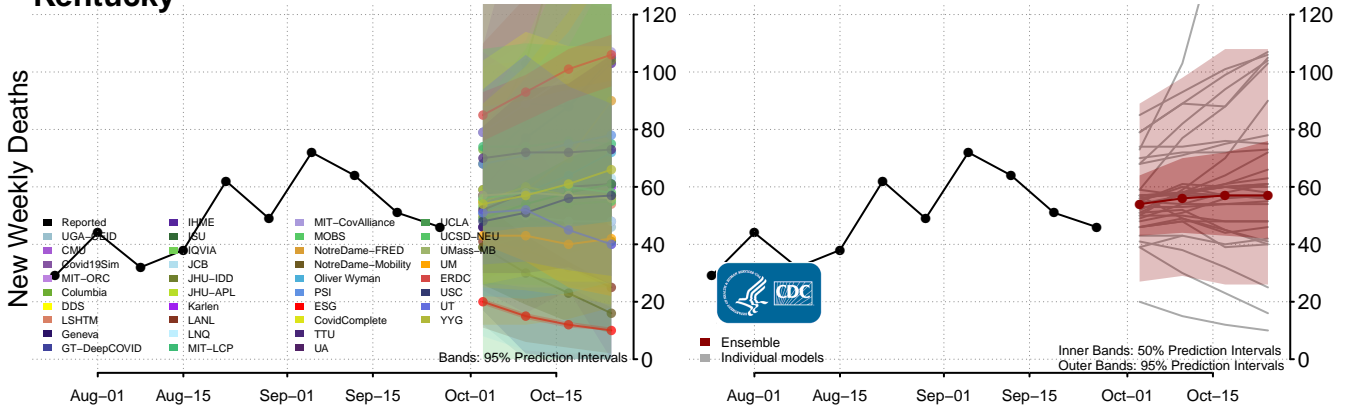
Iowa



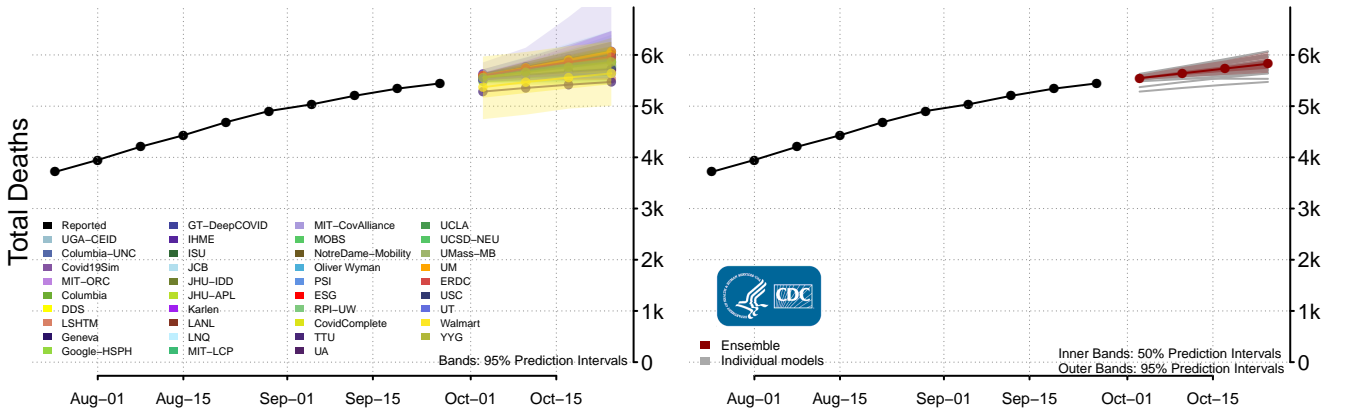
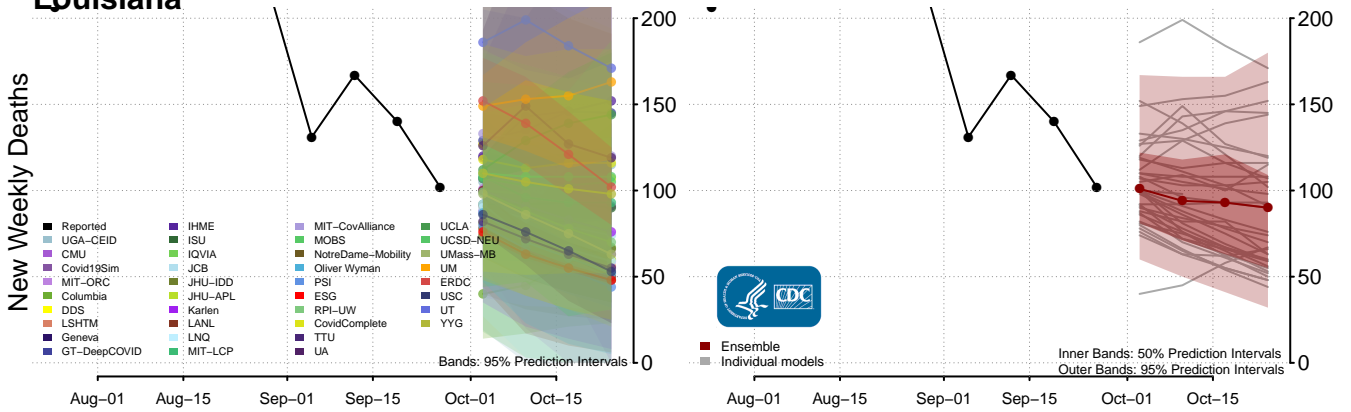
Kansas



Kentucky

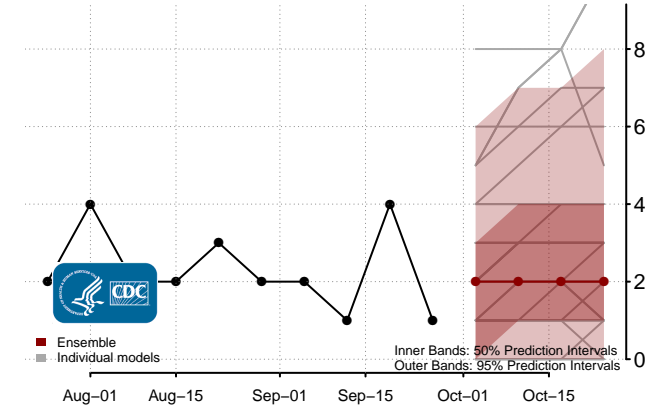
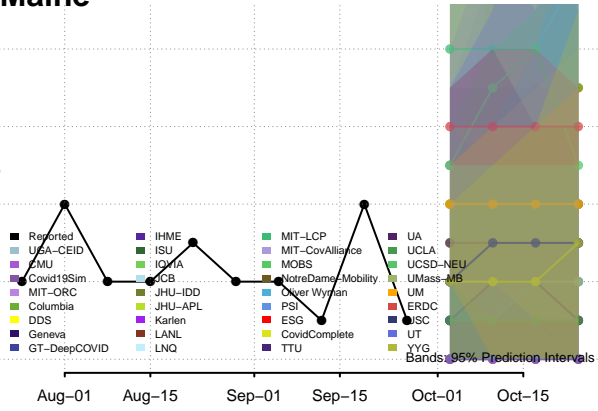


Louisiana

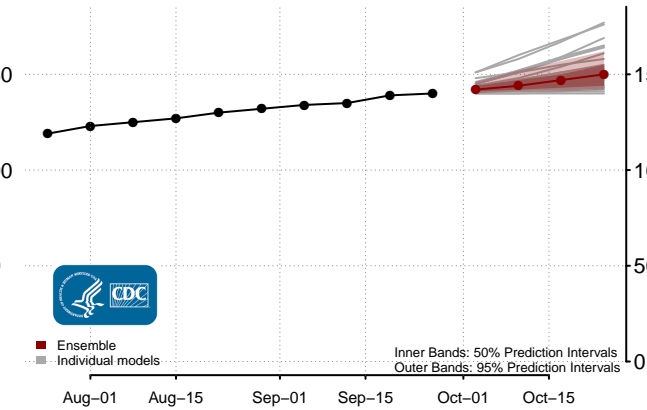
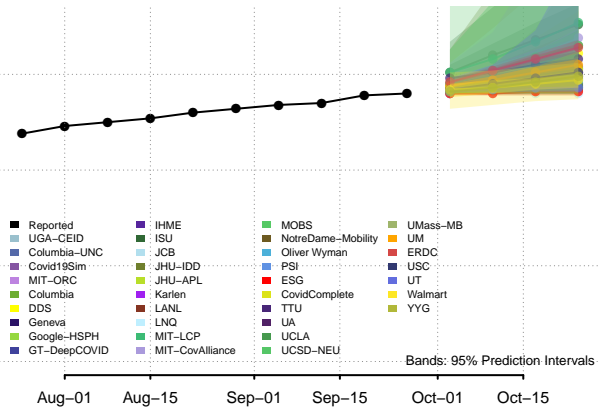


Maine

New Weekly Deaths

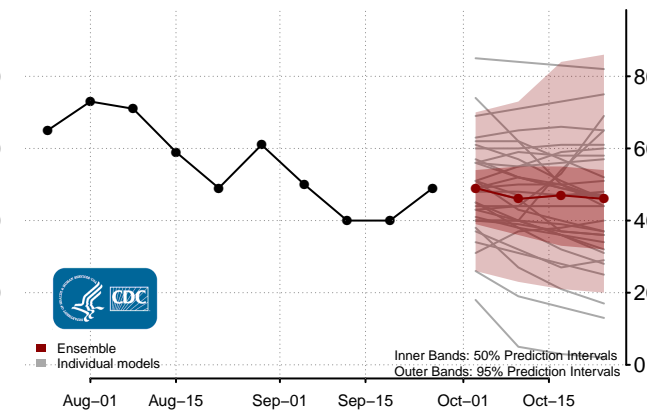
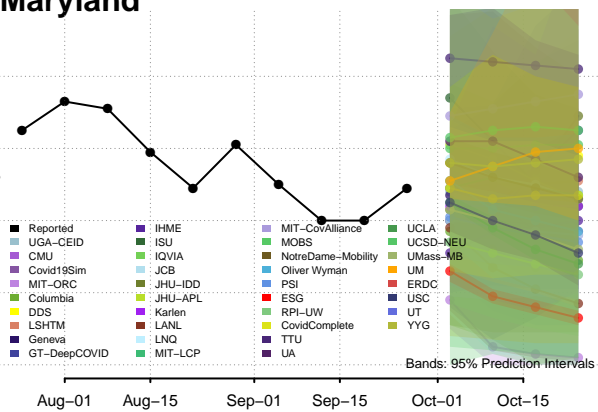


Total Deaths

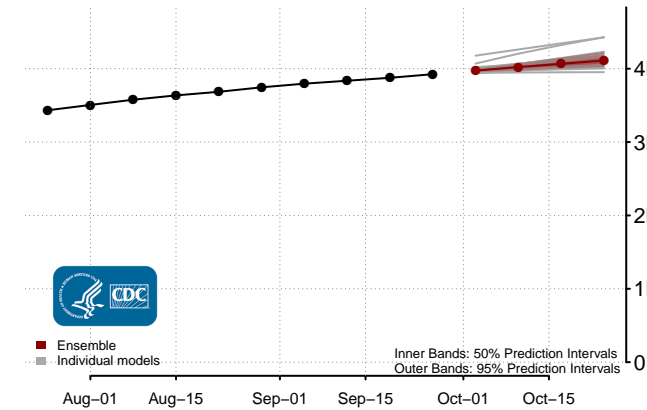
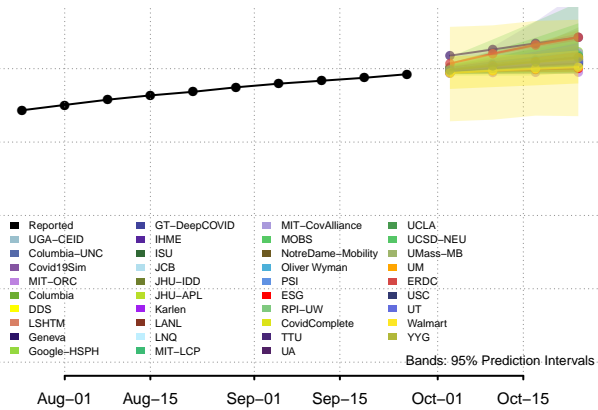


Maryland

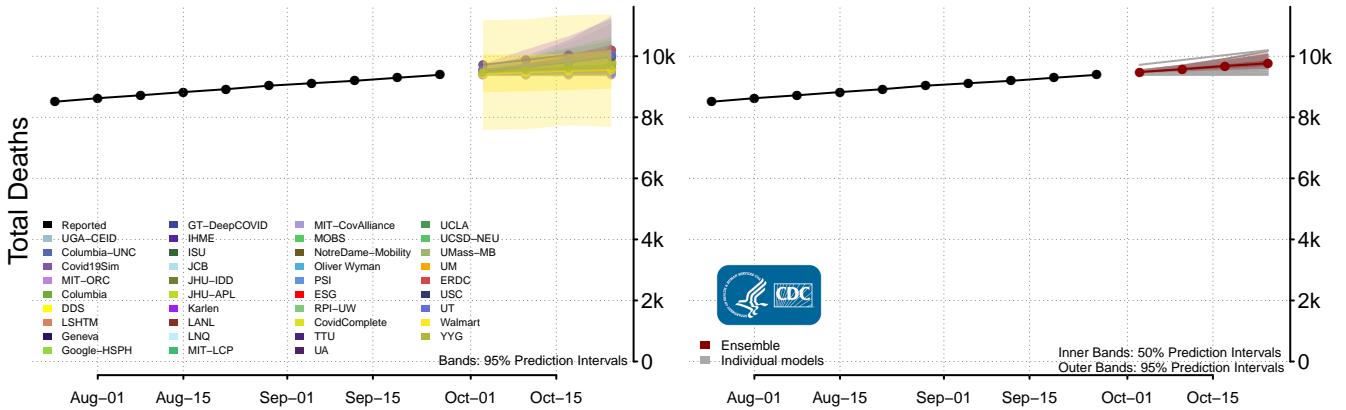
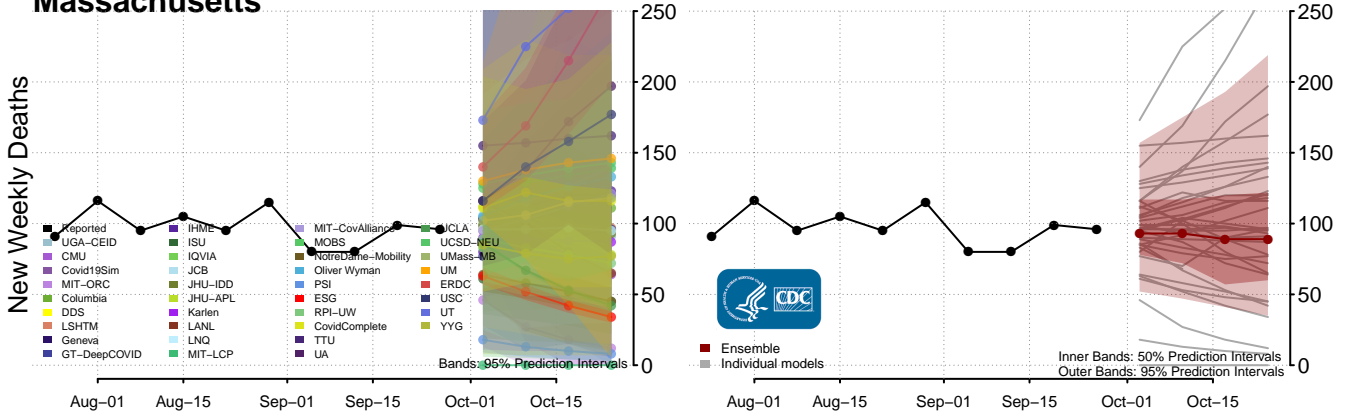
New Weekly Deaths



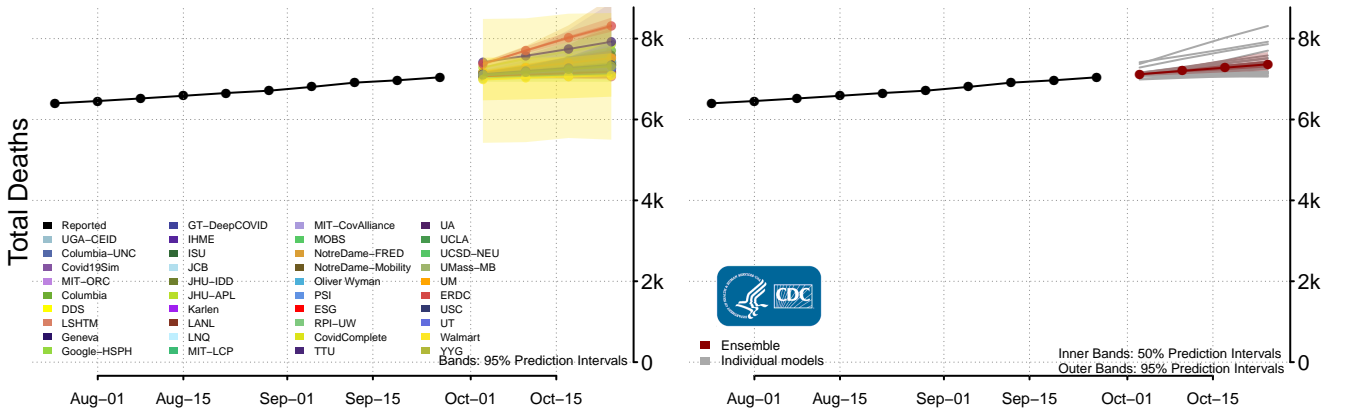
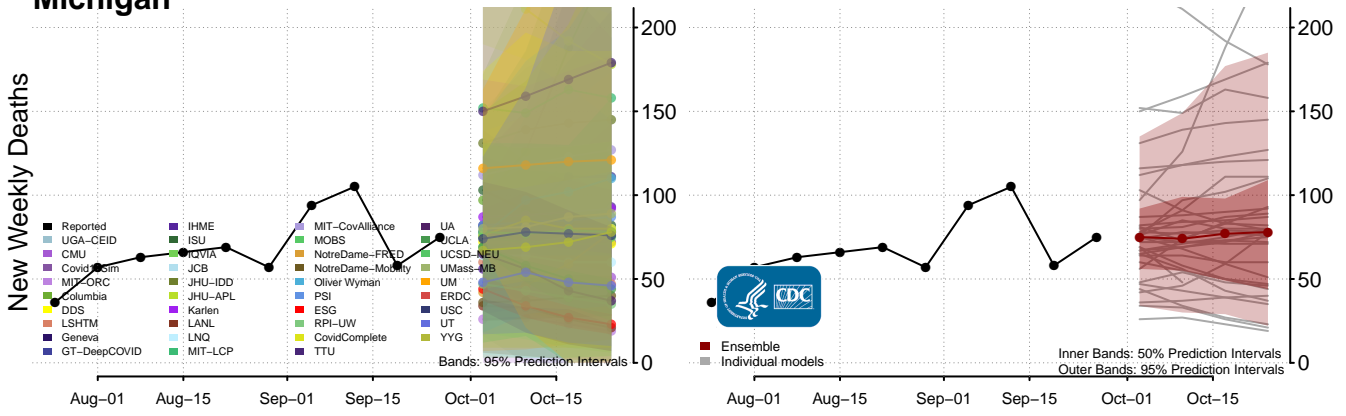
Total Deaths



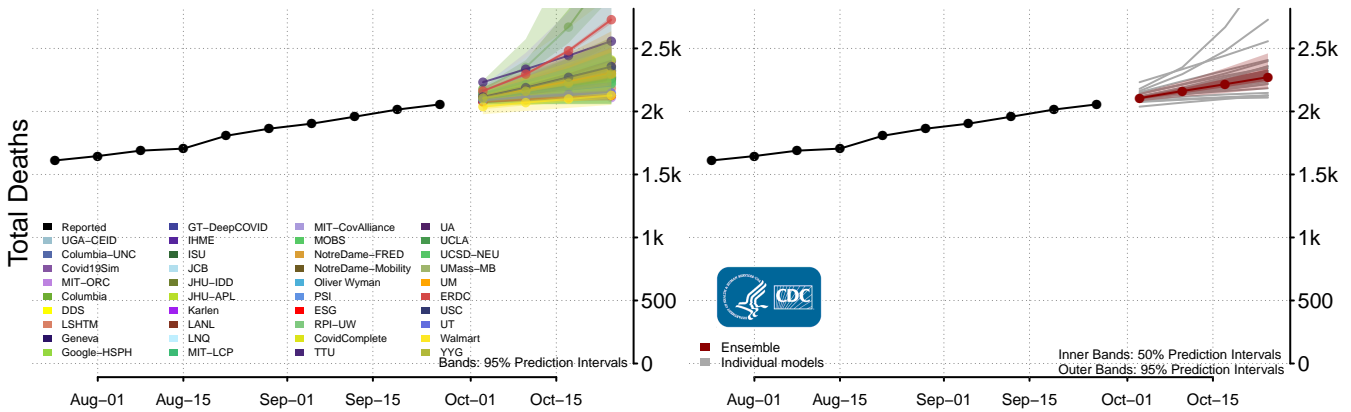
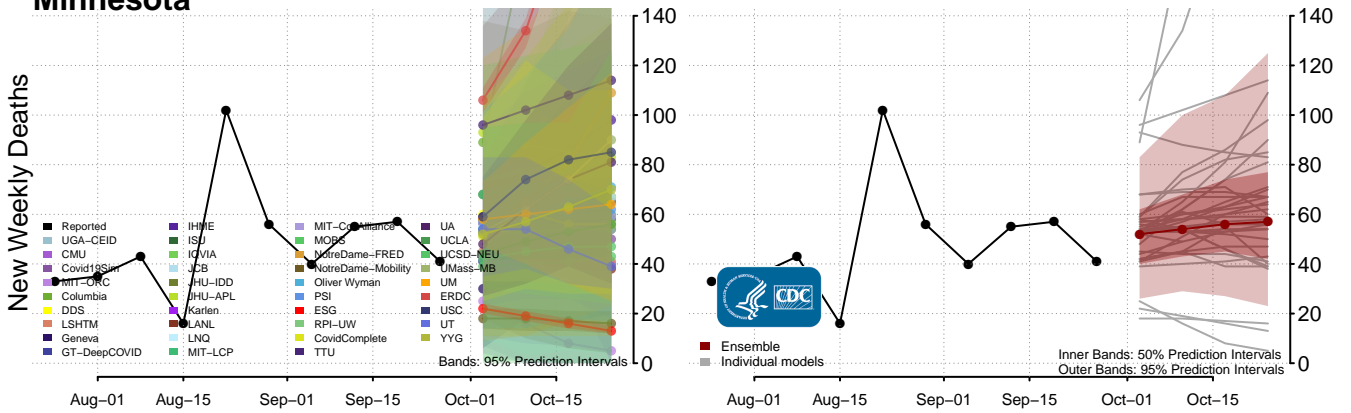
Massachusetts



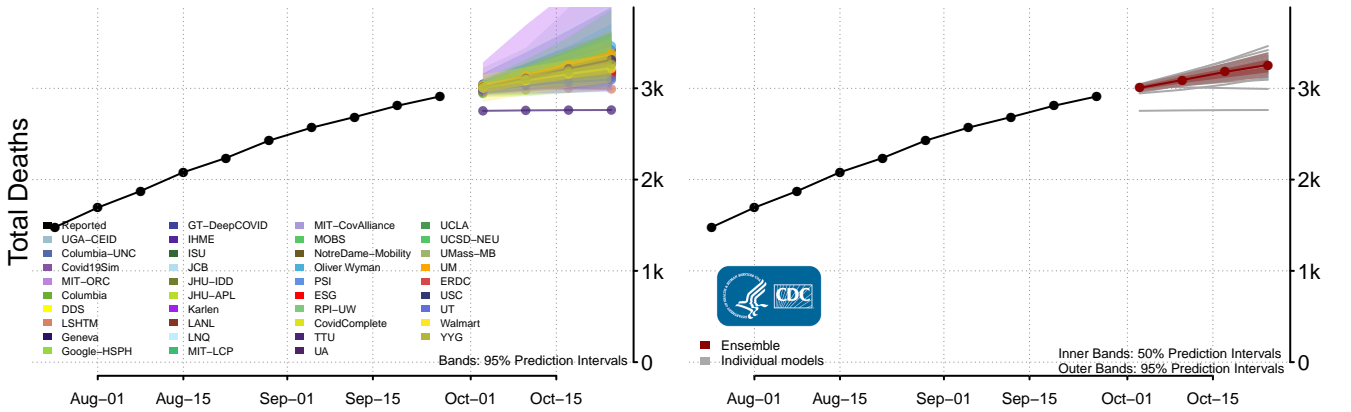
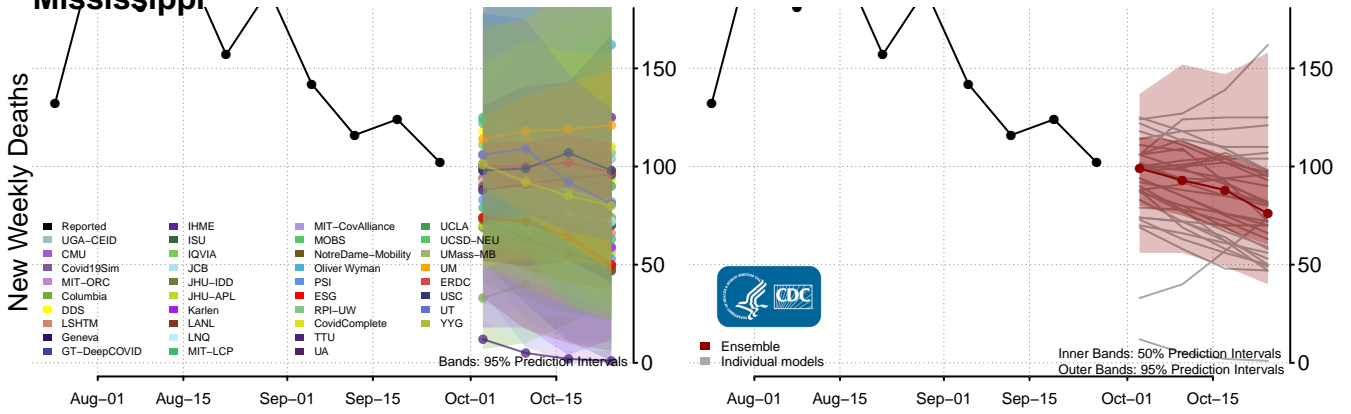
Michigan



Minnesota

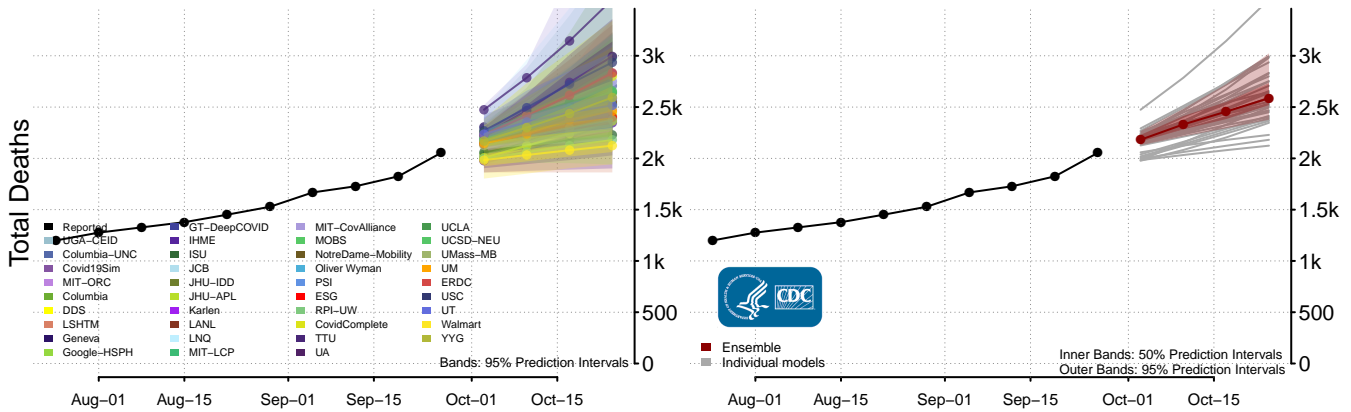
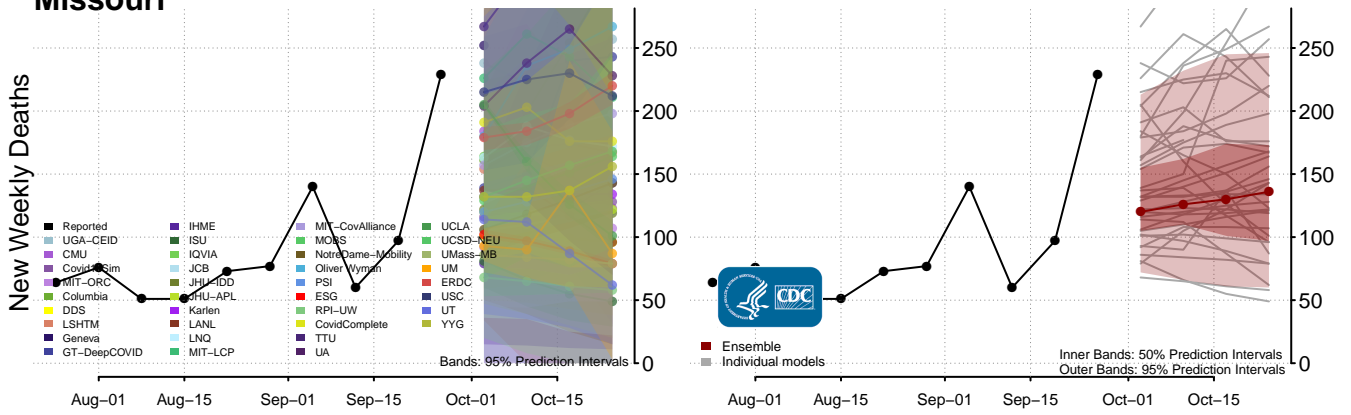


Mississippi*

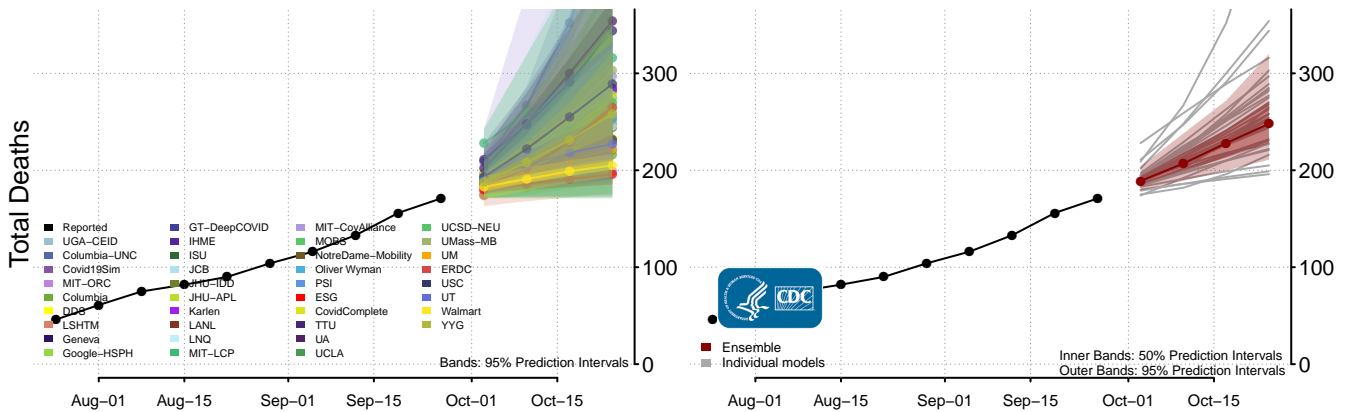
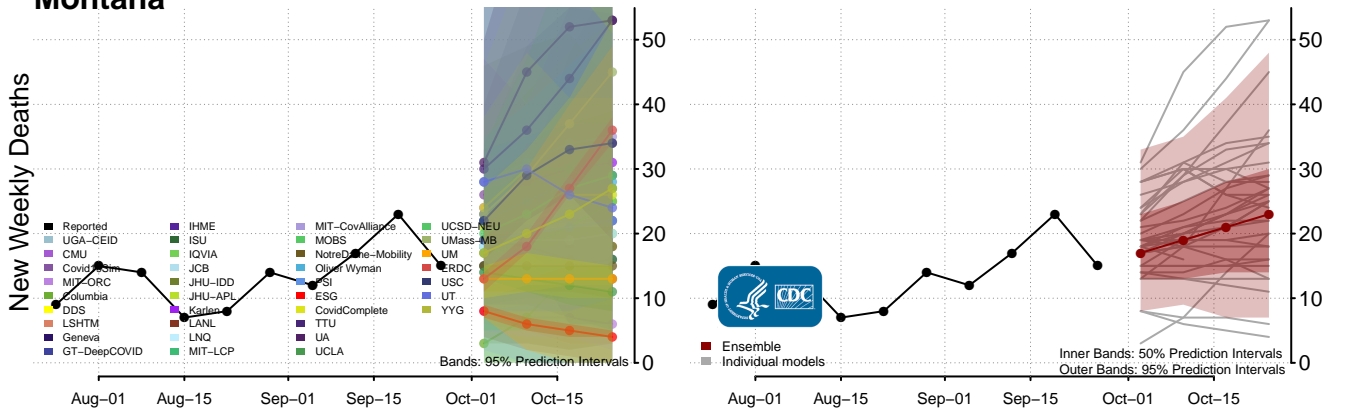


*New weekly deaths may decrease in this location over the next four weeks. For these locations, the ensemble forecast indicates a probability of 0.75 or greater that fewer deaths will be reported in week four of the forecast than in the last reported week.

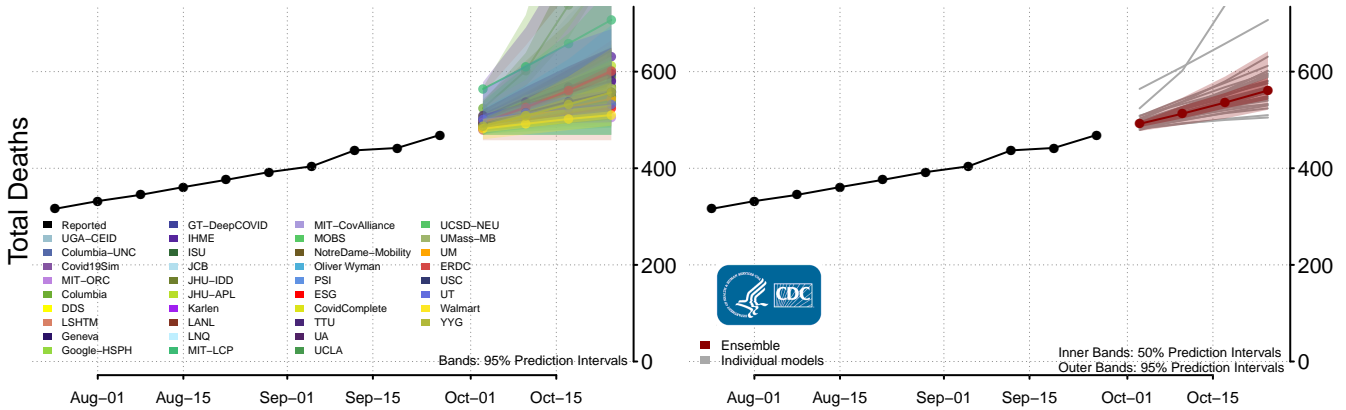
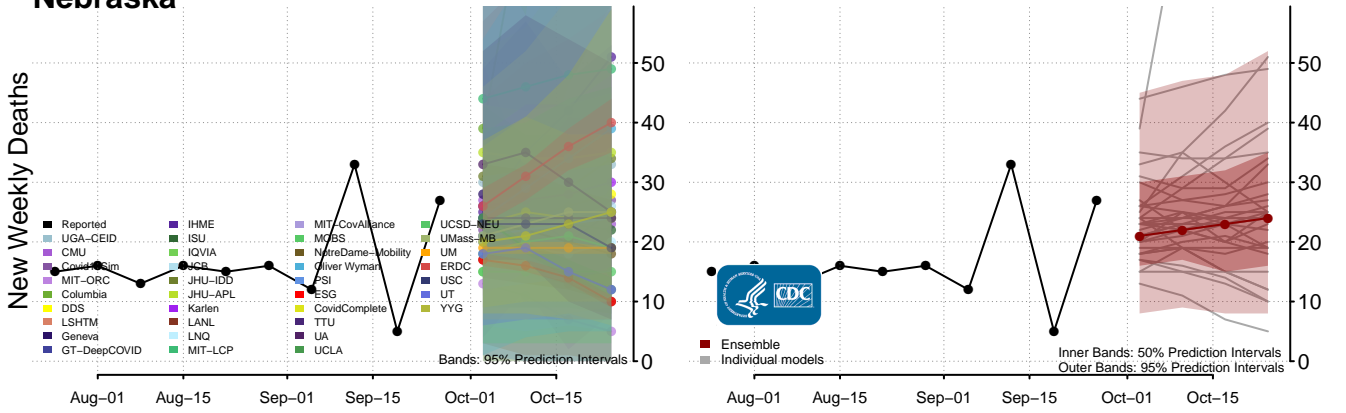
Missouri



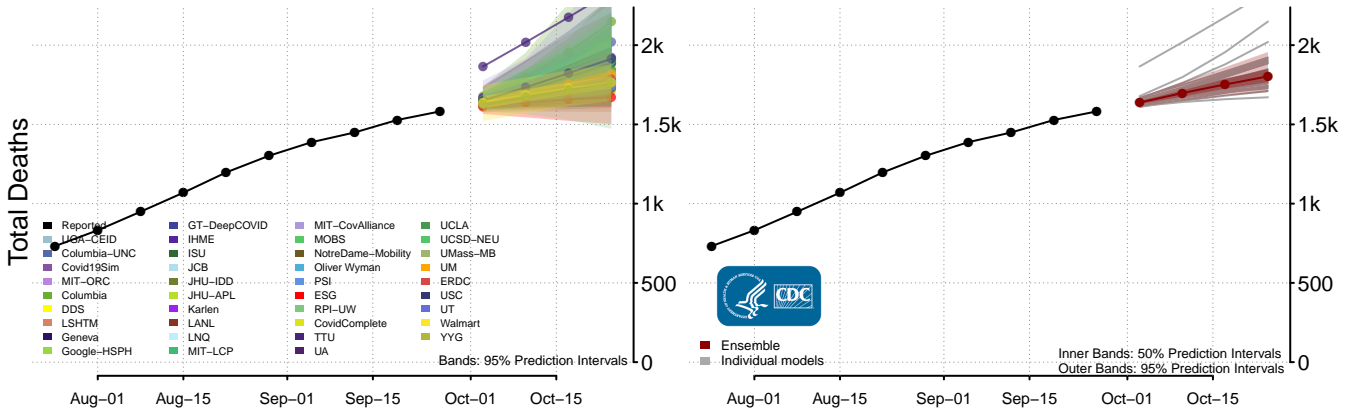
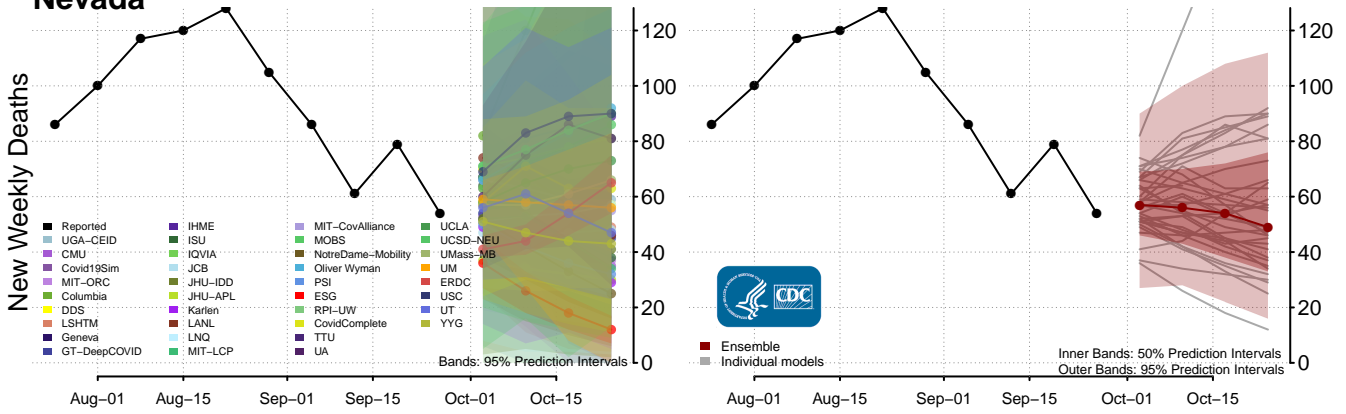
Montana



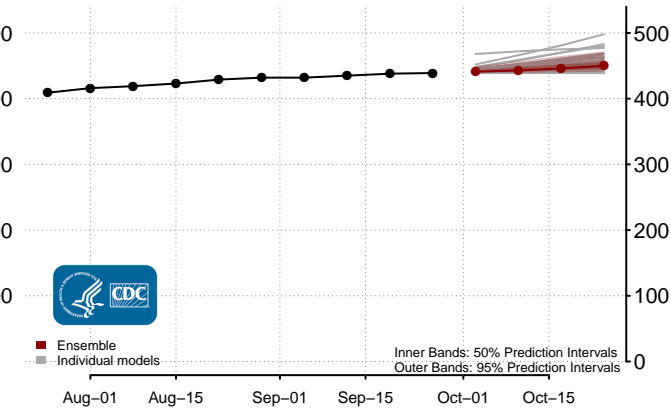
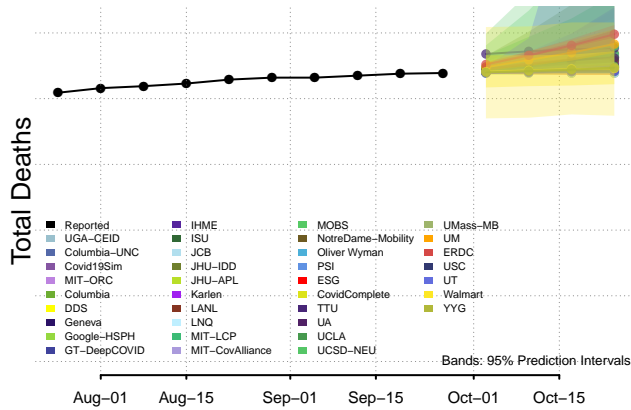
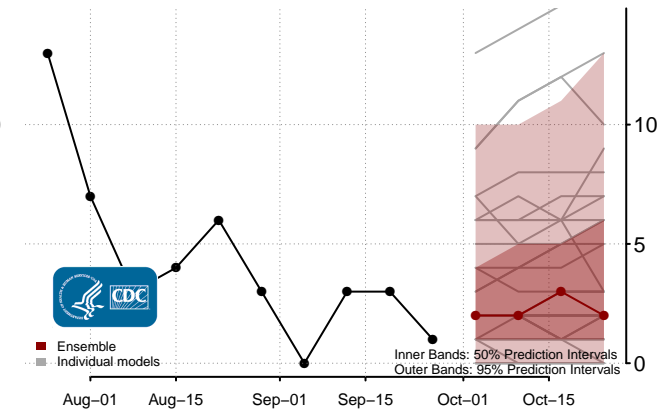
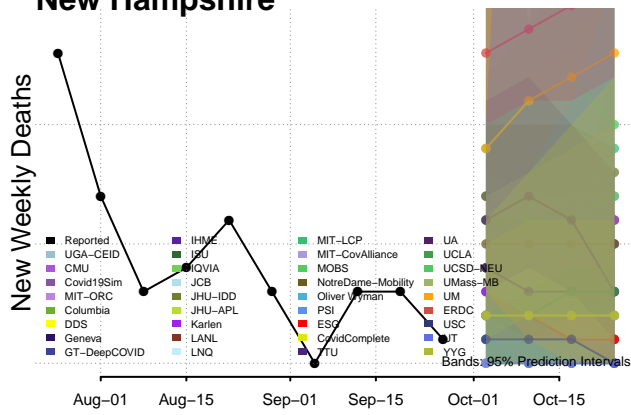
Nebraska



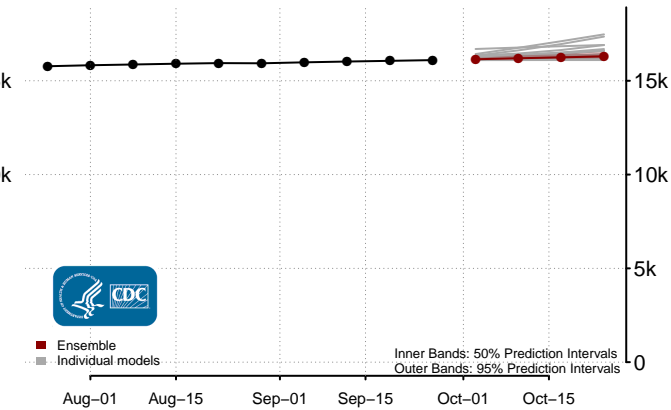
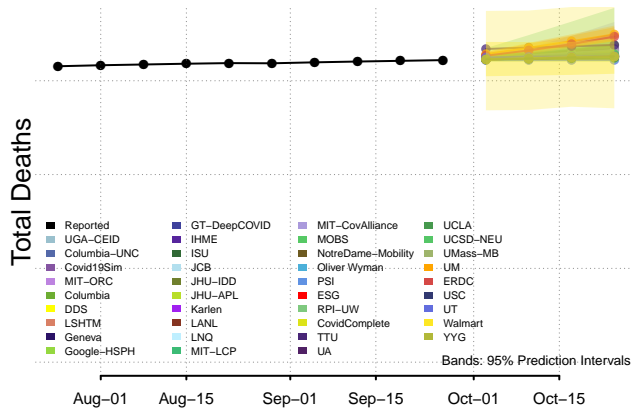
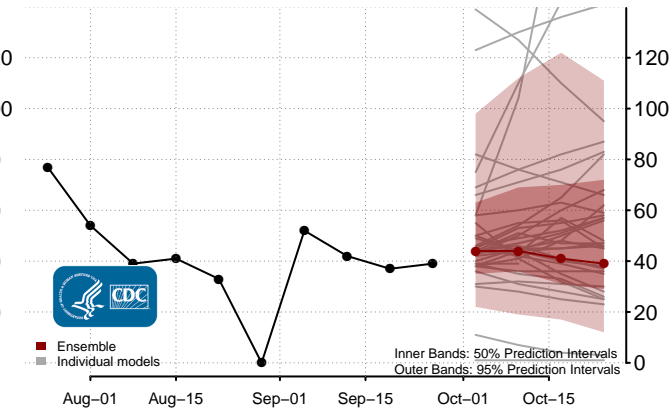
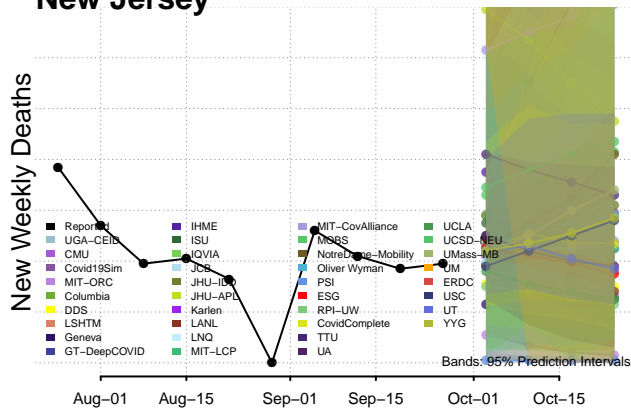
Nevada



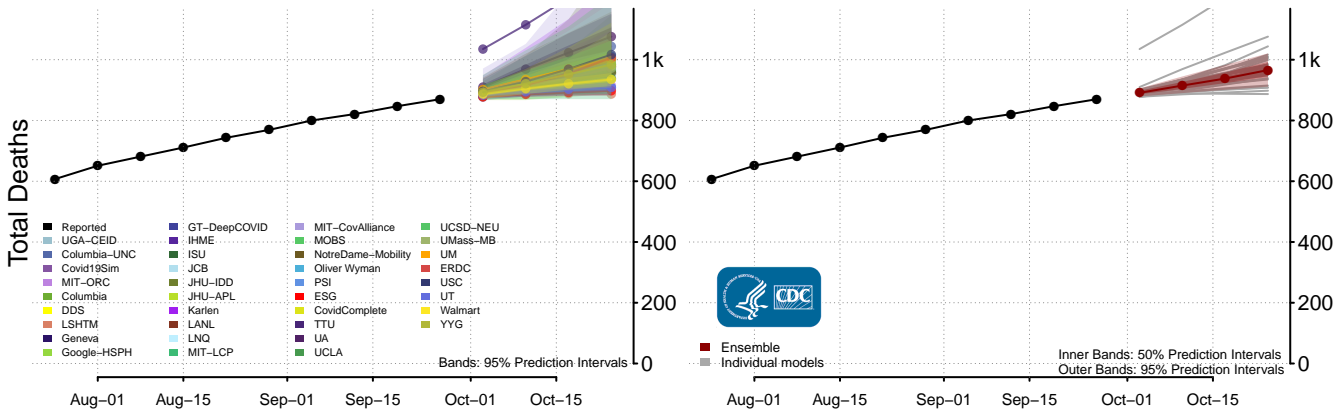
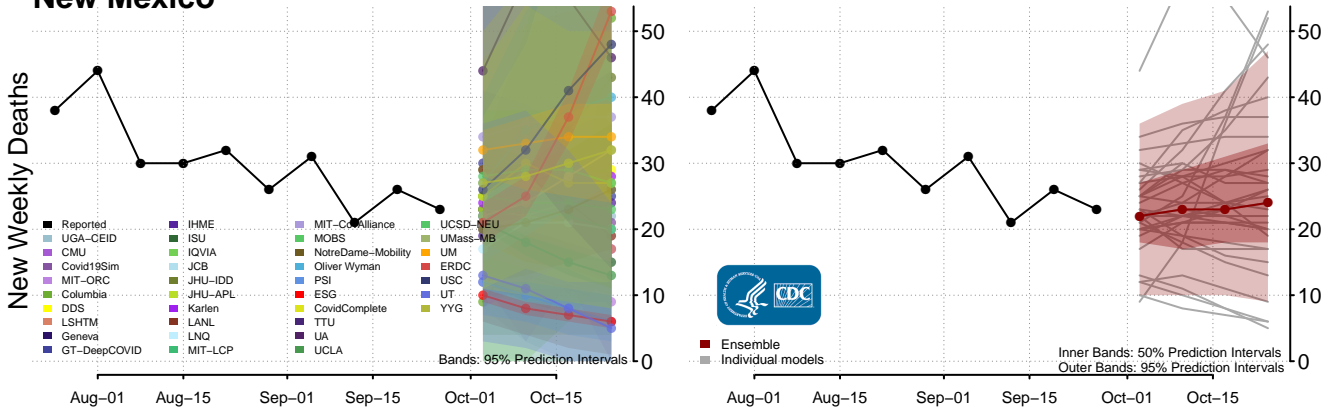
New Hampshire



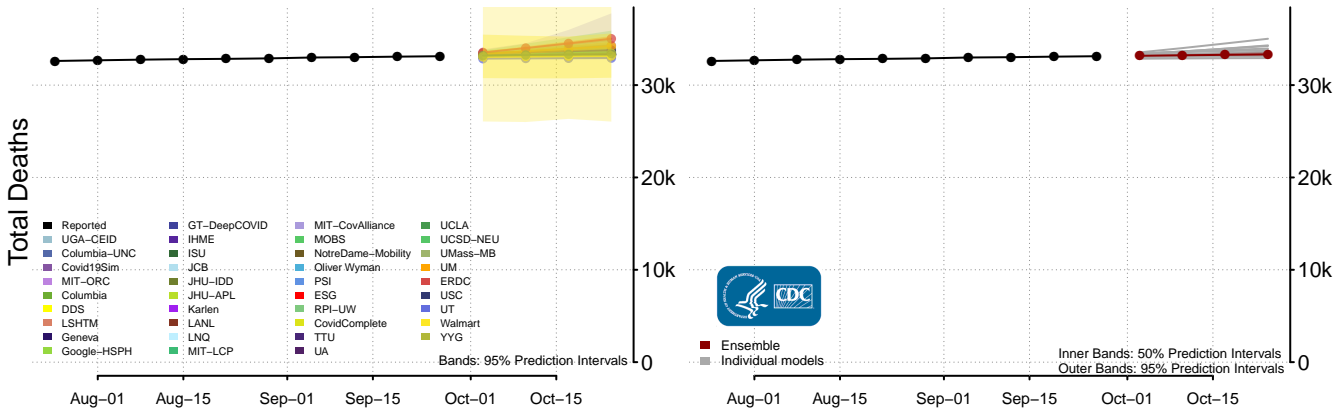
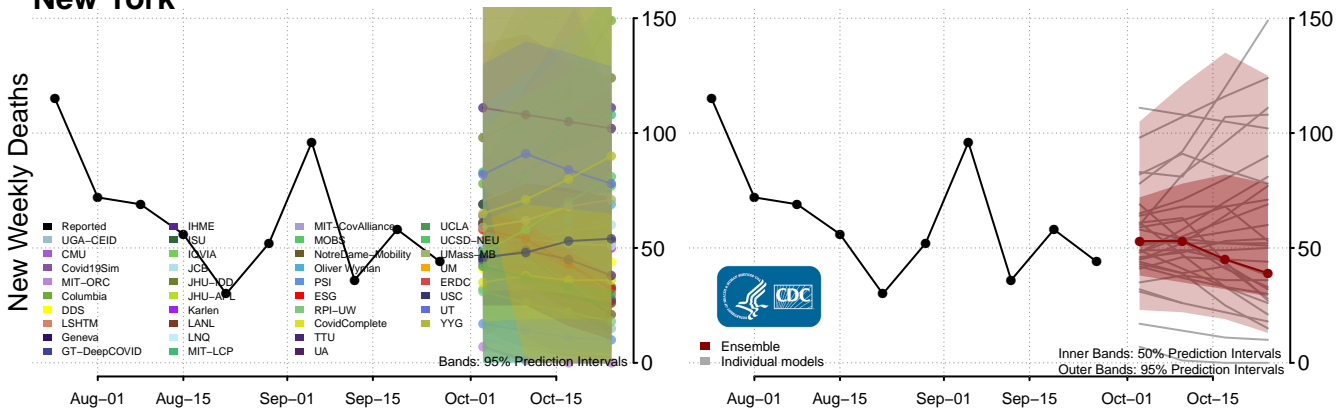
New Jersey



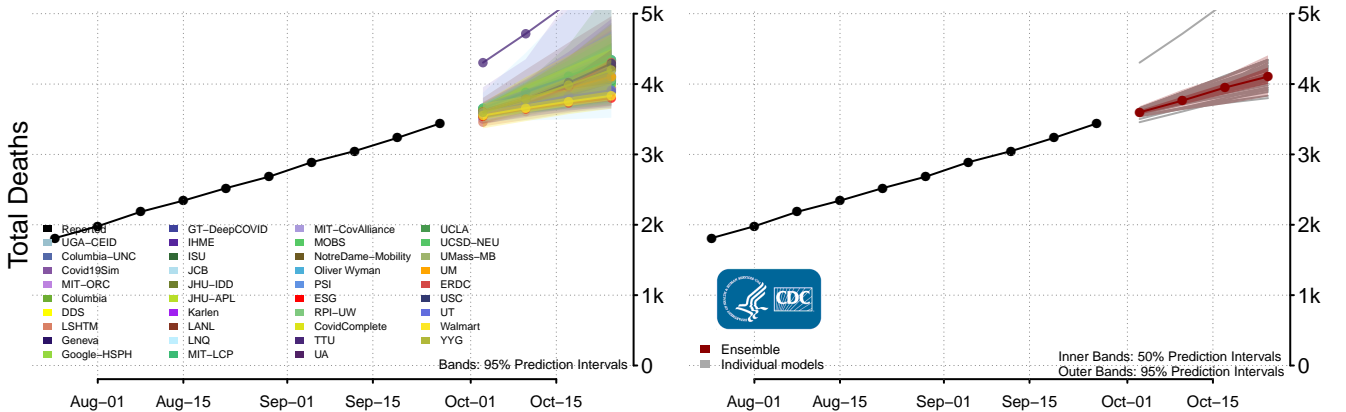
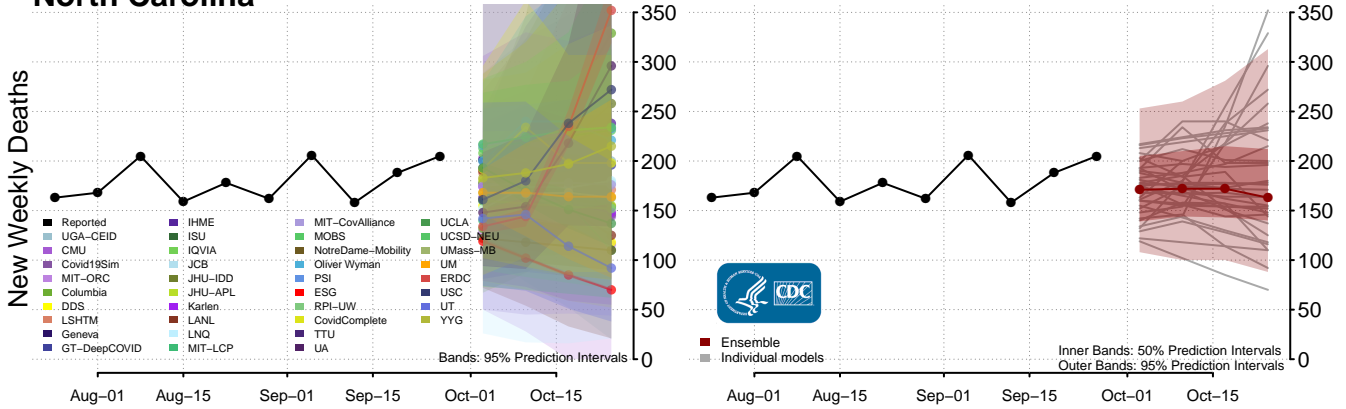
New Mexico



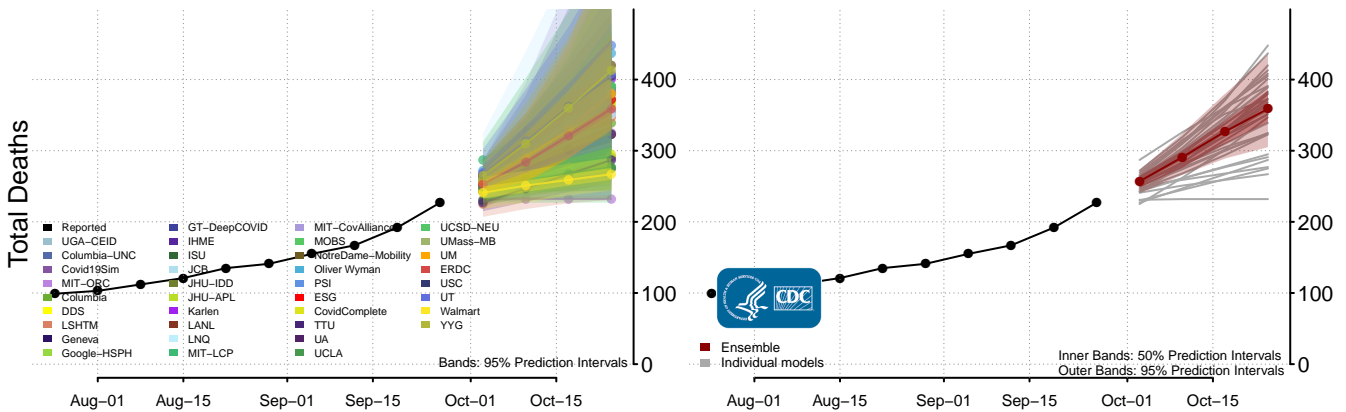
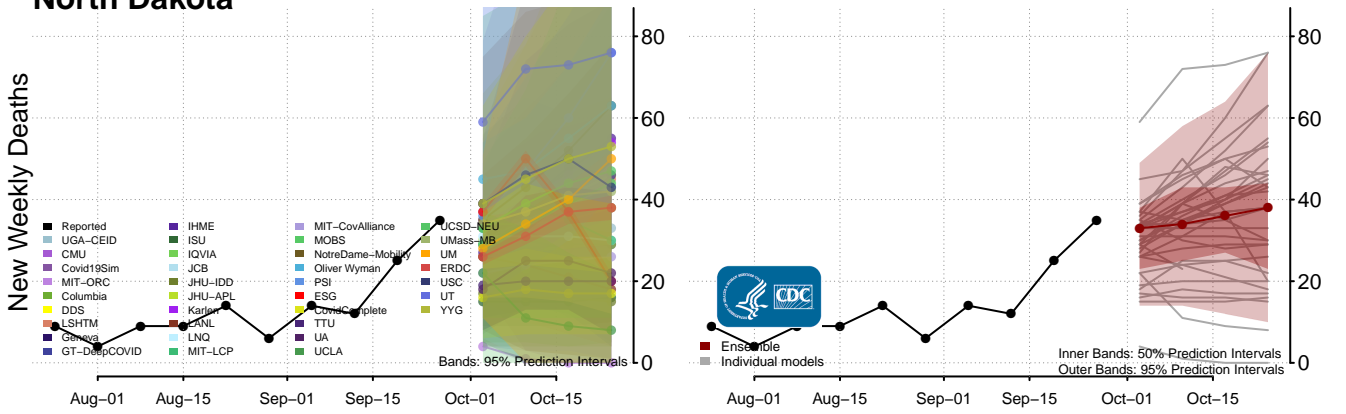
New York



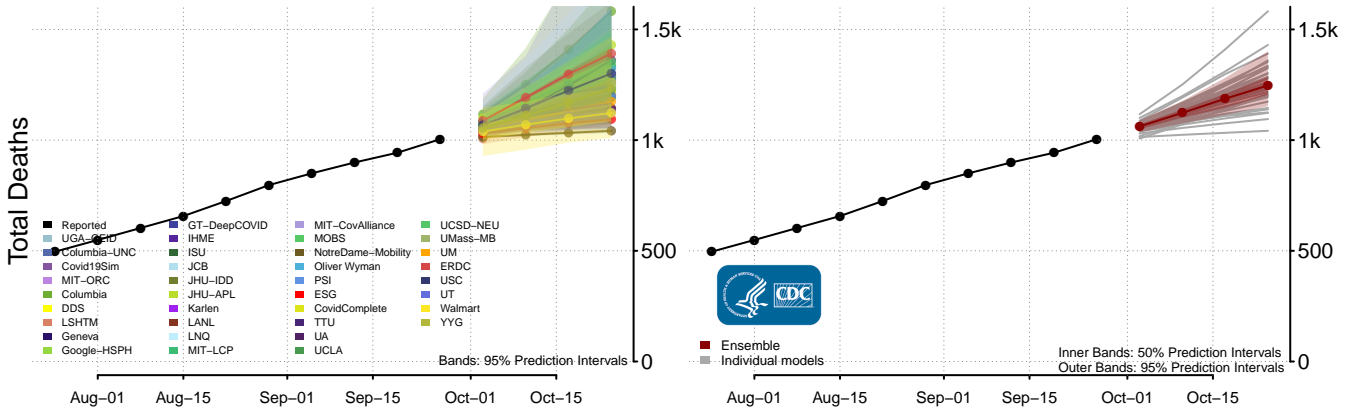
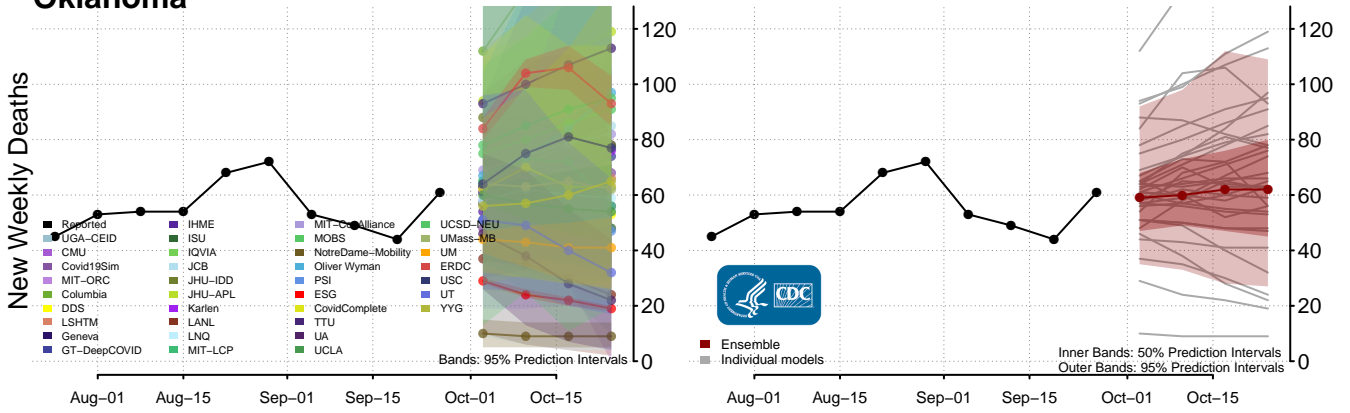
North Carolina



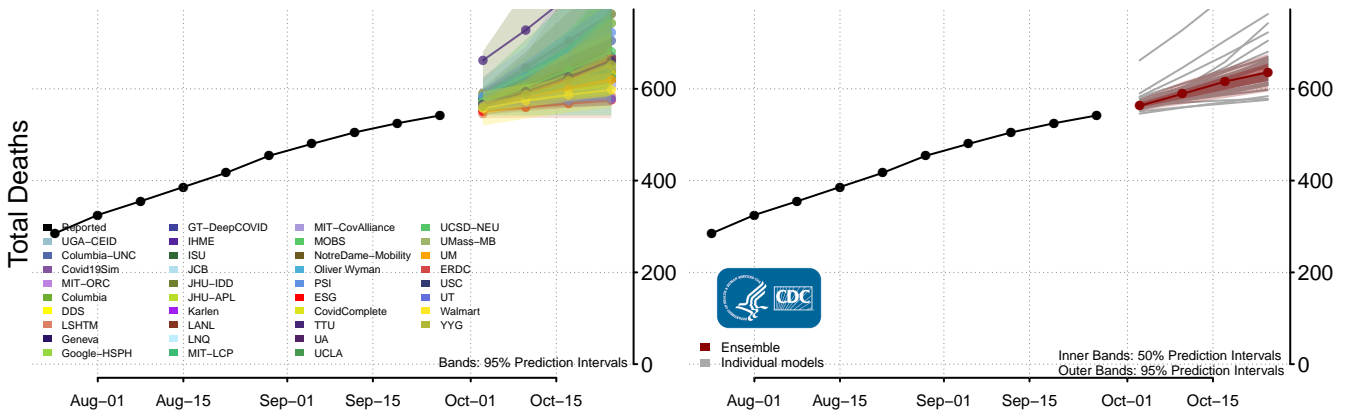
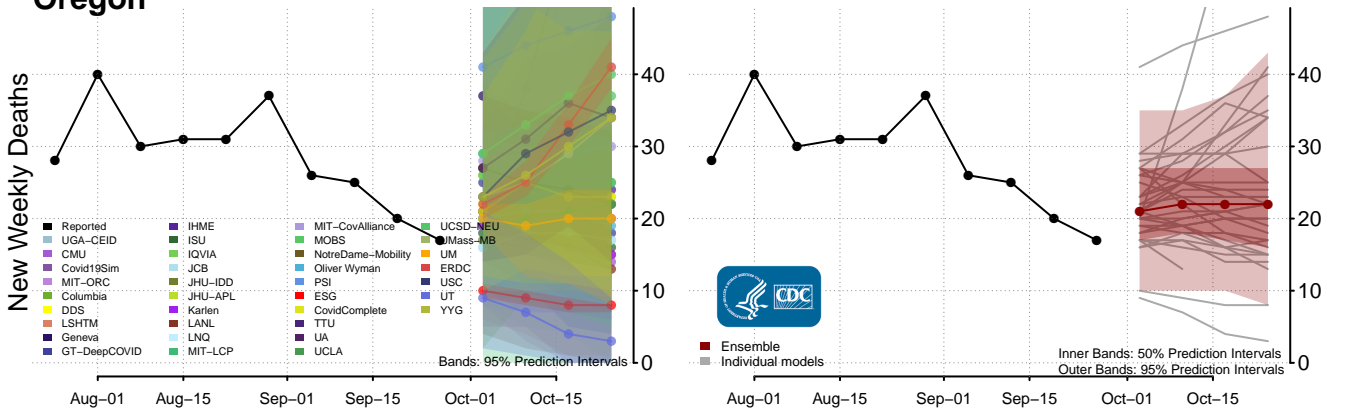
North Dakota



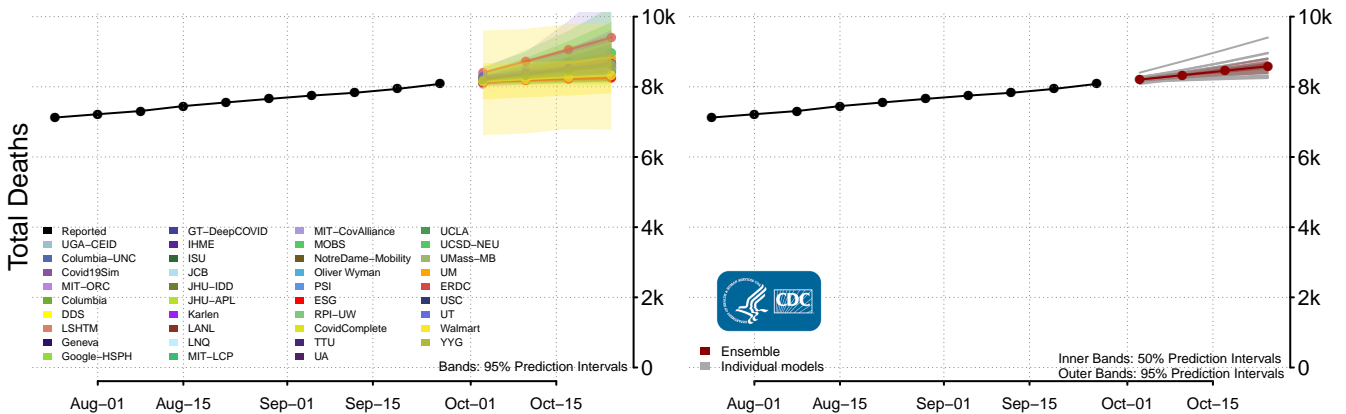
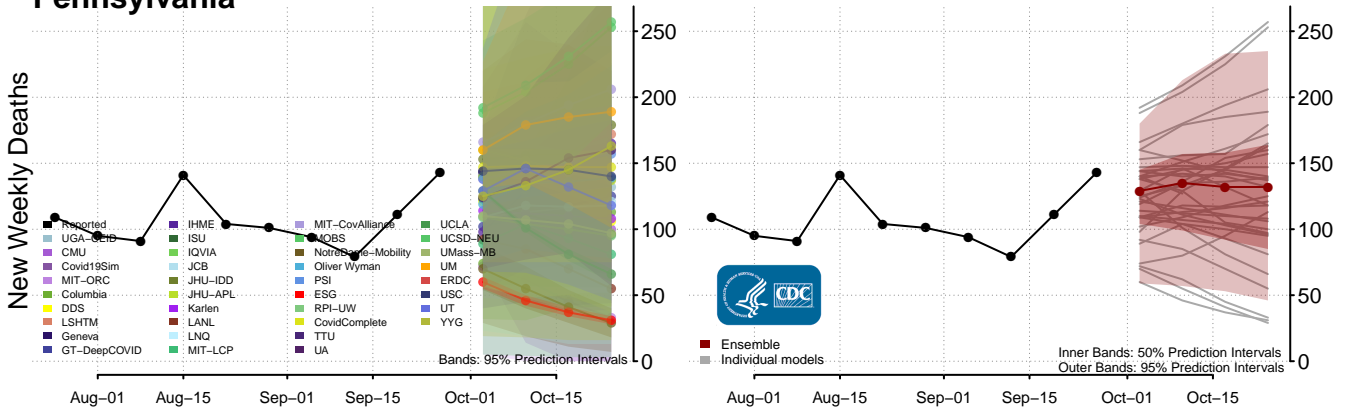
Oklahoma



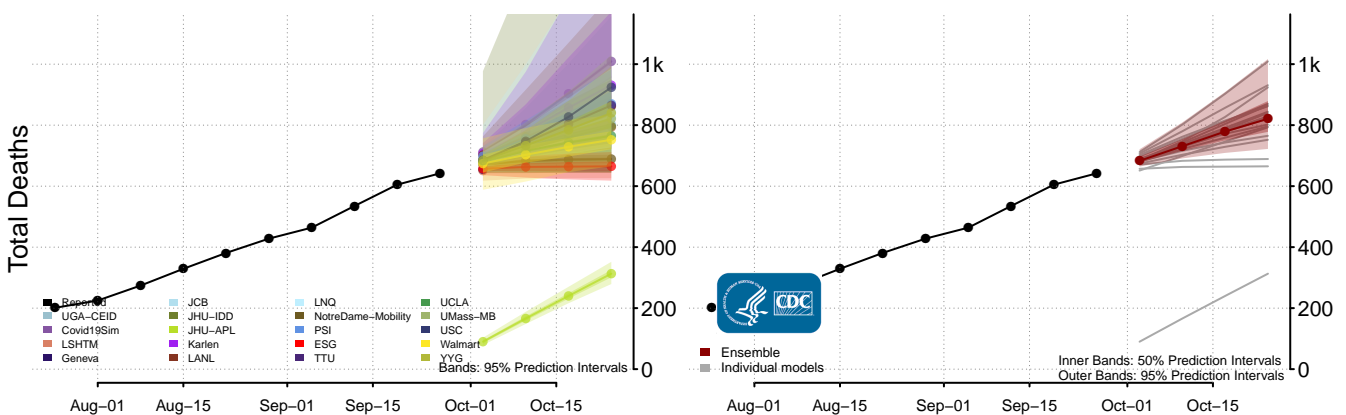
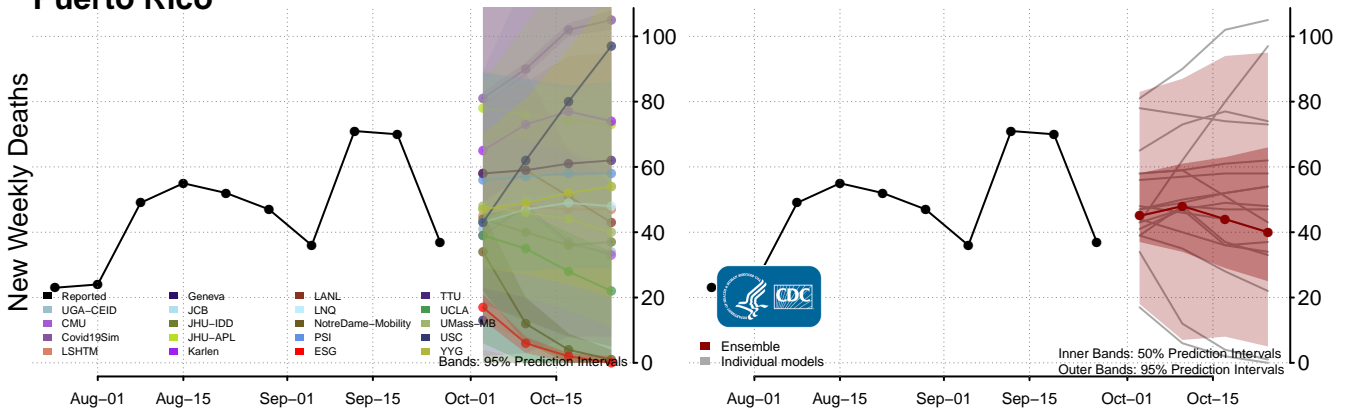
Oregon



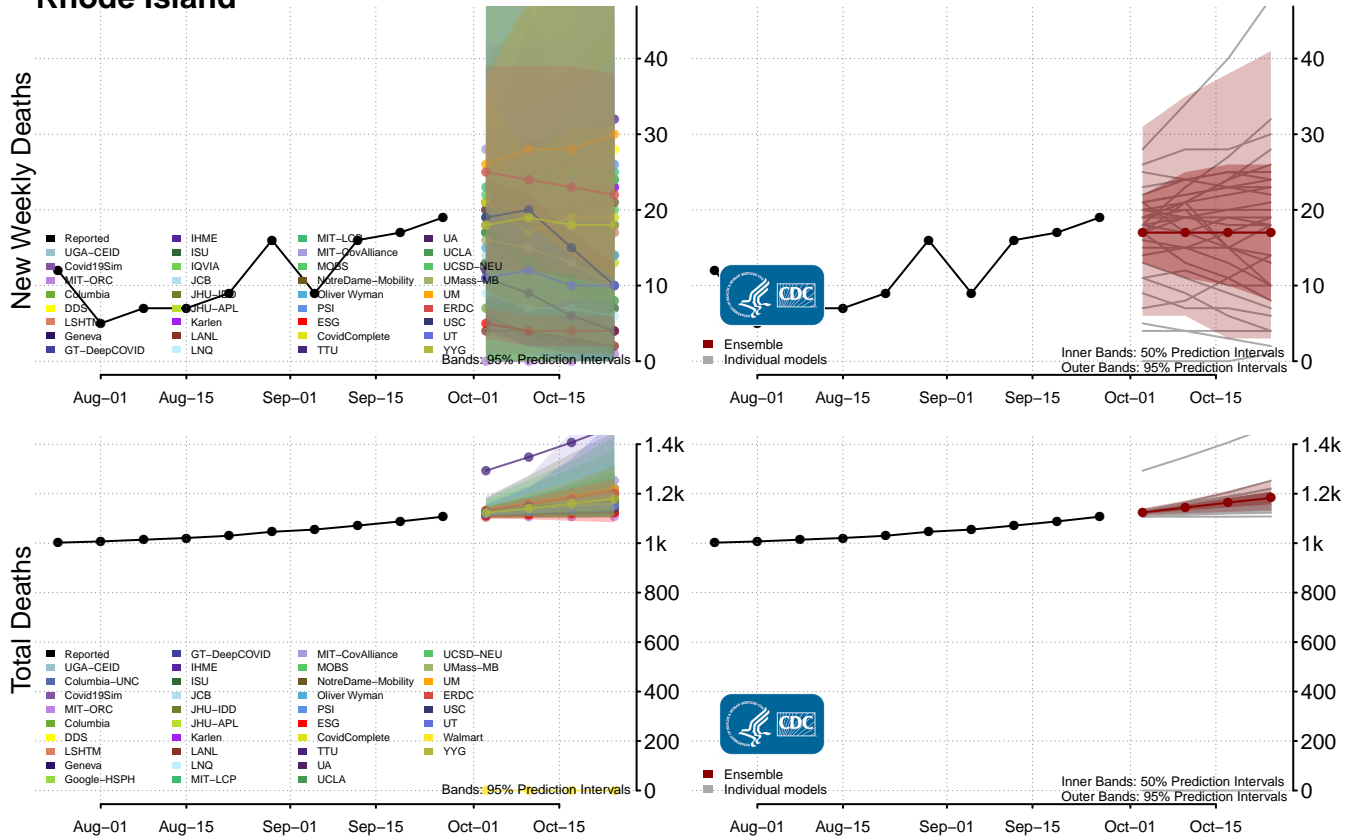
Pennsylvania



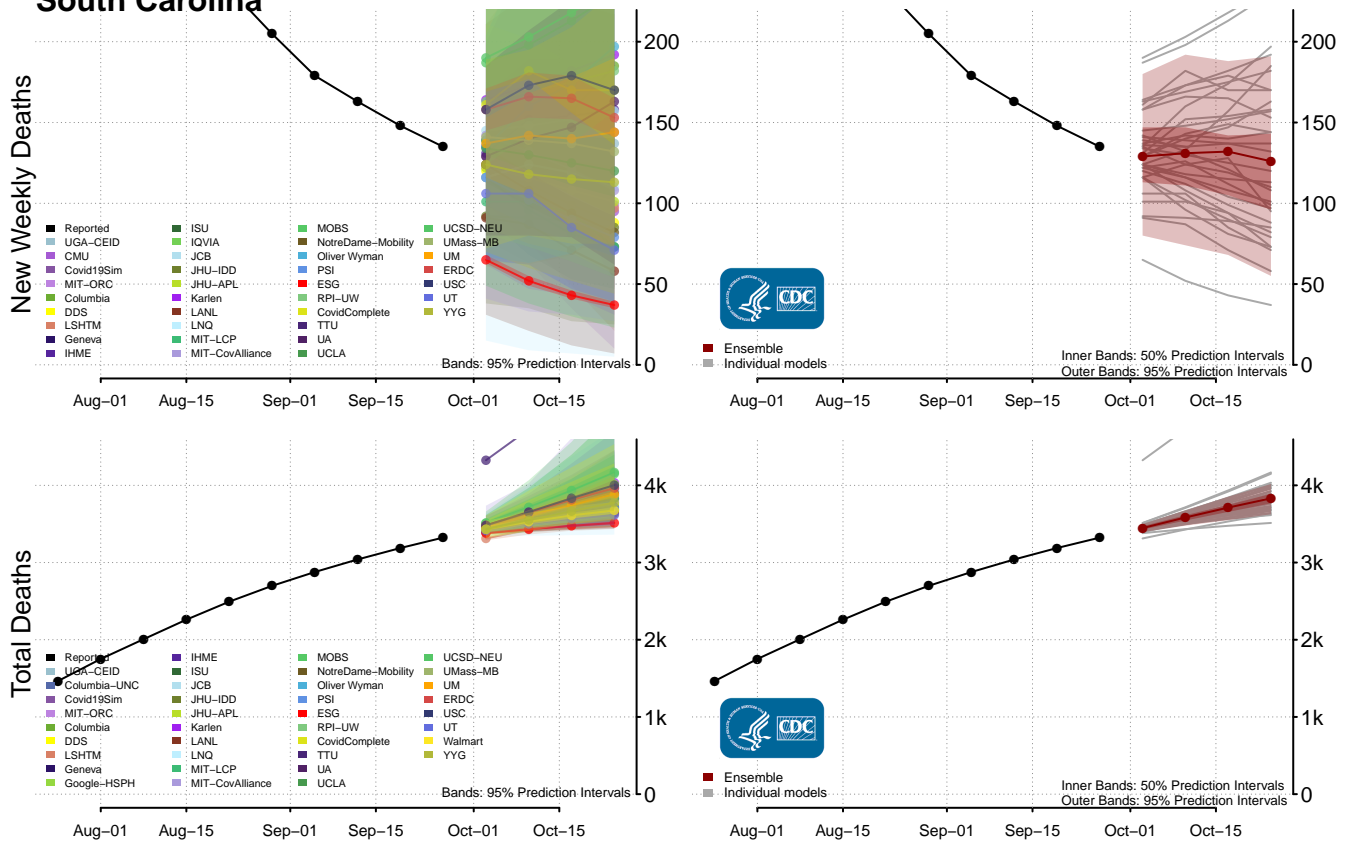
Puerto Rico



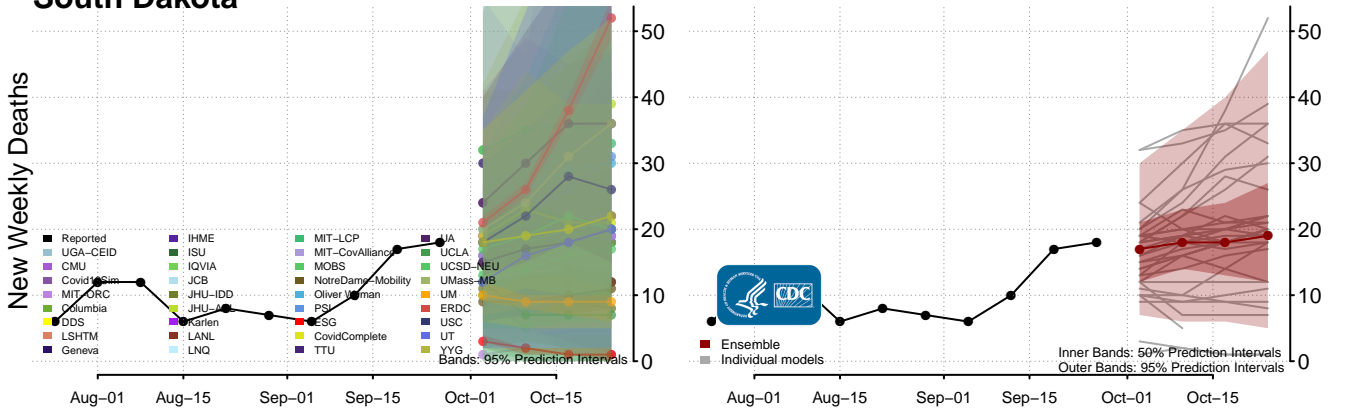
Rhode Island



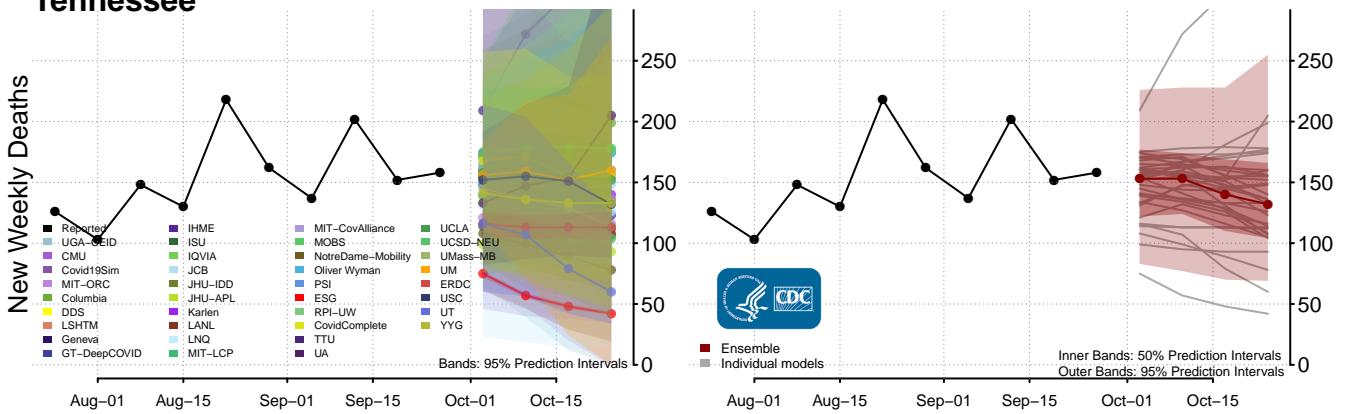
South Carolina



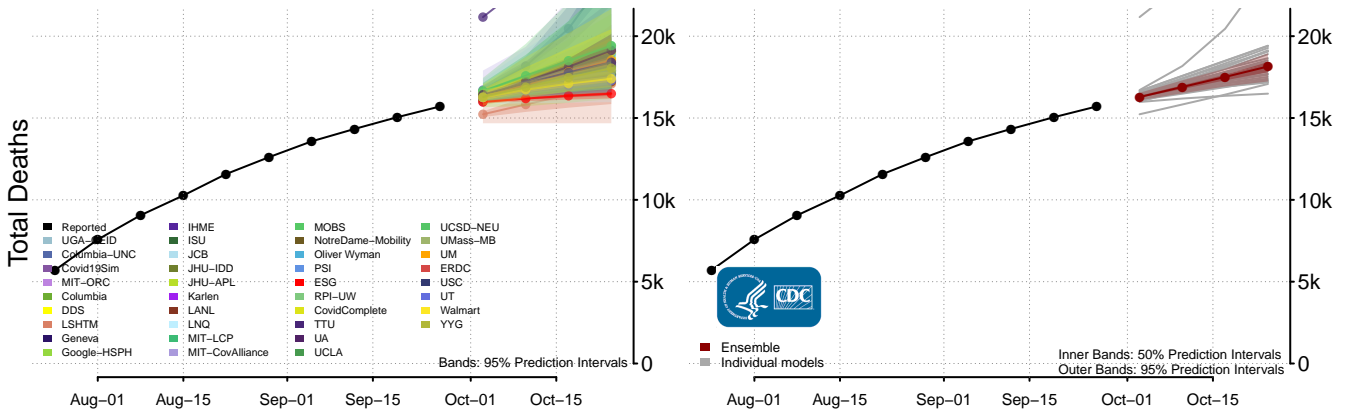
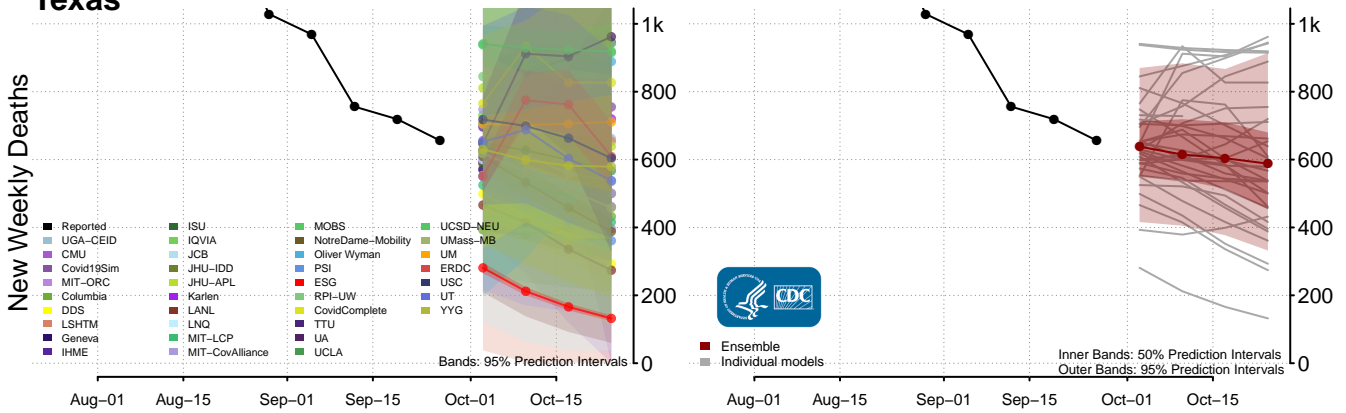
South Dakota



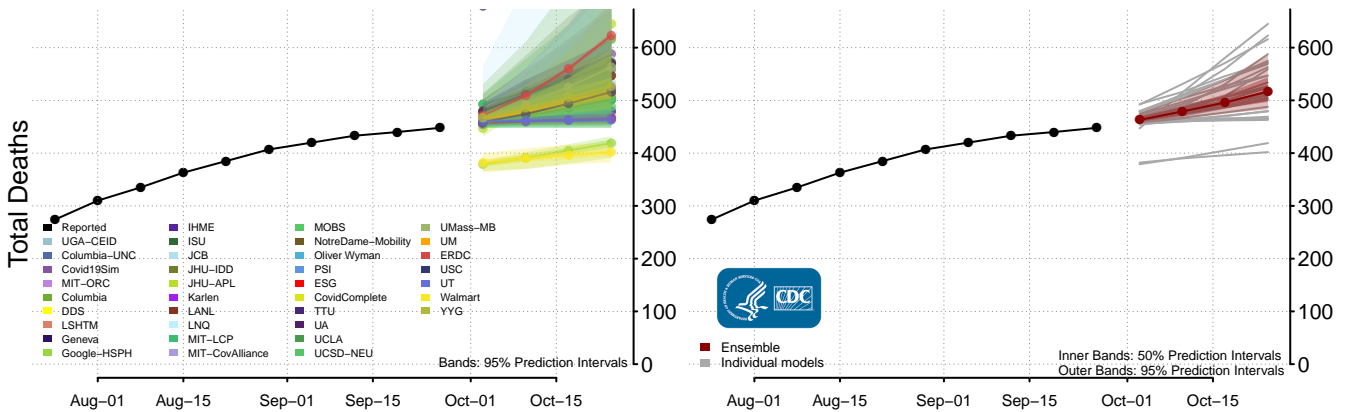
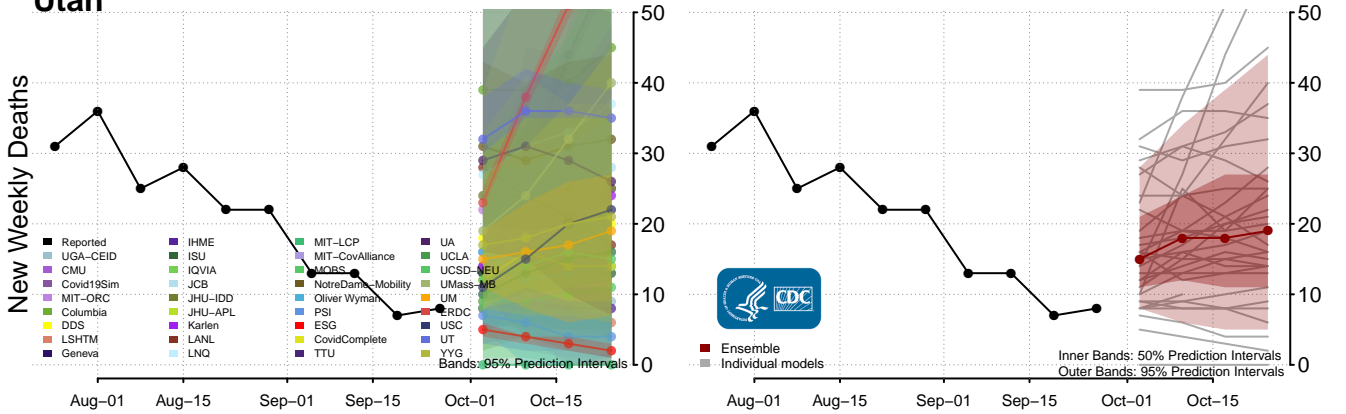
Tennessee



Texas



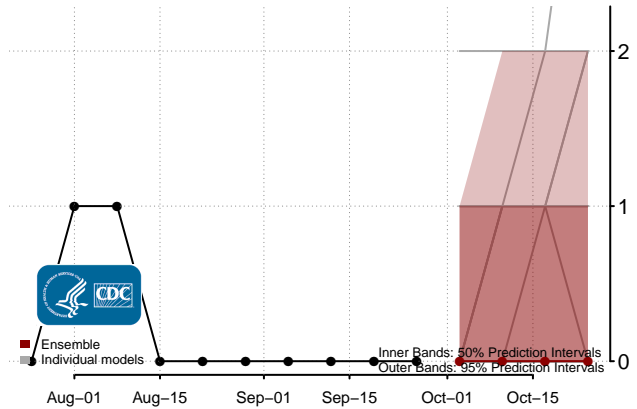
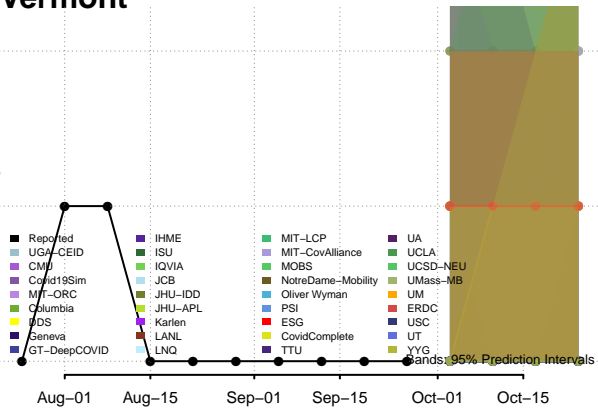
Utah**



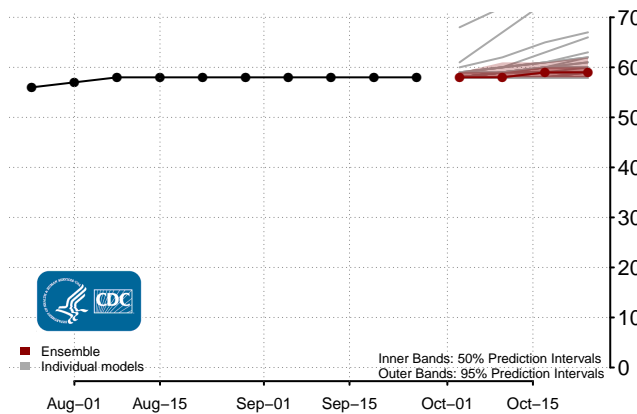
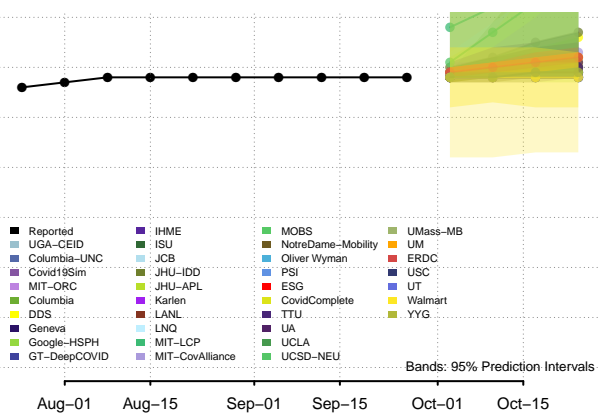
**New weekly deaths may increase in this location over the next four weeks. For these locations, the ensemble forecast indicates a probability of 0.75 or greater that more deaths will be reported in week four of the forecast than in the last reported week.

Vermont

New Weekly Deaths

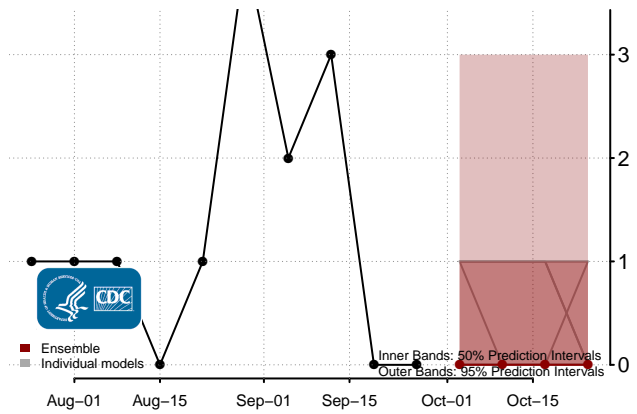
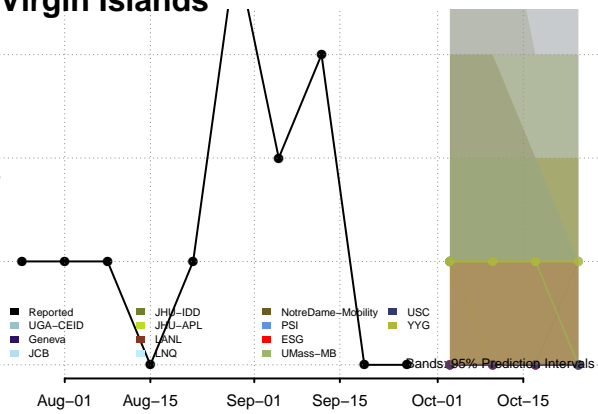


Total Deaths

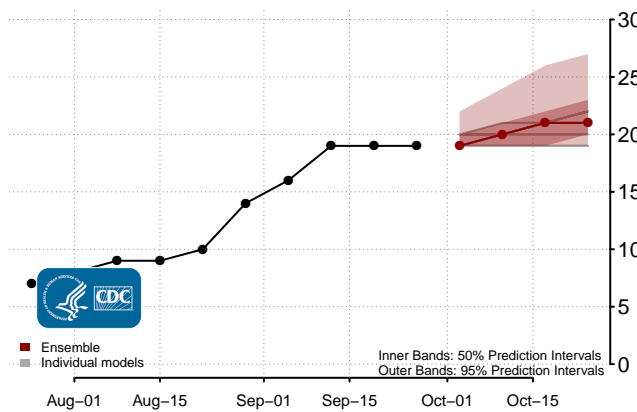
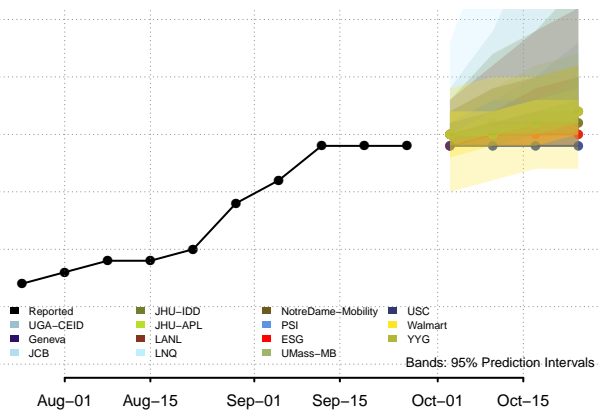


Virgin Islands

New Weekly Deaths

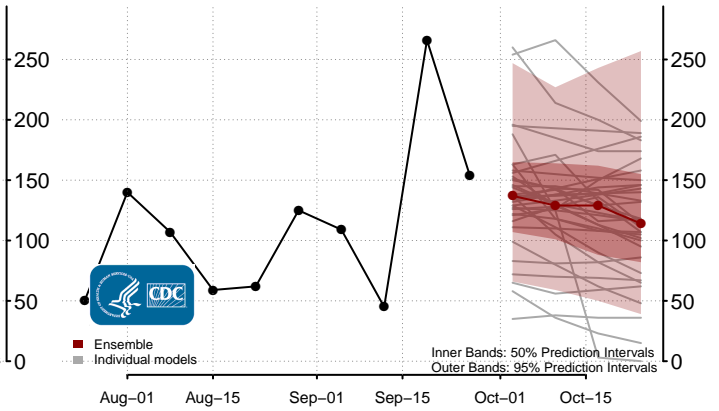
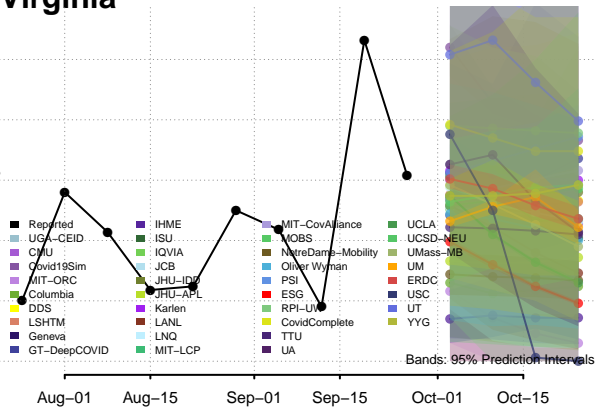


Total Deaths

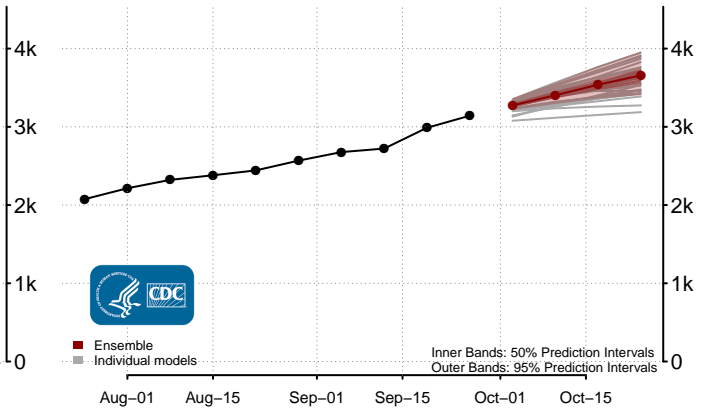
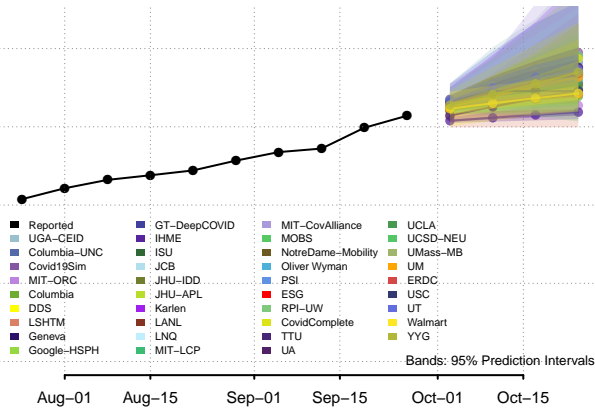


Virginia

New Weekly Deaths

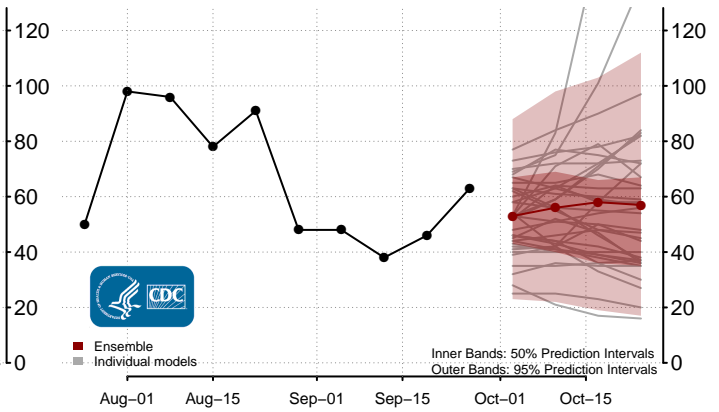
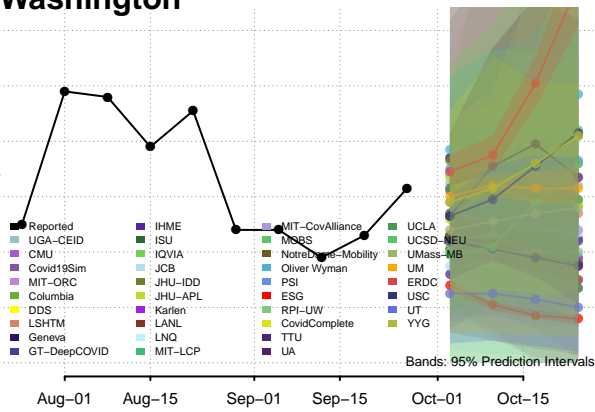


Total Deaths

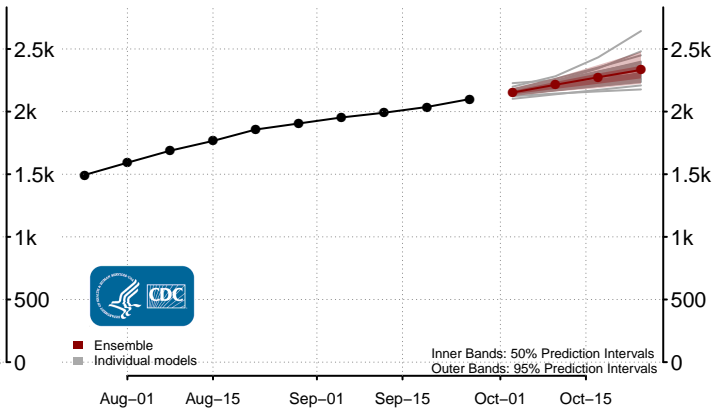
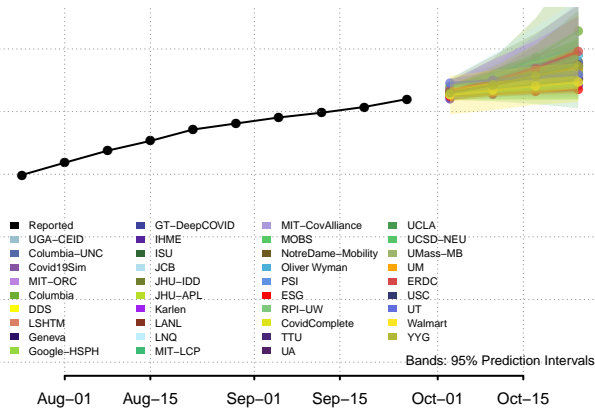


Washington

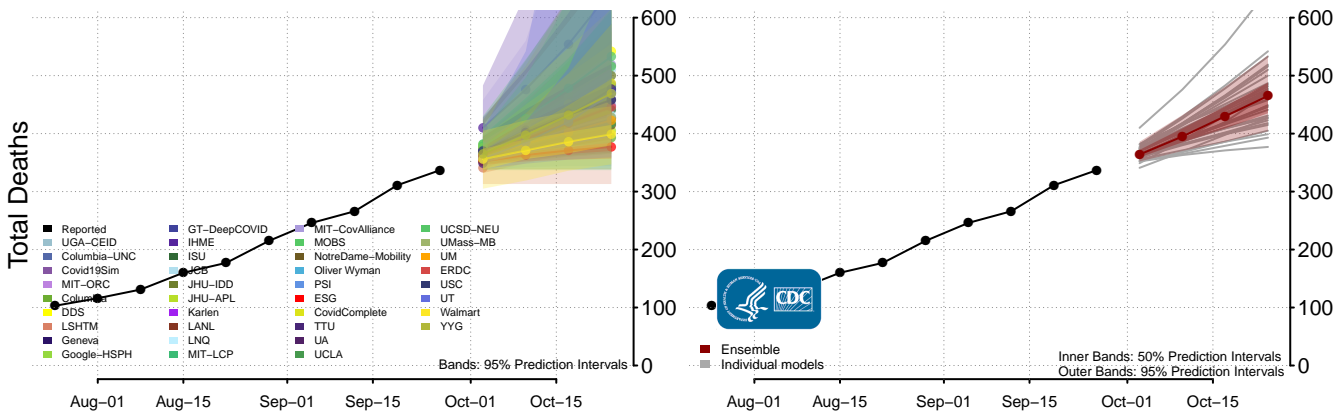
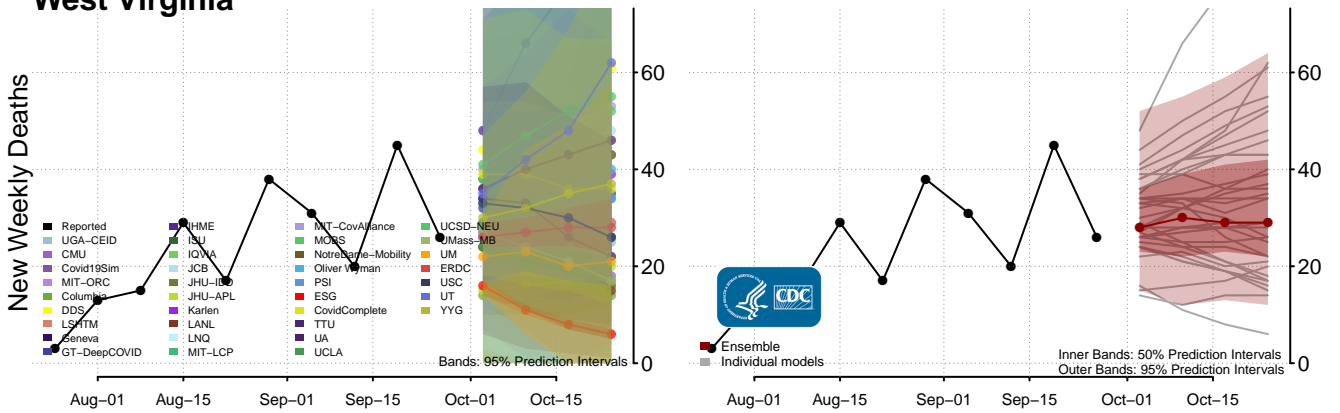
New Weekly Deaths



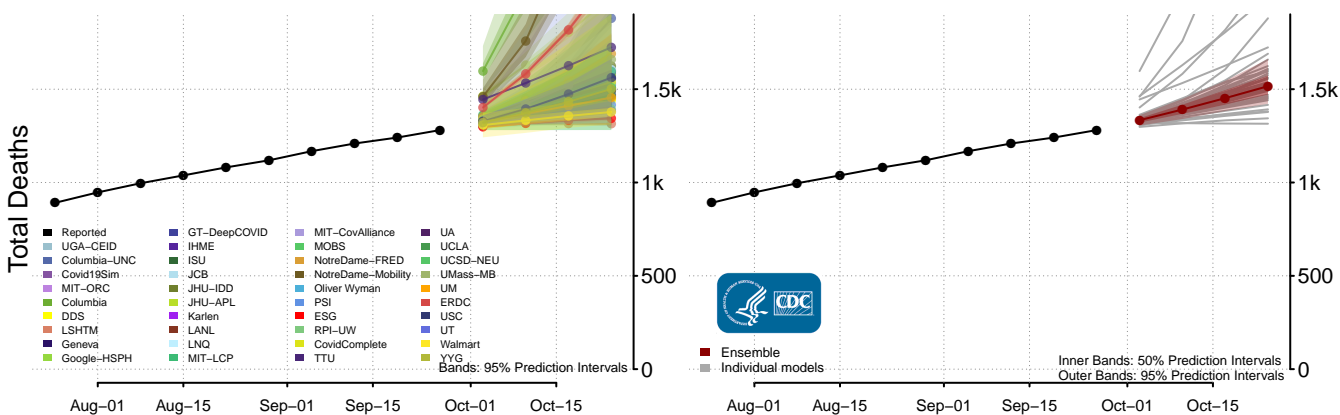
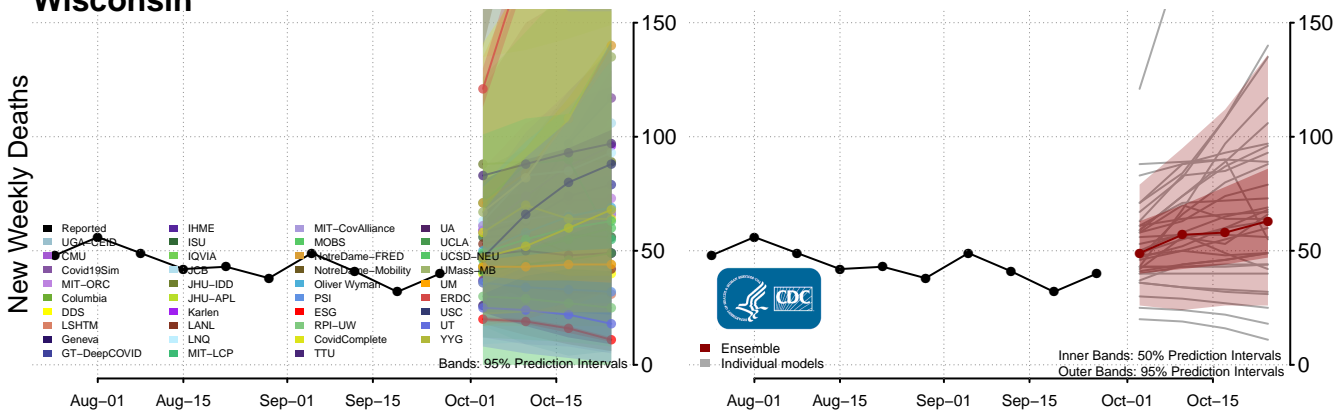
Total Deaths



West Virginia



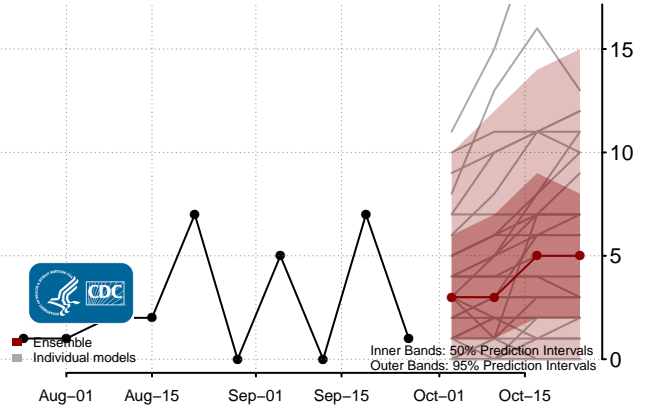
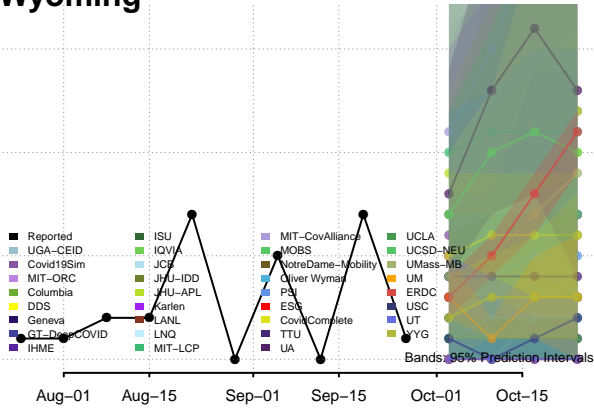
Wisconsin**



**New weekly deaths may increase in this location over the next four weeks. For these locations, the ensemble forecast indicates a probability of 0.75 or greater that more deaths will be reported in week four of the forecast than in the last reported week.

Wyoming

New Weekly Deaths



Total Deaths

