



Coronavirus Disease 2019 (COVID-19)

CDC COVID Data Tracker

Maps, charts, and data provided by the CDC



The CDC COVID-19 Data Tracker has a new look and location to make the data easier to find and use. All previous data remains and will be updated on the same schedule. Please update bookmarks and links.

Also, as of August 27, 2020 the Tracker includes correctional facility information, NIH Vulnerability Index data, and upgraded testing information.

Case Trends ▾

Laboratory ▾

Community Impact ▾

Unique Populations ▾

COVID-19 Home

Cases and Deaths by State

Trends

Compare Trends

Demographics

Cases and Deaths by County

Forecasting

Trends in ED Visits

Compare Trends in COVID-19 Cases and Deaths in States in the US Reported to CDC

USA

6,226,879

TOTAL CASES

CDC | Updated: Sep 6 2020 1:46PM

USA

188,051

TOTAL DEATHS

CDC | Updated: Sep 6 2020 1:46PM

USA

1,900

Cases per 100,000 People

CDC | Updated: Sep 6 2020 1:46PM

New confirmed cases of COVID-19

Day	CA	FL	GA	IL	NC	TX
1	16	18	18	13	17	52
2	18	25	22	20	21	66

CDC | Updated: Sep 6 2020 1:46PM

New confirmed cases of Covid-19, reported to CDC, in CA, FL, GA, IL, NC, and TX

Seven-day rolling average of new cases, by number of days since 10 average daily cases first recorded.

Select up to 6 States:

California x

Florida x

Georgia x

Illinois x

North Carolina x

Texas x

Show full US Data (only Logarithmic scale available*)

Cases

Deaths

Raw Totals

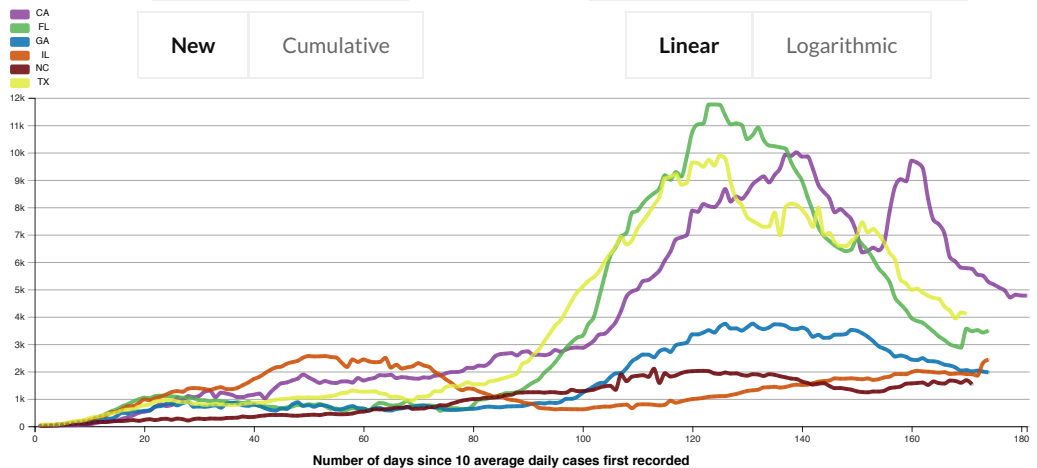
Rates per 100k

New

Cumulative

Linear

Logarithmic







Data Sources, References & Notes: Total cases are based on aggregate counts of COVID-19 cases sent by state and territorial jurisdictions to the Centers for Disease Control and Prevention (CDC) since January 21, 2020, with the exception of persons repatriated to the United States from Wuhan, China, and Japan. Case and death data are charted from date of first case/death rather than calendar date. The numbers are confirmed and probable COVID-19 cases as reported by U.S. states and U.S. territories. When not available to CDC, this is annotated by N/A.

Rates are calculated using U.S. Census Bureau, 2018 American Community Survey 1-year estimates and are shown as cases/100,000 people. The chart shows total cases per state, new cases in the last 7 days per state, and the rate (cases/100,000) per state. The 7-day moving average of new cases (current day + 6 preceding days / 7) was calculated to smooth expected variations in daily counts.

Case numbers reported on other websites may differ from what is posted on CDC's website because CDC's overall case numbers are validated through a confirmation process with each jurisdiction. Differences between reporting jurisdictions and CDC's website may occur due to the timing of reporting and website updates. The process used for finding and confirming cases displayed by other sites may differ.

[View and Download COVID-19 Case Surveillance Public Use Data](#)

HAVE QUESTIONS?

-  [Visit CDC-INFO](#)
-  [Call 800-232-4636](#)
-  [Email CDC-INFO](#)
-  [Open 24/7](#)

CDC INFORMATION

- [About CDC](#)
- [Jobs](#)
- [Funding](#)
- [Policies](#)
- [File Viewers & Players](#)

Privacy

- [FOIA](#)
- [No Fear Act](#)
- [OIG](#)
- [Nondiscrimination](#)
- [Accessibility](#)

CONNECT WITH CDC



[U.S. Department of Health & Human Services](#)

[USA.gov](#)

[CDC Website Exit Disclaimer](#)