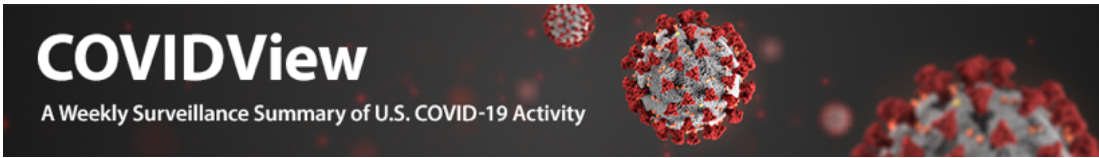


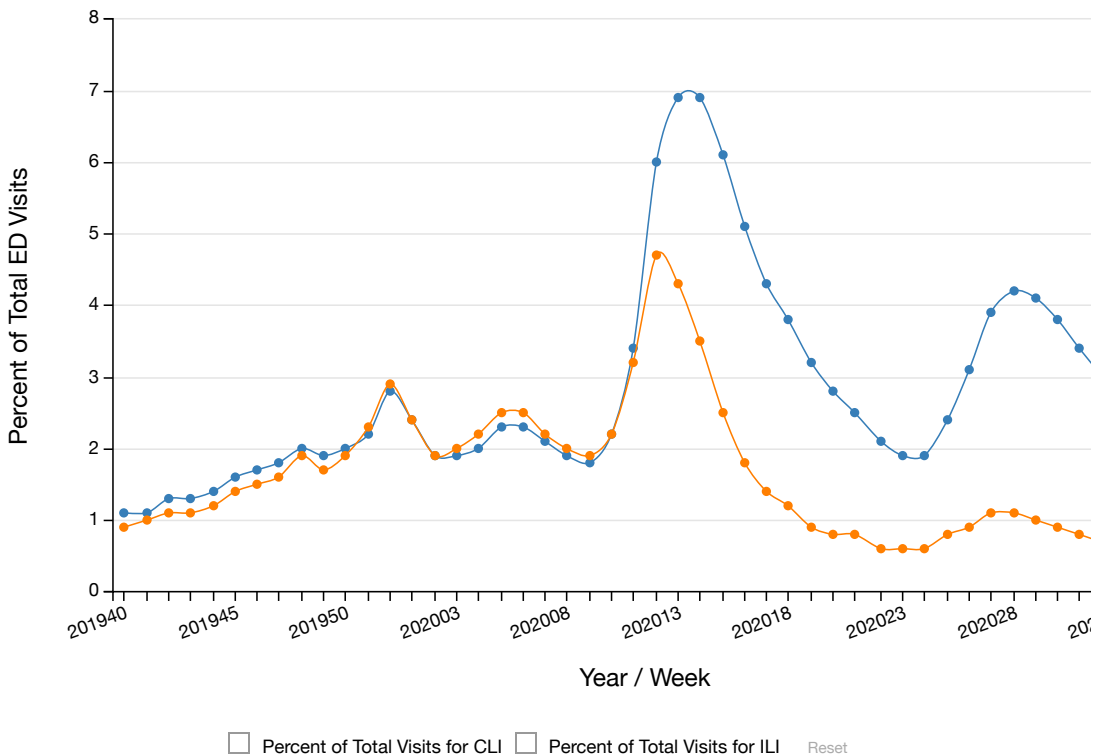
Coronavirus Disease 2019 (COVID-19)



Emergency Department Visits Percentage of Visits for COVID-19-Like Illness (CLI) or Influenza-like Illness (ILI)

Updated Sept. 4, 2020 [Print](#)

NSSP: Percentage of Visits for Influenza-Like Illness (ILI) and COVID-19-Like Illness (CLI) to Emergency Departments, Weekly National Summary, September 29, 2019 - August 29, 2020



Weekly National Summary, September 29, 2019 - August 29, 2020

Source: [View Data Table](#)

NSSP: Percentage of Visits for Influenza-Like Illness (ILI) and COVID-19-Like Illness + (CLI) to Emergency Departments

National Syndromic Surveillance Program (NSSP): Emergency
Department Visits
Percentage of Visits for COVID-19-Like Illness (CLI) or
Influenza-like Illness (ILI)
September 29, 2019 – August 29, 2020
Data as of September 3, 2020

National						
Week	Number of Facilities Reporting	Total Number of ED Visits	CLI Visits		ILI Visits	
			Number	Percent of Total Visits	Number	Percent of Total Visits
201940	3,371	2,150,826	23,062	1.1	19,688	0.9
201941	3,368	2,104,506	23,972	1.1	20,505	1.0
201942	3,372	2,095,003	26,305	1.3	22,527	1.1
201943	3,368	2,117,641	27,420	1.3	23,823	1.1
201944	3,389	2,074,724	29,144	1.4	25,469	1.2
201945	3,428	2,135,985	33,803	1.6	29,993	1.4
201946	3,435	2,132,299	36,305	1.7	32,662	1.5
201947	3,455	2,220,397	39,345	1.8	36,295	1.6
201948	3,454	2,108,973	43,135	2.0	39,991	1.9
201949	3,462	2,236,714	41,905	1.9	37,935	1.7
201950	3,463	2,250,853	44,143	2.0	42,753	1.9
201951	3,466	2,234,710	49,823	2.2	51,206	2.3

201952	3,466	2,343,492	64,609	2.8	69,038	2.9
202001	3,499	2,425,754	59,236	2.4	58,191	2.4
202002	3,504	2,313,052	43,834	1.9	43,178	1.9
202003	3,500	2,283,314	42,803	1.9	45,218	2.0
202004	3,526	2,280,934	46,511	2.0	50,235	2.2
202005	3,536	2,374,964	54,559	2.3	60,433	2.5
202006	3,543	2,363,322	53,735	2.3	59,813	2.5
202007	3,560	2,299,074	47,919	2.1	51,582	2.2
202008	3,558	2,284,664	44,504	1.9	46,622	2.0
202009	3,564	2,246,835	41,291	1.8	42,411	1.9
202010	3,577	2,277,519	50,042	2.2	50,598	2.2
202011	3,583	2,263,783	77,584	3.4	72,400	3.2
202012	3,580	1,818,516	108,899	6.0	85,502	4.7
202013	3,597	1,461,738	100,731	6.9	63,041	4.3
202014	3,596	1,272,326	88,283	6.9	44,319	3.5
202015	3,590	1,209,536	74,001	6.1	30,523	2.5
202016	3,591	1,188,056	60,312	5.1	21,691	1.8
202017	3,582	1,258,358	54,530	4.3	17,785	1.4
202018	3,587	1,314,647	50,225	3.8	15,179	1.2
202019	3,585	1,376,849	44,059	3.2	12,795	0.9
202020	3,588	1,426,802	40,503	2.8	11,973	0.8
202021	3,607	1,529,281	37,742	2.5	11,504	0.8
202022	3,631	1,622,361	34,032	2.1	10,198	0.6
202023	3,636	1,671,621	31,539	1.9	9,956	0.6

202024	3,635	1,746,767	33,943	1.9	10,706	0.6
202025	3,640	1,791,228	43,038	2.4	13,627	0.8
202026	3,652	1,885,407	59,372	3.1	17,663	0.9
202027	3,655	1,890,747	73,976	3.9	19,956	1.1
202028	3,649	1,986,156	84,284	4.2	21,461	1.1
202029	3,650	1,944,752	80,679	4.1	20,003	1.0
202030	3,647	1,907,248	71,594	3.8	16,884	0.9
202031	3,645	1,894,318	64,226	3.4	15,579	0.8
202032	3,649	1,875,805	57,067	3.0	14,024	0.7
202033	3,645	1,905,636	49,899	2.6	13,289	0.7
202034	3,643	1,888,069	43,727	2.3	12,897	0.7
202035	3,645	1,885,122	37,738	2.0	12,570	0.7
Total		93,370,684	2,469,388		1,555,691	

[Download Raw Data](#)  [17 KB]

Last Updated Sept. 4, 2020

Content source: [National Center for Immunization and Respiratory Diseases \(NCIRD\), Division of Viral Diseases](#)