

CDC COVID Data Tracker



Explore and understand coronavirus disease (COVID-19)

Maps, charts, and data provided by the Centers for Disease Control and Prevention

Case Trends ▼

Testing

Serology Surveillance

Trends in ED Visits

Mobility

Underlying Medical Conditions

Societal Impact ▼

Learn More

Case Trends > Trends

Trends in Number of COVID-19 Cases in the US Reported to CDC, by State/Territory

USA

5,422,242

TOTAL CASES

CDC | Updated: Aug 18 2020 12:15PM

USA

169,870

TOTAL DEATHS

CDC | Updated: Aug 18 2020 12:15PM

USA

1,654

Cases per 100,000 People

CDC | Updated: Aug 18 2020 12:15PM

Case Daily Trends - United States



Date	New Cases	7-Day Moving Avg
Aug 17 2020	40117	51153

CDC | Updated: Aug 18 2020 12:15PM



Daily Trends

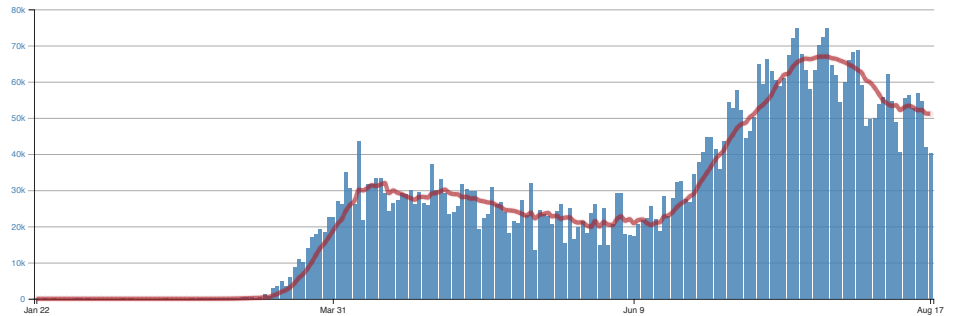
Total and Rate

Daily Trends in Number of COVID-19 Cases in the United States Reported to CDC

United States

☒ Cases ☐ Deaths

7-Day moving average



Data Sources, References & Notes: Total cases are based on aggregate counts of COVID-19 cases reported by state and territorial jurisdictions to the Centers for Disease Control and Prevention (CDC) since January 21, 2020, with the exception of persons repatriated to the United States from Wuhan, China, and Japan. The numbers are confirmed and probable COVID-19 cases as reported by U.S. states, U.S. territories, New York City, and the District of Columbia from the previous day. *Counts for New York City and New York state are shown separately; data for New York State show total cases and deaths for the State excluding data for NYC. When not available to CDC this is annotated by N/A. Rates are calculated using U.S. Census Bureau, 2018 American Community Survey 1-year estimates and are shown as cases/100,000 people. The map shows total cases per state, new cases in the last 7 days per state, and the rate (cases/100,000) per state. The 7-day moving average of new cases (current day + 6 preceding days / 7) was calculated to smooth expected variations in daily counts. Demographic data for deaths is based on a subset of cases where case-level data is available. Case numbers reported on other websites may differ from what is posted on CDC's website because CDC's overall case numbers are validated through a confirmation process with each jurisdiction. Differences between reporting jurisdictions and CDC's website may occur due to the

timing of reporting and website updates. The process used for finding and confirming cases displayed by other sites may differ.

HAVE QUESTIONS?  Visit CDC-INFO  Call 800-232-4636  Email CDC-INFO

[View and Download COVID-19 Case Surveillance Public Use Data](#)