



Coronavirus Disease 2019 (COVID-19)

Cases in the U.S.

Updated June 30, 2020

[Print Page](#)

TOTAL CASES

2,581,229

35,664 New Cases*

TOTAL DEATHS

126,739

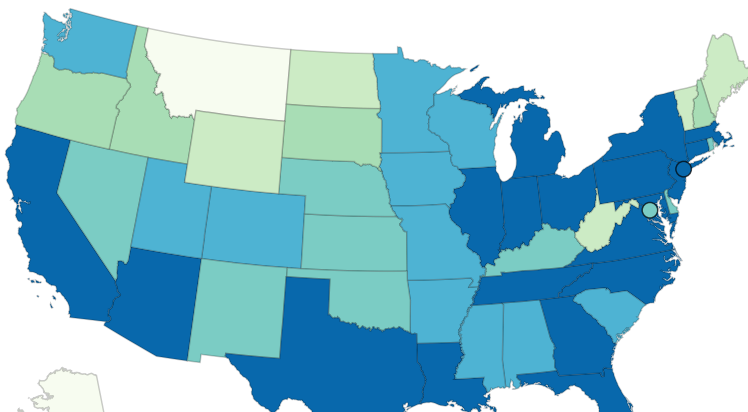
370 New Deaths*



Cases & Deaths by Jurisdiction

40 jurisdictions report more than 10,000 cases of COVID-19.

This map shows COVID-19 cases and deaths reported by U.S. states, the District of Columbia, New York City, and other U.S.-affiliated jurisdictions. Hover over the map to see the number of cases and deaths reported in each jurisdiction. To go to a jurisdiction's health department website, click on the jurisdiction on the map.



Reported Cases

- 0 to 1,000
- 1,001 to 5,000
- 5,001 to 10,000
- 10,001 to 20,000
- 20,001 to 40,000
- 40,001 or more



AS GU MH FM MP PW PR VI




Jurisdictions						
Jurisdiction	Total Cases	Confirmed Cases	Probable Cases	Total Deaths	Confirmed Dea	Probable Deaths
<input type="radio"/> Alabama	37,203	36,709	494	931	910	21
<input type="radio"/> Alaska	904	N/A	N/A	14	N/A	N/A
<input type="radio"/> American Samoa	0	N/A	N/A	0	N/A	N/A
<input type="radio"/> Arizona	74,533	74,119	414	1,588	1,488	100
<input type="radio"/> Arkansas	20,257	N/A	N/A	265	N/A	N/A
<input type="radio"/> California	216,550	N/A	N/A	5,936	N/A	N/A
<input type="radio"/> Colorado	32,511	29,651	2,860	1,682	1,350	332
<input type="radio"/> Connecticut	46,362	44,384	1,978	4,320	3,451	869
<input type="radio"/> Delaware	11,376	10,306	1,070	507	449	58
<input type="radio"/> Washington D.C.	10,292	N/A	N/A	551	N/A	N/A
<input type="radio"/> Florida	143,805	N/A	N/A	3,447	N/A	N/A
<input type="radio"/> Georgia	79,417	N/A	N/A	2,784	N/A	N/A
<input type="radio"/> Guam	257	N/A	N/A	5	N/A	N/A
<input type="radio"/> Hawaii	829	N/A	N/A	18	N/A	N/A
<input type="radio"/> Idaho	5,752	5,212	540	91	71	20
<input type="radio"/> Illinois	143,514	142,461	1,053	7,103	6,902	201
<input type="radio"/> Indiana	45,228	N/A	N/A	2,624	2,432	192
<input type="radio"/> Iowa	28,782	N/A	N/A	708	N/A	N/A
<input type="radio"/> Kansas	14,443	14,066	377	270	N/A	N/A
<input type="radio"/> Kentucky	15,347	14,835	512	560	557	3
<input type="radio"/> Louisiana	57,081	N/A	N/A	3,199	3,091	108
<input type="radio"/> Maine	3,252	2,892	360	105	N/A	N/A
<input type="radio"/> Marshall Islands	0	N/A	N/A	0	N/A	N/A
<input type="radio"/> Maryland	67,559	N/A	N/A	3,190	3,062	128
<input type="radio"/> Massachusetts	108,768	103,628	5,140	8,095	7,895	200
<input type="radio"/> Michigan	70,223	63,497	6,726	6,161	5,915	246
<input type="radio"/> Micronesia	0	N/A	N/A	0	N/A	N/A
<input type="radio"/> Minnesota	35,861	N/A	N/A	1,470	1,435	35
<input type="radio"/> Mississippi	27,247	27,067	180	1,073	1,056	17
<input type="radio"/> Missouri	21,043	N/A	N/A	998	N/A	N/A
<input type="radio"/> Montana	967	967	0	22	22	0
<input type="radio"/> Nebraska	19,042	N/A	N/A	269	N/A	N/A
<input type="radio"/> Nevada	18,131	N/A	N/A	536	N/A	N/A

<input type="radio"/> New Hampshire	5,760	N/A	N/A	367	N/A	N/A
<input type="radio"/> New Jersey	171,272	N/A	N/A	14,992	13,138	1,854
<input type="radio"/> New Mexico	11,982	N/A	N/A	493	N/A	N/A
<input type="radio"/> New York	177,991	N/A	N/A	8,673	N/A	N/A
<input type="radio"/> New York City	216,676	212,072	4,604	23,096	18,492	4,604
<input type="radio"/> North Carolina	63,484	N/A	N/A	1,325	N/A	N/A
<input type="radio"/> North Dakota	3,539	N/A	N/A	79	N/A	N/A
<input type="radio"/> Northern Marian	30	30	0	2	2	0
<input type="radio"/> Ohio	51,046	47,524	3,522	2,818	2,575	243
<input type="radio"/> Oklahoma	12,977	12,950	27	401	401	0
<input type="radio"/> Oregon	8,485	8,121	364	204	201	3
<input type="radio"/> Palau	0	N/A	N/A	0	N/A	N/A
<input type="radio"/> Pennsylvania	86,606	84,130	2,476	6,649	N/A	N/A
<input type="radio"/> Puerto Rico	7,465	1,693	5,772	153	59	94
<input type="radio"/> Rhode Island	16,764	N/A	N/A	946	N/A	N/A
<input type="radio"/> South Carolina	34,644	34,546	98	720	717	3
<input type="radio"/> South Dakota	6,716	N/A	N/A	91	90	1
<input type="radio"/> Tennessee	42,297	41,949	348	592	568	24
<input type="radio"/> Texas	153,011	N/A	N/A	2,403	N/A	N/A
<input type="radio"/> Utah	22,263	22,060	203	171	171	0
<input type="radio"/> Vermont	1,208	N/A	N/A	56	N/A	N/A
<input type="radio"/> Virgin Islands	84	N/A	N/A	6	N/A	N/A
<input type="radio"/> Virginia	62,787	60,124	2,663	1,763	1,658	105
<input type="radio"/> Washington	32,253	N/A	N/A	1,320	N/A	N/A
<input type="radio"/> West Virginia	2,870	2,771	99	93	N/A	N/A
<input type="radio"/> Wisconsin	31,033	28,058	2,975	784	777	7
<input type="radio"/> Wyoming	1,450	1,151	299	20	20	0

New York State's case and death counts do not include New York City's counts.

Not all jurisdictions report confirmed and probable cases and deaths to CDC. When not available to CDC, it is noted as N/A.

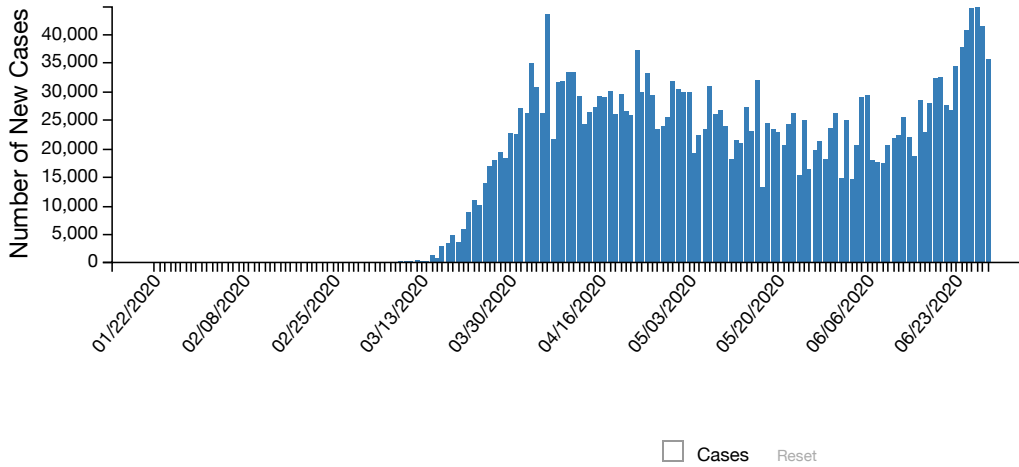
Cases & Deaths by County

Select a state to view the number of cases and deaths by county. This data is courtesy of USAFacts.org 

[View County Data](#)

New Cases by Day

The following chart shows the number of new COVID-19 cases reported each day in the U.S. since the beginning of the outbreak. Hover over the bars to see the number of new cases by day.



[View Data](#) -

	01/22/2020	01/23/2020	01/24/2020	01/25/2020	01/26/2020	01/27/2020	01/28/2020	01/29/2020	01/30/2020	01
Cases	1	0	1	0	3	0	0	0	0	

Scroll for additional info

Cases & Deaths among Healthcare Personnel

Data were collected from 2,179,289 people, but healthcare personnel status was only available for 469,644 (21.6%) people. For the 88,082 cases of COVID-19 among healthcare personnel, death status was only available for 57,601 (65.4%).

CASES AMONG HCP

88,082

DEATHS AMONG HCP

481

Previous Data

CDC has moved the following information to the [Previous U.S. COVID-19 Case Data](#) page.

- Level of community transmission by jurisdiction — last updated May 18, 2020
- Total number of cases by day — last updated April 28, 2020
- Number of cases by source of exposure — last updated April 16, 2020
- Number of cases from Wuhan, China and the Diamond Princess cruise — last updated April 16, 2020
- Number of cases by illness start date — last updated April 15, 2020

About the Data

Updated Daily

This page is updated daily based on data confirmed at 4:00pm ET the day before.



Reported by Jurisdiction's Health Department

Data on this page are reported voluntarily to CDC by each jurisdiction's health department. CDC encourages all jurisdictions to report the most complete and accurate information that best represents the current status of the pandemic in their jurisdiction.

Number of Jurisdictions

There are currently 56 U.S.-affiliated jurisdictions reporting cases of COVID-19. This includes 50 states, District of Columbia, Guam, New York City, the Northern Mariana Islands, Puerto Rico, and the U.S Virgin Islands. New York State's case and death counts do not include New York City's counts as they are separate jurisdictions.

Confirmed & Probable Counts

As of April 14, 2020, CDC case counts and death counts include both confirmed and probable cases and deaths. This change was made to reflect an [interim COVID-19 position statement](#)   issued by the Council for State and Territorial Epidemiologists on April 5, 2020. The position statement included a case definition and made COVID-19 a nationally notifiable disease. Nationally notifiable disease cases are voluntarily reported to CDC by jurisdictions.

A [confirmed case or death](#) is defined by meeting confirmatory laboratory evidence for COVID-19.

A [probable case or death](#) is defined by one of the following:

- Meeting clinical criteria AND epidemiologic evidence with no confirmatory laboratory testing performed for COVID-19
- Meeting presumptive laboratory evidence AND either clinical criteria OR epidemiologic evidence
- Meeting vital records criteria with no confirmatory laboratory testing performed for COVID19

Not all jurisdictions report confirmed and probable cases and deaths to CDC. When not available to CDC, it is noted as N/A.

Accuracy of Data

CDC does not know the exact number of COVID-19 illnesses, hospitalizations, and deaths for a variety of reasons. COVID-19 can cause mild illness, symptoms might not appear immediately, there are delays in reporting and testing, not everyone who is infected gets tested or seeks medical care, and there may be differences in how jurisdictions confirm numbers.

Changes & Fluctuations in Data

Health departments may update case data over time when they receive more complete and accurate information.

The number of new cases reported each day fluctuates. There is generally less reporting on the weekends and holidays.

Differences between CDC and Jurisdiction Data

If the number of cases or deaths reported by CDC is different from the number reported by jurisdiction health departments, data reported by jurisdictions should be considered the most up to date. The differences may be due to the timing of the reporting and website updates.

More Information

[COVIDView – A Weekly Surveillance Summary of U.S. COVID-19 Activity](#)

[Previous U.S. COVID-19 Case Data](#)

[FAQ: COVID-19 Data and Surveillance](#)

[Testing Data in the U.S.](#)

[World Map](#)

[Health Departments](#)

Page last reviewed: June 30, 2020

Content source: [National Center for Immunization and Respiratory Diseases \(NCIRD\), Division of Viral Diseases](#)