



Morbidity and Mortality

U.S. DEPARTMENT OF HEALTH, EDUCATION, AND WELFARE / PUBLIC HEALTH SERVICE HEALTH SERVICES AND MENTAL HEALTH ADMINISTRATION
DATE OF RELEASE: JULY 10, 1970 - ATLANTA, GEORGIA 30333

EPIDEMIOLOGIC NOTES AND REPORTS

VIRAL MENINGITIS - Metropolitan Atlanta, Georgia

A total of 47 cases of viral meningitis have been reported from metropolitan Atlanta, Georgia, since early May 1970; 36 of these cases were reported from the municipal hospital in Atlanta. In addition to the Atlanta cases, seven cases of viral meningitis were reported from other areas of the state. Although a peak number of cases were reported in the last 2 weeks of May, cases continued to be reported from the municipal hospital as of July 4 (Figure 1). The age distribution, as shown in Table 1, showed the disease to be occurring predominantly in children. More than 50 percent of the patients were less than 10 years of age. Nineteen percent were under 1 year of age; this included one case in a newborn infant. One 4-month-old girl had a readmission for viral meningitis 2 weeks after her discharge
(Continued on page 254)

CONTENTS

Epidemiologic Notes and Reports
 Viral Meningitis - Metropolitan Atlanta, Georgia 253
 Botulism - Stockton, California 260
 Current Trends
 Measles - United States 254

**CHANGE OF NAME FOR
NATIONAL COMMUNICABLE DISEASE CENTER**

We wish to announce the change of our name from the National Communicable Disease Center to the Center for Disease Control "CDC." There is no change in our mailing address, telephone number, or our concern for communicable disease control.

David J. Sencer, M.D.
 Director
 Center for Disease Control

TABLE I. CASES OF SPECIFIED NOTIFIABLE DISEASES: UNITED STATES
 (Cumulative totals include revised and delayed reports through previous weeks)

DISEASE	26th WEEK ENDED		MEDIAN 1965 - 1969	CUMULATIVE, FIRST 26 WEEKS		
	July 4, 1970	June 28, 1969		1970	1969	MEDIAN 1965 - 1969
Aseptic meningitis	82	62	43	935	776	776
Brucellosis	7	6	6	105	96	102
Diphtheria	2	1	2	186	70	79
Encephalitis, primary:						
Arthropod-borne & unspecified	27	21	26	539	489	652
Encephalitis, post-infectious	6	10	12	240	163	416
Hepatitis, serum	164	87	688	3,582	2,604	20,805
Hepatitis, infectious	927	833		27,833	23,618	
Malaria	86	57	31	1,748	1,316	994
Measles (rubeola)	690	663	696	36,179	17,928	54,627
Meningococcal infections, total	30	54	40	1,537	2,017	1,960
Civilian	27	51	37	1,383	1,826	1,793
Military	3	3	3	154	191	167
Mumps	1,145	1,265	---	67,795	61,066	---
Poliomyelitis, total	2	1	3	7	4	24
Paralytic	1	1	3	6	4	20
Rubella (German measles)	534	1,032	---	46,257	44,609	---
Tetanus	---	6	5	51	65	71
Tularemia	3	2	3	49	77	79
Typhoid fever	5	5	7	122	136	156
Typhus, tick-borne (Rky. Mt. spotted fever)	10	24	11	123	161	87
Rabies in animals	36	72	70	1,568	1,902	2,251

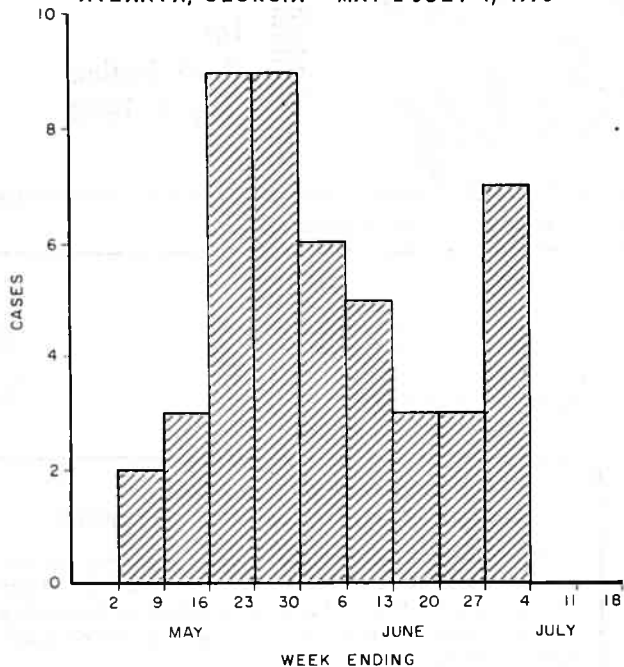
TABLE II. NOTIFIABLE DISEASES OF LOW FREQUENCY

	Cum.		Cum.
Anthrax:	1	Psittacosis:	15
Botulism: *	5	Rabies in Man:	---
Leptosy: Calif.-1	60	Rubella congenital syndrome:	38
Leptosporosis:	15	Trichinosis:	56
Plague: * N. Mex.-1	3	Typhus, murine: Ark.-1, Ohio-1	15

*Delayed Reports: Botulism: Alaska 1
 Plague: Calif. 1

VIRAL MENINGITIS - (Continued from front page)

Figure 1
CASES OF VIRAL MENINGITIS BY WEEK OF ONSET
ATLANTA, GEORGIA - MAY 2-JULY 4, 1970



from the hospital. Two cases were in children from one family.

The clinical symptoms during this outbreak have generally included headache (no common localization), stiff and painful neck, and vomiting. Two patients, ages 2 and 7 years, presented with seizures. Clinical signs often included low grade fever and nuchal rigidity. There has been no documentation of localizing neurologic signs or of muscle weakness, nor have sequelae been noted. Cerebrospinal fluid (CSF) has usually shown minimal to moderate pleocy-

Table 1
Viral Meningitis Cases by Age
Atlanta, Georgia - May-July 1970

Age Group (Years)	Number	Percent of Total
Less than 1	9	19.1
1-4	8	17.0
5-9	11	23.4
10-14	8	17.0
15-19	6	12.8
20-29	3	6.4
30-39	2	4.3
40+	0	4.3
Total	47	100.0

tosis, with the CSF differential usually reflecting a lymphocytosis. Duration of hospitalization in most cases has been from 3 to 4 days.

Specimens for viral studies were obtained from most of the patients hospitalized with the diagnosis of aseptic meningitis. Several isolates have been made in Rhesus monkey kidney tissue culture. Final reports on three patients revealed isolations of Echovirus type 6; this was isolated from the CSF, throat swab, and rectal swab of one patient, from CSF of the second patient, and from rectal and throat swabs of the third patient.

Investigation of the outbreak is continuing.

(Reported by Charles Konigsberg, Jr., M.D., Public Health Resident, Thomas W. McKinley, Director, Disease Investigations Service, John E. McCroan, Ph.D., Director, Epidemiology Branch, and Maurice R. Miot, Chief, Virus and Rickettsia Laboratory, Georgia Department of Public Health; William Marine, M.D., Department of Preventive and Community Medicine, Grady Memorial Hospital; and an EIS Officer.)

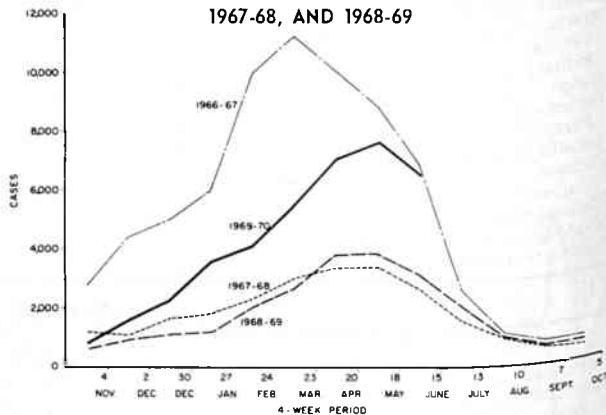
CURRENT TRENDS
MEASLES - United States

For the first 36 weeks of the current measles epidemiologic year* (EY) 1969-70, a total of 39,051 cases of measles were reported to the Center for Disease Control. This was an increase of nearly 20,000 cases above the total for the similar period in the preceding 1968-69 EY. Figure 2 shows the reported cases of measles by 4-week periods for the current and past 3 epidemiologic years. Measles incidence in EY 1969-70 was approximately double that of comparable periods in EY 1968-69 and 1967-68. The number of cases was highest in late May and early June and has declined in the last few weeks.

Table 2 shows the reported measles incidence for the United States by state and geographic division. Seven of the nine geographic divisions and 80 percent of the states reported increases over totals for the comparable period in the previous epidemiologic year. Cases occurred in both rural and urban areas.

*The epidemiologic year (EY) for measles begins with calendar week 41 and ends with calendar week 40 of the succeeding year.

Figure 2
REPORTED CASES OF MEASLES BY 4-WEEK PERIOD, USA
EPIDEMIOLOGIC YEAR 1969-70 COMPARED WITH 1966-67,
1967-68, AND 1968-69



(Reported by the Field Services Branch and Statistical Services Activity, Epidemiology Program, CDC.)

Table 2
Reported Cases of Measles by State, Geographic Divisions, United States
First 36 Weeks Epidemiologic Year 1969-1970
and Comparable Periods Epidemiologic Years 1967-1968 and 1968-1969

Division	Total* 24 Weeks Oct. 5, 1969 Through Mar. 28, 1970	Number Cases Per Four-Week Period Ended**			Total First 36 Weeks EY Oct. 5, 1969 Through June 20, 1970	Comparable 36 Weeks Total		EY 1969-70 Decrease (Increase) From 1968-69	EY 1968-69 Decrease (Increase) From 1967-68
		Apr. 25, 1970	May 23, 1970	June 20, 1970		1968-69	1967-68		
UNITED STATES	17,697	7,165	7,680	6,509	39,051	19,252	20,373	(19,799)	1,121
NEW ENGLAND	275	107	189	234	805	1,039	1,059	234	20
Maine	4	3	54	81	142	5	56	(137)	51
New Hampshire	20	2	4	28	54	235	145	181	(90)
Vermont	1	—	1	2	4	4	1	—	(3)
Massachusetts	165	95	75	78	413	167	339	(246)	172
Rhode Island	20	1	33	32	86	106	1	20	(105)
Connecticut	65	6	22	13	106	522	517	416	(5)
MIDDLE ATLANTIC	2,475	889	650	669	4,683	6,755	3,212	2,072	(3,543)
New York City	387	199	125	123	834	4,457	1,314	3,623	(3,143)
New York, Up-State	92	45	42	43	222	668	1,123	446	455
New Jersey	1,119	256	259	203	1,837	806	639	(1,031)	(167)
Pennsylvania	877	389	224	300	1,790	824	136	(966)	(688)
EAST NORTH CENTRAL	4,065	1,542	2,152	1,655	9,414	2,093	4,172	(7,321)	2,079
Ohio	1,072	823	900	795	3,590	320	329	(3,270)	9
Indiana	147	54	43	23	267	510	668	243	158
Illinois	2,154	301	666	374	3,495	404	1,572	(3,091)	1,168
Michigan	374	212	329	335	1,250	237	322	(1,013)	85
Wisconsin	318	152	214	128	812	622	1,281	(190)	659
WEST NORTH CENTRAL	2,386	714	495	1,077	4,672	569	466	(4,103)	(103)
Minnesota	24	3	10	2	39	6	20	(33)	14
Iowa	71	25	33	900	1,029	378	156	(651)	(222)
Missouri	218	483	343	98	1,142	16	79	(1,126)	63
North Dakota	150	128	41	49	368	14	137	(354)	123
South Dakota	89	23	12	7	131	1	7	(130)	6
Nebraska	1,779	52	47	3	1,881	150	56	(1,731)	(94)
Kansas	55	—	9	18	82	4	11	(78)	7
SOUTH ATLANTIC	2,579	1,714	1,669	1,064	7,026	2,498	1,675	(4,528)	(823)
Delaware	271	50	45	26	392	332	15	(60)	(317)
Maryland	311	476	326	198	1,311	35	92	(1,276)	57
District of Columbia	411	30	12	19	472	—	9	(472)	9
Virginia	615	456	484	334	1,889	985	409	(904)	(576)
West Virginia	96	40	91	48	275	204	296	(71)	92
North Carolina	305	155	202	133	795	277	346	(518)	69
South Carolina	181	153	86	78	498	121	18	(377)	(103)
Georgia	2	2	2	5	11	1	10	(10)	9
Florida	387	352	421	223	1,383	543	480	(840)	(63)
EAST SOUTH CENTRAL	206	166	327	248	947	99	733	(848)	634
Kentucky	111	80	160	111	462	57	189	(405)	132
Tennessee	52	77	117	83	329	18	229	(311)	211
Alabama	29	1	33	13	76	2	97	(74)	95
Mississippi	14	8	17	41	80	22	218	(58)	196
WEST SOUTH CENTRAL	3,936	1,544	1,479	690	7,649	4,320	5,027	(3,329)	707
Arkansas	16	3	9	1	29	16	2	(13)	(14)
Louisiana	41	14	10	22	87	121	6	34	(115)
Oklahoma	102	79	153	64	398	134	155	(264)	21
Texas	3,777	1,448	1,307	603	7,135	4,049	4,864	(3,086)	815
MOUNTAIN	903	210	265	199	1,577	678	1,215	(899)	537
Montana	91	4	1	7	103	10	100	(93)	90
Idaho	6	3	11	11	31	54	40	23	(14)
Wyoming	—	—	8	2	10	3	75	(7)	72
Colorado	80	11	20	16	127	123	630	(4)	507
New Mexico	98	43	20	19	180	248	101	68	(147)
Arizona	619	137	190	126	1,072	233	242	(839)	9
Utah	5	9	6	13	33	3	22	(30)	19
Nevada	4	3	9	5	21	4	5	(17)	1
PACIFIC	872	279	454	673	2,278	1,201	2,814	(1,077)	1,613
Washington	77	28	75	244	424	121	718	(303)	597
Oregon	114	8	24	38	184	242	504	58	262
California	623	237	280	279	1,419	808	1,547	(611)	739
Alaska	6	1	55	54	116	10	2	(106)	(8)
Hawaii	52	5	20	58	135	20	43	(115)	23
Puerto Rico	1,110	108	89	68	1,375	962	427	(413)	(535)

*Adjusted for 53rd Week.

**Includes revisions through June 30, 1970.

TABLE III. CASES OF SPECIFIED NOTIFIABLE DISEASES: UNITED STATES

FOR WEEKS ENDED

JULY 4, 1970 AND JUNE 28, 1969 (26th WEEK)

AREA	ASEPTIC MENIN- GITIS	BRUCEL- LOSIS	DIPH- THERIA	ENCEPHALITIS			HEPATITIS			MALARIA	
				Primary including unsp. cases		Post In- fectious	Serum	Infectious		1970	Cum. 1970
				1970	1969	1970	1970	1970	1969		
UNITED STATES.....	82	7	2	27	21	6	164	927	833	86	1,748
NEW ENGLAND.....	1	-	-	3	1	-	5	97	76	4	50
Maine.....	-	-	-	-	-	-	-	7	2	-	5
New Hampshire.....	-	-	-	-	-	-	2	7	6	-	1
Vermont.....	-	-	-	-	-	-	-	14	1	-	3
Massachusetts.....	-	-	-	1	1	-	2	40	37	3	27
Rhode Island.....	1	-	-	2	-	-	-	12	23	1	6
Connecticut.....	-	-	-	-	-	-	1	17	7	-	8
MIDDLE ATLANTIC.....	12	1	-	2	8	-	63	135	143	6	203
New York City.....	7	-	-	-	4	-	31	32	67	-	26
New York, Up-State...	2	1	-	1	-	-	6	30	17	2	58
New Jersey.....	2	-	-	-	-	-	24	47	30	1	50
Pennsylvania.....	1	-	-	1	4	-	2	26	29	3	69
EAST NORTH CENTRAL.....	13	-	-	10	4	2	20	165	128	4	93
Ohio.....	2	-	-	7	3	-	-	46	19	1	21
Indiana.....	1	-	-	-	-	-	-	15	5	-	8
Illinois.....	1	-	-	-	-	2	3	13	36	-	24
Michigan.....	8	-	-	3	1	-	17	85	63	3	40
Wisconsin.....	1	-	-	-	-	-	-	6	5	-	-
WEST NORTH CENTRAL.....	1	2	-	2	-	-	1	37	46	2	121
Minnesota.....	1	-	-	-	-	-	-	4	9	-	1
Iowa.....	-	1	-	-	-	-	-	4	7	-	9
Missouri.....	-	-	-	-	-	-	-	18	25	-	17
North Dakota.....	-	-	-	-	-	-	-	-	1	-	1
South Dakota.....	-	-	-	-	-	-	-	-	-	-	2
Nebraska.....	-	-	-	-	-	-	-	-	2	-	2
Kansas.....	-	1	-	2	-	-	1	11	2	2	89
SOUTH ATLANTIC.....	23	2	-	2	5	1	20	109	95	18	337
Delaware.....	-	-	-	-	-	-	-	-	-	-	1
Maryland.....	-	-	-	-	-	1	3	18	16	-	32
Dist. of Columbia....	-	-	-	-	-	-	2	3	-	-	2
Virginia.....	-	2	-	-	-	-	1	20	6	-	40
West Virginia.....*	-	-	-	-	-	-	1	1	6	-	3
North Carolina.....*	2	-	-	1	1	-	3	14	12	6	139
South Carolina.....	1	-	-	-	1	-	-	-	8	1	29
Georgia.....	-	-	-	-	-	-	-	20	14	10	59
Florida.....	20	-	-	1	3	-	10	33	33	1	32
EAST SOUTH CENTRAL.....	3	-	-	1	-	-	-	36	44	1	131
Kentucky.....	-	-	-	-	-	-	-	10	15	-	110
Tennessee.....	3	-	-	1	-	-	-	16	15	-	-
Alabama.....	-	-	-	-	-	-	-	9	4	-	12
Mississippi.....	-	-	-	-	-	-	-	1	10	1	9
WEST SOUTH CENTRAL.....	8	1	2	2	1	-	6	67	58	13	328
Arkansas.....	-	-	-	-	-	-	-	4	-	-	5
Louisiana.....	3	-	1	2	1	-	3	8	15	1	22
Oklahoma.....	-	-	-	-	-	-	-	7	5	-	46
Texas.....*	5	1	1	-	-	-	3	48	38	12	255
MOUNTAIN.....	2	-	-	-	-	-	4	57	38	33	144
Montana.....	1	-	-	-	-	-	-	1	3	-	4
Idaho.....	-	-	-	-	-	-	-	2	1	-	3
Wyoming.....	-	-	-	-	-	-	-	1	-	-	-
Colorado.....	-	-	-	-	-	-	4	40	11	32	126
New Mexico.....*	-	-	-	-	-	-	-	1	6	1	4
Arizona.....	1	-	-	-	-	-	-	10	9	-	5
Utah.....	-	-	-	-	-	-	-	2	8	-	2
Nevada.....	-	-	-	-	-	-	-	-	-	-	-
PACIFIC.....	19	1	-	5	2	3	45	224	205	5	341
Washington.....	-	-	-	-	-	-	-	7	33	1	25
Oregon.....	-	-	-	-	-	-	1	17	7	-	14
California.....	18	1	-	5	2	3	42	191	165	4	221
Alaska.....*	-	-	-	-	-	-	2	1	-	-	-
Hawaii.....	1	-	-	-	-	-	-	8	-	-	81
Puerto Rico.....*	-	-	-	-	-	-	4	20	21	-	1
Virgin Islands.....	-	-	-	-	-	-	-	2	-	-	-

* Delayed reports: Hepatitis, serum: N.J. delete 3, N.M. 1, P.R. 1
Hepatitis, infectious: N.J. delete 5, W. Va. delete 1, N.C. delete 1, Tex. 11,
N.Mex. 1, Alaska 3, P.R. 2

TABLE III. CASES OF SPECIFIED NOTIFIABLE DISEASES: UNITED STATES

FOR WEEKS ENDED

JULY 4, 1970 AND JUNE 28, 1969(26th WEEK) - CONTINUED

AREA	MEASLES (Rubeola)			MENINGOCOCCAL INFECTIONS, TOTAL			MUMPS		POLIOMYELITIS		
	1970	Cumulative		1970	Cumulative		1970	Cum. 1970	Total		Cum. 1970
		1970	1969		1970	1969			1970	1970	
UNITED STATES.....	690	36,179	17,928	30	1,537	2,017	1,145	67,795	2	1	6
NEW ENGLAND.....	22	805	913	1	69	70	152	8,270	-	-	-
Maine.....	9	183	5	-	3	6	7	647	-	-	-
New Hampshire.*.....	-	48	234	-	5	2	1	313	-	-	-
Vermont.....	1	5	2	-	6	-	4	567	-	-	-
Massachusetts.*.....	9	409	161	1	30	31	50	2,593	-	-	-
Rhode Island.....	3	89	18	-	5	6	30	1,289	-	-	-
Connecticut.....	-	71	493	-	20	25	60	2,861	-	-	-
MIDDLE ATLANTIC.....	72	4,320	6,734	9	270	328	112	6,790	-	-	-
New York City.....	19	763	4,520	4	67	67	77	2,297	-	-	-
New York, Up-State...	4	205	540	-	52	51	NN	NN	-	-	-
New Jersey.....	25	1,620	797	5	104	139	19	1,941	-	-	-
Pennsylvania.....	24	1,732	877	-	47	71	16	2,552	-	-	-
EAST NORTH CENTRAL.....	240	8,876	1,787	2	181	268	324	17,844	-	-	-
Ohio.....	40	3,536	299	-	73	94	54	3,026	-	-	-
Indiana.....	-	241	451	-	18	33	21	1,624	-	-	-
Illinois.....	84	2,937	363	-	38	39	22	1,598	-	-	-
Michigan.....	93	1,388	190	2	45	85	54	4,507	-	-	-
Wisconsin.....	23	774	484	-	7	17	173	7,089	-	-	-
WEST NORTH CENTRAL.....	7	3,658	478	-	76	106	2	3,580	-	-	1
Minnesota.....	-	36	4	-	11	22	-	335	-	-	-
Iowa.....	-	1,008	319	-	11	14	-	2,239	-	-	-
Missouri.....	5	1,223	16	-	46	46	-	234	-	-	1
North Dakota.....	-	311	7	-	3	-	2	250	-	-	-
South Dakota.....	2	85	2	-	-	1	-	22	-	-	-
Nebraska.....	-	923	126	-	3	9	-	364	-	-	-
Kansas.....	-	72	4	-	2	14	-	136	-	-	-
SOUTH ATLANTIC.....	138	6,735	2,311	6	324	353	186	7,461	1	-	-
Delaware.....	1	253	360	-	3	4	9	240	-	-	-
Maryland.....	17	1,333	62	-	33	33	67	778	-	-	-
Dist. of Columbia....	1	341	-	-	1	8	-	171	-	-	-
Virginia.....	27	1,879	844	-	31	44	29	1,726	-	-	-
West Virginia.....	9	275	162	-	6	16	35	1,828	1	-	-
North Carolina.....	41	777	285	1	65	60	NN	NN	-	-	-
South Carolina.....	22	513	107	2	41	50	1	723	-	-	-
Georgia.....	-	12	1	1	30	60	-	-	-	-	-
Florida.....	20	1,352	490	2	114	78	45	1,995	-	-	-
EAST SOUTH CENTRAL.....	32	1,062	98	1	119	127	74	3,890	-	-	-
Kentucky.....	25	555	58	-	41	46	5	1,406	-	-	-
Tennessee.....	6	337	16	1	50	46	69	2,223	-	-	-
Alabama.....	1	83	3	-	21	20	-	221	-	-	-
Mississippi.....	-	87	21	-	7	15	-	40	-	-	-
WEST SOUTH CENTRAL.....	50	7,083	4,019	5	212	277	86	6,577	1	1	5
Arkansas.....	-	29	16	-	17	28	-	109	-	-	-
Louisiana.....	1	87	120	1	55	73	-	21	-	-	-
Oklahoma.....	4	408	130	4	17	27	2	2,374	-	-	-
Texas.....	45	6,559	3,753	-	123	149	84	4,073	1	1	5
MOUNTAIN.....	47	1,375	669	-	27	36	59	2,992	-	-	-
Montana.....	9	31	10	-	1	5	8	591	-	-	-
Idaho.....	-	31	84	-	5	6	1	83	-	-	-
Wyoming.....	-	10	-	-	1	-	-	30	-	-	-
Colorado.....	28	154	115	-	7	6	31	977	-	-	-
New Mexico.....	3	161	192	-	-	6	5	586	-	-	-
Arizona.....	7	935	261	-	11	9	14	605	-	-	-
Utah.....	-	32	6	-	2	2	-	120	-	-	-
Nevada.....	-	21	1	-	-	2	-	-	-	-	-
PACIFIC.....	82	2,265	919	6	259	452	150	10,391	-	-	-
Washington.....	17	456	57	1	36	50	3	4,056	-	-	-
Oregon.....	7	194	188	-	19	11	23	891	-	-	-
California.....	25	1,327	643	5	203	370	87	4,210	-	-	-
Alaska.*.....	5	132	8	-	-	11	4	366	-	-	-
Hawaii.....	28	156	23	-	1	10	33	868	-	-	-
Puerto Rico.....	4	836	1,056	-	3	15	15	641	-	-	-
Virgin Islands.....	-	6	34	-	1	1	-	1	-	-	-

*Delayed reports: Measles: Mass. delete 16, Alaska 11
Mumps: N.H. 3, Alaska 7

Morbidity and Mortality Weekly Report

TABLE III. CASES OF SPECIFIED NOTIFIABLE DISEASES: UNITED STATES

FOR WEEKS ENDED

JULY 4, 1970 AND JUNE 28, 1969 (26th WEEK) - CONTINUED

AREA	RUBELLA		TETANUS		TULAREMIA		TYPHOID FEVER		TYPHUS FEVER TICK-BORNE (Rky. Mt. Spotted)		RABIES IN ANIMALS	
	1970	Cum. 1970	1970	Cum. 1970	1970	Cum. 1970	1970	Cum. 1970	1970	Cum. 1970	1970	Cum. 1970
UNITED STATES.....	534	46,257	-	51	3	49	5	122	10	123	36	1,568
NEW ENGLAND.....	62	2,213	-	3	-	-	-	5	-	-	1	56
Maine.....	1	365	-	-	-	-	-	-	-	-	-	16
New Hampshire.....	-	150	-	-	-	-	-	-	-	-	-	-
Vermont.....	2	49	-	-	-	-	-	-	-	-	1	38
Massachusetts.....	18	1,045	-	2	-	-	-	3	-	-	-	-
Rhode Island.....	-	74	-	-	-	-	-	-	-	-	-	1
Connecticut.....	41	530	-	1	-	-	-	2	-	-	-	1
MIDDLE ATLANTIC.....	30	3,737	-	5	-	1	-	28	3	6	8	153
New York City.....	14	515	-	2	-	-	-	9	-	-	-	-
New York, Up-State..	11	371	-	-	-	1	-	8	2	3	8	145
New Jersey.....	1	808	-	2	-	-	-	4	-	1	-	-
Pennsylvania.....	4	2,043	-	1	-	-	-	7	1	2	-	8
EAST NORTH CENTRAL....	155	9,545	-	8	-	17	-	15	-	-	3	120
Ohio.....	2	1,921	-	-	-	2	-	5	-	-	-	35
Indiana.....	19	1,697	-	1	-	13	-	1	-	-	-	6
Illinois.....	87	1,601	-	3	-	2	-	3	-	-	2	41
Michigan.....	24	2,424	-	4	-	-	-	6	-	-	-	11
Wisconsin.....	23	1,902	-	-	-	-	-	-	-	-	1	27
WEST NORTH CENTRAL....	5	3,163	-	2	2	7	1	5	-	1	10	248
Minnesota.....	1	95	-	-	-	-	-	1	-	-	3	51
Iowa.....	3	1,974	-	-	-	-	-	1	-	-	6	50
Missouri.....	1	374	-	1	2	6	-	1	-	1	-	52
North Dakota.....	-	124	-	-	-	1	-	-	-	-	-	24
South Dakota.....	-	1	-	1	-	-	-	-	-	-	-	17
Nebraska.....	-	540	-	-	-	-	1	2	-	-	-	4
Kansas.....	-	55	-	-	-	-	-	-	-	-	1	50
SOUTH ATLANTIC.....	48	5,897	-	11	-	7	2	19	4	84	5	338
Delaware.....	-	40	-	-	-	-	-	-	-	3	-	-
Maryland.....	4	300	-	-	-	-	-	6	-	8	-	1
Dist. of Columbia..	-	17	-	1	-	-	-	-	-	-	-	-
Virginia.....	10	658	-	-	-	-	2	1	25	2	2	160
West Virginia.....	5	1,168	-	-	-	-	-	-	2	-	-	78
North Carolina.....	3	38	-	-	-	4	1	2	2	25	-	1
South Carolina.....	8	595	-	1	-	-	-	1	19	-	-	-
Georgia.....	-	-	-	1	-	2	1	7	2	2	2	52
Florida.....	18	3,081	-	8	-	1	-	2	-	-	1	46
EAST SOUTH CENTRAL....	56	2,377	-	4	-	2	-	9	1	14	2	127
Kentucky.....	8	870	-	-	-	1	-	1	-	-	2	75
Tennessee.....	44	1,186	-	1	-	1	-	5	1	8	-	36
Alabama.....	4	251	-	3	-	-	-	3	-	3	-	16
Mississippi.....	-	70	-	-	-	-	-	-	-	3	-	-
WEST SOUTH CENTRAL....	64	8,237	-	10	1	11	2	10	2	14	5	290
Arkansas.....	1	33	-	3	-	3	2	5	-	2	1	48
Louisiana.....	4	145	-	2	-	2	-	1	-	-	-	45
Oklahoma.....	1	792	-	-	-	4	-	-	2	11	1	56
Texas.....	58	7,267	-	5	1	2	-	4	-	1	3	141
MOUNTAIN.....	16	1,795	-	-	-	3	-	8	-	3	-	53
Montana.....	2	292	-	-	-	-	-	1	-	-	-	1
Idaho.....	4	169	-	-	-	-	-	-	-	-	-	1
Wyoming.....	-	133	-	-	-	-	-	-	-	1	-	1
Colorado.....	6	358	-	-	-	-	2	-	2	-	-	30
New Mexico.....	3	171	-	-	-	-	5	-	-	-	-	9
Arizona.....	1	519	-	-	-	-	-	-	-	-	-	11
Utah.....	-	153	-	-	-	3	-	-	-	-	-	1
Nevada.....	-	-	-	-	-	-	-	-	-	-	-	-
PACIFIC.....	98	9,293	-	8	-	1	-	23	-	1	2	183
Washington.....	1	4,538	-	1	-	-	-	3	-	-	-	1
Oregon.....	53	710	-	3	-	-	-	-	-	-	-	1
California.....	41	3,770	-	4	-	1	-	18	-	1	2	181
Alaska.....	-	89	-	-	-	-	-	1	-	-	-	-
Hawaii.....	3	186	-	-	-	-	-	1	-	-	-	-
Puerto Rico.....	1	26	-	4	-	-	-	3	-	-	3	30
Virgin Islands.....	-	-	-	-	-	-	-	-	-	-	-	-

*Delayed reports: Typhoid Fever: Colo. 1
RMSF: Va. delete 1

Morbidity and Mortality Weekly Report

259

Week No. **TABLE IV. DEATHS IN 122 UNITED STATES CITIES FOR WEEK ENDED JULY 4, 1970**

26

(By place of occurrence and week of filing certificate. Excludes fetal deaths)

Area	All Causes		Pneumonia and Influenza All Ages	Under 1 year All Causes	Area	All Causes		Pneumonia and Influenza All Ages	Under 1 year All Causes	
	All Ages	65 years and over				All Ages	65 years and over			
NEW ENGLAND:	624	370	35	20	SOUTH ATLANTIC:	1,034	527	24	42	
Boston, Mass.-----	184	94	13	5	Atlanta, Ga.-----	130	62	2	5	
Bridgeport, Conn.-----	45	28	1	1	Baltimore, Md.-----	237	134	2	7	
Cambridge, Mass.-----	18	12	6	1	Charlotte, N. C.-----	43	20	—	3	
Fall River, Mass.-----	26	22	—	—	Jacksonville, Fla.-----	70	26	1	3	
Hartford, Conn.-----	43	22	3	3	Miami, Fla.-----	93	49	—	2	
Lowell, Mass.-----	29	25	1	1	Norfolk, Va.-----	44	20	1	4	
Lynn, Mass.-----	23	13	1	—	Richmond, Va.-----	71	33	2	2	
New Bedford, Mass.-----	22	17	1	—	Savannah, Ga.-----	24	14	—	1	
New Haven, Conn.-----	46	22	3	6	St. Petersburg, Fla.-----	72	54	2	1	
Providence, R. I.-----	61	33	2	2	Tampa, Fla.-----	67	37	8	1	
Somerville, Mass.-----	14	7	1	—	Washington, D. C.-----	134	53	4	8	
Springfield, Mass.-----	34	20	3	1	Wilmington, Del.-----	49	25	2	5	
Waterbury, Conn.-----	25	17	—	—	EAST SOUTH CENTRAL:	543	289	15	40	
Worcester, Mass.-----	54	38	—	—	Birmingham, Ala.-----	103	60	—	5	
MIDDLE ATLANTIC:	2,937	1,654	90	158	Chattanooga, Tenn.-----	36	22	2	5	
Albany, N. Y.-----	40	21	1	3	Knoxville, Tenn.-----	23	13	—	—	
Allentown, Pa.-----	34	26	1	—	Louisville, Ky.-----	110	53	5	7	
Buffalo, N. Y.-----	129	79	2	5	Memphis, Tenn.-----	103	58	1	10	
Camden, N. J.-----	38	19	3	3	Mobile, Ala.-----	66	35	4	3	
Elizabeth, N. J.-----	32	20	—	2	Montgomery, Ala.-----	30	17	—	4	
Erie, Pa.-----	42	28	6	1	Nashville, Tenn.-----	72	31	3	6	
Jersey City, N. J.-----	63	40	3	5	WEST SOUTH CENTRAL:	1,013	495	35	64	
Newark, N. J.-----	49	19	2	4	Austin, Tex.-----	29	18	5	1	
New York City, N. Y.-----	1,562	867	45	91	Baton Rouge, La.-----	42	22	—	—	
Paterson, N. J.-----	31	20	2	1	Corpus Christi, Tex.-----	25	16	1	3	
Philadelphia, Pa.-----	399	221	2	21	Dallas, Tex.-----	134	65	4	8	
Pittsburgh, Pa.-----	129	58	5	6	El Paso, Tex.-----	30	15	1	2	
Reading, Pa.-----	35	16	—	2	Fort Worth, Tex.-----	77	39	3	11	
Rochester, N. Y.-----	111	69	8	5	Houston, Tex.-----	193	93	4	2	
Schenectady, N. Y.-----	31	19	1	—	Little Rock, Ark.-----	43	27	4	5	
Scranton, Pa.-----	32	23	4	—	New Orleans, La.-----	123	62	3	14	
Syracuse, N. Y.-----	89	51	—	4	Oklahoma City, Okla.-----	106	43	1	5	
Trenton, N. J.-----	36	15	—	3	San Antonio, Tex.-----	114	50	—	8	
Utica, N. Y.-----	25	21	1	—	Shreveport, La.-----	53	27	5	2	
Yonkers, N. Y.-----	30	22	4	1	Tulsa, Okla.-----	44	18	4	3	
EAST NORTH CENTRAL:	2,501	1,418	72	131	MOUNTAIN:	442	231	17	23	
Akron, Ohio.-----	55	33	—	2	Albuquerque, N. Mex.-----	43	20	2	1	
Canton, Ohio.-----	36	21	4	3	Colorado Springs, Colo.-----	40	20	2	4	
Chicago, Ill.-----	782	453	21	44	Denver, Colo.-----	129	63	5	7	
Cincinnati, Ohio.-----	121	73	1	3	Ogden, Utah.-----	12	6	3	—	
Cleveland, Ohio.-----	166	86	1	11	Phoenix, Ariz.-----	108	62	—	4	
Columbus, Ohio.-----	134	78	—	7	Pueblo, Colo.-----	16	9	3	—	
Dayton, Ohio.-----	63	36	1	2	Salt Lake City, Utah.-----	42	19	1	6	
Detroit, Mich.-----	416	223	17	28	Tucson, Ariz.-----	52	32	1	1	
Evansville, Ind.-----	28	21	—	1	PACIFIC:	1,541	906	33	60	
Flint, Mich.-----	41	14	1	5	Berkeley, Calif.-----	23	14	—	—	
Fort Wayne, Ind.-----	44	24	3	1	Fresno, Calif.-----	46	29	3	1	
Gary, Ind.-----	36	10	1	2	Glendale, Calif.-----	40	31	—	1	
Grand Rapids, Mich.-----	53	38	5	—	Honolulu, Hawaii.-----	31	16	—	4	
Indianapolis, Ind.-----	151	79	2	6	Long Beach, Calif.-----	90	46	5	—	
Madison, Wis.-----	55	29	6	4	Los Angeles, Calif.-----	494	300	11	17	
Milwaukee, Wis.-----	87	55	—	2	Oakland, Calif.-----	59	34	—	5	
Peoria, Ill.-----	30	19	—	3	Pasadena, Calif.-----	30	16	1	3	
Rockford, Ill.-----	34	19	3	2	Portland, Oreg.-----	151	99	2	5	
South Bend, Ind.-----	34	26	4	2	Sacramento, Calif.-----	60	32	1	—	
Toledo, Ohio.-----	80	55	1	2	San Diego, Calif.-----	102	62	1	3	
Youngstown, Ohio.-----	55	26	1	1	San Francisco, Calif.-----	169	82	3	8	
WEST NORTH CENTRAL:	731	435	20	52	San Jose, Calif.-----	46	31	1	5	
Des Moines, Iowa.-----	62	38	—	1	Seattle, Wash.-----	121	71	3	3	
Duluth, Minn.-----	20	12	3	—	Spokane, Wash.-----	48	22	2	3	
Kansas City, Kans.-----	31	16	3	6	Tacoma, Wash.-----	31	21	—	2	
Kansas City, Mo.-----	130	74	1	8	Total	4,451	11,366	6,325	341	590
Lincoln, Nebr.-----	17	12	1	1	Expected Number	4,718	12,221	7,002	351	498
Minneapolis, Minn.-----	100	60	4	10	Cumulative Total (includes reported corrections for previous weeks)	344,545	197,503	14,422	15,971	
Omaha, Nebr.-----	53	30	—	4						
St. Louis, Mo.-----	189	110	3	13						
St. Paul, Minn.-----	72	55	—	2						
Wichita, Kans.-----	57	28	5	7						
Las Vegas, Nev.*	24	6	1	1						

*Mortality data are being collected from Las Vegas, Nev., for possible inclusion in this table, however, for statistical reasons, these data will be listed only and not included in the total, expected number, or cumulative total, until 5 years of data are collected.

+ Delayed report for week ended June 27, 1970

EPIDEMIOLOGIC NOTES AND REPORTS

BOTULISM - Stockton, California

On June 2, 1970, a 45-year-old housewife opened a bottle of home-cured olives. She ate only part of one olive because it smelled and tasted "bad." Approximately 36 hours later, she noted the onset of dysphagia, blurred vision, and weakness. These complaints were diagnosed by a local physician as part of a postmenopausal syndrome. Over the next 2 weeks they abated without specific therapy.

On June 7 the patient's 50-year-old brother consumed one or more olives from the same jar. Twenty-four to 36 hours later, he developed dysarthria, dysphagia, ptosis, and diplopia. He was hospitalized, and nonlocalized cerebrovascular disease or toxic exposure was considered to be the most likely cause of illness. The patient appeared to be responding well to steroids and supportive therapy until June 13 when he suddenly expired. A few minutes before death, the floor nurse had been in the patient's room conversing with him. He was alert and in no apparent distress. The nurse left the room momentarily and upon returning, found him dead. The diagnosis of botulism was not considered until June 19 when the patient's sister recalled eating the bad olives.

Acute sera were not available from either patient to determine the presence of *Clostridium botulinum* toxin; however, the jar of olives from which the two patients ate has yielded type A toxin. When this jar was opened in the state laboratories, no odor or signs of spoilage were detected.

It was not possible to determine the exact number of olives ingested by the deceased, but it could not have been many because the jar was noted to be three quarters full, and, in addition, an undetermined number of olives had been baked in a tamale pie, eaten by four other individuals. The fact that none of these people manifested any symptomatology consistent with botulism is probably attributable to the high temperatures used in baking the pie.

(Reported by William E. Latham, M.D., and W. Langley Collins, M.D., Physicians, Stockton; Jack J. Williams, M.D., District Health Officer, San Joaquine Local Health District; Thaddeus F. Midura, Ph.D., and Ronald M. Wood, Ph.D., Chief, Microbial Diseases Laboratory, and Ronald R. Roberto, M.D., Epidemiology Section, and James Chin, M.D., Chief, Bureau of Communicable Disease Control, California State Department of Public Health.)

Editorial Comment:

This is the fourth episode of botulism associated with home-cured olives since 1950. All occurred in California, with two due to type A, one to type B, and the fourth not characterized.

The sudden and unexpected death of one of these patients is consistent with the hypothesis of botulinum toxin having a direct arrhythmia producing cardiac toxicity. With this possibility in mind, cardiac monitoring in an intensive care unit should be considered.

ERRATUM, Vol. 19, No. 25, p. 244

In the article "Laboratory Acquired Typhoid Fever - Baltimore, Maryland," correct the first sentence of the fourth paragraph to read ". . . and that from the second was identified as *S. typhi* phage type A, negative with 46 phage." The A had been left out originally.

THE MORBIDITY AND MORTALITY WEEKLY REPORT, WITH A CIRCULATION OF 21,000 IS PUBLISHED AT THE CENTER FOR DISEASE CONTROL, ATLANTA, GEORGIA.

DIRECTOR, CENTER FOR DISEASE CONTROL DAVID J. SENCER, M.D.
DIRECTOR, EPIDEMIOLOGY PROGRAM PHILIP S. BRACHMAN, M.D.

EDITOR
MANAGING EDITOR

MICHAEL B. GREGG, M.D.
PRISCILLA B. HOLMAN

IN ADDITION TO THE ESTABLISHED PROCEDURES FOR REPORTING MORBIDITY AND MORTALITY, THE CENTER FOR DISEASE CONTROL WELCOMES ACCOUNTS OF INTERESTING OUTBREAKS OR CASE INVESTIGATIONS WHICH ARE OF CURRENT INTEREST TO HEALTH OFFICIALS AND WHICH ARE DIRECTLY RELATED TO THE CENTER FOR DISEASE CONTROL. SUCH COMMUNICATIONS SHOULD BE ADDRESSED TO:

CENTER FOR DISEASE CONTROL
ATTN: THE EDITOR
MORBIDITY AND MORTALITY WEEKLY REPORT
ATLANTA, GEORGIA 30333

NOTE: THE DATA IN THIS REPORT ARE PROVISIONAL AND ARE BASED ON WEEKLY TELEGRAMS TO THE CDC BY THE INDIVIDUAL STATE HEALTH DEPARTMENTS. THE REPORTING WEEK CONCLUDES AT CLOSE OF BUSINESS ON FRIDAY; COMPILED DATA ON A NATIONAL BASIS ARE OFFICIALLY RELEASED TO THE PUBLIC ON THE SUCCEEDING FRIDAY.

U.S. DEPARTMENT OF HEALTH, EDUCATION, AND WELFARE
PUBLIC HEALTH SERVICE
HEALTH SERVICES AND MENTAL HEALTH ADMINISTRATION
CENTER FOR DISEASE CONTROL
ATLANTA, GEORGIA 30333
OFFICIAL BUSINESS

2/69 46-1-10, 18, 19, 22
LIBRARY
COMMUNICABLE DISEASE CENTER

POSTAGE AND FEES PAID
U.S. DEPARTMENT OF H.E.W.

