



Coronavirus Disease 2019 (COVID-19)

Hospitalization Forecasts

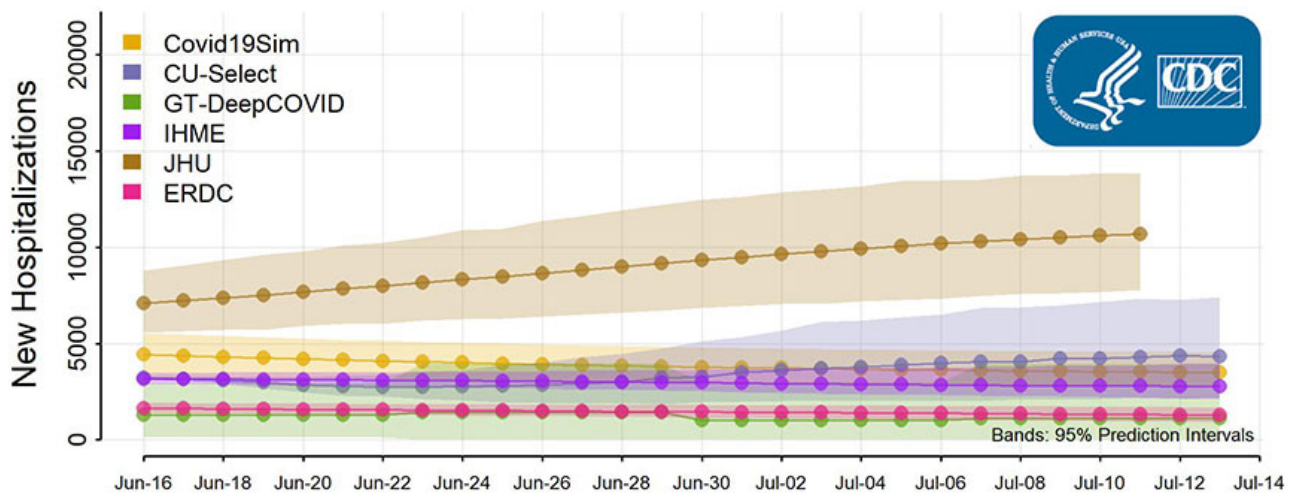
Updated June 17, 2020

Interpretation of Forecasts of New Hospitalizations

- Numbers and trends in new COVID-19 hospitalizations per day vary among national forecasts. This week, national forecasts from two models suggest an increase in the number of daily hospitalizations over the next four weeks, while the other four models forecast declines. Near the end of the forecast period, there may be 1,000 to 11,000 new COVID-19 hospitalizations per day.
- Forecasts estimate the number of new hospitalizations from a variety of data sets of COVID-19 cases or deaths. The use of different data sets, with different limitations—along with the use of different assumptions about social distancing—may result in the high variation among forecasts.

National Forecasts

National Forecast



- The six national forecasts show the predicted number of new COVID-19 hospitalizations per day for the next four weeks in the United States.
- The forecasts make different assumptions about hospitalization rates and levels of social distancing and other interventions and use different methods to estimate the number of new hospitalizations. See models below for details.

State Forecasts

Eight state-level models predicting the number of new hospitalizations were submitted this week. These forecasts show the predicted number of new COVID-19 hospitalizations per day for the next four weeks in each state. Each state forecast uses a different scale, due to differences in the number of new COVID-19 cases occurring per day in each state.

[Download state forecasts](#)  [7 pages]¹

[Download forecast data](#) 

Forecast Assumptions

These forecasts make different assumptions about social distancing measures and use different methods and data sets to estimate the number of new hospitalizations. Individual models are described in more detail below.

Social distancing is incorporated into the forecasts in two different ways:

- The national and state-level forecasts from Columbia University, the COVID-19 Simulator Consortium, the Institute for Health Metrics and Evaluation (IHME), and the Johns Hopkins University Infectious Disease Dynamics Lab (JHU) make assumptions about how levels of social distancing will change in the future.
- The national and state-level forecasts from the Georgia Institute of Technology, College of Computing, and the US Army Engineer Research and Development Center (ERDC) and the state-level forecasts from COVID Act Now and the Los Alamos National Laboratory (LANL) assume that existing social distancing measures in each state will continue through the projected four-week time period.

The rate of new hospitalizations is estimated using three approaches:

- The forecasts from Columbia University, COVID Act Now, the COVID-19 Simulator Consortium, LANL, ERDC, and JHU assume that a certain fraction of infected people will be hospitalized.
- The IHME forecast estimates hospitalizations based on numbers of [forecasted deaths](#).
- The forecast from the Georgia Institute of Technology, College of Computing, uses COVID-19 hospitalization data reported by some states to forecast future hospitalizations.

Modeling Groups

Forecasts were provided by these modeling groups:

Columbia University [↗](#)

Model name: CU-Select

Intervention assumptions:

- This model assumes that contact rates will increase 5% per week over the next two weeks. The reproductive number is then set to 1 for the remainder of the projection period.
- The model uses state-specific hospitalization data, when available. In states without hospitalization data, the model uses the national average value for hospitalization data.

Methods: Metapopulation SEIR model.

COVID Act Now (state-level forecasts only) [↗](#)

Model name: CAN

Intervention assumptions:

- This model assumes that the effects of current interventions are reflected in the observed data and that those effects will continue going forward.
- The number of new hospitalizations per day are estimated from the number of infections, using hospitalization rates reported for California counties.

Methods: SEIR model.

COVID-19 Simulator Consortium [↗](#)

Model name: Covid19Sim

Intervention assumptions:

- This model is based on assumptions about how levels of social distancing will change in the future. It assumes a 20% increase in mobility as each state reopens.
- The number of new hospitalizations per day are estimated from the number of infections, using state-specific hospitalization rates.

Methods: SEIR model.

Georgia Institute of Technology, College of Computing [↗](#)

Model name: GA-DeepCOVID (formerly: GA_Tech)

Intervention assumptions:

- This model assumes that the effects of interventions are reflected in the observed data and will continue going forward.
- Daily hospitalizations are predicted from publicly available, state-level data sources.

Methods: Deep learning.

Institute of Health Metrics and Evaluation [↗](#)

Model name: IHME

Intervention assumptions:

- Projections are adjusted to reflect differences in aggregate population mobility and community mitigation policies.
- Daily hospitalizations are estimated from predictions of daily deaths, using state hospitalization rates, where available

Methods: Combination of a mechanistic disease transmission model and a curve-fitting approach.

Johns Hopkins University, Infectious Disease Dynamics Lab [↗](#)

Model name: JHU

Intervention assumptions:

- This model assumes that the effectiveness of interventions is reduced after shelter-in-place orders are lifted.
- Daily hospitalizations are estimated from predictions of daily cases. A standard proportion is applied to all states.

Methods: Metapopulation SEIR model.

Los Alamos National Laboratory (state-level forecasts only) [↗](#)

Model name: LANL

Intervention assumptions:

- This model assumes interventions in place on the first day of the forecast will remain in place for the next four weeks.
- State demographics and age-group symptomatic case hospitalization rates are used to estimate the daily number of hospitalizations, based on estimates of the total number of infections.

Methods: Statistical dynamical growth model accounting for population susceptibility

US Army Engineer Research and Development Center [↗](#)

Model name: ERDC

Intervention assumptions:

- This model assumes that the effects of current interventions are reflected in the observed data and that those effects will continue going forward.
- The number of new hospitalizations per day are estimated from the number of infections, using state-specific hospitalization rates.

Methods: SEIR mechanistic model.

¹ The full range of the prediction intervals is not visible for all state plots. Please see the forecast data for the full range of state specific prediction intervals.

Additional Resources

[Previous COVID-19 Hospitalization Forecasts](#)

[FAQ: COVID-19 Data and Surveillance](#)

[CDC COVID Data Tracker](#)

[COVID-19 Mathematical Modeling](#)