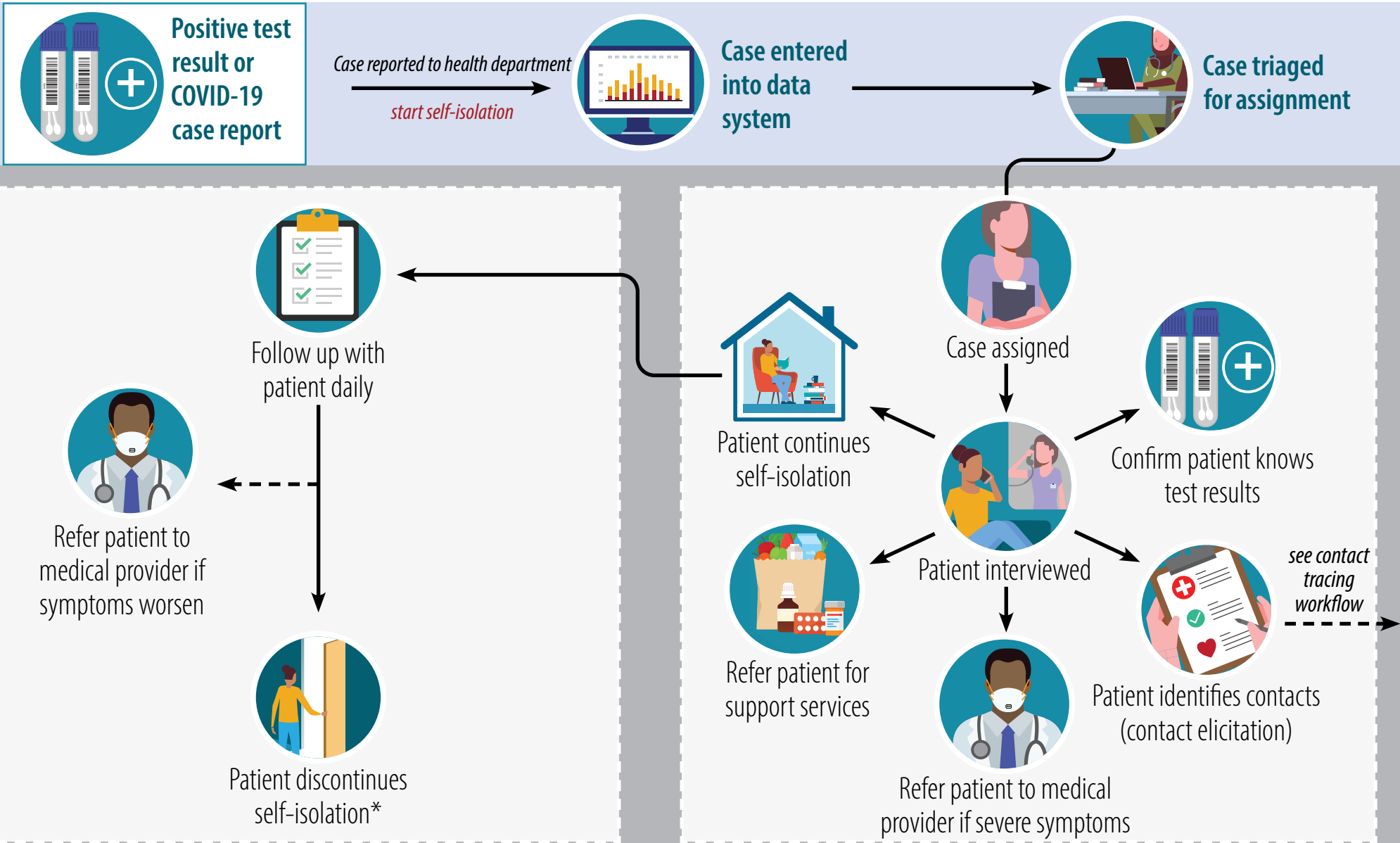


# CASE INVESTIGATION WORKFLOW (COVID-19)

Accessible version <https://www.cdc.gov/coronavirus/2019-ncov/php/contact-tracing/contact-tracing-plan/investigating-covid-19-case.html>



\* The decision to end self-isolation should be made in context of local circumstances. Strategies based on symptoms, time, and test results can result in different time frames.



[cdc.gov/COVID19](https://cdc.gov/COVID19)