



Coronavirus Disease 2019 (COVID-19)

Cases in the U.S.

Last updated on May 15, 2020

TOTAL CASES

1,412,121

27,191 New Cases*

TOTAL DEATHS

85,990

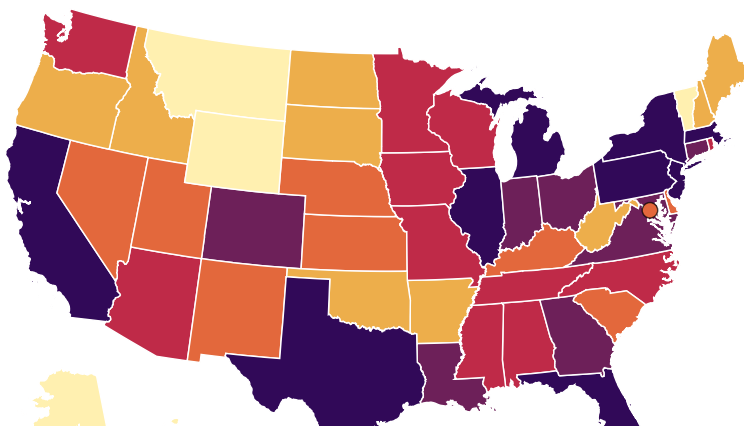
2,043 New Deaths*



Cases & Deaths by State

28 states report more than 10,000 cases of COVID-19.

This map shows COVID-19 cases and deaths reported by U.S. states, the District of Columbia, and other U.S.-affiliated jurisdictions. Hover over the map to see the number of cases and deaths reported in each jurisdiction. To go to a jurisdiction's health department website, click on the jurisdiction on the map.



Reported Cases

- 0 to 1,000
- 1,001 to 5,000
- 5,001 to 10,000
- 10,001 to 20,000
- 20,001 to 40,000
- 40,001 or more



AS GU MH FM MP PW PR VI



Jurisdictions			
Jurisdiction	Cases	Deaths	Community Transmission
<input type="radio"/> Alabama	11,338	475	Yes, widespread
<input type="radio"/> Alaska	387	10	Yes, defined area(s)
<input type="radio"/> American Samoa	0	0	N/A
<input type="radio"/> Arizona	12,674	624	Yes, widespread
<input type="radio"/> Arkansas	4,348	98	Yes, widespread
<input type="radio"/> California	73,164	3,032	Yes, widespread
<input type="radio"/> Colorado	20,762	1,090	Yes, widespread
<input type="radio"/> Connecticut	35,464	3,219	Yes, widespread
<input type="radio"/> Delaware	7,373	271	Yes, widespread
<input type="radio"/> Washington D.C.	6,736	358	Undetermined
<input type="radio"/> Florida	43,210	1,875	Yes, widespread
<input type="radio"/> Georgia	35,858	1,527	Yes, widespread
<input type="radio"/> Guam	154	5	Yes, widespread
<input type="radio"/> Hawaii	586	17	Yes, defined area(s)
<input type="radio"/> Idaho	2,351	72	Yes, widespread
<input type="radio"/> Illinois	87,937	3,928	Yes, widespread
<input type="radio"/> Indiana	26,053	1,646	Undetermined
<input type="radio"/> Iowa	13,675	318	Yes, widespread
<input type="radio"/> Kansas	7,468	164	Yes, defined area(s)
<input type="radio"/> Kentucky	7,225	328	Undetermined
<input type="radio"/> Louisiana	33,555	2,417	Yes, widespread
<input type="radio"/> Maine	1,603	69	Yes, widespread
<input type="radio"/> Marshall Islands	0	0	N/A
<input type="radio"/> Maryland	36,986	1,911	Yes, widespread
<input type="radio"/> Massachusetts	82,182	5,649	Yes, widespread
<input type="radio"/> Michigan	49,582	4,787	Yes, widespread
<input type="radio"/> Micronesia	0	0	N/A
<input type="radio"/> Minnesota	14,240	691	Yes, widespread
<input type="radio"/> Mississippi	10,801	493	Yes, widespread
<input type="radio"/> Missouri	10,316	562	Yes, widespread
<input type="radio"/> Montana	466	16	Yes, defined area(s)
<input type="radio"/> Nebraska	9,416	113	Yes, widespread
<input type="radio"/> Nevada	6,499	339	Yes, widespread
<input type="radio"/> New Hampshire	3,382	151	Yes, widespread

State	Cases	Deaths	Notes
New Jersey	142,704	9,946	Yes, widespread
New Mexico	5,503	242	Yes, widespread
New York	340,799	27,617	Yes, widespread
North Carolina	16,507	615	Yes, widespread
North Dakota	1,712	40	Yes, defined area(s)
Northern Marianas	19	2	Undetermined
Ohio	26,357	1,534	Yes, defined area(s)
Oklahoma	4,861	283	Yes, widespread
Oregon	3,479	137	Yes, widespread
Palau	0	0	N/A
Pennsylvania	59,636	4,218	Yes, defined area(s)
Puerto Rico	2,427	117	Undetermined
Rhode Island	12,016	468	Yes, widespread
South Carolina	8,189	371	Yes, widespread
South Dakota	3,792	43	Yes, defined area(s)
Tennessee	16,784	287	Yes, defined area(s)
Texas	43,851	1,216	Yes, defined area(s)
Utah	6,837	77	Yes, widespread
Vermont	933	53	Yes, widespread
Virgin Islands	69	6	Yes, defined area(s)
Virginia	28,672	977	Yes, widespread
Washington	17,773	983	Yes, widespread
West Virginia	1,434	62	Yes, defined area(s)
Wisconsin	11,275	434	Yes, widespread
Wyoming	701	7	Yes, defined area(s)

[Add U.S. Map to Your Website](#)

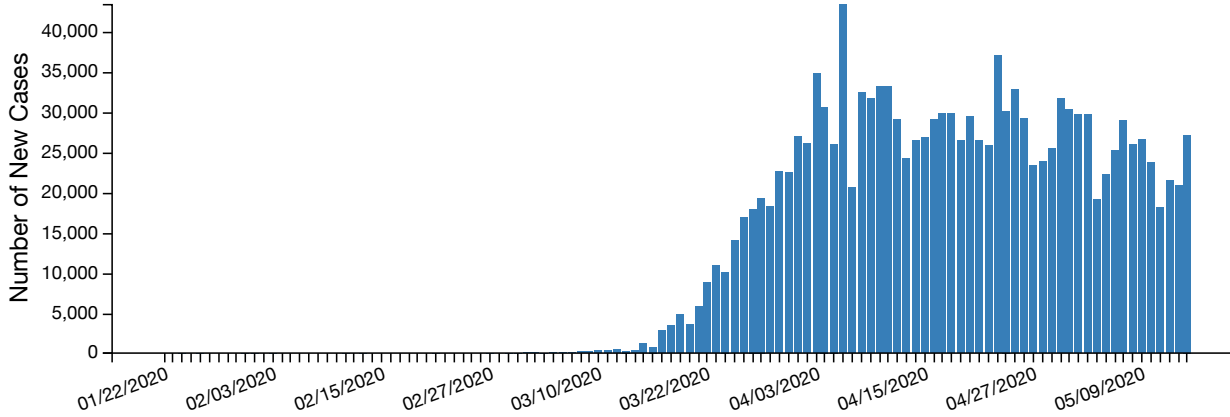
Cases & Deaths by County

Select a state to view the number of cases and deaths by county. This data is courtesy of [USAfacts.org](#)

[View County Data](#)

New Cases by Day

The following chart shows the number of new cases of COVID-19 reported by day in the U.S. since the beginning of the outbreak.



Cases [Reset](#)

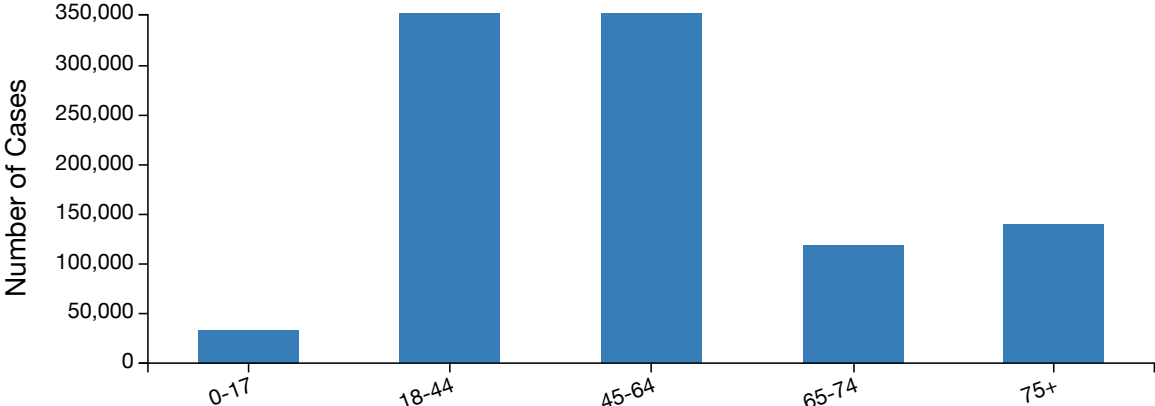
View Data by Date

	01/22/2020	01/23/2020	01/24/2020	01/25/2020	01/26/2020	01/27/2020	01/28/2020	01/29/2020	01/30/2020	01
Cases	0	0	1	0	3	0	0	0	0	01

Scroll for additional info

Cases by Age

The following chart shows the age of people with COVID-19. Data were collected from 1,112,531 people, and age was available for 1,109,884 (99.8 %) people.



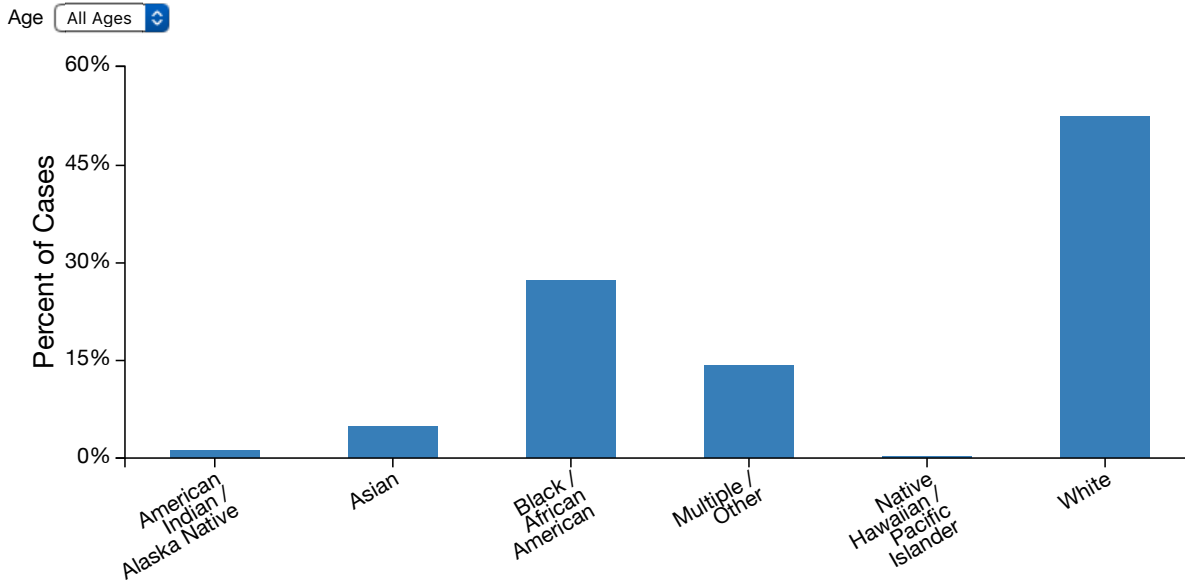
Number of Cases -

	0-17	18-44	45-64	65-74	75+
Number of Cases	33,241	426,216	392,195	118,592	139,640

Cases by Race & Age

The following chart shows the race of people with COVID-19. Data were collected from 1,097,519 people, but race was only available for 520,745 (47.4%) people.

Filtered by Age: All Ages



Percent of Cases

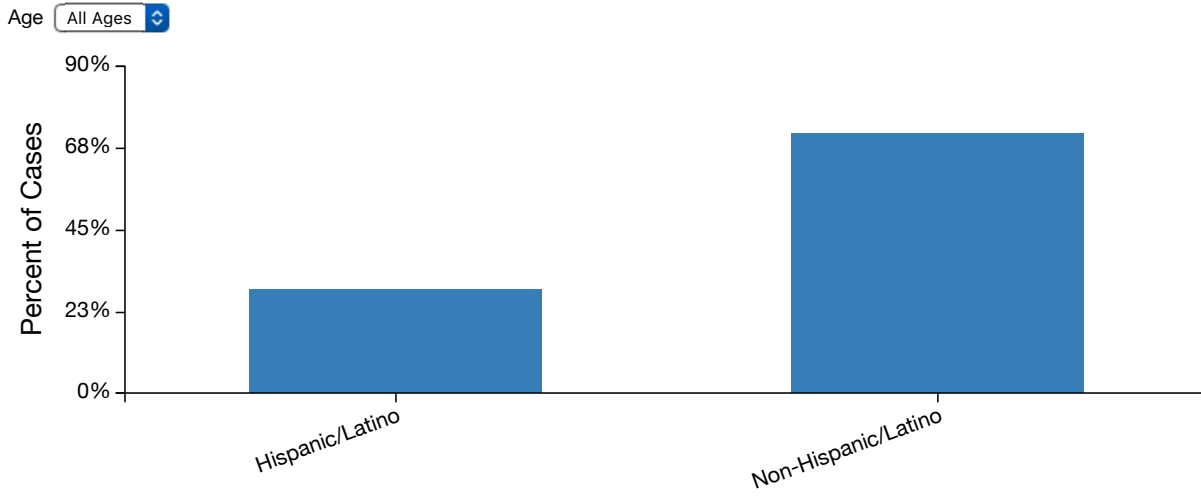
	American Indian / Alaska Native	Asian	Black / African American	Multiple / Other	Native Hawaiian / Pacific Isl
Percent of Cases	1.2%	4.8%	27.2%	14.2%	

Scroll for additional info

Cases by Ethnicity & Age

The following chart shows the ethnicity of people with COVID-19. Data were collected from 1,112,531 people, but ethnicity was only available for 490,649 (44.1%) people.

Filtered by Age: All Ages



Percent of Cases		
	Hispanic/Latino	Non-Hispanic/Latino
Percent of Cases	28.4%	71.6%

Previous U.S. COVID-19 Case Data

CDC has moved the following information to the [Previous U.S. COVID-19 Case Data](#)

- When did people in the U.S. get sick from COVID-19,
- How did people in the U.S. get COVID-19, and
- Cases of COVID-19 from Wuhan, China and the Diamond Princess cruise.

About the Data

Updated Daily



This page is updated daily based on data confirmed at 4:00pm ET the day before.

Numbers reported on Saturdays and Sundays are preliminary and not yet confirmed by state and territorial health departments. These numbers may be modified when numbers are updated on Mondays.

Number of Jurisdictions

There are currently 55 U.S.-affiliated jurisdictions reporting cases of COVID-19. This includes 50 states, District of Columbia, Guam, the Northern Mariana Islands, Puerto Rico, and the U.S Virgin Islands.

Confirmed & Probable Cases

As of April 14, 2020, CDC case counts and death counts include both confirmed and probable cases and deaths. This change was made to reflect an [interim COVID-19 position statement](#)   issued by the Council for State and Territorial Epidemiologists on April 5, 2020. The position statement included a case definition and made COVID-19 a nationally notifiable disease.

A confirmed case or death is defined by meeting confirmatory laboratory evidence for COVID-19.

A probable case or death is defined by one of the following:

- Meeting clinical criteria AND epidemiologic evidence with no confirmatory laboratory testing performed for COVID-19
- Meeting presumptive laboratory evidence AND either clinical criteria OR epidemiologic evidence
- Meeting vital records criteria with no confirmatory laboratory testing performed for COVID19

Community Transmission

State health departments report the level of community transmission (spread) of COVID-19 as one of the following:

- “Yes, widespread” – defined as widespread community transmission across several geographical areas
- “Yes, defined area(s)” – defined as distinct clusters of cases in a, or a few, defined geographical area(s)
- “Undetermined” – defined as 1 or more cases but not classified as “Yes” to community transmission
- “N/A” – defined as no cases

Case Notifications

Case notifications were received by CDC from U.S. public health jurisdictions and the [National Notifiable Diseases Surveillance System](#) (NNDSS).

Accuracy of Data

CDC does not know the exact number of COVID-19 illnesses, hospitalizations, and deaths for a variety of reasons. COVID-19 can cause mild illness, symptoms might not appear immediately, there are delays in reporting and testing, not everyone who is infected gets tested or seeks medical care, and there may be differences in how states and territories confirm numbers in their jurisdictions.

State and local public health departments are now testing and publicly reporting their cases. In the event of a discrepancy between CDC cases and cases reported by state and local public health officials, data reported by states should be considered the most up to date.

More Information

[COVIDView – A Weekly Surveillance Summary of U.S. COVID-19 Activity](#)

[Previous U.S. COVID-19 Case Data](#)

[FAQ: COVID-19 Data and Surveillance](#)

[Testing in the U.S.](#)

[World Map](#)

[Health Departments](#)