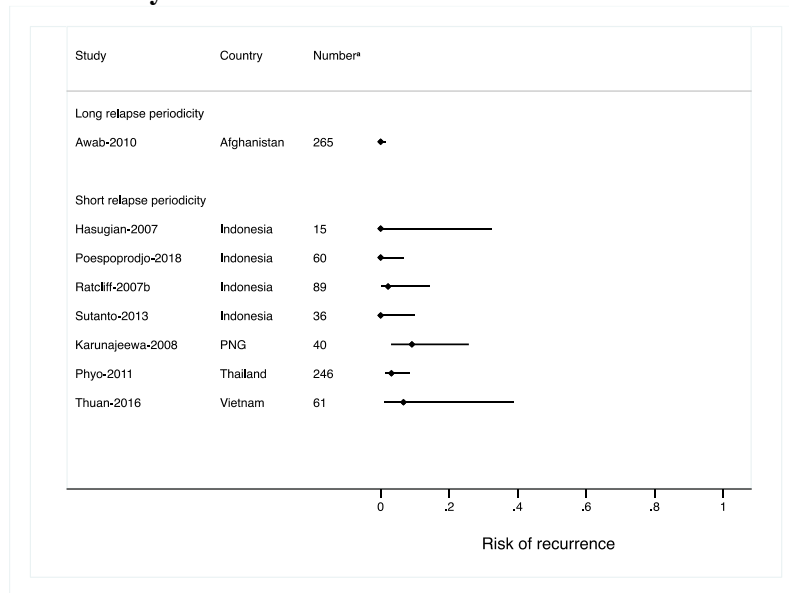
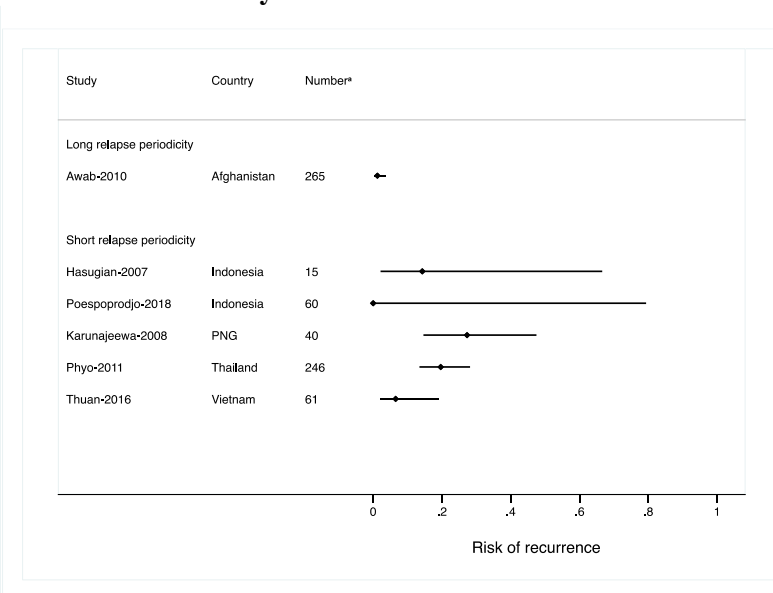


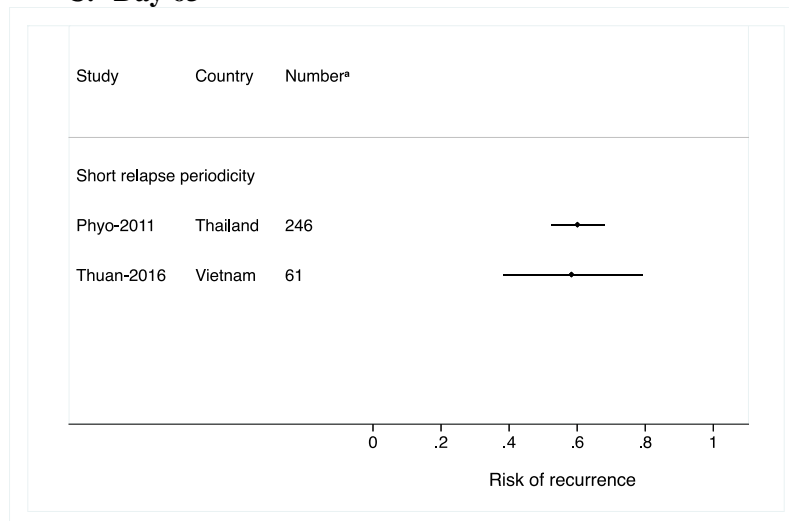
A. Day 28



B. Day 42



C. Day 63



S4 Fig. Risk of recurrence (derived from complement of Kaplan-Meier estimate) by study at days (A) 28, (B) 42 and (C) 63 in patients receiving dihydroartemisinin-piperaquine alone

^a Number refers to the total number of patients available for analysis per study for individuals treated with dihydroartemisinin-piperaquine alone. Where a Kaplan-Meier failure estimate for day X was not available due to no failures having occurred, confidence intervals were generated using Wilson's procedure for patients followed to day X. Sutanto *et al* did not have any failures, or any patients followed until day 42 or 63 [30].