

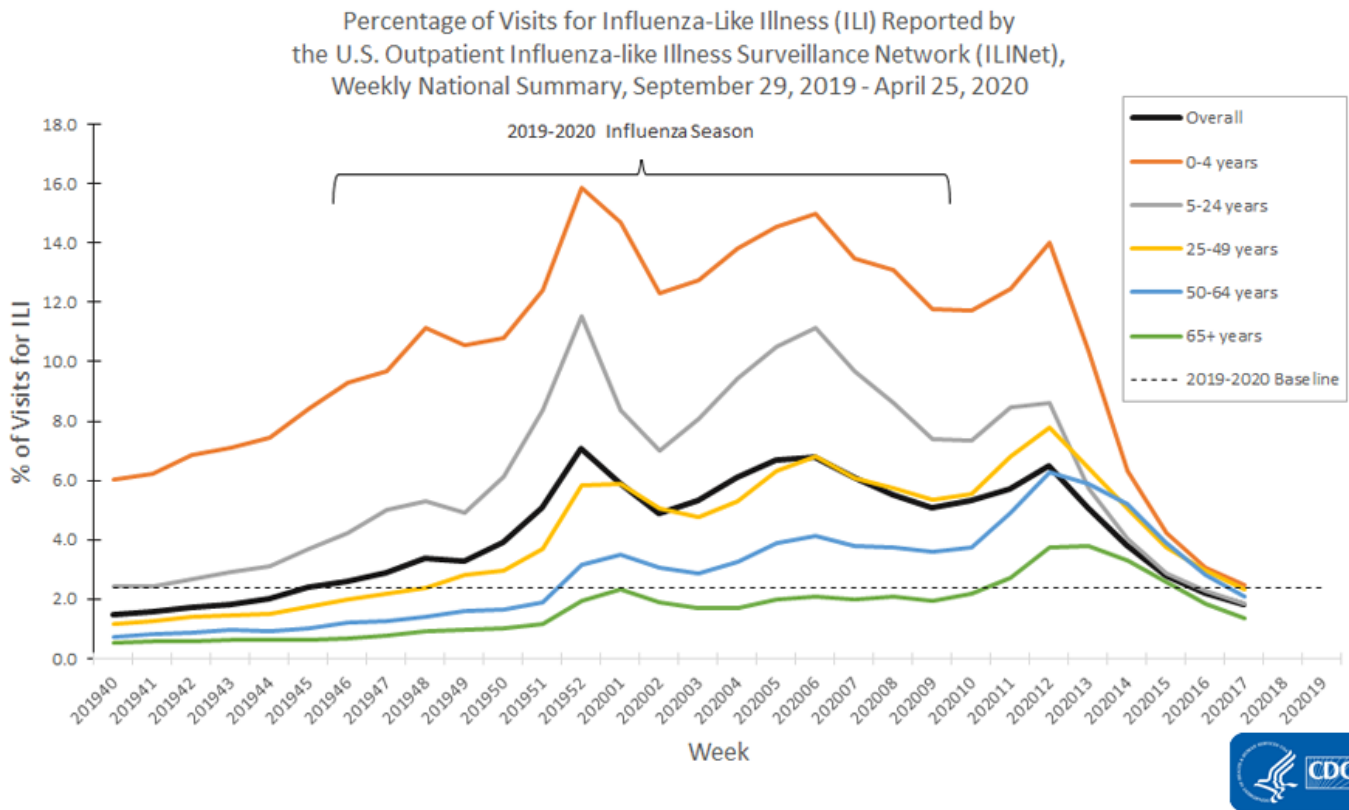
Coronavirus Disease 2019 (COVID-19)

COVIDView

A Weekly Surveillance Summary of U.S. COVID-19 Activity

Percentage of Visits for ILI by Age Group Reported by A Subset of ILINet Providers

Updated May 1, 2020



[View Larger](#)

U.S. Outpatient Influenza-like Illness Surveillance Network (ILINet):
Percentage of Visits for ILI by Age Group Reported by A Subset of ILINet Providers
September 29, 2019 – April 25, 2020
Data as of April 30, 2020
National

Week	0-4 years		5-24 years		25-49 years		50-64 years		65+ years	
	Total Visits	% ILI	Total Visits	% ILI	Total Visits	% ILI	Total Visits	% ILI	Total Visits	% ILI
201940	56,511	6.0	172,877	2.4	250,271	1.2	135,453	0.7	151,130	0.5
201941	58,900	6.2	171,817	2.4	248,234	1.3	137,075	0.8	155,136	0.6
201942	60,095	6.8	167,207	2.7	243,049	1.4	135,560	0.9	154,866	0.6
201943	61,228	7.1	176,476	2.9	250,335	1.5	139,567	0.9	158,388	0.6
201944	63,633	7.4	171,960	3.1	246,142	1.5	133,692	0.9	152,099	0.6
201945	66,353	8.4	174,266	3.7	243,709	1.7	133,263	1.0	152,172	0.6
201946	67,387	9.3	170,435	4.2	241,212	2.0	131,683	1.2	148,402	0.7
201947	73,442	9.7	177,411	5.0	253,835	2.2	139,061	1.3	154,298	0.8
201948	74,482	11.1	153,027	5.3	232,143	2.4	127,239	1.4	148,442	0.9
201949	73,402	10.6	175,342	4.9	255,947	2.8	137,089	1.6	156,155	1.0
201950	76,216	10.8	183,825	6.1	255,325	3.0	138,113	1.7	155,885	1.0
201951	81,520	12.4	183,593	8.3	252,285	3.7	135,369	1.9	155,745	1.2
201952	90,525	15.9	170,504	11.5	259,122	5.9	141,047	3.2	165,546	2.0
202001	86,829	14.7	162,965	8.3	279,963	5.9	149,120	3.5	169,822	2.4
202002	72,376	12.3	173,071	7.0	273,229	5.1	147,065	3.1	164,818	1.9
202003	73,404	12.7	183,417	8.1	266,032	4.8	143,273	2.9	159,818	1.7
202004	75,537	13.8	186,094	9.4	265,699	5.3	142,068	3.2	157,548	1.7
202005	78,816	14.6	208,539	10.5	277,528	6.3	144,784	3.9	160,096	2.0
202006	78,453	15.0	208,067	11.1	275,471	6.8	146,330	4.1	159,203	2.1
202007	75,501	13.5	196,708	9.7	273,952	6.1	148,062	3.8	162,546	2.0
202008	68,204	13.1	174,365	8.6	250,614	5.7	136,485	3.8	151,120	2.1
202009	67,915	11.8	179,907	7.4	261,277	5.4	142,026	3.6	157,868	2.0

202010	69,187	11.7	188,547	7.4	270,552	5.5	147,110	3.7	162,308	2.2
202011	66,162	12.5	184,915	8.5	273,844	6.8	143,218	4.9	149,445	2.7
202012	45,361	14.0	117,794	8.6	229,570	7.8	115,357	6.3	108,923	3.8
202013	29,107	10.4	83,139	5.7	193,714	6.4	98,986	5.9	94,259	3.8
202014	21,256	6.3	70,234	4.0	168,961	5.1	89,874	5.2	86,776	3.3
202015	19,325	4.2	66,702	2.9	156,355	3.7	87,611	3.9	88,207	2.6
202016	18,673	3.0	64,966	2.3	149,832	3.0	84,261	2.8	88,859	1.9
202017	19,772	2.5	70,299	1.8	160,060	2.3	90,796	2.1	96,418	1.4
Totals	1,869,572		4,768,469		7,258,262		3,920,637		4,326,298	

[Download Raw Data](#)  [3 KB]

Page last reviewed: May 1, 2020

Content source: [National Center for Immunization and Respiratory Diseases \(NCIRD\)](#), [Division of Viral Diseases](#)