

Figure S1. Bias in median Gaussian estimate for sample size providing 80% power broken down by method and difference between treatment and control means, 10,000 simulations, 5% level of significance. Dot-dash lines indicate unbiased estimate and dotted lines denote null value. Sample sizes are listed at the bottom of plots in the fourth column. Grey shading denotes 95% confidence interval.

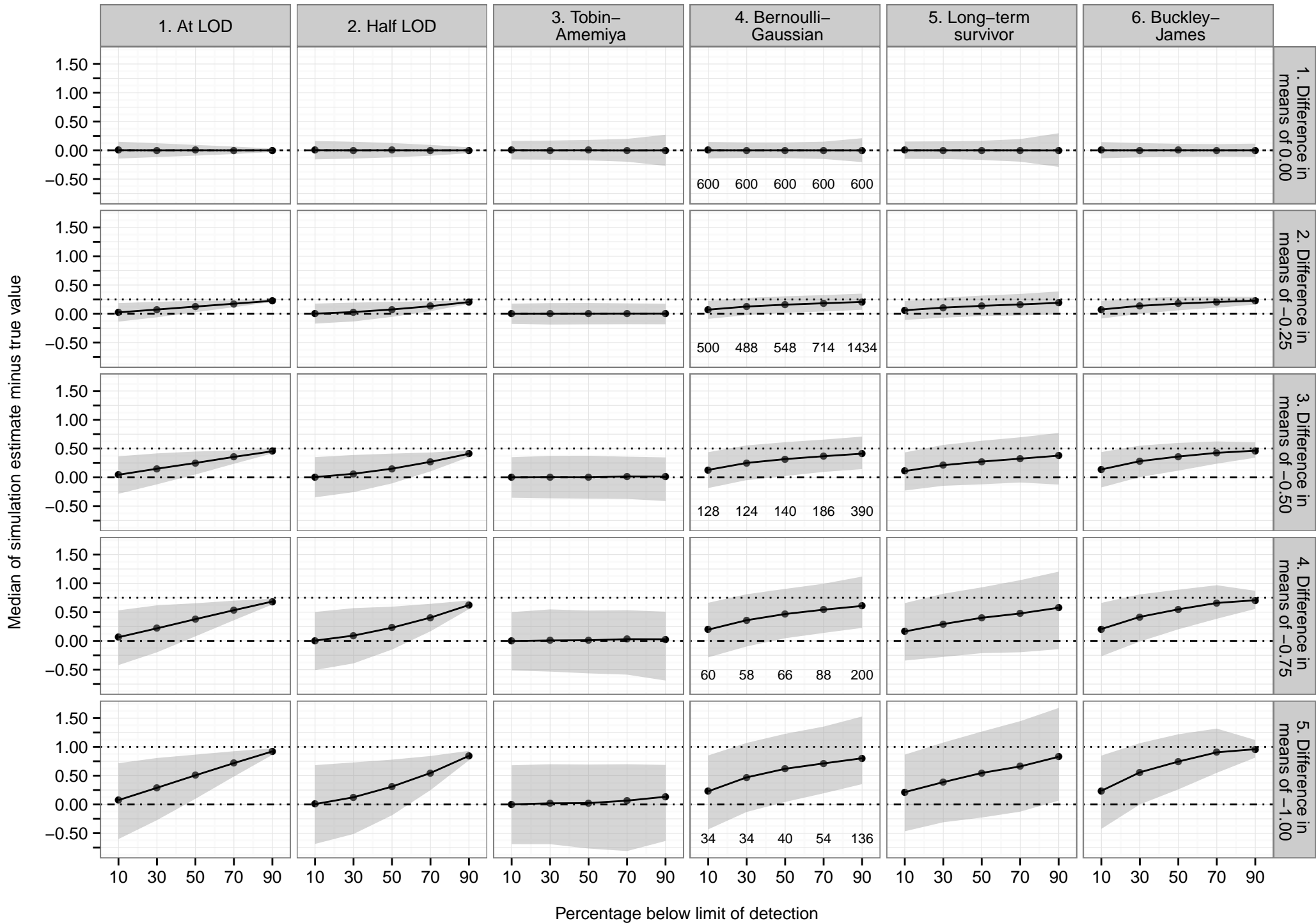


Figure S2. Bias in median Gaussian estimate for fixed sample size of 50 broken down by method and difference between treatment and control means, 10,000 simulations, 5% level of significance. Dot-dash lines indicate unbiased estimate and dotted lines denote null value. Grey shading denotes 95% confidence interval.

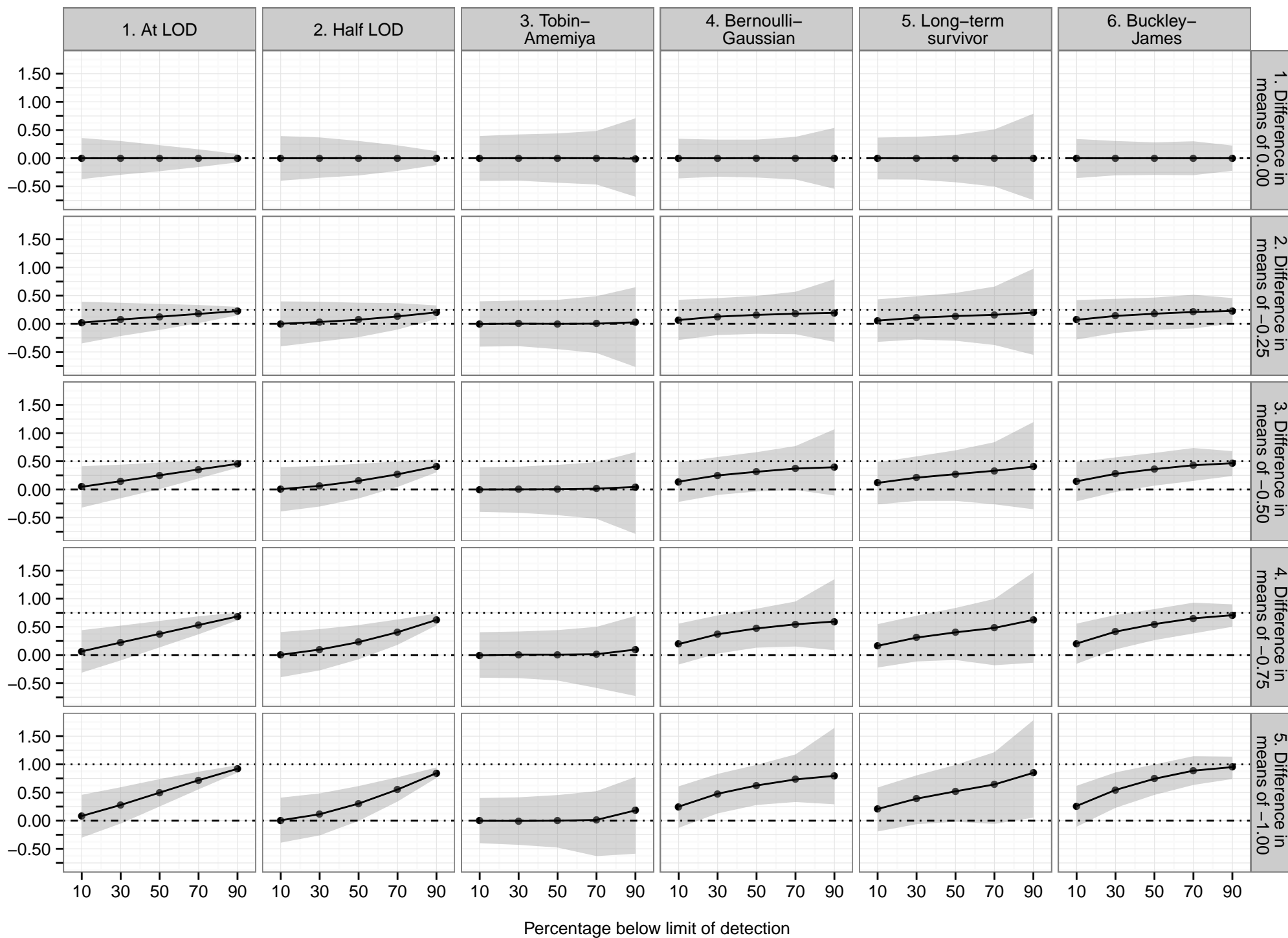


Figure S3. Bias in median Gaussian standard error estimate broken down by method, difference between treatment and control means, and sample size providing 80% power (solid lines; sample sizes for the row are listed along the bottom of plots in the fourth column) and a fixed sample size of 50 (dashed lines), 10,000 simulations, 5% level of significance. Dot-dash lines indicate unbiased estimate and dotted lines denote null value. Grey shading denotes 95% confidence interval.

— Sample size providing 80% power      - - - Sample size of 50

