



## Influenza (Flu)

# Weekly U.S. Influenza Surveillance Report



## 2018–2019 Influenza Season Week 38 ending September 21, 2019

*All data are preliminary and may change as more reports are received.*

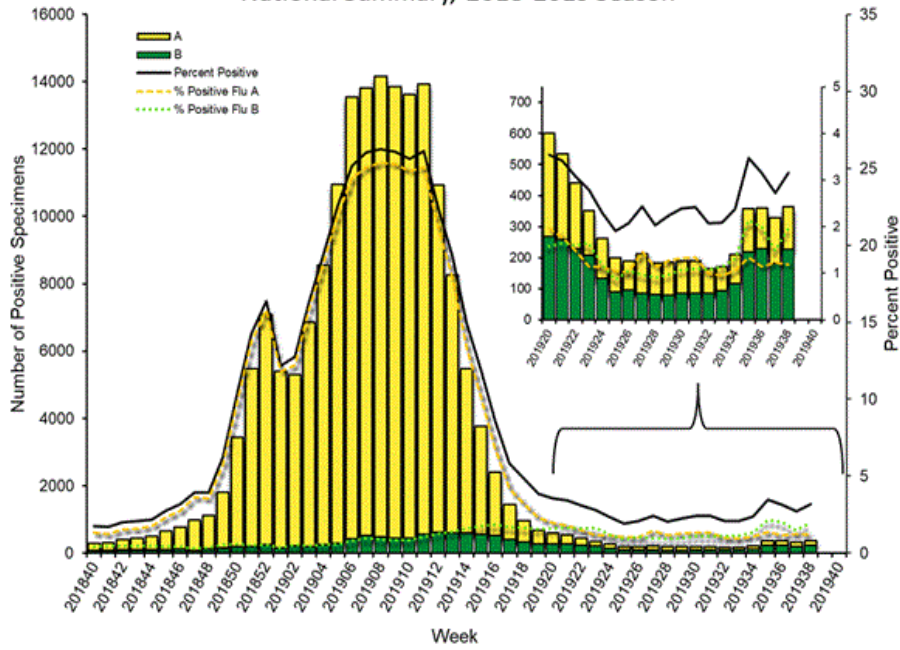
*An overview of the CDC influenza surveillance system, including methodology and detailed descriptions of each data component, is available at <http://www.cdc.gov/flu/weekly/overview.htm>.*

### U.S. Virologic Surveillance:

WHO and NREVSS collaborating laboratories, which include both public health and clinical laboratories located in all 50 states, Puerto Rico, Guam, and the District of Columbia, report to CDC the total number of respiratory specimens tested for influenza and the number positive for influenza by virus type. In addition, public health laboratories also report the influenza A subtype (H1 or H3) and influenza B lineage information of the viruses they test and the age or age group of the persons from whom the specimens were collected.

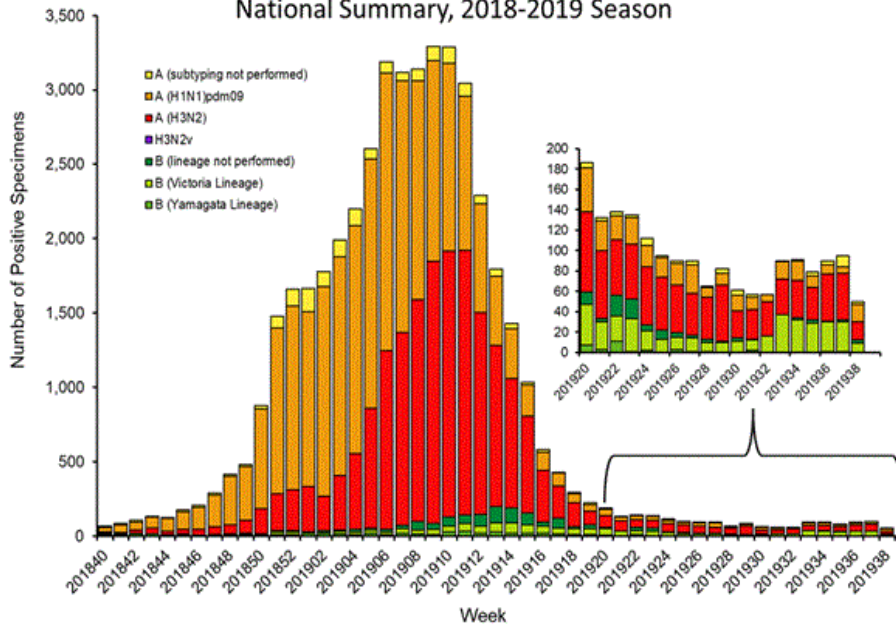
Additional virologic data, including national, regional and select state-level data, can be found at: <http://gis.cdc.gov/grasp/fluview/fluportaldashboard.html>. Age group proportions and totals by influenza subtype reported by public health laboratories can be found at: [http://gis.cdc.gov/grasp/fluview/flu\\_by\\_age\\_virus.html](http://gis.cdc.gov/grasp/fluview/flu_by_age_virus.html).

Influenza Positive Tests Reported to CDC by U.S. Clinical Laboratories, National Summary, 2018-2019 Season



[View National and Regional Level Graphs and Data](#) | [View Chart Data](#) | [View Full Screen](#) | [View PowerPoint Presentation](#)

Influenza Positive Tests Reported to CDC by U.S. Public Health Laboratories, National Summary, 2018-2019 Season

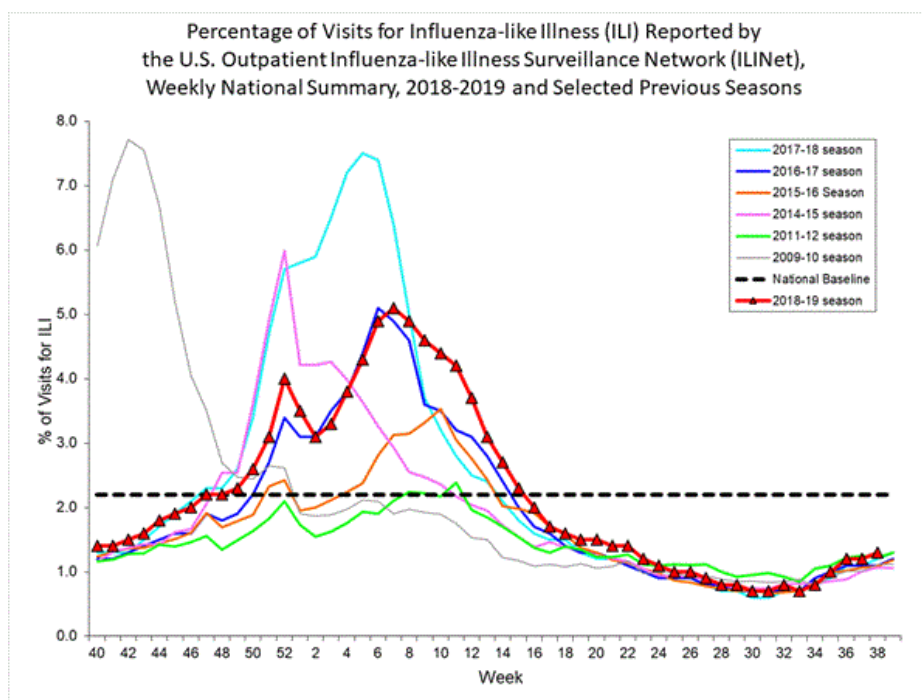


[View National and Regional Level Graphs and Data](#) | [View Chart Data](#) | [View Full Screen](#) | [View PowerPoint Presentation](#)

## Outpatient Illness Surveillance:

Nationwide during week 38, 1.3% of patient visits reported through the U.S. Outpatient Influenza-like Illness Surveillance Network (ILINet) were due to influenza-like illness (ILI). This percentage is below the national baseline of 2.2%. (ILI is defined as fever (temperature of 100°F [37.8°C] or greater) and cough and/or sore throat.)

Additional data on medically attended visits for ILI for current and past seasons and by geography (national, HHS region, or select states) are available on FluView Interactive <http://gis.cdc.gov/grasp/fluview/fluportaldashboard.html>.



[View National and Regional Level Graphs and Data](#) | [View Chart Data](#) | [View Full Screen](#) | [View PowerPoint Presentation](#)

## Influenza-Associated Hospitalizations:

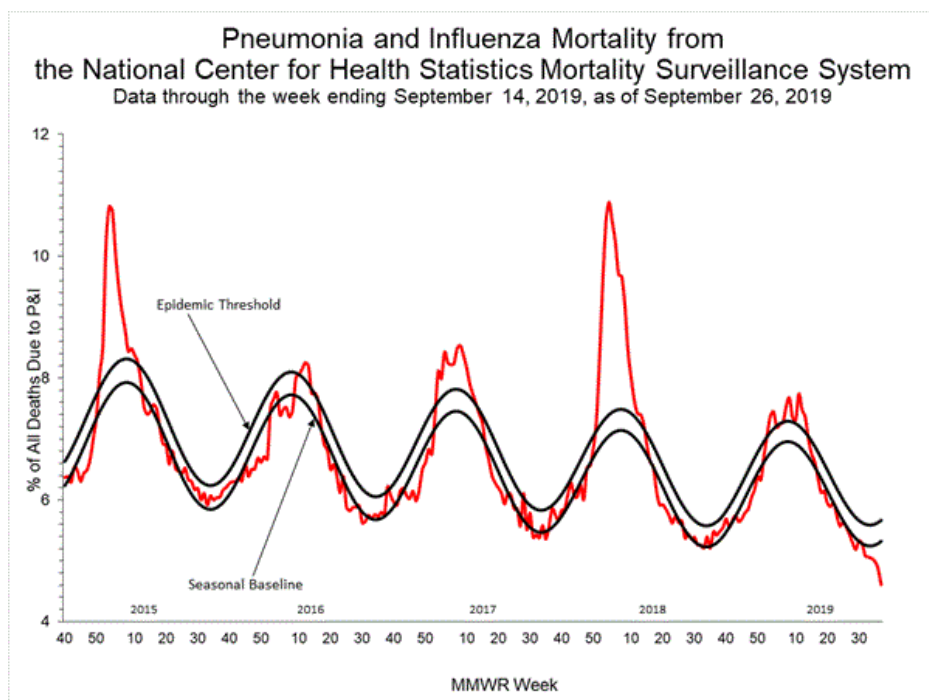
The Influenza Hospitalization Surveillance Network (FluSurv-NET) conducts all age population-based surveillance for laboratory-confirmed influenza-related hospitalizations in select counties in the Emerging Infections Program (EIP) states and Influenza Hospitalization Surveillance Project (IHSP) states.

Additional FluSurv-NET data can be found at: <http://gis.cdc.gov/GRASP/Fluview/FluHospRates.html> and <http://gis.cdc.gov/grasp/fluview/FluHospChars.html>.

## Pneumonia and Influenza (P&I) Mortality Surveillance:

Based on National Center for Health Statistics (NCHS) mortality surveillance data available on September 26, 2019, 4.6% of the deaths occurring during the week ending September 14, 2019 (week 37) were due to P&I. This percentage is below the epidemic threshold of 5.7% for week 37.

Additional pneumonia and influenza mortality data for current and past seasons and by geography (national, HHS region, or state) are available on FluView Interactive (<http://gis.cdc.gov/grasp/fluview/mortality.html>). Data displayed on the regional and state-level are aggregated by the state of residence of the decedent.



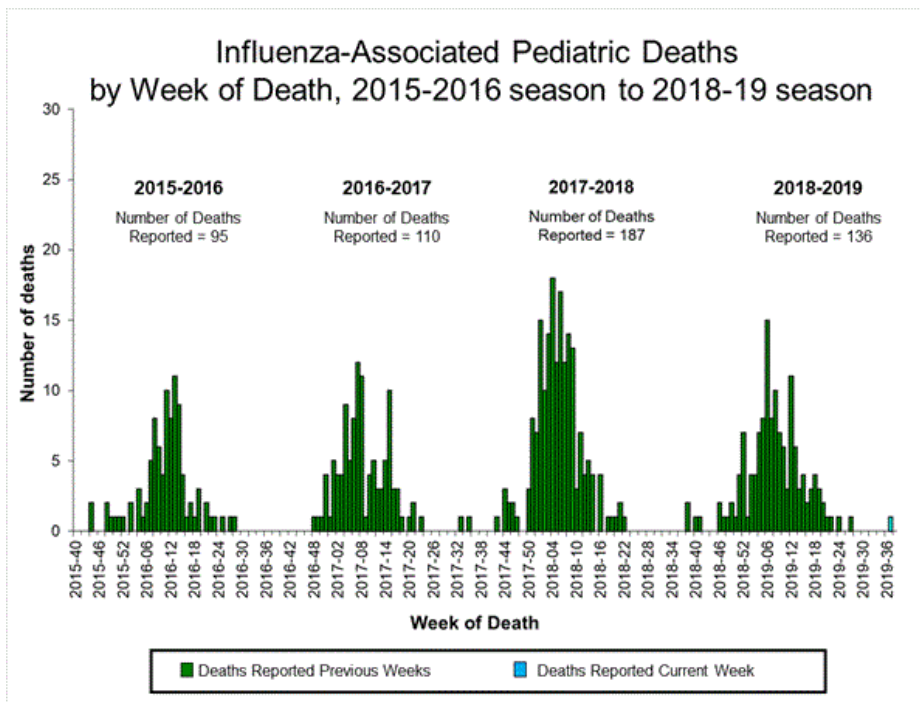
[View Regional and State Level Data](#) | [View Chart Data](#) | [View Full Screen](#) | [View PowerPoint Presentation](#)

## Influenza-Associated Pediatric Mortality:

One influenza-associated pediatric death was reported to CDC during week 38. The death was associated with an influenza A (H3) virus and occurred during week 37 (the week ending September 14, 2019).

A total of 136 influenza-associated pediatric deaths occurring during the 2018-2019 season have been reported to CDC.

Additional information on influenza-associated pediatric deaths including basic demographics, underlying conditions, bacterial co-infections, and place of death for the current and past seasons, is available on FluView Interactive (<http://gis.cdc.gov/GRASP/Fluview/PedFluDeath.html>).



[View Interactive Application](#) | [View Full Screen](#) | [View PowerPoint Presentation](#)

## Additional National and International Influenza Surveillance Information

**FluView Interactive:** FluView includes enhanced web-based interactive applications that can provide dynamic visuals of the influenza data collected and analyzed by CDC. These FluView Interactive applications allow people to create customized, visual interpretations of influenza data, as well as make comparisons across flu seasons, regions, age groups and a variety of other demographics. To access these tools, visit <http://www.cdc.gov/flu/weekly/fluviewinteractive.htm>.

**U.S. State and local influenza surveillance:** Click on a jurisdiction below to access the latest local influenza information.

- |                                |                               |                             |                                      |                               |
|--------------------------------|-------------------------------|-----------------------------|--------------------------------------|-------------------------------|
| <a href="#">Alabama</a>        | <a href="#">Alaska</a>        | <a href="#">Arizona</a>     | <a href="#">Arkansas</a>             | <a href="#">California</a>    |
| <a href="#">Colorado</a>       | <a href="#">Connecticut</a>   | <a href="#">Delaware</a>    | <a href="#">District of Columbia</a> | <a href="#">Florida</a>       |
| <a href="#">Georgia</a>        | <a href="#">Hawaii</a>        | <a href="#">Idaho</a>       | <a href="#">Illinois</a>             | <a href="#">Indiana</a>       |
| <a href="#">Iowa</a>           | <a href="#">Kansas</a>        | <a href="#">Kentucky</a>    | <a href="#">Louisiana</a>            | <a href="#">Maine</a>         |
| <a href="#">Maryland</a>       | <a href="#">Massachusetts</a> | <a href="#">Michigan</a>    | <a href="#">Minnesota</a>            | <a href="#">Mississippi</a>   |
| <a href="#">Missouri</a>       | <a href="#">Montana</a>       | <a href="#">Nebraska</a>    | <a href="#">Nevada</a>               | <a href="#">New Hampshire</a> |
| <a href="#">New Jersey</a>     | <a href="#">New Mexico</a>    | <a href="#">New York</a>    | <a href="#">North Carolina</a>       | <a href="#">North Dakota</a>  |
| <a href="#">Ohio</a>           | <a href="#">Oklahoma</a>      | <a href="#">Oregon</a>      | <a href="#">Pennsylvania</a>         | <a href="#">Rhode Island</a>  |
| <a href="#">South Carolina</a> | <a href="#">South Dakota</a>  | <a href="#">Tennessee</a>   | <a href="#">Texas</a>                | <a href="#">Utah</a>          |
| <a href="#">Vermont</a>        | <a href="#">Virginia</a>      | <a href="#">Washington</a>  | <a href="#">West Virginia</a>        | <a href="#">Wisconsin</a>     |
| <a href="#">Wyoming</a>        | <a href="#">New York City</a> | <a href="#">Puerto Rico</a> | <a href="#">Virgin Islands</a>       |                               |

**World Health Organization:** Additional influenza surveillance information from participating WHO member nations is available through [FluNet](#) and the [Global Epidemiology Reports](#).

**WHO Collaborating Centers for Influenza** located in [Australia](#), [China](#), [Japan](#), the [United Kingdom](#), and the [United States](#) (CDC in Atlanta, Georgia).

**Europe:** For the most recent influenza surveillance information from Europe, please see WHO/Europe and the European Centre for Disease Prevention and Control at <http://www.flunewseurope.org/>.

**Public Health Agency of Canada:** The most up-to-date influenza information from Canada is available at <http://www.phac-aspc.gc.ca/fluwatch/>

**Public Health England:** The most up-to-date influenza information from the United Kingdom is available at <https://www.gov.uk/government/statistics/weekly-national-flu-reports>

**Any links provided to non-Federal organizations are provided solely as a service to our users. These links do not constitute an endorsement of these organizations or their programs by CDC or the Federal Government, and none should be inferred. CDC is not responsible for the content of the individual organization web pages found at these links.**

An overview of the CDC influenza surveillance system, including methodology and detailed descriptions of each data component, is available at: <http://www.cdc.gov/flu/weekly/overview.htm>.

Page last reviewed: July 5, 2019

Content source: Centers for Disease Control and Prevention, National Center for Immunization and Respiratory Diseases (NCIRD)

-----  
**Error processing SSI file**