

2009-2010 Influenza Season Week 15 ending April 17, 2010

All data are preliminary and may change as more reports are received.

- Synopsis:** During week 15 (April 11-17, 2010), influenza activity decreased in the U.S.
- 37 (2.1%) specimens tested by U.S. World Health Organization (WHO) and National Respiratory and Enteric Virus Surveillance System (NREVSS) collaborating laboratories and reported to CDC/Influenza Division were positive for influenza.
 - All 20 subtyped influenza A viruses were 2009 influenza A (H1N1).
 - The proportion of deaths attributed to pneumonia and influenza (P&I) was at the epidemic threshold.
 - No influenza-associated pediatric deaths were reported.
 - The proportion of outpatient visits for influenza-like illness (ILI) was 1.1%, which is below the national baseline of 2.3%. All 10 regions reported ILI below region-specific baseline levels.
 - No states reported widespread or regional influenza activity. Four states reported local influenza activity. The District of Columbia, Guam, Puerto Rico, and 31 states reported sporadic influenza activity. Fourteen states reported no influenza activity, and the U.S. Virgin Islands and one state did not report.

National and Regional Summary of Select Surveillance Components

HHS Surveillance Regions**	Data for current week			Data cumulative since August 30, 2009 (Week 35)*						
	Out-patient ILI†	% positive for flu‡	Number of jurisdictions reporting regional or widespread activity§	A (H1)	A (H3)	2009 A (H1N1)	A (unable to subtype)¶	A (Subtyping not performed)	B	Pediatric Deaths
Nation	Normal	2.1%	0 of 54	34	66	66,682	288	22,439	297	272
Region 1	Normal	0.7%	0 of 6	4	5	3,404	14	503	12	6
Region 2	Normal	0.4%	0 of 4	8	6	1,809	0	2,404	14	19
Region 3	Normal	1.4%	0 of 6	3	12	10,716	48	1,453	18	14
Region 4	Normal	7.7%	0 of 8	0	7	9,855	95	4,703	90	52
Region 5	Normal	3.8%	0 of 6	8	25	9,503	46	1,580	19	36
Region 6	Normal	2.9%	0 of 5	2	3	5,188	19	5,409	56	73
Region 7	Normal	6.0%	0 of 4	3	1	3,300	3	847	9	8
Region 8	Normal	1.7%	0 of 6	4	2	9,870	0	3,945	56	16
Region 9	Normal	1.8%	0 of 5	0	4	8,348	49	1,247	19	38
Region 10	Normal	1.2%	0 of 4	2	1	4,689	14	348	4	10

*Influenza season officially begins each year at week 40. This season data from week 35 will be included to show the trend of influenza activity before the official start of the 2009-10 influenza season.

**HHS regions (Region 1 CT, ME, MA, NH, RI, VT; Region 2: NJ, NY, Puerto Rico, US Virgin Islands; Region 3: DE, DC, MD, PA, VA, WV; Region 4: AL, FL, GA, KY, MS, NC, SC, TN; Region 5: IL, IN, MI, MN, OH, WI; Region 6: AR, LA, NM, OK, TX; Region 7: IA, KS, MO, NE; Region 8: CO, MT, ND, SD, UT, WY; Region 9: AZ, CA, Guam, HI, NV; and Region 10: AK, ID, OR, WA). Use of the national baseline for regional data or regional baselines for state data is not appropriate.

† Elevated means the % of visits for ILI is at or above the national or region-specific baseline.

‡ National data are for current week; regional data are for the most recent three weeks.

§ Includes all 50 states, the District of Columbia, Guam, Puerto Rico, and U.S. Virgin Islands.

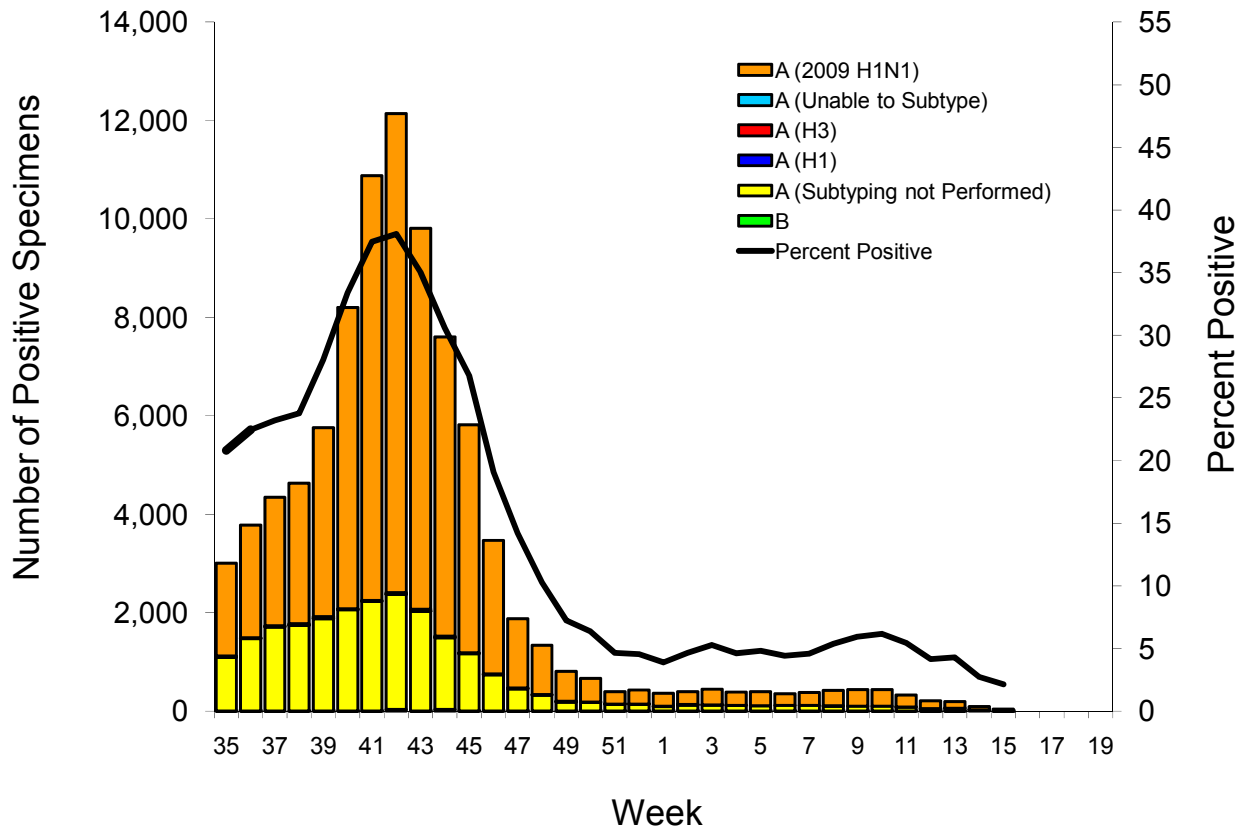
¶ Subtyping results for the majority of specimens in this category were inconclusive because of low virus titers.

U.S. Virologic Surveillance: WHO and NREVSS collaborating laboratories, located in all 50 states and Washington, D.C., report to CDC the number of respiratory specimens tested for influenza and the number positive by influenza type and subtype. The results of tests performed during the current week are summarized in the table below.

	Week 15
No. of specimens tested	1,749
No. of positive specimens (%)	37 (2.7%)
Positive specimens by type/subtype	
Influenza A	35 (94.6%)
A (2009 H1N1)	20 (57.1%)
A (subtyping not performed)	15 (42.9%)
A (unable to subtype)	0 (0.0%)
A (H3)	0 (0.0%)
A (H1)	0 (0.0%)
Influenza B	2 (5.4%)

During week 15, all 20 subtyped influenza A viruses reported to CDC were 2009 influenza A (H1N1) viruses.

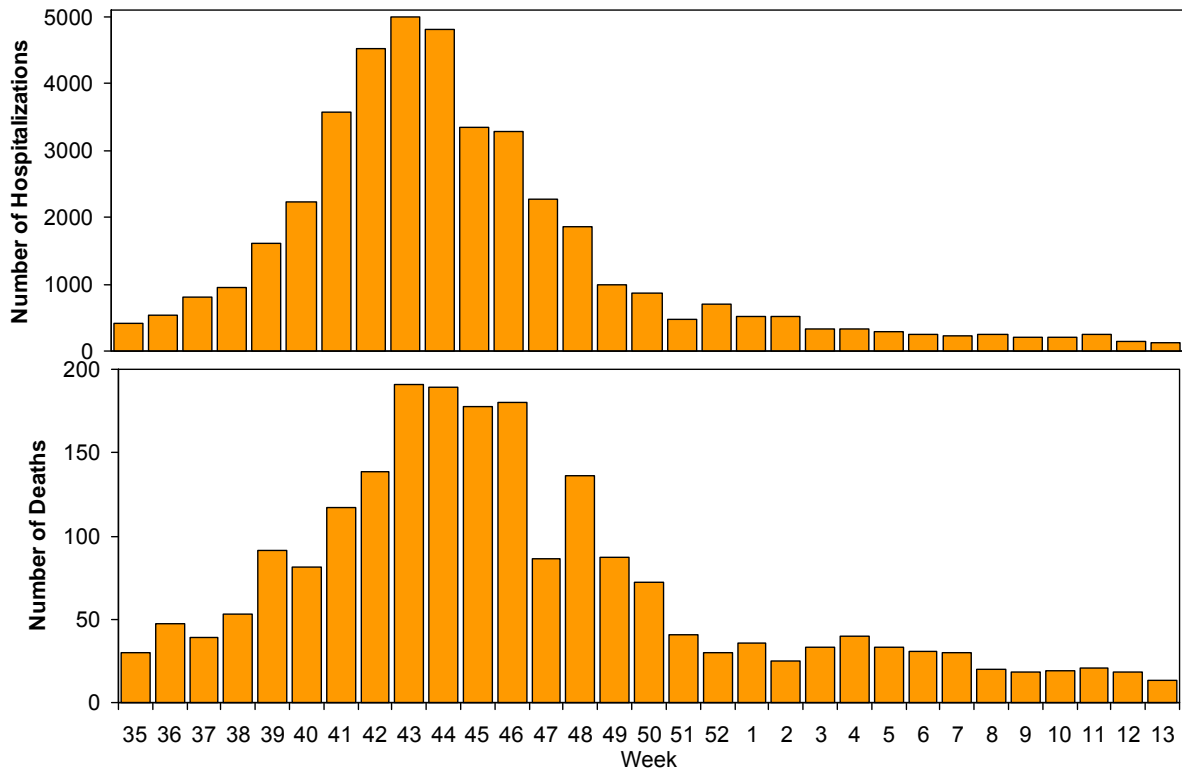
Influenza Positive Tests Reported to CDC by U.S. WHO/NREVSS Collaborating Laboratories, National Summary, August 30, 2009-April 17, 2010



Pneumonia and Influenza Hospitalization and Death Tracking: The Aggregate Hospitalization and Death Reporting Activity (AHDRA) system was implemented on August 30, 2009, and replaced the weekly report of laboratory confirmed 2009 H1N1-related hospitalizations and deaths that began in April 2009. Jurisdictions report to CDC the number of hospitalizations and deaths resulting from all types or subtypes of influenza, not just those associated with 2009 H1N1. Counts were reset to zero on August 30, 2009. From August 30, 2009 – April 3, 2010, 41,883 laboratory-confirmed influenza-associated hospitalizations and 2,125 laboratory-confirmed influenza-associated deaths were reported to CDC.

Reporting of influenza-associated hospitalizations and deaths through AHDRA was discontinued during the week ending April 3, 2010 (week 13). CDC will continue to use its traditional influenza surveillance systems to track the remainder of the 2009-10 season.

Weekly Laboratory-Confirmed Influenza-Associated Hospitalizations and Deaths Reported to AHDRA, National Summary, August 30, 2009 – April 3, 2010



Antigenic Characterization: CDC has antigenically characterized two seasonal influenza A (H1N1), 13 influenza A (H3N2), 24 influenza B, and 1,723 2009 influenza A (H1N1) viruses collected since September 1, 2009.

Both seasonal influenza A (H1N1) viruses tested were related to the influenza A (H1N1) component of the 2009-10 Northern Hemisphere influenza vaccine (A/Brisbane/59/2007).

The 13 influenza A (H3N2) viruses tested showed reduced titers with antisera produced against A/Brisbane/10/2007, the 2009-2010 Northern Hemisphere influenza A (H3N2) vaccine component, and were antigenically related to A/Perth/16/2009, the WHO recommended influenza A (H3N2) component of the 2010 Southern Hemisphere and 2010-11 Northern Hemisphere vaccine formulations.

Influenza B viruses currently circulating globally can be divided into two distinct lineages represented by the B/Yamagata/16/88 and B/Victoria/02/87 viruses. The influenza B component of the 2009-10 and 2010-11 Northern Hemisphere vaccines belongs to the B/Victoria lineage, which currently predominates in most countries where circulation of influenza B has been reported. Twenty-three (95.8%) of the 24 influenza B viruses from the U.S. tested belong to the B/Victoria lineage and are related to the influenza vaccine component for the 2009-10 and 2010-11 Northern Hemisphere influenza B vaccine strain (B/Brisbane/60/2008). One (4.2%) virus tested belongs to the B/Yamagata lineage.

One thousand seven hundred seventeen (99.7%) of 1,723 2009 influenza A (H1N1) viruses tested are related to the A/California/07/2009 (H1N1) reference virus selected by WHO as the 2009 H1N1 vaccine virus, and as a component in the 2010-11 Northern Hemisphere vaccine. Six viruses (0.3%) tested showed reduced titers with antiserum produced against A/California/07/2009.

Annual influenza vaccination is expected to provide the best protection against those virus strains that are related to the vaccine strains, but limited to no protection may be expected when the vaccine and circulating virus strains are so different as to be from different lineages. Antigenic characterization of 2009 influenza A (H1N1) viruses indicates that these viruses are only distantly related antigenically and genetically to seasonal influenza A (H1N1) viruses, suggesting that little to no protection would be expected from vaccination with seasonal influenza vaccine.

Composition of the 2010-11 Influenza Vaccine: WHO has recommended vaccine strains for the 2010-11 Northern Hemisphere trivalent influenza vaccine, and FDA has made the same recommendations for the U.S. influenza vaccine. Both agencies recommend that the vaccine contain A/California/7/2009-like (2009 H1N1), A/Perth/16/2009-like (H3N2), and B/Brisbane/60/2008-like (B/Victoria lineage) viruses. A seasonal influenza A (H1N1) component is not included in the 2010-11 formulation, and the A (H3N2) component has been changed from the 2009-10 Northern Hemisphere vaccine formulation. This recommendation was based on surveillance data related to epidemiology and antigenic characteristics, serological responses to 2009-10 trivalent seasonal and 2009 H1N1 monovalent vaccines, and the availability of candidate strains and reagents.

Antiviral Resistance: Since September 1, 2009, one seasonal influenza A (H1N1), 13 influenza A (H3N2), 23 influenza B, and 1,705 2009 influenza A (H1N1) virus isolates have been tested for resistance to the neuraminidase inhibitors (oseltamivir and zanamivir), and 2,811 2009 influenza A (H1N1) original clinical samples were tested for a single known mutation in the virus that confers oseltamivir resistance. In addition, one seasonal influenza A (H1N1), 13 influenza A (H3N2), and 1,705 2009 influenza A (H1N1) virus isolates have been tested for resistance to the adamantanes (amantadine and rimantadine). The results of antiviral resistance testing performed on these viruses are summarized in the table below. Additional laboratories perform antiviral testing and report their results to CDC, and positive results from that testing are included in the footnote.

Antiviral Resistance Testing Results on Samples Collected Since September 1, 2009.

	Viruses tested (n)	Resistant Viruses, Number (%)	Viruses tested (n)	Resistant Viruses, Number (%)	Isolates tested (n)	Resistant Viruses, Number (%)
		Oseltamivir		Zanamivir		Adamantanes
Seasonal Influenza A (H1N1)	1	1 (100.0)	0	0 (0)	1	0 (0)
Influenza A (H3N2)	13	0 (0)	0	0 (0)	13	13 (100.0)
Influenza B	23	0 (0)	0	0 (0)	N/A*	N/A*
2009 Influenza A (H1N1)	4,516	52 ^{†‡} (1.2)	1,705	0 (0)	1,705	1,701 (99.8)

*The adamantanes (amantadine and rimantadine) are not effective against influenza B viruses.

[†]Two screening tools were used to determine oseltamivir resistance: sequence analysis of viral genes and a neuraminidase inhibition assay.

[‡]Additional laboratories perform antiviral resistance testing and report their results to CDC. Three additional oseltamivir resistant 2009 influenza A (H1N1) virus has been identified by these laboratories since September 1, 2009, bringing the total number to 55.

All 20 subtyped influenza A virus reported during week 15 were 2009 influenza A (H1N1) viruses, and nearly all 2009 influenza A (H1N1) viruses tested since April 2009 have been resistant to the adamantanes (amantadine and rimantadine).

Antiviral treatment with oseltamivir or zanamivir is recommended for all patients with confirmed or suspected influenza virus infection who are hospitalized, are at higher risk for influenza complications, or who have lower respiratory tract or progressive disease. Additional information on antiviral recommendations for treatment and chemoprophylaxis of influenza virus infection is available at <http://www.cdc.gov/H1N1flu/recommendations.htm>.

2009 influenza A (H1N1) viruses were tested for oseltamivir resistance by a neuraminidase inhibition assay and/or detection of genetic sequence mutation, depending on the type of specimen tested. Original clinical samples were examined for a single known mutation in the virus that confers oseltamivir resistance in currently circulating seasonal influenza A (H1N1) viruses, while influenza virus isolates were tested using a neuraminidase inhibition assay that determines the presence or absence of neuraminidase inhibitor resistance, followed by neuraminidase gene sequence analysis of resistant viruses.

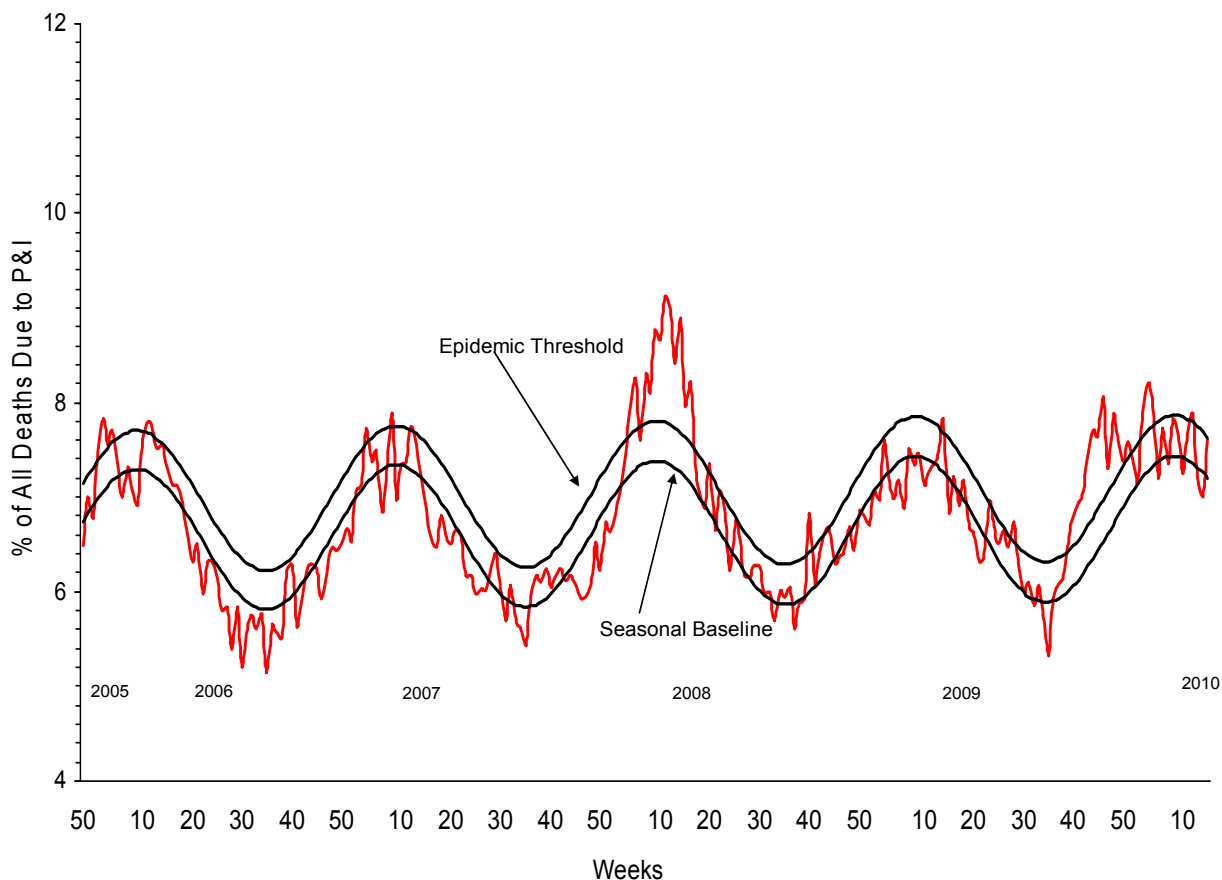
The majority of 2009 influenza A (H1N1) viruses are susceptible to the neuraminidase inhibitor antiviral medication oseltamivir; however, rare sporadic cases of oseltamivir resistant 2009 influenza A (H1N1) viruses have been detected worldwide. A total of 64 cases of oseltamivir resistant 2009 influenza A (H1N1) viruses have been identified in the United States since April 2009. No new cases have been identified since last week. Fifty-five of these specimens were collected after September 1, 2009. The proportion of oseltamivir-resistant 2009 H1N1 viruses does

not represent the prevalence of oseltamivir-resistant 2009 H1N1 in the United States. Most cases were tested because drug resistance was suspected. All tested viruses retained their sensitivity to the neuraminidase inhibitor zanamivir. Of the 64 total cases identified since April 2009, 52 patients had documented exposure to oseltamivir through either treatment or chemoprophylaxis, three patients had no drug exposure but possible exposure to a person with oseltamivir resistant 2009 H1N1, five patients are under investigation to determine exposure to oseltamivir, three patients had neither documented oseltamivir exposure nor exposure to a person with oseltamivir resistant 2009 H1N1, and in one patient, exposure cannot be determined. Occasional development of oseltamivir resistance during treatment or prophylaxis is not unexpected. Enhanced surveillance, an increased availability of testing performed at CDC, and an increasing number of public health and other clinical laboratories performing antiviral resistance testing increase the number of cases of oseltamivir resistant 2009 influenza A (H1N1) viruses detected. All cases are investigated to assess the spread of resistant strains in the community.

To prevent the spread of antiviral resistant virus strains, CDC reminds clinicians and the public of the need to continue hand and cough hygiene measures for the duration of any symptoms of influenza, even while taking antiviral medications (<http://www.cdc.gov/mmwr/preview/mmwrhtml/mm5832a3.htm>).

Pneumonia and Influenza (P&I) Mortality Surveillance: During week 15, 7.6% of all deaths reported through the 122-Cities Mortality Reporting System were due to P&I. This percentage was at the epidemic threshold of 7.6% for week 15.

Pneumonia and Influenza Mortality for 122 U.S. Cities
Week ending 4/17/2010



Influenza-Associated Pediatric Mortality: No influenza-associated pediatric deaths were reported to CDC during week 15.

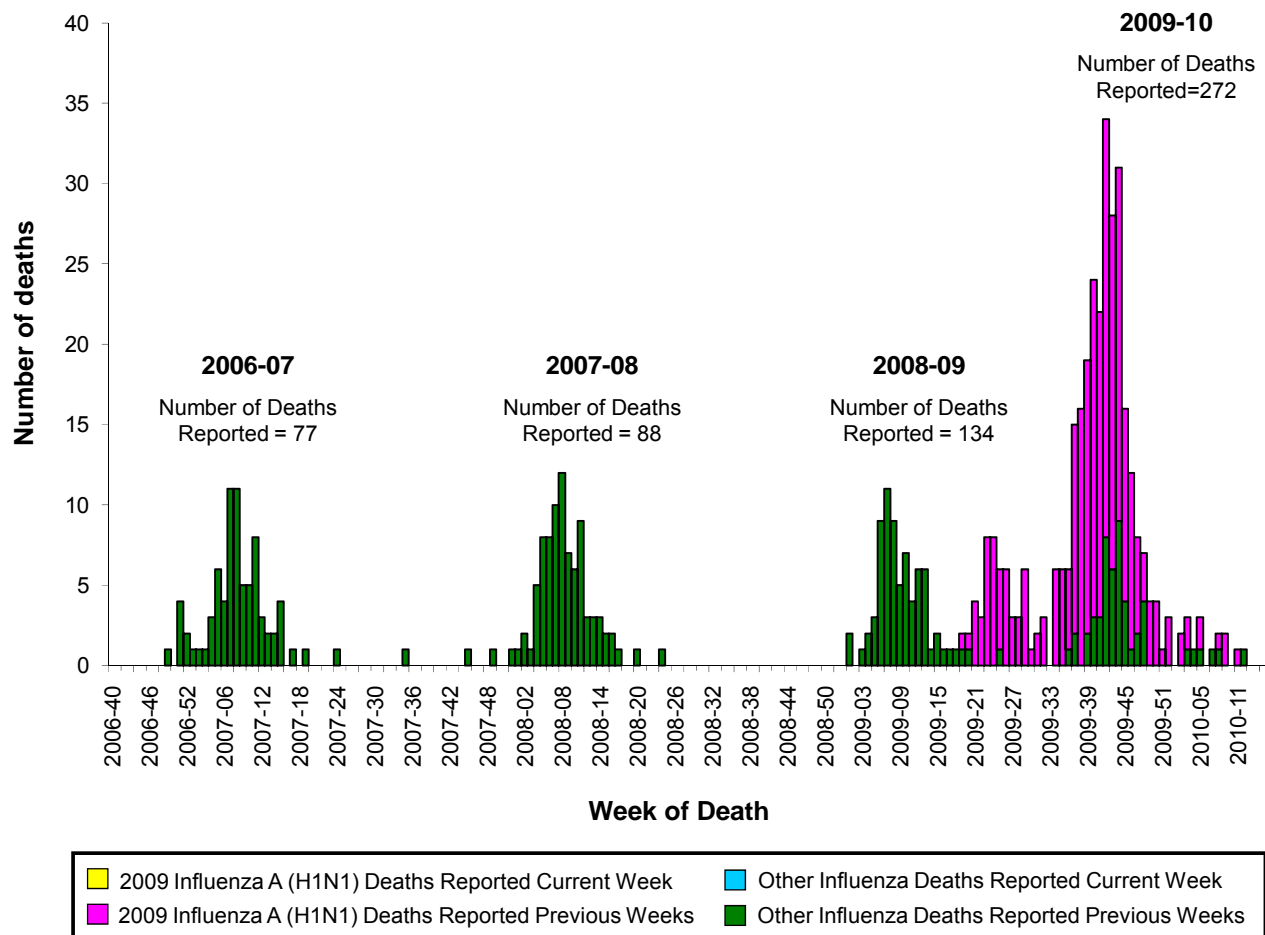
Since August 30, 2009, CDC has received 272 reports of influenza-associated pediatric deaths that occurred during the current influenza season (48 deaths in children less than 2 years old, 30 deaths in children 2-4 years old, 102 deaths in children 5-11 years old, and 92 deaths in children 12-17 years old). Two hundred twenty-one (81%) of the 272 deaths were due to 2009 influenza A (H1N1) virus infections, 50 were associated with an influenza A virus for which the subtype is undetermined, and one was associated with an influenza B virus infection. A total of 281 deaths in children associated with 2009 influenza A (H1N1) virus infection have been reported to CDC.

Among the 272 deaths in children, 145 children had specimens collected for bacterial culture from normally sterile sites and 50 (34.5%) of the 145 were positive; *Streptococcus pneumoniae* was identified in 11 (22.0%) of the 50 children, and *Staphylococcus aureus* was identified in 15 (30.0%) of the 50 children. Four *S. aureus* isolates were sensitive to methicillin, ten were methicillin resistant, and one did not have sensitivity testing performed. Thirty-three (66.0%) of the 50 children with bacterial coinfections were five years of age or older, and 17 (34.0%) of the 50 children were 12 years of age or older.

Laboratory-Confirmed Influenza-Associated Pediatric Deaths by Date and Type/Subtype of Influenza.

Date	2009 H1N1 Influenza	Influenza A-Subtype Unknown	Seasonal Influenza	Total
Number of Deaths REPORTED for Current Week – Week 15 (Week ending April 17, 2010)	0	0	0	0
Number of Deaths OCCURRED since August 30, 2009	221	50	1	272
Number of Deaths OCCURRED since April 26, 2009	281	53	3	337

Number of Influenza-Associated Pediatric Deaths by Week of Death: 2006-07 season to present

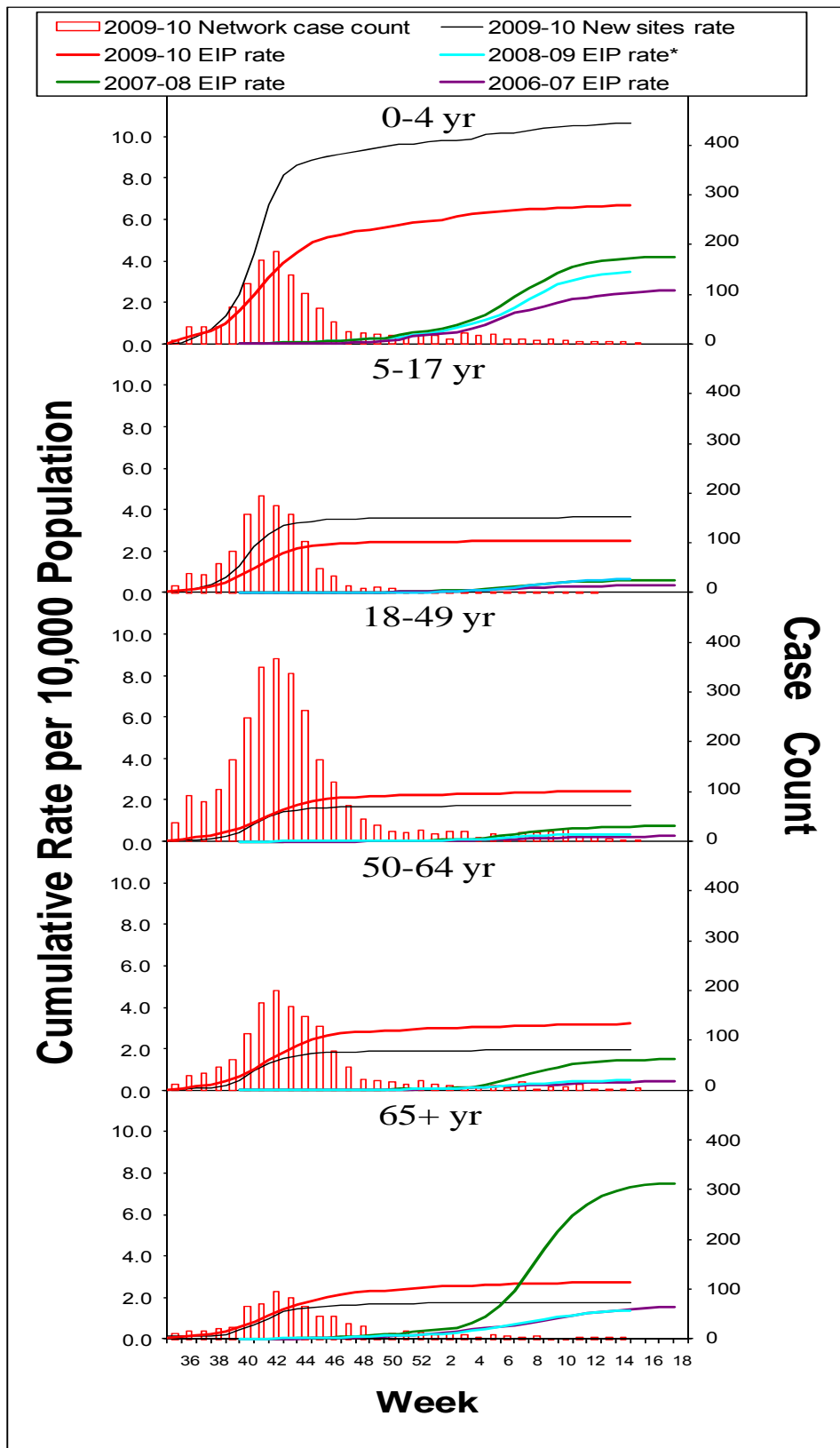


Influenza-Associated Hospitalizations: Laboratory-confirmed influenza-associated hospitalizations are monitored using a population-based surveillance network that includes the 10 Emerging Infections Program (EIP) sites (CA, CO, CT, GA, MD, MN, NM, NY, OR and TN) and six new sites (IA, ID, MI, ND, OK and SD).

During September 1, 2009 – April 17, 2010, the following preliminary laboratory-confirmed overall influenza associated hospitalization rates were reported by EIP and the new sites (*rates include influenza A, influenza B, and 2009 influenza A (H1N1)*):

Rates [EIP (new sites)] for children aged 0-4 years and 5-17 years were 6.7 (10.7) and 2.5 (3.6) per 10,000, respectively. Rates [EIP (new sites)] for adults aged 18-49 years, 50-64 years, and ≥ 65 years were 2.4 (1.7), 3.2 (2.0) and 2.8 (1.8) per 10,000, respectively.

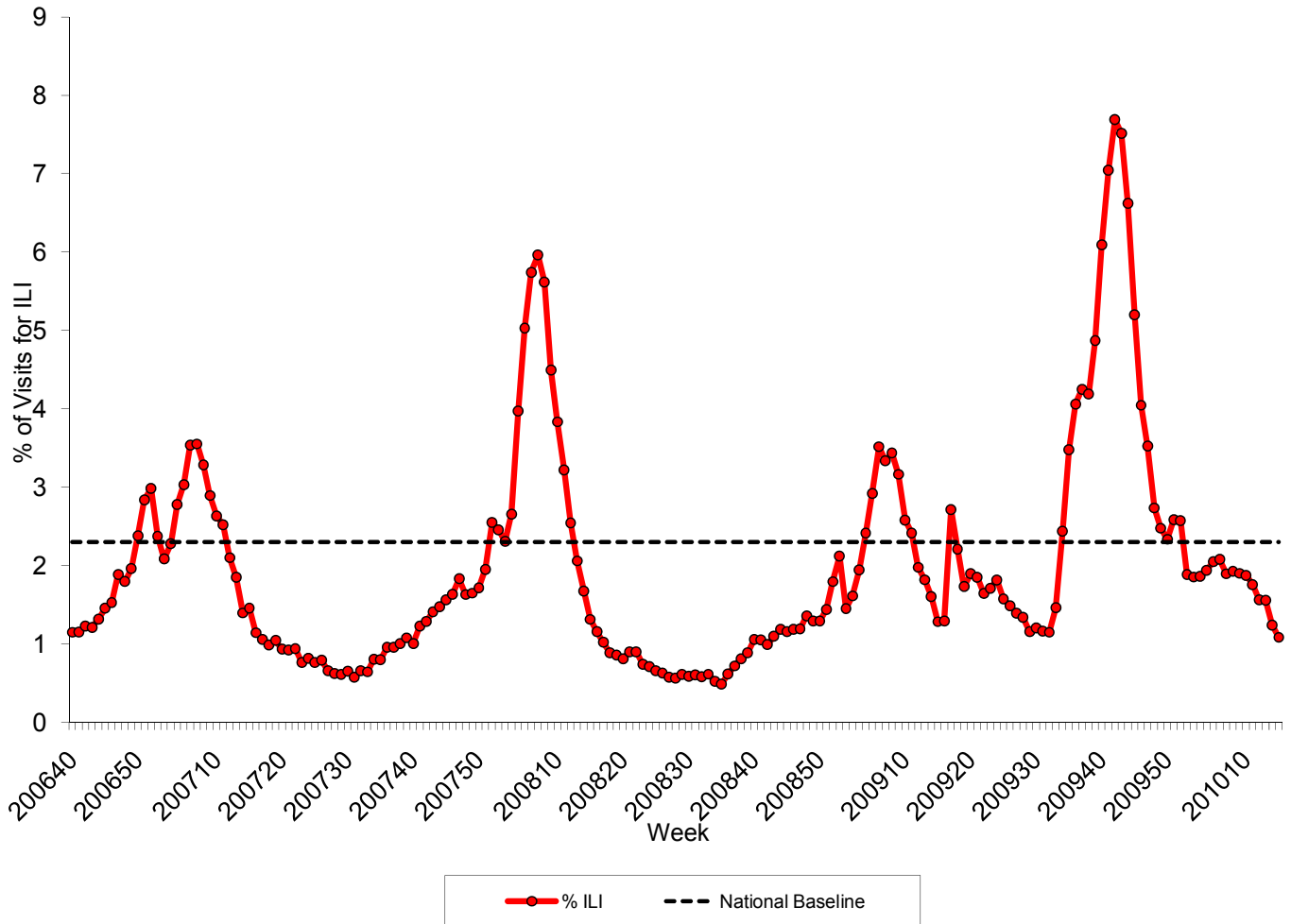
EIP Influenza Laboratory-Confirmed Cumulative Hospitalization Rates, 2009-10 and Previous Three Seasons*



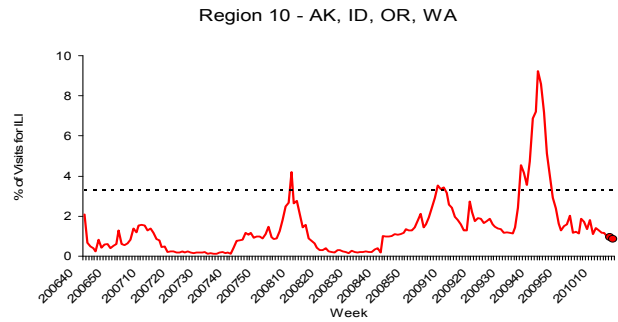
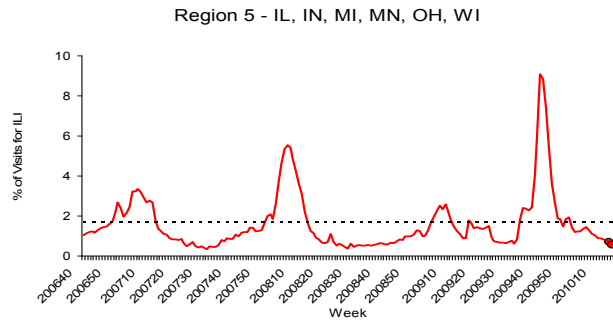
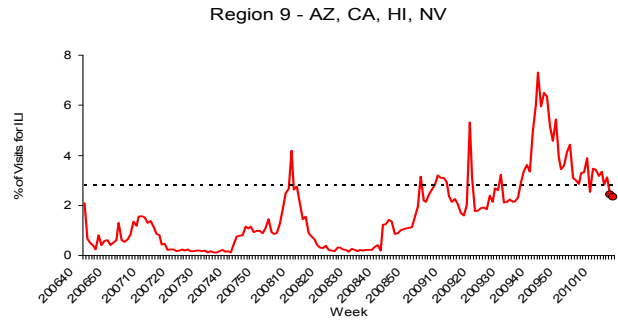
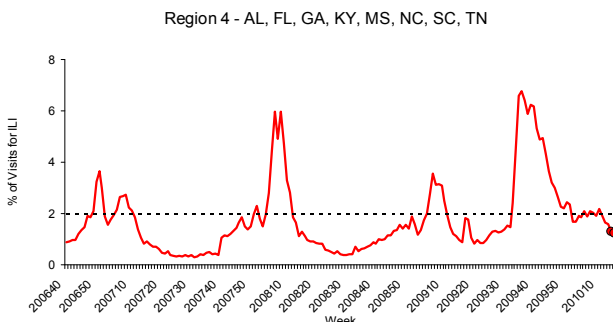
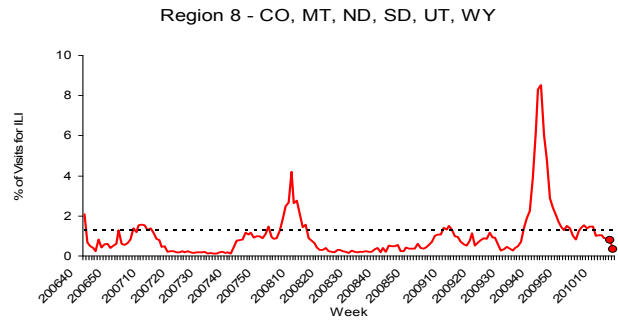
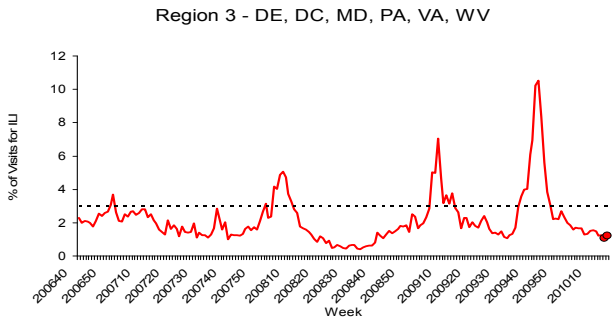
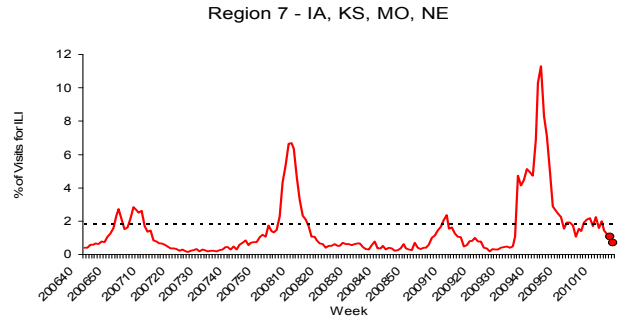
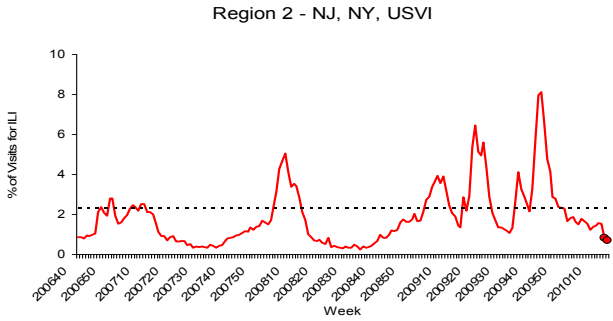
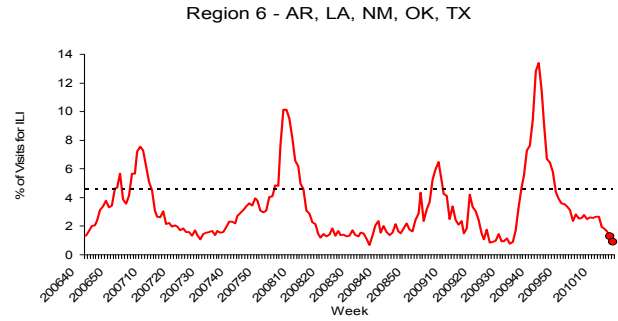
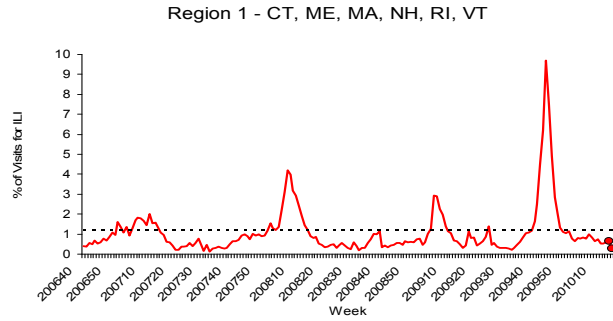
* The 2008-09 EIP rate ended as of April 14, 2009 due to the onset of the 2009 H1N1 season.

Outpatient Illness Surveillance: Nationwide during week 15, 1.1% of patient visits reported through the U.S. Outpatient Influenza-like Illness Surveillance Network (ILINet) were due to influenza-like illness (ILI). This percentage is below the national baseline of 2.3%.

Percentage of Visits for Influenza-like Illness (ILI) Reported by the U.S. Outpatient Influenza-like Illness Surveillance Network (ILINet), Weekly National Summary, October 1, 2006 – April 17, 2010



On a regional level, the percentage of outpatient visits for ILI ranged from 0.3% to 2.3% during week 15. All 10 regions reported ILI below region-specific baseline levels. (Note: Use of the national baseline for regional ILI data or regional baselines for state-level data is not appropriate.)



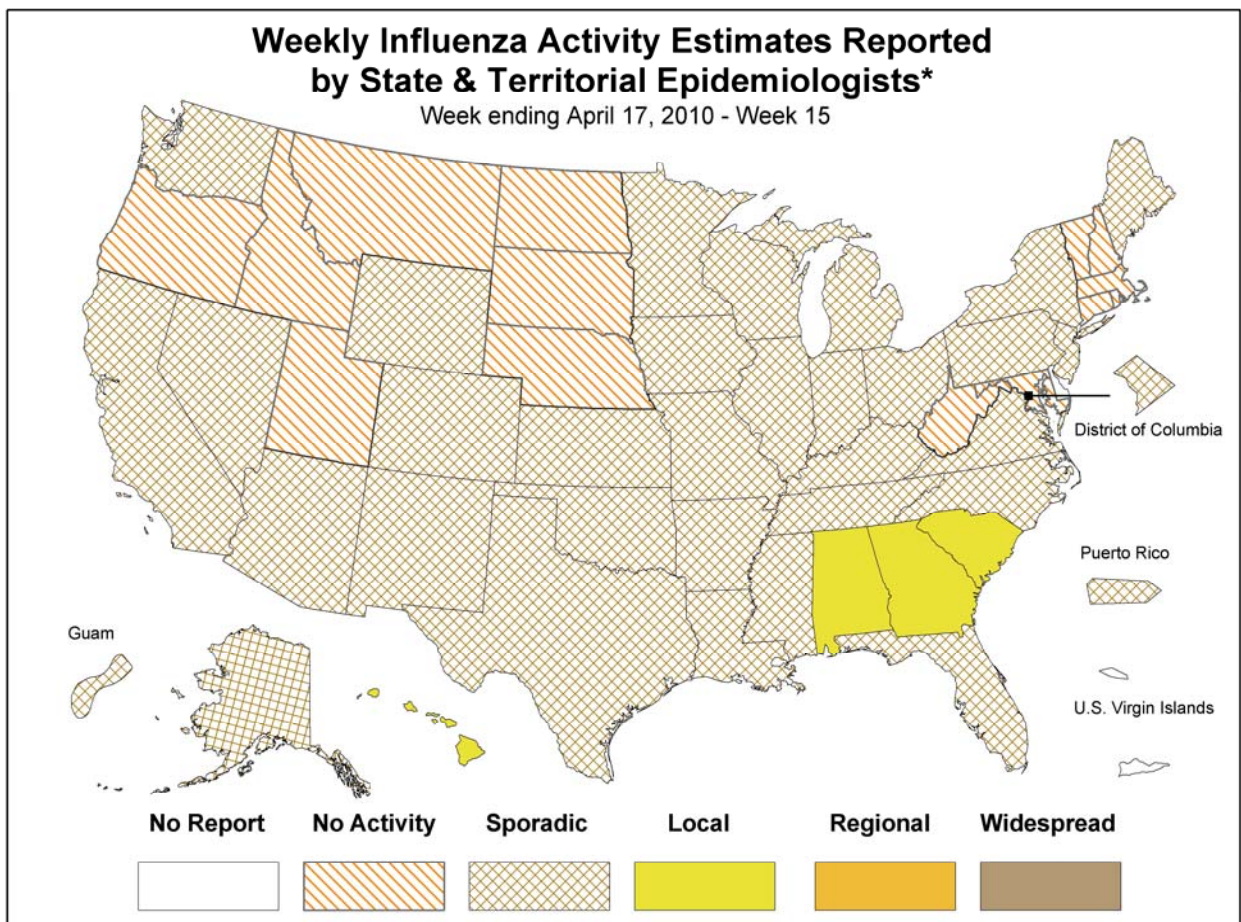
NOTE: Scales differ between regions

*Use of the regional baselines for state data is not appropriate.

Geographic Spread of Influenza as Assessed by State and Territorial Epidemiologists: The influenza activity reported by state and territorial epidemiologists indicates geographic spread of both seasonal influenza and 2009 influenza A (H1N1) viruses and does not measure the severity of influenza activity.

During week 15, the following influenza activity was reported:

- No states reported widespread influenza activity.
- No states reported regional influenza activity.
- Local influenza activity was reported by and four states (Alabama, Georgia, Hawaii, and South Carolina).
- Sporadic influenza activity was reported by the District of Columbia, Guam, Puerto Rico and 31 states (Alaska, Arizona, Arkansas, California, Colorado, Florida, Illinois, Indiana, Iowa, Kansas, Kentucky, Louisiana, Maine, Michigan, Minnesota, Mississippi, Missouri, Nevada, New Jersey, New Mexico, New York, North Carolina, Ohio, Oklahoma, Pennsylvania, Tennessee, Texas, Virginia, Washington, Wisconsin, and Wyoming).
- Fourteen states (Connecticut, Idaho, Maryland, Massachusetts, Montana, Nebraska, New Hampshire, North Dakota, Oregon, Rhode Island, South Dakota, Utah, Vermont, and West Virginia) reported no influenza activity.
- The U.S. Virgin Islands and one state (Delaware) did not report.



* This map indicates geographic spread & does not measure the severity of influenza activity

A description of surveillance methods is available at: <http://www.cdc.gov/flu/weekly/fluactivity.htm>
Report prepared: April 23, 2010.