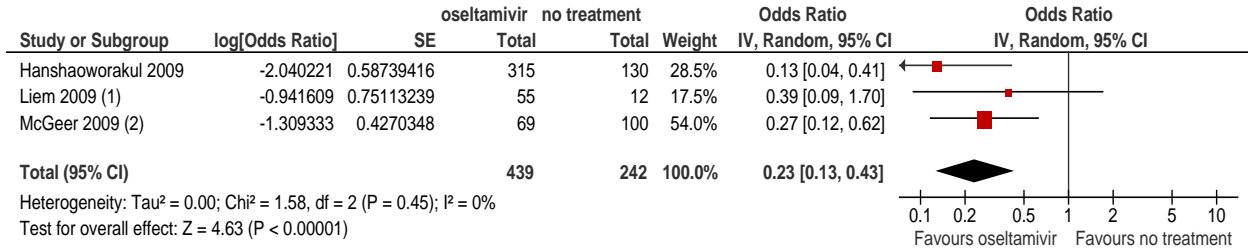


## Supplementary forest plots

### Oral oseltamivir versus no antiviral therapy

#### Mortality (adjusted)

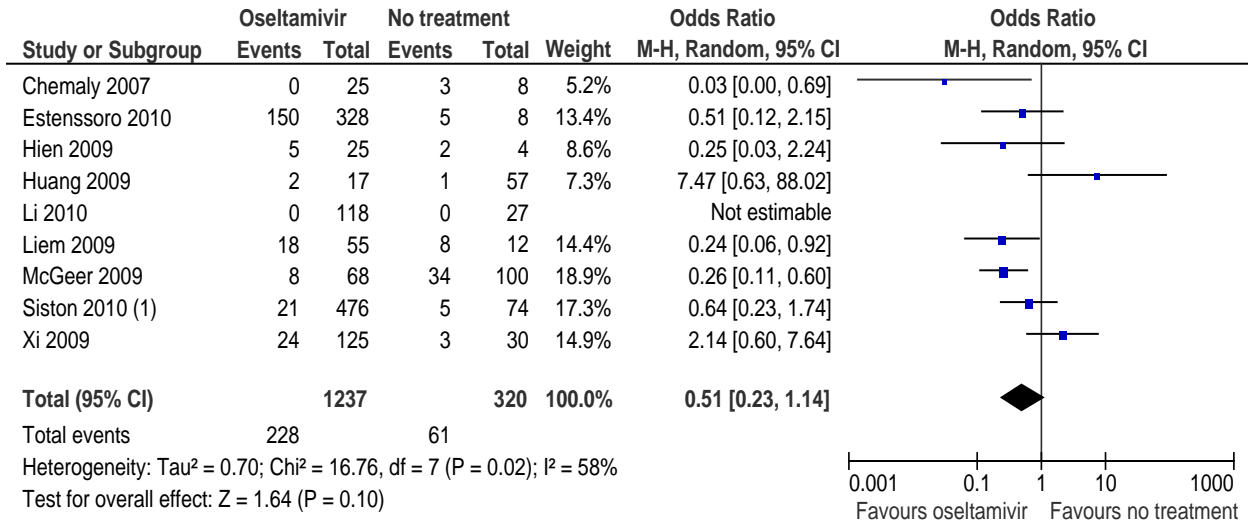


(1) Adjusted for neutropenia and hospital admission

(2) Does not specify what was adjusted for

References: 23,36,40

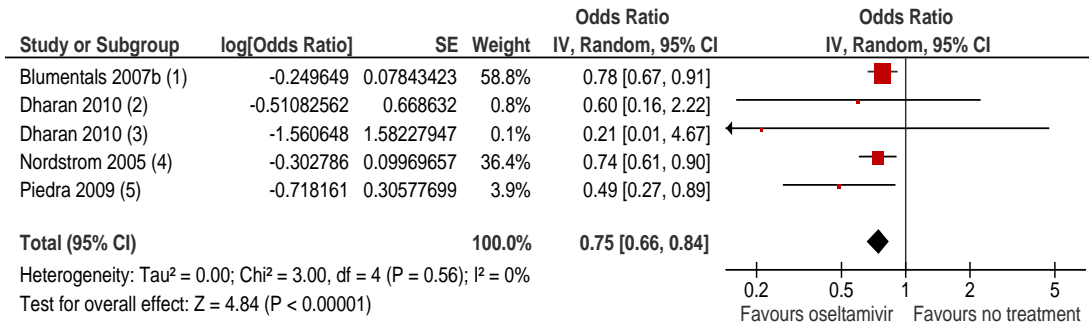
#### Mortality (unadjusted)



(1) Pregnant women

References: 16,22,26,29,36,37,42,52,60

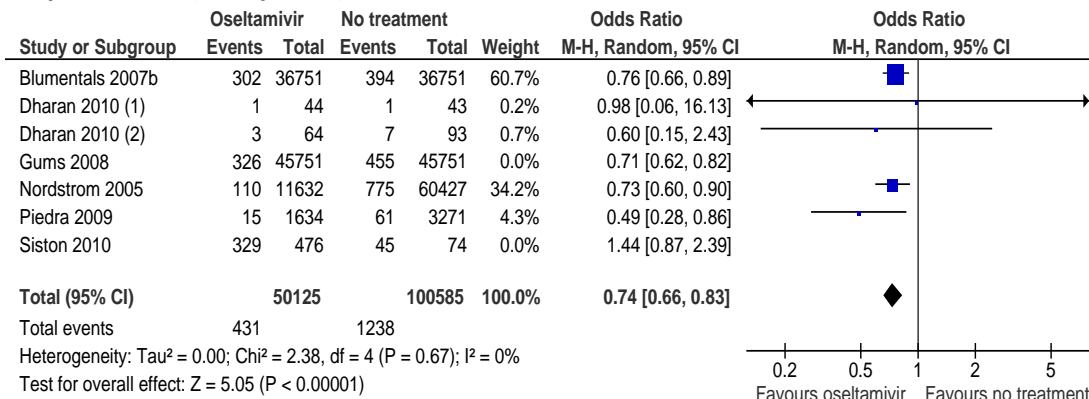
## Hospitalisation (adjusted)



- (1) Adjusted for age, gender, geography, urban, vaccination, influenza season, chronic lung disease, cardiac disease and stroke
- (2) oseltamivir susceptible; Adjusted for state of residence and age
- (3) oseltamivir resistant; Adjusted for state of residence and age
- (4) Adjusted for age
- (5) Adjusted for age, gender, population density, geography, healthcare expenditures, vaccination, season of influenza, comorbidities

References: 12,20,45,48

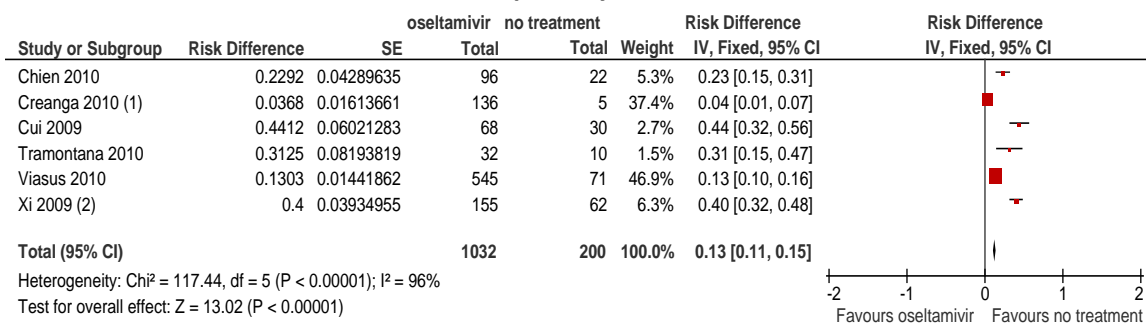
## Hospitalisation (unadjusted)



- (1) oseltamivir resistant
- (2) oseltamivir susceptible

References: 12,20,23,45,47,52

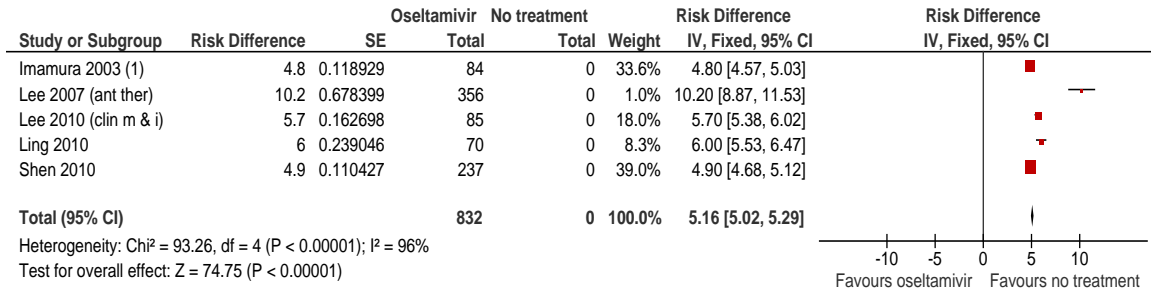
## ICU admission/mechanical ventilation/respiratory failure



- (1) (pregnant and non-pregnant women)
- (2) hospitalised patients

References: 17,18,19,57,59,60

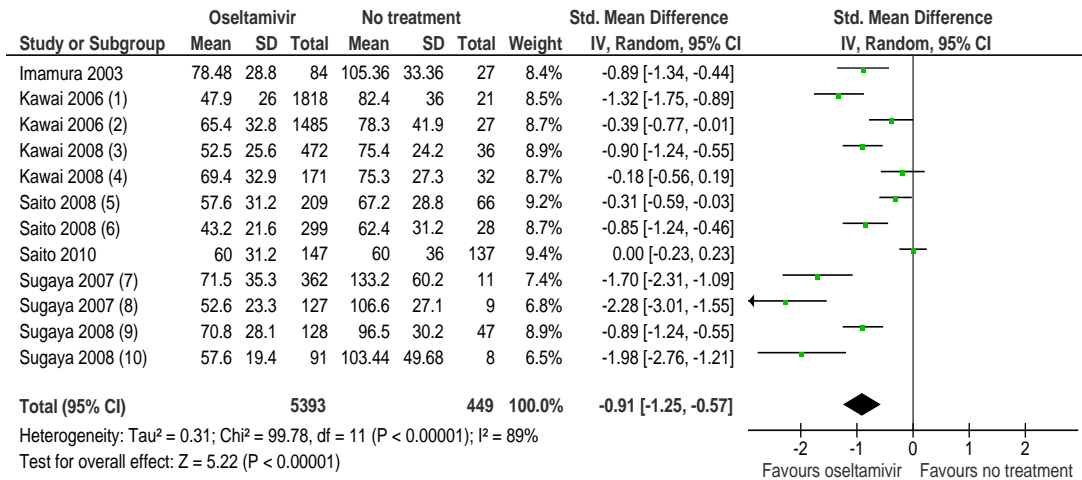
## Duration of hospitalisation



(1) (single arm used)

References: 30,33,35,51

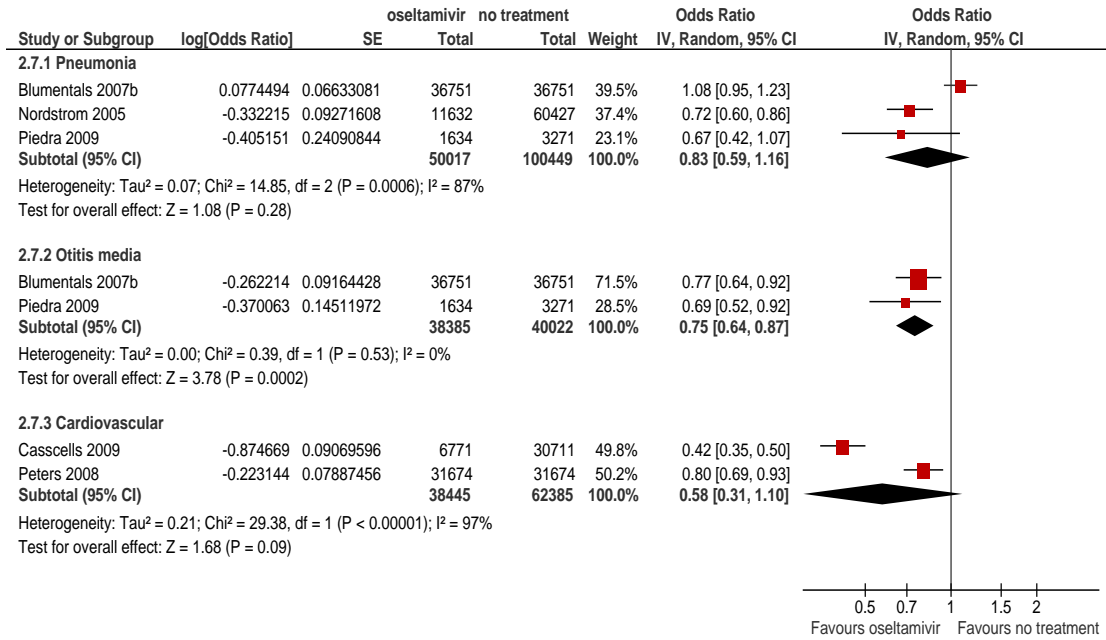
## Duration of signs and symptoms



- (1) Influenza A group
- (2) Influenza B group
- (3) Influenza A group
- (4) Influenza B group
- (5) Influenza B group
- (6) Influenza A group
- (7) influenza B
- (8) influenza A
- (9) influenza B
- (10) influenza A, H3N2

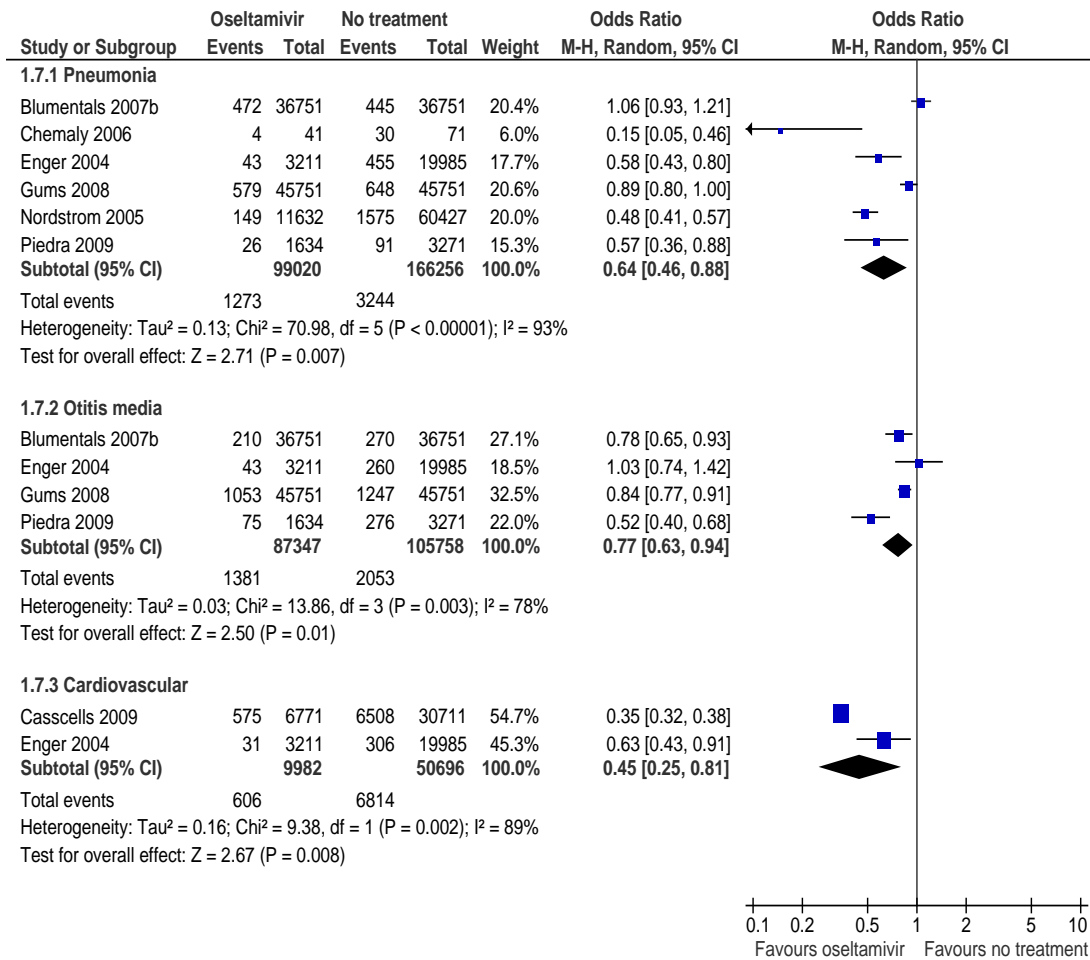
References: 30,31,32,49,50,55,56

## Complications (adjusted)



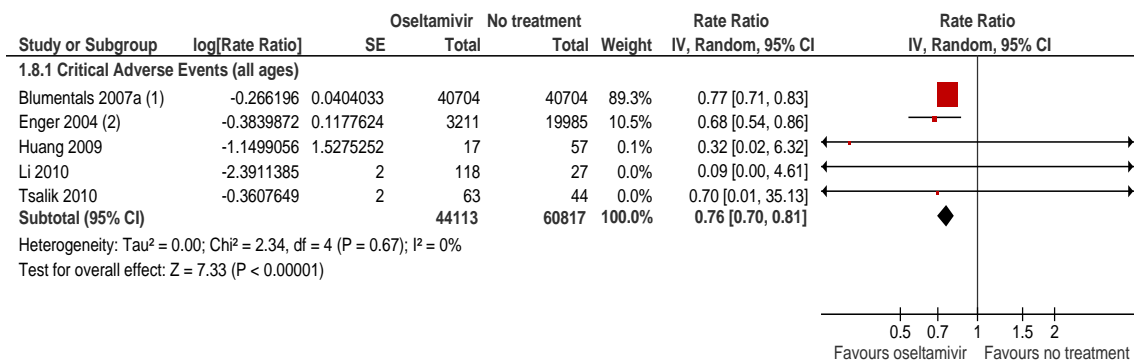
References: 12,45,48,14

## Complications (unadjusted)



References: 13,15,21,23,45,48

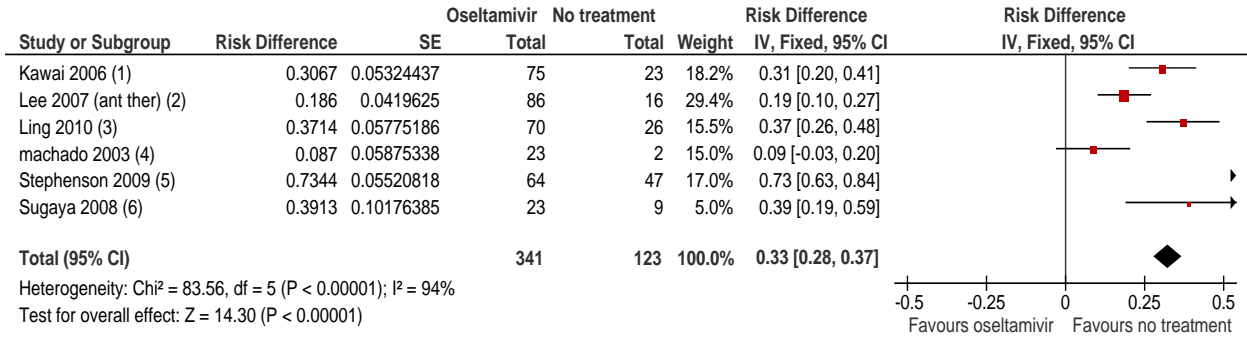
## Critical adverse events



- (1) CNS and neuropsychiatric  
(2) Major neuropsychiatric outcome

References: 12,21,29,36,58

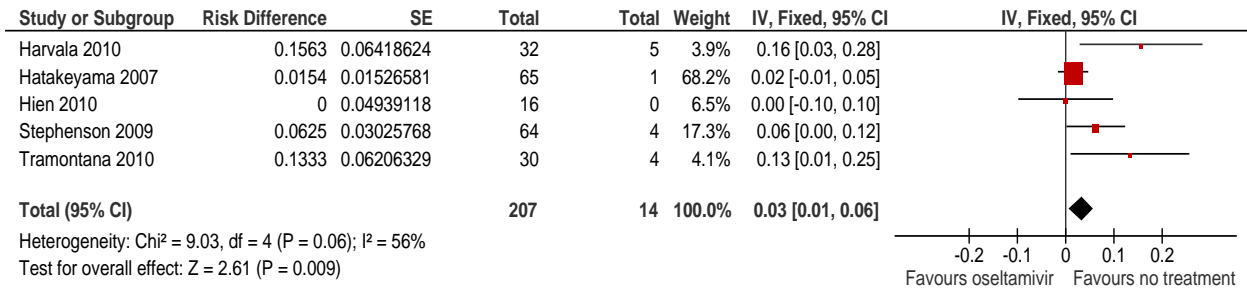
## Viral shedding (persistent virus)



- (1) 4-6 days
- (2) >4 days
- (3) 7 days
- (4) >7 days
- (5) 4-7 days
- (6) day 5

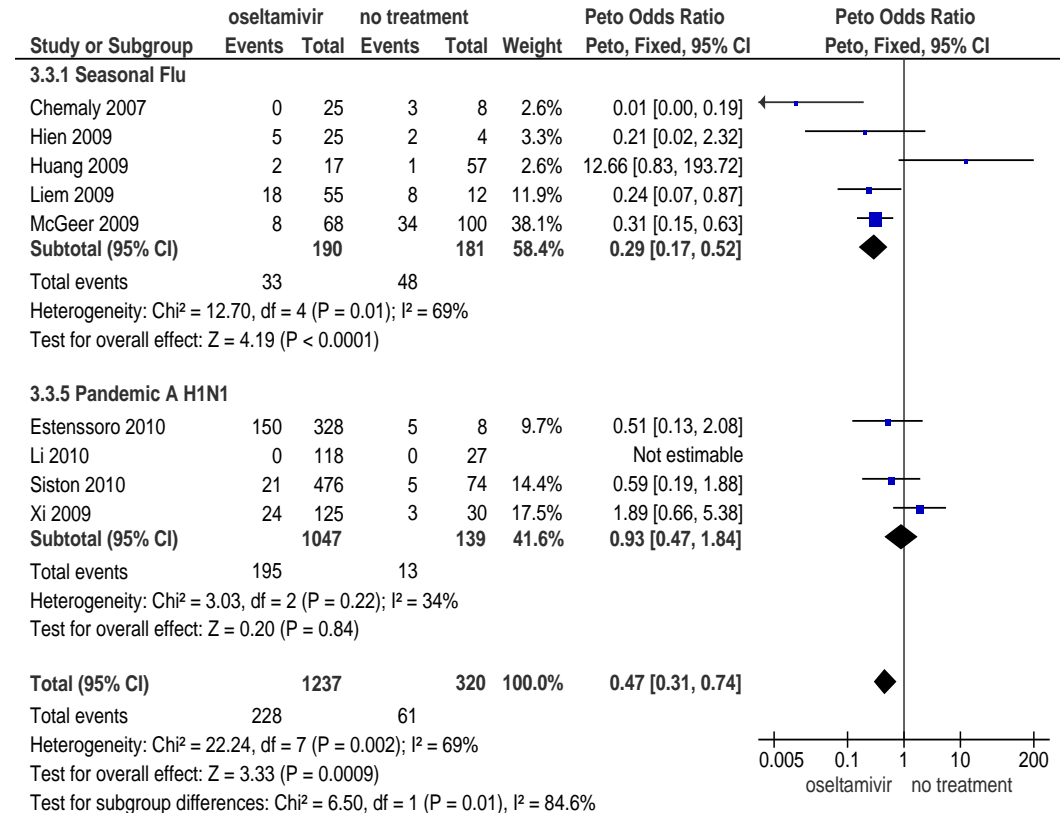
References: 32,35,38,54,56

## Resistance



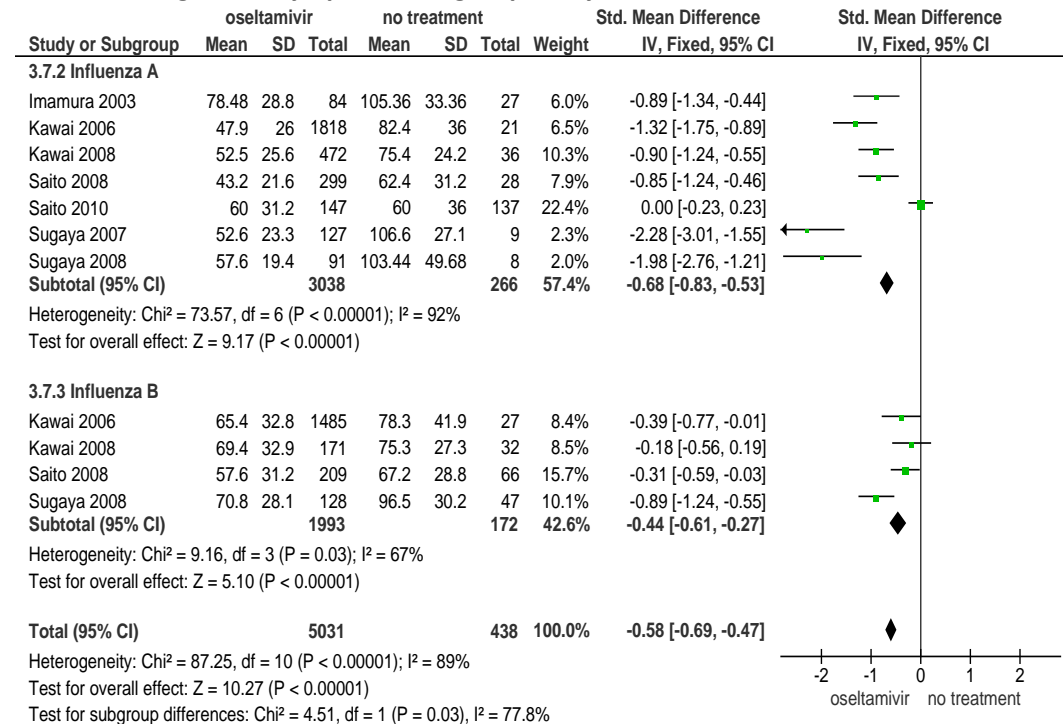
References: 25,26,28,54,57

### Mortality subgroup analysis – Pandemic vs Seasonal influenza



References: 16,27,29,37,42,22,36,52,60

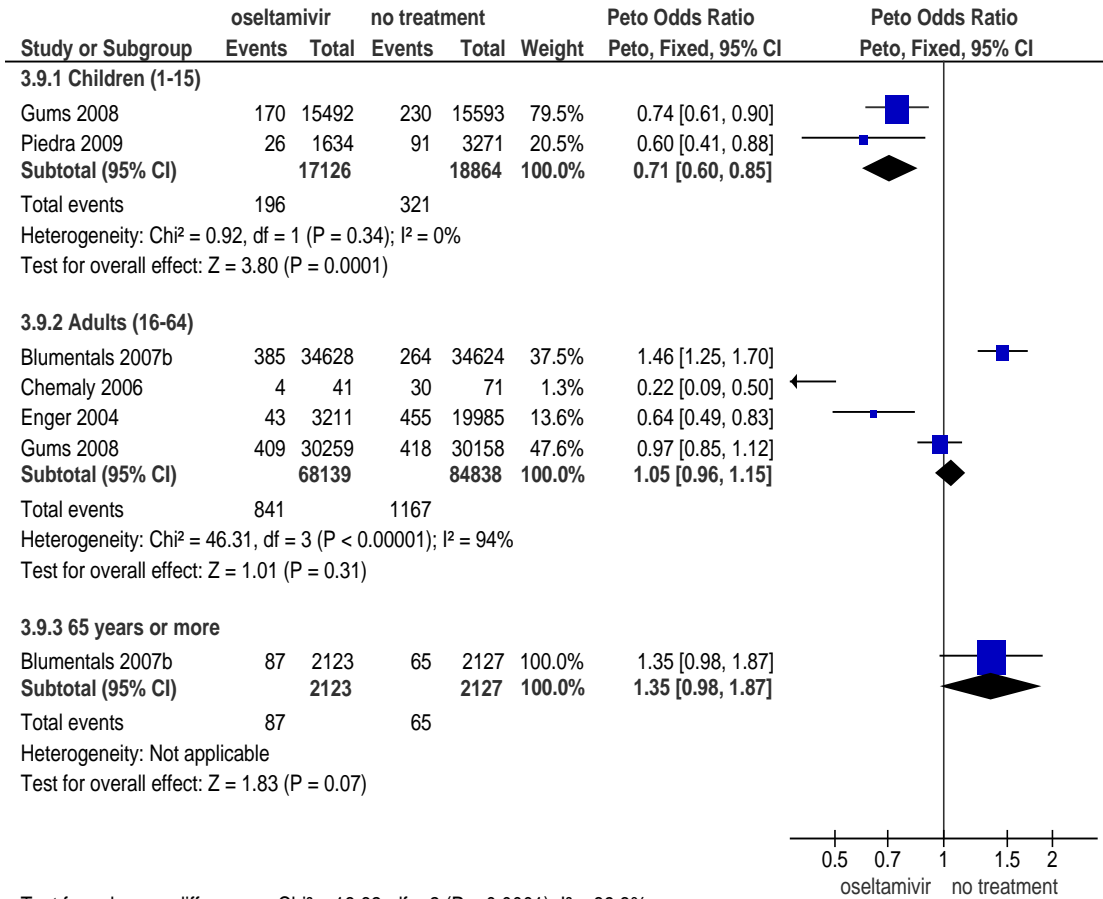
### Duration of signs and symptoms subgroup analysis – Influenza A vs B



References: 30,32,31,50,51,55,56

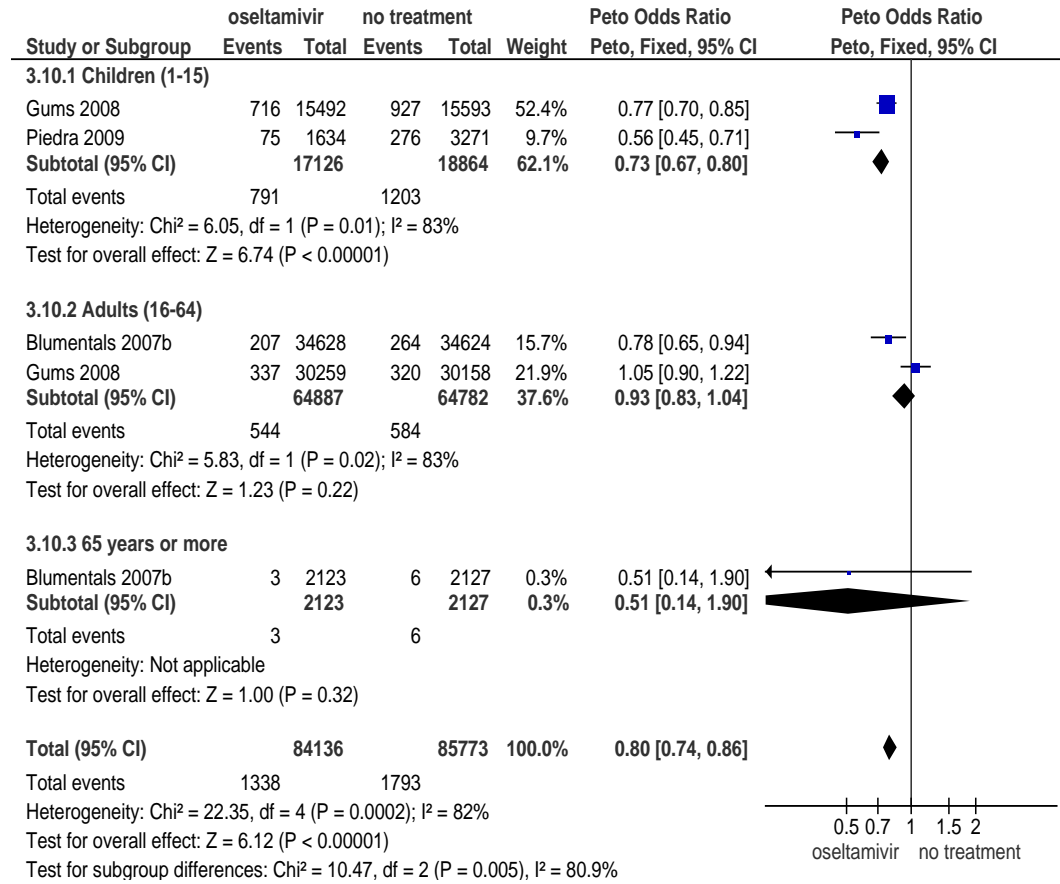


### Pneumonia subgroup analysis – children, adults, ≥65 years



References: 23,48,13,15,21

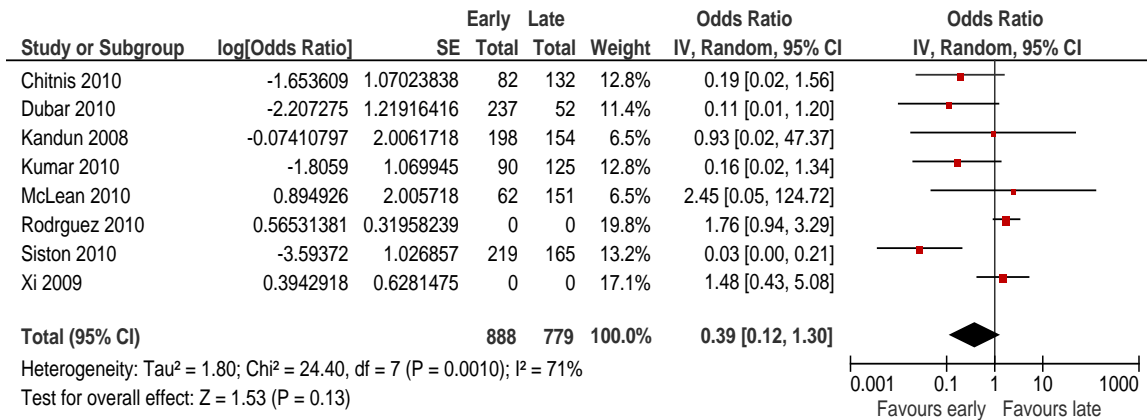
### Otitis media subgroup analysis – children, adults, ≥65 years



References: 23,48,13

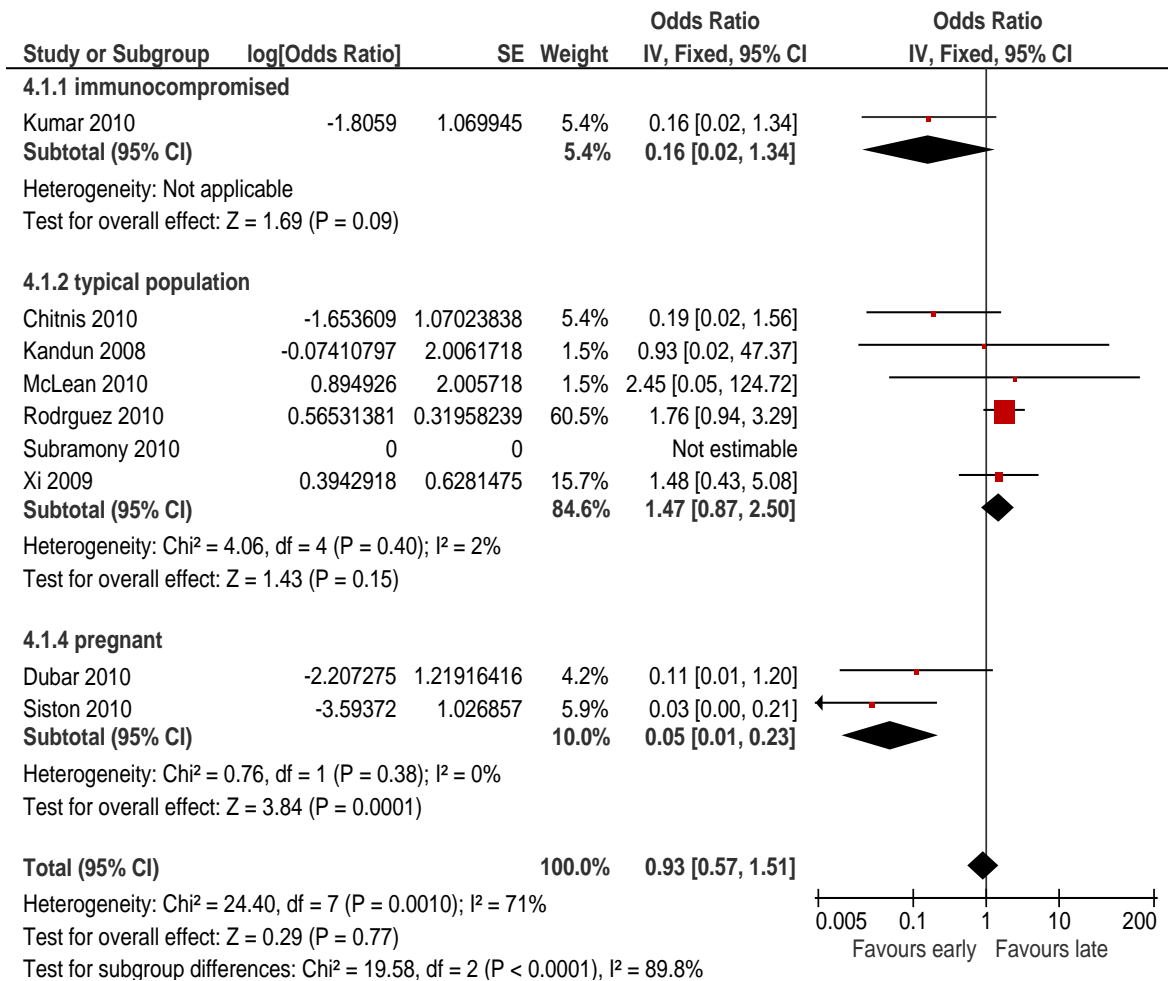
## Oral oseltamivir treatment within 48 hours or after 48 hours

### Mortality



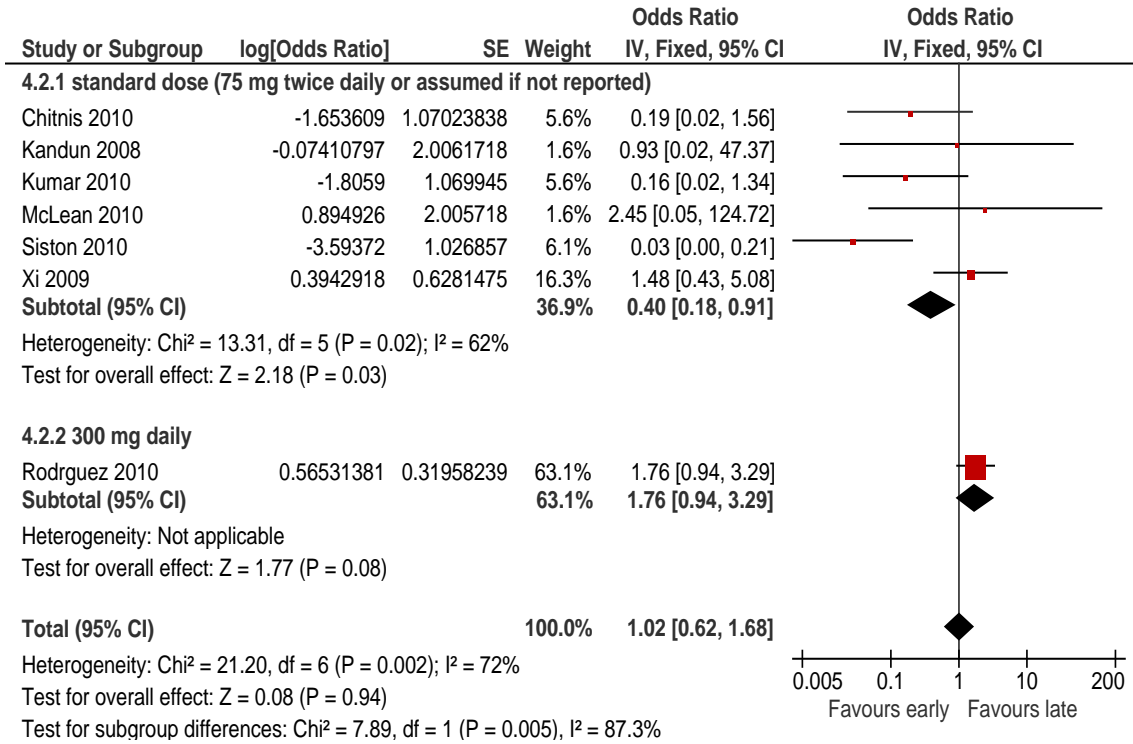
References: 63,64,65,66,43,68,52,60

### Mortality subgroup analysis (baseline risks)



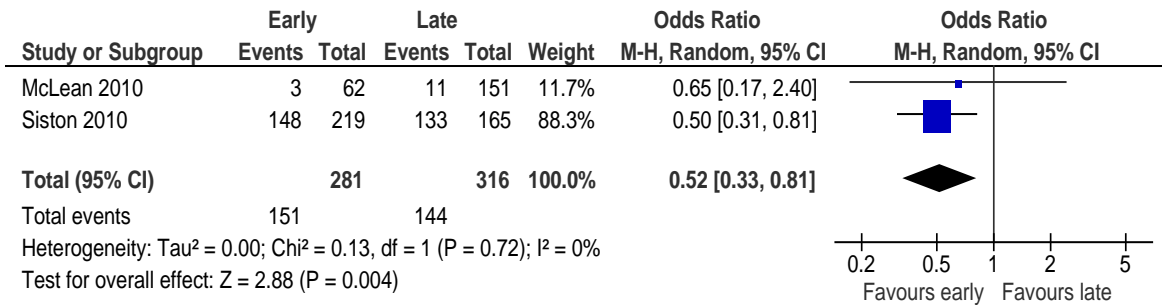
References: 66,63,65,43,68,69,60,64,52

### Mortality subgroup analysis – dosage



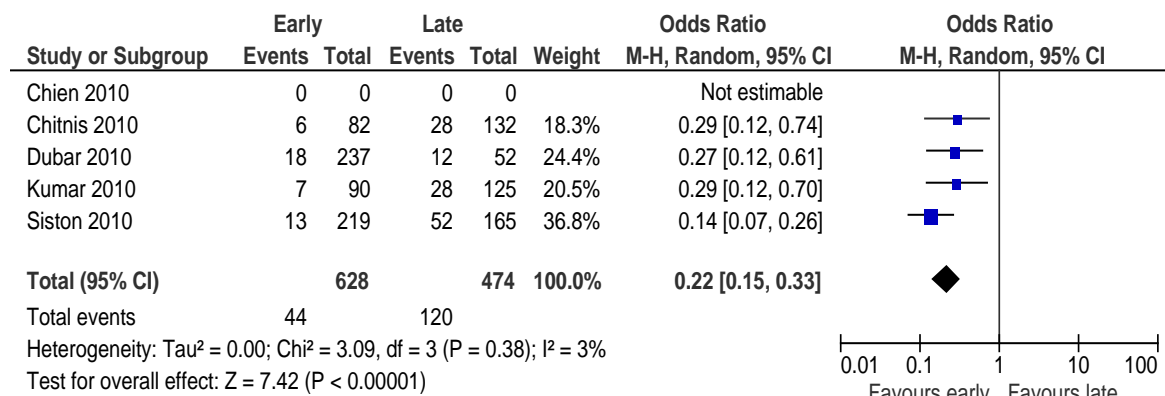
References: 63,65,66,43,52,60,68

### Hospitalisation



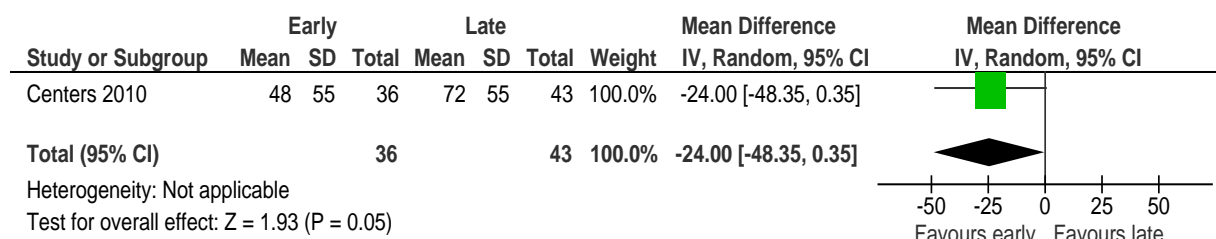
References: 43,52

## ICU admissions, mechanical ventilation or respiratory failure



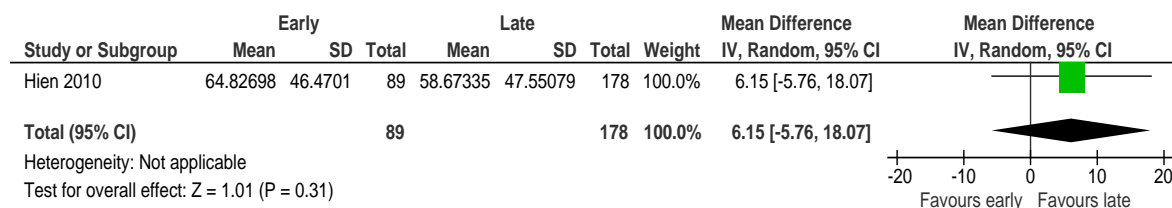
References: 17,63,64,66,52

## Duration of hospitalisation



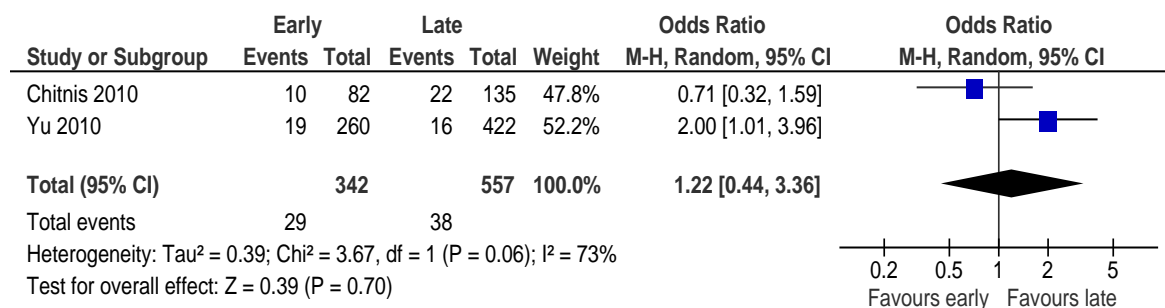
References: 62

## Duration of signs and symptoms



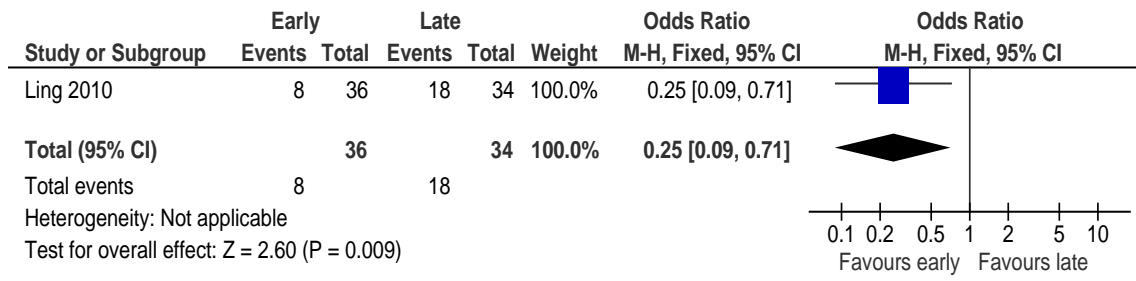
References: 28

## Critical complications



References: 63,70

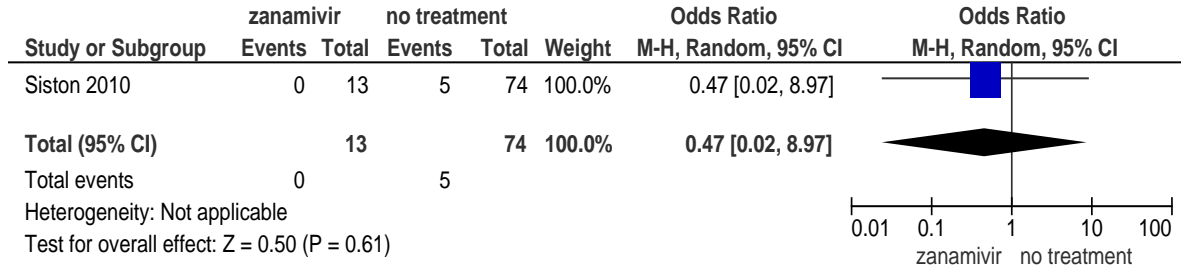
**Number with viral shedding at 7 days**



References: 38

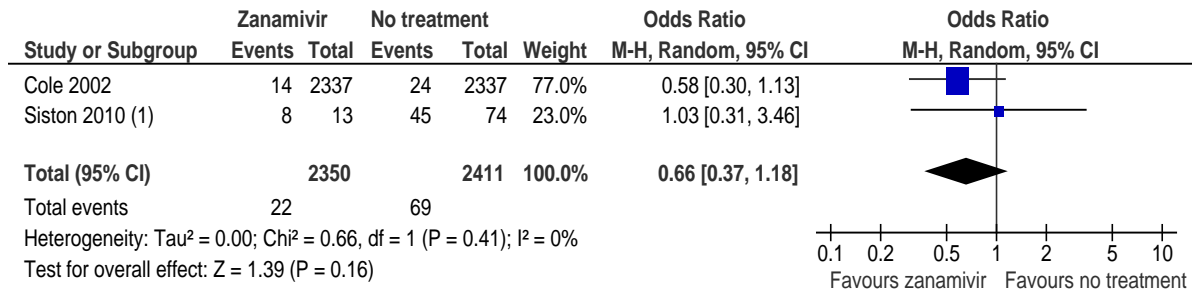
## Inhaled zanamivir versus no antiviral therapy

### Mortality



References: 52

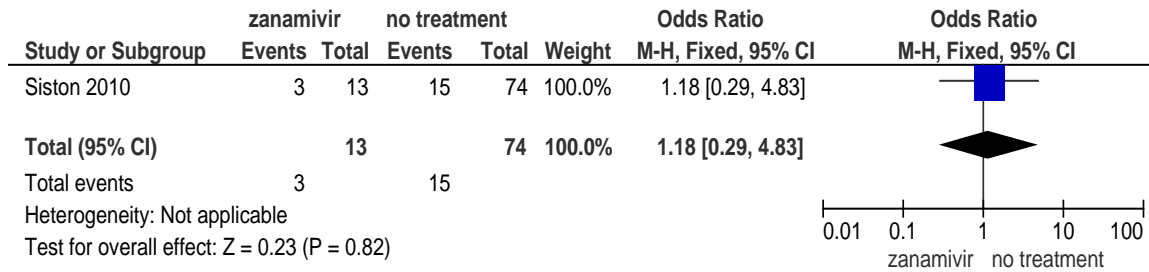
### Hospitalisation



(1) Pregnant women

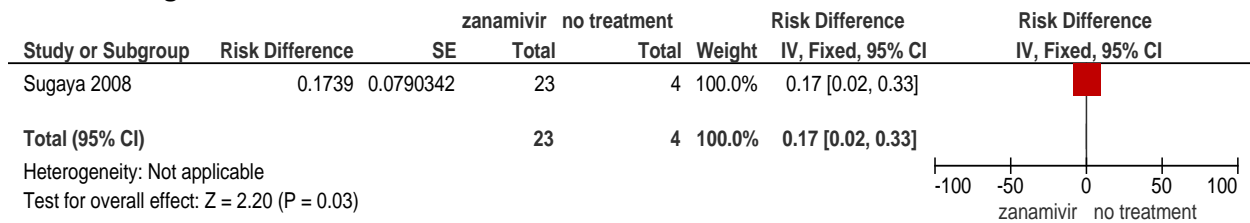
References: 71,52

### ICU admission



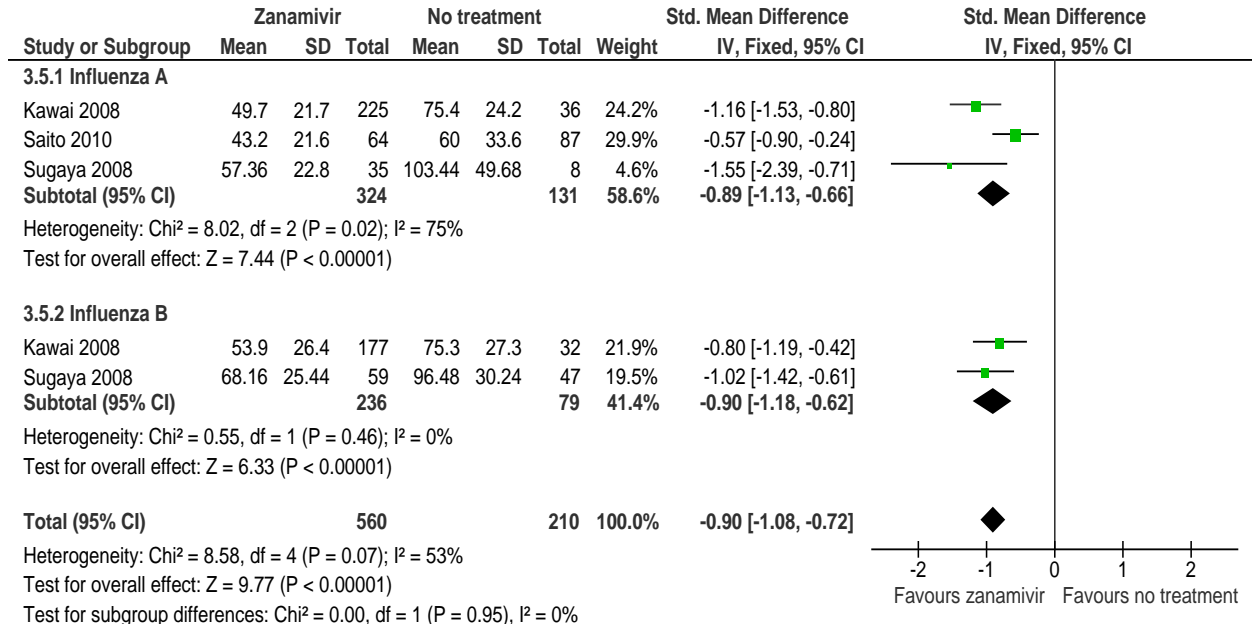
References: 52

### Viral shedding



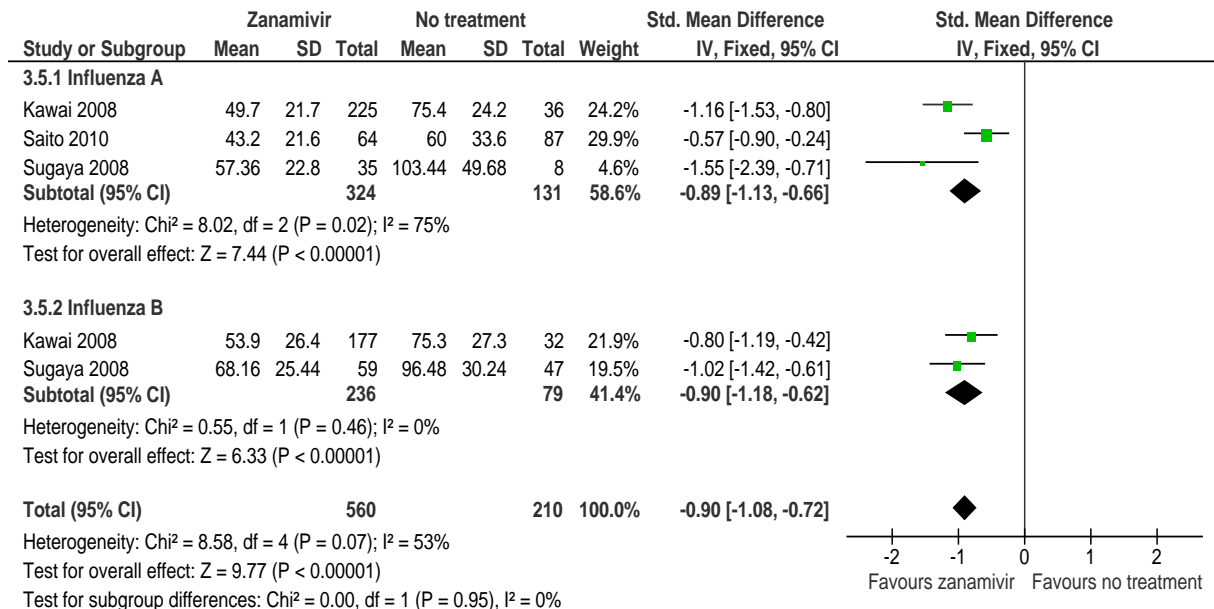
References: 56

## Duration of signs and symptoms



References: 31,50,56

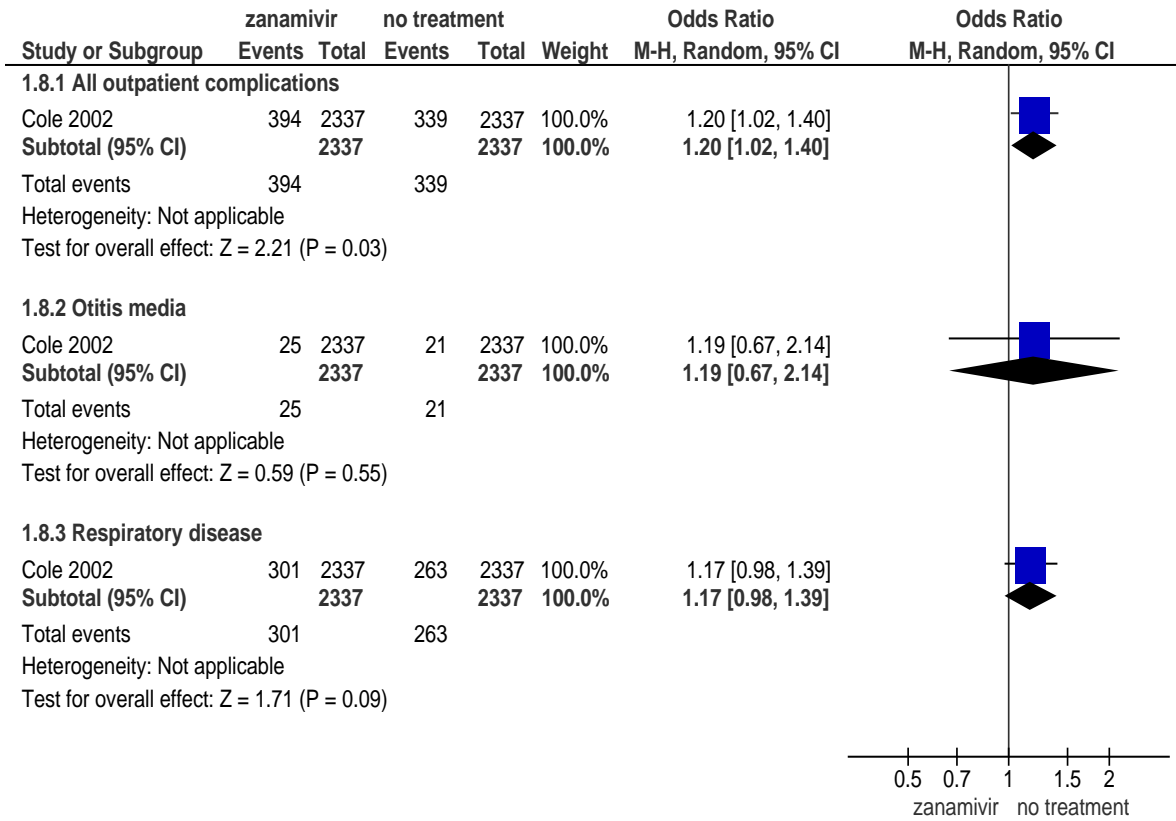
## Duration of signs and symptoms subgroup analysis – Influenza A vs B



References: 31,49,56



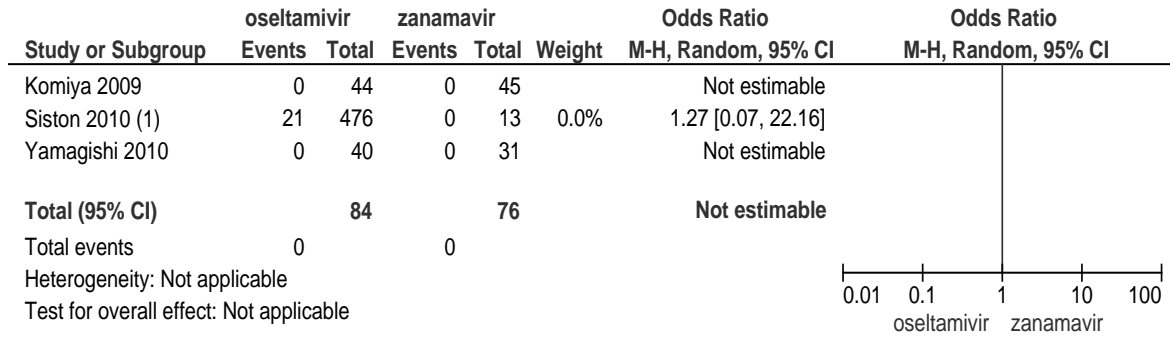
## Complications



References: 71

## Oral oseltamivir versus inhaled zanamivir

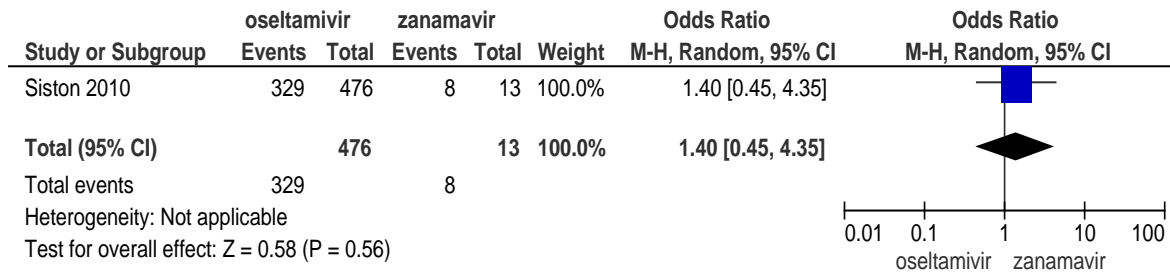
### Mortality



(1) pregnant women

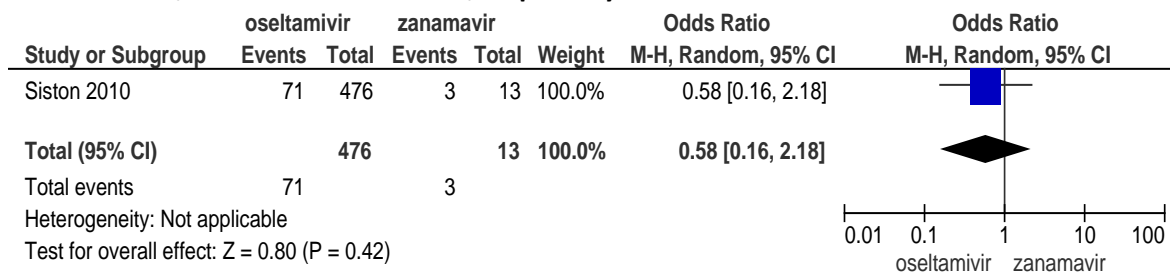
References: 75,52,76

### Hospitalisation



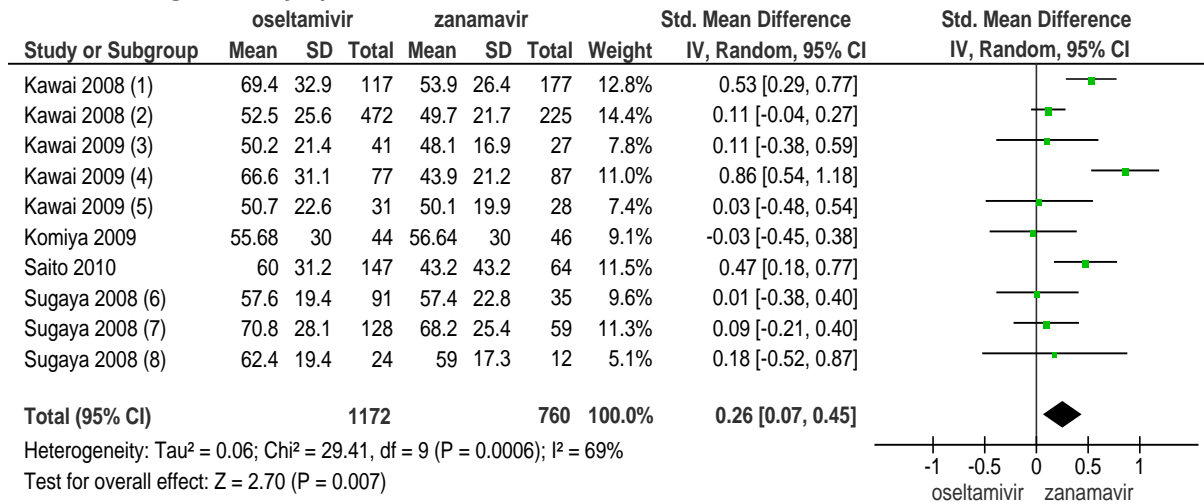
References: 52

### ICU admission, mechanical ventilation, respiratory failure



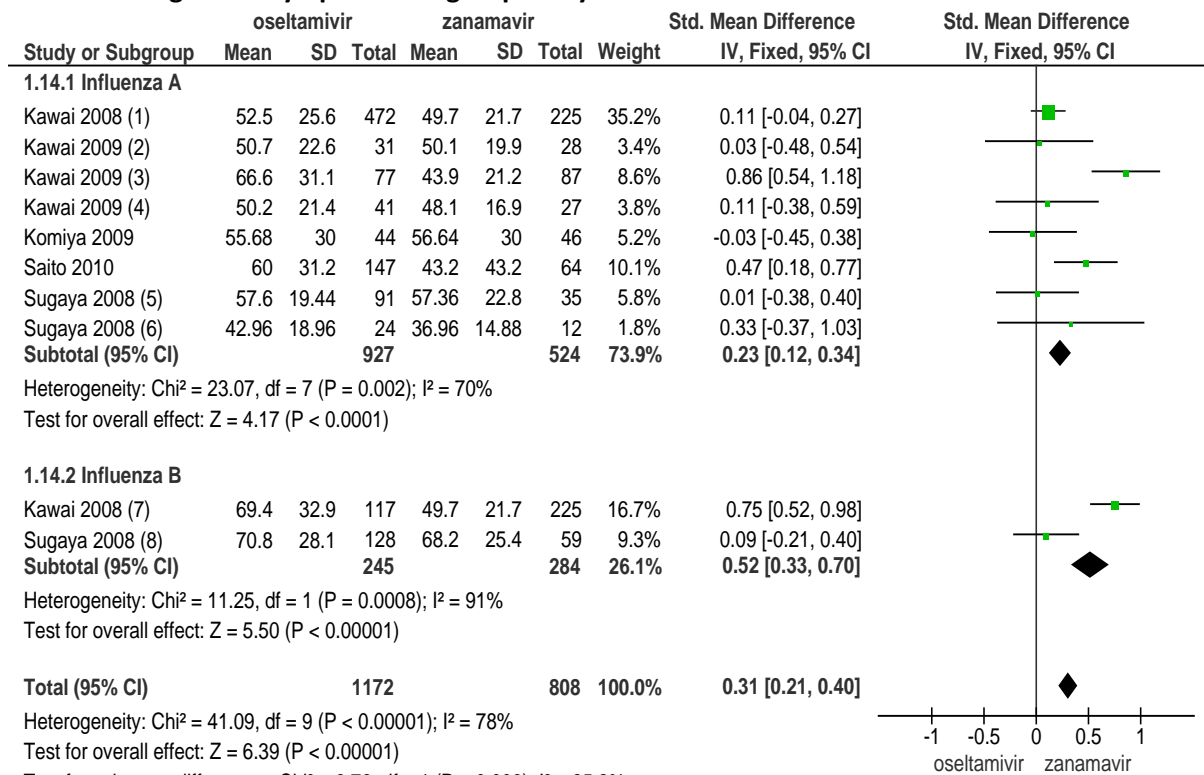
References: 52

### Duration of signs and symptoms



References: 31,74,75,49,56

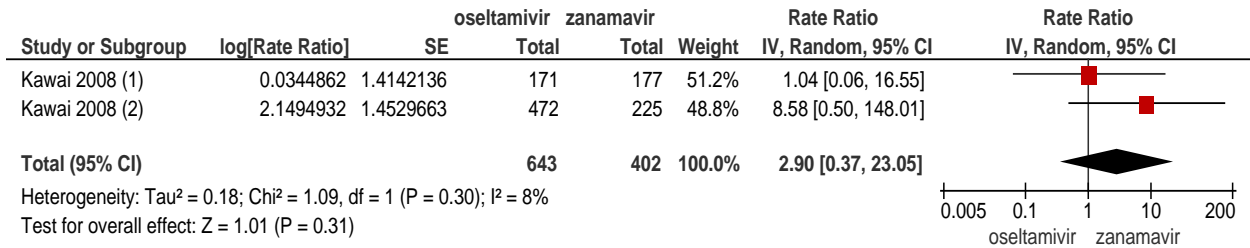
### Duration of signs and symptoms subgroup analysis – Influenza A vs B



(1) Influenza A group  
 (2) H3N2 group 2008-2009  
 (3) H1N1 2008-2009 adults  
 (4) H1N1 group 2007-2008  
 (5) Influenza A H3N2  
 (6) Influenza A H1N1  
 (7) Influenza B group  
 (8) influenza B

References: 31,74,75,49,56

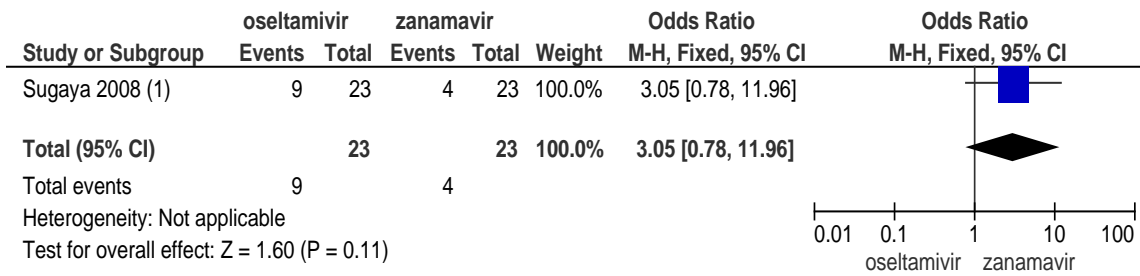
### Critical adverse outcomes



- (1) influenza B
- (2) influenza A

References: 31

### Viral shedding (virus persistence)

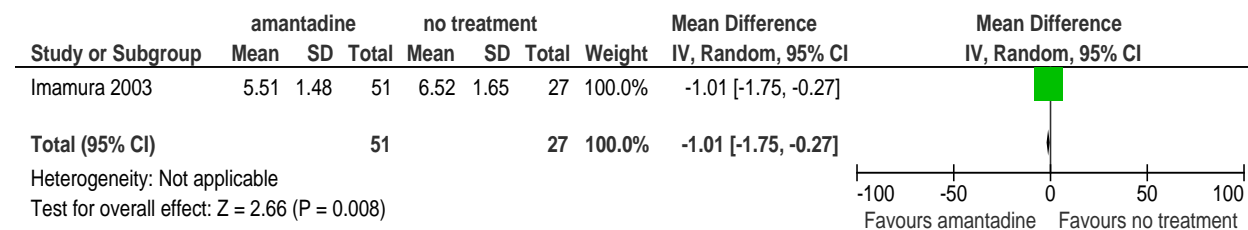


- (1) day 5

References: 56

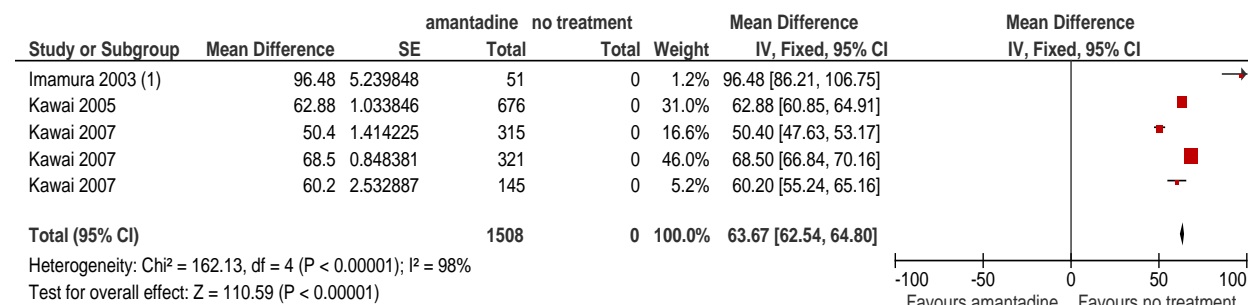
## Oral amantadine versus no antiviral therapy

### Duration of hospitalisation



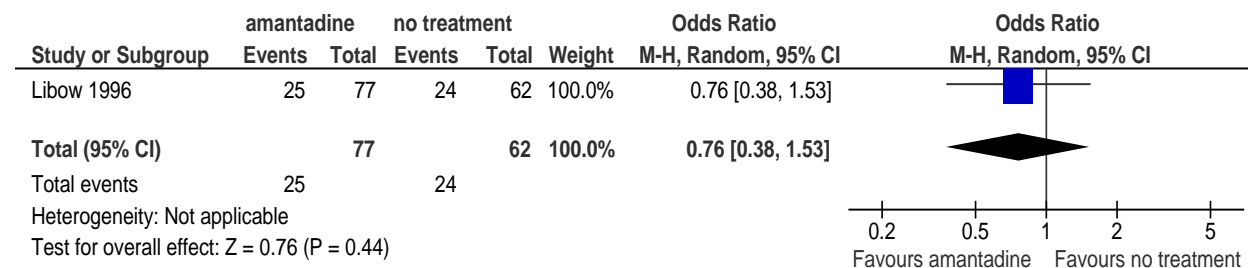
References: 30

### Duration of signs and symptoms



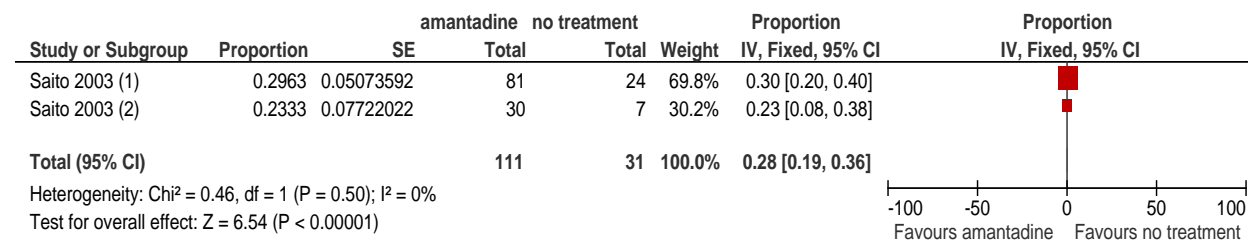
References: 30,80,81

### Pneumonia



References: 78

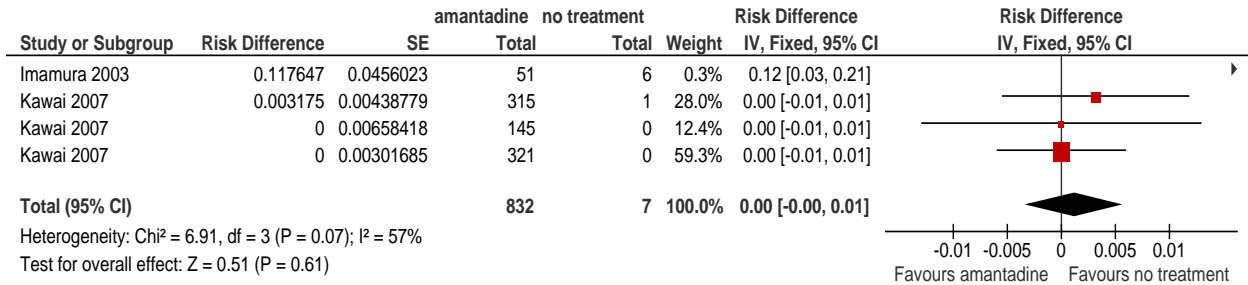
### Resistance



(1) 2000-2001 influenza season Niigata City, Japan  
(2) 1999-2000 influenza season Niigata City, Japan

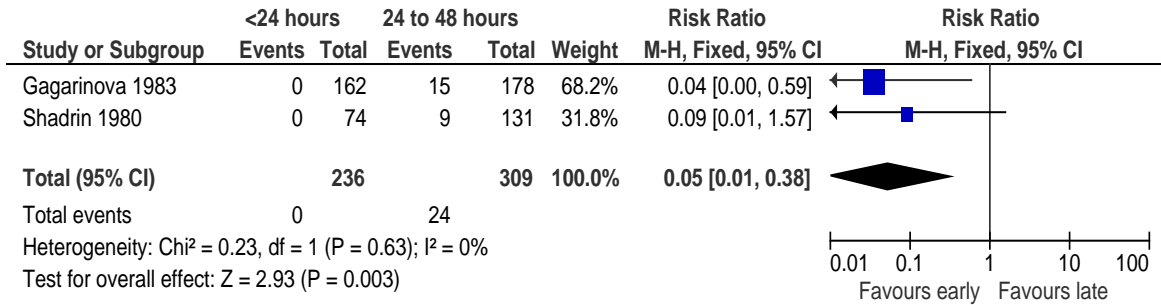
References: 82

## Adverse events



References: 30,81

## Early versus late oral rimantadine Complications (unspecified)



References: 83,84