

2008-2009 Influenza Season
Week 47, ending November 22, 2008

(All data are preliminary and may change as more reports are received.)

Synopsis: During week 47 (November 16-22, 2008), a low level of influenza activity was reported in the United States.

- Fifty-two (2.5%) specimens tested by U.S. World Health Organization (WHO) and National Respiratory and Enteric Virus Surveillance System (NREVSS) collaborating laboratories and reported to CDC/Influenza Division were positive for influenza.
- The proportion of deaths attributed to pneumonia and influenza (P&I) was below the epidemic threshold.
- The proportion of outpatient visits for influenza-like illness (ILI) was below national and region-specific baseline levels.
- One state reported local influenza activity; the District of Columbia and 19 states reported sporadic influenza activity; 29 states reported no influenza activity; and one state did not report.

National and Regional Summary of Select Surveillance Components

	Data for current week			Data cumulative for the season				
	Out-patient ILI*	% positive for flu†	Number of jurisdictions reporting regional or widespread activity‡	A (H1)	A (H3)	A Unsub-typed	B	Pediatric Deaths
Nation	Normal	2.5%	0 of 51	101	14	128	66	0
New England	Normal	0.5%	0 of 6	0	1	2	1	0
Mid-Atlantic	Normal	0.1%	0 of 3	2	0	2	1	0
East North Central	Normal	5.3%	0 of 5	4	0	3	6	0
West North Central	Normal	0.3%	0 of 7	0	0	2	1	0
South Atlantic	Normal	1.8%	0 of 9	8	2	45	23	0
East South Central	Normal	0.0%	0 of 4	0	0	0	0	0
West South Central	Normal	3.6%	0 of 4	10	0	28	20	0
Mountain	Normal	1.2%	0 of 8	2	7	7	4	0
Pacific	Normal	5.4%	0 of 5	75	4	39	10	0

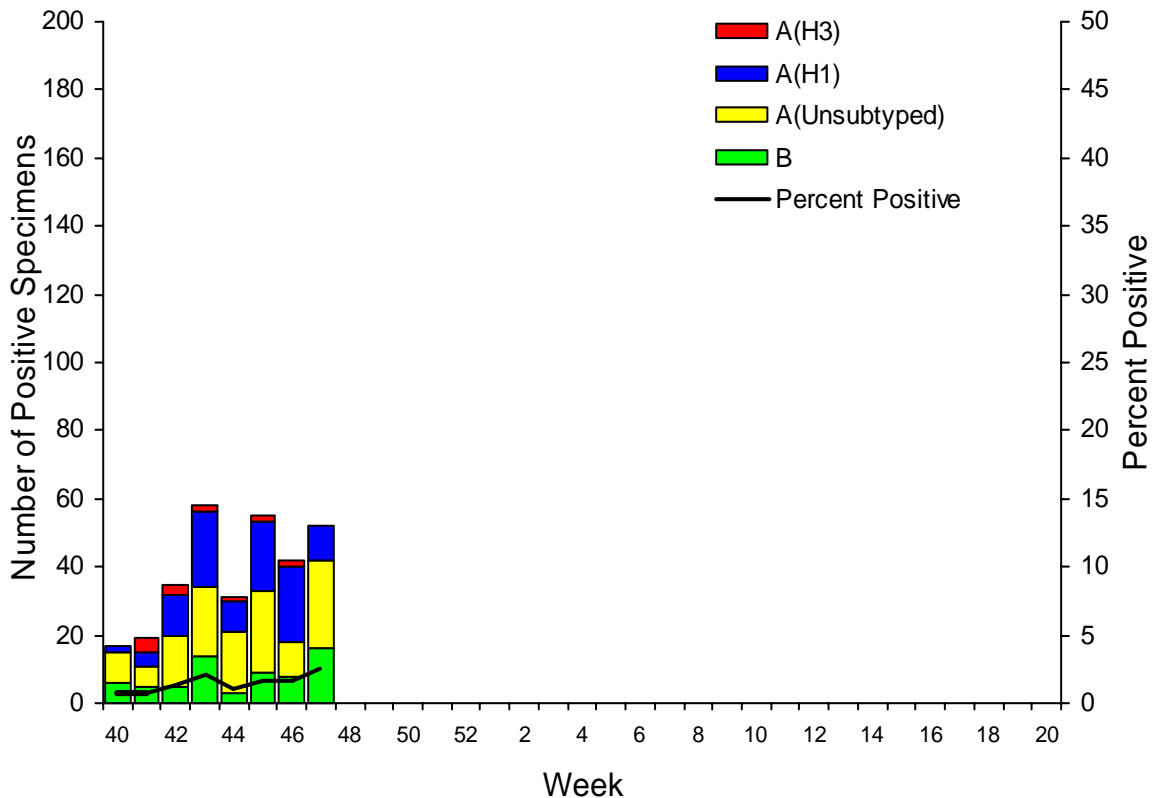
* Elevated means the % of visits for ILI is at or above the national or region-specific baseline

† National data are for current week; regional data are for the most recent three weeks

‡ Includes all 50 states and the District of Columbia

U.S. Virologic Surveillance: During week 47, WHO and NREVSS laboratories located in all 50 states and Washington D.C. reported 2,080 specimens tested for influenza viruses, 52 of which were positive: ten influenza A (H1) viruses, 26 influenza A viruses that were not subtyped, and 16 influenza B viruses. Twenty-five states from eight of the nine surveillance regions have reported laboratory-confirmed influenza this season with three states accounting for 235 (76.1%) of the 309 reported influenza viruses.

Influenza Positive Tests Reported to CDC by U.S. WHO/NREVSS Collaborating Laboratories, National Summary, 2008-09



Antigenic Characterization: CDC has antigenically characterized 21 influenza viruses [20 influenza A (H1) and one influenza B virus] collected by U.S. laboratories since October 1, 2008. All influenza A (H1) viruses were antigenically related to A/Brisbane/59/2007, the A (H1N1) component selected for the 2008-09 influenza vaccine. The influenza B virus was characterized as B/Florida/04/2006-like, the influenza B component of the 2008-09 influenza vaccine.

It is too early in the influenza season to determine which influenza viruses will predominate or how well the vaccine and circulating strains will match.

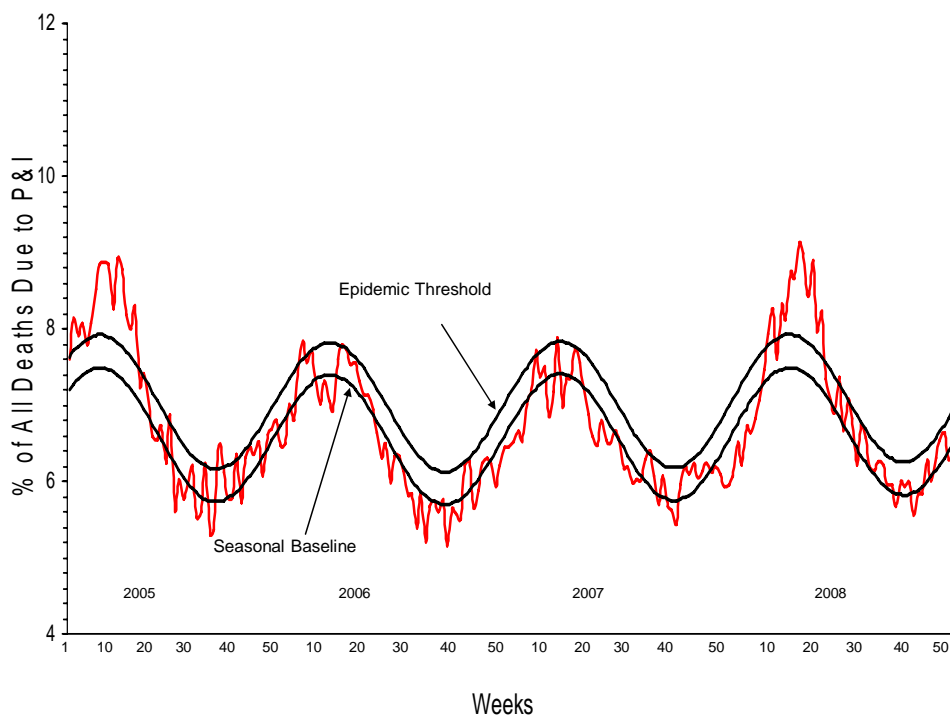
Antiviral Resistance: Since October 1, 2008, 21 influenza A (H1N1), five influenza A (H3N2), and eight influenza B viruses from eight states have been tested for antiviral resistance; however, 71% of the viruses tested were from only two states. Twenty of 21 influenza A (H1N1) viruses tested were resistant to oseltamivir; all 21 viruses were sensitive to zanamivir. All influenza A (H3N2) and B viruses tested were sensitive to oseltamivir and zanamivir.

Six influenza A (H1N1) and four influenza A (H3N2) viruses were tested for adamantane resistance. All influenza A (H1N1) viruses were sensitive to adamantanes and all influenza A (H3N2) viruses tested were resistant to adamantanes. The adamantanes are not effective against influenza B viruses.

Only one state has reported local influenza activity during the 2008-09 season in the United States to date, thus the number of virus specimens available for antiviral resistance testing is limited in both overall number tested and in the number of states that have submitted specimens. Currently, data on antiviral resistance, as well as the limited information on which influenza virus types or subtypes will circulate during the season, are insufficient to provide an indication of the prevalence of oseltamivir or adamantane (amantadine and rimantadine) resistance at a national or regional level. CDC has solicited a representative sample of viruses from WHO collaborating laboratories in the United States, and more specimens are expected as influenza activity increases.

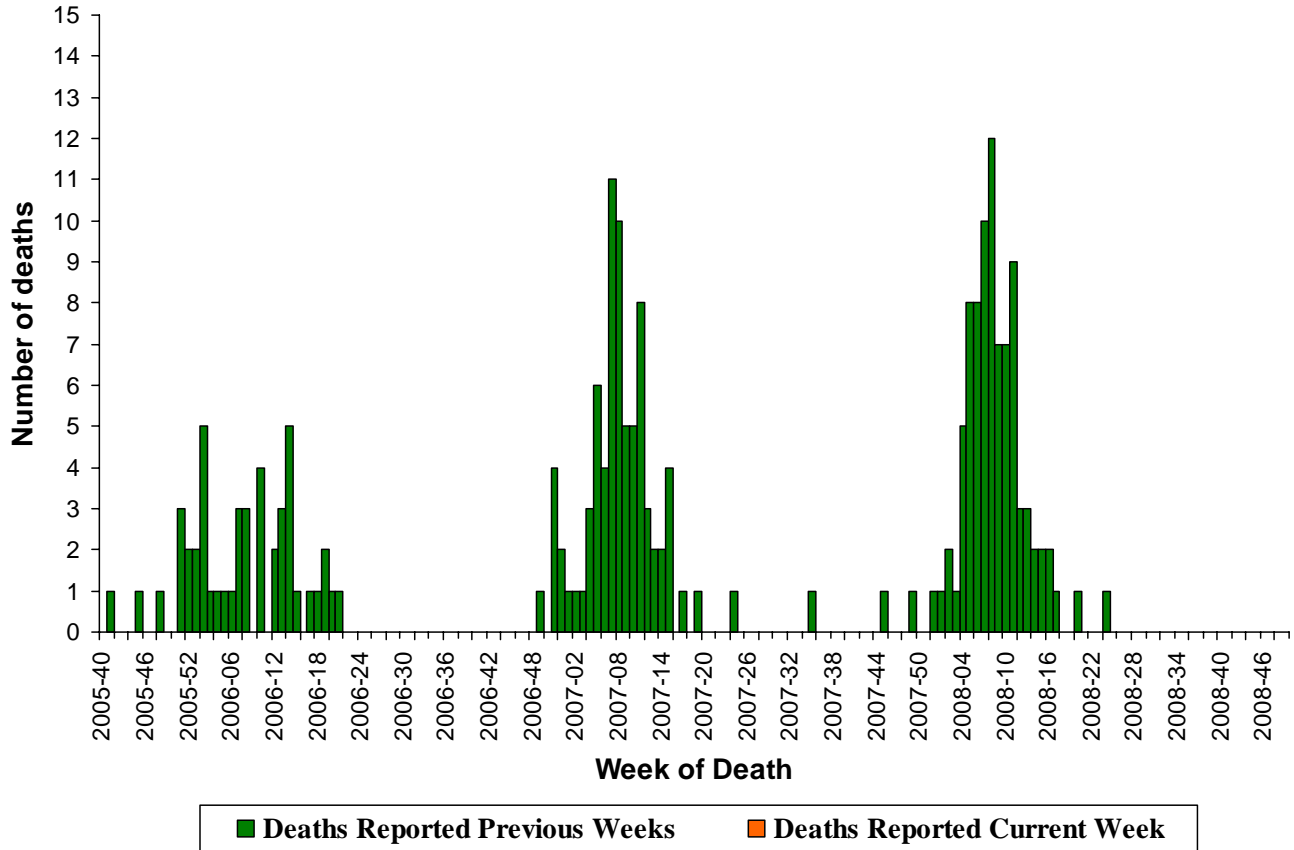
Pneumonia and Influenza (P&I) Mortality Surveillance: During week 47, 6.4% of all deaths reported through the 122-Cities Mortality Reporting System were due to P&I. This percentage is below the epidemic threshold of 7.0% for week 47

Pneumonia and Influenza Mortality for 122 U.S. Cities Week ending 11/22/2008



Influenza-Associated Pediatric Mortality: No influenza-associated pediatric deaths were reported during week 47.

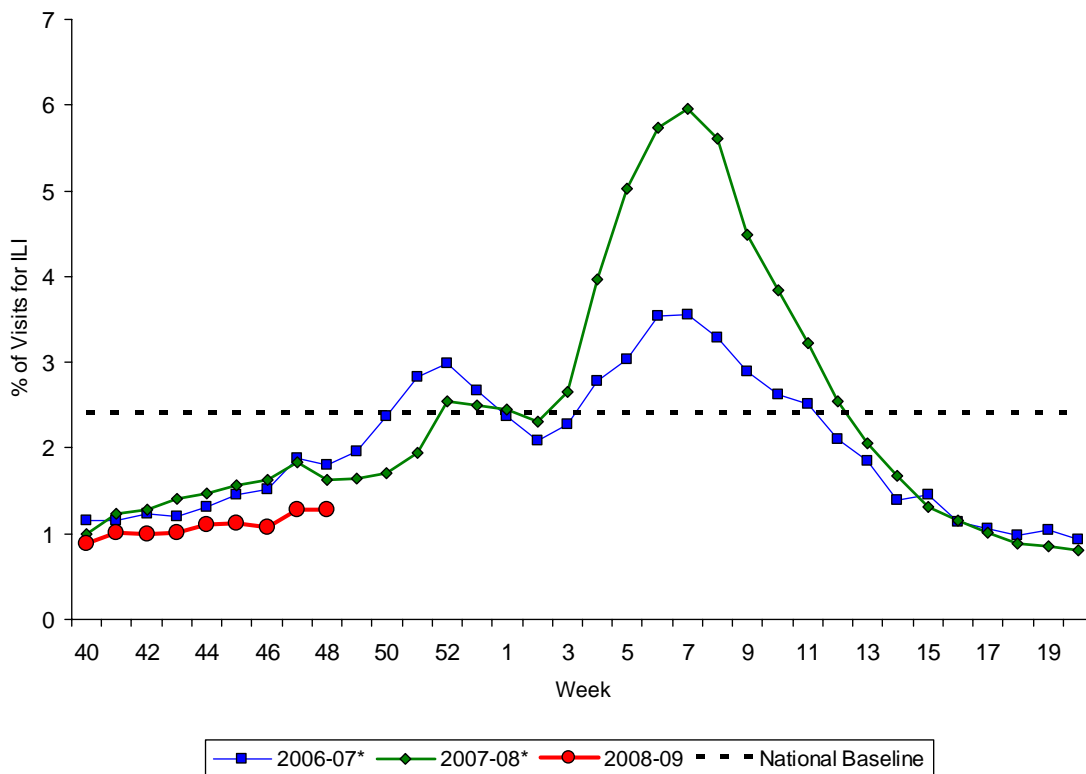
Number of Influenza-Associated Pediatric Deaths by Week of Death:
2005-06 season to present



Influenza-Associated Hospitalizations: Laboratory-confirmed influenza-associated hospitalizations are monitored in two population-based surveillance networks: the Emerging Infections Program (EIP) and the New Vaccine Surveillance Network (NVSN). EIP and NVSN estimated rates of hospitalization for influenza will be reported every two weeks starting later this season.

Outpatient Illness Surveillance: During week 47, 1.3% of patient visits reported through the U.S. Outpatient Influenza-like Illness Surveillance Network (ILINet) (formerly known as the U.S. Influenza Sentinel Provider Surveillance Network) were due to influenza-like illness (ILI). This percentage is less than the national baseline of 2.4%. On a regional level, the percentage of visits for ILI ranged from 0.6% to 2.4%. All nine regions reported percentages of visits for ILI below their respective region-specific baselines.

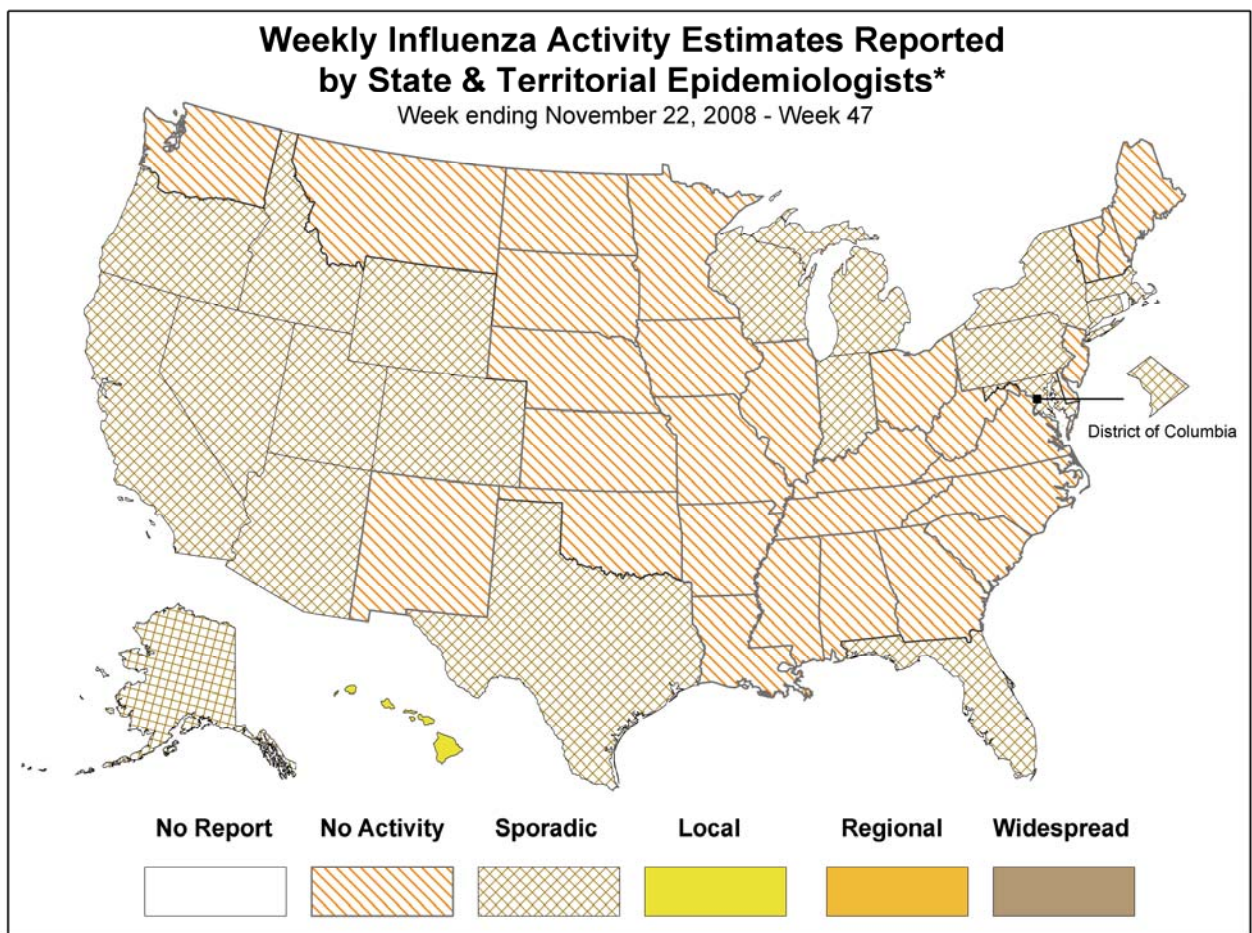
Percentage of Visits for Influenza-like Illness (ILI) Reported by the U.S. Outpatient Influenza-like Illness Surveillance Network (ILINet), National Summary, 2008-09 and Previous Two Seasons



*There was no week 53 during the 2006-07 and 2007-08 seasons, therefore the week 53 data point for those seasons is an average of weeks 52 and 1.

Geographic Spread of Influenza as Assessed by State and Territorial Epidemiologists: During week 47 the following influenza activity was reported:

- Local influenza activity was reported by one state (Hawaii)
- Sporadic activity was reported in the District of Columbia and 19 states (Alaska, Arizona, California, Colorado, Connecticut, Florida, Idaho, Indiana, Massachusetts, Maryland, Michigan, Nevada, New York, Oregon, Pennsylvania, Texas, Utah, Wisconsin, and Wyoming).
- No influenza activity was reported in 29 states (Alabama, Arkansas, Delaware, Georgia, Illinois, Iowa, Kansas, Kentucky, Louisiana, Maine, Minnesota, Mississippi, Missouri, Montana, Nebraska, New Hampshire, New Jersey, New Mexico, North Carolina, North Dakota, Ohio, Oklahoma, South Carolina, South Dakota, Tennessee, Vermont, Virginia, Washington, and West Virginia).
- One state (Rhode Island) did not report.



* This map indicates geographic spread & does not measure the severity of influenza activity

A description of surveillance methods is available at: <http://www.cdc.gov/flu/weekly/fluactivity.htm>

Report prepared: November 26, 2008

**WHO Collaborating Laboratory Reports
2008-2009 Influenza Season
Update: Friday, November 28, 2008
Summary for All Regions**

CDC Week	No. of Reporting Laboratories	No. of Specimens Tested	No. (%) of Specimens Positive for Influenza	Positive specimens by Type/Subtype			
				A(H1)	A(H3)	A-Unk	B
200840	108	2503	17 (0.68)	2	0	9	6
200841	106	2502	19 (0.76)	4	4	6	5
200842	108	2635	35 (1.33)	12	3	15	5
200843	105	2863	58 (2.03)	22	2	20	14
200844	101	2846	31 (1.09)	9	1	18	3
200845	100	3309	55 (1.66)	20	2	24	9
200846	83	2495	42 (1.68)	22	2	10	8
200847	60	2080	52 (2.50)	10	0	26	16
Totals	771	21233	309 (1.46)	101	14	128	66

**WHO Collaborating Laboratory Reports
2008-2009 Influenza Season
Update: Friday, November 28, 2008
Summary by Region**

New England Region

CDC Week	No. of Reporting Laboratories	No. of Specimens Tested	No. (%) of Specimens Positive for Influenza	Positive specimens by Type / Subtype			
				A(H1)	A(H3)	A-Unk	B
200840	7	160	0 (0.00)	0	0	0	0
200841	7	168	0 (0.00)	0	0	0	0
200842	7	178	0 (0.00)	0	0	0	0
200843	7	202	0 (0.00)	0	0	0	0
200844	7	228	0 (0.00)	0	0	0	0
200845	6	248	2 (0.81)	0	1	0	1
200846	5	247	0 (0.00)	0	0	0	0
200847	4	268	2 (0.75)	0	0	2	0
Totals	50	1699	4 (0.24)	0	1	2	1

Mid-Atlantic Region

CDC Week	No. of Reporting Laboratories	No. of Specimens Tested	No. (%) of Specimens Positive for Influenza	Positive specimens by Type / Subtype			
				A(H1)	A(H3)	A-Unk	B
200840	14	434	0 (0.00)	0	0	0	0
200841	13	342	1 (0.29)	0	0	1	0
200842	14	380	0 (0.00)	0	0	0	0
200843	13	362	2 (0.55)	1	0	0	1
200844	15	446	1 (0.22)	0	0	1	0
200845	15	593	0 (0.00)	0	0	0	0
200846	12	253	1 (0.40)	1	0	0	0
200847	8	122	0 (0.00)	0	0	0	0
Totals	104	2932	5 (0.17)	2	0	2	1

East North Central Region

CDC Week	No. of Reporting Laboratories	No. of Specimens Tested	No. (%) of Specimens Positive for Influenza	Positive specimens by Type / Subtype			
				A(H1)	A(H3)	A-Unk	B
200840	10	136	0 (0.00)	0	0	0	0
200841	9	136	0 (0.00)	0	0	0	0
200842	10	130	0 (0.00)	0	0	0	0
200843	11	127	3 (2.36)	2	0	0	1
200844	11	107	0 (0.00)	0	0	0	0
200845	11	102	4 (3.92)	1	0	1	2
200846	10	38	2 (5.26)	0	0	1	1
200847	7	48	4 (8.33)	1	0	1	2
Totals	79	824	13 (1.58)	4	0	3	6

WHO Collaborating Laboratory Reports
2008-2009 Influenza Season
Update: Friday, November 28, 2008
Summary by Region

West North Central Region

CDC Week	No. of Reporting Laboratories	No. of Specimens Tested	No. (%) of Specimens Positive for Influenza	Positive specimens by Type / Subtype			
				A(H1)	A(H3)	A-Unk	B
200840	11	206	0 (0.00)	0	0	0	0
200841	11	224	0 (0.00)	0	0	0	0
200842	11	260	0 (0.00)	0	0	0	0
200843	11	309	0 (0.00)	0	0	0	0
200844	10	341	0 (0.00)	0	0	0	0
200845	11	425	3 (0.71)	0	0	2	1
200846	7	324	0 (0.00)	0	0	0	0
200847	6	302	0 (0.00)	0	0	0	0
Totals	78	2391	3 (0.13)	0	0	2	1

South Atlantic Region

CDC Week	No. of Reporting Laboratories	No. of Specimens Tested	No. (%) of Specimens Positive for Influenza	Positive specimens by Type / Subtype			
				A(H1)	A(H3)	A-Unk	B
200840	24	524	5 (0.95)	0	0	2	3
200841	24	558	1 (0.18)	0	0	0	1
200842	24	618	8 (1.29)	0	0	7	1
200843	24	720	16 (2.22)	2	2	6	6
200844	22	725	8 (1.10)	0	0	6	2
200845	20	706	8 (1.13)	1	0	7	0
200846	18	802	14 (1.75)	3	0	6	5
200847	14	691	18 (2.60)	2	0	11	5
Totals	170	5344	78 (1.46)	8	2	45	23

East South Central Region

CDC Week	No. of Reporting Laboratories	No. of Specimens Tested	No. (%) of Specimens Positive for Influenza	Positive specimens by Type / Subtype			
				A(H1)	A(H3)	A-Unk	B
200840	5	89	0 (0.00)	0	0	0	0
200841	5	89	0 (0.00)	0	0	0	0
200842	5	100	0 (0.00)	0	0	0	0
200843	5	104	0 (0.00)	0	0	0	0
200844	6	117	0 (0.00)	0	0	0	0
200845	5	119	0 (0.00)	0	0	0	0
200846	6	133	0 (0.00)	0	0	0	0
200847	3	2	0 (0.00)	0	0	0	0
Totals	40	753	0 (0.00)	0	0	0	0

WHO Collaborating Laboratory Reports
2008-2009 Influenza Season
Update: Friday, November 28, 2008
Summary by Region

West South Central Region

CDC Week	No. of Reporting Laboratories	No. of Specimens Tested	No. (%) of Specimens Positive for Influenza	Positive specimens by Type / Subtype			
				A(H1)	A(H3)	A-Unk	B
200840	14	357	3 (0.84)	0	0	3	0
200841	13	390	2 (0.51)	0	0	2	0
200842	13	365	5 (1.37)	0	0	3	2
200843	11	323	9 (2.79)	0	0	4	5
200844	10	293	7 (2.39)	2	0	5	0
200845	9	382	9 (2.36)	3	0	2	4
200846	6	199	5 (2.51)	2	0	2	1
200847	6	317	18 (5.68)	3	0	7	8
Totals	82	2626	58 (2.21)	10	0	28	20

Mountain Region

CDC Week	No. of Reporting Laboratories	No. of Specimens Tested	No. (%) of Specimens Positive for Influenza	Positive specimens by Type / Subtype			
				A(H1)	A(H3)	A-Unk	B
200840	10	101	2 (1.98)	0	0	1	1
200841	11	109	7 (6.42)	0	4	1	2
200842	11	123	3 (2.44)	0	2	1	0
200843	11	104	0 (0.00)	0	0	0	0
200844	9	149	1 (0.67)	0	1	0	0
200845	11	189	1 (0.53)	0	0	0	1
200846	10	192	1 (0.52)	0	0	1	0
200847	8	212	5 (2.36)	2	0	3	0
Totals	81	1179	20 (1.70)	2	7	7	4

Pacific Region

CDC Week	No. of Reporting Laboratories	No. of Specimens Tested	No. (%) of Specimens Positive for Influenza	Positive specimens by Type / Subtype			
				A(H1)	A(H3)	A-Unk	B
200840	13	496	7 (1.41)	2	0	3	2
200841	13	486	8 (1.65)	4	0	2	2
200842	13	481	19 (3.95)	12	1	4	2
200843	12	612	28 (4.58)	17	0	10	1
200844	11	440	14 (3.18)	7	0	6	1
200845	12	545	28 (5.14)	15	1	12	0
200846	9	307	19 (6.19)	16	2	0	1
200847	4	118	5 (4.24)	2	0	2	1
Totals	87	3485	128 (3.67)	75	4	39	10

**WHO Collaborating Laboratory Reports
2008-2009 Influenza Season
Update: Friday, November 28, 2008
Summary for All Regions**

CDC Week	No. of Reporting Laboratories	No. of Specimens Tested	No. (%) of Specimens Positive for Influenza	No. (%) Positive specimens by Type / Subtype				
				A(H1)	A(H3)	Asubtype	A	
200840	108	2503	17 (0.68)	100	0	18	65	35
200841	106	2502	19 (0.76)	50	50	57	74	26
200842	108	2635	35 (1.33)	80	20	50	86	14
200843	105	2863	58 (2.03)	92	8	55	76	24
200844	101	2846	31 (1.09)	90	10	36	90	10
200845	100	3309	55 (1.66)	91	9	48	84	16
200846	83	2495	42 (1.68)	92	8	71	81	19
200847	60	2080	52 (2.50)	100	0	28	69	31
Totals	771	21233	309 (1.46)	88	12	47	79	21

**WHO Collaborating Laboratory Reports
2008-2009 Influenza Season
Update: Friday, November 28, 2008
Summary By Region**

New England Region

CDC Week	No. of Reporting Laboratories	No. of Specimens Tested	No. (%) of Specimens Positive for Influenza	No. (%) Positive specimens by Type/Subtype				A	
				A(H1)	A(H3)	Asubtype	A		
200840	7	160	0 (0.00)	0	0	0	0	0	
200841	7	168	0 (0.00)	0	0	0	0	0	
200842	7	178	0 (0.00)	0	0	0	0	0	
200843	7	202	0 (0.00)	0	0	0	0	0	
200844	7	228	0 (0.00)	0	0	0	0	0	
200845	6	248	2 (0.81)	0	100	100	50	50	
200846	5	247	0 (0.00)	0	0	0	0	0	
200847	4	268	2 (0.75)	0	0	0	100	0	
Totals	50	1699	4 (0.24)	0	100	33	75	25	

Mid-Atlantic Region

CDC Week	No. of Reporting Laboratories	No. of Specimens Tested	No. (%) of Specimens Positive for Influenza	No. (%) Positive specimens by Type/Subtype				A	
				A(H1)	A(H3)	Asubtype	A		
200840	14	434	0 (0.00)	0	0	0	0	0	
200841	13	342	1 (0.29)	0	0	0	100	0	
200842	14	380	0 (0.00)	0	0	0	0	0	
200843	13	362	2 (0.55)	100	0	100	50	50	
200844	15	446	1 (0.22)	0	0	0	100	0	
200845	15	593	0 (0.00)	0	0	0	0	0	
200846	12	253	1 (0.40)	100	0	100	100	0	
200847	8	122	0 (0.00)	0	0	0	0	0	
Totals	104	2932	5 (0.17)	100	0	50	80	20	

East North Central Region

CDC Week	No. of Reporting Laboratories	No. of Specimens Tested	No. (%) of Specimens Positive for Influenza	No. (%) Positive specimens by Type/Subtype				A	
				A(H1)	A(H3)	Asubtype	A		
200840	10	136	0 (0.00)	0	0	0	0	0	
200841	9	136	0 (0.00)	0	0	0	0	0	
200842	10	130	0 (0.00)	0	0	0	0	0	
200843	11	127	3 (2.36)	100	0	100	67	33	
200844	11	107	0 (0.00)	0	0	0	0	0	
200845	11	102	4 (3.92)	100	0	50	50	50	
200846	10	38	2 (5.26)	0	0	0	50	50	
200847	7	48	4 (8.33)	100	0	50	50	50	
Totals	79	824	13 (1.58)	100	0	57	54	46	

WHO Collaborating Laboratory Reports
2008-2009 Influenza Season
Update: Friday, November 28, 2008
Summary By Region

West North Central Region

CDC Week	No. of Reporting Laboratories	No. of Specimens Tested	No. (%) of Specimens Positive for Influenza	No. (%) Positive specimens by Type/Subtype				A	
				A(H1)	A(H3)	Asubtype	A		
200840	11	206	0 (0.00)	0	0	0	0	0	
200841	11	224	0 (0.00)	0	0	0	0	0	
200842	11	260	0 (0.00)	0	0	0	0	0	
200843	11	309	0 (0.00)	0	0	0	0	0	
200844	10	341	0 (0.00)	0	0	0	0	0	
200845	11	425	3 (0.71)	0	0	0	67	33	
200846	7	324	0 (0.00)	0	0	0	0	0	
200847	6	302	0 (0.00)	0	0	0	0	0	
Totals	78	2391	3 (0.13)	0	0	0	67	33	

South Atlantic Region

CDC Week	No. of Reporting Laboratories	No. of Specimens Tested	No. (%) of Specimens Positive for Influenza	No. (%) Positive specimens by Type/Subtype				A	
				A(H1)	A(H3)	Asubtype	A		
200840	24	524	5 (0.95)	0	0	0	40	60	
200841	24	558	1 (0.18)	0	0	0	0	100	
200842	24	618	8 (1.29)	0	0	0	88	12	
200843	24	720	16 (2.22)	50	50	40	62	38	
200844	22	725	8 (1.10)	0	0	0	75	25	
200845	20	706	8 (1.13)	100	0	12	100	0	
200846	18	802	14 (1.75)	100	0	33	64	36	
200847	14	691	18 (2.60)	100	0	15	72	28	
Totals	170	5344	78 (1.46)	80	20	18	71	29	

East South Central Region

CDC Week	No. of Reporting Laboratories	No. of Specimens Tested	No. (%) of Specimens Positive for Influenza	No. (%) Positive specimens by Type/Subtype				A	
				A(H1)	A(H3)	Asubtype	A		
200840	5	89	0 (0.00)	0	0	0	0	0	
200841	5	89	0 (0.00)	0	0	0	0	0	
200842	5	100	0 (0.00)	0	0	0	0	0	
200843	5	104	0 (0.00)	0	0	0	0	0	
200844	6	117	0 (0.00)	0	0	0	0	0	
200845	5	119	0 (0.00)	0	0	0	0	0	
200846	6	133	0 (0.00)	0	0	0	0	0	
200847	3	2	0 (0.00)	0	0	0	0	0	
Totals	40	753	0 (0.00)	0	0	0	0	0	

**WHO Collaborating Laboratory Reports
2008-2009 Influenza Season
Update: Friday, November 28, 2008
Summary By Region**

West South Central Region

CDC Week	No. of Reporting Laboratories	No. of Specimens Tested	No. (%) of Specimens Positive for Influenza	No. (%) Positive specimens by Type/Subtype				
				A(H1)	A(H3)	Asubtype	A	
200840	14	357	3 (0.84)	0	0	0	100	0
200841	13	390	2 (0.51)	0	0	0	100	0
200842	13	365	5 (1.37)	0	0	0	60	40
200843	11	323	9 (2.79)	0	0	0	44	56
200844	10	293	7 (2.39)	100	0	29	100	0
200845	9	382	9 (2.36)	100	0	60	56	44
200846	6	199	5 (2.51)	100	0	50	80	20
200847	6	317	18 (5.68)	100	0	30	56	44
Totals	82	2626	58 (2.21)	100	0	26	66	34

Mountain Region

CDC Week	No. of Reporting Laboratories	No. of Specimens Tested	No. (%) of Specimens Positive for Influenza	No. (%) Positive specimens by Type/Subtype				
				A(H1)	A(H3)	Asubtype	A	
200840	10	101	2 (1.98)	0	0	0	50	50
200841	11	109	7 (6.42)	0	100	80	71	29
200842	11	123	3 (2.44)	0	100	67	100	0
200843	11	104	0 (0.00)	0	0	0	0	0
200844	9	149	1 (0.67)	0	100	100	100	0
200845	11	189	1 (0.53)	0	0	0	0	100
200846	10	192	1 (0.52)	0	0	0	100	0
200847	8	212	5 (2.36)	100	0	40	100	0
Totals	81	1179	20 (1.70)	22	78	56	80	20

Pacific Region

CDC Week	No. of Reporting Laboratories	No. of Specimens Tested	No. (%) of Specimens Positive for Influenza	No. (%) Positive specimens by Type/Subtype				
				A(H1)	A(H3)	Asubtype	A	
200840	13	496	7 (1.41)	100	0	40	71	29
200841	13	486	8 (1.65)	100	0	67	75	25
200842	13	481	19 (3.95)	92	8	76	89	11
200843	12	612	28 (4.58)	100	0	63	96	4
200844	11	440	14 (3.18)	100	0	54	93	7
200845	12	545	28 (5.14)	94	6	57	100	0
200846	9	307	19 (6.19)	89	11	100	95	5
200847	4	118	5 (4.24)	100	0	50	80	20
Totals	87	3485	128 (3.67)	95	5	67	92	8

**Summary of WHO Collaborating Laboratory
Reported By Age
Update: Friday, November 28, 2008**

Cumulative Season Summary

<u>Age Groups</u>	<u>Total</u>	<u>A(H1)</u>	<u>A(H3)</u>	<u>A-Unk</u>	<u>B</u>
<1	7.0	12.0	0.0	3.0	5.0
1 - 4	6.0	17.0	36.0	2.0	5.0
5 - 24	6.0	50.0	21.0	8.0	23.0
25 - 44	4.0	14.0	14.0	0.0	5.0
45 - 64	6.0	4.0	14.0	2.0	3.0
65 +	5.0	1.0	0.0	1.0	2.0

PNEUMONIA AND INFLUENZA MORTALITY
(Reported from 122 U.S. Cities)
For the Week Ending November 22, 2008
(Week 47)

YEAR	WEEK	% OF DEATHS	EXPECTED	THRESH.	TOTAL DEATHS	PNEUMONIA DEATHS	INFLUENZA DEATHS
2008	40	6.28	5.99	6.43	11153	700	0
2008	41	6.00	6.06	6.49	11143	669	0
2008	42	6.31	6.13	6.57	10900	688	0
2008	43	6.55	6.21	6.65	11326	742	0
2008	44	6.64	6.30	6.74	11186	743	0
2008	45	6.29	6.40	6.83	10829	681	0
2008	46	6.35	6.50	6.93	10639	676	0
2008	47	6.35	6.60	7.03	11296	717	0

**Sentinel Physician Surveillance
2008-2009 Influenza Season
Update: Friday, November 28, 2008
Summary for All Regions**

National Baseline: 2.4%

CDC Week	Number Reporting	Patient Visits	Total ILI	% Unweighted ILI	% Weighted ILI
200840	1297	493612	4383	0.888	0.878
200841	1366	514334	5468	1.063	1.004
200842	1391	530877	5316	1.001	0.998
200843	1391	545928	5594	1.025	1.011
200844	1370	535718	6114	1.141	1.103
200845	1340	534441	6449	1.207	1.115
200846	1234	493819	6212	1.258	1.077
200847	929	397562	5685	1.430	1.281
Totals	10318	4046291	45221	1.118	1.055

**Sentinel Physician Surveillance
2008-2009 Influenza Season
Update: Friday, November 28, 2008
Summary by Region**

New England Region (Baseline: 1.5 %)

CDC Week	Number Reporting	Patient Visits	Total ILI	% Unweighted ILI	% Weighted ILI
200840	104	30314	138	0.455	0.461
200841	112	31733	174	0.548	0.614
200842	113	30932	126	0.407	0.459
200843	114	34837	207	0.594	0.593
200844	112	32498	212	0.652	0.667
200845	106	31473	272	0.864	0.988
200846	91	27182	212	0.780	0.891
200847	71	19660	185	0.941	1.376
Totals	823	238629	1526	0.639	0.698

Mid-Atlantic Region (Baseline: 2.9%)

CDC Week	Number Reporting	Patient Visits	Total ILI	% Unweighted ILI	% Weighted ILI
200840	74	94667	1002	1.058	0.525
200841	89	96997	1178	1.214	0.857
200842	94	100261	1131	1.128	0.617
200843	99	100542	1138	1.132	0.674
200844	97	94841	1132	1.194	0.759
200845	102	102000	1285	1.260	0.915
200846	89	95280	1329	1.395	0.914
200847	60	83416	1352	1.621	1.272
Totals	704	768004	9547	1.243	0.788

East North Central Region (Baseline: 1.9%)

CDC Week	Number Reporting	Patient Visits	Total ILI	% Unweighted ILI	% Weighted ILI
200840	196	62946	480	0.763	0.585
200841	206	65541	482	0.735	0.587
200842	210	68167	530	0.778	0.604
200843	212	69065	606	0.877	0.717
200844	207	65759	507	0.771	0.658
200845	205	67138	700	1.043	0.873
200846	184	59912	567	0.946	0.831
200847	140	48077	454	0.944	0.817
Totals	1560	506605	4326	0.854	0.704

**Sentinel Physician Surveillance
2008-2009 Influenza Season
Update: Friday, November 28, 2008
Summary by Region**

West North Central Region (Baseline: 1.7%)

CDC Week	Number Reporting	Patient Visits	Total ILI	% Unweighted ILI	% Weighted ILI
200840	95	24462	138	0.564	0.348
200841	94	21994	125	0.568	0.331
200842	99	25605	172	0.672	0.519
200843	98	24891	166	0.667	0.420
200844	93	24739	152	0.614	0.528
200845	94	24980	142	0.568	0.528
200846	80	18760	124	0.661	0.419
200847	57	14110	99	0.702	0.625
Totals	710	179541	1118	0.623	0.460

South Atlantic Region (Baseline: 2.2%)

CDC Week	Number Reporting	Patient Visits	Total ILI	% Unweighted ILI	% Weighted ILI
200840	321	133279	1091	0.819	0.854
200841	349	163173	1515	0.928	0.943
200842	349	160791	1495	0.930	0.879
200843	354	166912	1729	1.036	0.993
200844	356	164870	1968	1.194	1.171
200845	333	166472	1964	1.180	1.056
200846	329	157767	2113	1.339	1.241
200847	283	133813	1887	1.410	1.242
Totals	2674	1247077	13762	1.104	1.053

East South Central Region (Baseline: 2.5%)

CDC Week	Number Reporting	Patient Visits	Total ILI	% Unweighted ILI	% Weighted ILI
200840	100	35670	376	1.054	1.185
200841	102	34742	733	2.110	1.457
200842	92	29561	537	1.817	1.731
200843	99	32431	424	1.307	1.145
200844	92	37725	763	2.023	1.834
200845	99	32305	863	2.671	1.825
200846	89	31561	759	2.405	1.647
200847	74	19034	851	4.471	2.439
Totals	747	253029	5306	2.097	1.635

**Sentinel Physician Surveillance
2008-2009 Influenza Season
Update: Friday, November 28, 2008
Summary by Region**

West South Central Region (Baseline: 4.8%)

CDC Week	Number Reporting	Patient Visits	Total ILI	% Unweighted ILI	% Weighted ILI
200840	107	25029	396	1.582	1.386
200841	122	27769	466	1.678	1.629
200842	125	27263	394	1.445	1.411
200843	108	24970	444	1.778	1.580
200844	119	27931	605	2.166	2.141
200845	108	25683	449	1.748	1.727
200846	110	26235	396	1.509	1.512
200847	72	20220	383	1.894	1.951
Totals	871	205100	3533	1.723	1.673

Mountain Region (Baseline: 1.5%)

CDC Week	Number Reporting	Patient Visits	Total ILI	% Unweighted ILI	% Weighted ILI
200840	144	64971	464	0.714	0.811
200841	137	49907	469	0.940	0.730
200842	153	64838	558	0.861	0.845
200843	154	69011	534	0.774	0.803
200844	146	66355	537	0.809	0.829
200845	146	63365	522	0.824	0.855
200846	135	59291	527	0.889	1.047
200847	90	47584	306	0.643	0.645
Totals	1105	485322	3917	0.807	0.819

Pacific Region (Baseline: 3.0%)

CDC Week	Number Reporting	Patient Visits	Total ILI	% Unweighted ILI	% Weighted ILI
200840	156	22274	298	1.338	1.372
200841	155	22478	326	1.450	1.495
200842	156	23459	373	1.590	1.688
200843	153	23269	346	1.487	1.593
200844	148	21000	238	1.133	1.211
200845	147	21025	252	1.199	1.278
200846	127	17831	185	1.038	1.073
200847	82	11648	168	1.442	1.391
Totals	1124	162984	2186	1.341	1.410

Summary of Influenza - like Illness By Age
U.S. Sentinel Physician Influenza Surveillance
Update: Friday, November 28, 2008

Cumulative Season Summary

<u>Age Groups</u>	<u>Total</u>	<u>% of All ILI</u>
0 - 4	14539	32.2
5 - 24	16541	36.6
25 - 64	11540	25.5
65 +	2601	5.8
Total	45221	100.0

Summary For Most Recent Three Weeks

11/2/2008 - 11/22/2008

<u>Age Groups</u>	<u>Total</u>	<u>% of All ILI</u>
0 - 4	6127	33.4
5 - 24	6488	35.4
25 - 64	4694	25.6
65 +	1037	5.7
Total	18346	100.0

*% of all ILI by age group is the proportion of ILI cases in each age group out of all reported ILI cases

WEEKLY INFLUENZA ACTIVITY ESTIMATE
 REPORTED BY STATE AND TERRITORIAL HEALTH DEPARTMENTS
 UNITED STATES INFLUENZA SURVEILLANCE SEASON 2008-09

UPDATE - Week 47 (November 16-22, 2008)

REPORTING AREA	WEEK 43	WEEK 44	WEEK 45	WEEK 46	WEEK 47
REGION 1: NEW ENGLAND					
MAINE	NONE	NONE	NONE	NONE	NONE
N.H.	NONE	NONE	NONE	NONE	NONE
VERMONT	NONE	NONE	NONE	NONE	NONE
MASS.	SPORADIC	SPORADIC	SPORADIC	SPORADIC	SPORADIC
R.I.	NONE	NONE	NONE	SPORADIC	NO REPT.
CONN.	SPORADIC	SPORADIC	SPORADIC	SPORADIC	SPORADIC
REGION 2: MID. ATLANTIC					
NEW YORK	SPORADIC	SPORADIC	SPORADIC	SPORADIC	SPORADIC
NEW JERSEY	NONE	NONE	NONE	NONE	NONE
PENN.	SPORADIC	SPORADIC	SPORADIC	SPORADIC	SPORADIC
REGION 3: E.N. CENTRAL					
OHIO	NONE	NONE	NONE	NONE	NONE
INDIANA	SPORADIC	SPORADIC	SPORADIC	SPORADIC	SPORADIC
ILLINOIS	NONE	SPORADIC	SPORADIC	SPORADIC	NONE
MICHIGAN	NONE	NONE	NONE	SPORADIC	SPORADIC
WISCONSIN	NONE	NONE	SPORADIC	SPORADIC	SPORADIC
REGION 4: W.N. CENTRAL					
MINNESOTA	NONE	NONE	NONE	NONE	NONE
IOWA	NONE	NONE	NONE	NONE	NONE
MISSOURI	NONE	NONE	NONE	NONE	NONE
NORTH DAKOTA	NONE	NONE	NONE	NONE	NONE
SOUTH DAKOTA	NONE	NONE	NONE	NONE	NONE
NEBRASKA	NONE	NONE	NONE	NONE	NONE
KANSAS	NONE	NONE	NONE	NONE	NONE
REGION 5: S. ATLANTIC					
DELAWARE	NONE	SPORADIC	NONE	NONE	NONE
MARYLAND	NONE	NONE	NONE	SPORADIC	SPORADIC
D.C.	NONE	SPORADIC	NONE	SPORADIC	SPORADIC
VIRGINIA	NONE	NONE	NONE	NONE	NONE
W. VIRGINIA	NONE	NONE	NONE	NONE	NONE
N. CAROLINA	NONE	NONE	NONE	NONE	NONE
S. CAROLINA	NONE	NONE	NONE	NONE	NONE
GEORGIA	NONE	NONE	NONE	NONE	NONE
FLORIDA	SPORADIC	NONE	NONE	SPORADIC	SPORADIC
REGION 6: E.S. CENTRAL					
KENTUCKY	NONE	NONE	NONE	NONE	NONE
TENNESSEE	NONE	NONE	NONE	NONE	NONE
ALABAMA	NONE	NONE	NONE	NONE	NONE
MISSISSIPPI	NONE	NONE	NONE	NONE	NONE

REGION 7: W.S. CENTRAL

ARKANSAS	NONE	NONE	NONE	NONE	NONE
LOUISIANA	NONE	NONE	NONE	NONE	NONE
OKLAHOMA	NONE	NONE	NONE	NONE	NONE
TEXAS	SPORADIC	SPORADIC	SPORADIC	SPORADIC	SPORADIC

REGION 8: MOUNTAIN

MONTANA	NONE	NONE	NONE	NONE	NONE
IDAHO	SPORADIC	SPORADIC	SPORADIC	SPORADIC	SPORADIC
WYOMING	SPORADIC	NONE	SPORADIC	SPORADIC	SPORADIC
COLORADO	NONE	SPORADIC	SPORADIC	SPORADIC	SPORADIC
NEW MEXICO	NONE	NONE	NONE	NONE	NONE
ARIZONA	NONE	NONE	NONE	NONE	SPORADIC
UTAH	SPORADIC	SPORADIC	SPORADIC	SPORADIC	SPORADIC
NEVADA	NONE	SPORADIC	SPORADIC	SPORADIC	SPORADIC

REGION 9: PACIFIC

WASHINGTON	NONE	NONE	NONE	SPORADIC	NONE
OREGON	NONE	NONE	NONE	NONE	SPORADIC
CALIFORNIA	SPORADIC	SPORADIC	SPORADIC	SPORADIC	SPORADIC
ALASKA	SPORADIC	SPORADIC	SPORADIC	SPORADIC	SPORADIC
HAWAII	SPORADIC	SPORADIC	LOCAL	SPORADIC	LOCAL

OTHER

GUAM	NO REPT.	NO REPT.	NO REPT.	NO REPT.	NO REPT.
PUERTO RICO	SPORADIC	SPORADIC	SPORADIC	SPORADIC	NO REPT.
VIRGIN IS.	NO REPT.	NO REPT.	NO REPT.	NO REPT.	NO REPT.

Activity Level	ILI activity*/Outbreaks		Laboratory data
No activity	Low	And	No lab confirmed cases [†]
	Not increased	And	Isolated lab-confirmed cases
Sporadic			OR
	Not increased	And	Lab confirmed outbreak in one institution [†]
Local	Increased ILI in 1 region**; ILI activity in other regions is not increased	And	Recent (within the past 3 weeks) lab evidence of influenza in region with increased ILI
			OR
Regional (doesn't apply to states with ≤4 regions)	2 or more institutional outbreaks (ILI or lab confirmed) in 1 region; ILI activity in other regions is not increased	And	Recent (within the past 3 weeks) lab evidence of influenza in region with the outbreaks; virus activity is no greater than sporadic in other regions
	Increased ILI in ≥2 but less than half of the regions	And	Recent (within the past 3 weeks) lab confirmed influenza in the affected regions
Regional (doesn't apply to states with ≤4 regions)			OR
	Institutional outbreaks (ILI or lab confirmed) in ≥2 and less than half of the regions	And	Recent (within the past 3 weeks) lab confirmed influenza in the affected regions
Widespread	Increased ILI and/or institutional outbreaks (ILI or lab confirmed) in at least half of the regions	And	Recent (within the past 3 weeks) lab confirmed influenza in the state.

* ILI activity can be assessed using a variety of data sources including sentinel providers, school/workplace absenteeism, and other syndromic surveillance systems that monitor influenza-like illness.

[†] Lab confirmed case = case confirmed by rapid diagnostic test, antigen detection, culture, or PCR.

[‡] Institution includes nursing home, hospital, prison, school, etc.

**Region: population under surveillance in a defined geographical subdivision of a state.