

2008-2009 Influenza Season
Week 41, ending October 11, 2008

(All data are preliminary and may change as more reports are received.)

Synopsis: During week 41 (October 5-11, 2008), a low level of influenza activity was reported in the United States.

- Seven (0.5%) specimens tested by US World Health Organization (WHO) and National Respiratory and Enteric Virus Surveillance System (NREVSS) collaborating laboratories and reported to CDC/Influenza Division were positive for influenza.
- The proportion of deaths attributed to pneumonia and influenza (P&I) was below the epidemic threshold.
- The proportion of outpatient visits for influenza-like illness (ILI) was below national and region-specific baseline levels.
- Seven states and Puerto Rico reported sporadic influenza activity; 43 states and the District of Columbia reported no influenza activity.

National and Regional Summary of Select Surveillance Components

	Data for current week			Data cumulative for the season				
	Out-patient ILI*	% positive for flu†	Number of jurisdictions reporting regional or widespread activity‡	A (H1)	A (H3)	A Unsub-typed	B	Pediatric Deaths
Nation	Normal	0.5%	0 of 51	0	0	14	7	0
New England	Normal	0%	0 of 6	0	0	0	0	0
Mid-Atlantic	Normal	0.3%	0 of 3	0	0	1	0	0
East North Central	Normal	0%	0 of 5	0	0	0	0	0
West North Central	Normal	0%	0 of 7	0	0	0	0	0
South Atlantic	Normal	0.3%	0 of 9	0	0	2	2	0
East South Central	Normal	0%	0 of 4	0	0	0	0	0
West South Central	Normal	0.7%	0 of 4	0	0	4	0	0
Mountain	Normal	2.9%	0 of 8	0	0	2	3	0
Pacific	Normal	1.4%	0 of 5	0	0	5	2	0

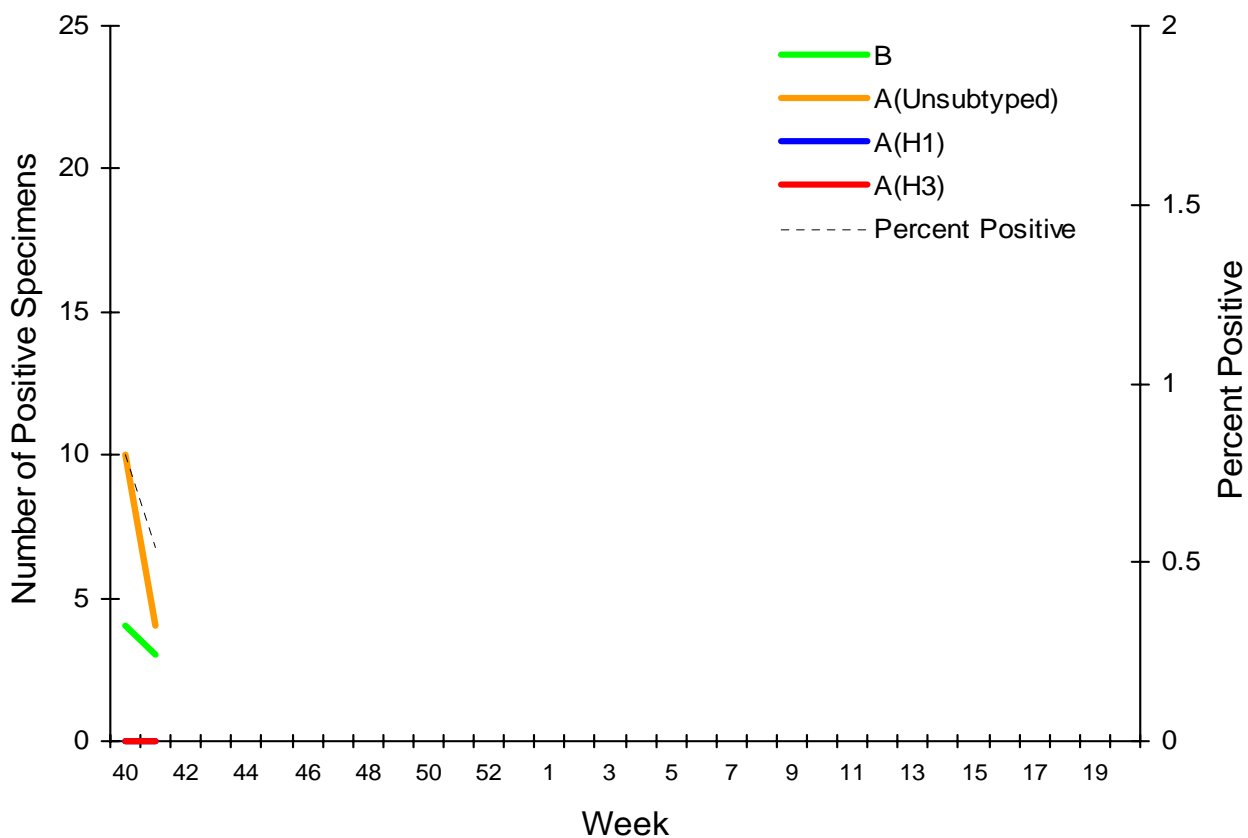
* Elevated means the % of visits for ILI is at or above the national or region-specific baseline

† National data are for current week; regional data are for the most recent three weeks

‡ Includes all 50 states and the District of Columbia

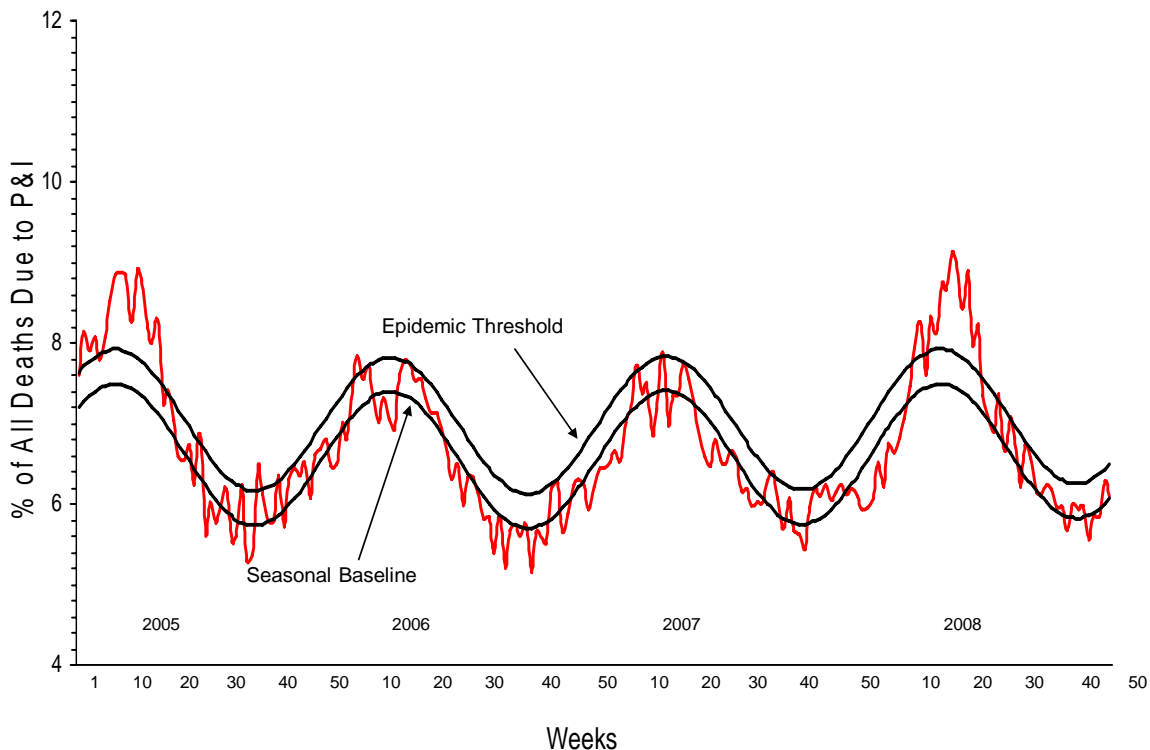
US Virologic Surveillance: During week 41, WHO and NREVSS laboratories located in all 50 states and Washington DC reported 1,293 specimens tested for influenza viruses, seven of which were positive: four influenza A viruses that were not subtyped (Mid-Atlantic, Mountain, Pacific, and West South Central regions) and three influenza B viruses (Mountain and Pacific regions).

U.S. WHO/NREVSS Collaborating Laboratories, National Summary, 2008-09



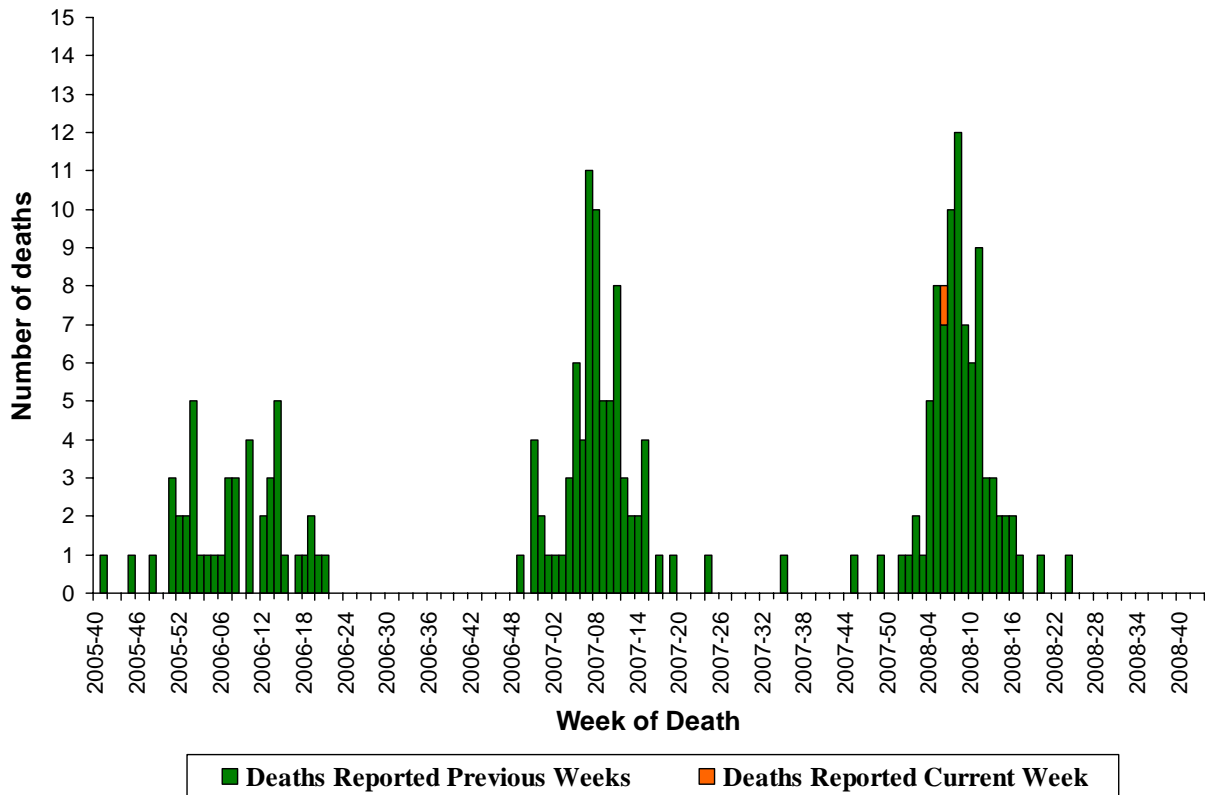
Pneumonia and Influenza (P&I) Mortality Surveillance: During week 41, 6.1% of all deaths reported through the 122-Cities Mortality Reporting System were due to P&I. This percentage is below the epidemic threshold of 6.5% for week 41.

Pneumonia and Influenza Mortality for 122 U.S. Cities Week ending 10/11/2008



Influenza-Associated Pediatric Mortality: One influenza-associated pediatric death was reported during week 41 from Georgia. This death occurred during the 2007-08 season and brings the total number of reported pediatric deaths occurring during that season to 87. No pediatric deaths have been reported for the 2008-09 season.

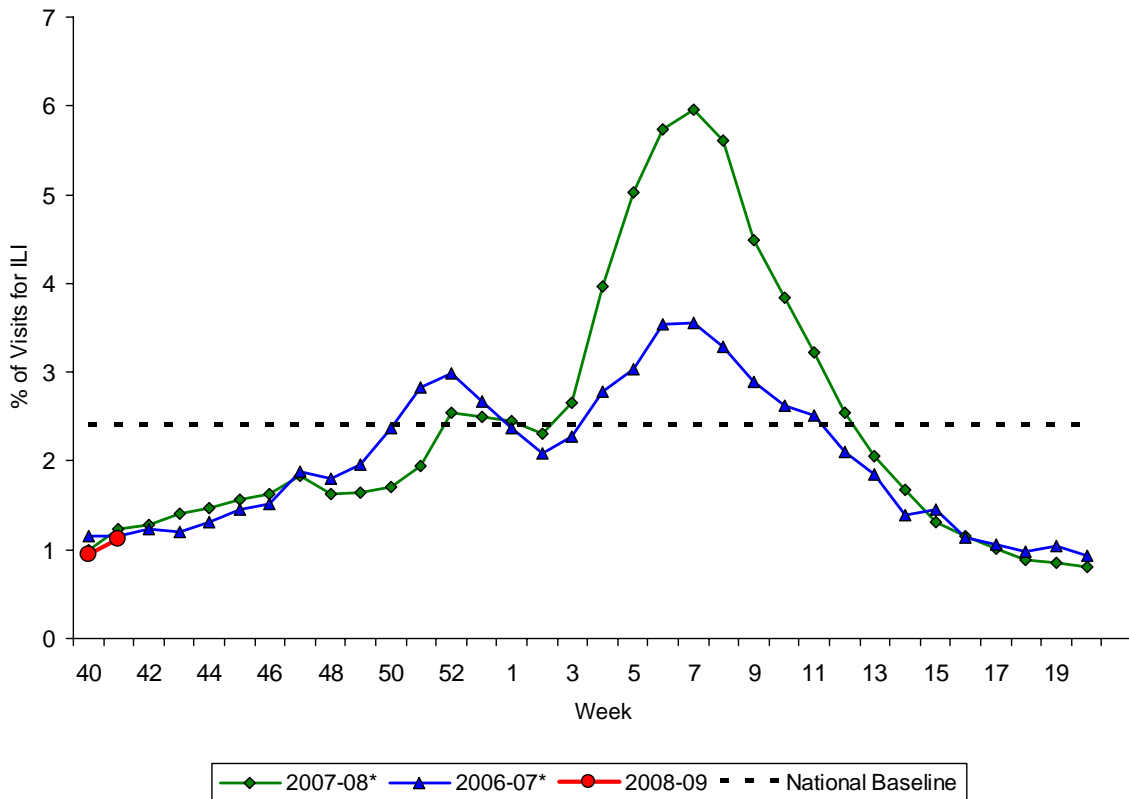
Number of Influenza-Associated Pediatric Deaths by Week of Death:
2005-06 season to present



Influenza-Associated Hospitalizations: Laboratory-confirmed influenza-associated hospitalizations are monitored in two population-based surveillance networks: the Emerging Infections Program (EIP) and the New Vaccine Surveillance Network (NVSN). EIP and NVSN estimated rates of hospitalization for influenza will be reported every two weeks starting later this season.

Outpatient Illness Surveillance: During week 41, 1.1% of patient visits reported through the US Outpatient Influenza-like Illness Surveillance Network (ILINet) (formally known as the US Influenza Sentinel Provider Surveillance Network) were due to influenza-like illness (ILI). This percentage is less than the national baseline of 2.4%. On a regional level, the percentage of visits for ILI ranged from 0.4% to 1.7%. All nine regions reported percentages of visits for ILI below their respective region-specific baselines.

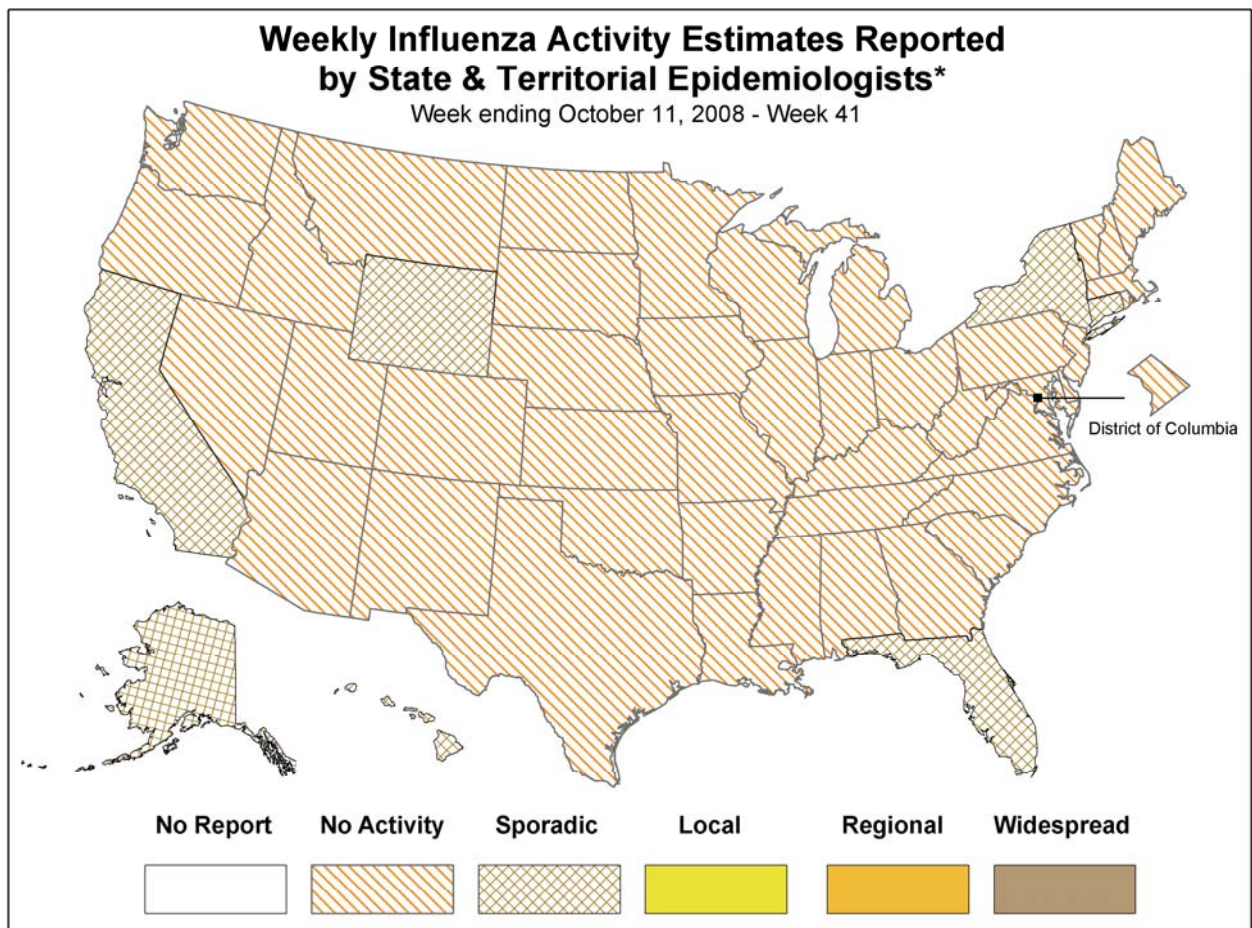
Percentage of Visits for Influenza-like Illness (ILI) Reported by the US Outpatient Influenza-like Illness Surveillance Network (ILINet), National Summary 2008-09 and Previous Two Seasons



*There was no week 53 during the 2006-07 and 2007-08 seasons, therefore the week 53 data point for those seasons is an average of weeks 52 and 1.

Geographic Spread of Influenza as Assessed by State and Territorial Epidemiologists: During week 41 the following influenza activity was reported:

- Sporadic activity was reported in Puerto Rico and seven states (Alaska, California, Connecticut, Florida, Hawaii, New York, and Wyoming).
- No influenza activity was reported in the District of Columbia and 43 states (Alabama, Arizona, Arkansas, Colorado, Delaware, Georgia, Idaho, Illinois, Indiana, Iowa, Kansas, Kentucky, Louisiana, Maine, Maryland, Massachusetts, Michigan, Minnesota, Mississippi, Missouri, Montana, Nebraska, Nevada, New Hampshire, New Jersey, New Mexico, North Carolina, North Dakota, Ohio, Oklahoma, Oregon, Pennsylvania, Rhode Island, South Carolina, South Dakota, Tennessee, Texas, Utah, Vermont, Virginia, Washington, Wisconsin, and West Virginia).



* This map indicates geographic spread & does not measure the severity of influenza activity

A description of surveillance methods is available at: <http://www.cdc.gov/flu/weekly/fluactivity.htm>

Report prepared: October 17, 2008