

# **Proposed Influenza Vaccination Recommendations for 2012-2013**

**Lisa Grohskopf, MD, MPH  
Influenza Division, NCIRD, CDC**

**Advisory Committee on Immunization Practices  
June 20, 2012**



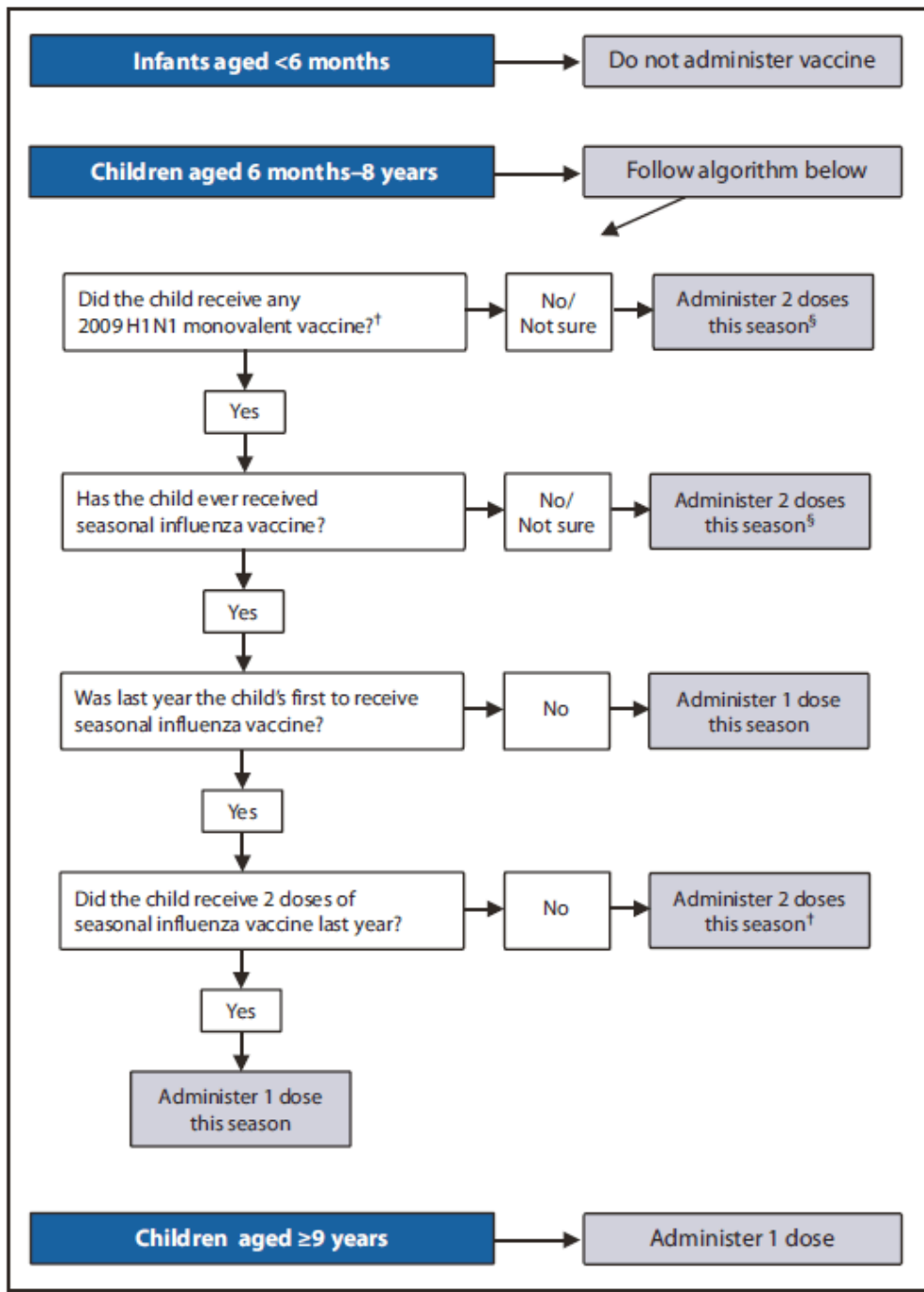
# Overview of 2012-2013 ACIP Influenza Statement

- ❑ Influenza vaccine virus strains selected for 2012-2013.
- ❑ Reiteration of recommendation for annual routine vaccination for all persons age 6 months and older.
- ❑ Dose recommendations for children 6 months through 8 years.
- ❑ Brief summary of last season's investigation of febrile seizures in association with TIV and PCV13.
- ❑ Acknowledgement of recently approved quadrivalent LAIV vaccine (available for 2013-2014).

TIV= trivalent inactivated vaccine; LAIV=live attenuated influenza vaccine

# U.S. Influenza Vaccine Virus Strains, 2012-2013

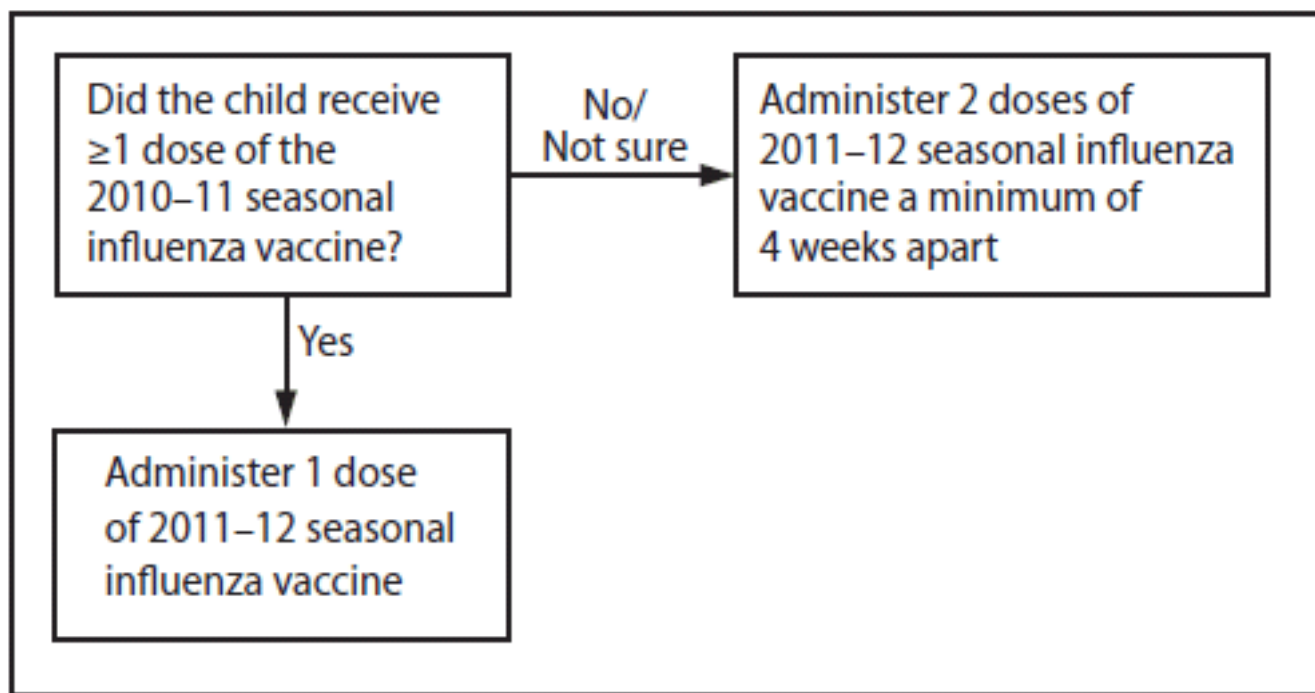
- ❑ WHO--February 20-22, 2012.
- ❑ FDA Vaccine and Related Biologic Products Advisory Committee (VRRBPAC)--February 29, 2012.
- ❑ Changes in the A(H3N2) and B strains as compared with 2011-2012 Northern hemisphere vaccine:
  - A/California/7/2009 (H1N1)pdm09
    - In 2009 monovalent, 2010-2011 and 2011-2012 seasonal vaccines
  - A/Victoria/361/2011 (H3N2) (replaces A/Perth/16/2009)
  - B/Wisconsin/1/2010
    - Yamagata lineage; replaces previous Victoria lineage (B/Brisbane/60/2008)



## Dose algorithm for 6mo through 8yr olds—2010-2011 season

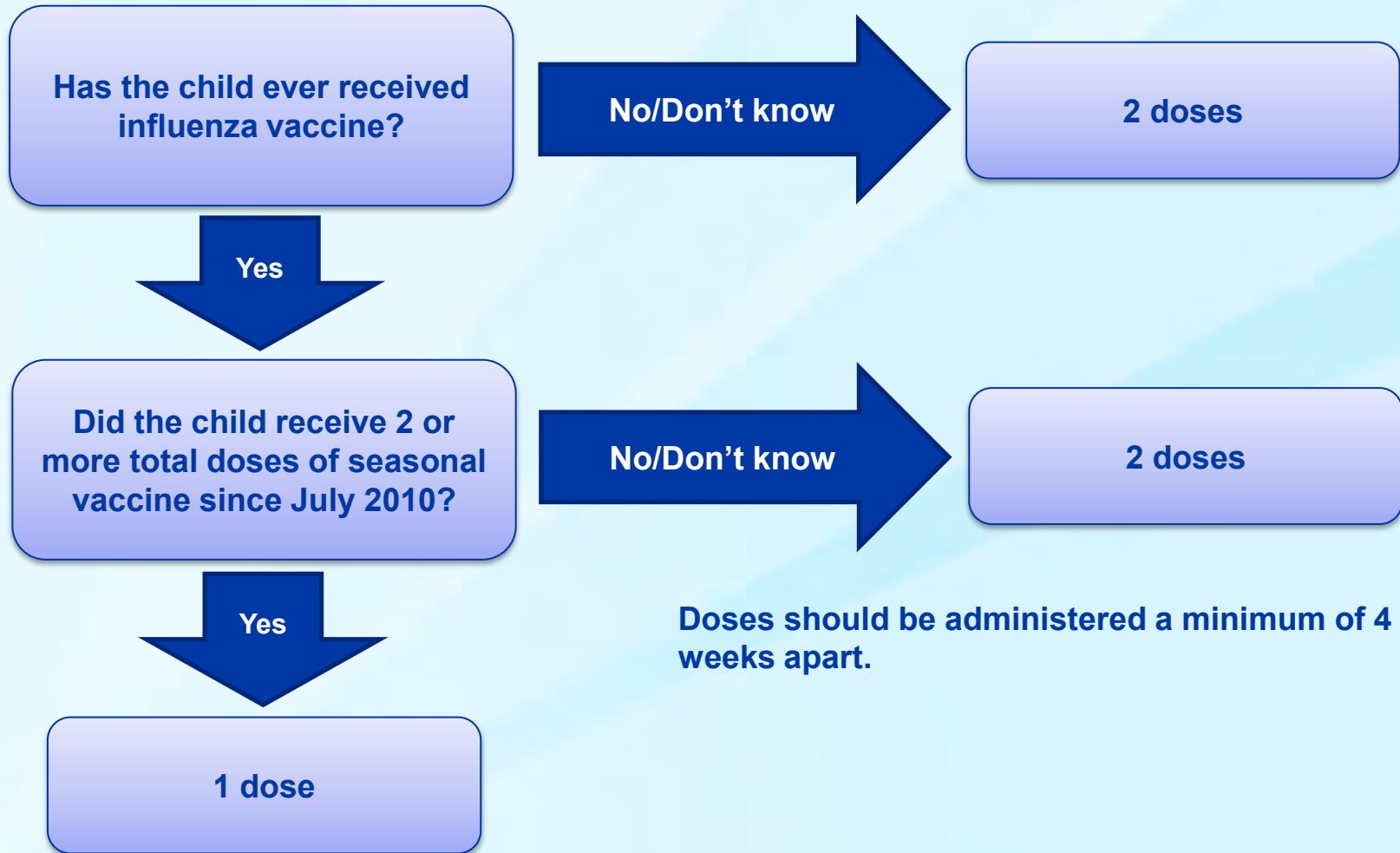
# Influenza Vaccine Dosing for Children 6 Months Through 8 Years

- ❑ Require 2 doses ( $\geq 4$  weeks apart) in first season.
- ❑ Antigenic novelty of pdm09 (2009 H1N1) necessitated consideration of this additional antigen.
- ❑ No change in vaccine strains between 2010-2011 and 2011-2012.
- ❑ Dose algorithm for 2011-2012 season (MMWR 2011;60[33]):



# Proposed 2012-2013 Algorithm for Children 6 Mos. Through 8 yrs.

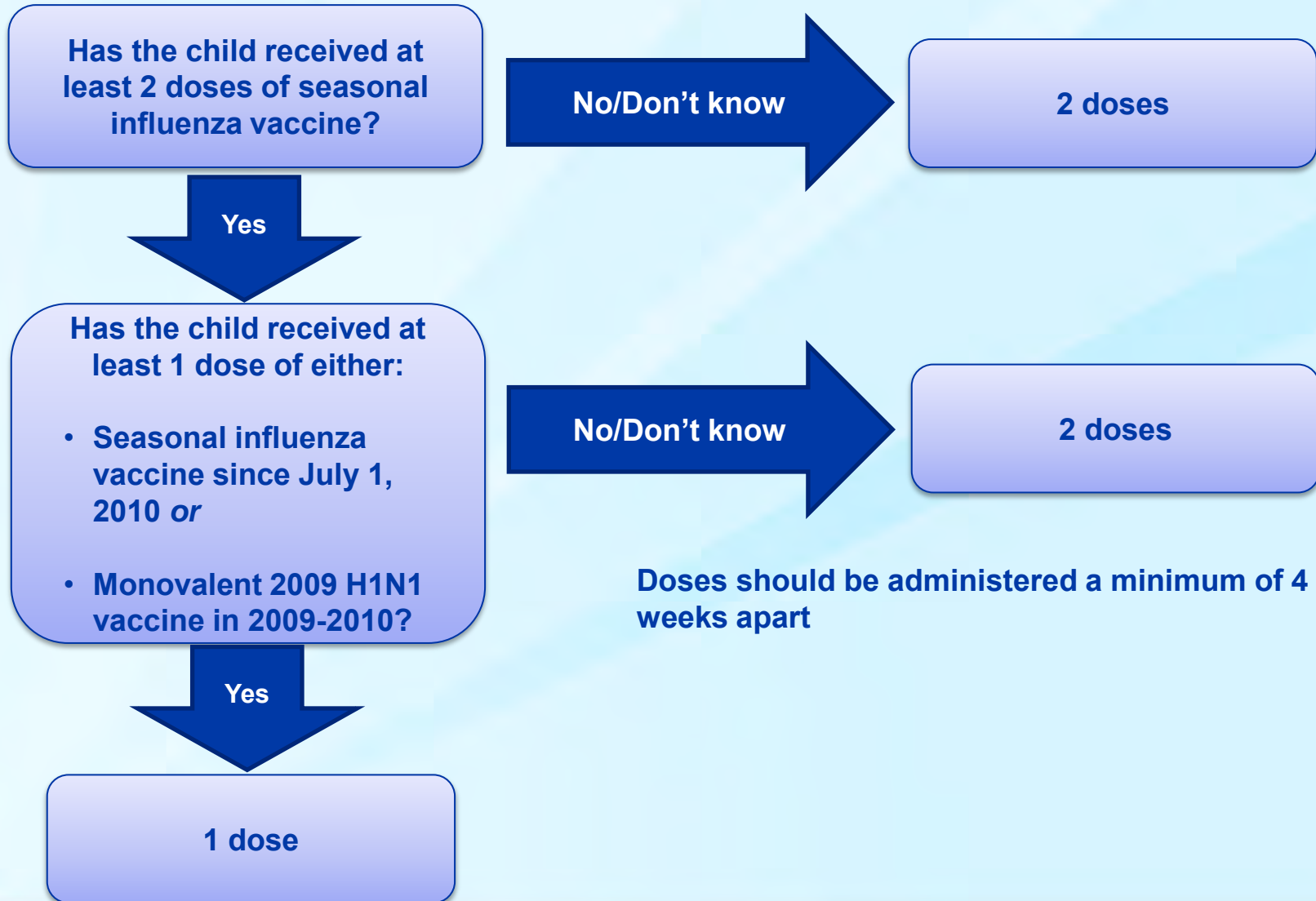
## *Option 1*



Doses should be administered a minimum of 4 weeks apart.

# Proposed 2012-2013 Algorithm for Children 6 Mos. Through 8 yrs.

## Option 2



## Additional Text Note for Option 1

“For simplicity, this algorithm takes into consideration only doses of seasonal influenza vaccine received since July 2010. However, providers may consider on a case-by-case basis administering one dose rather than two to children who are known to have received either

- ❑ 1)  $\geq 2$  doses of seasonal influenza vaccine previously, including at  $\geq 1$  dose of seasonal influenza vaccine since July 1, 2010, or
- ❑ 2)  $\geq 2$  doses of seasonal influenza vaccine previously plus monovalent 2009 H1N1 vaccine in 2009-2010.”