

Additional File 3

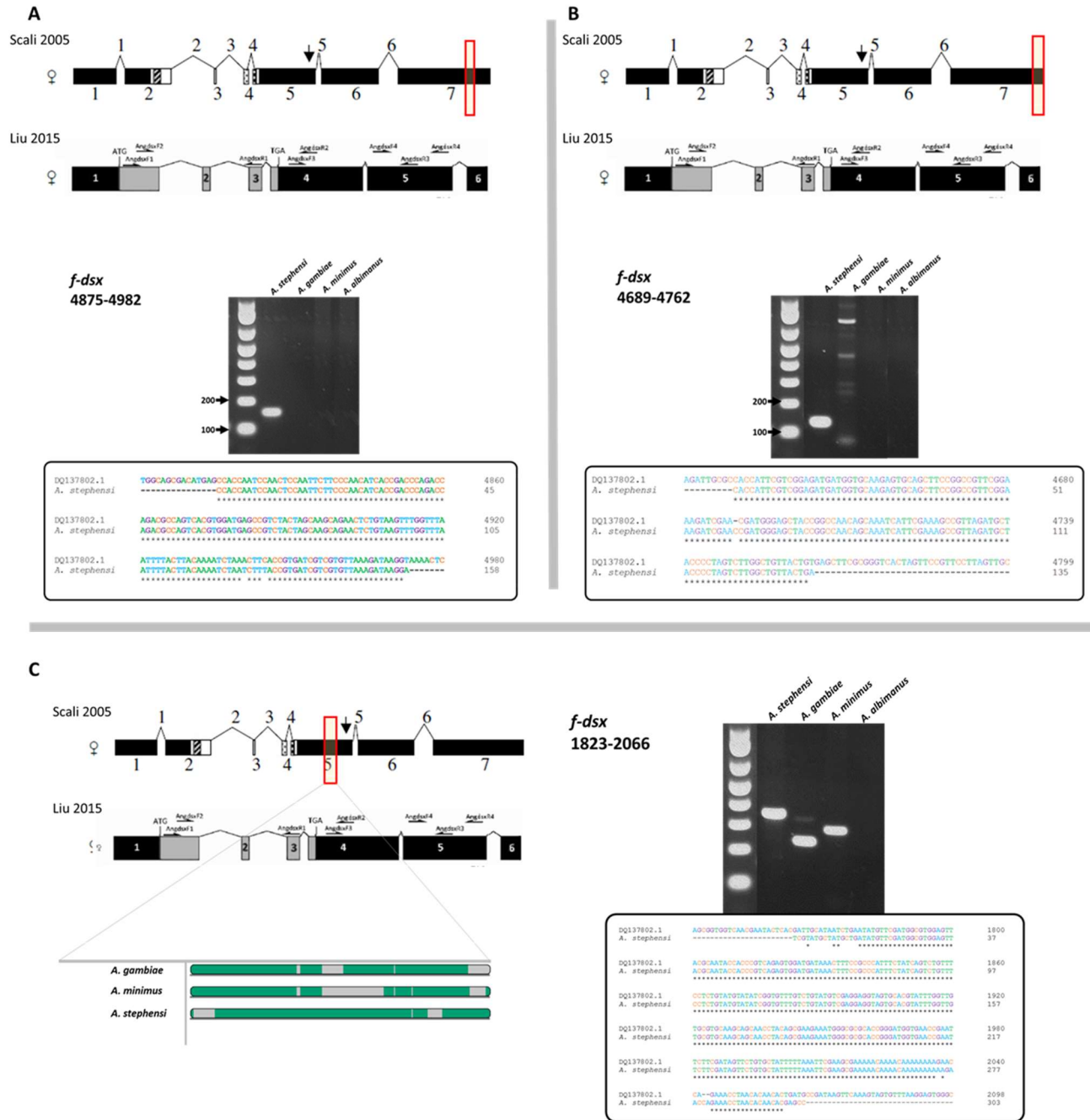


Figure S2. Comparison of Doublesex sequence analysis in four Anopheles species (*A. stephensi* STE2, *A. gambiae* G3, *A. minimus* strain and *A. albimanus* STECLA). Each portion of the figure contains the sequence maps of the gene according to Scali et al. 2005 and to Liu et al. 2015 with a red box indicating the section of the gene target sequence for PCR, the 1.5% agarose gel of the amplified products and the sequence alignment of the that amplified region in *A. stephensi* STE2 and DQ137802 (a) Amplification and comparison of the 4689-4762bp region of the *dsx* gene. (b) Amplification of the 4875-4982 bp region (c) Amplification of the 1823-2066 bp region and the AMAFFT alignment of the whole gene from *A. gambiae*, *A. minimus* and *A. stephensi* with green regions highlighting areas significant similarity