

Influenza Activity Update

Lynnette Brammer, MPH

Influenza Surveillance and Outbreak Response Team

Epidemiology and Prevention Branch

Influenza Division

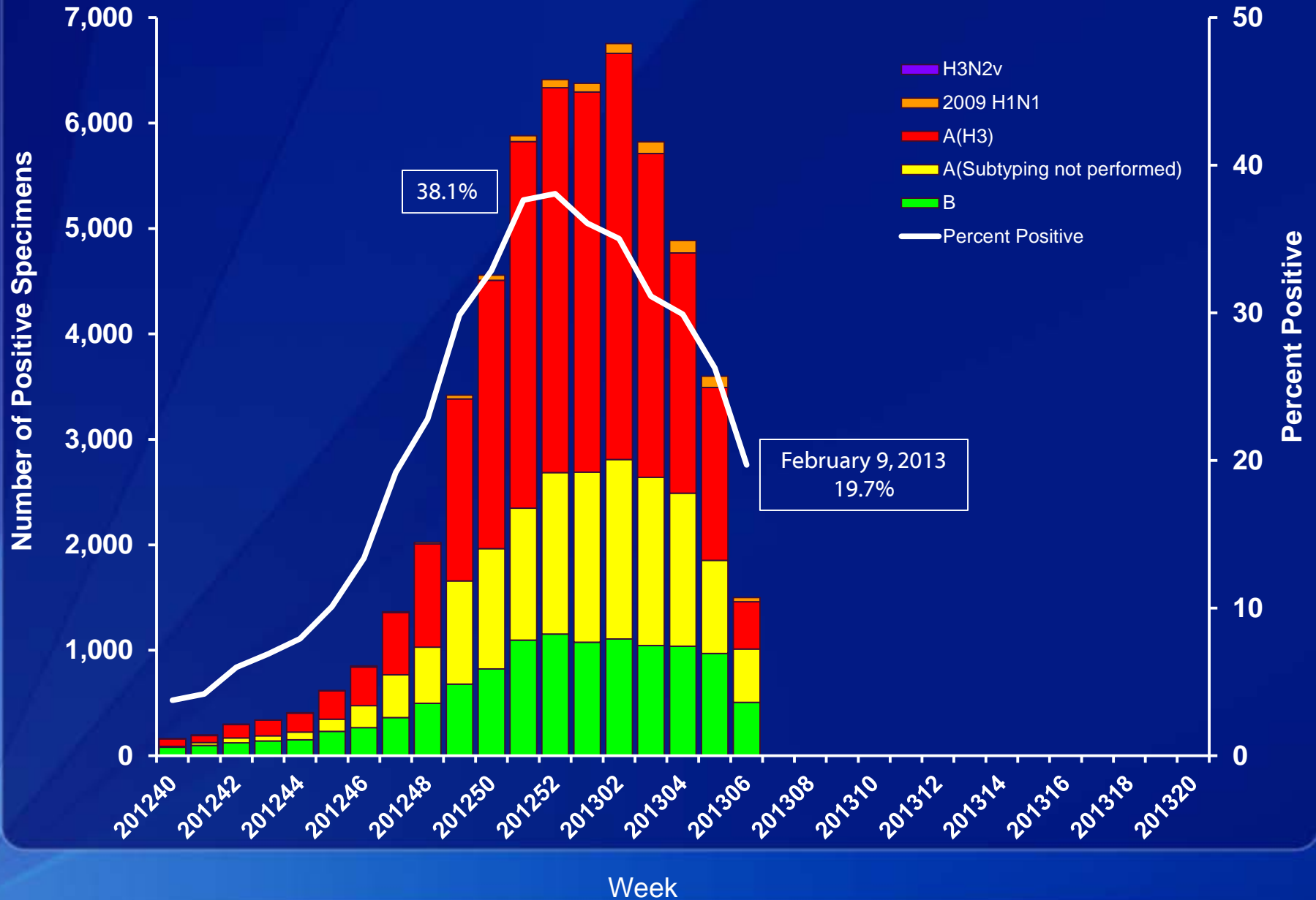
ACIP

February 21, 2013



VIROLOGIC SURVEILLANCE

Influenza Positive Tests Reported to CDC by U.S. WHO/NREVSS Collaborating Laboratories, National Summary



Antigenic Characterization

September 30, 2012 – February 9, 2013

□ Influenza A

■ 2009 H1N1

- 86/86 (100%) characterized A/California/7/2009-like, the H1N1 component of the 2012-13 N. Hemisphere vaccine

■ H3N2

- 673/677 (99.4%) characterized as A/Victoria/361/2011-like the H3N2 component of the 2012-13 N. Hemisphere vaccine

□ Influenza B

■ Yamagata lineage

- 230/325 (71%) are from the Yamagata lineage and characterized as B/Wisconsin/1/2010-like the influenza B component of the 2012-13 N. Hemisphere vaccine

■ Victoria lineage

- 95/325 (29%) tested have been from the Victoria lineage of viruses

Antiviral Resistance

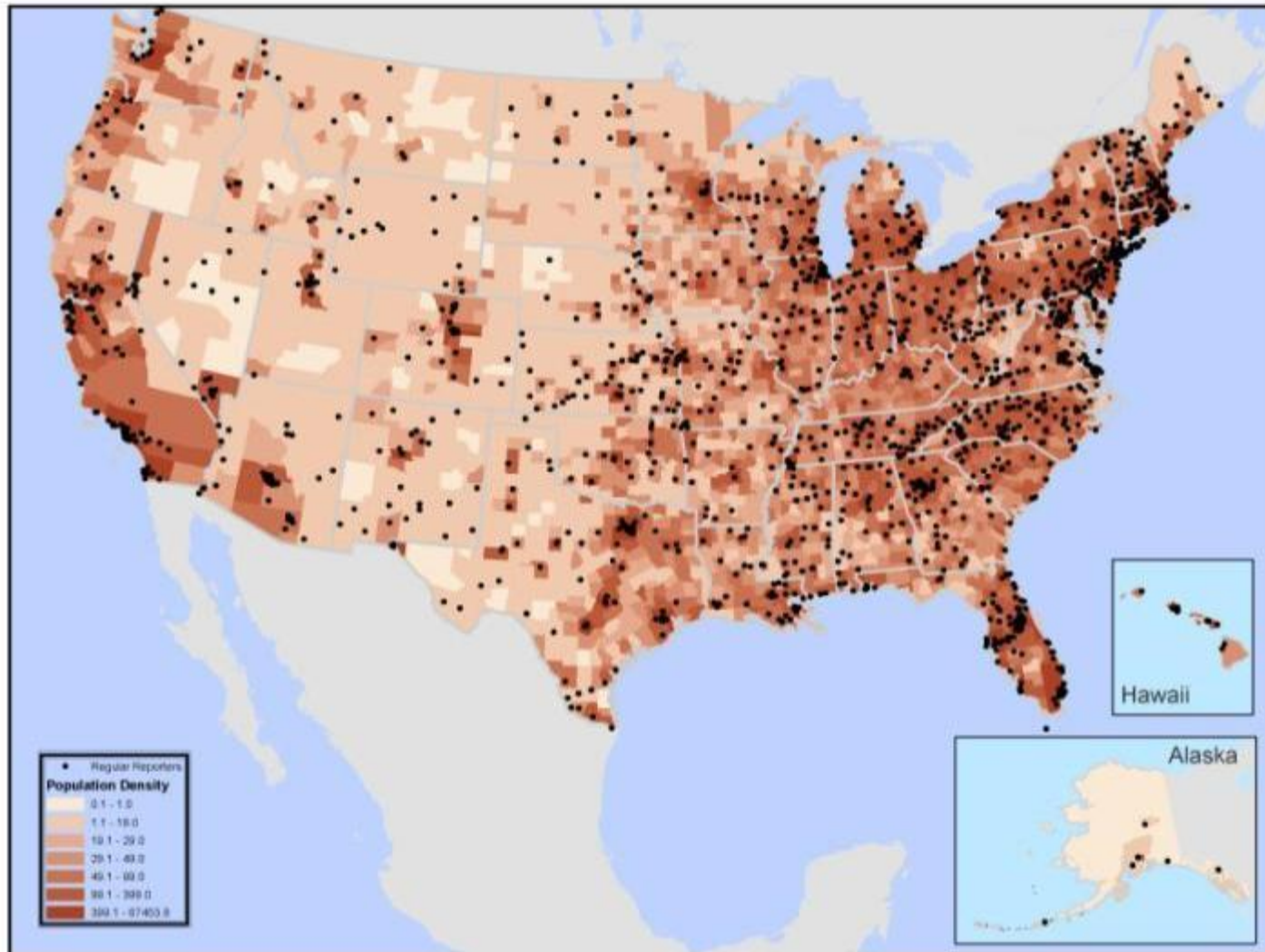
September 30, 2012 – February 9, 2013

Neuraminidase Inhibitor Resistance Testing Results Samples Collected Since September 30, 2012				
	Oseltamivir		Zanamivir	
	Virus Samples tested (n)	Resistant Viruses, Number (%)	Virus Samples tested (n)	Resistant Viruses, Number (%)
Influenza A (H3N2)	1,072	0 (0.0)	1,072	0 (0.0)
Influenza B	396	0 (0.0)	396	0 (0.0)
2009 H1N1	234	2 (0.9)	97	0 (0.0)

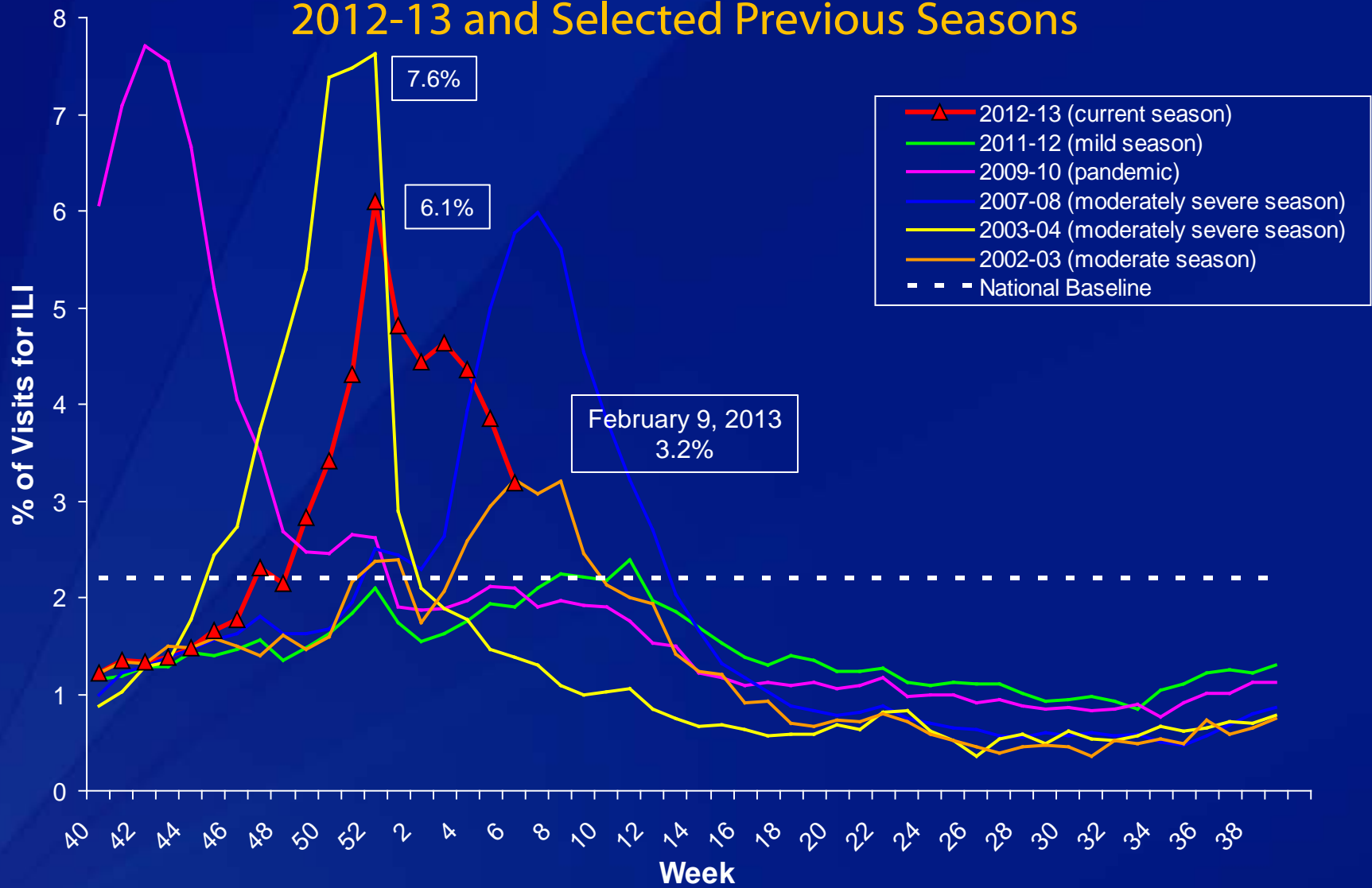
- High levels of resistance to the adamantanes (amantadine and rimantadine) persist among pH1N1 and influenza A (H3N2) viruses currently circulating globally.

ILI SYNDROMIC SURVEILLANCE

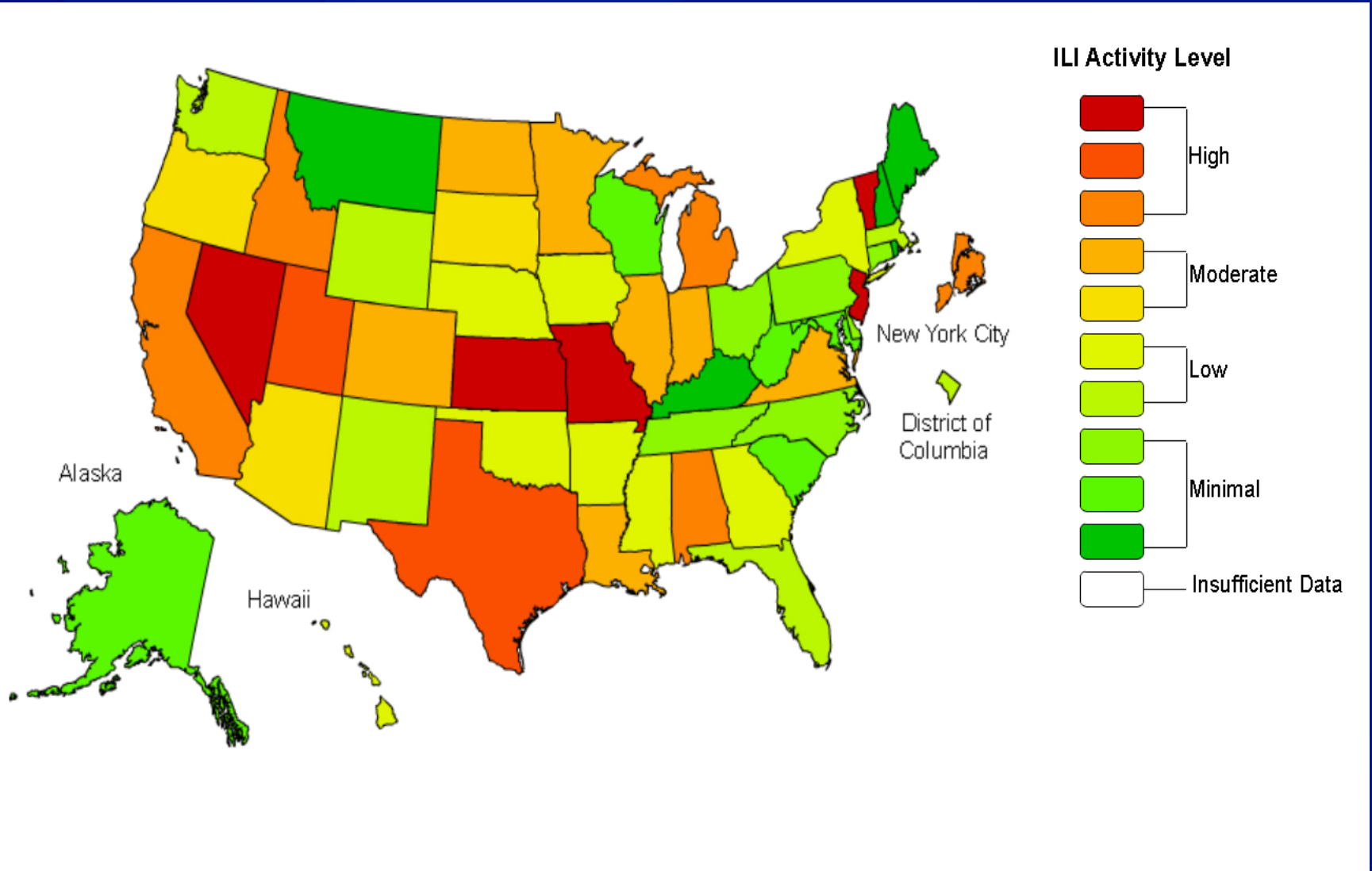
ILI NET COVERAGE



Percentage of Visits for Influenza-like Illness Influenza-like Illness Surveillance Network (ILINet), 2012-13 and Selected Previous Seasons



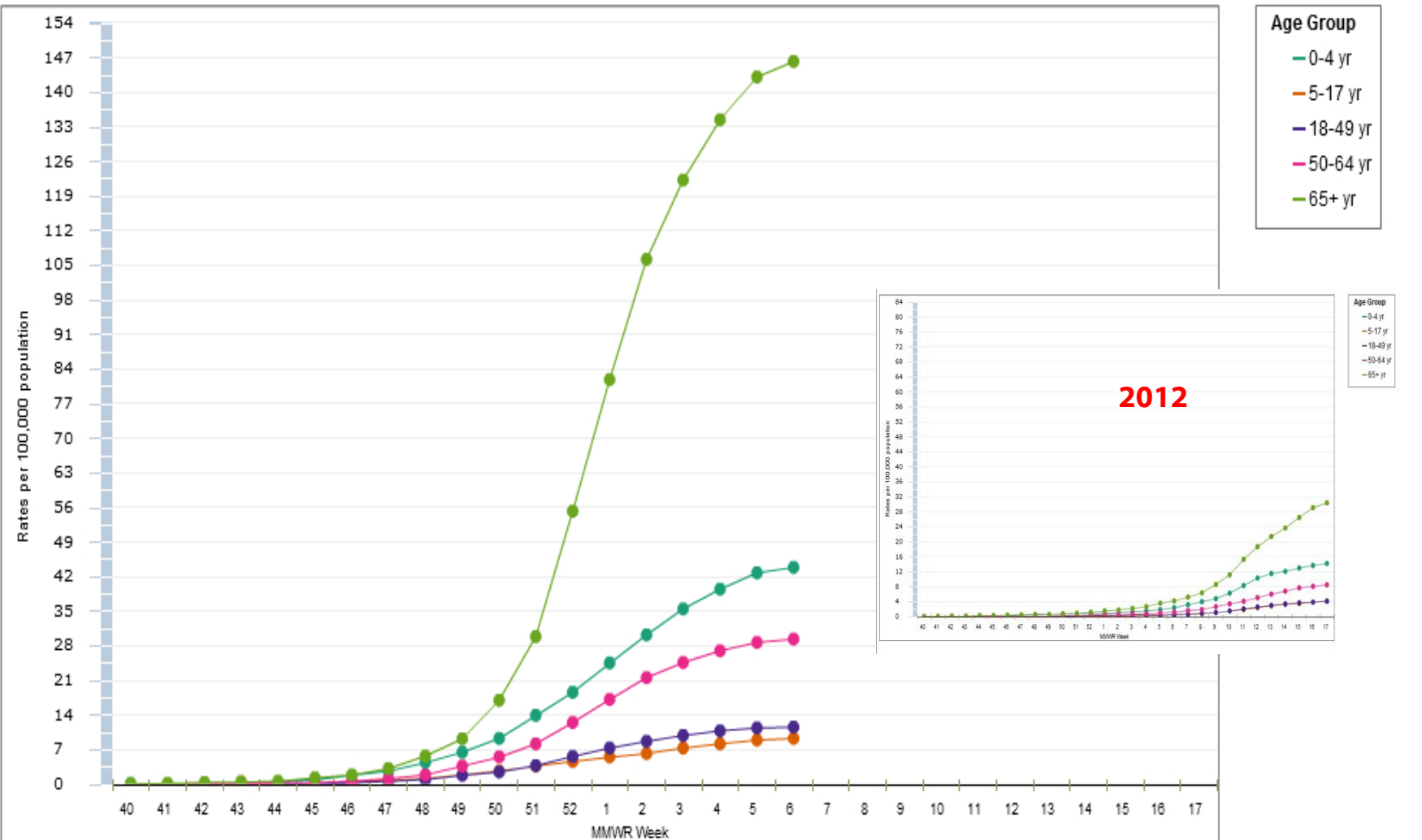
Relative Influenza-like Illness Activity Indicator as Determined by ILINet Provider Reports, February 9, 2013



HOSPITALIZATION SURVEILLANCE

Rates of Laboratory-Confirmed Influenza Hospitalization by Age Group

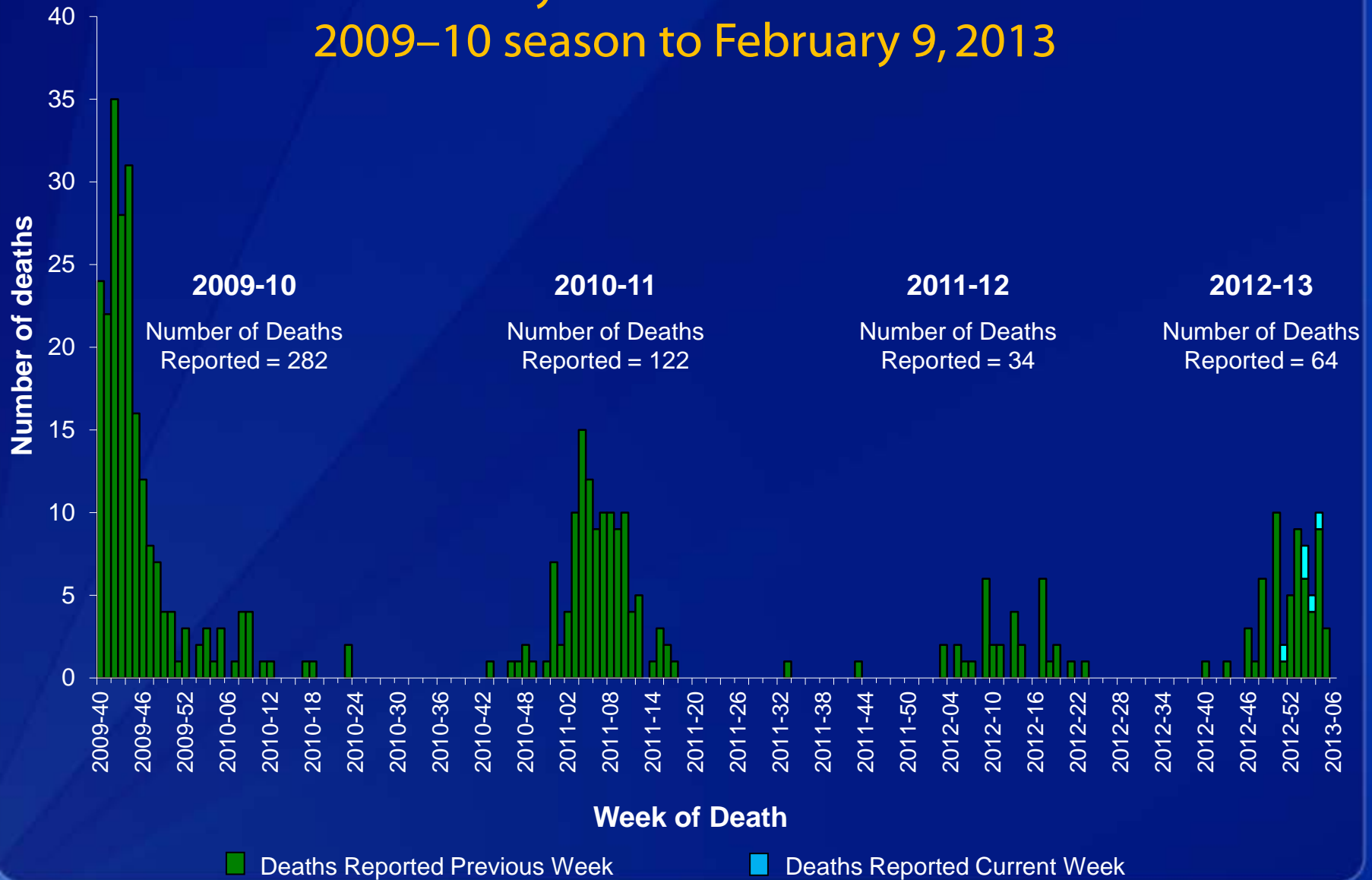
FluSurvNet, September 30 2012 – February 9, 2013



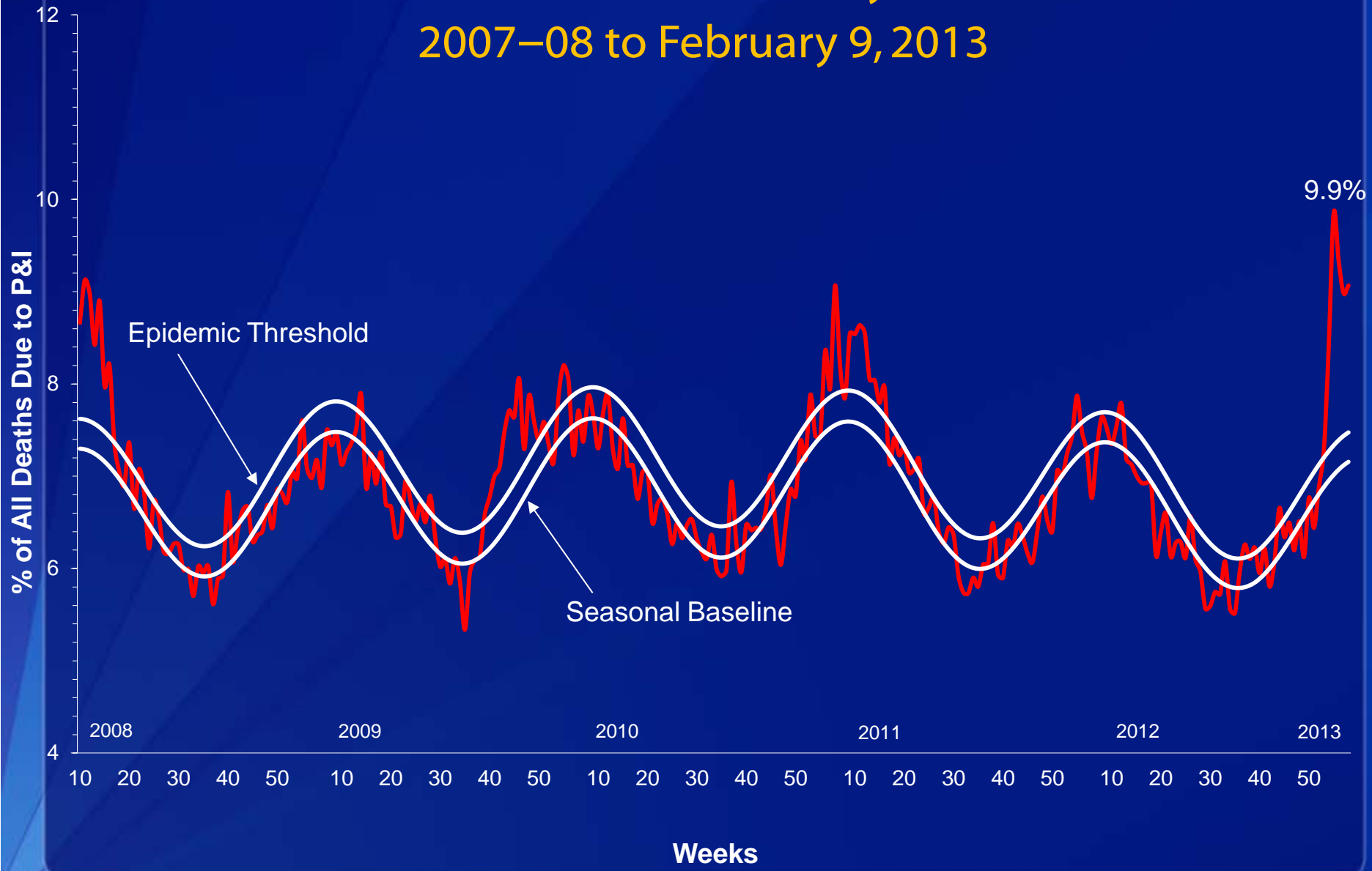
MORTALITY SURVEILLANCE

Number of Influenza-Associated Pediatric Deaths by Week of Death

2009–10 season to February 9, 2013

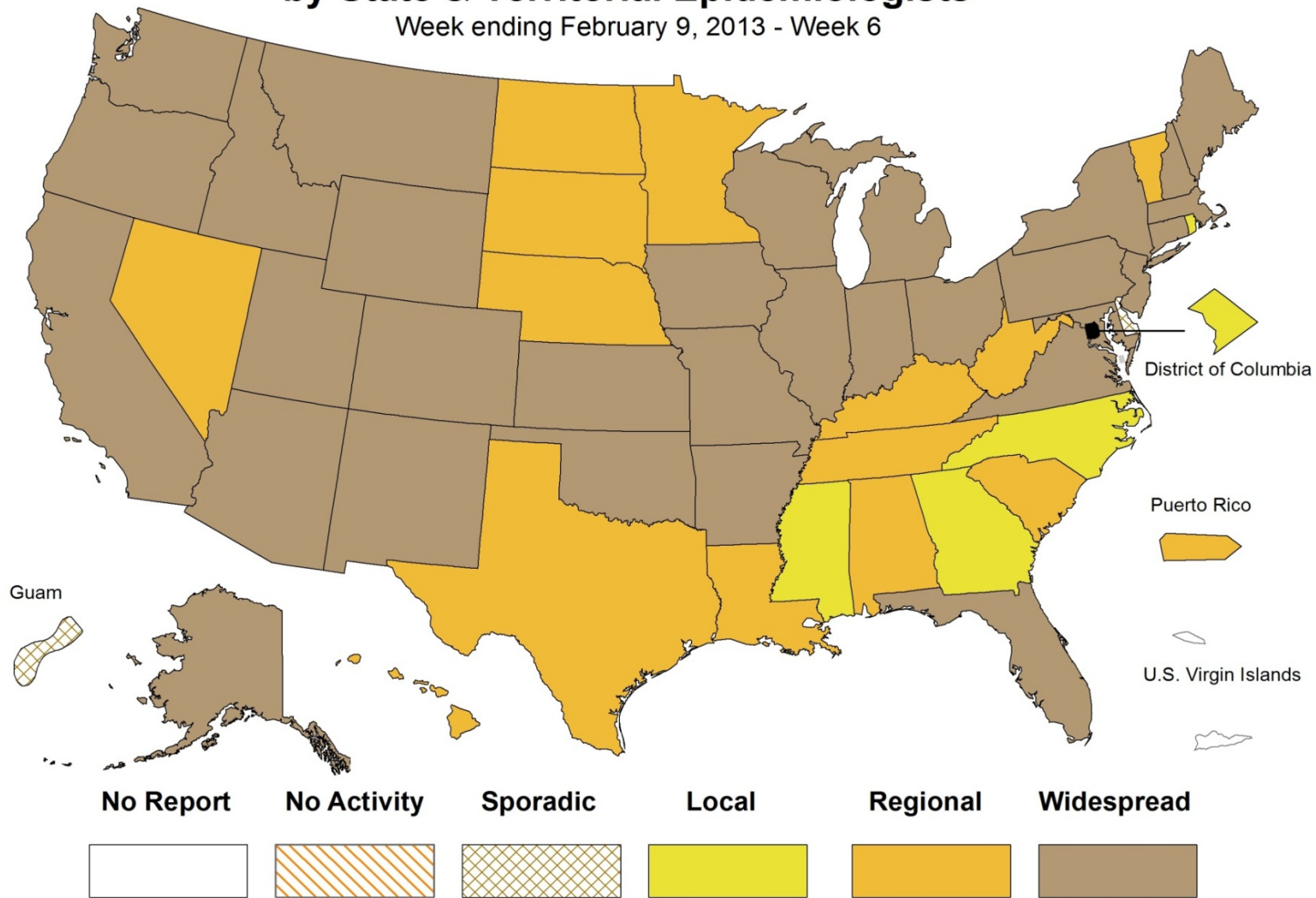


Pneumonia and Influenza Mortality in 122 U.S. Cities 2007–08 to February 9, 2013



Weekly Influenza Activity Estimates Reported by State & Territorial Epidemiologists*

Week ending February 9, 2013 - Week 6



* This map indicates geographic spread & does not measure the severity of influenza activity

Influenza Activity Summary

- ❑ Influenza activity in the US during the 2012–13 season began approximately 4 weeks earlier than usual, and occurred at moderately high levels
 - Activity increased in late November and peaked in late December
 - Activity continues in much of the country especially the west
- ❑ Influenza A (H3N2) viruses have predominated overall, but influenza B viruses have also circulated
- ❑ This influenza season has been moderately severe with high rates of influenza hospitalization in the elderly and a large proportion of deaths attributed to pneumonia and influenza

Acknowledgements

Lyn Finelli
Joseph Bresee
Scott Epperson
Lenee Blanton
Krista Kniss
Rosaline Dhara
Desiree Mustaquim
Tiffany D'Mello
Alejandro Perez
Andrea Giorgi
Craig Steffans
Ashley Fowlkes
Julie Villanueva

Michael Jhung
Carrie Reed
Alicia Fry
Seema Jain
Anna Bramley
Victoria Jiang
Sandra Dos Santos Chaves
Daniel Jernigan
Joe Gregg
Larissa Gubareva
Terri Wallace
Xiyang Xu
Nancy Cox

Thank you

LBrammer@cdc.gov

www.cdc.gov/flu

[http://www.cdc.gov/flu/weekly/fluview
winteractive.htm](http://www.cdc.gov/flu/weekly/fluviewinteractive.htm)

