



Strategic National Stockpile 12-hour Push Package Product Catalog

Division of Strategic National Stockpile



Office of Public Health Preparedness and Response
Division of Strategic National Stockpile

Table of Contents

Introduction	3
Oral Antibiotics	4
Intravenous	5-9
Respiratory	10-13
Pediatric	14-15
Medical/Surgical	16
Appendix A- Items used together	17
Appendix B- Items sent simultaneously with 12-hour Push Package	18
Index	19-20

The Strategic National Stockpile 12-hour Push Package Product Catalog



The Strategic National Stockpile (SNS) 12-hour Push Package Product Catalog contains images and descriptions of the products in a 12-hour Push Package as of October 2011. A 12-hour Push Package is a 50-ton cache of pharmaceuticals and medical supplies designed to provide rapid delivery of a broad spectrum of assets for an ill-defined threat. The 12-hour Push Package can be delivered to a receipt, stage, and store (RSS) warehouse within 12 hours of the federal decision to do so. This formulary, combined with technical assistance from the project area's program services consultant, can assist state and local SNS planners in streamlining the staging and reordering process.

The SNS 12-hour Push Package Product Catalog is updated as products are added or removed. Depending on reordering availability, the products pictured in this catalog may vary based on brand and packaging. The product description also may indicate additional sizes not pictured in the catalog but are included in the 12-hour Push Package.

The catalog is organized by color codes, that correspond with the colors of the product list on each cargo container in the 12-hour Push Package. The appendices include 12-hour Push Package items that are used together and items not included in the 12-hour Push Package but are sent at the same time.

Red- Oral antibiotics
Yellow- Intravenous
Blue- Respiratory
Pink- Pediatric
White/Clear- Medical/Surgical

Note: This content is sensitive but unclassified information. For more information, please contact your DSNS program services consultant or submit questions to sns_ppb@cdc.gov. The use of trade names or commercial sources is for informational purposes only and does not constitute an endorsement by the United States Department of Health and Human Services or the Public Health Service.

Oral Antibiotics



Amoxicillin, 500mg capsules,
30 capsules per unit-of-use-bottle



Ciprofloxacin, 500mg tablets,
20 tablets per unit-of-use bottle

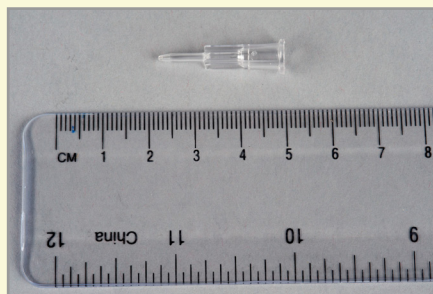


Doxycycline, 100mg tablets,
20 tablets per unit-of-use bottle

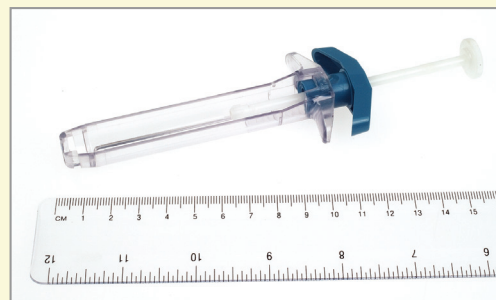
Intravenous



Alcohol pads



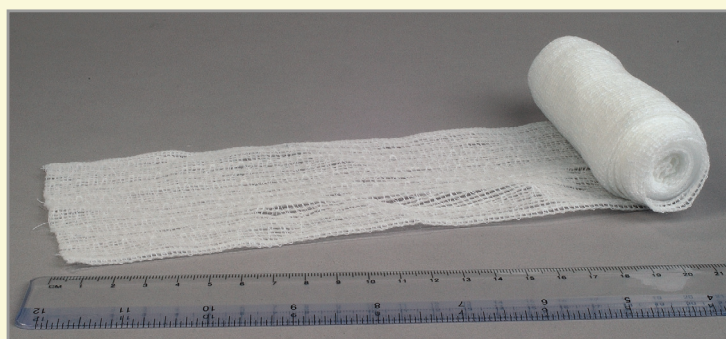
Blunt plastic cannula



Carpuject holder device



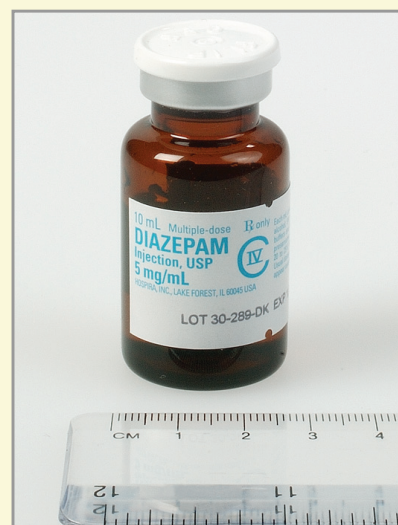
Ciprofloxacin IV, 400mg
(2mg/mL), 200mL D5W bag



Conforming gauze, 4" x 75"

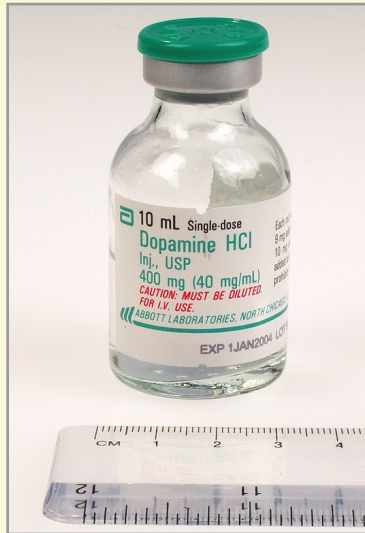


Decappers (safety cap removal device)



Diazepam injection, 5mg/mL,
10mL multidose vial*
*This item is in a locked
DEA container.

Intravenous



Dopamine HCL injection
400mg (40mg/mL), 10mL vial



Doxycycline injection, 100mg,
powder vial



Gauze, 4" x 4", sterile sponge



Gentamicin injection, 40mg/mL,
20mL multidose vial

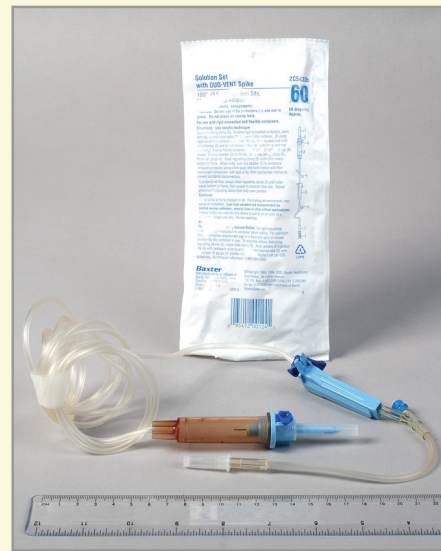


Gloves, medium and large, vinyl, nonsterile,
nonlatex, powder-free

Intravenous



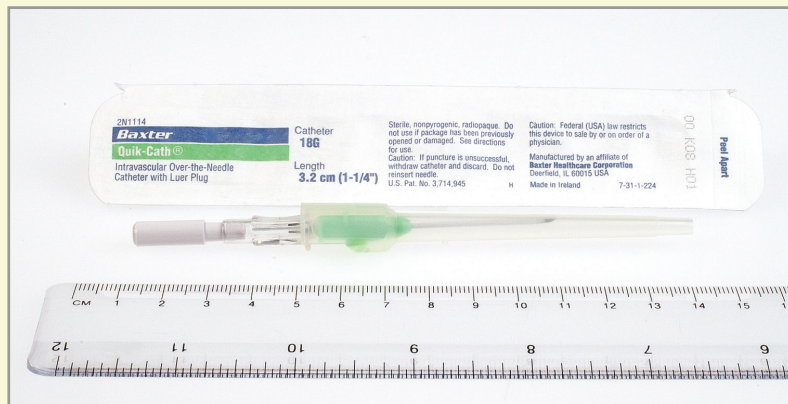
IV administration set, 15 drop/mL, unvented/vented, adult



IV administration set, 60 drop/mL, vented, pediatric

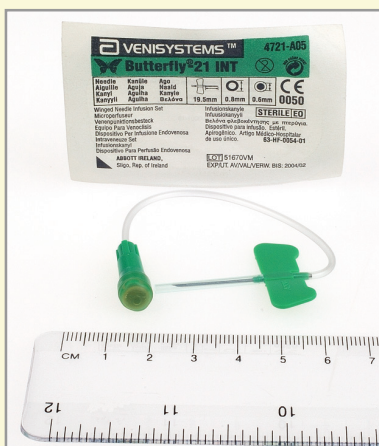


IV administration set, 60 drop/mL, unvented, pediatric

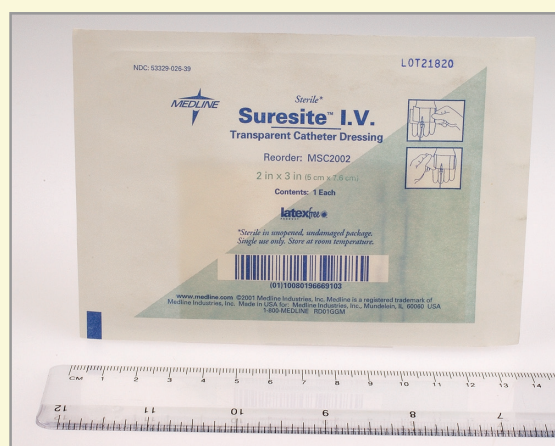


IV catheter/needle, 18ga x 2"

*Not pictured, IV catheter/needle 18ga x 1 1/4" and IV catheter/needle 20ga x 1 1/4"



IV catheter/needle, butterfly, 21ga x 3/4"

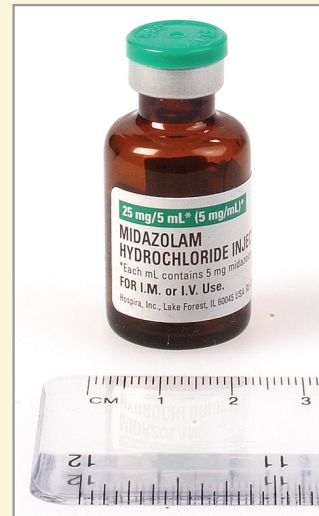


IV site transparent dressing, 2" x 3"

Intravenous



Levophed injection, 1mg/mL, 4mL ampule



Midazolam injection, 5mg/mL, 5mL vial
**This item is in a locked DEA container.*



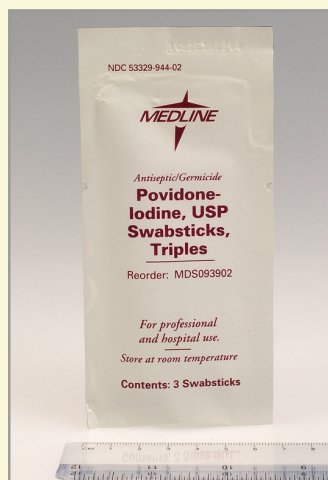
Morphine sulfate injection, 10mg/mL, 1mL prefilled carpuject syringe with luer lock
**This item is in a locked DEA container.*



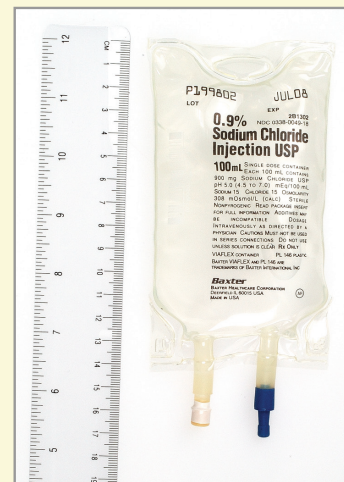
Nasal cannula, adult



Non-rebreather oxygen mask, adult

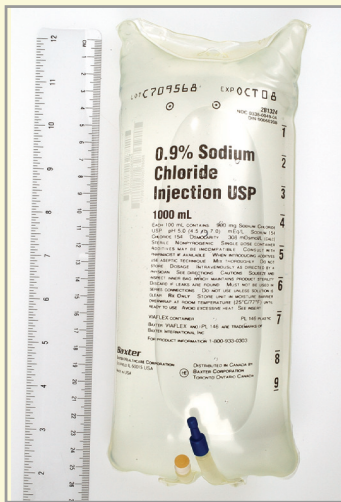


Povidone iodine swabsticks, triples

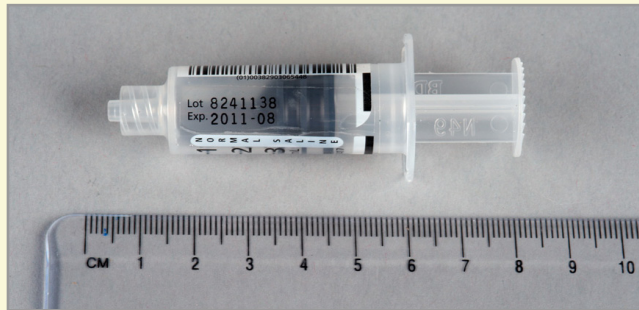


Sodium chloride 0.9%, 100mL bag

Intravenous



Sodium chloride 0.9%, 1000mL bag



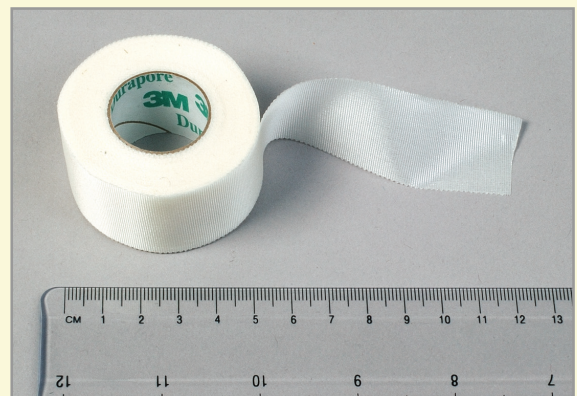
Sodium chloride 0.9% injection, 3mL prefilled syringe with luer lock, preservative-free, latex-free



Sterile water for injection, 10mL vial



Syringe, 10mL with 20ga 1 1/2" needle



Tape, silk, 1" x 10 yd, roll



Tourniquet, latex-free



Tweezers

Respiratory



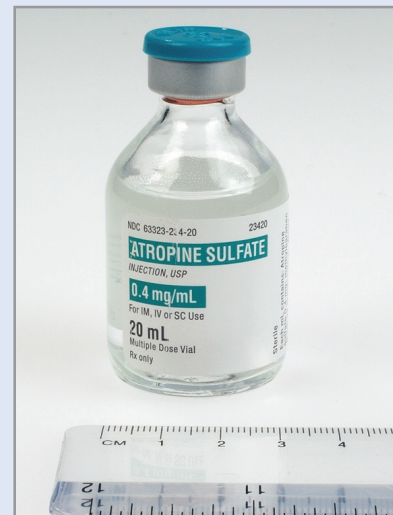
Aerosol mask, adult



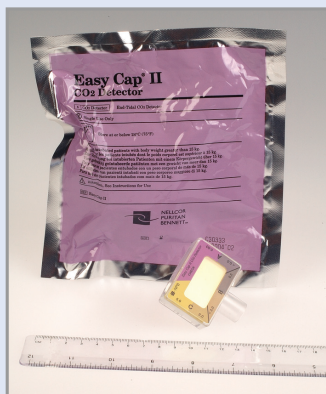
Aerosol mask, pediatric



Albuterol sulfate inhalation (nebulizer) solution, 0.083%, 3mL ampule



Atropine sulfate injection, 0.4mg/mL, 20 mL multidose vial



CO₂ detector (Easy Cap II)

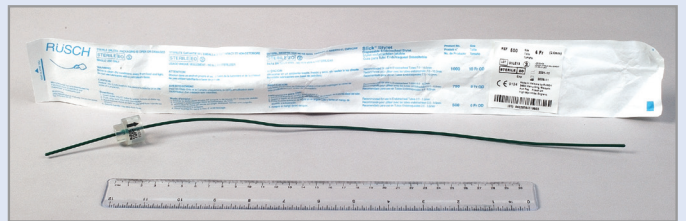


Endotracheal tube, 6mm ID, cuffed, pediatric/small adult

Respiratory



Endotracheal tube, 8mm ID, cuffed, adult
**Not pictured, endotracheal tube, 7mm ID, cuffed, adult*



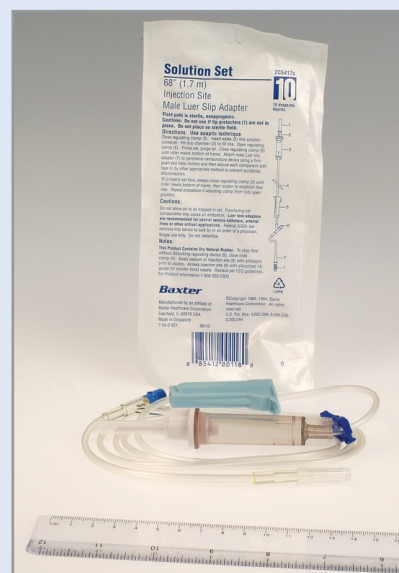
Endotracheal tube stylet/guide, 10Fr, adult
**Not pictured endotracheal tube stylet/guide, 14Fr, adult*



Gloves, medium and large, vinyl, nonsterile, nonlatex, powder-free

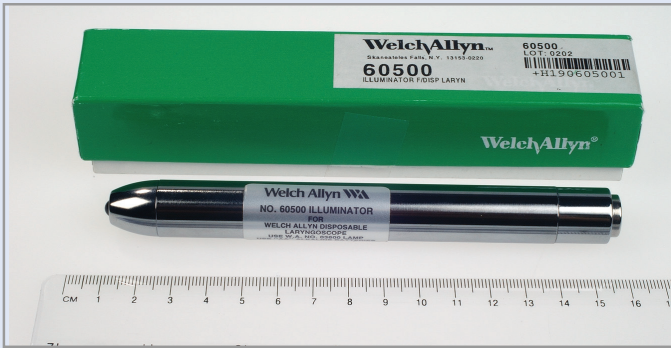


Heparin lock/IV intermittent injection site, long, with luer lock



IV administration set, 15 drop/mL, vented/unvented, adult

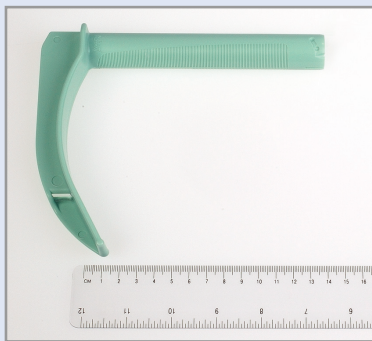
Respiratory



Laryngoscope illuminator, nondisposable/reusable



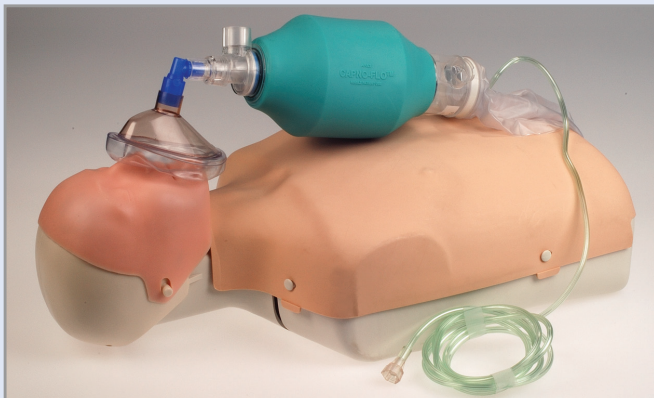
Laryngoscope handle med/standard, nondisposable



Laryngoscope, large (Mac 3.5), disposable



Laryngoscope Miller 1, Miller 2, and Mac 4 blades, disposable

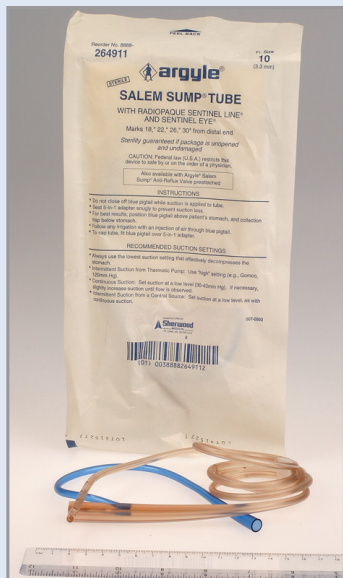


Manual pulmonary resuscitator (MPR) bag/mask, adult

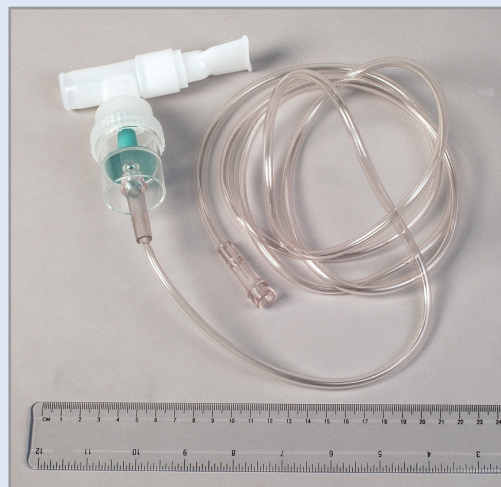


Methylprednisolone injection, 125mg, 2mL Act-O-Vial

Respiratory



Nasogastric tube 16Fr, adult
* Not pictured, nasogastric tube 14Fr, adult



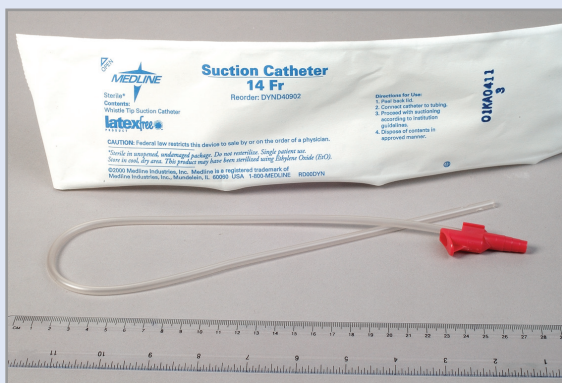
Nebulizer, t-mouthpiece, 7ft. tube



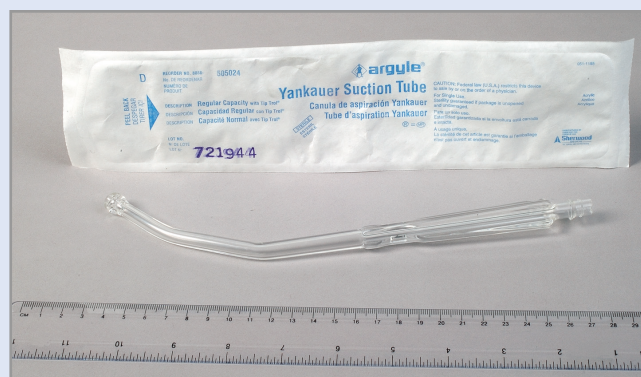
Nonrebreather oxygen mask, adult



Oropharyngeal airway, 80mm, 90mm, 100mm and 110mm, adult



Suction catheter, 14Fr, sterile, adult
* Not pictured, Suction catheter, 12Fr, adult



Yankauer suction, sterile

Pediatric



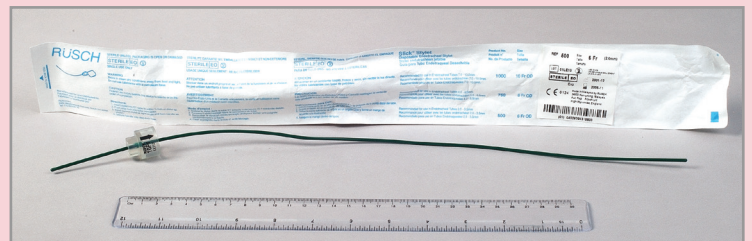
Broselow tape



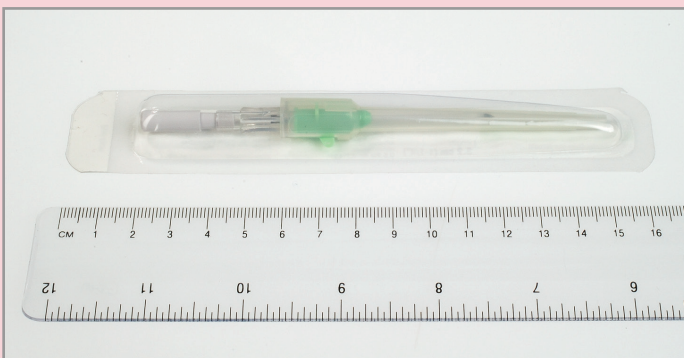
CO₂ detector (Pedi-Cap)



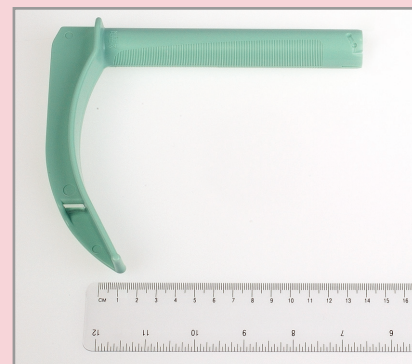
Endotracheal tube, 3mm ID, unuffed, infant
**Not pictured, Endotracheal tube, 4mm ID, unuffed, infant; Endotracheal tube, 5 mm ID, unuffed, pediatric*



Endotracheal tube stylet/guide, 8Fr, pediatric
**Not pictured, endotracheal tube stylet/guide 6Fr, infant*



IV catheter/needle, 24ga x 5/8"



Laryngoscope, small (Mac 1.5), disposable

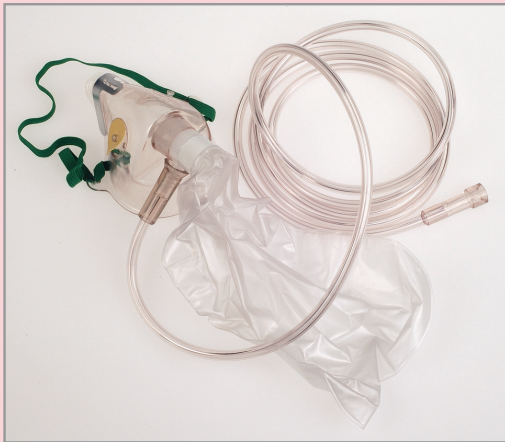
Pediatric



Manual pulmonary resuscitator (MPR) bag/mask, pediatric and infant



Nasogastric tube, 10Fr, pediatric
*Not pictured, Nasogastric tube, 6Fr, 8Fr



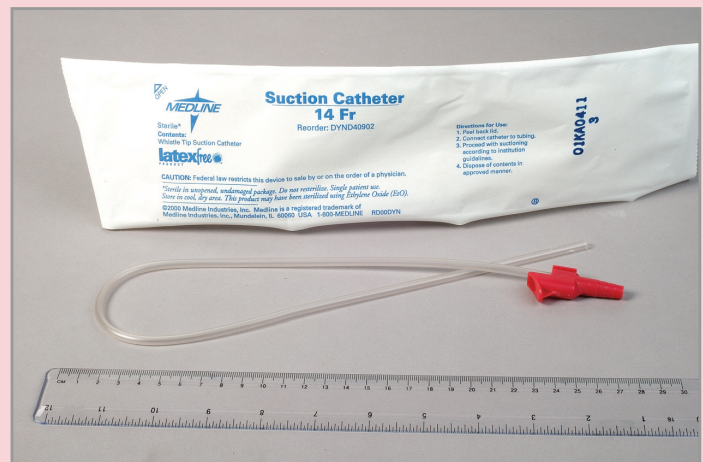
Non-rebreather oxygen mask, pediatric and infant



Nasal cannula, pediatric and infant



Oropharyngeal airway, 60mm, pediatric
*Not pictured,
Oropharyngeal airway, 40mm

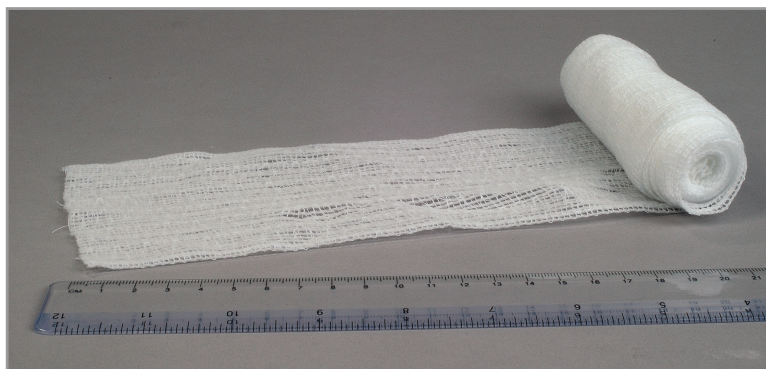


Suction catheter, 8Fr, and 10Fr, sterile, pediatric

Medical/Surgical



Abdominal pad, 8" x 10"



Conforming gauze, 4" x 75"



Gauze 4" x 4", sterile sponge

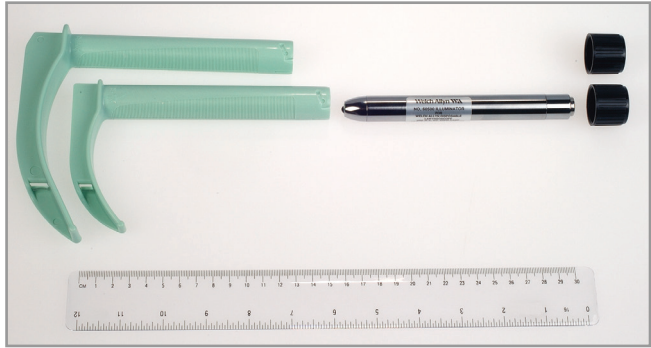


Oxygen tubing, 7ft. (5-7mm)

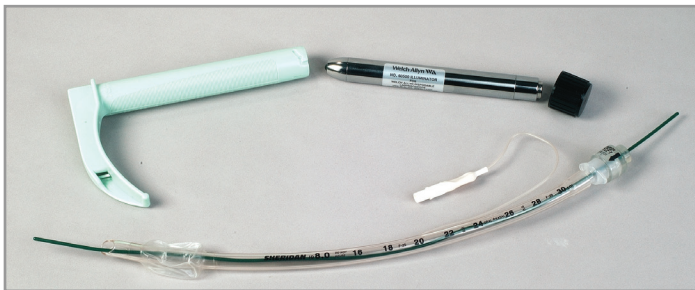
Appendix A- Items used together



Carpuject holder and morphine prefilled syringe



Disposable laryngoscope (small and large) with non-disposable illuminator



Endotracheal items

- Disposable laryngoscope with nondisposable illuminator
- Endotracheal tube and endotracheal tube stylet



Laryngoscope Miller 1, Miller 2, and Mac 4 blades (disposable) and laryngoscope handle (nondisposable)



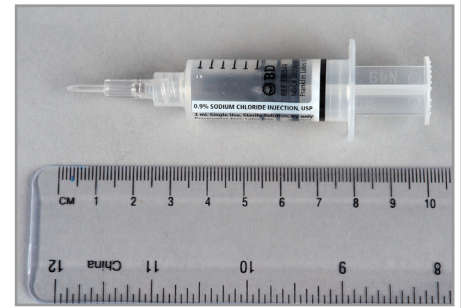
IV items

- Providone iodine swabsticks, triples
- IV catheter and needle
- Heparin lock/IV intermittent injection site, long with luer lock
- IV administration set
- Silk tape
- Transparent catheter dressing
- Tourniquet, latex-free



Nebulizer mask items

- Aerosol mask, pediatric
- Aerosol mask, adult
- Nebulizer, t-mouthpiece, 7ft. tube



Pre-filled 3mL normal saline flush and blunt plastic needle

Appendix B- Items sent separately but simultaneously with 12-hour Push Package



Amoxicillin oral suspension,
400mg/5mL, 100mL
bottle, powder



Ciprofloxacin oral suspension, 250mg/mL, 100mL bottle, powder,
comes with own diluent



Doxycycline oral suspension,
25mg/5mL, 60mL bottle, powder



Oral dosing syringe, 10mL

Index

A

Abdominal pad, 8" x 10"	16
Aerosol mask, adult	10, 17
Aerosol mask, pediatric	10, 17
Albuterol sulfate inhalation (nebulizer) solution, 0.083%, 3mL ampule	10
Alcohol pads	5
Amoxicillin, 500mg capsules, 30's, unit-of-use bottle	4
Amoxicillin oral suspension, 400mg/5mL, 100mL bottle, powder	18
Atropine sulfate injection, 0.4mg/mL, 20 mL multi-dose vial	10

B

Broselow tape	14
---------------------	----

C

Carpujet holder device	5
Carpujet holder with Sodium Chloride inside	17
Carpujet holder with Sodium Chloride side by side	17
Ciprofloxacin, 500mg tablets, 20's, unit-of-use bottle	4
Ciprofloxacin IV, 400mg (2mg/mL), 200mL D5W bag	5
Ciprofloxacin oral suspension, 250mg/mL, 100mL bottle, powder, comes with own diluent	18
Cloth tape	17
CO2 detector (Easy Cap II)	10, 14
Conforming gauze, 4" x 180"	5, 16

D

Decappers (safety cap removal device)	5
Diazepam injection, 5mg/mL, 10mL multi-dose vial	5
Disposable laryngoscope (small and large) with illuminator	17
Disposable laryngoscope with illuminator	17
Dopamine HCL injection 400mg (40mg/mL), 10mL vial	6
Doxycycline, 100mg tablets, 20's, unit-of-use bottle	4
Doxycycline injection, 100mg, powder vial	6
Doxycycline oral suspension, 25mg/5mL, 60mL bottle, powder	18

E

Endotracheal tube stylette	17
Endotracheal tube, 3mm ID, uncuffed, infant	14
Endotracheal tube, 4mm ID, uncuffed, infant *Not pictured	14
Endotracheal tube, 5mm ID, uncuffed, pediatric *Not pictured	14
Endotracheal tube, 7mm ID, cuffed, adult *Not pictured	11
Endotracheal tube, 8mm ID, cuffed, adult	11
Endotracheal tube stylette/guide, 6Fr, infant *Not pictured	14
Endotracheal tube stylette/guide, 8Fr, pediatric	14
Endotracheal tube stylette/guide, 10Fr, adult	11

G

Gauze 4" x 4", sterile sponge	6, 16
Gentamicin injection, 40mg/mL, 20mL multi-dose vial	6
Gloves, large, vinyl, non-sterile, non-latex, powder-free	6, 11
Gloves, medium, vinyl, non-sterile, non-latex, powder-free	6, 11

H

Heparin lock/IV intermittent injection site, long with luer lock	11, 17
--	--------

I

IV administration set	17
IV administration set, 10 drop/mL, unvented, adult	7, 12
IV administration set, 10 drop/mL, vented, adult	7

IV administration set, 60 drop/mL, unvented, pediatric	7
IV administration set, 60 drop/mL, vented, pediatric	7
IV catheter and needle	17
IV catheter/needle 18ga x 1 1/4" *Not pictured	7
IV catheter/needle, 18ga x 2"	7
IV catheter/needle 20ga x 1 1/4" *Not pictured	7
IV catheter/needle, 24ga x 5/8"	14
IV catheter/needle, butterfly, 21ga x 3/4"	7
IV site transparent dressing, 2" x 3"	7
L	
Laryngoscope illuminator, non-disposable/reusable	12
Laryngoscope, large, disposable and laryngoscope illuminator, non-disposable	12
Laryngoscope, small, disposable	14
Levophed injection, 1mg/mL, 4mL ampule	8
M	
Manual pulmonary resuscitator (MPR) bag/mask, adult	12
Manual pulmonary resuscitator (MPR) bag/mask, pediatric	12, 15
Methylprednisolone injection, 125mg, 2mL Act-O-Vial	12
Midazolam injection, 5mg/mL, 5mL vial	8
Morphine sulfate injection, 10mg/mL, 1mL pre-filled carpject syringe with luer lock	8
N	
Nasal cannula, adult	8
Nasogastric tube, 10Fr, pediatric	15
Nasogastric tube 14Fr, adult *Not pictured	13
Nasogastric tube 16Fr, adult	13
Nebulizer, t-mouthpiece, 7ft. tube	13, 17
Non-rebreather oxygen mask, adult	8, 13
Non-rebreather oxygen mask, pediatric	15
O	
Oral syringe, 10mL	15
Oropharyngeal airway, 40mm *Not pictured	15
Oropharyngeal airway, 60mm, pediatric	15
Oropharyngeal airway, 90mm, adult	13
Oxygen tubing, 7ft. (5-7mm)	16
P	
Povidone iodine swabsticks, triples	8, 17
S	
Sodium chloride 0.9%, 100mL bag	8
Sodium chloride 0.9%, 1000mL bag	9
Sodium chloride 0.9% injection, 3mL pre-filled carpject syringe with luer lock, preservative-free ..	9
Sterile water for injection, 10mL vial	9
Suction catheter, 14Fr, sterile, pediatric	15
Suction catheter, 18Fr, sterile, adult	13
Syringe, 10mL with 20ga 1 1/2" needle	9
T	
Tape, silk, 1" x 10 yd, roll	9
Tourniquet, latex-free	9, 17
Transparent catheter dressing	17
Tweezers	9
Y	
Yankauer suction tube	13