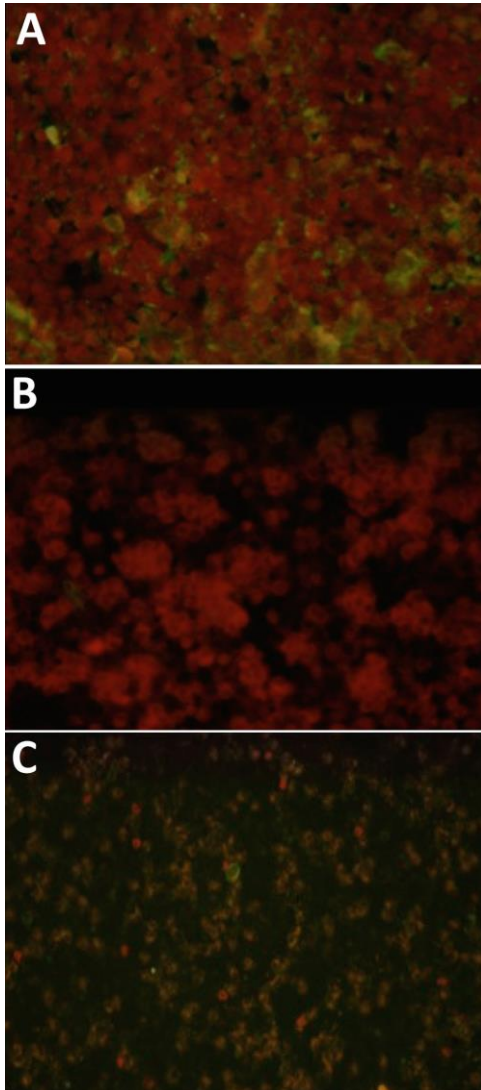


Oropouche Virus–Associated Aseptic Meningoencephalitis, Southeastern Brazil

Appendix



Appendix Figure. Indirect immunofluorescence (IIF) antibody test results for a 28-year-old man with Oropouche virus (OROV) infection, southeastern Brazil. IIF was performed using anti-human IgG conjugated with Fluorescein isothiocyanate. A) Vero cells and anti-OROV serum (negative control). B) Vero cells plus OROV and anti-OROV serum (positive control). C) Patient's serum sample and anti-OROV serum. Original magnification $\times 40$.