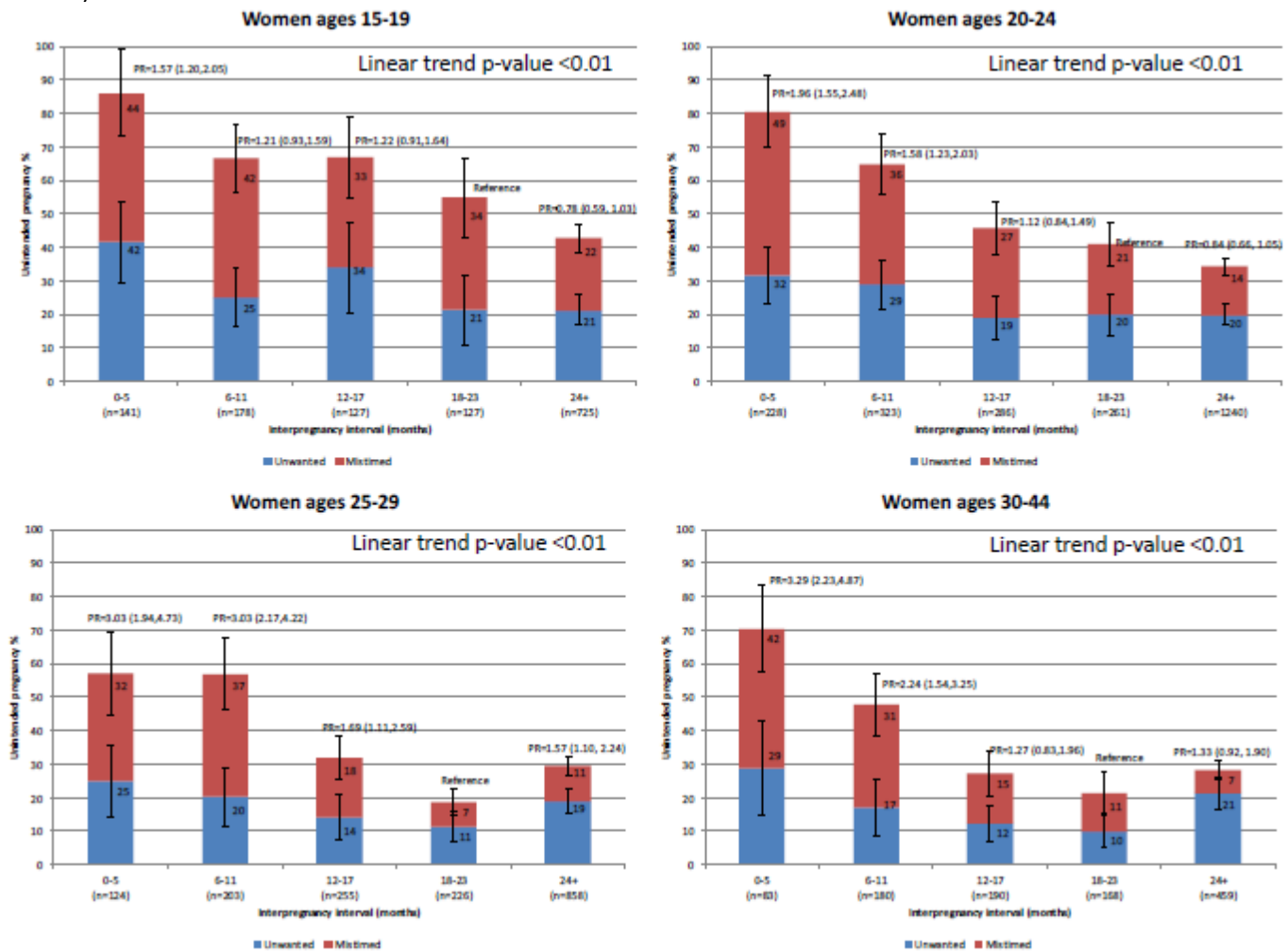


Figure 2: The percentage of pregnancies unintended (unwanted or mistimed) by interpregnancy interval since last live birth, by maternal age at time of last live birth: NSFG 2006-2010, 2011-2015. Prevalence ratio (PR) and 95% confidence interval for unintended pregnancy are in comparison to reference group 18-23 months (6,382 pregnancies among 5,079 women).



Linear trends were assessed using logistic models with interpregnancy interval (0-5, 6-11, 12-17, 18-23, 24+ months) as a continuous variable.