

Supplementary Online Content

Ogden CL, Carroll MD, Lawman HG, et al. Trends in obesity prevalence among children and adolescents in the United States, 1988-1994 through 2013-2014. *JAMA*. doi:10.1001/jama.2016.6361

eTable 1. Prevalence of obesity and extreme obesity by age and education of household head, youth 2-19 years: US, 2011-2014

eTable 2. Demographic differences (odds ratio, 95% confidence interval) in obesity and extreme obesity, youth 2-19 years, US, 2011-2014

eTable 3. P-values for adjusted linear and quadratic trend analyses of obesity and extreme obesity prevalence, by age, 1988-1994 through 2013-2014

eTable 4. P-values for unadjusted and adjusted linear trend analyses of obesity and extreme obesity prevalence, by age, 2005-2006 through 2013-2014

eFigure 1. Prevalence of obesity, youth 2-19 years, by age, US, 1988-1994 through 2013-2014

eFigure 2. Prevalence of extreme obesity, youth 2-19 years, by age, US, 1988-1994 through 2013-2014

This supplementary material has been provided by the authors to give readers additional information about their work.

eTable 1. Prevalence of obesity and extreme obesity by age and education of household head, youth 2-19 years: US, 2011-2014^a

Age group (y) by education of household head	Obesity ^b			Extreme obesity ^c		
	Percent	95% CI		Percent	95% CI	
		Lower limit	Upper limit		Lower limit	Upper limit
2-19						
<High school degree	21.0	18.5	23.8	7.9	6.4	9.7
High school degree	22.2	19.1	25.5	7.4	5.8	9.3
>High school degree	14.1	12.0	16.4	4.6	3.4	6.0
2-5						
<High school degree	13.6	10.1	17.6	3.4	1.8	5.8
High school degree	12.7	8.5	17.9	2.1 ^d	0.7	4.8
>High school degree	5.7	3.9	8.1	1.0 ^e	0.4	2.1
6-11						
<High school degree	22.9	19.7	26.4	8.9	6.8	11.3
High school degree	23.1	18.1	28.7	7.6	5.1	10.7
>High school degree	14.1	11.1	17.5	4.0	2.7	5.8
12-19						
<High school degree	23.2	18.8	28.0	9.4	6.6	13.0
High school degree	25.9	19.7	32.9	9.7	6.7	13.3
>High school degree	18.2	14.4	22.5	6.7	4.7	9.2

a. Data from the National Health and Nutrition Examination Survey; estimates are weighted

b. Obesity was defined as at or above the age and sex specific 95th percentile on the BMI-for-age CDC growth charts

c. Extreme obesity was defined as a BMI at or above 120% of the 95th percentile of BMI-for-age

d. Relative standard error = 43%

e. Relative standard error = 35%

BMI: body mass index; CI: confidence interval

eTable 2. Demographic differences (odds ratio, 95% confidence interval) in obesity and extreme obesity, youth 2-19 years, US, 2011-2014^b

Demographic group	Obesity ^c	Extreme obesity ^d
Sex		
Male	Reference	Reference
Female	1.01 (0.85-1.22)	1.05 (0.81-1.35)
Age group, y		
2-5	Reference	Reference
6-11	2.29 (1.73-3.03)	3.57 (2.11-6.04)
12-19	2.82 (2.08-3.84)	5.06 (3.29-7.78)
Race/Hispanic origin		
Non-Hispanic white	Reference	Reference
Non-Hispanic black	1.34 (1.03-1.75)	1.95 (1.32-2.88)
Non-Hispanic Asian	0.57 (0.39-0.82)	0.31 (0.14-0.71)
Hispanic	1.48 (1.23-1.78)	1.59 (1.05-2.39)
Education of household head		
<High school degree	1.41 (1.13-1.75)	1.54 (1.12-2.12)
High school degree	1.61 (1.27-2.04)	1.49 (1.03-2.15)
>High school degree	Reference	Reference

- a. Multivariate logistic regression model including all 4 demographic covariates
- b. Data from the National Health and Nutrition Examination Survey, estimates are weighted
- c. Obesity was defined as at or above the age and sex specific 95th percentile on the BMI-for-age CDC growth charts
- d. Extreme obesity was defined as a BMI at or above 120% of the 95th percentile of BMI-for-age

eTable 3. P-values for adjusted^a linear and quadratic trend analyses of obesity^b and extreme obesity^c prevalence, by age, 1988-1994 through 2013-2014^d

	Age Group, y			
	2-19	2-5	6-11	12-19
Obesity				
Linear	<0.001	0.41	<0.001	<0.001
Quadratic	0.006	0.001	0.049	0.23
Extreme obesity				
Linear	<0.001	0.45	0.01	<0.001
Quadratic	0.20	0.18	0.45	0.30

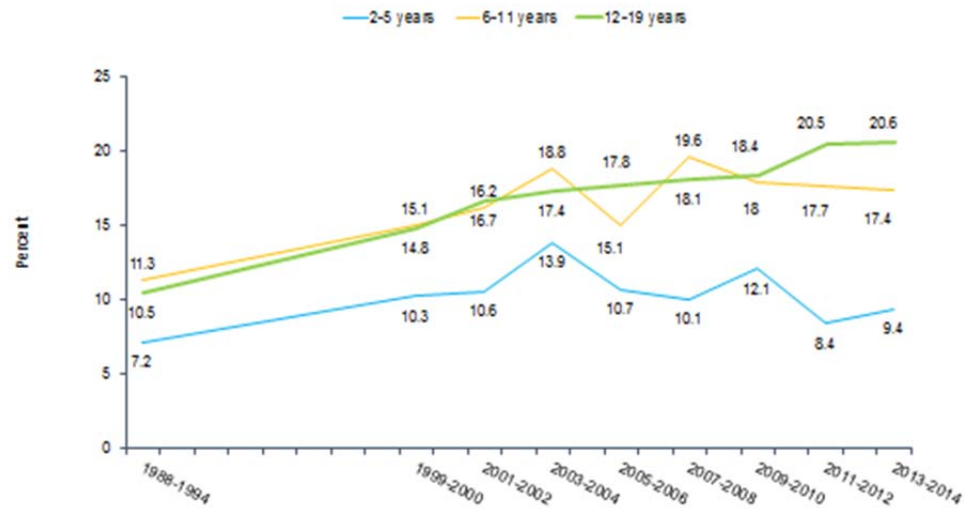
- a. 2-19 years adjusted for sex, age group, race-Hispanic origin and education of household head; age specific adjusted for sex, race-Hispanic origin and education of household head
- b. Obesity was defined as at or above the age and sex specific 95th percentile on the BMI-for-age CDC growth charts
- c. Extreme obesity was defined as a BMI at or above 120% of the 95th percentile of BMI-for-age.
- d. Data from the National Health and Nutrition Examination Survey

eTable 4. P-values for unadjusted and adjusted^a linear trend analyses of obesity^b and extreme obesity^c prevalence, by age, 2005-2006 through 2013-2014^d

	Age Group, y			
	2-19	2-5	6-11	12-19
Obesity				
Unadjusted	0.37	0.27	0.67	0.19
Adjusted	0.24	0.34	0.62	0.14
Extreme obesity				
Unadjusted	0.11	0.87	0.39	0.09
Adjusted	0.08	0.78	0.35	0.07

- a. 2-19 years adjusted for sex, age group, race-Hispanic origin and education of household head; age specific adjusted for sex, race-Hispanic origin and education of household head
- b. Obesity was defined as at or above the age and sex specific 95th percentile on the BMI-for-age CDC growth charts.
- c. Extreme obesity was defined as a BMI at or above 120% of the 95th percentile of BMI-for-age.
- d. Data from the National Health and Nutrition Examination Survey

Figure 1. Prevalence of obesity, youth 2-19 years, by age, US, 1988-1994 through 2013-2014



Obesity defined as at or above the sex specific 95th percentile of BMI-for-age CDC growth charts; extreme obesity defined as 120% of the sex specific 95th percentile of BMI-for-age CDC growth charts
 Source: CDC/NCHS, National Health and Nutrition Examination Survey

eFigure 2. Prevalence of extreme obesity, youth 2-19 years, by age, US, 1988-1994 through 2013-2014

