

Influenza Activity Update

Lisa Grohskopf, MD, MPH

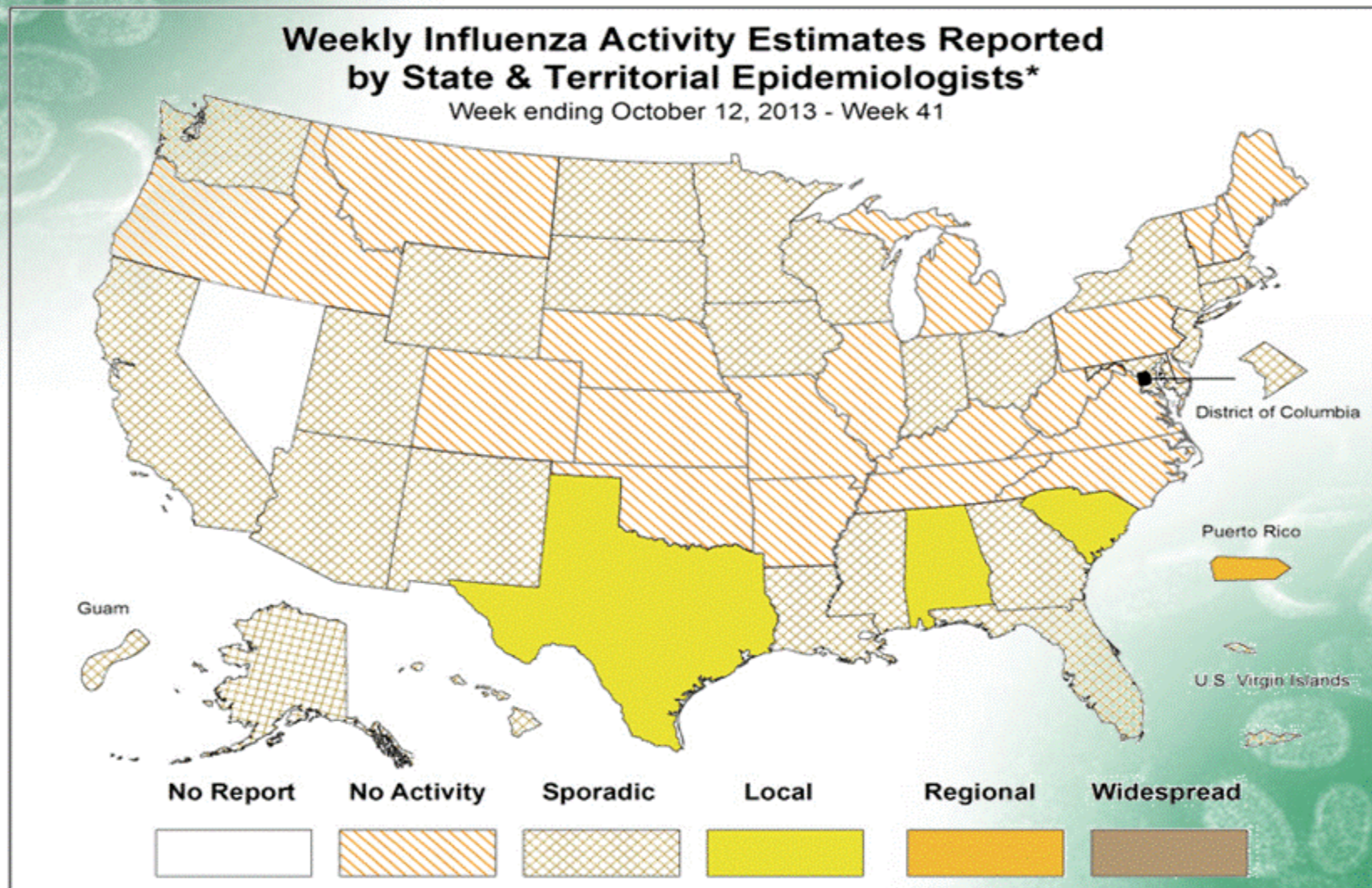
Advisory Committee on Immunization Practices
October 24, 2013

FLUVIEW

A Weekly Influenza Surveillance Report Prepared by the Influenza Division

Weekly Influenza Activity Estimates Reported by State & Territorial Epidemiologists*

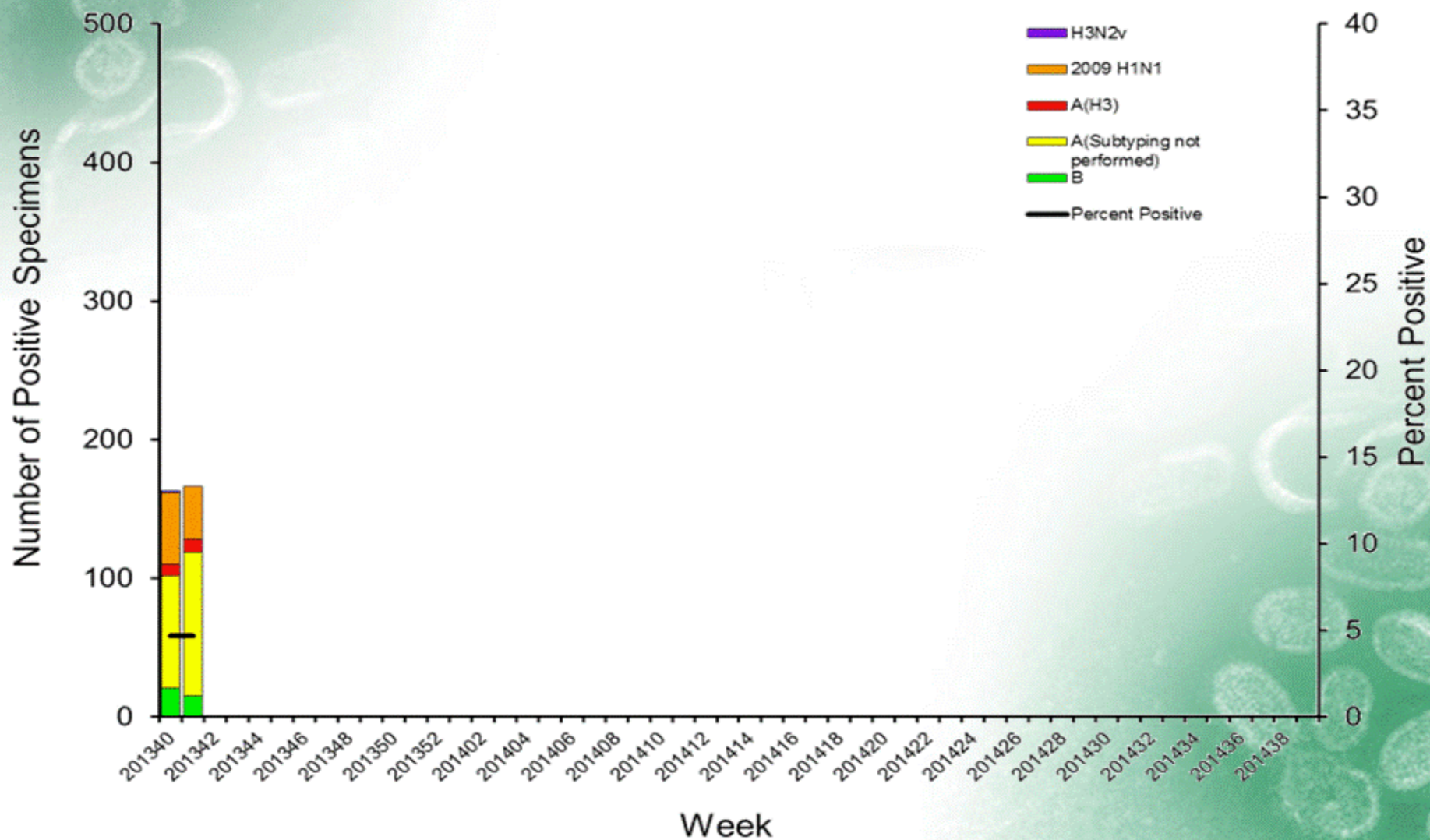
Week ending October 12, 2013 - Week 41



* This map indicates geographic spread & does not measure the severity of influenza activity

A Weekly Influenza Surveillance Report Prepared by the Influenza Division

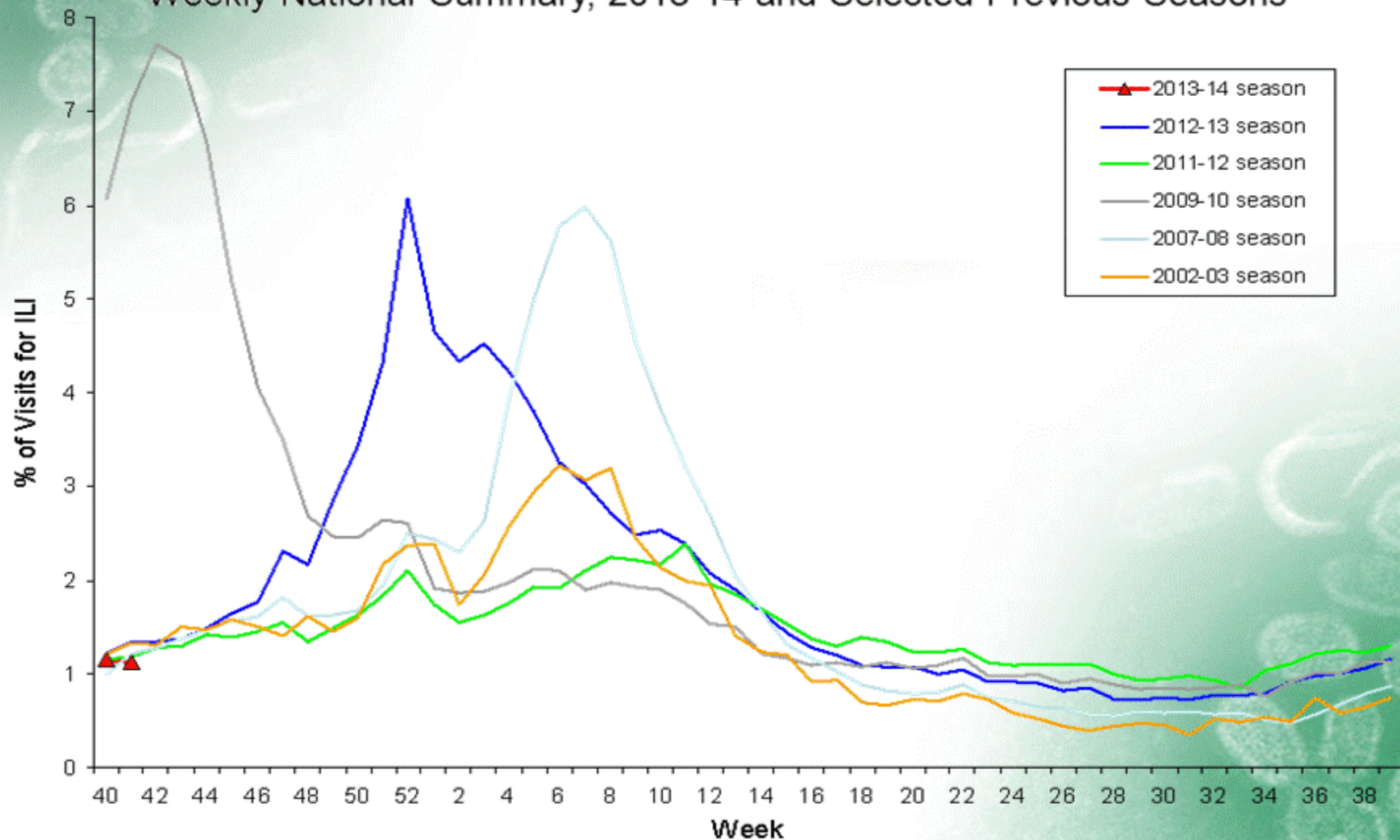
Influenza Positive Tests Reported to CDC by U.S. WHO/NREVSS Collaborating Laboratories, National Summary, 2013-14



FLUVIEW

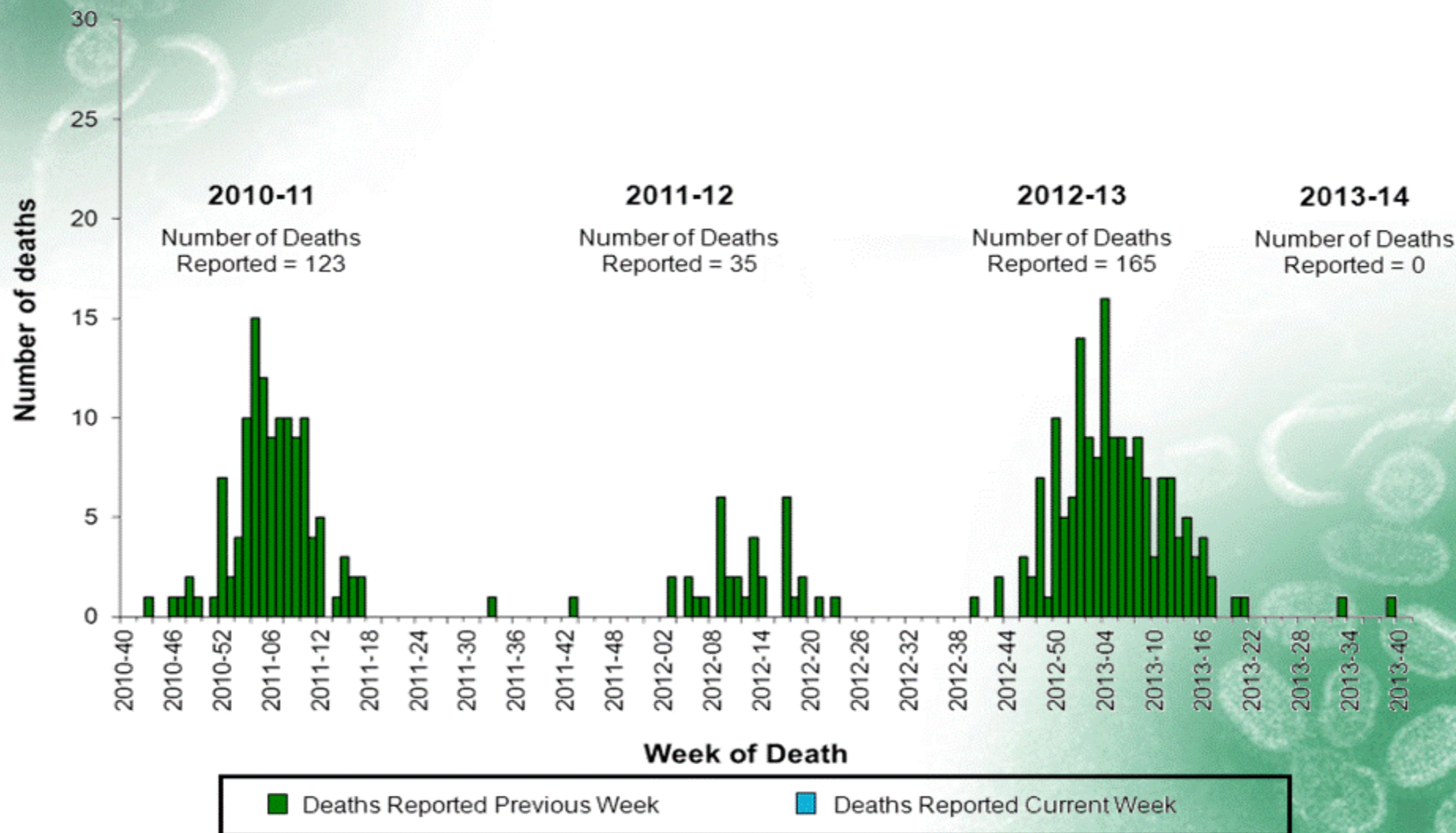
A Weekly Influenza Surveillance Report Prepared by the Influenza Division

Percentage of Visits for Influenza-like Illness (ILI) Reported by
the U.S. Outpatient Influenza-like Illness Surveillance Network (ILINet),
Weekly National Summary, 2013-14 and Selected Previous Seasons



A Weekly Influenza Surveillance Report Prepared by the Influenza Division

Number of Influenza-Associated Pediatric Deaths by Week of Death: 2010-11 season to present



Thank You!

Acknowledgements:

Lyn Finelli

Lynnette Brammer

Matthew Biggerstaff

Anna Bramley

Lenee Blanton

Rosaline Dhara

Scott Epperson

Krista Kniss

Desiree Mustaquim

For more information please contact Centers for Disease Control and Prevention

1600 Clifton Road NE, Atlanta, GA 30333

Telephone, 1-800-CDC-INFO (232-4636)/TTY: 1-888-232-6348

E-mail: cdcinfo@cdc.gov Web: www.cdc.gov

