

PUBLIC HEALTH REPORTS

VOL. 32

APRIL 20, 1917

No. 16

POLIOMYELITIS (INFANTILE PARALYSIS).

PREVALENCE IN CITIES DURING 1916.

The table which follows shows the recorded prevalence of poliomyelitis during the year 1916 in cities of the United States having over 100,000 population. The cities have been divided into groups according to their population and arranged in each group in the order of the prevalence of the disease as indicated by the recorded cases. Data are given for all the cities of the United States having an estimated population of 100,000 or over as of July 1, 1916, with the exception of Cambridge, Mass., and Memphis, Tenn.

City.	Indicated case rate per 1,000 inhabitants.	Indicated fatality rate per 100 cases.	Cases reported.	Deaths registered.	Population July 1, 1916 (estimated by U. S. Census Bureau).
Over 500,000 inhabitants:					
St. Louis, Mo.	0.030	82.61	23	19	757,309
Los Angeles, Cal.038	21.05	19	4	503,812
Cleveland, Ohio.056	15.79	38	6	674,073
Pittsburgh, Pa.059	35.29	34	12	579,090
Detroit, Mich.105	26.67	60	16	571,784
Chicago, Ill.114	17.19	285	49	2,497,722
Baltimore, Md.348	34.15	205	70	589,621
Philadelphia, Pa.588	30.52	1,006	307	1,709,518
Boston, Mass.861	24.42	651	159	756,476
New York, N. Y.	1.610	27.13	9,023	2,448	5,602,841
From 300,000 to 500,000 inhabitants:					
Seattle, Wash.023	8	348,639
Buffalo, N. Y.028	38.46	113	5	468,558
Milwaukee, Wis.037	12.50	16	2	436,535
New Orleans, La.059	9.09	22	2	371,747
San Francisco, Cal.067	6.45	31	2	463,516
Washington, D. C.107	15.38	39	6	363,980
Cincinnati, Ohio.115	8.51	47	4	410,476
Minneapolis, Minn.333	9.09	121	11	363,454
Jersey City, N. J.630	16.06	193	31	306,345
Newark, N. J.	3.478	26.37	1,422	375	408,894
From 200,000 to 300,000 inhabitants:					
Kansas City, Mo.003	1	297,847
Denver, Colo.027	7	260,800
Rochester, N. Y.043	18.18	11	2	256,417
Columbus, Ohio.051	27.27	11	3	214,878
Louisville, Ky.063	6.97	15	1	238,810
Portland, Oreg.064	10.53	19	2	235,463
Indianapolis, Ind.077	23.81	21	5	271,708
St. Paul, Minn.324	10.00	80	8	247,232
Providence, R. I.463	16.95	118	20	254,960

¹ The health officer states that cases are known not to be completely reported.

City.	Indicated case rate per 1,000 inhabitants.	Indicated fatality rate per 100 cases.	Cases reported.	Deaths registered.	Population July 1, 1916 (estimated by U. S. Census Bureau).
From 100,000 to 200,000 inhabitants:					
Spokane, Wash.....	0.007	1	150,326
Nashville, Tenn.....	.009	1	117,057
Oakland, Cal.....	.010	2	196,604
Tacoma, Wash.....	.010	100.00	1	1	112,770
Dallas, Tex.....	.016	2	124,527
Fort Worth, Tex.....	.019	2	104,562
Atlanta, Ga.....	.021	50.00	4	2	190,558
Youngstown, Ohio.....	.026	100.00	3	3	108,385
Salt Lake City, Utah.....	.034	4	117,399
Houston, Tex.....	.036	75.00	4	3	112,307
Omaha, Nebr.....	.036	6	165,470
Reading, Pa.....	.046	5	109,381
San Antonio, Tex.....	.057	42.86	7	3	123,831
Lawrence, Mass.....	.070	28.57	7	2	100,560
Fall River, Mass.....	.078	20.00	10	2	128,366
Birmingham, Ala.....	.110	15.00	20	3	181,762
Scranton, Pa.....	.116	11.76	17	2	146,811
Des Moines, Iowa.....	.118	33.33	12	4	101,606
Richmond, Va.....	.128	15.00	20	3	156,687
Dayton, Ohio.....	.134	17.65	17	3	127,224
Lowell, Mass.....	.150	23.53	17	4	113,245
Worcester, Mass.....	.153	12.00	25	3	163,314
New Bedford, Mass.....	.178	4.76	21	1	118,158
Grand Rapids, Mich.....	.249	18.75	32	6	128,291
Albany, N. Y.....	.269	14.29	28	4	104,199
Lynn, Mass.....	.430	31.52	44	14	102,425
Hartford, Conn.....	.559	16.13	62	10	110,900
Toledo, Ohio.....	.574	22.73	110	25	191,554
Bridgeport, Conn.....	.600	30.14	73	22	121,579
Camden, N. J.....	.621	33.33	106	22	106,233
New Haven, Conn.....	.635	17.99	95	17	149,685
Paterson, N. J.....	.708	20.41	98	20	133,443
Springfield, Mass.....	.831	25.00	88	22	105,942
Syracuse, N. Y.....	1.471	27.95	229	64	155,624
Trenton, N. J.....	1.497	29.94	167	50	111,593

¹ The health officer states that cases are known not to be completely reported.

POLIOMYELITIS IN NEW ZEALAND.

THE PREVALENCE OF POLIOMYELITIS (INFANTILE PARALYSIS) IN THE WELLINGTON HEALTH DISTRICT, 1914-1916.

The first important epidemic prevalence of poliomyelitis in New Zealand occurred early in the year 1914 and was fairly widespread throughout the Dominion. In the Wellington Health District the disease was generally diffused, but only 65 cases were reported, the largest number occurring in any one week being 8. In 1915 only 3 cases, occurring between March 26 and December 30, were notified in the district. In 1916 the disease again became epidemic in the district, with a total of 339 cases reported from January 31 to April 30, 1916. The first cases occurred simultaneously in three widely separated localities. The monthly totals were: January, 3 cases; February, 65 cases; March, 178 cases; April, 93 cases.

As regards age groups, the greatest number of cases, viz, 71, occurred in the group of 1 to 2 years. The sex distribution was, male, 199; female, 140.

Of the 339 cases in 1916, 46 terminated fatally, 28 deaths occurring in males and 18 in females. Six deaths occurred in infants under

1 year of age, six in the age group 1 year to 2 years, and nine each in the groups of 15 to 20 and 20 to 30 years. The disease occurred generally along the lines of railway traffic. The total estimated population of Wellington Health District, which includes the Provinces of Wellington, Taranaki, Hawkes Bay, Marlborough, and Nelson, and Cook County, is 379,102.

BIOLOGICAL PRODUCTS.

NOTICE TO THOSE CONCERNED.

In view of the fact that some establishments licensed for the manufacture and sale of biological products located in Germany have not been inspected within the time required by regulation and on account of present conditions will be inaccessible to inspection for an indefinite period of time, the department has revoked the licenses of these establishments, and notification of this fact is hereby given to all concerned.

The establishments in question with their license numbers and products are the following:

No. of license.	Name.	Products.
12	Chemische Fabrik auf Actien, Berlin, Germany.	Antigonococcus vaccine, antistreptococccic serum, diphtheria antitoxin, and tuberculin.
24	Farbwerke, vormals Meister Lucius und Brüning, Hoechst on Main, Germany.	Antidysenteric serum, antimeningococccic serum, anti-pneumonic serum, antistreptococccic serum, antitetic serum, diphtheria antitoxin, tuberculins.
29	The Behringwerk, Marburg, Germany.	Antitetic serum and tuberculin.
31	E. Merck, Darmstadt, Germany.....	Antimeningococccic serum, antipneumonic serum, antitreptococccic serum, diphtheria antitoxin, jequiritol serum, leucofermantin (antitryptic sheep serum), normal horse serum (liquid and dried), tuberculins, and bacterial vaccines prepared from colon bacillus, dysentery bacillus, gonococcus pneumococcus, staphylococci, streptococci, and typhoid bacillus.
32	Kalle & Co., Biebrich, Germany.....	Tuberculin (Rosenbach).
39	Pharmaceutisches Institut Ludwig Wilhelm Ganz, Oberursel bei Frankfurt a. M., Germany.	Antidysenteric serum.
55	Chemische Fabrik Güstrow, Güstrow I. M., Germany.	Staphylococcus vaccine.

DETECTION OF HYDROCYANIC ACID GAS.

USE OF SMALL ANIMALS FOR THIS PURPOSE.

By S. B. GRUBBS, Surgeon, United States Public Health Service.

Instructions issued on November 4, 1916, to officers of the Public Health Service on the subject of hydrocyanic acid gas fumigation of vessels directed that "Before declaring it safe to enter holds, a captive animal (guinea pig, rat, cat, etc.) shall be lowered and exposed to the aerial content of such compartments, and the effect produced, if any, shall be a guide in estimating the amount of gas present."

Just what dilution of hydrocyanic acid gas should be considered dangerous to man can not be definitely stated, but in fumigating the holds of vessels any gas that brings on vertigo may cause a fatal fall.¹ In trying to determine this point several volunteers have breathed gas from $\frac{1}{4}$ and from $\frac{3}{4}$ ounce sodium cyanide per 1,000 cubic feet for two minutes and one and one-half minutes, respectively, without feeling any effect, but this has at other times caused dizziness. In these cases the men were breathing quietly and the effects would doubtless be considerably increased and the danger of falling would be greater if the same men were undergoing physical exertion such as climbing out of the hold of a vessel. The writer believes that where work must be done and a climb is required to reach the open air a mixture of 0.024 per cent hydrocyanic acid gas (one-half ounce sodium cyanide per 1,000 cubic feet) should be considered the limit of safety.

With this limitation in mind the susceptibility of small animals usually available for the purpose of testing holds has been studied. A good test animal may be said to be one that is readily obtained and easily handled and that promptly shows visible symptoms when breathing the gas in considerable dilution, but does not soon die after showing symptoms.

The following experiments were made in a practically air-tight room of about 500 cubic feet. The gas was generated in a jar placed in the center of the room, and time in each case was reckoned from the minute the sodium cyanide was dropped into the acid. The animals were confined in small cages placed in front of a window in one corner of the room 4 feet above the floor. They were about 5 feet from the generator. Ninety-six to ninety-eight per cent sodium cyanide, 1 ounce of which in 1,000 cubic feet gives approximately 0.048 per cent of hydrocyanic acid gas, was used.

¹ Passed Asst. Surg. French Simpson has noted that employees exposed to the fumes of cyanide in their routine work seemingly acquire a considerable resistance to the effects of gas.

	1 ounce NaCN per 1,000 cubic feet; temperature 40° F.		2 ounce NaCN per 1,000 cubic feet; temperature 40° F.		3 ounce NaCN per 1,000 cubic feet; temperature 17° F.		4 ounce NaCN per 1,000 cubic feet; temperature 40° F.		5 ounce NaCN per 1,000 cubic feet; temperature 80° F.		6 ounce NaCN per 1,000 cubic feet; temperature 35° F.	
	First effect.	Final result.	First effect.	Final result.	First effect.	Final result.	First effect.	Final result.	First effect.	Final result.	First effect.	Final result.
Guinea pig.....	5 { Mn-utes. Dead; 20 minutes.	35 { Mn-utes. Removed alive; 1 hour; re-covered.	20 { Mn-utes. Alive; 1 hour; died later.	None. None.	None. None.	None. None.	None. None.	None. None.	None. None.	None. None.	Mn-utes.	Mn-utes.
Adult wild rat.....				6 Dead; 42 minutes. 9 Alive; 1 hour; died later.	6 Dead; 50 minutes.	12 { Dead; 50 minutes.						
Half-grown wild rat.				6 Alive; 1 hour; re-covered. 9 Dead; 25 minutes.	8 { Dead; 50 minutes.							
Adult tame rat.....	2 { Dead; 15 minutes.	4 { Dead; 40 minutes.	5 { Removed alive; 10 minutes. 13 Removed alive; 15 minutes.	7 Alive; 1 hour; re-covered. 8 Alive; 1 hour; re-covered.	8 { Removed alive; 1 hour; re-covered.	8 { Removed alive; 1 hour; re-covered.	10 { Removed; 25 minutes; re-covered.	None. None.	None. None.	None. None.		Removed; 1 hour.
Half-grown tame rat.				5 Alive; 1 hour; re-covered. 6 Dead; 33 minutes.	6 { Removed alive; 1 hour; died later.							
Mouse.....			120 { Dead; 25 minutes. 4 Removed alive; 10 minutes.	5 { Dead; 37 minutes. 11 Dead; 55 minutes.	5 { Dead; 40 minutes.	5 { Removed; 25 minutes; re-covered.	10 { Removed; 25 minutes; re-covered.	(?)	(?)	(?)		Dead; 30 minutes.
Cat.....		3 50 minutes.	145 { Dead; 24 minutes. 6 Dead; 8 minutes. 1 Dead; 3 minutes.	9 { Dead; 33 minutes.	5 { Removed alive; 1 hour; re-covered.							
Sparrow.....			8 { Dead; 9 minutes.									
Pigeon.....												

* Not noted.

† Seconds.

From these experiments and from our regular work the following observations may be made:

Guinea pigs.—Although usually available and easily handled, guinea pigs are quite resistant to hydrocyanic acid gas and may easily show no symptoms after 5 or 10 minutes in percentages of gas that may be dangerous to man. They are, therefore, the least suited of animals tried, and if used to detect cyanide gas due allowance for their superior resisting powers should be made.

Sparrows.—These birds are very susceptible indicators, but die almost immediately after showing the first symptoms. It is believed that canary birds, which are used by the Bureau of Mines to indicate the presence of carbon monoxide gas, would act in the same way. Sparrows are usually plentiful and are easily trapped.

Mice.—Mice are slightly less susceptible than sparrows. They may be bred in captivity with little care and are easily handled. On the other hand, they are too small to be easily watched from the deck in case they are lowered to the bottom of the square of the hatch of an ordinary vessel, and quickly die if exposed to wet or cold.

Cats.—Cats have certain advantages in cyanide testing. They feel the effects of the gas about as quickly as rats or mice, and their efforts to escape at this time are both violent and noisy, allowing an opportunity to remove the animal before fatal results occur. A disadvantage is that a cat, unless kept caged constantly, may effectively resist capture, especially after being used once.

Rats.—It was at first thought that there would be a difference in susceptibility between wild and tame rats and between adult and young rats, but as will be seen the difference is not constant and may be disregarded. Rats, while slightly less susceptible to hydrocyanic acid gas than mice, are probably the best animals for routine use when everything is considered. Wild rats become easily terrified and may injure themselves. Tame rats do not have this fault, may be easily reared in captivity, and may be handled without difficulty. They should be protected from extremes of heat and cold at all times, as otherwise they may die unexpectedly.

Directions for raising rats and mice are given at the end of this article.

Conclusions.

Sparrows or other small birds are the most delicate live indicators for hydrocyanic acid gas, but are not recommended for routine work.

Mice or tame rats are almost as susceptible as sparrows and are probably the best test animals available.

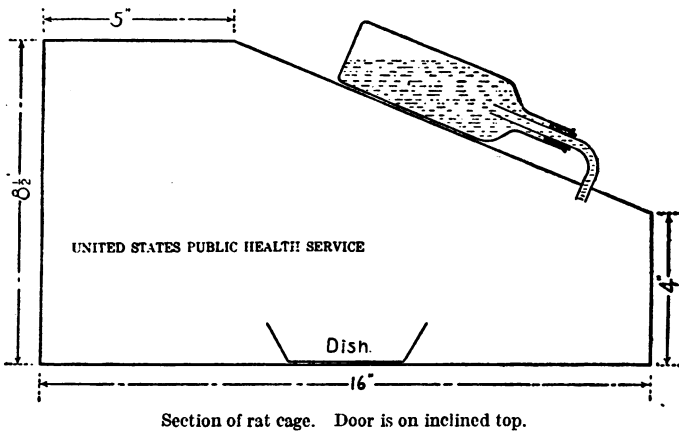
Cats are sufficiently susceptible and with care the same animal may be used several times.

Guinea pigs are quite resistant to the effects of the gas and should never be used where rats are available.

If guinea pigs be the only test animals obtainable, exposure should be prolonged and other allowances made for these animals' increased resistance to the gas, as indicated in the included table.

DIRECTIONS FOR RAISING RATS AND MICE.¹

Breeding cages.—Rats: Cages measure (see diagram), 16 inches long, 8½ inches high at back, 4 inches high in front, and have a door 5 inches square on top. Each cage sets in a galvanized-iron tray 15 by 17 by 3½ inches. The racks on which these cages are placed are most conveniently made to hold five tiers of cages. The measurements of these racks are 78 inches high, 64 inches wide, 31 inches deep. This provides for two rows of cages, one facing on either side of the rack. The racks are made skeleton fashion of strips of creosoted wood about 1½ by 1½ inches for uprights; 4½ by ¼ inch for cross strips. The cages themselves are made of wire screening of one-half inch mesh. The food is placed in clean porcelain dishes, one to a cage. Water is provided through a bottle with a glass tube inserted through a rubber cork (see diagram). Each tray is filled to the depth of a half inch under the cage with clean sawdust, which is changed once a week. The food consists of a daily feeding of four parts corn to one part sun-



flower seed, a mash of bread and milk smeared on the meshes of the cage once a day, and large squares of dog biscuit wired to the back of the cage.

Mice: The methods for mice differ mainly in using smaller sized cages, viz, 9 by 9 by 7 inches, and more cages to the rack. The mouse racks are made of the same material as the rat racks except that the cages rest on solid boards.

The racks are 60 inches high, 72 inches long, and 14 inches deep. This accommodates 10 cages to the shelf, 1 row deep and 4 tiers to the rack. These cages are not set on trays as the rat cages are, but rest on clean sawdust distributed along each shelf. Mesh for mouse cages should be one-quarter inch to prevent young from falling or crawling through. The same food is used as for rats.

Breeds best suited for raising.—Rats: The hardiest rats are those derived from the Norway breed *Mus norvegicus*, which is the common gray rat in our cities. When caught wild they so preserve their wild temperament that they are rather difficult to propagate, but tamed varieties of these which show a high fertility can be procured from laboratories or fanciers.

Mice: The best breeds of mice may all be classified under the common house mouse, since domesticated varieties have come from the common house mouse *Mus musculus*.

¹ Written for this report by Prof. W. E. Castle and Mr. L. C. Dunn, Bussey Institution for Research in Applied Biology, Harvard University.

The albino, black, and gray varieties are the best breeders. The yellow varieties are especially to be avoided, since the size of the litter and length of breeding period are both less favorable to procuring large numbers. These yellow mice also have a tendency toward an early accumulation of fat which hinders their breeding.

Number of litters that may be expected per year.—From each pair of rats about 6 to 10 litters may be expected during life. They are mature at three months and reach the climax of their breeding ability at about one year. Ordinarily they will not breed after a year and a half old. For the mice this number is slightly larger and the breeding time about the same.

Number in each litter.—Rat litters average about 8. The period of gestation in rats is about 30 days, for mice exactly 21 days. Mouse litters average 6.

Destruction of young by older animals.—Both rats and mice, especially those recently caught, show a tendency to eat their first litter. This possibility decreases with the length of time in captivity and with the age of the animal. The eating is usually done by other females in the cage, so that the best method of prevention is:

1. Isolate the pregnant mothers from breeding cages.
2. Limit the number of mothers bred in any one cage.

Breeding age.—Rats breed at about three months and mice at about one to two months.

Number and sex to each cage.—For both rats and mice the best number has been found to be three females and one male to each cage.

Effects of temperature on breeding.—Both rats and mice breed best at the temperatures ordinarily maintained for human living purposes, say between 65° F. and 70° F. The temperature should be constant and variations above or below normal, although producing no specific effects, reduce the number of young that may be expected and the general vigor of the animals.

Miscellaneous information.—Cleanliness and clean food are important. Shredded tissue paper should be supplied to each cage for nesting. Both rats and mice are subject to the attack of an itch mite, which produces sores, especially on tails and ears. The prevention for this is the elimination of all suspected animals, and the cure is repeated dipping in lukewarm solution of creolin and water, 1 to 100. Cages may be sterilized by dipping in a boiling solution made up in the same way.

PREVALENCE OF DISEASE.

No health department, State or local, can effectively prevent or control disease without knowledge of when, where, and under what conditions cases are occurring.

UNITED STATES.

CEREBROSPINAL MENINGITIS.

Minnesota.

Collaborating Epidemiologist Bracken reported that during the period from March 17 to April 14, 1917, 86 cases of cerebrospinal meningitis, with 33 deaths, were notified in Minnesota, making a total of 124 cases, with 58 deaths, reported since January 1, 1917.

State Reports for March, 1917.

Place.	New cases reported.	Place.	New cases reported.
District of Columbia.....	7	Massachusetts—Continued.	
Maryland:		Norfolk County—	
Baltimore City.....	17	Quincy.....	1
Dorchester County—		Suffolk County—	
Cambridge.....	3	Boston.....	7
Total.....	20	Total.....	17
Massachusetts:		Vermont: Burlington.....	1
Berkshire County—		Wisconsin:	
Pittsfield.....	2	Columbia County.....	1
Bristol County—		Grant County.....	1
Fall River.....	1	Milwaukee County.....	6
Norton (town).....	1	Oneida County.....	1
Swansea (town).....	1	Pierce County.....	2
Essex County—		Vernon County.....	2
Beverly.....	1	Walworth County.....	2
Lynn.....	1	Total.....	15
Peabody (town).....	1		
Middlesex County—			
Lowell.....	1		

Arkansas Report for January, 1917.

During the month of January, 1917, cases of cerebrospinal meningitis were notified in Arkansas as follows: One case each in Mississippi and Polk Counties.

CEREBROSPINAL MENINGITIS—Continued.

City Reports for Week Ended Mar. 31, 1917.

Place.	Cases.	Deaths.	Place.	Cases.	Deaths.
Akron, Ohio.....	6	Milwaukee, Wis.....	2	2
Baltimore, Md.....	3	2	Montclair, N. J.....	14
Boston, Mass.....	2	Newark, N. J.....	1
Bridgeport, Conn.....	3	New York, N. Y.....	7	6
Buffalo, N. Y.....	1	Niagara Falls, N. Y.....	1
Chicago, Ill.....	5	1	Omaha, Neb.....	5
Cincinnati, Ohio.....	2	1	Philadelphia, Pa.....	37	11
Cleveland, Ohio.....	4	3	Pittsburgh, Pa.....	4	2
Columbus, Ohio.....	1	Pittsfield, Mass.....	1
Dayton, Ohio.....	1	Portsmouth, Va.....	2	2
Detroit, Mich.....	2	1	St. Louis, Mo.....	10	2
Duluth, Minn.....	3	2	St. Paul, Minn.....	2	1
Evansville, Ind.....	1	1	Salt Lake City, Utah.....	1
Fall River, Mass.....	1	Sioux City, Iowa.....	1
Hartford, Conn.....	7	4	Toledo, Ohio.....	1	1
Kansas City, Mo.....	4	2	Washington, D. C.....	4
Lincoln, Neb.....	1	1	Wheeling, W. Va.....	1
Lynn, Mass.....	1			

DIPHTHERIA.

See Diphtheria, measles, scarlet fever, and tuberculosis, page 579.

ERYSIPELAS.

City Reports for Week Ended Mar. 31, 1917.

Place.	Cases.	Deaths.	Place.	Cases.	Deaths.
Akron, Ohio.....	4	Long Beach, Cal.....	1
Ann Arbor, Mich.....	1	Los Angeles, Cal.....	6
Baltimore, Md.....	1	Milwaukee, Wis.....	8	1
Binghamton, N. Y.....	1	Newark, N. J.....	5
Boston, Mass.....	2	New York, N. Y.....	8
Brockton, Mass.....	1	Philadelphia, Pa.....	8	4
Buffalo, N. Y.....	6	3	Pittsburgh, Pa.....	16	1
Butte, Mont.....	1	Portland, Oreg.....	1
Chicago, Ill.....	41	3	Providence, R. I.....	3
Cincinnati, Ohio.....	4	Quincy, Ill.....	1
Cleveland, Ohio.....	11	1	Racine, Wis.....	2
Cumberland, Md.....	1	Reading, Pa.....	1
Dayton, Ohio.....	1	Rochester, N. Y.....	3	1
Detroit, Mich.....	8	1	St. Joseph, Mo.....	2
Duluth, Minn.....	1	St. Louis, Mo.....	23	2
El Paso, Tex.....	1	St. Paul, Minn.....	3	2
Hartford, Conn.....	3	San Francisco, Cal.....	5	3
Kalamazoo, Mich.....	1	Schenectady, N. Y.....	2
Kansas City, Mo.....	1	4	Seattle, Wash.....	1
Lancaster, Pa.....	1	Zanesville, Ohio.....	1
Lexington, Ky.....	1			

MALARIA.

Massachusetts Report for March, 1917.

Place.	New cases reported.	Place.	New cases reported.
Massachusetts:		Massachusetts—Continued.	
Bristol County—		Suffolk County—	
Fall River.....	1	Boston.....	1
Middlesex County—		Worcester County—	
Framingham (town).....	1	Douglas (town).....	1
Somerville.....	1		
		Total.....	5

MALARIA—Continued.

Arkansas Report for January, 1917.

Place.	New cases reported.	Place.	New cases reported.
Arkansas:		Arkansas—Continued.	
Carroll County.....	2	Ouachita County.....	1
Clay County.....	1	Perry County.....	4
Cleveland County.....	6	Phillips County.....	14
Greene County.....	12	Polk County.....	2
Izard County.....	6	Pope County.....	7
Jackson County.....	4	Sevier County.....	51
Lafayette County.....	16	White County.....	4
Mississippi County.....	19	Total.....	157
Newton County.....	8		

City Reports for Week Ended Mar. 31, 1917.

Place.	Cases.	Deaths.	Place.	Cases.	Deaths.
Charleston, S. C.....		1	Richmond, Va.....	1	
Detroit, Mich.....		1	Sacramento, Cal.....	2	

MEASLES.

California—Los Angeles.

Senior Surg. Brooks reported that during the week ended April 7, 1917, 301 cases of measles were notified in Los Angeles, Cal.

Illinois—Cairo.

Acting Asst. Surg. Barrows reported that during the week ended April 7, 1917, 648 cases of measles, with 4 deaths, were notified in Cairo, Ill.

See also Diphtheria, measles, scarlet fever, and tuberculosis, page 579.

PELLAGRA.

State Reports for March, 1917.

During the month of March, 1917, one case of pellagra was notified in Maryland, at Nanticoke, Wicomico County, and one case in Massachusetts, at Lowell, Middlesex County.

Arkansas Report for January, 1917.

Place.	New cases reported.	Place.	New cases reported.
Arkansas:		Arkansas—Continued.	
Cleveland County.....	4	Polk County.....	1
Drew County.....	3	Pope County.....	3
Logan County.....	1	Total.....	12

PELLAGRA—Continued.

City Reports for Week Ended Mar. 31, 1917.

Place.	Cases.	Deaths.	Place.	Cases.	Deaths.
Birmingham, Ala.....		1	Lexington, Ky.....		1
Charleston, S. C.....		2	Mobile, Ala.....		1
Concord, N. H.....		1	New Orleans, La.....	2	2

PNEUMONIA.

City Reports for Week Ended Mar. 31, 1917.

Place.	Cases.	Deaths.	Place.	Cases.	Deaths.
Allentown, Pa.....	1		Lorain, Ohio.....	1	
Baltimore, Md.....	16	30	Los Angeles, Cal.....	10	5
Berkeley, Cal.....	1		Newark, N. J.....	43	15
Binghamton, N. Y.....	10	5	New Castle, Pa.....	3	
Braddock, Pa.....	2		Pasadena, Cal.....	1	
Canton, Ohio.....	2	3	Philadelphia, Pa.....	144	69
Chicago, Ill.....	325	182	Pittsburgh, Pa.....	32	33
Cleveland, Ohio.....	44	59	Racine, Wis.....	1	1
Covington, Ky.....	1		Reading, Pa.....	8	10
Dayton, Ohio.....	1	2	Rochester, N. Y.....	10	4
Detroit, Mich.....	13	62	Saginaw, Mich.....	1	1
Duluth, Minn.....	2	4	Salt Lake City, Utah.....	2	2
Flint, Mich.....	4	1	San Diego, Cal.....	2	2
Grand Rapids, Mich.....	7	10	Sandusky, Ohio.....	10	2
Harrisburg, Pa.....	2		San Francisco, Cal.....	10	5
Kalamazoo, Mich.....	3	1	Schenectady, N. Y.....	6	4
Kansas City, Mo.....	9	24	Toledo, Ohio.....	3	5
Lancaster, Pa.....	2		Wilksburg, Pa.....	1	

POLIOMYELITIS (INFANTILE PARALYSIS).

State Reports for March, 1917.

Place.	New cases reported.	Place.	New cases reported.
Maryland:		Massachusetts—Continued.	
Baltimore County—		Suffolk County—	
Roland Park.....	1	Boston.....	2
Canton.....	1	Total.....	8
Total.....	2	Vermont:	
Massachusetts:		Washington County—	
Essex County—		Duxbury.....	1
Beverly.....	1	Waterbury.....	5
Middlesex County—		Total.....	6
Lowell.....	1	Wisconsin:	
Newton.....	1	Eau Claire County.....	1
Woburn.....	1		
Plymouth County—			
Bridgewater (town).....	1		
Whitman (town).....	1		

Arkansas Report for January, 1917.

During the month of January, 1917, two cases of poliomyelitis were notified in Logan County, Ark.

City Reports for Week Ended Mar. 31, 1917.

Place.	Cases.	Deaths.	Place.	Cases.	Deaths.
Chicago, Ill.....	1		Toledo, Ohio.....		1
Fort Wayne, Ind.....	1		Woburn, Mass.....		1
New York, N. Y.....	3				

RABIES IN ANIMALS.

City Report for Week Ended Mar. 31, 1917.

During the week ended March 31, 1917, two cases of rabies in animals were reported in Buffalo, N. Y.

SCARLET FEVER.

See Diphtheria, measles, scarlet fever, and tuberculosis, page 579.

SMALLPOX.**Connecticut.**

Collaborating Epidemiologist Black reported that during the two weeks ended April 14, 1917, new cases of smallpox were notified in Connecticut as follows: Bristol, 4; Hartford, 1; Naugatuck, 1; New London, 1; Newtown, 6; Southington, 3; Waterbury, 1.

Illinois—Cairo.

Acting Asst. Surg. Barrows reported that during the week ended April 7, 1917, 8 new cases of smallpox were notified in Cairo, Ill.

Minnesota.

Collaborating Epidemiologist Bracken reported that during the week ended April 14, 1917, three new foci of smallpox infection were reported in Minnesota, cases of the disease having been notified as follows: Chisago County, Franconia Township, 1; Redwood County, Granite Rock Township, 1; Swift County, De Graff, 1.

Oregon—Astoria.

Surg. Ebert reported that during the period of 14 days ended April 7, 1917, 28 cases of smallpox were notified in Astoria, Oreg.

State Reports for March, 1917.

Place.	New cases reported.	Deaths.	Vaccination history of cases.			
			Number vaccinated within 7 years preceding attack.	Number last vaccinated more than 7 years preceding attack.	Number never successfully vaccinated.	Vaccination history not obtained or uncertain.
Maryland:						
Baltimore City.....	7				7	
Massachusetts:						
Worcester County—						
Worcester.....	5			3	2	

SMALLPOX—Continued.

Miscellaneous State Reports.

Place.	Cases.	Deaths.	Place.	Cases.	Deaths.
Arkansas (Jan. 1-31):			Wisconsin (Mar. 1-31)—Con.		
Calhoun.....	5	Chippewa County.....	12
Clay.....	5	Columbia County.....	3
Dallas.....	1	Dane County.....	14
Garland.....	14	Douglas County.....	7
Greene.....	15	Dunn County.....	4
Hempstead.....	7	Eau Claire County.....	3
Jackson.....	7	Green County.....	1
Lawrence.....	10	Kenosha County.....	1
Mississippi.....	53	La Crosse County.....	5
Phillips.....	1	Lafayette County.....	1
Folk.....	12	Lincoln County.....	2
Frankie.....	3	Manitowoc County.....	1
Fulaski.....	4	Marathon County.....	2
St. Francis.....	7	Marquette County.....	10
White.....	12	Milwaukee County.....	5
Total.....	156	Monroe County.....	6
Oregon (Feb. 1-28):			Pierce County.....	3
Multnomah County—			Portage County.....	1
Portland.....	4	Price County.....	2
Vermont (Mar. 1-31):			Rock County.....	4
Washington County.....	1	Walworth County.....	2
Rutland County.....	1	Washburn County.....	1
Total.....	2	Washington County.....	5
Wisconsin (Mar. 1-31):			Waukesha County.....	1
Burnett County.....	3	1	Waupaca County.....	4
Calumet County.....	25	Wood County.....	2
			Total.....	130	1

City Reports for Week Ended Mar. 31, 1917.

Place.	Cases.	Deaths.	Place.	Cases.	Deaths.
Akron, Ohio.....	2	Marinette, Wis.....	2
Ann Arbor, Mich.....	2	Minneapolis, Minn.....	38
Austin, Tex.....	11	1	Muscatine, Iowa.....	2
Baltimore, Md.....	2	New Castle, Pa.....	1
Butte, Mont.....	3	New Orleans, La.....	15
Cleveland, Ohio.....	7	New York, N. Y.....	1
Covington, Ky.....	6	Oklahoma City, Okla.....	10
Danville, Ill.....	8	Omaha, Nebr.....	16
Davenport, Iowa.....	2	Rockford, Ill.....	1
Detroit, Mich.....	3	St. Joseph, Mo.....	17
Duluth, Minn.....	1	1	St. Louis, Mo.....	6
El Paso, Tex.....	1	St. Paul, Minn.....	3
Evansville, Ind.....	4	Salt Lake City, Utah.....	7
Flint, Mich.....	2	San Francisco, Cal.....	7	1
Fort Worth, Tex.....	1	Seattle, Wash.....	1
Galveston, Tex.....	2	Sioux City, Iowa.....	14
Grand Rapids, Mich.....	2	Springfield, Ill.....	5
Indianapolis, Ind.....	7	Toledo, Ohio.....	1
Kansas City, Mo.....	4	Topeka, Kans.....	4
La Crosse, Wis.....	1	Wichita, Kans.....	3
Lima, Ohio.....	2	Zanesville, Ohio.....	3
Little Rock, Ark.....	5			
Madison, Wis.....	10			

TETANUS.

City Reports for Week Ended Mar. 31, 1917.

Place.	Cases.	Deaths.	Place.	Cases.	Deaths.
El Paso, Tex.....	1	New York, N. Y.....	1	1
Newark, N. J.....	2	Quincy, Ill.....	1

TUBERCULOSIS.

See Diphtheria, measles, scarlet fever, and tuberculosis, page 579.

TYPHOID FEVER.

State Reports for March, 1917.

Place.	New cases reported.	Place.	New cases reported.
District of Columbia.....	9	Massachusetts—Continued.	
Maryland:		Hampden County—	
Baltimore City.....	30	Chicopee.....	1
Allegany County—		Holyoke.....	2
Cumberland.....	2	Ludlow (Town).....	1
Gilmore.....	1	Russell (Town).....	1
Western Maryland Hospital.....	1	Springfield.....	1
Anne Arundel County—		Middlesex County—	
Brooklyn.....	2	Cambridge.....	1
Revel Station.....	1	Concord (Town).....	1
Baltimore County—		Everett.....	1
Ellicott City.....	2	Lowell.....	6
Highlandtown.....	3	Malden (Town).....	1
Charles County—		Newton.....	4
Hughesville.....	1	Somerville.....	1
Cecil County—		Westford (Town).....	1
Chesapeake City.....	1	Norfolk County—	
Union Hospital.....	1	Wrentham (Town).....	1
Dorchester County—		Plymouth County—	
Ellhotts.....	1	Brockton.....	2
Frederick County—		Hanson (Town).....	2
Brunswick.....	1	Suffolk County—	
Walkersville (R. F. D.).....	3	Boston.....	7
Garrett County—		Worcester County—	
Friendsville.....	1	Ashburnham (Town).....	1
Harford County—		Fitchburg.....	1
Fallston.....	2	Gardner (Town).....	1
Howard County—		Westborough (Town).....	1
Ellicott City.....	13	Worcester.....	6
Pine Orchard.....	1	Total.....	69
Kent County—		Vermont:	
Chestertown.....	2	Addison County.....	4
Millington.....	1	Chittenden County.....	2
Prince George County—		Franklin County.....	11
Camp Springs (R. F. D.).....	1	Grand Isle County.....	1
Somerset County—		Washington County.....	1
Crisfield (R. F. D.).....	1	Windham County.....	1
Washington County—		Windsor County.....	1
Hancock.....	1	Total.....	21
Wicomico County—		Wisconsin:	
Wetipquin.....	1	Bayfield County.....	2
Total.....	74	Brown County.....	2
Massachusetts:		Buffalo County.....	1
Barnstable County—		Door County.....	12
Chatham (Town).....	1	Eau Claire County.....	4
Berkshire County—		Grant County.....	1
Great Barrington (Town).....	1	Juneau County.....	1
Bristol County—		Manitowoc County.....	3
Fall River.....	6	Milwaukee County.....	15
New Bedford.....	2	Price County.....	1
Essex County—		Racine County.....	1
Haverhill.....	1	Richland County.....	1
Lawrence.....	3	Rusk County.....	1
Lynn.....	4	Sheboygan County.....	6
Methuen (Town).....	1	Winnebago County.....	1
Newburyport.....	1	Total.....	52
Peabody (Town).....	1		
Rockport (Town).....	1		
Saugus (Town).....	2		
Franklin County—			
Greenfield (Town).....	1		

TYPHOID FEVER—Continued.

Oregon Report for February, 1917.

Place.	New cases reported.	Place.	New cases reported.
Oregon:		Oregon—Continued.	
Clackamas County.....	4	Multnomah County—	
Clatsop County.....	2	Portland.....	7
Columbia County.....	1	Umatilla County.....	1
Jackson County.....	1	Total.....	17
Lane County.....	1		

Arkansas Report for January, 1917.

Place.	New cases reported.	Place.	New cases reported.
Arkansas:		Arkansas—Continued.	
Cleveland County.....	2	Pope.....	4
Izard County.....	1	Sevier County.....	3
Mississippi County.....	4	Washington County.....	2
Newton County.....	1	Total.....	22
Perry County.....	1		
Polk.....	4		

City Reports for Week Ended Mar. 31, 1917.

Place.	Cases.	Deaths.	Place.	Cases.	Deaths.
Albany, N. Y.....	4		Milwaukee, Wis.....	5	
Baltimore, Md.....	6	1	Minneapolis, Minn.....	1	
Beaver Falls, Pa.....	3		Newark, N. J.....	1	
Binghamton, N. Y.....	1	1	New Bedford, Mass.....	1	
Birmingham, Ala.....	4		New Castle, Pa.....	1	
Boston, Mass.....	2		New Haven, Conn.....	2	1
Brockton, Mass.....	1		New London, Conn.....	1	1
Buffalo, N. Y.....	3		New Orleans, La.....	2	1
Canton, Ohio.....	1		New York, N. Y.....	10	5
Chicago, Ill.....	1		Norristown, Pa.....	1	
Chicopee, Mass.....	1		Perth Amboy, N. J.....	1	
Cincinnati, Ohio.....	3		Philadelphia, Pa.....	6	
Cleveland, Ohio.....	10	1	Pittsburgh, Pa.....	1	
Coffeyville, Kans.....	1		Reading, Pa.....	2	
Covington, Ky.....	2		Saginaw, Mich.....	1	
Detroit, Mich.....	7	2	St. Joseph, Mo.....		1
Fall River, Mass.....	2		St. Louis, Mo.....	2	
Galveston, Tex.....	1		Salt Lake City, Utah.....	1	
Grand Rapids, Mich.....		1	San Diego, Cal.....	1	
Indianapolis, Ind.....	6		San Francisco, Cal.....	3	1
Jackson, Mich.....	1		South Bend, Ind.....	4	
Kalamazoo, Mich.....	1		Springfield, Mass.....	1	
Kansas City, Kans.....	1		Syracuse, N. Y.....	1	
Kansas City, Mo.....	1	1	Toledo, Ohio.....	1	
Lawrence, Mass.....	1		Troy, N. Y.....	1	1
Los Angeles, Cal.....	4		Wilkesburg, Pa.....	1	
Lowell, Mass.....	1		Watertown, N. Y.....	2	
Lynn, Mass.....	1		Wilmington, Del.....	1	
Manchester, N. H.....	1		Zanesville, Ohio.....	10	

TYPHUS FEVER.

Texas.

Senior Surg. Pierce reported that during the two weeks ended April 7, 1907, one new case of typhus fever was notified at Laredo, Tex., making a total of 79 cases of the disease reported from points on the Mexican border since July 1, 1916.

During the 14-day period ended April 7, 1917, 134,345 persons were inspected at points along the Mexican border. Of this number 8,909 were disinfected for destruction of vermin and 3,366 were vaccinated. Thirty persons were refused admission because of illness.

PREVENTABLE DISEASES.

Massachusetts Report for Week Ended Mar. 31, 1917.

	Cases reported.		Cases reported.
Anthrax.....	1	Ophthalmia neonatorum.....	52
Cerebrospinal meningitis.....	7	Poliomyelitis (infantile paralysis).....	1
Chicken pox.....	190	Scarlet fever.....	184
Diphtheria.....	197	Septic sore throat.....	1
Dysentery.....	1	Trachoma.....	4
German measles.....	171	Tuberculosis (pulmonary).....	160
Malaria.....	1	Tuberculosis (other forms).....	9
Measles.....	696	Typhoid fever.....	13
Mumps.....	282	Whooping cough.....	72

DIPHTHERIA, MEASLES, SCARLET FEVER, AND TUBERCULOSIS.

State Reports for March, 1917.

Place.	Cases reported.			Place.	Cases reported.		
	Diphtheria.	Measles.	Scarlet fever.		Diphtheria.	Measles.	Scarlet fever.
District of Columbia.....	142	517	54	Massachusetts.....	859	2,857	721
Maryland.....	125	1,289	132	Vermont.....	32	2,224	100
				Wisconsin.....	236	632	1,329

State Reports for January and February, 1917.

During the month of January, 1917, 29 cases of diphtheria, 891 cases of measles, and 27 cases of scarlet fever were reported in Arkansas.

During the month of February, 1917, 3 cases of diphtheria, 1,175 cases of measles, and 111 cases of scarlet fever were reported in Oregon.

DIPHtherIA, MEASLES, SCARLET FEVER, AND TUBERCULOSIS—
Continued.

City Reports for Week Ended Mar. 31, 1917.

City.	Popula- tion as of July 1, 1916 (estimated by U. S. Census Bureau).	Total deaths from all causes.	Diphtheria.		Measles.		Scarlet fever.		Tuber- culosis.	
			Cases.	Deaths.	Cases.	Deaths.	Cases.	Deaths.	Cases.	Deaths.
Over 500,000 inhabitants:										
Baltimore, Md.....	589,621	278	14	123	1	14	37	40
Boston, Mass.....	756,476	277	82	1	172	1	56	3	63	36
Chicago, Ill.....	2,497,732	850	200	21	1,060	6	564	20	227	81
Cleveland, Ohio.....	674,073	256	33	7	156	1	15	42	23
Detroit, Mich.....	571,784	282	114	10	121	2	327	4	47	23
Los Angeles, Cal.....	503,812	141	5	1	350	1	17	61	18
New York, N. Y.....	5,602,841	1,668	290	30	1,051	9	216	3	397	193
Philadelphia, Pa.....	1,709,518	680	91	15	167	7	38	125	77
Pittsburgh, Pa.....	579,090	209	31	2	154	3	7	27	12
St. Louis, Mo.....	757,309	285	86	6	644	5	75	42	25
From 300,000 to 500,000 inhabit- ants:										
Buffalo, N. Y.....	468,558	222	24	3	15	19	2	29	22
Cincinnati, Ohio.....	410,476	156	17	1	55	1	10	33	24
Jersey City, N. J.....	306,345	79	11	1	15	27	29	12
Milwaukee, Wis.....	436,535	146	8	19	120	2	34	5
Minneapolis, Minn.....	368,454	29	14	21
Newark, N. J.....	408,894	128	24	92	23	46	20
New Orleans, La.....	371,747	10	2	43	1	31	32
San Francisco, Cal.....	463,516	125	21	144	1	30	37	19
Seattle, Wash.....	348,639	63	1	139	1	7	12
Washington, D. C.....	363,980	153	26	2	167	12	16	18
From 200,000 to 300,000 inhabit- ants:										
Columbus, Ohio.....	214,878	70	9	93	2	6	7	5
Indianapolis, Ind.....	271,708	4	591	13	12
Kansas City, Mo.....	297,847	7	1	234	1	89	1	2	8
Portland, Oreg.....	295,463	41	3	1	90	22	1
Providence, R. I.....	254,960	104	28	1	19	12	1	10
Rochester, N. Y.....	256,417	8	49	2	81	1	12	5
St. Paul, Minn.....	247,232	60	8	96	12	16	11
From 100,000 to 200,000 inhabit- ants:										
Albany, N. Y.....	104,190	3	30	7	9
Birmingham, Ala.....	181,762	58	2	220	6	1	12	6
Bridgeport, Conn.....	121,579	46	3	10	1	2	5	7
Cambridge, Mass.....	112,981	34	10	67	1	8	7	6
Camden, N. J.....	106,233	11	2	2	7
Dayton, Ohio.....	127,224	45	14	79	7	7	8
Fall River, Mass.....	128,366	37	7	2	46	2	2	4	4
Fort Worth, Tex.....	104,562	30	1	87	1	2	2
Grand Rapids, Mich.....	128,291	58	5	2	226	4	15	4	3
Hartford, Conn.....	110,900	6	7	7	3	2
Lawrence, Mass.....	100,560	21	2	1	1
Lowell, Mass.....	113,245	80	10	7	2	8	8
Lynn, Mass.....	102,425	23	4	4	10	3	4
Nashville, Tenn.....	117,057	37	64	1	8	2
New Bedford, Mass.....	118,158	48	18	2	10	6
New Haven, Conn.....	149,685	5	65	9	6
Omaha, Nebr.....	165,470	53	5	73	34	3
Reading, Pa.....	109,381	41	2	2	2	11	1
Richmond, Va.....	156,687	58	1	107	2	1	9	6
Salt Lake City, Utah.....	117,399	25	3	9	15	1	1
Springfield, Mass.....	105,942	34	12	20	8	5	3
Syracuse, N. Y.....	155,624	64	6	70	1	34	1	8
Tacoma, Wash.....	112,770	2	3	1	10
Toledo, Ohio.....	191,554	74	3	22	4	2	11	10
Trenton, N. J.....	111,593	42	10	4	18	12	5
Worcester, Mass.....	163,314	38	6	1	9	11	3
From 50,000 to 100,000 inhabit- ants:										
Akron, Ohio.....	85,625	16	102	3
Allentown, Pa.....	63,505	21	3	2
Atlantic City, N. J.....	57,660	8	41	11	2
Bayonne, N. J.....	69,893	4	5
Berkeley, Cal.....	57,653	15	38	2	4
Binghamton, N. Y.....	53,973	38	11	2	34	1	6	2	1
Brockton, Mass.....	67,449	15	2	2	1
Canton, Mass.....	60,852	13	1	3	3	1
Charleston, S. C.....	60,734	31	6	4
Covington, Ky.....	57,144	14	2	1	1	2	4

DIPHTHERIA, MEASLES, SCARLET FEVER, AND TUBERCULOSIS— Continued.

City Reports for Week Ended Mar. 31, 1917—Continued.

City.	Popula- tion as of July 1, 1916 (estimated by U. S. Census Bureau).	Total deaths from all causes.	Diphtheria.		Measles.		Scarlet fever.		Tuber- culosis.	
			Cases.	Deaths.	Cases.	Deaths.	Cases.	Deaths.	Cases.	Deaths.
From 50,000 to 100,000 inhabit- ants—Continued.										
Duluth, Minn.	94,495	9	1		9		7		1	2
Elizabeth, N. J.	86,690		9		5		10		5	2
El Paso, Tex.	63,705	55	1	1	24	3	1			18
Evansville, Ind.	76,078	27	1		149	4			3	4
Flint, Mich.	54,772	18	3		25		46	1		
Fort Wayne, Ind.	76,183	21	1						1	1
Harrisburg, Pa.	72,015	27	2		4				6	
Hoboken, N. J.	77,214	22	3		5		5		9	4
Johnstown, Pa.	68,529	34			13		8			7
Kansas City, Kans.	99,437		2		17		22			
Lancaster, Pa.	50,853		3		14		1		3	
Little Rock, Ark.	57,343	13			48		1			
Malden, Mass.	51,155	16	6		11		1			
Manchester, N. H.	78,283	22	1		4		2			
Mobile, Ala.	58,221	28			22	1	1		4	5
New Britain, Conn.	53,794		2						6	1
Norfolk, Va.	89,612				34		2			3
Oklahoma City, Okla.	92,943	21	1		28		1			2
Pasaic, N. J.	71,744	15	5						2	
Pawtucket, R. I.	59,411	14	3		1					1
Portland, Me.	63,867	19	1		1					
Rockford, Ill.	55,185	18			5		3			2
Sacramento, Cal.	66,895	25	1		8	2			5	5
Saginaw, Mich.	55,642	18					13		1	
St. Joseph, Mo.	85,236	33	5				4		1	2
San Diego, Cal.	53,330	23	1		41		1		20	4
Schenectady, N. Y.	99,519	21	2		115		2		2	2
Sioux City, Iowa.	57,078						8			
Somerville, Mass.	87,039	30	6	1	3		3		3	3
South Bend, Ind.	68,946	23			2		6			3
Springfield, Ill.	61,120	8	2		7					2
Troy, N. Y.	77,916		2		50		11		5	3
Wichita, Kans.	70,722				151		2			
Wilkes-Barre, Pa.	76,776	25	1		4		1		7	1
Wilmington, Del.	94,265	48	1	1			5			
From 25,000 to 50,000 inhabitants:										
Alameda, Cal.	27,732	4			5		3		1	
Auburn, N. Y.	37,385	10	1				1			1
Austin, Tex.	34,814	7	2		5		1			1
Brookline, Mass.	32,730	6	3		2		1		1	
Butler, Pa.	27,632	8	3		1		1		1	1
Butte, Mont.	43,425	31	2		31					1
Chelsea, Mass.	46,192	14	4		3		3		4	1
Chicopee, Mass.	29,319	8	2		2		1		3	1
Cumberland, Md.	26,074	9	2		6				2	3
Danville, Ill.	32,261	6			12		2			
Davenport, Iowa.	48,811						1			
Dubuque, Iowa.	39,873				3		6		2	2
East Chicago, Ind.	28,743		1		16					
East Orange, N. J.	42,458	10	2		8		2		1	
Elgin, Ill.	28,203	10			38		1			
Everett, Mass.	39,233	11	9		11		2		2	1
Everett, Wash.	35,486	8			24					1
Fitchburg, Mass.	41,781	10	3		2				1	
Galveston, Tex.	41,863	11	1		8				1	3
Haverhill, Mass.	48,477		22	1			5		4	4
Jackson, Mich.	35,363	16	2		31		5		1	1
Kalamazoo, Mich.	48,886	21	3				5		6	3
Kenosha, Wis.	31,576	4	1		18		1		1	
Kingston, N. Y.	26,771	8			1					1
Knoxville, Tenn.	38,676								3	
La Crosse, Wis.	31,677	5	1				4		2	
Lexington, Ky.	41,097	14			16		1			2
Lima, Ohio.	35,384	6	3		4		3			1
Lincoln, Nebr.	46,515	21	1		96		23		1	
Long Beach, Cal.	27,587	8					2		1	
Lorsain, Ohio.	36,964		2		2		2			
Lynchburg, Va.	32,940	6			7				3	
Madison, Wis.	30,699						22		2	
Medford, Mass.	26,234	5	2		14		2			

DIPHThERIA, MEASLES, SCARLET FEVER, AND TUBERCULOSIS—
Continued.

City Reports for Week Ended Mar. 31, 1917—Continued.

City.	Popula- tion as of July 1, 1916 (estimated by U. S. Census Bureau).	Total deaths from all causes.	Diphtheria.		Measles.		Scarlet fever.		Tuber- culosis.	
			Cases.	Deaths.	Cases.	Deaths.	Cases.	Deaths.	Cases.	Deaths.
From 25,000 to 50,000 inhabit- ants—Continued.										
Montclair, N. J.	26,318	6			1		1		3	
Newburgh, N. Y.	29,603	19					1		1	5
New Castle, Pa.	41,133				7					
Newport, Ky.	31,927	8					1		1	1
Newport, R. I.	30,108	9								
Newton, Mass.	43,715	11			42		1			
Niagara Falls, N. Y.	37,353	18			26		2		3	
Norristown, Pa.	31,401	14								3
Ogden, Utah.	31,404	11			5		5		1	1
Orange, N. J.	33,080	12	2		3				1	3
Pasadena, Cal.	46,450	9			12					
Perth Amboy, N. J.	41,185		2		1				2	
Pittsfield, Mass.	38,629	17			1		6			
Portsmouth, Va.	39,651	13			22		6			1
Quincy, Ill.	36,798	9	1		15		1			1
Quincy, Mass.	38,136	11					2		3	2
Racine, Wis.	46,486	18					1		3	2
Roanoke, Va.	43,284	14	1		85		2		3	4
San Jose, Cal.	38,902				11		3		1	
Steubenville, Ohio.	27,445	8					1			
Superior, Wis.	46,226	7	1		1		2			
Taunton, Mass.	36,283	13			2		3		1	
Topeka, Kans.	48,726	7			77		4			1
Waltham, Mass.	30,570	12	4	1						
Watertown, N. Y.	29,894	12			8					
West Hoboken, N. J.	43,139		2		5		2		1	
Wheeling, W. Va.	43,377	21			5				1	3
Williamsport, Pa.	33,809		1		39		1			
Wilmington, N. C.	29,892	9			22					1
Winston-Salem, N. C.	31,155	17			13		1		5	1
Zanesville, Ohio.	30,863	15					2			
From 10,000 to 25,000 inhabitants:										
Ann Arbor, Mich.	15,010	15	1		13		17		1	
Beaver Falls, Pa.	13,532				1					
Braddock, Pa.	21,685		2							
Cairo, Ill.	15,794	6			35					3
Clinton, Mass.	13,075	6			12		1		1	1
Coffeyville, Kans.	17,548				7					1
Concord, N. H.	22,669	5	2		2		1			
Galesburg, Ill.	24,276	6	4		4					
Harrison, N. J.	16,950		1		3		3		2	
Kearny, N. J.	23,539	9	1		1		3		2	2
Kokomo, Ind.	20,930	8			5				2	1
Long Branch, N. J.	15,395	5			12					
Marinette, Wis.	14,610	3					1		1	
Melrose, Mass.	17,445	5			4					1
Morristown, N. J.	13,284	3					1		2	1
Muscatine, Iowa.	17,500				3					
Nanticoke, Pa.	23,126	7	2							
Newburyport, Mass.	15,248	4			23				3	
New London, Conn.	20,985	5			1					
North Adams, Mass.	22,019	5			1		1		1	
Northampton, Mass.	19,928				11	1			1	1
Plainfield, N. J.	23,805	10			2		3		3	
Portsmouth, N. H.	11,666						1			
Rocky Mount, N. C.	12,067	4			4					
Rutland, Vt.	14,831	3	1		1		3			
Sandusky, Ohio.	20,193	21			3				2	1
Saratoga Springs, N. Y.	13,821	6			7		3			
Steelton, Pa.	15,548	6								
Wilksburg, Pa.	23,228	12					1		2	
Woburn, Mass.	15,969									1

¹ Population Apr. 15, 1910; no estimate made.

FOREIGN.

CHILE.

Plague—Antofagasta—Tacna.

The occurrence of two cases of plague at Antofagasta and one case at Tacna, Chile, was reported March 12, 1917.

CUBA.

Communicable Diseases—Habana.

Communicable diseases have been notified at Habana as follows:

Disease.	Mar. 11-20, 1917.		Remain- ing under treat- ment Mar. 20, 1917.
	New cases.	Deaths.	
Diphtheria.....	3		6
Leprosy.....		1	9
Malaria.....	18		18
Measles.....	29		33
Paratyphoid fever.....	1		5
Scarlet fever.....	1		2
Smallpox.....			1
Typhoid fever.....	10	2	33
Varicella.....	5		7

GREAT BRITAIN.

Further Relative to Anthrax—Longwood.

A case of anthrax was reported¹ March 8, 1917,¹ at Longwood, near Huddersfield, England, in the person of an employee in a woolen mill. On March 15 another case was reported as occurring in an employee of the same mill.

Anthrax—Todmorden, Yorkshire.

Two cases of anthrax have been recently reported at Todmorden, Yorkshire, among employees engaged in handling hides. The hides used were imported from Batavia, Java.

¹ Public Health Reports, Apr. 13, 1917, p. 553.

Plague-Infected Rats—Hull.

Two plague-infected rats were found at Hull, England, during the week ended March 17, 1917. The rats were found dead in the hold of the steamship *Venetia* which left Bombay January 20, arriving at Hull, via Portland, England, March 9, 1917.

MAURITIUS.**Plague.**

A recurrence of plague was reported December 9, 1916, in the island of Mauritius, with a total to February 3, 1917, of 20 cases with 11 deaths. The infected localities are in the district of Port Louis. The last previously reported cases of plague in Mauritius occurred in June, 1916.

RUSSIA.**Typhus Fever—Poland.**

During the period from October 1 to December 2, 1916, 1,538 cases of typhus fever were reported in Poland. Of these, 611 cases occurred at Warsaw and 201 cases at Lodz.

CHOLERA, PLAGUE, SMALLPOX, TYPHUS FEVER, AND YELLOW FEVER.**Reports Received During the Week Ended Apr. 20, 1917.¹****CHOLERA.**

Place.	Date.	Cases.	Deaths.	Remarks.
China:				
Macao.....				Outbreak with 72 cases reported Mar. 1, 1917.
India:				
Bassein.....	Jan. 21-Feb. 3.....		13	
Bombay.....	Feb. 4-10.....	1	1	
Calcutta.....	do.....		9	
Madras.....	do.....	1		
Moulmein.....	Jan. 21-Feb. 3.....		2	
Rangoon.....	Jan. 28-Feb. 10.....	4	3	
Indo-China:				
Provinces.....				Dec. 1-31, 1916: Cases, 77; deaths, 44.
Anam.....	Dec. 1-31.....	27	15	
Cambodia.....	do.....	24	17	
Cochin-China.....	do.....	25	12	
Tonkin.....	do.....	1		
Persia:				
Enzeli.....	Mar. 21-Sept. 9.....	74	37	
Kazvin.....	July 18-Sept. 19.....	107	65	
Recht.....	Mar. 21-Oct. 14.....	165	60	
Teheran.....	Aug. 3-Oct. 18.....	428	409	At 2 localities in vicinity: Cases, 64; deaths, 38.
Straits Settlements:				
Singapore.....	Feb. 11-17.....	1	1	

¹ From medical officers of the Public Health Service, American consuls, and other sources.

CHOLERA, PLAGUE, SMALLPOX, TYPHUS FEVER, AND YELLOW FEVER—Continued.

Reports Received During the Week Ended Apr. 20, 1917—Continued.

PLAGUE.

Place.	Date.	Cases.	Deaths.	Remarks.
Chile:				
Antofagasta.....	Mar. 12.....	2		
Tacna.....	do.....	1		
India:				
Bassein.....	Jan. 21-Feb. 3.....		12	Jan. 28-Feb. 3, 1917: Cases, 18,726; deaths, 14,776.
Bombay.....	Jan. 28-Feb. 10.....	28	25	
Karachi.....	Feb. 11-17.....	5	3	
Madras.....	Feb. 4-10.....	1	1	
Madras Presidency.....	do.....	623	383	
Prome.....	Jan. 21-Feb. 3.....		37	
Rangoon.....	Jan. 28-Feb. 10.....	57	52	
Toungoo.....	Jan. 21-Feb. 3.....		11	
Indo-China:				
Provinces.....				
Anam.....	Dec. 1-31.....	5	2	Dec. 1-31, 1916: Cases, 15; deaths, 12.
Cambodia.....	do.....	10	10	
Japan:				
Taiwan Island—				
Tansui.....	Feb. 15-21.....	3	3	
Mauritius.....	Dec. 9-Feb. 3.....	20	11	District of Port Louis.
Siam:				
Bangkok.....	Feb. 4-17.....	8	6	
Straits Settlements:				
Penang.....	Jan. 28-Feb. 3.....	2	1	
Singapore.....	Feb. 11-24.....	2	2	

SMALLPOX.

Australia:				
Queensland—				
Thursday Island, quarantine station.....	Feb. 8.....	1		On steamship St. Albans from Kobe via Hongkong. Vessel proceeded in quarantine to Townsville, Brisbane, and Sydney, arriving Feb. 16. Released Feb. 23.
Austria-Hungary:				
Austria—				
Prague.....	Jan. 21-27.....	1		
Vienna.....	Feb. 11-17.....	1		
Hungary—				
Budapest.....	Jan. 28-Feb. 24.....	29	5	
Brazil:				
Rio de Janeiro.....	Feb. 25-Mar. 10.....	15	6	
Canada:				
Manitoba—				
Winnipeg.....	Mar. 25-31.....	2		
China:				
Amoy.....	Feb. 11-17.....			Present.
Dairen.....	Feb. 18-Mar. 3.....	7	1	
Hongkong.....	Feb. 25-Mar. 10.....	31	22	
Egypt:				
Alexandria.....	Feb. 12-Mar. 4.....	3	2	
Greece:				
Athens.....	Feb. 27-Mar. 5.....		1	
India:				
Bombay.....	Jan. 28-Feb. 10.....	10	7	
Madras.....	Feb. 4-17.....	50	6	
Rangoon.....	Jan. 28-Feb. 10.....	15	1	
Indo-China:				
Provinces.....				
Anam.....	Dec. 1-31.....	21	1	Dec. 1-31, 1916: Cases, 236; deaths, 63.
Cambodia.....	do.....	8	2	
Cochin-China.....	do.....	152	40	
Tonkin.....	do.....	55	20	
Italy:				
Turin.....	Feb. 26-Mar. 4.....	3	1	Roumanian refugees.
Mexico:				
Monterey.....	Mar. 12-25.....		2	
Russia:				
Archangel.....	Jan. 15-28.....	15	3	
Moscow.....	Dec. 25-31.....	44	26	
Petrograd.....	Dec. 31-Jan. 13.....	31	9	

CHOLERA, PLAGUE, SMALLPOX, TYPHUS FEVER, AND YELLOW FEVER—Continued.

Reports Received During the Week Ended Apr. 20, 1917—Continued.

SMALLPOX—Continued.

Place.	Date.	Cases.	Deaths.	Remarks.
Russia—Continued.				
Poland.....				Oct. 1-Dec. 2, 1916: Cases, 38.
Warsaw.....	Oct. 1-Dec. 2.....	25		
Siberia—				
Vladivostok.....	Jan. 29-Feb. 4.....	7	2	
Spain:				
Valencia.....	Feb. 25-Mar. 3.....	1		
Straits Settlements:				
Penang.....	Jan. 28-Feb. 17.....	8	1	
Singapore.....	Feb. 11-17.....	1		
Switzerland:				
Basel.....	Feb. 25-Mar. 3.....	7		
Tunisia:				
Tunis.....	Feb. 24-Mar. 2.....	2	2	

TYPHUS FEVER.

Austria-Hungary:				
Austria—				
Prague.....	Jan. 28-Feb. 24.....	4		
Vienna.....	Jan. 2-Mar. 3.....	31		
Hungary—				
Budapest.....	Jan. 28-Feb. 24.....	10		
Egypt:				
Alexandria.....	Feb. 12-Mar. 4.....	142	28	
Germany:				
Marienwerder district.....	Dec. 3-9.....	1		Prison camp.
Neidenburg.....	Oct. 29-Nov. 18.....	7		
Great Britain:				
Belfast.....	Mar. 11-17.....	10		
Greece:				
Saloniki.....	Jan. 14-Feb. 17.....		13	
Russia:				
Archangel.....	Jan. 15-28.....	15	4	
Moscow.....	Dec. 25-31.....	35	4	
Petrograd.....	Dec. 31-Jan. 13.....	8	1	
Poland.....				Oct. 1-Dec. 2, 1916: Cases, 1,538; deaths, 119. In invaded regions.
Lodz.....	Oct. 1-Dec. 2.....	201	20	
Warsaw.....	do.....	611	36	
Siberia—				
Vladivostok.....	Jan. 28-Feb. 4.....	1		
Turkey in Asia.....				Feb. 7, 1917: 54 cases reported in Army of the Orient.

Reports Received from Dec. 30, 1916, to Apr. 13, 1917.

CHOLERA.

Place.	Date.	Cases.	Deaths.	Remarks.
Chosen (Korea).....	Aug.-Dec. 29.....	1,998		
India:				
Bassein.....	Dec. 31-Jan. 6.....		1	
Bombay.....	Nov. 5-Dec. 23.....	13	12	
Do.....	Jan. 14-Feb. 3.....	6	5	
Calcutta.....	Oct. 15-Dec. 30.....		161	Oct. 8-14, 1916: Cases, 3.
Do.....	Dec. 31-Jan. 20.....		49	
Madras.....	Nov. 5-Dec. 16.....	5		
Do.....	Dec. 31-Jan. 27.....	5	4	Dec. 17-23, 1916: One case.
Moulmein.....	Dec. 31-Jan. 6.....		1	
Rangoon.....	Nov. 26-Dec. 30.....	5	6	
Do.....	Dec. 31-Jan. 27.....	4	4	
Indo-China.....				Apr. 1-June 30, 1916: Cases, 4,540; deaths, 2,869.
Do.....				
Provinces—				
Anam.....	Apr. 1-June 30.....	1,381	2,309	
Do.....	July 1-Nov. 30.....	673	529	
Cambodia.....	May 1-June 30.....	47	13	
Do.....	July 1-Nov. 30.....	140	99	

CHOLERA, PLAGUE, SMALLPOX, TYPHUS FEVER, AND YELLOW FEVER—Continued.

Reports Received from Dec. 30, 1916, to Apr. 13, 1917—Continued.

CHOLERA—Continued.

Place.	Date.	Cases.	Deaths.	Remarks.
Indo-China—Continued.				
Provinces—Continued.				
Cochin-China	Apr. 1-June 30	269	111	
Do.	July 1-Sept. 30	96	59	
Kwang-Tcheou-Wan	July 1-Nov. 30	271	264	
Laos	Apr. 1-June 30	102	57	
Do.	July 1-Nov. 30	652	630	
Tonkin	Apr. 1-June 30	2,780	1,385	
Do.	July 1-Nov. 30	998	725	
Saigon	Dec. 25-31	4	3	
Do.	Jan. 29-Feb. 4	3	3	
Japan:				
Fukuoka	Jan. 19	33	
Nagasaki	Nov. 27-Dec. 3	9	4	
Do.	Feb. 19-25	1	1	
Osaka	Nov. 16-Dec. 25	23	57	Aug. 13-Dec. 25, 1916: Cases, 971; deaths, 754.
Do.	Dec. 26-Jan. 25	19	10	Jan. 6-16, 1917: Cases, 9. Aug. 14, 1916-Jan. 25, 1917: Cases, 990; deaths, 641.
Taiwan Island—				
Keelung	Nov. 13-Dec. 23	5	7	
Do.	Feb. 18-24	1	1	
Taihoku	do.	14	5	
Tokyo	Jan. 23-Feb. 4	4	
Yokohama	Nov. 6-Dec. 3	5	3	
Districts	do.	1	1	
Java:				
East Java	Oct. 14-17	5	3	
West Java	
Batavia	Nov. 17-Dec. 7	23	9	Nov. 17-Dec. 14, 1916: Cases, 135; deaths, 65.
Persia:				
Mazanderan Province—				
Amol	Nov. 16	Epidemic.
Ferikena	Nov. 30	8	8	
Philippine Islands:				
Manila				
Do.	Oct. 29-Dec. 30	201	70	Not previously reported: Cases, 54; deaths, 2.
Do.	Dec. 31-Feb. 17	13	7	Oct. 29-Dec. 9, 1916: Cases, 4,191; deaths, 2,030. Dec. 17-30, 1916: Cases, 282; deaths, 188. Dec. 31, 1916-Feb. 10, 1917: Cases, 933; deaths, 707.
Provinces				
Albay	Oct. 29-Dec. 9	246	147	
Do.	Dec. 17-30	20	10	
Do.	Dec. 31-Feb. 17	56	42	
Antique	Nov. 18-25	8	7	
Do.	Dec. 31-Feb. 17	47	46	
Bataan	Oct. 29-Dec. 9	93	77	
Do.	Dec. 17-23	2	2	
Do.	Dec. 31-Jan. 6	2	3	
Batangas	Oct. 29-Nov. 18	1	1	
Bohol	Oct. 29-Dec. 9	46	18	
Do.	Dec. 17-23	1	
Bulacan	Oct. 29-Dec. 9	96	67	
Do.	Dec. 17-23	10	6	
Camarines	Oct. 29-Dec. 9	61	37	
Capiz	do.	45	34	
Do.	Dec. 17-30	27	23	
Do.	Dec. 31-Feb. 17	125	98	
Cavite	Oct. 29-Dec. 9	156	113	
Do.	Dec. 17-30	24	13	
Do.	Dec. 31-Feb. 10	45	33	
Cebu	Dec. 24-30	12	6	
Do.	Jan. 7-Feb. 17	71	52	
Iloilo	Oct. 29-Dec. 9	237	148	
Do.	Dec. 17-30	37	31	
Do.	Dec. 31-Feb. 10	51	41	
Laguna	Nov. 2-25	12	10	
Leyte	Oct. 29-Dec. 9	127	98	
Do.	Dec. 17-30	90	62	
Do.	Dec. 31-Feb. 17	338	271	
Masbate	Dec. 17-23	8	2	
Mindanao	Jan. 14-Feb. 3	25	18	
Mindoro	Dec. 31-Feb. 3	8	7	
Misamis	Oct. 29-Dec. 9	128	79	
Do.	Dec. 17-30	17	12	
Do.	Dec. 31-Feb. 17	3	27	
Negros Occidental	Oct. 29-Dec. 9	910	553	
Do.	Dec. 24-30	11	3	
Do.	Jan. 7-Feb. 10	51	46	

CHOLERA, PLAGUE, SMALLPOX, TYPHUS FEVER, AND YELLOW FEVER—Continued.

Reports Received from Dec. 30, 1916, to Apr. 13, 1917—Continued.

CHOLERA—Continued.

Place.	Date.	Cases.	Deaths.	Remarks.
Philippine Islands—Contd.				
Provinces—Continued.				
Pampanga.....	Dec. 3-9.....	4	3	
Do.....	Dec. 17-23.....	6	5	
Do.....	Dec. 31-Jan. 6.....	1	1	
Rizal.....	Oct. 29-Dec. 9.....	27	14	
Do.....	Dec. 17-30.....	4	
Do.....	Dec. 31-Jan. 27.....	2	
Romblon.....	Jan. 28-Feb. 3.....	9	2	
Samar.....	Nov. 5-18.....	13	10	
Do.....	Dec. 31-Feb. 3.....	165	123	
Sorsogon.....	Oct. 29-Dec. 2.....	131	71	
Do.....	Dec. 17-23.....	1	2	
Do.....	Jan. 21-Feb. 17.....	92	53	
Tayabas.....	Nov. 5-18.....	1	1	
Zambales.....	Oct. 29-Dec. 2.....	7	1	
Straits Settlements:				
Singapore.....	Oct. 22-28.....	2	2	
Do.....	Jan. 7-13.....	1	1	
Turkey in Asia.....				
Aleppo.....	Dec. 9-15.....	1	Sept. 22-Dec. 12, 1916: Cases, 258;
Bagdad.....	Nov. 6-30.....	17	6	deaths, 117. July 14-Dec. 25,
Beirut.....	Dec. 7-12.....	2	1	1916: Cases, 9,542; deaths, 4,897.
Tarsus.....	Nov. 7.....	1	1	
Turkey in Europe:				
Constantinople.....	Oct. 1-Nov. 17.....	8	1	

PLAGUE.

Brazil:				
Bahia.....	Nov. 5-Dec. 16.....	15	9	Jan. 1-Nov. 11, 1916: Cases, 14;
Do.....	Jan. 7-Feb. 24.....	4	3	deaths, 7. Nov. 5-11: Cases, 4;
Joazeiro.....				
Pernambuco, State.....				
Jan. 16-Feb. 16.....				
Present in interior cities.				
Ceylon:				
Colombo.....	Oct. 28-Dec. 30.....	50	30	July 23-29, 1916: Cases, 9;
Do.....	Dec. 31-Jan. 27.....	18	16	deaths, 8.
Chile:				
Tocopilla.....	Sept. 12.....	1	1	
China:				
Amoy, vicinity.....	Nov. 19-Dec. 2.....	Present.
Chaochowfu.....	Feb. 24.....	Present. 26 miles from Swatow.
Hongkong.....	Dec. 24-30.....	1	1	
Do.....	Jan. 21-Feb. 3.....	24	12	Present in vicinity.
Kansu Province—				
Taochow.....				
Oct. 1-24.....				
20 Pneumonic. Reported present.				
in other localities in Province.				
Sept. 1-Dec. 31, 1916: Cases, 353;				
deaths, 119.				
Jan. 1-31, 1917: Cases, 106; deaths,				
43.				
Ecuador:				
Duran.....	Oct. 1-Dec. 31.....	2	
Guayaquil.....	Sept. 1-Dec. 31.....	347	116	
Do.....	Jan. 1-31.....	104	43	
Milagro.....	Nov. 1-Dec. 31.....	2	1	
Naranjal.....	Jan. 1-31.....	1	
Nobol.....	Oct. 1-31.....	1	1	
Santa Rosa.....	Sept. 1-30.....	1	1	
Taura.....	Jan. 1-31.....	1	
Egypt.....				
Jan. 1-Dec. 30, 1916: Cases, 1,702;				
deaths, 828. Jan. 1-Feb. 16,				
1917: Cases, 14; deaths, 6.				
1 case on s. s. Proton, arrived				
Nov. 16, 1916, from Sidi Barani				
and Sollum.				
Alexandria.....	Nov. 12-Dec. 25.....	4	3	
Do.....	Feb. 21.....	1	
Port Said.....	Dec. 11.....	1	
Do.....	Jan. 18-Feb. 20.....	5	1	
Provinces—				
Beni-Souef.....	Feb. 1.....	1	
Fayoum.....	Jan. 24-Feb. 16.....	2	1	
Minieh.....	Jan. 25-Feb. 9.....	2	2	
Gold Coast:				
Akra.....	Apr. 4.....	Present.
Hawaii:				
Pauilo.....	Mar. 7.....	1	1	

CHOLERA, PLAGUE, SMALLPOX, TYPHUS FEVER, AND YELLOW FEVER—Continued.

Reports Received from Dec. 30, 1916, to Apr. 13, 1917—Continued.

PLAGUE—Continued.

Place.	Date.	Cases.	Deaths.	Remarks.
India				
Bassein	Oct. 22-Dec. 30		7	Oct. 15-Dec. 23, 1916: Cases, 89,512; deaths, 67,068. Dec. 31, 1916-Jan. 13, 1917: Cases, 30,487; deaths, 23,538. Jan. 14-27, 1917: Cases, 50,422; deaths, 40,153.
Do.	Dec. 31-Jan. 13		8	
Bombay	Nov. 5-Dec. 30	73	59	Oct. 8-14, 1916: Cases, 13; deaths, 7. Received out of date. Original report lost on s. s. Arabia.
Do.	Dec. 31-Feb. 3	58	52	
Karachi	Oct. 29-Dec. 23	3	2	Oct. 8-14, 1916: Cases, 1; deaths, 1.
Do.	Dec. 24-30	1	1	
Do.	Dec. 31-Feb. 3	3	2	Oct. 8-14, 1916: Cases, 1; deaths, 1.
Madras	Nov. 19-Dec. 30	7	5	
Do.	Dec. 31-Feb. 3	5	3	Oct. 8-14, 1916: Cases, 534; deaths, 353. Sept. 17-23, 1916: Cases, 429; deaths, 290.
Madras Presidency	Nov. 5-Dec. 30	5,854	3,932	
Do.	Dec. 31-Feb. 3	3,705	2,485	Oct. 8-14, 1916: Cases, 1; deaths, 1.
Mandalay	Oct. 28-Dec. 30		3	
Moulmein	Dec. 3-9		1	Oct. 1-7, 1916: Cases, 9; deaths, 9.
Prome	Oct. 22-Dec. 30		177	
Do.	Dec. 31-Jan. 13		49	Oct. 1-7, 1916: Cases, 9; deaths, 9.
Rangoon	Oct. 28-Dec. 30	43	39	
Do.	Dec. 31-Jan. 27	70	65	Apr. 1-June 30, 1916: Cases, 325; deaths, 148. July 1-Nov. 30, 1916: cases, 215; deaths, 130.
Toungoo	Oct. 22-Dec. 30		12	
Do.	Dec. 31-Jan. 13		4	
Indo-China				
Provinces—				
Anam	Apr. 1-June 30	142	83	Apr. 1-June 30, 1916: Cases, 325; deaths, 148. July 1-Nov. 30, 1916: cases, 215; deaths, 130.
Do.	July 1-Nov. 30	70	47	
Cambodia	Apr. 1-June 30	43	41	Three miles from Taihoku.
Do.	July 1-Nov. 30	47	44	
Cochin-China	Apr. 1-June 30	135	63	Aug. 26-Dec. 31, 1916: Cases, 133; deaths, 116.
Do.	July 1-Nov. 30	58	22	
Kwang-Teheou-Wan	do.	29	8	Aug. 26-Dec. 31, 1916: Cases, 133; deaths, 116.
Tonkin	Oct. 1-31	2	2	
Saigon	Nov. 6-Dec. 17	9	3	Aug. 26-Dec. 31, 1916: Cases, 133; deaths, 116.
Do.	Jan. 1-Feb. 4	10	7	
Japan:				
Nagoya	Dec. 10-16	2		Three miles from Taihoku.
Taiwan Island—				
Shirin	Feb. 18-24	1	1	Aug. 26-Dec. 31, 1916: Cases, 133; deaths, 116.
Yokkaichi	Nov. 12-Dec. 16	32	12	
Java:				
East Java				
Djoejakarta Residency	Nov. 4-Dec. 31	2	2	Aug. 26-Dec. 31, 1916: Cases, 133; deaths, 116.
Kediri Residency	Aug. 26-Dec. 31	20	18	
Madioen Residency	do.	8	8	Aug. 26-Dec. 31, 1916: Cases, 133; deaths, 116.
Paseroean Residency	do.	3	3	
Samarang Residency	Dec. 2-31	6	6	Aug. 26-Dec. 31, 1916: Cases, 133; deaths, 116.
Surabaya Residency	Aug. 26-Dec. 31	49	49	
Surakarta Residency	do.	28	28	Aug. 26-Dec. 31, 1916: Cases, 133; deaths, 116.
Mid-Java—				
Samarang	do.	1	1	
Slam:				
Bangkok	Oct. 22-Dec. 30	12	10	Aug. 26-Dec. 31, 1916: Cases, 133; deaths, 116.
Do.	Jan. 14-20	1	1	
Straits Settlements:				
Singapore	Oct. 22-Dec. 30	7	7	Aug. 26-Dec. 31, 1916: Cases, 133; deaths, 116.
Do.	Dec. 31-Feb. 3	7	6	
Union of South Africa:				
Cape of Good Hope State—				
Uitenhage district	Oct. 31-Nov. 12	2	2	Total, Oct. 23-Nov. 12, 1916: Cases, 24; deaths, 13.
Orange Free State—				
Winburg district	Feb. 5-11	6	2	On a farm.
Transvaal—				
Potchefstroom district	Dec. 21-Jan. 21	12	12	On two adjoining farms.

SMALLPOX.

Australia:				
New South Wales—				
Coonamble	Dec. 8	1		
Austria-Hungary:				
Austria—				
Vienna	Nov. 12-Dec. 9	8	1	
Hungary—				
Budapest	Nov. 5-Dec. 23	73	2	
Do.	Dec. 31-Jan. 20	18	3	

CHOLERA, PLAGUE, SMALLPOX, TYPHUS FEVER, AND YELLOW FEVER—Continued.

Reports Received from Dec. 30, 1916, to Apr. 13, 1917—Continued.

SMALLPOX—Continued.

Place.	Date.	Cases.	Deaths.	Remarks.
Brazil:				
Bahia.....	Nov. 12-Dec. 23.....	5		
Do.....	Jan. 7-Mar. 3.....	8		
Rio de Janeiro.....	Nov. 12-Dec. 30.....	50	12	
Do.....	Dec. 31-Feb. 21.....	91	26	
Canada:				
Alberta—				
Lethbridge.....	Feb. 1-28.....	2		
British Columbia—				
Vancouver.....	Feb. 13-24.....	1		
Victoria.....	Feb. 11-17.....	1		
Manitoba—				
Winnipeg.....do.....	3		
Ontario—				
Kingston.....	Mar. 11-17.....	1		
Sarnia.....	Jan. 28-Feb. 10.....	3		
Toronto.....	Jan. 28-Mar. 31.....	6		
Ceylon:				
Colombo.....	Dec. 31-Jan. 6.....	1		
China:				
Amoy.....	Oct. 31-Dec. 9.....			Present. Dec. 10-16, 1916: Cases, 3.
Antung.....	Jan. 8-14.....	2	1	
Canton.....	Nov. 1-Dec. 20.....		14	
Chungking.....	Oct. 28-Dec. 30.....			Present.
Do.....	Dec. 31-Feb. 17.....			Do.
Dairen.....	Nov. 5-Dec. 30.....	63	8	
Do.....	Dec. 31-Feb. 17.....	39	16	In vicinity, Jan. 14-20, 1917, 1 case.
Foochow.....	Oct. 29-Dec. 16.....			Present.
Harbin.....	Nov. 6-Dec. 17.....	3		
Hongkong.....	Oct. 28-Dec. 30.....	349	243	
Do.....	Dec. 31-Feb. 24.....	436	364	Present in vicinity.
Kwangtung Province—				
Chaoyang district.....	Jan. 21-27.....			Present. Vicinity of Swatow.
Mukden.....	Dec. 9-30.....			Do.
Do.....	Dec. 31-Mar. 18.....			Do.
Nanking.....	Nov. 12-25.....			Do.
Shanghai.....	Jan. 28-Feb. 3.....	1		
Tientsin.....	Dec. 17-30.....	1	1	
Do.....	Jan. 28-Feb. 3.....	2		
Tsingtao.....	Dec. 1-9.....	3		
Do.....	Dec. 28-Feb. 24.....	58	2	
Colombia:				
Espinal.....	Feb. 17.....			Present. Suburb of Cartagena.
Cuba:				
Casa Blanca.....	Jan. 12.....	1		Vicinity of Habana. Case landed Jan. 1, 1917, from s. s. Alfonso XII, from Santander, Spain.
Enercujada.....	Jan. 10.....	1		In Santa Clara Province. Case landed from s. s. Montevideo, from Barcelona, via Las Palmas, Canary Islands, and Porto Rico; arrived at Habana Jan. 6, 1917.
Guanabacoa.....	Jan. 9.....	1		Vicinity of Habana. Case landed from s. s. Montevideo.
Habana.....	Jan. 10-20.....	2		At Mariel quarantine station. From s. s. Montevideo.
Ecuador:				
Guayaquil.....	Nov. 1-30.....	10	1	
Egypt:				
Alexandria.....	Dec. 25-31.....		3	
Do.....	Jan. 3-Feb. 11.....	2	1	
Cairo.....	June 11-July 1.....	50	20	
Do.....	July 2-Oct. 21.....	60	20	
Port Said.....	June 11-17.....	1	1	
Do.....	Aug. 20-Sept. 9.....	2	1	
France:				
Marseille.....	Oct. 1-Dec. 31.....		16	
Do.....	Feb. 1-28.....		2	
Paris.....	Dec. 17-23.....	1		
Do.....	Jan. 14-20.....		1	
Germany:				
Bremen.....	Dec. 31-Jan. 20.....	2		
Hamburg district.....do.....	52		

CHOLERA, PLAGUE, SMALLPOX, TYPHUS FEVER, AND YELLOW FEVER—Continued.

Reports Received from Dec. 30, 1916, to Apr. 13, 1917—Continued.

SMALLPOX—Continued.

Place.	Date.	Cases.	Deaths.	Remarks.
Great Britain:				
Liverpool.....	Feb. 4-Mar. 3.....	3	1	
Greece:				
Athens.....	Jan. 1-15.....		5	
Hawaii:				
Honolulu.....	Jan. 9.....	1		From s. s. Tenyo Maru from oriental ports.
Do.....	Jan. 24.....	1		From s. s. Ecuador from Hong-kong.
India:				
Bombay.....	Dec. 10-30.....	5	1	Oct. 8-14, 1916: Cases, 3; deaths, 3. Received out of date. Original report lost on s. s. Arabia.
Do.....	Dec. 31-Feb. 3.....	35	12	
Calcutta.....	Nov. 5-Dec. 2.....		2	
Karachi.....	Dec. 31-Jan. 13.....	2		
Madras.....	Nov. 5-Dec. 30.....	35	19	
Do.....	Dec. 31-Feb. 3.....	57	17	
Moulmein.....	Oct. 28-Nov. 14.....		4	
Rangoon.....	Oct. 28-Dec. 30.....	17	1	
Do.....	Dec. 31-Jan. 27.....	3	1	
Indo-China:				
Provinces—				
Anam.....	Apr. 1-June 30.....	45	8	Apr. 1-June 30, 1916: Cases, 334; deaths, 28. July 1-Nov. 30, 1916: Cases, 357; deaths, 131.
Do.....	July 1-Nov. 30.....	93	42	
Cambodia.....	Apr. 1-June 30.....	30	11	
Do.....	July 1-Oct. 31.....	16	8	
Cochin-China.....	Apr. 1-June 30.....	44	5	
Do.....	July 1-Nov. 30.....	184	59	
Laos.....	Aug. 1-Oct. 31.....	39	16	
Tonkin.....	Apr. 1-June 30.....	215	4	
Do.....	July 1-Nov. 30.....	14	5	
Saigon.....	Nov. 6-Dec. 31.....	28	7	
Do.....	Jan. 1-Feb. 4.....	48	14	
Italy:				
Turin.....	Feb. 19-25.....	5	1	Roumanian refugees.
Japan:				
Ehime.....	Jan.-Feb.....			Present.
Hyogo.....	do.....			Do.
Kagawa.....	do.....			Do.
Kobe.....	Nov. 28-Dec. 10.....	4	1	
Do.....	Jan. 1-Mar. 11.....	65	15	
Kochi.....	Jan.-Feb.....			Present.
Osaka.....	Jan. 22-Mar. 5.....	225	42	
Java:				
East Java.....				Sept. 16-Dec. 31, 1916: Cases, 92; deaths, 2.
Surabay.....	Nov. 4-10.....	1		
Mid-Java.....				Sept. 16-Dec. 29, 1916: Cases, 227; deaths, 24.
Samarang.....	Nov. 4-10.....	3		
West Java.....				Sept. 29-Dec. 28, 1916: Cases, 408; deaths, 63.
Batavia.....	Sept. 29-Dec. 28.....	54	9	
Do.....	Dec. 29-Jan. 11.....	22	1	
Mexico:				
Durango.....	Feb. 17.....			Present; also in vicinity.
Mexico City.....	Dec. 10-30.....	20		
Do.....	Dec. 31-Mar. 3.....	72		
Nuevo Laredo.....	Dec. 10-30.....	1		
Vera Cruz.....	Feb. 13-24.....		1	
New Zealand:				
Auckland.....	Feb. 4-10.....	4		
Norway:				
Trondhjem.....	Jan. 1-31.....	2		
Philippine Islands:				
Manila.....	Jan. 21-Feb. 10.....	12		July 30-Dec. 30, 1916: Cases, 10.
Portugal:				
Lisbon.....	Nov. 19-Dec. 2.....	6		
Portuguese East Africa:				
Lorenc Marques.....	Sept. 1-30.....		1	
Russia:				
Archangel.....	Nov. 25-Dec. 29.....	6	1	Nov. 13-25, 1916: Cases, 35; deaths, 8.
Do.....	Jan. 1-Feb. 13.....	29	5	
Moscow.....	Oct. 16-Dec. 18.....	95	23	
Petrograd.....	Oct. 8-Dec. 30.....	180	65	
Riga.....	Dec. 31-Jan. 27.....	4		
Vladivostock.....	Jan. 22-23.....	1		

CHOLERA, PLAGUE, SMALLPOX, TYPHUS FEVER, AND YELLOW FEVER—Continued.

Reports Received from Dec. 30, 1916, to Apr. 13, 1917—Continued.

SMALLPOX—Continued.

Place.	Date.	Cases.	Deaths.	Remarks.
Spain:				
Cadiz.....	Nov. 1-Dec. 31.....		3	Jan. 1-Dec. 31, 1916: Deaths, 405.
Madrid.....do.....		144	
Do.....	Jan. 1-31.....		35	
Malaga.....	Sept. 1-Nov. 30.....		15	
Seville.....	Nov. 1-30.....		22	
Do.....	Jan. 1-Feb. 28.....		16	
Valencia.....	Nov. 19-Dec. 23.....	5	1	
Do.....	Jan. 14-Mar. 10.....	6		
Straits Settlements:				
Penang.....	Oct. 28-Dec. 30.....	16	3	
Do.....	Dec. 31-Mar. 3.....	24	3	
Singapore.....	Nov. 19-Dec. 30.....	3	2	
Do.....	Jan. 7-13.....	1	1	
Sweden:				
Gothenburg.....	Jan. 28-Feb. 3.....		1	
Switzerland:				
Basel.....	Nov. 5-11.....	1		
Do.....	Dec. 31-Feb. 10.....	19		
Tunisia:				
Tunis.....	Nov. 25-Dec. 15.....	51	27	
Do.....	Dec. 30-Mar. 9.....	66	21	
Turkey in Asia:				
Trebizond.....	Nov. 11-Dec. 30.....	1	1	
Do.....	Dec. 31-Feb. 3.....	5	4	
Union of South Africa:				
Johannesburg.....	Sept. 10-Dec. 30.....	45		
Do.....	Dec. 31-Jan. 27.....	6		
Venezuela:				
Maracaibo.....	Mar. 3-24.....		18	
On vessel:				
S. S. Nippon Maru.....	Jan. 22.....	2		Landed at Yokohama quarantine. En route to Honolulu. Vessel from oriental ports.
Do.....	Jan. 24-Feb. 3.....	9	3	

TYPHUS FEVER.

Argentina:				
Rosario.....	Nov. 1-30.....		1	
Austria-Hungary:				
Austria—				
Vienna.....	Nov. 5-Dec. 30.....	21	2	
Do.....	Dec. 31-Jan. 20.....	6	2	
Hungary—				
Budapest.....	Nov. 5-Dec. 30.....	3	1	
Do.....	Jan. 14-20.....	10	3	
Belgium:				
Ghent.....	Oct. 29-Nov. 4.....		1	
Liege.....do.....		1	
Do.....	Jan. 28-Feb. 3.....		1	
China:				
Antung.....	Nov. 27-Dec. 10.....	6		
Do.....	Jan. 15-21.....		2	
Hankow.....	Nov. 12-18.....	1		
Tientsin.....	Oct. 29-Nov. 4.....	1		
Tsingtao.....	Dec. 28-Feb. 24.....	4		
Cuba:				
Santiago.....	Dec. 7-13.....	1	1	
Egypt:				
Alexandria.....	Nov. 12-Dec. 31.....	28	12	Nov. 19-25, 1916: 1 case; Dec. 17-23, 1916: Cases, 4.
Do.....	Jan. 1-Feb. 11.....	129	25	
Cairo.....	June 11-July 1.....	275	142	
Do.....	July 2-Oct. 28.....	285	149	
Port Said.....	June 11-17.....	20	9	
Do.....	July 2-Oct. 14.....	10	8	
Germany:				
Berlin.....	Oct. 15-Dec. 23.....		7	
Bremen.....	Oct. 22-Dec. 30.....	1	3	
Do.....	Dec. 31-Jan. 13.....	1	2	
Frankfort-on-Main.....	Nov. 12-18.....		1	
Königsberg.....	Nov. 12-Dec. 23.....	5	5	
Do.....	Dec. 31-Jan. 20.....	5	2	
Nuremberg.....	Oct. 29-Nov. 11.....	3		
Stettin.....	Jan. 21-27.....		1	

CHOLERA, PLAGUE, SMALLPOX, TYPHUS FEVER, AND YELLOW FEVER—Continued.

Reports Received from Dec. 30, 1916, to Apr. 13, 1917—Continued.

TYPHUS FEVER—Continued.

Place.	Date.	Cases.	Deaths.	Remarks.
Great Britain:				
Cork.....	Jan. 7-Feb. 3.....	1	1	
Glasgow.....	Dec. 3-30.....	4		
Do.....	Jan. 7-13.....		1	
Greece:				
Saloniki.....	Nov. 7-Dec. 25.....		36	
Do.....	Dec. 26-Jan. 1.....		9	
Java:				
East Java.....				Sept. 16-Dec. 16, 1916: Cases, 10.
Mid-Java.....				Sept. 16-Dec. 29, 1916: Cases, 87;
Samarang.....	Nov. 4-Dec. 1.....	10		deaths, 7.
West Java.....				Sept. 29-Dec. 28, 1916: Cases, 185;
Batavia.....	Sept. 29-Dec. 28.....	139	12	deaths, 13. Dec. 29, 1916-Jan.
Do.....	Dec. 29-Jan. 18.....	42	1	18, 1917: Cases, 53; deaths, 2.
Mexico:				
Aguascalientes.....	Dec. 22.....			Epidemic.
Ciudad Juarez.....				July, 1916-Feb. 5, 1917: Cases,
				100 (estimated).
Durango.....	Dec. 12.....			Present.
Do.....	Jan.-Feb.....			Present. Estimated deaths
Mexico City.....	Dec. 3-30.....	835		daily, about 25. Present
Do.....	Dec. 31-Mar. 3.....	1,028		throughout year 1916.
Nuevo Laredo.....	Dec. 10-16.....	4		July 1-Dec. 16, 1916: Cases, 28.
Netherlands:				
Rotterdam.....	Nov. 26-Dec. 30.....		8	
Do.....	Feb. 4-10.....		1	
Russia:				
Archangel.....	Nov. 25-Dec. 29.....	29	9	
Do.....	Jan. 1-Feb. 10.....	17	11	
Moscow.....	Oct. 16-Dec. 10.....	92	13	
Petrograd.....	Oct. 8-Dec. 30.....	155	44	
Vladivostok.....	Jan. 22-28.....	1		
Spain:				
Madrid.....	Nov. 1-Dec. 31.....		3	Jan. 1-Dec. 31, 1916: Deaths, 35.
Do.....	Jan. 1-Feb. 28.....		3	
Straits Settlements:				
Penang.....	Feb. 25-Mar. 3.....	1		
Sweden:				
Stockholm.....	Nov. 23-Dec. 4.....	1		
Do.....	Dec. 31-Jan. 6.....	3		
Switzerland:				
Basel.....	Feb. 18-24.....	1		
Zurich.....	Dec. 3-9.....	1		
Do.....	Jan. 1-31.....	3		
Tunisia:				
Tunis.....	Dec. 16-22.....	1		
Turkey in Asia:				
Haifa.....	Oct. 16-22.....	1		
Trehizond.....	Dec. 17-30.....	3	3	
Do.....	Dec. 31-Feb. 3.....		3	

YELLOW FEVER.

Brazil:				
Espirito, Santo, State.....	Jan. 27-Feb. 26.....	18	4	
Ecuador:				
Babahoyo.....	Nov. 1-30.....	1	1	
Chobo.....	do.....	1		
Duran.....	Oct. 1-31.....	1		
Guayaquil.....	Sept. 1-Dec. 31.....	46	24	
Do.....	Jan. 1-31.....	17	7	
Milagro.....	Sept. 1-30.....	1		
Do.....	Oct. 1-31.....	2	1	
Do.....	Jan. 1-31.....	1		
Gold coast.....				In 1915: Cases, 2; deaths, 2. Eu-
				ropean and native.