

PUBLIC HEALTH REPORTS

VOL. 32

MARCH 23, 1917

No. 12

QUARANTINE REQUIREMENTS.

FOR PORTS OF THE UNITED STATES SOUTH OF MARYLAND.

The following instructions, dated March 16, 1917, have been issued to officers of the United States Public Health Service on duty at quarantine stations:

For your guidance the following provisional requirements will apply to vessels from Mexico arriving at ports of the United States south of the southern boundary of Maryland during the close quarantine season:

1. Vessels from Progreso or Tuxpam, that have discharged or loaded cargo at sea, have not been alongside of wharf, have had no crew ashore and carry no passengers, may be passed without fumigation or detention of crew or vessel, if all are well upon arrival, and the above requirements have been certified to by an accredited medical officer of the United States.

2. Vessels from Tampico that have been fumigated prior to sailing, or have not been exposed to infestation by stegomyia, and present a bill of health bearing certificate thereto by an accredited medical officer of the United States, may be passed without fumigation or detention of crew or vessel, if all are well upon arrival.

3. Vessels from Frontera that have discharged or loaded cargo at sea, have not been alongside of wharf, have had no crew ashore, and carry no passengers, may be passed without fumigation or detention of vessel or crew, if all are well upon arrival, and the above requirements have been certified to by the American consul at that port.

4. Vessels from Puerto Mexico that have not been alongside of wharf at that place, but have discharged or loaded cargo at isolated wharves along the Uspanapa River, may be passed without detention of crew or vessel, provided all are well upon arrival and the foregoing certified to by the American consul at Puerto Mexico.

5. Vessels from the above-mentioned ports that have not complied with the foregoing requirements, and vessels from all other Mexican ports, shall be treated according to the provisions of paragraph 105, United States Quarantine Regulations.

6. Vessels from Colombia, Venezuela, or any port in South America and the West Indies, suspected of being infected with yellow fever, shall be treated according to the provisions of paragraph 105, United States Quarantine Regulations.

These requirements are provisional in nature, and subject to alteration, depending on change in the health conditions of the various aforementioned ports.

COMBATING TYPHUS FEVER ON THE MEXICAN BORDER.

By C. C. PIERCE, Senior Surgeon, United States Public Health Service.

Typhus fever has for many years been endemic in the plateau regions of Mexico, but attracted little attention in the United States until about a year ago.

The disturbed political conditions in Mexico for the past five years and the consequent migration of refugees, soldiers, and their families, with the attendant misery, poverty, and absolute lack of sanitary measures, have resulted in spreading typhus fever to all parts of Mexico, its prevalence in border towns near the States being a recognized menace.

Notwithstanding this wide distribution of the disease, it is largely limited to the class of the population which is suffering from extreme poverty and is vermin infested. The only other persons who have become infected with typhus are those who have come into contact with this class and doctors, nurses, and others whose duties have brought them into contact with persons actually ill with typhus.

During December, 1915, three cases of typhus were reported at Laredo, Tex., and the United States Public Health Service at once sent an officer to the border to institute measures for the prevention of the spread of typhus from Mexico to the United States. In order quickly to accomplish this purpose, abandoned disinfecting plants that were established years ago in Nuevo Laredo, Piedras Negras, and Juarez, Mexico, were rehabilitated and put into operation, so that clothing of louse-infested persons might be sterilized with steam, and their bodies bathed with soap and water before they were allowed to enter the States. At other ports temporary measures were carried out to limit the introduction of typhus. While these measures gave considerable protection, it was realized that in order to properly control the situation fully equipped disinfecting plants, with facilities for bathing, handling baggage, and sterilizing clothing, would have to be built on American territory at border ports, so that they might be operated entirely under American control. Construction of these quarantine stations has now been completed at El Paso, Eagle Pass, Brownsville, Hidalgo, and Rio Grande City, all in Texas. The plant at Laredo will soon be in operation.

The detailed method of treating persons arriving at the Mexican border to free them of lice will be briefly described, in order that health officers or others engaged in sanitation of labor camps, or of groups of persons likely to be louse infested, may know what is being done along the border.

Figure 1 shows the international bridge between Juarez and El Paso, the front end of the disinfecting plant, and Mexicans waiting to be de-loused.

Figure 2 shows the side view of the service plant and yard.

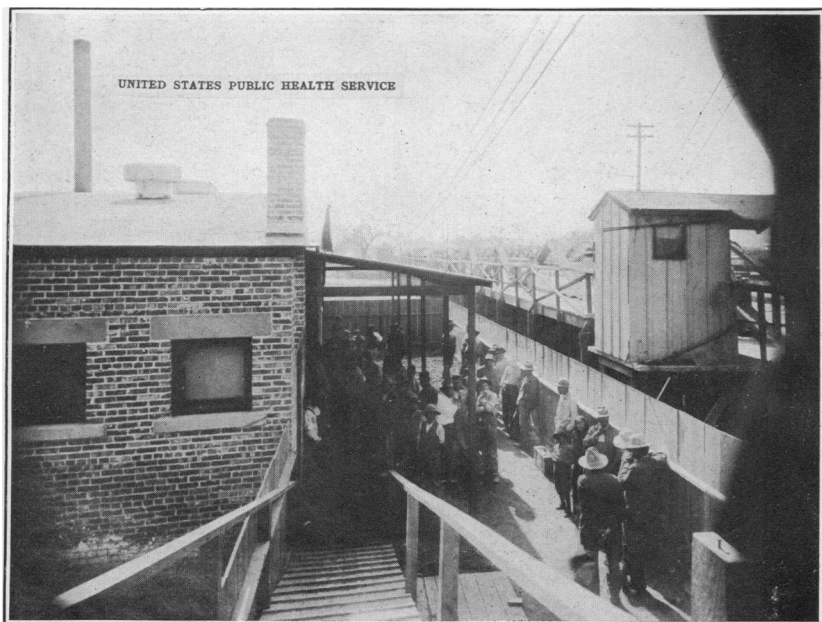


FIG. 1.—INTERNATIONAL BRIDGE, FRONT END OF EL PASO DISINFECTION STATION, AND MEXICANS WAITING TO BE DE-LOUSED.



FIG. 2.—SIDE VIEW OF DISINFECTING PLANT AND YARD.



FIG. 3.—CLOTHING READY FOR DE-LOUSING BY STEAM.

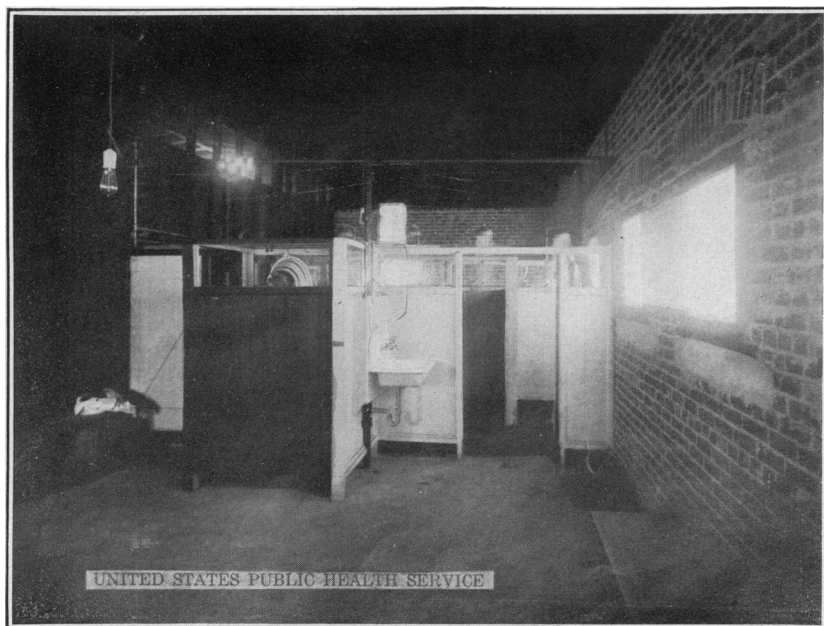


FIG. 4.—BATHS ON WOMEN'S SIDE OF PLANT, LOOKING FROM UNDRESSING ROOM.

All persons coming to El Paso from Mexico, considered as likely to be vermin infested, are sent through this plant for disinfection.

The men and women are separated, men entering one side of the building and women and small children the other. In suitable rooms all clothing is removed and pushed through an opening in the wall into the disinfecting room, where the bundles are placed in the steam-chamber carriage run out to receive them. Shoes, hats, belts, and other articles injured by steam are dropped through another opening into a large laundry basket, and when necessary are exposed to cyanogen. (Fig. 3.)

Persons having money or valuables place such articles in a small cotton bag tied with a string, having a numbered brass check attached. The duplicate number of this check is given to the owner on a cord, so that it can be put around the neck while bathing.

After all clothing has been removed and passed into the disinfecting room the naked person passes in front of a male or female attendant, as the sex requires, before entering the baths. This attendant examines the head to see if lice are present. If head lice are found, the hair of the men or boys is clipped with No. 00 clippers, the hair dropping on a newspaper, which is then rolled up and burned. Women with head lice have a mixture of equal parts of kerosene and vinegar applied to the head and hair for half an hour with a towel covering the head. The dilute acetic acid loosens the eggs from the hair and the kerosene kills or stupefies the adult lice, which are removed by washing the head and hair with warm water and soap. If necessary, the process is repeated to dislodge all eggs or nits.

After being passed by the attendant, liquid soap is sprayed upon the body from an elevated reservoir and the person proceeds to the baths. The soap container is a 5-gallon can with a spout in the bottom to which rubber tubing is attached, a clip similar to that on a fountain syringe controlling the spray. The soap is made by boiling 1 part of soap chips in 4 parts of water and then adding 2 parts of kerosene oil. This jellies when cold, and 1 part of this soap jelly is added to 4 parts of warm water, making a good liquid soap at very small cost.

The attendant watches the bathing process, and when the bath is finished the persons being treated pass into other rooms and wait for their clothing, which is handed back to them from the "clean end" of the steam chamber. No identification checks are placed on clothing bundles, each person picking out his own bundle.

When the clothes in bundles are passed into the disinfecting room they are at once placed in the carriage of the steam chamber, and as soon as this is filled the chamber is closed. A vacuum of 10 to 15 inches is created in the chamber and live steam is then introduced until the pressure gauge shows 20 pounds, which gives a temperature

of 259° F. This is maintained for 10 minutes to insure penetration of all bundles, after which time the chamber is opened.

The creation of a second vacuum of 10 inches and holding it for 10 minutes will dry the clothes completely, but in the dry climate of El Paso this is unnecessary.

The time for sterilization of clothing is from 25 to 35 minutes, depending on the amount of clothing in the chamber. This process has been controlled by wrapping a thermometer inside bundles of clothing placed in different parts of the chamber load, top, bottom, middle, and ends, until the operator knows from experience exactly how long to expose the clothing. Lice and their eggs are killed by a very short exposure to 212° F., but the higher temperature is easily obtained and held to insure efficiency.

After the persons are dressed they pass into another room, where they reclaim any bundles they may have had. They are looked over by the foreman in charge of the plant, all are vaccinated, and the following certificate is given them:

UNITED STATES PUBLIC HEALTH SERVICE, MEXICAN BORDER QUARANTINE.

....., 191...

The bearer

Male }, age, has been this day deloused, bathed, vaccinated,
Female } clothing and baggage disinfected.

Has children under 10 years of age..

.....
Surgeon, U. S. P. H. S.

Children under 10 years of age are not given certificates, but are mentioned on those given their parents.

From this "finishing room" the aliens are sent through the immigration building, where they receive their medical inspection and are properly disposed of by the United States Immigration Service.

At El Paso, bath water is heated by a coal-burning heater connected with a large tank. From this tank the hot water is led through a pipe which is joined to the cold-water pipe just before the shower heads branch off. A valve in both the hot and cold water pipes near this junction makes it possible for an attendant to regulate the temperature of water to the baths. The persons bathed do not understand modern plumbing and can not regulate the flow of hot and cold water through a mixing valve, so one valve at the shower always gives warm water. A better arrangement is to lead the hot water into a 100-gallon mixing tank, to which cold water is also led, the right temperature being maintained there by closing off cold or hot water as required and testing the temperature at a faucet provided therefor. From this mixing tank water is dis-

tributed to the showers through one pipe. This arrangement will be in operation at the Laredo plant.

The cyanide gas room is outside the main building at El Paso, but at other stations is inside the disinfecting room. Trunks, suit cases, and similar articles are treated with cyanogen, when necessary.

This treatment of baggage for the destruction of lice is not regarded as particularly important except in those cases where soiled clothing is contained in trunks or grips. It is done, however, so that every article carried in by immigrants will be brought to the disinfecting plant. All baggage treated at the plant is marked as follows:

UNITED STATES PUBLIC HEALTH SERVICE.

This piece of baggage disinfected this date:

.....

As an additional precaution to prevent the spread of typhus from border towns to other parts of the United States, no Mexicans of the laboring class are allowed to leave a border town by train until they and their baggage have been treated at the disinfecting plant. All transportation companies are cooperating to see that this requirement is complied with, and an inspector of the United States Public Health Service is on duty at railway stations to assist in carrying out this regulation. Since the establishment of quarantine restriction at border ports, a noticeable improvement in the appearance of local passengers from neighboring Mexican towns has been observed as regards cleanliness of person and underclothing.

From the date of opening the service plant at El Paso, January 2 to February 9, 1917, 12,360 persons have been bathed, de-loused, and vaccinated at that port.

The measures now being carried out at the border by the United States Public Health Service, the cooperation of transportation companies, and the work of various State boards of health in sanitating railroad construction and other labor camps should control the spread of typhus fever from Mexico to the United States.

PREVALENCE OF DISEASE.

No health department, State or local, can effectively prevent or control disease without knowledge of when, where, and under what conditions cases are occurring.

UNITED STATES.

CEREBROSPINAL MENINGITIS.

Connecticut.

Collaborating Epidemiologist Black reported that during the period from February 1 to March 17, 1917, 61 cases of cerebrospinal meningitis were notified in the State of Connecticut.

Minnesota.

Collaborating Epidemiologist Bracken reported that during the week ended March 17, 1917, 19 cases of cerebrospinal meningitis, with 4 deaths, were notified in Minnesota as follows: Benton County, Langola Township, boy 5 years old, sick February 23. Blue Earth County, Mankato, farmer, sick March 5, died March 10. Freeborn County, Moscow Township, farmer, sick March 2. Hennepin County, Brooklyn, girl 5 years old, sick March 7; Minneapolis, city clerk, sick March 12; girl 2 years old, sick March 10; laborer, sick March 8; woman cook, sick March 5; boy 3 years old, sick March 9; boy 8 months old, sick March 13; janitor, sick March 9, died March 10; farmer, sick February 24; barber, sick March 1; schoolgirl 12 years old, sick March 1, died March 3; schoolboy 7 years old, sick February 16. Richfield, girl 6 years old, sick March 6. Ramsey County, St. Paul, boy 2 months old, sick March 7, died March 14; boy 14 months old, sick March 11. St. Louis County, Duluth, child 5 years old, sick March 8. Making a total of 52 cases, with 20 deaths, reported since December 26, 1917.

State Reports for February, 1917.

Place.	New cases reported.	Place.	New cases reported.
Massachusetts:		West Virginia:	
Bristol County—		Harrison County.....	1
Fall River.....	1	Marion County.....	1
New Bedford.....	1	Ohio County.....	3
Essex County—		Randolph County.....	1
Beverly.....	1	Total.....	6
Lynn.....	1		
Middlesex County—		Wisconsin:	
Lowell.....	1	Milwaukee County.....	2
Suffolk County—		Outagamie County.....	1
Boston.....	3	Vernon County.....	1
Worcester County—		Washburn County.....	1
Milford Town.....	1	Total.....	5
Total.....	9		

City Reports for Week Ended Mar. 3, 1917.

Place.	Cases.	Deaths.	Place.	Cases.	Deaths.
Alameda, Cal.....	1	New Haven, Conn.....	1
Birmingham, Ala.....	1	New York, N. Y.....	12	4
Bridgeport, Conn.....	1	Omaha, Nebr.....	3	1
Buffalo, N. Y.....	1	Orange, N. J.....	1
Chicago, Ill.....	4	1	Philadelphia, Pa.....	10	5
Cleveland, Ohio.....	8	Pittsburgh, Pa.....	1
Dubuque, Iowa.....	1	1	Providence, R. I.....	1
Duluth, Minn.....	1	Reading, Pa.....	1
El Paso, Tex.....	1	Rochester, N. Y.....	1
Hartford, Conn.....	6	St. Louis, Mo.....	4	2
Kansas City, Kans.....	2	St. Paul, Minn.....	1
Kansas City, Mo.....	3	2	Schenectady, N. Y.....	1
Lowell, Mass.....	1	Trenton, N. J.....	1

DIPHTHERIA.

See Diphtheria, measles, scarlet fever, and tuberculosis, page 439.

ERYSIPELAS.

City Reports for Week Ended Mar. 3, 1917.

Place.	Cases.	Deaths.	Place.	Cases.	Deaths.
Akron, Ohio.....	3	Los Angeles, Cal.....	3
Ann Arbor, Mich.....	3	Milwaukee, Wis.....	6	2
Baltimore, Md.....	2	1	Newark, N. J.....	9	1
Boston, Mass.....	2	New Castle, Pa.....	1
Brockton, Mass.....	1	New York, N. Y.....	10
Buffalo, N. Y.....	5	2	Niagara Falls, N. Y.....	1
Chicago, Ill.....	42	4	Omaha, Nebr.....	1	1
Cincinnati, Ohio.....	2	Philadelphia, Pa.....	7	4
Cleveland, Ohio.....	7	1	Pittsburgh, Pa.....	11	1
Duluth, Minn.....	1	Quincy, Ill.....	1
Erie, Pa.....	1	Richmond, Va.....	1
Evansville, Ind.....	1	Rochester, N. Y.....	2
Flint, Mich.....	1	St. Louis, Mo.....	16	5
Harrisburg, Pa.....	2	St. Paul, Minn.....	6
Hartford, Conn.....	2	San Francisco, Cal.....	6	2
Jackson, Mich.....	1	Somerville, Mass.....	1
Kalamazoo, Mich.....	1	Troy, N. Y.....	1	1
Kansas City, Mo.....	2	Williamsport, Pa.....	1

LEPROSY.

Louisiana—New Orleans Parish.

During the month of February, 1917, 3 cases of leprosy were notified in New Orleans Parish, La.

New Jersey—Jersey City.

During the month of February, 1917, 1 case of leprosy was notified in Jersey City, N. J.

City Report for Week Ended Mar. 3, 1917.

During the week ended March 3, 1917, one case of leprosy was reported in New Orleans, La.

MALARIA.**State Reports for February, 1917.**

Place.	New cases reported.	Place.	New cases reported.
Maryland:		Massachusetts—Continued.	
Charles County—		Suffolk County—	
Waldorf, R. F. D.....	1	Boston.....	1
Massachusetts:		Total.....	2
Hampshire County—			
Amherst Town.....	1		

City Reports for Week Ended Mar. 3, 1917.

Place.	Cases.	Deaths.	Place.	Cases.	Deaths.
Cincinnati, Ohio.....	1	Newark, N. J.....	1
Fall River, Mass.....	1	New Orleans, La.....	1	1

MEASLES.**California—Los Angeles.**

Senior Surg. Brooks reported that during the week ended March 10, 1917, 253 cases of measles were notified in Los Angeles, Cal. Two hundred and ten cases were reported during the previous week.

Washington—Seattle.

Surg. Lloyd reported that during the 14 days ended March 10, 1917, 291 cases of measles with 4 deaths, were notified in Seattle, Wash., making a total of 7,087 cases, with 17 deaths, reported since February 15, 1916.

See also Diphtheria, measles, scarlet fever, and tuberculosis, page 439.

PELLAGRA.**District of Columbia Report for February, 1917.**

During the month of February, 1917, one case of pellagra was reported in the District of Columbia.

City Reports for Week Ended Mar. 3, 1917.

Place.	Cases.	Deaths.	Place.	Cases.	Deaths.
Buffalo, N. Y.....		1	Oklahoma City, Okla.....		1
Charleston, S. C.....	1	1	Washington, D. C.....	1

PLAGUE.**Hawaii—Paauilo.**

Surg. Trotter reported the occurrence of a fatal case of plague in man at Paauilo, Hawaii, March 7, 1917.

PNEUMONIA.

City Reports for Week Ended Mar. 3, 1917.

Place.	Cases.	Deaths.	Place.	Cases.	Deaths.
Allentown, Pa.	3	Medford, Mass.	1
Baltimore, Md.	34	27	Newark, N. J.	99	22
Binghamton, N. Y.	6	1	New Castle, Pa.	4
Birmingham, Ala.	1	9	Norristown, Pa.	2
Braddock, Pa.	5	Oakland, Cal.	7	2
Chicago, Ill.	361	157	Pasadena, Cal.	1
Cincinnati, Ohio.	1	9	Philadelphia, Pa.	187	91
Cleveland, Ohio.	54	42	Pittsburgh, Pa.	65	40
Cofteyville, Kans.	1	Reading, Pa.	1	1
Detroit, Mich.	34	12	Rochester, N. Y.	10	5
Dubuque, Iowa	2	2	Sacramento, Cal.	2
Duluth, Minn.	16	Saginaw, Mich.	1	1
Flint, Mich.	1	San Diego, Cal.	2	2
Grand Rapids, Mich.	5	1	Sandusky, Ohio.	1
Harrison, N. J.	2	San Francisco, Cal.	19	9
Jackson, Mich.	3	2	Schenectady, N. Y.	2
Kalamazoo, Mich.	5	3	Toledo, Ohio.	1	7
Kansas City, Mo.	17	31	Topeka, Kans.	1	3
Lancaster, Pa.	6	Wichita, Kans.	3
Lexington, Ky.	5	11	Wilmington, N. C.	2	3
Lima, Ohio.	1	1	York, Pa.	1
Los Angeles, Cal.	2	5			

POLIOMYELITIS (INFANTILE PARALYSIS).

State Reports for February, 1917.

Place.	New cases reported.	Place.	New cases reported.
Maryland:		West Virginia—Continued.	
Baltimore County—		Marion County—	
Gittings.....	1	Fairmont.....	7
Govans.....	1	Mingo County—	
Total.....	2	Williamson.....	1
Massachusetts:		Preston County—	
Essex County—		Egion.....	1
Beverly.....	1	Randolph County—	
Suffolk County—		Evenwood.....	1
Boston.....	1	Total.....	13
Total.....	2	Wisconsin:	
West Virginia:		Kenosha County.....	1
Berkeley County.....	1	Portage County.....	1
Harrison County—		Vernon County.....	1
Norwood.....	1	Total.....	3
Lewis County—			
Bennett.....	1		

City Reports for Week Ended Mar. 3, 1917.

Place.	Cases.	Deaths.	Place.	Cases.	Deaths.
Boston, Mass.	1	Newark, N. J.	1
Cleveland, Ohio.	1	New Britain, Conn.	1
Detroit, Mich.	1	New York, N. Y.	2
Lowell, Mass.	1	Providence, R. I.	1
Manchester, N. H.	7	7	South Bend, Mich.	2

SCARLET FEVER.

Scarlet fever has been unusually prevalent during the last two or three months in the city of Detroit, where there was reported a total of 1,740 cases between January 6 and March 17. The number reported during the week ended March 10 was 257; during the week ended March 17, 327. The disease also seems to be unusually prevalent in other cities of the middle west. In Chicago there were reported 3,248 cases between February 3 and March 17, the number of cases reported during the week ended March 17 being 706; during the previous week, 593.

See also Diphtheria, measles, scarlet fever, and tuberculosis, page 439.

SMALLPOX.**Connecticut.**

Collaborating Epidemiologist Black reported that during the period of 14 days ended March 17, 1917, 58 cases of smallpox were notified in Connecticut as follows: Easton, 1; Fairfield, 2; Hartford, 1; Naugatuck, 4; New London, 3; Newtown, 15; Old Lyme, 2; Stamford, 1; Stonington, 4; Torrington, 4; Waterbury, 19; Watertown, 2.

Minnesota.

Collaborating Epidemiologist Bracken reported that during the week ended March 17, 1917, two new foci of smallpox infection were reported in Minnesota, cases of the disease having been notified as follows: Morrison County, Swan River Township, 1; Redwood County, Gales Township, 1.

Ohio—Springfield.

Surg. Fox reported that during the week ended March 10, 1917, 10 cases of smallpox were notified in Springfield, Ohio, making a total of 53 cases reported since December 26, 1916.

Oklahoma—Okmulgee County Jail.

Asst. Surg. Slaughter reported that during the week ended March 17, 1917, 5 cases of smallpox occurred among prisoners in the Okmulgee County Jail.

Texas—Galveston.

Surg. Bahrenburg reported that 2 cases of smallpox were notified at Galveston, Tex., 1 on March 17 and 1 on March 20, 1917.

SMALLPOX—Continued.

State Reports for February, 1917.

Place.	New cases reported.	Deaths.	Vaccination history of cases.			
			Number vaccinated within 7 years preceding attack.	Number last vaccinated more than 7 years preceding attack.	Number never successfully vaccinated.	Vaccination history not obtained or uncertain.
Maryland:						
Baltimore City.....	2				2	
Baltimore County— Ruxton.....	1				1	
Total.....	3				3	
Massachusetts:						
Franklin County— Bernardston Town.....	1				1	
Suffolk County— Boston.....	1				1	
Total.....	2				2	
West Virginia:						
Cabell County.....	1					1
Jefferson County.....	1					1
McDowell County.....	1				1	
Raleigh County.....	1					1
Total.....	4				1	3

Wisconsin Report for February, 1917.

Place.	Cases.	Deaths.	Place.	Cases.	Deaths.
Wisconsin (Feb. 1-28):			Wisconsin (Feb. 1-28)—Con.		
Calumet County.....	1		Milwaukee County.....	2	
Chippewa County.....	13		Monroe County.....	5	
Dane County.....	2		Price County.....	1	
Douglas County.....	6		Rusk County.....	2	
Dunn County.....	5		Trempealeau County.....	11	
Eau Claire County.....	1		Winnebago County.....	1	
Grant County.....	1		Total.....	53	
Jackson County.....	1				
Marathon County.....	1				

City Reports for Week Ended Mar. 3, 1917.

Place.	Cases.	Deaths.	Place.	Cases.	Deaths.
Akron, Ohio.....	2		Marinette, Wis.....	4	
Baltimore, Md.....	3		Milwaukee, Wis.....	1	
Butte, Mont.....	6		Minneapolis, Minn.....	42	
Chicago, Ill.....	2		New Orleans, La.....	21	
Cincinnati, Ohio.....	1		New York, N. Y.....	1	
Cleveland, Ohio.....	17		Oakland, Cal.....	3	
Columbus, Ohio.....	2		Oklahoma City, Okla.....	12	
Covington, Ky.....	1		Omaha, Nebr.....	9	
Danville, Ill.....	5		Rockford, Ill.....	2	
Dubuque, Iowa.....	1		Rocky Mount, N. C.....	1	
Duluth, Minn.....	1		St. Louis, Mo.....	2	
Elgin, Ill.....	1		St. Paul, Minn.....	8	
Flint, Mich.....	6		Salt Lake City, Utah.....	2	
Fort Worth, Tex.....	1	1	San Francisco, Cal.....	10	
Indianapolis, Ind.....	2		Seattle, Wash.....	1	
Kansas City, Mo.....	1		Sioux City, Iowa.....	14	
Kokomo, Ind.....	1		Toledo, Ohio.....		1
La Crosse, Wis.....	1		Topeka, Kans.....	2	
Little Rock, Ark.....	5		Wichita, Kans.....	3	
Los Angeles, Cal.....	2				

TETANUS.

City Reports for Week Ended Mar. 3, 1917.

Place.	Cases.	Deaths.	Place.	Cases.	Deaths.
Malden, Mass.....		1	Roanoke, Va.....		1
New Orleans, La.....		1	Waltham, Mass.....		1
Portsmouth, Va.....		1			

TUBERCULOSIS.

See Diphtheria, measles, scarlet fever, and tuberculosis, page 439.

TYPHOID FEVER.

State Reports for February, 1917.

Place.	New cases reported.	Place.	New cases reported.
District of Columbia.....	7	Massachusetts—Continued.	
Maryland:		Essex County—Continued.	
Baltimore City.....	20	Newburyport.....	1
Allegany County—		Peabody Town.....	1
Midland.....	1	Middlesex County—	
Cumberland.....	2	Ayer Town.....	1
Baltimore County—		Cambridge.....	2
Govanstown.....	1	Everett.....	1
Mount Winans.....	1	Lowell.....	2
Arlington.....	4	Natick Town.....	1
Highlandtown.....	1	Somerville.....	1
Carroll County—		Tewksbury.....	1
Westminster.....	1	Norfolk County—	
Garrett County—		Brookline Town.....	1
Kitzmiller.....	1	Quincy.....	1
Bloomington.....	1	Wellesley Town.....	1
Harford County—		Weymouth Town.....	1
Houcks Mill, R. F. D.....	1	Plymouth County—	
Howard County—		Bridgewater Town.....	1
Ellicott City.....	10	Suffolk County—	
Montgomery County—		Boston.....	6
Unity, R. F. D.....	1	Revere.....	1
Boyd's Station, R. F. D.....	1	Worcester County—	
Prince George County—		Gardner Town.....	3
Seat Pleasant.....	1	Milford Town.....	1
Queen Annes County—		Warren Town.....	1
Carmichael, R. F. D.....	1	Winchendon Town.....	1
Barelay, R. F. D.....	5	Worcester.....	1
Church Hill, R. F. D.....	1	Total.....	45
Centerville.....	1		
Somerset County—		Vermont:	
Rehobeth.....	1	Chittenden County.....	1
Wenona.....	1	Franklin County.....	4
Wicomico County—		Rutland County.....	2
Wetipquin.....	1	Windsor County.....	1
Salisbury.....	1	Total.....	8
Total.....	59		
Massachusetts:		West Virginia:	
Barnstable County—		Boone County.....	2
Harwich Town.....	1	Braxton County.....	1
Berkshire County—		Hancock County.....	1
North Adams.....	1	Kanawha County.....	2
Bristol County—		Charleston.....	1
Fall River.....	3	Marshall County.....	1
Mansfield Town.....	1	Marion County.....	6
New Bedford.....	4	Mineral County.....	5
Essex County—		Mingo County.....	2
Amesbury Town.....	2	Monongalia County.....	2
Ipswich Town.....	1	Monroe County.....	1
Lawrence.....	1	Putnam County.....	1
Lynn.....	1	Raleigh County.....	2
		Ritchie County.....	1

TYPHOID FEVER—Continued.

State Reports for February, 1917—Continued.

Place.	New cases reported.	Place.	New cases reported.
West Virginia—Continued.		Wisconsin—Continued.	
Roane County.....	1	Lafayette County.....	1
Summers County.....	3	Manitowoc County.....	1
Upshur County.....	2	Milwaukee County.....	9
Webster County.....	2	Outagamie County.....	1
Wetzel County.....	13	Racine County.....	3
Total.....	49	Rusk County.....	1
Wisconsin:		Sauk County.....	1
Dodge County.....	2	Sheboygan County.....	1
Douglas County.....	5	Taylor County.....	1
Dunn County.....	1	Washburn County.....	1
La Crosse County.....	1	Washington County.....	1
		Total.....	30

City Reports for Week Ended Mar. 3, 1917.

Place.	Cases.	Deaths.	Place.	Cases.	Deaths.
Alameda, Cal.....	2	New London, Conn.....	1
Albany, N. Y.....	3	New Orleans, La.....	2	2
Allentown, Pa.....	1	Newton, Mass.....	1
Baltimore, Md.....	7	3	New York, N. Y.....	17	4
Beaver Falls, Pa.....	4	Norfolk, Va.....	1
Berkeley, Cal.....	1	Oakland, Cal.....	1
Birmingham, Ala.....	1	Omaha, Nebr.....	1
Braddock, Pa.....	1	Philadelphia, Pa.....	6	2
Buffalo, N. Y.....	6	2	Pittsburgh, Pa.....	10	3
Charleston, S. C.....	3	Portland, Me.....	1	1
Chicago, Ill.....	7	1	Portland, Oreg.....	1
Cincinnati, Ohio.....	1	Richmond, Va.....	1
Cleveland, Ohio.....	4	1	Saginaw, Mich.....	2	1
Cumberland, Md.....	1	St. Louis, Mo.....	4
Detroit, Mich.....	1	St. Paul, Minn.....	1	1
Dubuque, Iowa.....	1	Salt Lake City, Utah.....	1
Duluth, Minn.....	1	San Diego, Cal.....	1
Fort Worth, Tex.....	1	San Francisco, Cal.....	1	1
Galveston, Tex.....	1	Seattle, Wash.....	1
Grand Rapids, Mich.....	3	1	South Bend, Ind.....	3
Jackson, Mich.....	1	Springfield, Ill.....	1
Lima, Ohio.....	1	Toledo, Ohio.....	2
Long Branch, N. J.....	1	Trenton, N. J.....	1
Los Angeles, Cal.....	4	Troy, N. Y.....	2	1
Lowell, Mass.....	1	1	Washington, D. C.....	1
Milwaukee, Wis.....	2	3	Wilkes-Barre, Pa.....	1	1
Minneapolis, Minn.....	1	Wilkesburg, Pa.....	2
New Bedford, Mass.....	1	Wilmington, Del.....	2
New Castle, Pa.....	3	Worcester, Mass.....	2

TYPHUS FEVER.

Texas.

Senior Surg. Pierce reported that during the period of 14 days ended March 10, 1917, 3 new cases of typhus fever were notified at El Paso, Tex., making a total of 69 cases reported on the Mexican border since July 1, 1916. During the two weeks period ended March 10, 1917, 79,010 persons were inspected. Of this number 9,469 were disinfected for destruction of vermin, and 3,433 were vaccinated. One person was refused admission for refusing disinfection, and 53 were refused admission because of illness.

PREVENTABLE DISEASES.

Massachusetts Report for Week Ended Mar. 3, 1917.

	Cases reported.		Cases reported.
Cerebrospinal meningitis.....	1	Scarlet fever.....	173
Chicken pox.....	211	Septic sore throat.....	5
Diphtheria.....	178	Tetanus.....	1
German measles.....	66	Trachoma.....	1
Malaria.....	1	Tuberculosis (pulmonary).....	184
Measles.....	653	Tuberculosis (other forms).....	17
Ophthalmia neonatorum.....	44	Typhoid fever.....	11
Poliomyelitis.....	2	Whooping cough.....	49

DIPHTHERIA, MEASLES, SCARLET FEVER, AND TUBERCULOSIS.

State Reports for February, 1917.

State.	New cases reported.			State.	New cases reported.		
	Diphtheria.	Measles.	Scarlet fever.		Diphtheria.	Measles.	Scarlet fever.
District of Columbia.....	48	207	43	Vermont.....	27	1,161	217
Maryland.....	138	758	131	West Virginia.....	55	931	47
Massachusetts.....	783	2,193	597	Wisconsin.....	223	352	924

City Reports for Week Ended Mar. 3, 1917.

City.	Population as of July 1, 1916 (estimated by U. S. Census Bureau).	Total deaths from all causes.	Diphtheria.		Measles.		Scarlet fever.		Tuberculosis.	
			Cases.	Deaths.	Cases.	Deaths.	Cases.	Deaths.	Cases.	Deaths.
Over 500,000 inhabitants:										
Baltimore, Md.	589,621	228	9	1	56	10	1	20	41	
Boston, Mass.	756,476	269	78	5	123	47	5	53	22	
Chicago, Ill.	2,497,722	686	204	21	677	10	576	24	133	80
Cleveland, Ohio.	674,073	235	50	1	101	1	28	44	24	
Detroit, Mich.	571,784	251	41	3	210	8	189	1	57	25
Los Angeles, Cal.	503,812	144	281	27	615	15	168	2	578	206
New York, N. Y.	5,602,841	1,733	110	12	89	2	2	1	90	82
Philadelphia, Pa.	1,709,518	774	15	1	118	1	11	35	10	
Pittsburgh, Pa.	579,090	256	97	5	515	7	64	1	69	30
St. Louis, Mo.	757,309	288								
From 300,000 to 500,000 inhabitants:										
Buffalo, N. Y.	468,558	185	17	8	1	12	30	16		
Cincinnati, Ohio.	410,476	131	19	3	25	17	27	14		
Jersey City, N. J.	306,345		15	7	7	20	18			
Milwaukee, Wis.	436,535	122	16	1	19	119	4	15	11	
Minneapolis, Minn.	363,454		17	11	32					
Newark, N. J.	408,894	138	16	1	59	24	47	14		
New Orleans, La.	371,747		21	5	200	3	42	21		
San Francisco, Cal.	463,516	168	23	3	435	3	58	51	22	
Seattle, Wash.	348,739	56	1	173	3	2	11	4		
Washington, D. C.	363,980	151	7	72		12	14	14		
From 200,000 to 300,000 inhabitants:										
Columbus, Ohio.	214,878	74	3	2	109	4	8	10	4	
Denver, Colo.	230,800	58	3	414	4	5		7		
Indianapolis, Ind.	271,708		4	76		8	10			
Kansas City, Mo.	297,847		19	4	181	101	1	11	10	
Portland, Oreg.	295,463	46	4	189	1	20	5	6		
Providence, R. I.	254,960		17	4	3	2	12	3	6	
Rochester, N. Y.	256,417	77	6	1	15	1	44	9	5	
St. Paul, Minn.	247,232	46	5	35		13	12	4		

DIPHTHERIA, MEASLES, SCARLET FEVER, AND TUBERCULOSIS— Continued.

City Reports for Week Ended Mar. 3, 1917—Continued.

City.	Popula- tion as of July 1, 1916 (estimated by U. S. Census Bureau).	Total deaths from all causes.	Diphtheria.		Measles.		Scarlet fever.		Tuber- culosis.	
			Cases.	Deaths.	Cases.	Deaths.	Cases.	Deaths.	Cases.	Deaths.
From 100,000 to 200,000 inhabit- ants:										
Albany, N. Y.	104,199		2		2		5		9	
Birmingham, Ala.	181,762	76	3	1	289	4	3		7	6
Bridgeport, Conn.	121,579	40	8		9		2		7	2
Cambridge, Mass.	112,981	137	15		29		7		8	3
Camden, N. J.	106,233		4		2		2		4	
Fall River, Mass.	128,366	52	1		100	2	1	1	18	3
Fort Worth, Tex.	104,562	20	2		89		1		1	
Grand Rapids, Mich.	128,291	40			92		11		2	2
Hartford, Conn.	110,900	55	6	1	3		4		4	1
Lawrence, Mass.	100,560	25	4	1	1		1	1	4	3
Lowell, Mass.	113,245	47	9	1	15		4		4	1
Lynn, Mass.	102,425	19					2		3	3
Nashville, Tenn.	117,057	48	2	1	82		1		5	5
New Bedford, Mass.	118,158	50			18		1		2	5
New Haven, Conn.	149,685		3		24				7	
Oakland, Cal.	198,604				64	3	8		9	
Omaha, Nebr.	165,470	45	6		9		34		34	3
Reading, Pa.	109,381	32	2	1	4		1		1	
Richmond, Va.	156,087	62	3		111		3		4	6
Salt Lake City, Utah	117,399	27	1		34		17			1
Springfield, Mass.	105,942	28	8	1	15		8		13	4
Syracuse, N. Y.	155,624	53	5		71	1	30		10	3
Toledo, Ohio.	191,554	84	4	1	14		82	3	1	10
Trenton, N. J.	111,593	39	5		2				9	1
Worcester, Mass.	163,314	65	5		4		15		11	2
From 50,000 to 100,000 inhabit- ants:										
Akron, Ohio.	85,625		16		48		3			
Allentown, Pa.	63,505	17	5				1		1	
Atlantic City, N. J.	57,660	6			71				5	
Bayonne, N. J.	69,893				1		4		3	
Berkeley, Cal.	57,653	8	1		15	1	3		3	1
Binghamton, N. Y.	53,973	26	8	3	18		17		1	2
Brockton, Mass.	67,449	17			2		4		2	
Canton, Ohio.	60,852	20			3		2		1	
Charleston, S. C.	60,734	29								2
Covington, Ky.	57,144	16	1						2	2
Duluth, Minn.	94,495		9		9		3		5	
Elizabeth, N. J.	86,690	37	5		2		6		5	3
El Paso, Tex.	63,705	46		1	9					9
Erie, Pa.	75,195		1		6		4		12	41
Evansville, Ind.	76,078	23			32				2	2
Flint, Mich.	54,772	19	10		1		16		6	1
Harrisburg, Pa.	72,015	16	3		2		1		3	1
Hoboken, N. J.	77,214	15	1		2		9		10	2
Johnstown, Pa.	68,529	27		1	9		1		2	
Kansas City, Kans.	99,437		1		7		13			
Lancaster, Pa.	50,853		1		19		18		1	
Little Rock, Ark.	57,343	14			55					
Malden, Mass.	51,155	13	2		2				2	1
Manchester, N. H.	78,283	27	1	1			1		3	3
Mobile, Ala.	58,221	27	2	1	25		1		4	2
New Britain, Conn.	53,794				1		5		6	1
Norfolk, Va.	89,612				67		3		1	2
Oklahoma City, Okla.	92,943	21			109	2	3			2
Passaic, N. J.	71,744	24	1				2		4	3
Pawtucket, R. I.	59,411	19	2				1			1
Portland, Me.	63,867	21	3		1					1
Rockford, Ill.	55,185	16	1		4					2
Sacramento, Cal.	66,895	20			4		1		4	1
Saginaw, Mich.	55,642	23			2		16		1	1
San Diego, Cal.	53,330				10		3		2	2
Schenectady, N. Y.	99,519	20	1		73		4		6	4
Sioux City, Iowa.	57,078				5		7			
Somerville, Mass.	87,039	21	6		5		5	1	2	
South Bend, Ind.	68,946	20	1				34			1
Springfield, Ill.	61,120	30	2		10		1			2
Troy, N. Y.	77,916		3	3	122		5		11	2
Wichita, Kans.	70,722		1		116		1		2	2
Wilkes-Barre, Pa.	76,776	24	5	2	2				2	3
Wilmington, Del.	94,265	38					1			
York, Pa.	51,656		3						2	

DIPHTHERIA, MEASLES, SCARLET FEVER, AND TUBERCULOSIS— Continued.

City Reports for Week Ended Mar. 3, 1917—Continued.

City.	Popula- tion as of July 1, 1916 (estimated by U. S. Census Bureau).	Total deaths from all causes.	Diphtheria.		Measles.		Scarlet fever.		Tuber- culosis.	
			Cases.	Deaths.	Cases.	Deaths.	Cases.	Deaths.	Cases.	Deaths.
From 25,000 to 50,000 inhabitants:										
Alameda, Cal.	27,732	4	1		5		8		1	1
Auburn, N. Y.	37,385	10	1		2		2			3
Brookline, Mass.	32,730	16	1		5		1		1	
Butler, Pa.	27,632	8	2						10	1
Butte, Mont.	43,425	31	5	1	23	1	2	1		
Chelsea, Mass.	46,192	17			3				6	2
Chicopee, Mass.	29,319	14	4				2		1	1
Cumberland, Md.	26,074	5			2					
Danville, Ill.	32,261	16			5				2	2
Davenport, Iowa	48,811		1				2			
Dubuque, Iowa	39,873		1		3		5		1	1
East Orange, N. J.	42,458	6	1		4		1		1	1
Elgin, Ill.	28,203	7					7			1
Everett, Mass.	39,235	7			1					
Everett, Wash.	55,486	2								
Fitchburg, Mass.	41,781	10	4	1	4		4		5	1
Galveston, Tex.	41,863	14								
Haverhill, Mass.	48,477		4		15		1		7	2
Jackson, Mich.	35,363	19	9	2	35		7		1	1
Kalamazoo, Mich.	48,886	18			2		1		3	
Kenosha, Wis.	31,576	13	4	1						1
Kingston, N. Y.	25,771	10							1	1
Knoxville, Tenn.	38,676		1		12				1	1
La Crosse, Wis.	31,677	17	1				6	1	1	1
Lexington, Ky.	41,097	25	3	1	48		1			3
Lima, Ohio.	35,384	15	1				4			1
Lorain, Ohio.	36,964		1		1		2		2	
Lynchburg, Va.	32,940	10			19				3	2
Madison, Wis.	30,699	3					8			
Medford, Mass.	26,234	8			42		3		1	
Montclair, N. J.	26,318	9			4					
Nashua, N. H.	27,327	9			11		2			
Newburgh, N. Y.	29,603	16	1						2	3
New Castle, Pa.	41,133		3		2					
Newport, Ky.	31,927	10	1						3	3
Newport, R. I.	30,108	8	1		2		3			2
Newton, Mass.	43,715	13	2		29		3		1	
Niagara Falls, N. Y.	37,353	19	3	1	1				7	
Norristown, Pa.	31,401	13								1
Ogden, Utah.	31,404	5	2		12		5			
Orange, N. J.	33,080	8	2		6		2			
Pasadena, Cal.	46,450	26			5					
Perth Amboy, N. J.	41,185						1		2	
Pittsfield, Mass.	38,629	12	1				1			
Portsmouth, Va.	39,651	11			23		3			2
Quincy, Ill.	36,798	9					2			5
Quincy, Mass.	38,136	14	1		1		1			1
Racine, Wis.	46,486	13	2						1	1
Roanoke, Va.	43,284	17			92	1	2		2	
San Jose, Cal.	38,902				4				1	
Steubenville, Ohio.	27,445	12								
Superior, Wis.	46,226	12	3				1			1
Taunton, Mass.	36,283	17	2		2				2	2
Topeka, Kan.	48,726	18	2		51		1		9	
Waltham, Mass.	30,570	9	1	1			1			
West Hoboken, N. J.	43,139		1				1		3	2
Wheeling, W. Va.	43,377	21			6				1	1
Williamsport, Pa.	33,809		1		22		2		9	
Wilmington, N. C.	29,892	15			20					2
Winston-Salem, N. C.	31,155	15			40		4		3	1
Zanesville, Ohio.	30,863	15								1
From 10,000 to 25,000 inhabitants:										
Ann Arbor, Mich.	15,010	13	1		2		6		3	2
Beaver Falls, Pa.	13,532				1					
Braddock, Pa.	21,685		1						1	
Cairo, Ill.	15,794	5			65					1
Canton, Mass.	13,075	3	1	1	1					
Coffeyville, Kans.	17,548		1		1					
Concord, N. H.	22,669	12	1		4		1			

¹Population Apr. 15, 1910; no estimate made.

DIPHTHERIA, MEASLES, SCARLET FEVER, AND TUBERCULOSIS— Continued.

City Reports for Week Ended Mar. 3, 1917—Continued.

City.	Popula- tion as of July 1, 1916 (estimated by U. S. Census Bureau).	Total deaths from all causes.	Diphtheria.		Measles.		Scarlet fever.		Tuber- culosis.	
			Cases.	Deaths.	Cases.	Deaths.	Cases.	Deaths.	Cases.	Deaths.
From 10,000 to 25,000 inhabit- ants—Continued.										
Galesburg, Ill.	24,276			1						
Harrison, N. J.	16,950			1					1	
Kearney, N. J.	23,539	9							1	1
Kokomo, Ind.	20,930	8	2		6		1		1	
Long Branch, N. J.	15,395	4	1		1					
Morristown, N. J.	13,284	4					1			
Muscatine, Iowa	17,500	2			18		1			2
Nanticoke, Pa.	23,126	8	2						2	
Newburyport, Mass.	15,243	4			20				1	
New London, Conn.	20,985	10			3		1			2
North Adams, Mass.	22,019	4							2	
Northampton, Mass.	19,926	9	1		8		2		1	1
Plainfield, N. J.	23,805	7	1							
Rocky Mount, N. C.	12,067	2			3				2	
Rutland, Vt.	14,831	5	1		4		7			
Sandusky, Ohio	20,193	10			2		2		1	
Saratoga Springs, N. Y.	13,821	4								
Steelton, Pa.	16,648	5			1				3	1
Wilkinsburg, Pa.	23,228	13	1							
Woburn, Mass.	15,969	3								

¹ Population Apr. 15, 1910, no estimate made.

FOREIGN.

AUSTRALIA.

Quarantine Stations Established—Queensland.

By proclamations published February 1, 1917, quarantine stations were established for vessels, persons, and cargoes at Thursday Island and Cape Pallarenda, Queensland.

CHINA.

Plague-Infected Rat—Hongkong.

During the week ended February 3, 1917, out of 2,072 rats examined at Hongkong, 1 rat was found plague infected.

CUBA.

Communicable Diseases—Habana.

Communicable diseases have been notified at Habana as follows:

Disease.	Feb. 11-20, 1917.		Feb. 21-28, 1917.		Remain- ing under treatment Feb. 28, 1917.
	New cases.	Deaths.	New cases.	Deaths.	
Diphtheria.....	3	1	5	1	2
Leprosy.....					10
Malaria.....	19		14		27
Measles.....	32		37	1	38
Paratyphoid fever.....					2
Scarlet fever.....	4	1			2
Smallpox.....					1
Typhoid fever.....	9	2	8		27
Varicella.....			5		4

CHOLERA, PLAGUE, SMALLPOX, TYPHUS FEVER, AND YELLOW FEVER.

Reports Received During the Week Ended Mar. 23, 1917.¹

CHOLERA.

Place.	Date.	Cases.	Deaths.	Remarks.
Philippine Islands:				
Manila.....	Jan. 28-Feb. 3....	4	3	Not previously reported; Cases, 2, Jan. 28-Feb. 3, 1917; Cases, 288; deaths, 201.
Provinces.....	Jan. 28-Feb. 3....	12	10	
Albay.....	do.....	41	21	
Capiz.....	do.....	5	5	
Cavite.....	do.....	72	50	
Leyte.....	do.....	4	1	
Mindanao.....	do.....	1	4	
Mindoro.....	do.....	6	3	
Misamis.....	do.....	7	8	
Negros Occidental.....	do.....	9	2	
Romblon.....	do.....	114	90	
Samar.....	do.....	17	7	
Sorsogon.....	do.....			

¹ From medical officers of the Public Health Service, American consuls, and other sources.

CHOLERA, PLAGUE, SMALLPOX, TYPHUS FEVER, AND YELLOW FEVER—Continued.

Reports Received During the Week Ended Mar. 23, 1917—Continued.

PLAGUE.

Place.	Date.	Cases.	Deaths.	Remarks.
Brazil:				
Bahia.....	Jan. 14-27.....	2	1	
China:				
Hongkong.....	Jan. 28-Feb. 3.....	1	1	
Egypt:				
Province—				Jan. 1-Feb. 1, 1917: Cases, 7;
Beni-Souef.....	Feb. 1.....	1		deaths, 2.
Hawaii:				
Paaulo.....	Mar. 7.....	1	1	
India.....				Jan. 7-13, 1917: Cases, 14,724;
				deaths, 11,251.

SMALLPOX.

Austria-Hungary:				
Hungary—				
Budapest.....	Dec. 31-Jan. 6.....	13	1	
Brazil:				
Bahia.....	Jan. 14-Feb. 10.....	3		
Rio de Janeiro.....	Jan. 28-Feb. 10.....	30	12	
Canada:				
Alberta—				
Lethbridge.....	Feb. 1-28.....	2		
British Columbia—				
Vancouver.....	Feb. 18-24.....	1		
China:				
Chungking.....	Jan. 14-27.....			Present.
Hongkong.....	Jan. 28-Feb. 3.....	63	53	
Kwantung Province—				
Chaoyang district.....	Jan. 21-27.....			Present. Vicinity of Swatow.
Mukden.....	Jan. 28-Feb. 10.....			Present.
Shanghai.....	Jan. 28-Feb. 3.....	1		
Tsingtao.....	Feb. 4-17.....	12		
Colombia:				
Espinal.....	Feb. 17.....			Present. Suburb of Cartagena.
Great Britain:				
Liverpool.....	Feb. 18-24.....	1	1	Contact, previous case.
Japan:				
Kobe.....	Feb. 12-18.....	9	3	
Mexico:				
Mexico City.....	Feb. 4-17.....	45		
New Zealand—				
Auckland.....	Feb. 4-10.....	4		
Philippine Islands:				
Manila.....	Jan. 21-Feb. 3.....	7		July 30-Dec. 30, 1916: Cases, 10.
Russia:				
Siberia—				
Vladivostok.....	Jan. 22-28.....	1		
Spain:				
Madrid.....	Jan. 1-31.....		35	
Valencia.....	Feb. 4-10.....	2		
Tunisia:				
Tunis.....	Feb. 3-9.....	3		

TYPHUS FEVER.

Austria-Hungary:				
Austria—				
Vienna.....	Jan. 14-20.....	3	2	
Greece:				
Saloniki.....	Dec. 19-25.....		5	
Mexico:				
Mexico City.....	Feb. 4-17.....	254		
Russia:				
Siberia—				
Vladivostok.....	Jan. 22-28.....	1		

CHOLERA, PLAGUE, SMALLPOX, TYPHUS FEVER, AND YELLOW FEVER—Continued.

Reports Received from Dec. 30, 1916, to Mar. 16, 1917.

CHOLERA.

Place.	Date.	Cases.	Deaths.	Remarks.
Chosen (Korea).....	Aug.-Dec. 29.....	1,998	
India:				
Bassein.....	Dec. 31-Jan. 6.....	1	
Bombay.....	Nov. 5-Dec. 23.....	13	12	
Do.....	Jan. 14-20.....	4	3	
Calcutta.....	Oct. 15-Dec. 33.....	161	Oct. 8-11, 1916: Cases, 2.
Do.....	Dec. 31-Jan. 6.....	20	
Madras.....	Nov. 5-Dec. 16.....	5	
Do.....	Dec. 31-Jan. 20.....	4	3	
Moulmein.....	Dec. 31-Jan. 6.....	1	
Rangoon.....	Nov. 26-Dec. 30.....	5	6	
Do.....	Dec. 31-Jan. 13.....	3	2	
Indo-China.....				June 1-July 31, 1916: Cases, 3,573; deaths, 2,578.
Provinces—				
Anam.....	June 1-30.....	446	367	
Do.....	July 1-Sept. 30.....	635	505	
Cambodia.....	June 1-30.....	13	9	
Do.....	July 1-Sept. 30.....	22	18	
Cochin-China.....	June 1-30.....	137	76	
Do.....	July 1-Sept. 30.....	98	59	
Kouang-Tschou-Wan.....	do.....	216	209	
Laos.....	June 1-30.....	40	29	
Do.....	July 1-Sept. 30.....	637	616	
Tonkin.....	June 1-30.....	1,276	775	
Do.....	July 1-Sept. 30.....	969	709	
Japan:				
Fukuoka.....	Jan. 19.....	33	
Nagasaki.....	Nov. 27-Dec. 3.....	9	4	
Osaka.....	Nov. 16-Dec. 25.....	23	57	Aug. 13-Dec. 25, 1916: Cases, 971; deaths, 754.
Do.....	Dec. 26-Jan. 25.....	19	10	Jan. 6-16, 1917: Cases, 9. Aug. 13, 1916-Jan. 25, 1917: Cases, 990; deaths, 611.
Taiwan Island—				
Keelung.....	Nov. 13-Dec. 23.....	5	7	
Taihoku.....	do.....	14	5	
Yokohama.....	Nov. 6-Dec. 3.....	5	3	
Districts.....	do.....	1	1	
Java:				
East Java.....	Oct. 14-17.....	5	3	
West Java.....				
Batavia.....	Nov. 17-Dec. 7.....	23	9	Nov. 17-Dec. 14, 1916: Cases, 135; deaths, 65.
Philippine Islands:				
Manila.....	Oct. 29-Dec. 30.....	201	70	Not previously reported: Cases, 49; deaths, 2.
Do.....	Dec. 31-Jan. 27.....	7	2	Oct. 29-Dec. 9, 1916: Cases, 4,191; deaths, 2,030. Dec. 17-30, 1916: Cases, 282; deaths, 188. Dec. 31, 1916-Jan. 27, 1917: Cases, 486; deaths, 372.
Provinces.....				
Albay.....	Oct. 29-Dec. 9.....	246	147	
Do.....	Dec. 17-30.....	20	10	
Do.....	Dec. 31-Jan. 27.....	35	30	
Antique.....	Nov. 18-25.....	8	7	
Do.....	Dec. 31-Jan. 6.....	2	4	
Bataan.....	Oct. 29-Dec. 9.....	93	77	
Do.....	Dec. 17-23.....	2	2	
Do.....	Dec. 31-Jan. 6.....	2	3	
Batangas.....	Oct. 29-Nov. 18.....	1	1	
Bohol.....	Oct. 29-Dec. 9.....	46	18	
Do.....	Dec. 17-23.....	1	
Bulacan.....	Oct. 29-Dec. 9.....	96	67	
Do.....	Dec. 17-23.....	19	6	
Camarines.....	Oct. 29-Dec. 9.....	61	37	
Capiz.....	do.....	45	34	
Do.....	Dec. 17-30.....	27	23	
Do.....	Dec. 31-Jan. 27.....	35	24	
Cavite.....	Oct. 29-Dec. 9.....	156	113	
Do.....	Dec. 17-30.....	24	13	
Do.....	Dec. 31-Jan. 27.....	34	22	
Cebu.....	Dec. 24-30.....	12	6	
Do.....	Jan. 7-13.....	4	2	
Iloilo.....	Oct. 29-Dec. 9.....	237	148	
Do.....	Dec. 17-30.....	37	31	
Do.....	Dec. 31-Jan. 27.....	49	42	
Laguna.....	Nov. 2-25.....	12	10	
Leyte.....	Oct. 29-Dec. 9.....	127	98	
Do.....	Dec. 17-30.....	90	62	
Do.....	Dec. 31-Jan. 27.....	165	134	
Mashate.....	Dec. 17-23.....	8	2	
Mindanao.....	Jan. 14-20.....	21	14	
Mindoro.....	Dec. 31-Jan. 13.....	7	6	

CHOLERA, PLAGUE, SMALLPOX, TYPHUS FEVER, AND YELLOW FEVER—Continued.

Reports Received from Dec. 30, 1916, to Mar. 16, 1917—Continued.

CHOLERA—Continued.

Place.	Date.	Cases.	Deaths.	Remarks.
Philippine Islands—Continued.				
Provinces—Continued.				
Misamis.....	Oct. 29-Dec. 9.....	126	79	
Do.....	Dec. 17-30.....	17	12	
Do.....	Jan. 1-27.....	13	10	
Negros Occidental.....	Oct. 29-Dec. 9.....	910	553	
Do.....	Dec. 24-30.....	11	5	
Do.....	Jan. 7-27.....	42	36	
Pampanga.....	Dec. 3-9.....	4	3	
Do.....	Dec. 17-23.....	6	5	
Do.....	Dec. 31-Jan. 6.....	1	1	
Rizal.....	Oct. 29-Dec. 9.....	27	14	
Do.....	Dec. 17-30.....	4	—	
Do.....	Dec. 31-Jan. 27.....	2	—	
Samar.....	Nov. 5-18.....	13	10	
Do.....	Dec. 31-Jan. 6.....	51	33	
Sorsogon.....	Oct. 29-Dec. 2.....	131	71	
Do.....	Dec. 17-23.....	1	2	
Do.....	Jan. 21-27.....	23	11	
Tayabas.....	Nov. 5-18.....	1	1	
Zambales.....	Oct. 29-Dec. 2.....	7	1	
Straits Settlements:				
Singapore.....	Oct. 22-28.....	2	2	
Turkey in Asia				
Aleppo.....	Dec. 9-15.....	—	1	Sept. 22-Dec. 12, 1916: Cases, 258;
Bagdad.....	Nov. 6-30.....	17	6	deaths, 117. July 14-Dec. 25,
Beirut.....	Dec. 7-12.....	2	1	1916: Cases, 9,542; deaths, 4,887.
Tarsus.....	Nov. 7.....	1	1	
Turkey in Europe:				
Constantinople.....	Oct. 1-Nov. 17....	8	1	

PLAGUE.

Brazil:				
Bahia.....	Nov. 5-Dec. 16....	15	9	Jan. 1-Nov. 11, 1916: Cases 14;
Do.....	Jan. 7-13.....	1	1	deaths, 7. Nov. 5-11: Cases, 4;
Joazeiro.....	—	—	deaths, 2.
.....	June 1-Nov. 6 1916: Cases, 67;
.....	deaths, 51.
Ceylon:				
Colombo.....	Oct. 28-Dec. 30....	50	30	July 23-29 1916: Cases, 9;
Do.....	Dec. 31-Jan. 6.....	2	2	deaths, 8.
Chile:				
Tocopilla.....	Sept. 12.....	1	1	
China:				
Amoy, vicinity.....	Nov. 19-Dec. 2.....	—	—	Present.
Hongkong.....	Dec. 24-30.....	1	1	
Do.....	Jan. 21-27.....	23	11	Present in vicinity.
Kansu Province—	
Taochow.....	Oct. 1-24.....	—	20	Pneumonic. Reported present
.....	in other localities in Province.
Ecuador				
Duran.....	Oct. 1-31.....	1	—	Sept. 1-Nov. 30, 1916: Cases, 156;
Guayaquil.....	Sept. 1-30.....	21	7	deaths, 57.
Do.....	Oct. 1-31.....	43	13	
Do.....	Nov. 1-30.....	88	35	
Milagro.....do.....	1	—	
Nobol.....	Oct. 1-31.....	1	1	
Santa Rosa.....	Sept. 1-30.....	1	1	
Egypt				
Alexandria.....	Nov. 12-Dec. 25....	4	3	Jan. 1-Dec. 30, 1916: Cases, 1,702;
Port Said.....	Dec. 11.....	1	—	deaths, 828. Jan. 1-25 1917:
Do.....	Jan. 18-25.....	4	1	Cases, 6; deaths, 2.
Provinces—				
Fayoum.....	Jan. 24.....	1	—	1 case on s. s. Proton, arrived
Minieh.....	Jan. 25.....	1	1	Nov. 16, 1916, from Sidi Barand
.....	and Sollum.
India				
Bassein.....	Oct. 22-Dec. 30....	—	7	Oct. 15-Dec. 23, 1916: Cases,
Do.....	Dec. 31-Jan. 6.....	—	1	89,512; deaths, 67,068. Dec. 31,
.....	1916-Jan. 6, 1917: Cases, 15,763;
.....	deaths, 12,287.

CHOLERA, PLAGUE, SMALLPOX, TYPHUS FEVER, AND YELLOW FEVER—Continued.

Reports Received from Dec. 30, 1916, to Mar. 16, 1917—Continued.

PLAGUE—Continued.

Place.	Date.	Cases.	Deaths.	Remarks.	
India—Continued.					
Bombay.....	Nov. 5-Dec. 30....	73	59	Oct. 8-14, 1916: Cases, 13; deaths, 7. Received out of date. Original report lost on s. s. Arabia.	
Do.....	Dec. 31-Jan. 20....	33	27		
Karachi.....	Oct. 23-Dec. 23....	3	2		
Do.....	Dec. 24-30.....	1	1	Oct. 8-14, 1916: Cases, 1; deaths, 1.	
Do.....	Dec. 31-Jan. 6....	1	1		
Madras.....	Nov. 19-Dec. 16....	6	3		
Do.....	Dec. 30-Jan. 6....	3	2	Oct. 8-14, 1916: Cases, 534; deaths, 353. Sept. 17-23, 1916: Cases, 429; deaths, 280.	
Madras Presidency.....	Nov. 5-Dec. 16....	4,003	2,677		
Do.....	Dec. 31-Jan. 20....	2,427	1,646		
Mandalay.....	Oct. 28-Dec. 30....	3	Oct. 1-7, 1916: Cases, 9; deaths, 9.	
Moulmein.....	Dec. 3-9.....	1		
Prome.....	Oct. 22-Dec. 30....	177		
Do.....	Dec. 31-Jan. 6....	22	June 1-30, 1916: Cases, 75; deaths, 5. July 1-Sept. 30, 1916: Cases, 164; deaths, 98.	
Rangoon.....	Oct. 28-Dec. 30....	43	39		
Do.....	Dec. 31-Jan. 13....	29	24		
Toungoo.....	Oct. 22-Dec. 30....	12	Aug. 26-Dec. 1, 1916: Cases, 101; deaths, 101.	
Do.....	Dec. 31-Jan. 6....	1		
Indo-China—					
Provinces—					
Anam.....	June 1-30.....	27	10	Aug. 26-Dec. 1, 1916: Cases, 101; deaths, 101.	
Do.....	July 1-Sept. 30....	51	32		
Cambodia.....	June 1-30.....	17	16		
Do.....	July 1-Sept. 30....	33	31	Total, Oct. 23-Nov. 12, 1916: Cases, 24; deaths, 13. On two adjoining farms.	
Cochin-China.....	June 1-30.....	31	18		
Do.....	July 1-Sept. 30....	53	19		
Kouang-Tcheou-Wan.....	July 1-31.....	27	6	Total, Oct. 23-Nov. 12, 1916: Cases, 24; deaths, 13. On two adjoining farms.	
Saigon.....	Nov. 6-Dec. 17....	9	3		
Japan:					
Nagoya.....	Dec. 10-16.....	2	Total, Oct. 23-Nov. 12, 1916: Cases, 24; deaths, 13. On two adjoining farms.	
Yokkaichi.....	Nov. 12-Dec. 16....	32	12		
Java:					
East Java.....					
Djocja Residency.....	Nov. 4-17.....	1	1	Total, Oct. 23-Nov. 12, 1916: Cases, 24; deaths, 13. On two adjoining farms.	
Kediri Residency.....	Aug. 26-Nov. 3....	18	16		
Madioen Residency.....	do.....	8	8		
Paseroean Residency.....	do.....	3	3	Total, Oct. 23-Nov. 12, 1916: Cases, 24; deaths, 13. On two adjoining farms.	
Surabaya Residency.....	Aug. 26-Dec. 1....	30	31		
Surakarta Residency.....	do.....	24	24		
Mid-Java—					
Samarang.....	do.....	1	1	Total, Oct. 23-Nov. 12, 1916: Cases, 24; deaths, 13. On two adjoining farms.	
Siam:					
Bangkok.....	Oct. 22-Dec. 23....	11	9		
Straits Settlements:					
Singapore.....	Oct. 22-Dec. 30....	7	7	Total, Oct. 23-Nov. 12, 1916: Cases, 24; deaths, 13. On two adjoining farms.	
Do.....	Dec. 31-Jan. 6....	3	2		
Union of South Africa:					
Cape of Good Hope State—				Total, Oct. 23-Nov. 12, 1916: Cases, 24; deaths, 13. On two adjoining farms.	
Uitenhage district.....	Oct. 31-Nov. 12....	2	2		
Transvaal—					
Potchefstroom district.....	Dec. 21-Jan. 14....	12	11		

SMALLPOX.

Australia:				
New South Wales—				
Coonamble.....	Dec. 8.....	1	
Austria-Hungary:				
Austria—				
Vienna.....	Nov. 12-Dec. 9....	8	1	
Hungary—				
Budapest.....	Nov. 5-Dec. 23....	73	2	
Do.....	Jan. 14-20.....	5	2	
Brazil:				
Bahia.....	Nov. 12-Dec. 23....	5	
Do.....	Jan. 7-13.....	1	
Rio de Janeiro.....	Nov. 12-Dec. 30....	50	12	
Do.....	Dec. 31-Feb. 5....	53	12	
Canada:				
British Columbia—				
Victoria.....	Feb. 11-17.....	1	
Manitoba—				
Winnipeg.....	do.....	3	

CHOLERA, PLAGUE, SMALLPOX, TYPHUS FEVER, AND YELLOW FEVER—Continued.

Reports Received from Dec. 30, 1916, to Mar. 16, 1917—Continued.

SMALLPOX—Continued.

Place.	Date.	Cases.	Deaths.	Remarks.
Canada—Continued.				
Ontario—				
Sarnia.....	Jan. 28-Feb. 10....	3		
Toronto.....	do.....	2		
Ceylon:				
Colombo.....	Dec. 31-Jan. 6....	1		
China:				
Amoy.....	Oct. 31-Dec. 9....			Present. Dec. 10-16, 1916: Cases,
Antung.....	Jan. 8-14.....	2	1	3.
Canton.....	Nov. 1-Dec. 20....		11	
Chungking.....	Oct. 28-Dec. 30....			Present.
Do.....	Dec. 31-Jan. 13....			Do.
Dairen.....	Nov. 5-Dec. 30....	63	8	
Do.....	Dec. 31-Jan. 20....	22	8	In vicinity, Jan. 11-20, 1917;
				1 case.
Foochow.....	Oct. 29-Dec. 16....			Present.
Harbin.....	Nov. 6-Dec. 17....	3		
Hongkong.....	Oct. 28-Dec. 30....	349	243	
Do.....	Dec. 31-Jan. 27....	261	221	Present in vicinity.
Mukden.....	Dec. 9-30.....			Present.
Do.....	Dec. 31-Jan. 27....			Do.
Nanking.....	Nov. 12-25.....			Do.
Tientsin.....	Dec. 17-30.....	1	1	
Do.....	Jan. 28-Feb. 3....	2		
Tsingtao.....	Dec. 1-9.....	3		
Do.....	Dec. 28-Jan. 27....	32		
Cuba:				
Casa Blanca.....	Jan. 12.....	1		Vicinity of Habana. Case landed
				Jan. 1, 1917, from s. s. Alfonso
				XII, from Santander, Spain.
Enerueijada.....	Jan. 10.....	1		In Santa Clara Province. Case
				landed from s. s. Montevideo
				from Barcelona, via Las Pal-
				mas, Canary Islands, and Porto
				Rico; arrived at Habana Jan
				6, 1917.
Guanabacoa.....	Jan. 9.....	1		Vicinity of Habana. Case landed
				from s. s. Montevideo.
Habana.....	Jan. 10-20.....	2		At Mariel quarantine station.
				From s. s. Montevideo.
Ecuador:				
Guayaquil.....	Nov. 1-30.....	10	1	
Egypt:				
Alexandria.....	Dec. 25-31.....		3	
Do.....	Jan. 8-14.....	1	1	
Cairo.....	June 11-July 1....	50	20	
Do.....	July 2-Oct. 21....	60	20	
Port Said.....	June 11-17.....	1	1	
Do.....	Aug. 20-Sept. 9....	2	1	
France:				
Marseille.....	Oct. 1-Dec. 31....		16	
Paris.....	Dec. 17-23.....	1		
Germany:				
Bremen.....	Dec. 31-Jan. 20....	2		
Hamburg, district.....	do.....	52		
Great Britain:				
Liverpool.....	Feb. 4-10.....	1		
Greece:				
Athens.....	Jan. 1-15.....		5	
Hawaii:				
Honolulu.....	Jan. 9.....	1		From s. s. Tenyo Maru from
				oriental ports.
Do.....	Jan. 21.....	1		From s. s. Ecuador from Hong-
				kong.
India:				
Bombay.....	Dec. 10-30.....	5	1	Oct. 8-14, 1916: Cases, 3; deaths,
Do.....	Dec. 31-Jan. 20....	19	5	3. Received out of date. Orig-
Calcutta.....	Nov. 5-Dec. 2....		2	inal report lost on s. s. Arabia.
Karachi.....	Dec. 31-Jan. 13....	2		
Madras.....	Nov. 5-Dec. 16....	22	8	
Do.....	Dec. 31-Jan. 20....	33	12	
Moulmein.....	Oct. 28-Nov. 4....		4	
Rangoon.....	Oct. 28-Dec. 30....	17	1	
Do.....	Dec. 31-Jan. 6....		1	

CHOLERA, PLAGUE, SMALLPOX, TYPHUS FEVER, AND YELLOW FEVER—Continued.

Reports Received from Dec. 30, 1916, to Mar. 16, 1917—Continued.

SMALLPOX—Continued.

Place.	Date.	Cases.	Deaths.	Remarks.
Indo-China				June 1-30, 1916: Cases, 53; deaths, 11. July 1-Sept. 30, 1916: Cases, 157; deaths, 83.
Provinces—				
Anam.....	June 1-30.....	4	1	
Do.....	July 1-Sept. 30.....	22	10	
Cambodia.....	June 1-30.....	11	4	
Do.....	July 1-Sept. 30.....	14	6	
Cochin-China.....	June 1-30.....	19	5	
Do.....	July 1-Sept. 30.....	81	35	
Laos.....	Aug. 1-Sept. 30.....	19	16	
Tonkin.....	June 1-30.....	19	1	
Do.....	July 1-Aug. 31.....	11	5	
Saigon.....	Nov. 6-Dec. 24.....	27	7	
Japan:				
Kobe.....	Nov. 28-Dec. 10.....	4	1	
Do.....	Jan. 1-Feb. 11.....	40	9	
Osaka.....	Jan. 22-Feb. 5.....	90	11	
Java:				
East Java.....				Sept. 16-Dec. 1, 1916: Cases, 82; deaths, 2.
Surabaya.....	Nov. 4-10.....	1		
Mid-Java.....				Sept. 16-Dec. 1, 1916: Cases, 161; deaths, 18.
Samarang.....	Nov. 4-10.....	3		
West Java.....				Sept. 29-Dec. 14, 1916: Cases, 366; deaths, 56.
Batavia.....	Sept. 29-Dec. 14.....	48	8	
				Present; also present in vicinity.
Mexico:				
Durango.....	Feb. 17.....			
Mexico City.....	Dec. 10-30.....	20		
Do.....	Dec. 31-Jan. 6.....	6		
Nuevo Laredo.....	Dec. 10-30.....	1		
Portugal:				
Lisbon.....	Nov. 19-Dec. 2.....	6		
Portuguese East Africa:				
Lourenco Marques.....	Sept. 1-30.....		1	
Russia:				
Archangel.....	Nov. 25-Dec. 29.....	6	1	
Moscow.....	Oct. 16-Dec. 18.....	43	12	
Petrograd.....	Oct. 8-Nov. 25.....	96	31	Nov. 13-25, 1916: Cases, 35; deaths, 8.
South Africa:				
Johannesburg.....	Nov. 26-Dec. 2.....	15		
Spain:				
Cadiz.....	Nov. 1-Dec. 31.....		3	
Madrid.....	do.....		144	
Malaga.....	Sept. 1-Nov. 30.....		15	Jan. 1-Dec. 31, 1916: Deaths, 405.
Seville.....	Nov. 1-30.....		22	
Valencia.....	Nov. 19-Dec. 23.....	5	1	
Do.....	Jan. 14-20.....	1		
Straits Settlements:				
Penang.....	Oct. 28-Dec. 30.....	16	3	
Singapore.....	Nov. 19-Dec. 30.....	3	2	
Switzerland:				
Basel.....	Nov. 5-11.....	1		
Do.....	Dec. 31-Feb. 3.....	13		
Tunisia:				
Tunis.....	Nov. 25-Dec. 15.....	51	27	
Do.....	Dec. 30-Feb. 2.....	48	13	
Turkey in Asia:				
Trebizond.....	Nov. 11-Dec. 30.....	1	1	
Union of South Africa:				
Johannesburg.....	Sept. 10-Dec. 30.....	45		
Do.....	Dec. 31-Jan. 13.....	1		
On vessel:				
S. S. Nippon Maru.....	Jan. 22.....	2		Landed at Yokohama quarantine.
Do.....	Jan. 24-Feb. 3.....	9	3	En route to Honolulu. Vessel from oriental ports.

TYPHUS FEVER.

Argentina:			
Rosario.....	Nov. 1-30.....		1
Austria-Hungary:			
Austria.....			
Vienna.....	Nov. 5-Dec. 30.....	21	2
Do.....	Dec. 31-Jan. 6.....	3	

CHOLERA, PLAGUE, SMALLPOX, TYPHUS FEVER, AND YELLOW FEVER—Continued.

Reports Received from Dec. 30, 1916, to Mar. 16, 1917—Continued.

TYPHUS FEVER—Continued.

Place.	Date.	Cases.	Deaths.	Remarks.
Austria-Hungary—Continued.				
Hungary—				
Budapest.....	Nov. 5-Dec. 30....	3	1	
Do.....	Jan. 14-20.....	7	1	
Belgium:				
Ghent.....	Oct. 29-Nov. 4.....		1	
Liège.....	do.....		1	
China:				
Antung.....	Nov. 27-Dec. 10....	6		
Do.....	Jan. 15-21.....	2		
Hankow.....	Nov. 12-18.....	1		
Tientsin.....	Oct. 29-Nov. 4.....	1		
Tsingtao.....	Dec. 28-Jan. 27....	3		
Cuba:				
Santiago.....	Dec. 7-13.....	1	1	
Egypt:				
Alexandria.....	Nov. 12-Dec. 31....	28	12	Nov. 19-23, 1916: 1 case; Dec. 17-23, 1916: Cases, 4.
Do.....	Jan. 1-Feb. 4.....	73	17	
Cairo.....	June 11-July 1.....	275	142	
Do.....	July 2-Oct. 23.....	285	149	
Port Said.....	June 11-17.....	20	9	
Do.....	July 2-Oct. 14.....	10	8	
Germany:				
Berlin.....	Oct. 15-Dec. 23....		7	
Bremen.....	Oct. 22-Dec. 30....	1	3	
Do.....	Dec. 31-Jan. 13....	1	2	
Frankfort-on-Main.....	Nov. 12-18.....		1	
Königsberg.....	Nov. 12-Dec. 23....	5	5	
Do.....	Dec. 31-Jan. 20....	5	2	
Nuremberg.....	Oct. 29-Nov. 11....	3		
Stettin.....	Jan. 21-27.....		1	
Great Britain:				
Cork.....	Jan. 7-Feb. 3.....	1	1	
Glasgow.....	Dec. 3-30.....	4		
Do.....	Jan. 7-13.....		1	
Greece:				
Saloniki.....	Nov. 7-Dec. 18....		31	
Java:				
East Java.....				Sept. 16-Nov. 3, 1916: Cases, 9.
Mid-Java.....				Sept. 16-Dec. 1, 1916: Cases, 65;
Samarang.....	Nov. 4-Dec. 1.....	10		deaths, 7.
West Java.....				Sept. 29-Dec. 14, 1916: Cases, 159;
Batavia.....	Sept. 29-Dec. 7....	124	11	deaths, 12.
Mexico:				
Aguascalientes.....	Dec. 22.....			Epidemic.
Ciudad Juarez.....				July, 1916-Feb. 5, 1917: Cases, 100 (estimated).
Durango.....	Dec. 12.....			Present.
Do.....	Jan.-Feb.....			Present. Estimated deaths
Mexico City.....	Dec. 3-30.....	835		daily, about 25. Present
Do.....	Dec. 31-Jan. 13....	658		throughout year 1916.
Nuevo Laredo.....	Dec. 10-16.....	4		July 1-Dec. 16, 1916: Cases, 23.
Netherlands:				
Rotterdam.....	Nov. 26-Dec. 30....	8		
Russia:				
Archangel.....	Nov. 25-Dec. 29....	29	9	
Moscow.....	Oct. 16-Nov. 25....	55	4	
Petrograd.....	Oct. 8-Dec. 2.....	139	42	
Spain:				
Madrid.....	Nov. 1-Dec. 31....		3	Jan. 1-Dec. 31, 1916: Deaths, 35.
Sweden:				
Stockholm.....	Nov. 28-Dec. 4.....	1		
Do.....	Dec. 31-Jan. 6.....	3		
Switzerland:				
Zurich.....	Dec. 3-9.....	1		
Do.....	Jan. 7-13.....	1		
Tunisia:				
Tunis.....	Dec. 16-22.....	1		
Turkey in Asia:				
Haifa.....	Oct. 16-22.....	1		
Trebizond.....	Dec. 17-30.....	3	3	

CHOLERA, PLAGUE, SMALLPOX, TYPHUS FEVER, AND YELLOW FEVER—Continued.

Reports Received from Dec. 30, 1916, to Mar. 16, 1917—Continued.

YELLOW FEVER.

Place.	Date.	Cases.	Deaths.	Remarks.
Brazil:				
Espirito Santo, State.....	Jan. 27-Feb. 2.....	11	4	
Ecuador:				
Babaheyo.....	Nov. 1-30.....	1	1	
Chobo.....	do.....	1		
Duran.....	Oct. 1-31.....	1		
Guayaquil.....	Sept. 1-30.....	17	5	
Do.....	Oct. 1-31.....	15	12	
Do.....	Nov. 1-30.....	6	3	
Milagro.....	Sept. 1-30.....	1		
	Oct. 1-31.....	2	1	
Gold Coast.....				In 1915: Cases, 2; deaths, 2. European and native.

×