

U.S. DEPARTMENT OF HEALTH  
AND HUMAN SERVICES  
Patricia Roberts Harris, *Secretary*

PUBLIC HEALTH SERVICE  
Julius B. Richmond, MD  
*Assistant Secretary for Health  
and Surgeon General*

HEALTH RESOURCES  
ADMINISTRATION  
Henry A. Foley, PhD, *Administrator*

PUBLIC HEALTH REPORTS  
(USPS 324-990)  
Marian Priest Tebben, *Editor*  
Eather C. Gould, *Assistant Executive  
Editor*  
Virginia M. Larson, *Managing Editor*  
Frank Harding, *Art Director*  
Sandra Rogers, *Art Production*

Opinions expressed are the authors'  
and do not necessarily reflect the  
views of *Public Health Reports* or  
the Health Resources Administration.  
Trade names are used for identifica-  
tion only and do not represent an  
endorsement by the Health Resources  
Administration.

**Address correspondence to:**  
Editor, Public Health Reports  
Room 10-44 Center Bldg.  
3700 East-West Highway  
Hyattsville, Md. 20782

**Subscription Information**  
To subscribe to Public Health Re-  
ports, send check or money order—  
\$3 per single issue, domestic, \$3.75  
foreign; per year (6 issues) \$15  
domestic, \$18.75 foreign—to Super-  
intendent of Documents, U.S. Gov-  
ernment Printing Office, Washington,  
D.C. 20402. All correspondence about  
paid subscriptions (for example, re  
change of address or failure to  
receive an issue) should also be  
addressed to the Superintendent of  
Documents.

**Photo credits**  
Gibson family album—cover; page 204  
Pharmacist Gibson and Dr.  
Brinckerhoff; page 207 Survey and  
construction team, house under  
construction, house completed

Bishop Museum of Honolulu—page  
205, page 207 Leprosy  
Investigation Station

"The United States Public Health  
Service 1978-1950" by Ralph Chester  
Williams, Commissioned Officers  
Association of the United States  
Public Health Service, Washington,  
D.C., 1951—page 203 Dr. Wyman,  
page 204 Dr. Cofer

Archives of the State of Hawaii—  
page 208

Scott Michael—page 209

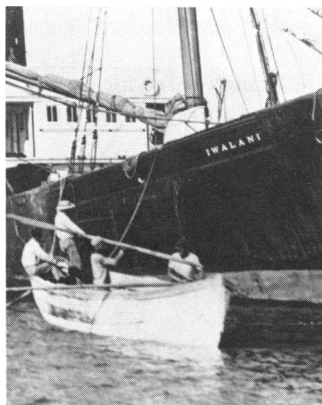
Robert Wood Johnson Foundation—  
page 298

National Institutes of Health—page  
301



## Programs, Practices, People

- 295 Medical College of Virginia researchers seek volunteers poisoned by pesticides
- 295 Information campaign encourages second opinion on surgery
- 296 NIDR offers 3 films to aid in implementing self-applied fluoride programs in schools
- 297 University of Minnesota gets Kellogg grant for pharmacy training program
- 297 WW I veterans eligible for care at VA outpatient clinics for non-service connected disabilities
- 297 Utah environmental conference: call for abstracts
- 297 Audiovisual package gives consumers the picture on X-ray protection
- 298 Childhood tooth decay study launched by NIDR
- 298 Free film available on preventive dental care
- 299 Current estimates from the Health Interview Survey: United States—1978
- 299 Bibliographies available from National Library of Medicine
- 299 General clinical research centers directory revised
- 299 New York State campaign to establish blood pressure programs at worksites
- 300 Protection for human subjects testing medical devices for their safety and effectiveness
- 300 Hypertension task force issues 9-volume report
- 301 Infantile diarrhea virus grown
- 301 Reports on public health programs and expenditures of official State and Territorial health agencies, 1978
- 301 Education notes
- 302 Publications
- PHR bookshelf (cover 3)



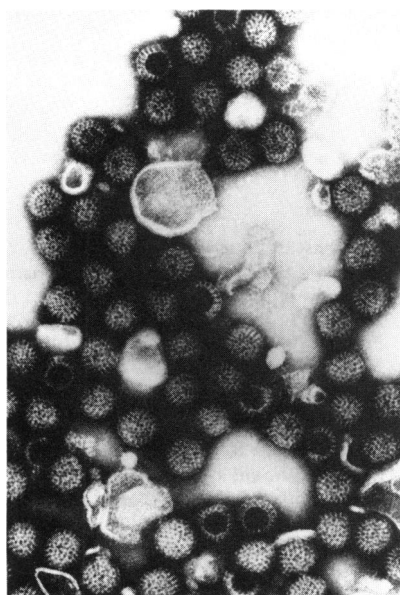
Cover: Unloading supplies from the *Iwalani* for the Leprosy Investigation Station on Molokai. Every stick of lumber and piece of equipment had to be floated ashore or loaded into small boats from the deck of the interisland steamers. The research station, authorized by Congress in 1905, was fully equipped and opened by 1909, but closed only 4 years later. The article beginning on the facing page tells of the failure of this early research enterprise.

and Salt and Water (NIH Publication No. 1630).

Vol. 9. *Therapy, Pregnancy, and Obesity* (NIH Publication No. 1631) contains reports on special topics not covered by subgroups.

Requests for single copies should be made by postcard only (specifying volumes desired) to Department RG, Public Inquiries and Reports Branch, National Heart, Lung, and Blood Institute, Bldg. 31, Rm. 4A-21, Bethesda, Md. 20205.

## Infantile Diarrhea Virus Grown



*Electron micrograph of human rotavirus in a fecal specimen magnified 224,840 times. Scientists at the National Institute of Allergy and Infectious Diseases have succeeded in growing the virus that has been identified as a major cause of serious diarrhea in infants and young children throughout the world. This accomplishment may be an important step toward developing a vaccine to prevent serious diarrheal diseases. It will enable investigators to study the connection between the virus's genetic structure and its ability to cause disease. Armed with this information, they may be able to create a weakened virus that could be used as an effective vaccine. Since the virus was first identified in 1973 by Australian scientists, studies in many parts of the world have revealed that rotaviral infection is responsible for about 50 percent of serious diarrheal diseases in hospitalized infants and young children.*

## Reports on Public Health Programs and Expenditures of Official State and Territorial Health Agencies, 1978

■ The National Public Health Program Reporting System (NPHPRS) of the Association of State and Territorial Health Officials (ASTHO) has recently published two reports detailing the public health programs and expenditures of the nation's official State and Territorial health agencies in fiscal year 1978. NPHPRS is the only source of comprehensive, uniform, detailed data about the activities of these agencies.

The fiscal year 1978 "Inventory of Programs and Expenditures of State and Territorial Health Agencies" includes complete listings of programs and program expenditures of each State and Territorial health agency, as reported to NPHPRS. Program expenditures of Federal Comprehensive Public Health Services grants are listed also.

The fiscal year 1978 "Comprehensive NPHPRS Report—Services, Expenditures, and Programs of State and Territorial Health Agencies" provides detailed information about the expenditures, source of funds, and the services provided by the programs of State health agencies. The text is national in scope; data by State are presented in appendix tables.

Following are some highlights from the reports:

• The nation's official State and Territorial health agencies spent a total of \$3.3 billion for their public health programs in fiscal year 1978.

• Fifty-five percent of the funding for these agencies in fiscal year 1978 came from State sources; 35 percent from Federal grants and contracts; and 10 percent from local sources, fees and reimbursements, and other sources.

• Seventy-two percent of the expenditures of the agencies was for personal health programs, including the operation of institutions; 9 percent was for health resources programs; 7 percent was for environmental health programs; 6 percent was for general administration and services; and 4 percent was for laboratory programs.

• In fiscal year 1978, these agencies provided personal health services to an estimated 64 million persons—3 of every 10 persons in the United States.

• An estimated 39 percent of the agencies' expenditures in fiscal year 1978 was for preventive health services.

*Inventory of Programs and Expenditures of State and Territorial Health Agencies, Fiscal Year 1978 (ASTHO-NPHPRS Publication No. 46). Comprehensive NPHPRS Report—Services, Expenditures and Programs of State and Territorial Health Agencies, Fiscal Year 1978 (ASTHO-NPHPRS Publication No. 47). Copies available from Ronald E. Whorton, Director, ASTHO-NPHPRS, 962 Wayne Ave., Suite 403, Silver Spring, Md. 20910 or call (301) 589-2520.*

## education notes

**Thirteenth Miles International Symposium.** The Thirteenth Miles International Symposium, entitled "Nutritional Factors: Modulating Effects on Metabolic Processes," will be held at the Johns Hopkins Medical Institutions, June 18–20, 1980. The tentative titles for the symposium sessions are Variability of Responses to the Nutritional Environment, Factors Affecting Efficiency of Energy Use, Nutrition and

Brain Function, New Approaches to the Control of the Nitrogen Economy, Immunocompetence and Nutritional Status, and Fatty Acid-Prostaglandin (Autacoid) Relationships.

Further information regarding the symposium may be obtained from Edward G. Bassett, PhD, Symposium Coordinator, Miles Laboratories, Inc., P.O. Box 40, Elkhart, Ind. 46515; telephone (219) 264-8460.

# publications

## FEDERAL

Responses of Canadian Physicians to the Introduction of Universal Medical Care Insurance. *NCHSR Research Digest Series. DHEW Publication No. (PHS) 80-3229. February 1980; 21 pages.*

Effects of the 1974-75 Recession on Health Care for the Disadvantaged. *NCHSR Research Summary Series. DHEW Publication No. (PHS) 78-3248. January 1980; 86 pages.*

Sharing Health Care Costs. *NCHSR Research Proceedings Series. DHEW Publication No. (PHS) 79-3256. February 1980; 31 pages.*

Health Facility Reuse, Retrofit, and Reconfiguration. *NCHSR Research Proceedings Series. DHEW Publication No. (PHS) 79-3257. February 1980; 102 pages.*

Emergency Medical Services Research Methodology. Workshop 2. *NCHSR Research Proceedings Series. DHEW Publication No. (PHS) 79-3225-2. 1980; 87 pages.*

Small Area Estimation: an Empirical Comparison of Conventional and Synthetic Estimators for States. *DHEW Publication No. (PHS) 80-1356, Series 2, No. 82. December 1979; 19 pages.*

Use Habits Among Adults of Cigarettes, Coffee, Aspirin, and Sleeping Pills, United States, 1976. *DHEW Publication No. (PHS) 80-1559, Series 10, No. 131. October 1979; 48 pages.*

Trends in Breast Feeding Among American Mothers. *DHEW Publication No.*

*(PHS) 79-1979, Series 23, No. 3. November 1979; 39 pages.*

An Assessment of Bilingual/Bicultural Awareness Activities in Health Professions Schools. *DHEW Publication No. (HRA) 80-10. December 1979; 211 pages.*

An Assessment of Admissions Criteria for Bilingual/Bicultural Applicants to Health Professions Schools. *DHEW Publication No. (HRA) 80-11. December 1979; 227 pages.*

Dietary Intake Source Data, United States, 1971-74. *DHEW Publication No. (PHS) 79-1221. September 1979.*

General Clinical Research Centers. A Research Resources Directory. *DHEW Publication No. (NIH) 80-1433. Revised 1979; 86 pages.*

Your Children and Sex (Changes and Choices). *DHEW Publication No. (HSA) 80-5647. 1980; 15 pages.*

Sex and You (Changes). *DHEW Publication No. (HSA) 80-5648. 1980; 16 pages.*

You and Sex (Choices). *DHEW Publication No. (HSA) 80-5649. 1980; 16 pages.*

Inside the Public Health Service. A Guide to its History, Mission, Organization, and Initiatives. *Public Health Service, Office of Management, Office of Organization and Management Systems. February 1980; 53 pages.*

Family Planning, Contraception, Voluntary Sterilization and Abortion: an

Analysis of Laws and Policies in the United States, Each State and Jurisdiction (as of October 1, 1976, with 1978 addenda). A report of the Office for Family Planning. *DHEW Publication No. (HSA) 79-5623. 1978; 380 pages (Stock No. 017-031-00021-0).*

Second Symposium on Epidemiology and Cancer Registries in the Pacific Basin. *National Cancer Institute Monograph 53. DHEW Publication No. (NIH) 79-1864. 1979; 205 pages (Stock No. 017-042-00142-1).*

The Consumer's Guide to Mental Health and Related Federal Programs. Edited by John J. Cohns and Louis E. Kopolow. *DHEW Publication No. (ADM) 79-760. 1970; 204 pages (Stock No. 017-024-00953-9).*

The Area Resource File. A Manpower Planning and Research Tool. August 1979. *DHEW Publication No. (HRA) 80-4. December 1979; 168 pages.*

A Guide to Medical Self-Care and Self-Help Groups. *DHEW Publication No. (NIH) 80-1687. 1980.*

The Report of the High Density Lipoprotein Methodology Workshop. *DHEW Publication No. (NIH) 79-1661. August 1979; 399 pages.*

A Report on Allied Health Personnel. Prepared for the Committee on Interstate and Foreign Commerce, House of Representatives and Labor and Human Resources, United States Senate. *DHEW Publication No. (HRA) 80-28. December 1979.*

Manual de Sistemas y Procedimientos

para Miembros de Juntas Directivas. *Publication de DHEW No. (HSA) 79-5503*. 1980; 36 pages.

---

Federal publications listed are obtainable from the Superintendent of Documents, U.S. Government Printing Office, Washington, D.C. 20402. Orders should be accompanied by check or money order and should identify the publication. (Publications without prices may be obtained from the agency.)

---

## WORLD HEALTH ORGANIZATION

The Eradication of Smallpox From India. *WHO Series History of International Public Health No. 2. South-East Asia Series No. 5*. By R. N. Basu, Z. Jezek, and N. W. Ward. 1979; 346 pages (ISBN 92 9022 105 4); *South-East Asia Regional Office*.

National Drug Policies. *Public Health in Europe 12*, 1979; 99 pages (ISBN 92 9020 131 2); *WHO Regional Office for Europe, Copenhagen*.

Health Education: Smoking, Alcoholism, Drugs. Review of Selected Programmes for Schoolchildren and Parents. *EURO Reports and Studies 10*. By K. Vuylsteek. 1979; 58 pages (ISBN 92 9020 149 5). *WHO Regional Office for Europe, Copenhagen*.

Radiological Examination of Drinking-Water. Report on a WHO Working Group, Brussels, 7-10 November 1978. *EURO Reports and Studies 17*. 1979; 20 pages (ISBN 92 9020 156 8). *WHO Regional Office for Europe, Copenhagen*.

Road Traffic Accident Statistics. Report on a WHO Ad Hoc Technical Group, Prague, 26-28 September 1978. *EURO Reports and Studies 19*. 1979; 26 pages (ISBN 92 9020 158 4). *WHO Regional Office for Europe, Copenhagen*.

Health Aspects Related to Indoor Air Quality. Report on a WHO Working Group, Bilthoven, 3-6 April 1979. *EURO Reports and Studies 21*. 1979; 32 pages (ISBN 92 9020 160 6). *WHO Regional Office for Europe, Copenhagen*.

Human Viruses in Water, Wastewater and Soil. Report of a WHO Scientific Group. *WHO Technical Report Series No. 639*. 1979; 50 pages (ISBN 92 4 120639 X); *Geneva*.

Joint WHO/UNICEF Meeting on Infant and Young Child Feeding. Statement, Recommendations, List of Participants. Geneva, 9-12 October 1979. 55 pages; *Geneva*.

Specifications for Pesticides Used in Public Health. *Fifth edition*. 1979; 327 pages (ISBN 92 4 154140 7); *Geneva*. (French and Spanish editions in preparation.)

Physician and Nurse Migration: Analysis and Policy Implications. Report of a WHO Study. By A. Mejia, H. Pizurki, and E. Royston. 1979; 476 pages (ISBN 92 4 156059 2); *Geneva*.

Traditional Birth Attendants. An annotated bibliography on their training, utilization and evaluation. *HMD/NUR/79.1*. 1979; 68 pages; *Division of Health Manpower Development; Geneva*.

The International Pharmacopoeia. Vol. 1. General Methods of Analysis. *Third edition*. 1979; 223 pages (ISBN 92 4 154150 4); *Geneva*. (French and Spanish editions in preparation.)

World Health Statistics Annual. Infectious Diseases: Cases. 1979; 242 pages (ISBN 92 4 067792 5); *Geneva*. Bilingual edition (English and French).

---

WHO publications may be obtained from WHO Publications Centre USA, 49 Sheridan Ave., Albany, N.Y. 12210.

---

## NON-FEDERAL

Mental Retardation—A Changing World. By Leopold Lippman. *Public Affairs Pamphlet No. 577*. December 1979; 28 pages; 50 cents. *Public Affairs Pamphlets, 381 Park Ave. South, New York, N.Y. 10016*.

Ageism—Discrimination Against Older People. By Irving R. Dickman. *Public Affairs Pamphlet No. 575*. October 1979; 28 pages; 50 cents. *Public Affairs Pamphlets, 381 Park Ave. South, New York, N.Y. 10016*.

HMOs and the Politics of Health System Reform. By Joseph L. Falkson. December 1979; 231 pages; \$9.75 paperback (AHA catalog No. 1182, ISBN 0-87258-276-0), \$12.75 casebound (AHA catalog No. 1183, ISBN 0-87258-288-4). Published by American Hospital Association and Robert J. Brady Co. American Hospital Association, 840 North Lake Shore Dr., Chicago, Ill. 60611.

Protein-Energy Malnutrition in Barbados: The Role of Continuity of Care in Management. *By Frank C. Ramsey.* 1979; 173 pages; \$4 (ISBN 0-914363-28-3). *Josiah Macy, Jr. Foundation, New York, N.Y. Distributed by Independent Publishers Group, 14 Vandeventer Ave., Port Washington, N.Y. 11050.*

Proceedings of the Fifteenth Annual Meeting on Prospective Medicine and Health Hazard Appraisal. 1979; 88 pages; \$15, orders of 5 or more copies, \$10. *Health and Education Resources, 4733 Bethesda Ave., Bethesda, Md. 20014.*

Medical Education Since 1960. *Edited by Andrew D. Hunt and Lewis E. Weeks.* 1979; 393 pages. *Published by the Michigan State University Foundation with the cooperation and support of the W. K. Kellogg Foundation. W.*

*K. Kellogg Foundation, 400 North Ave., Battle Creek, Mich. 49016.*

Your Health and the Government. The United States in the 1980s. *By Rita Ricardo Campbell.* 1980; pp. 285-341. *Hoover Institution, Stanford University, Stanford, Calif. 94305.*

Publications Catalogue. 1980. *Joint Commission on Accreditation of Hospitals, 875 North Michigan Ave., Chicago, Ill. 60611.*

Nursing Home Quality Assurance Project. Annual report, FY 1978-79. *Wisconsin Department of Health and Social Services, Division of Health, Box 309, Madison, Wis. 53701.*

Public Health Statistics, 1977. *Published by Division of Health, Wisconsin Department of Health and Social Services. 120 pages. Bureau of Health Statistics, Section of Statistical Services, P.O. Box 309, Madison, Wis. 53701.*

Hormonal Biology of Endometrial Cancer. A series of Workshops on the Biology of Human Cancer. *Report No. 8. Edited by G. S. Richardson and D. T. MacLaughlin. UICC Technical Report Series, Vol. 42. 1978, 187 pages (ISBN 92 9018-042-0). International Union Against Cancer, 3 rue du Conseil-Général, CH 1205 Geneva, Switzerland.*

Evaluation of Sugar Fortification With Vitamin A at the National Level. *By Guillermo Arroyave, Juan R. Aguilar, Marina Flores, and Miguel A. Guzmán. Scientific Publication 384. Pan American Health Organization. 1979; 82 pages. Pan American Health Organization, 525 Twenty-Third St., NW, Washington, D.C. 20037.*

Order non-Federal publications from publisher or sponsoring agency.

**PUBLIC HEALTH reports**

**ORDER FORM**

PLEASE PRINT OR TYPE

Please enter my subscription to PUBLIC HEALTH REPORTS at \$15.00 a year Domestic; \$18.75 a year Foreign. (HSMHA)

Name—First, Last  
 \_\_\_\_\_  
 Street address  
 \_\_\_\_\_  
 Company name or additional address line  
 \_\_\_\_\_  
 City \_\_\_\_\_ State \_\_\_\_\_ ZIP Code \_\_\_\_\_  
 (or Country) \_\_\_\_\_

FOR OFFICE USE ONLY	
Quantity	Charges
_____ Enclosed	
_____ To be mailed	
_____ Subscriptions	
Postage _____	
Foreign handling _____	
MMOB _____	
OPNR _____	
_____ UPNS	
_____ Discount	
_____ Refund	

Enclosed is \$ \_\_\_\_\_

check,  money order, or charge to my Deposit Account No.

\_\_\_\_\_-\_\_\_\_

Order No. \_\_\_\_\_



Credit Card Orders Only  VISA  master charge

Total charges \$ \_\_\_\_\_ Fill in the boxes below.

Credit Card No. \_\_\_\_\_

Expiration Date Month/Year \_\_\_\_\_

Mail to: Superintendent of Documents, U.S. Government Printing Office, Washington, D.C. 20402