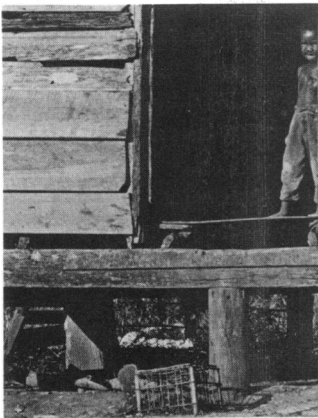


- Editorial. Escalating costs of health care *Robert A. Derzon* (cover 2)
- 499 Capital financing for health facilities *Lyman G. Van Nostrand*
- 508 Social surveys and health policy: Implications for national health insurance *Lu Ann Aday, Ronald Andersen, and Odin W. Anderson*
- 518 Third-party payments for new health professionals: An alternative to fractional reimbursement in outpatient care *Stuart O. Schweitzer and Jane Cassels Record*
- 527 Is Early and Periodic Screening, Diagnosis, and Treatment (EPSDT) worthwhile? *Richard Currier*
- 537 The Pan American Health Organization—75 years of international cooperation in public health *Héctor R. Acuña*
- 545 Respiratory symptoms of employees of retail meat departments. Preliminary results of a study in northeastern Ohio *Stephen M. Fleet, Jerome I. Barancik, and Timothy M. Tuthill*
- 554 Comparison of laboratory performance with blind and mail-distributed proficiency testing samples *Louis C. LaMotte, Jr., Gordon O. Guerant, D. Sue Lewis, and Charles T. Hall*
- 561 Educational workshop in microbiology. A home-study approach *Mehdi Shayegani and Hassan A. Gaafar*
- 564 Review of health services in correctional facilities in the United States *John Newport*
- 570 A community health project in ten-year perspective *David Savitz and Evelyn A. Mauss*

IN THIS ISSUE ▽ 570 ▽ ▽ 589



U.S. DEPARTMENT OF HEALTH,
EDUCATION, AND WELFARE
Joseph A. Califano, Jr., *Secretary*

PUBLIC HEALTH SERVICE
Julius B. Richmond, MD
Assistant Secretary for Health

HEALTH RESOURCES
ADMINISTRATION
Henry A. Foley, PhD, *Administrator Designate*

PUBLIC HEALTH REPORTS
Marian Priest Tebben, *Editor*
Esther C. Gould, *Assistant Executive Editor*
Virginia M. Larson, *Managing Editor*
Don Meeker, *Art Director*

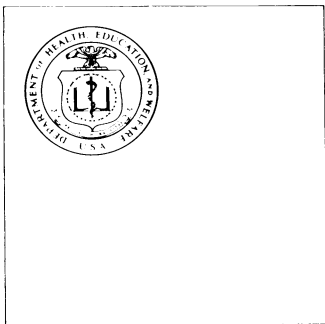
Opinions expressed are the authors' and do not necessarily reflect the views of Public Health Reports or the Health Resources Administration. Trade names are used for identification only and do not represent an endorsement by the Health Resources Administration.

Address correspondence to:

Editor, Public Health Reports
Room 10-30 Center Bldg.
3700 East-West Highway
Hyattsville, Md. 20782
Telephone:
Area code 301-436-8992

Subscription Information

To subscribe to Public Health Reports, send check or money order—\$1.75 per single issue, \$10.35 per year (6 issues), \$12.95 for foreign mailing—to Superintendent of Documents, U.S. Government Printing Office, Washington, D.C. 20402. All correspondence about paid subscriptions (for example, re change of address or failure to receive an issue) should also be addressed to the Superintendent of Documents.



U.S. DEPARTMENT OF HEALTH,
EDUCATION, AND WELFARE
Public Health Service
Health Resources Administration

PROGRAMS, PRACTICES, PEOPLE

- 582 Cooperative steps to reform regulatory process and improve health of workers and public
- 582 NCHSR research support for education advisors
- 583 Space satellites enhance education, consultation in remote VA hospitals
- 583 Guide to implementing self-applied fluoride programs in schools
- 583 Recent NCI publication covers 5,000 years of cancer research
- 584 NCI launches program to inform public of thyroid cancer risks
- 584 NCHSR issues two studies of physician extenders
- 585 A device to hold dog heads for rabies examination
- 585 Brochures must accompany prescription drugs containing estrogen and progestin
- 586 Society is formed to improve strategic health care planning
- 586 Successful drug treatment of patients with herpes encephalitis
- 587 Reader's guide for parents of children with handicaps
- 588 Publications
- 589 1977 annual index
- 600 Information for contributors to Public Health Reports
- PHR bookshelf (cover 3)