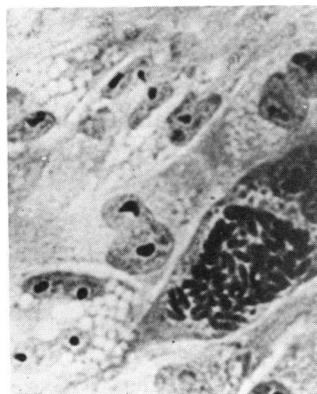
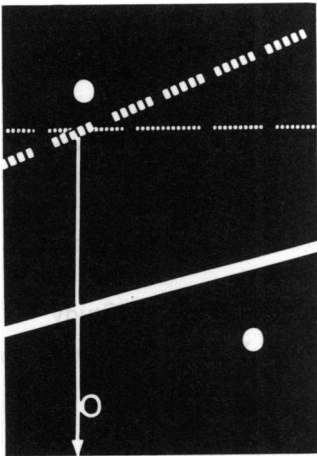


Editorial. The malpractice question—what is being done? □ *Kenneth M. Endicott* (cover 2)

- 491 Untoward outcomes of health care—who is liable □ *Theodore Cooper*
- 493 Federal health services grants, 1965–75 □ *Daniel I. Zwick and Clyde J. Behney*
- 496 Why some HMOs develop slowly □ *George B. Strumpf and Marie A. Garramone*
- 504 Composition of the subscribers in a rural prepaid group practice plan □ *Gregory R. Nycz, Frederick J. Wenzel, Francis N. Lohrenz, and John H. Mitchell*
- 508 Quantitative relationships between perceived and objective need for health care—dentistry as a model □ *Donald B. Giddon, Marilyn Mosier, Theodore Colton, and John S. Bulman*
- 514 Screening and referral outcomes of school-based health services in a low-income neighborhood □ *Shu-Ping May Lan, Regina Loewenstein, Calvin Sinnette, Constance Rogers, and Lloyd Novick*
- 521 Design and test of a system for tracking referrals □ *Karl E. Bauman and Martie Coulter*
- 526 Prevalence of *Toxoplasma gondii* antibodies among veterinary college staff and students, Iowa State University □ *W. J. Zimmermann*
- 533 Schooling, occupational motivation, and personality as related to success in paramedical training □ *Richard F. Booth, Evelyn G. Webster, and Michael S. McNally*
- 538 Some economic and financial considerations of health and medical care among three-generational families □ *Theodor J. Litman*
- 541 Youth health services at a resort □ *Patricia A. Ford*
- 545 Home health services in New Hampshire □ *Frank A. Hale and Arthur R. Jacobs*

IN THIS ISSUE ▽ 508 ▽ 526



U.S. DEPARTMENT OF HEALTH,  
EDUCATION, AND WELFARE  
David Mathews, PhD, *Secretary*

PUBLIC HEALTH SERVICE  
Theodore Cooper, MD  
*Assistant Secretary for Health*

HEALTH RESOURCES  
ADMINISTRATION  
Kenneth M. Endicott, MD, *Administrator*

PUBLIC HEALTH REPORTS  
Marian Priest Tebben, *Editor*  
Esther C. Gould, *Assistant Executive Editor*  
Virginia M. Larson, *Managing Editor*  
Don Meeker, *Art Director*

Opinions expressed are the authors' and do not necessarily reflect the views of Public Health Reports or the Health Resources Administration. Trade names are used for identification only and do not represent an endorsement by the Health Resources Administration.

*Address correspondence to:*

Editor, Public Health Reports  
Room 9-53, Parklawn Bldg.  
5600 Fishers Lane  
Rockville, Md. 20852  
Telephone:  
Area code 301-443-2525

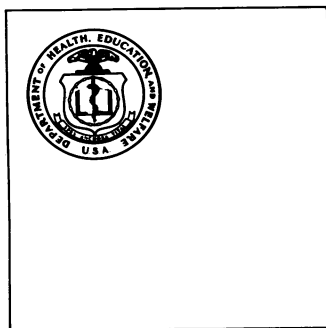
- 552 The Michigan Ambulatory Medical Care Survey □ *Richard G. Cornell, Larry E. Brown, and Thomas J. Tomberlin*
- 556 Sample design for a survey of immunization levels of children in licensed day-care facilities in North Carolina □ *Kathryn B. Surles and Paul W. C. Johnson*
- 560 Accidental carbon monoxide poisonings in Colorado and Wyoming, 1971-73 □ *E. P. Savage, J. W. Malberg, H. W. Wheeler, and J. D. Tessari*
- 563 Bicentennial reprint. Public health administration and the citizen (June 12, 1914) □ *C. W. Stiles*

**PROGRAMS, PRACTICES, PEOPLE**

- 565 Physicians must be warned on prescribing tranquilizers during first trimester
- 565 HRA awards contract for national study of medical care expenditures
- 566 ESR spectroscopy resource funded by NIH aids in probing living matter
- 566 1977 Conference on Transfer of Water Resources Knowledge
- 567 Society for Biomaterials meeting and 9th International Biomaterials Symposium
- 567 New book seeks to answer questions about civil rights of mentally disabled
- 567 Film on measuring blood pressure now available on free loan
- 567 Grant to study early diagnosis of cerebral palsy in infancy
- 568 Prostatic cancer in men can be detected by blood test
- 568 Bicentennial book traces U.S. health policy
- 568 Combined preventive measures further reduce tooth decay
- 569 International network set up by NLM for the exchange of biomedical information
- 569 Studies show increased risk of cancer among workers in metal-related occupations
- 570 HRA announces publication of "Health Care: an International Study"
- 570 3-year-old periodical "Alcohol Health and Research World" to go only to paid subscribers
- 571 New growth charts for American youngsters released by NCHS
- 571 "State and County Mental Hospitals, United States, 1973-74" issued by NIMH
- 571 Data on 9,080 cancer patients from N.Y. and Pa. hospitals for 1970-73 are available
- 572 Papers for health planners—monograph on health goals and standards issued by HRA
- 572 New breath test devised for impaired ability to digest milk
- 572 Bibliographies available from National Library of Medicine
- 573 Education notes
- 575 Publications
- 577 1976 index
- PHR bookshelf offer (cover 3)

**Subscription Information**

To subscribe to *Public Health Reports*, send check or money order—\$2.05 per single issue, \$12.20 per year (6 issues), \$15.25 for foreign mailing to Superintendent of Documents, U.S. Government Printing Office, Washington, D.C. 20402. All correspondence about paid subscriptions (for example, re change of address or failure to receive an issue) should also be addressed to the Superintendent of Documents.



U.S. DEPARTMENT OF HEALTH,  
EDUCATION, AND WELFARE  
Public Health Service  
Health Resources Administration