

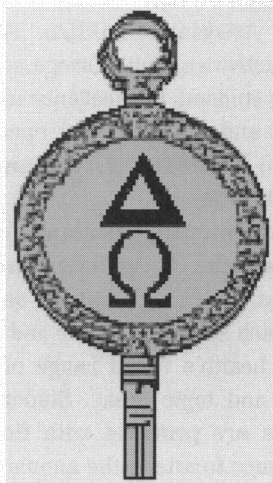
Delta Omega: Encouraging Excellence in Public Health Practice, Teaching, and Research

Greg Alexander, MPH, ScD, RS
Lisa Paine, CNM, DrPH
Mary Peoples-Sheps, MS, DrPH
Don Morisky, ScD, MSPH
Allison Foster, MBA

Delta Omega Honorary Society, the public health honorary society of accredited schools and programs of public health, has been active in advancing public health education, practice, and research for more than three-quarters of a century. The purpose of the Society is to encourage excellence in student scholarship and research and to recognize academic and professional achievement in the field of public health. Established in 1924 at the Johns Hopkins University, Delta Omega is made up of an Executive Committee, which operates the national office, and more than 20 active chapters affiliated with individual accredited schools or programs of public health. The national office is housed at the Association of Schools of Public Health (ASPH). The national office coordinates the annual activities of the Society, offers assistance to local chapters, and maintains the Society's historical records.

Delta Omega Membership

Each year, Delta Omega admits students, faculty, and alumni to member-



ship. More than 500 new members were inducted in 1999. Beyond academic attainment, inductees are chosen for their creativity, courage, perseverance, and collegiality, qualities that typify individuals with outstanding careers in public health. Delta Omega also recognizes leadership and exemplary service to the field by electing honorary members. Honorary members can be elected by either the national organization or individual chapters in recognition of exceptional local, state, national, and international public health service.

Membership in Delta Omega is intended to do more than acknowledge exceptional accomplishments in public health scholarship, practice, education, and research. Membership is

ASPH REPORT

extended to encourage further excellence in, and devotion to, public health. Delta Omega members are expected to help the next generation of public health workers to achieve their potential by continuing to serve as mentors and role models.

In the words of one of the first National Presidents, John Sundwall, MD PhD, of the University of Michigan School of Public Health, "Membership in the Society of Delta Omega should not be regarded solely as an honor in recognition of past achievements in the field of public health. It should mean lifelong obligations and devotion to the interests of public health in accordance with the ideals of Delta Omega. It should imply zest for erudition as measured in terms of scholarship and research and constant effort to be in the vanguard of the modern public health movement as manifested by intelligent, considered, constructive action and effective leadership. Election to Delta Omega should be regarded as a consecration to quality work and to high standards in all those interests and activities making up modern public health. Let each who holds its key ask not infrequently: "What am I doing now to merit membership in Delta Omega?"

*Association of Schools of Public Health • 1101 15th Street NW, Suite 910, Washington DC 20005
(202) 296-1099 • www.asph.org*

Delta Omega Public Health Classics

For more than a decade, Delta Omega has sought to preserve and promote public health history by identifying and reprinting public health classics. Classics may be books, scientific journal articles, technical reports, legislation, or other written publication or multi-media products that are written in a manner that is accessible to all public health disciplines. The classics are selected for their historical value and their significant contribution to the profession and science of public health or to the health of the public by making an advancement in public health knowledge, methodology, philosophy, practice, or policies/programs/services. The Society posts these classics on its website in order that they may be widely accessible to students, educators, and practitioners.

Current public health classics that can be downloaded from the Delta Omega website (www.deltaomega.org) include:

- *An Essay Concerning the Cause of the Endemial Colic of Devonshire*, George Baker, 1767
- *The People's Misery: Mother of Diseases*, Johann Peter Frank, 1790
- *On the Mode of Communication of Cholera*, John Snow, MD, 1836
- *Notes on Nursing*, Florence Nightingale, 1860
- *Typhoid Fever*, William Budd, MD, 1874
- *The Mosquito Hypothetically Considered as an Agent in the Transmission of Yellow Fever Poison*, Carlos Juan Finlay, 1881
- Summary chapters from: *The Costs of Medical Care*, IS Falk, C. Rufus Rorem, Martha D. Ring, 1983.

Promoting Research and Scholarship

Delta Omega has promoted student scholarship and research by conducting national student essay contests on the topic of social justice and, most recently, by sponsoring national student poster sessions at the annual meetings of the American Public Health Association (APHA). Through these activities, Delta Omega seeks to inspire students to excellence in scholarship and research and encourage them to undertake lifelong careers in public health.

Student presentations for the national Delta Omega Research Poster Contest are competitively selected from each school's chapter and reflect public health's broad range of disciplines and topic areas. Student presenters are provided with financial assistance to attend the annual APHA meeting in addition to a one-year APHA student membership and a cash award. Titles and authors of recent student presentations are posted on the Society's website.

Bridging the Gap Between Academia and Practice

Delta Omega is expanding its efforts to recognize activities that span the bridge between public health academia and practice. This emphasis is in acknowledgment of the important role that graduate and continuing education programs play in the development and maintenance of a strong, active, and well-prepared public health workforce. A Delta Omega award has recently been created to give recognition to innovative curricula in an effort to stimulate the evolution of graduate public health courses that respond in unique ways to the ever-changing

developments in the field of public health. The purpose of this award is to highlight public health course curricula that are integrative, practice-oriented, multi-disciplinary, and skills development-focused. Preference is given to course curricula that integrate actual public health practice experiences and examples into classroom discussions and exercises, stress excellence in public health practice and scholarship, emphasize the application of public health principles, focus on skills development, incorporate practice-based and community sector partners in teaching, and make use of interdisciplinary examples. Awards, which will recognize the school and the course instructors, will be based on a review of submitted course materials, including course purpose, syllabus, exercises, reading materials, and evaluations. A call for nominations for the initial Delta Omega Public Health Curriculum Award was formally announced at the year 2000 APHA Annual Meeting. The first recipients of the award will be honored in 2001.

During Delta Omega's first 75 years, the scope of public health has greatly increased from communicable disease control and environmental sanitation, to health promotion and disease prevention, to bioterrorism. These changes place growing demands on the profession to broaden its activities and keep abreast. Through its membership and national initiatives, Delta Omega seeks to promote professionalism in public health and spur ongoing developments in practice, education, and research to meet the ever-emerging challenges to the health of the public.

For more information about Delta Omega, please contact the national office at 1101 15th Street N.W., Suite 910, Washington, DC 20005; 202-296-1099; www.deltaomega.org.

*Association of Schools of Public Health • 1101 15th Street NW, Suite 910, Washington DC 20005
(202) 296-1099 • www.asph.org*

Who's Who in Delta Omega

The Society was founded by Edgar Erskine Hume and Claude William Mitchell, with the support of William Henry Welsh. More than 5,000 individuals have been inducted into Delta Omega since its founding. A list of inductees for whom there are records can be found on the Delta Omega website at www.deltaomega.org.

Most Delta Omega members are inducted at the beginning of their careers, although membership is also awarded to school of public health alumni and faculty whose careers reflect meritorious service to the field. Among the charter and early honorary

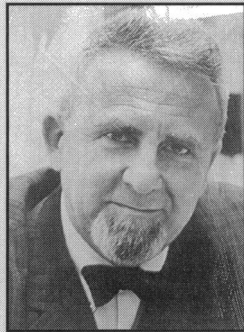
members of Delta Omega are: Sara Josephine Baker (pioneer in child health issues), Yves Biraud (former Director for Epidemiological Services and Health Statistics, World Health Organization), Hugh Smith Cumming (former U.S. Surgeon General), Herbert Hoover (former U.S. President), George Walter McCoy (former Medical Director, U.S. Public Health Service), Frederick Fuller Russell (former Head of the International Health Board), Mazyck Porcher Ravenel (former Editor of the *American Journal of Public Health*), Sir William Wilson Jameson (former Dean of the London School of Hygiene and Tropical Medicine), and William Hallock Park (former President of APHA).

Among notable figures in public health who are members of Delta Omega:

DA Henderson, MD, MPH, was inducted in 1979 at the Alpha Chapter, Johns Hopkins University School of Public Health.

DA Henderson was chief medical officer of the World Health Organiza-

tion's smallpox eradication campaign and led WHO's final campaign against this disease that had killed and disfigured multitudes. At the end of the campaign, when no more cases could be found despite great effort and a WHO offer of \$1,000 for any report, he said, "We knew we had done it, but we couldn't believe it." Dr. Henderson later became the Dean of the School of Hygiene and Public Health at Johns Hopkins and is now a full-time professor at Hopkins and a leader in the efforts against bioterrorism.



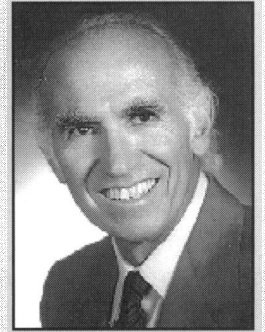
Roemer

Milton Roemer, MD, MS, MPH, was inducted in 1968 at the Iota Chapter, University of California at Los Angeles.

Milton Roemer is an Emeritus Professor at the UCLA School of Public Health, where he has

been on the faculty since 1962. During his distinguished career in health administration, he has been both a county and state health official, an officer of the Public Health Service, and a Section Chief of the World Health Organization. As an international consultant, Dr. Roemer has studied health care organization in 71 countries. He has published 34 books and approximately 400 articles on the social aspects of health service. In 1977, he received APHA's International Award for Excellence in Promoting and Protecting the Health of People. In 1983, APHA awarded Dr. Roemer its highest honor, the Sedgwick Memorial Medal for Distinguished Service in Public Health.

Jonas Salk, MD, was inducted in 1947 at the Delta Chapter, University of Michigan School of Public Health.



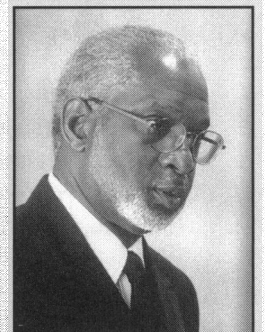
Salk

Jonas Salk's early studies were devoted to the development of an influenza vaccine.

His research led to the development of the now-famous Salk vaccine against polio. Dr. Salk was also a leader in the search for world peace and focused much of the rest of his life to finding the cure for war, or in his words, "Finding a cure for the cancer of the world." The world has recognized Jonas Salk's contribution to world peace; he has been honored with dozens of awards, including the Presidential Medal of Freedom and the Nehru Award for International Understanding.

David Satcher, MD, PhD, was inducted in 1998 as an Honorary Member by the national office.

Dr. David Satcher is the 16th Surgeon General of the United States. Sworn in on February 13, 1998, he is only the second person in history to simultaneously hold the positions of Surgeon General and Assistant Secretary for Health. In these roles, he serves as the Secretary's senior advisor on public health matters and as director of the Office of Public Health and Science.



Satcher

*Association of Schools of Public Health • 1101 15th Street NW, Suite 910, Washington DC 20005
(202) 296-1099 • www.asph.org*

Prior to nominating Dr. Satcher to serve in his present post, President Clinton had appointed him as Director of the Centers for Disease Control and Prevention and Administrator of the Agency for Toxic Substances and Disease Registry, where he served from 1993 to 1998.



Scrimshaw

Susan Scrimshaw, PhD, was inducted in 1979 at the Iota Chapter, University of California at Los Angeles School of Public Health.

Susan Scrimshaw is the Dean of the University of Illinois at Chicago School of

Public Health. Dean Scrimshaw is an anthropologist who developed (with co-author Elena Hurtado) the Rapid Anthropological Assessment Procedures (RAP) guidelines for nutrition and primary health care program planning and evaluation. She has been an investigator on numerous research projects, such as the RAND Management of Child Birth project, the UCLA Mediators of Birth Outcomes Project, the UCLA Stress in Pregnancy Project, the Healthy African American Families Project, and Predictors of Relationship Violence Among Inner-City Youth in Chicago. She received the Margaret Mead Award in 1985, is a member of the Institutes of Medicine and an AAAS Fellow, and is the Chair-Elect of the Association of Schools of Public Health.

Myron Wegman, MD, MPH, was inducted in 1940 at the Alpha Chapter, Johns Hopkins University School of Public Health.

Myron Wegman is known as a public health pioneer. A medical and public health educator, he began his public health career as a pediatrician working to decrease infant mortality rates. He later became Dean of the University of Michigan School of Public Health, Secretary General of the Pan American Health Organization, and President of APHA. Dr. Wegman has been quoted as saying that public health should "help people to die young at a very old age."

Chapters of Delta Omega

Alpha Chapter
School of Hygiene & Public Health
Johns Hopkins University
615 N. Wolfe Street
Baltimore, MD 21205

Gamma Chapter
School of Nursing
University of Hawaii
1960 East-West Road
Honolulu, HI 96822

Delta Chapter
School of Public Health
University of Michigan
109 South Observatory Street
Ann Arbor, MI 48109

Eta Chapter
School of Public Health & Tropical
Medicine
Tulane University
1430 Tulane Avenue
New Orleans, LA 70112

Theta Chapter
School of Public Health
University of North Carolina
Campus Box 7400
Chapel Hill, NC 27599-7400

Iota Chapter
School of Public Health
University of California, Los Angeles
16-071 CHS
Box 951772
Los Angeles, CA 90095

Kappa Chapter
School of Public Health
Loma Linda University
Loma Linda, CA 92350

Lambda Chapter
School of Public Health
University of Illinois at Chicago
2121 West Taylor Street
Chicago, IL 60612

Mu Chapter
Norman J. Arnold School of Public
Health
University of South Carolina
Health Sciences Building
Columbia, SC 29208

*Association of Schools of Public Health • 1101 15th Street NW, Suite 910, Washington DC 20005
(202) 296-1099 • www.asph.org*

Xi Chapter
College of Public Health
University of Oklahoma Health
Sciences Center
CHB139, P.O. Box 26901
Oklahoma City, OK 73190

Omicron Chapter
Graduate School of Public Health
University of Pittsburgh
114 Parran Hall
Pittsburgh, PA 15261

Pi Chapter
School of Public Health
University of Minnesota
420 Delaware Street S.E.
Box 197 Mayo
Minneapolis, MN 55455

Rho Chapter
School of Public Health
University of Massachusetts
101 Arnold House
Amherst, MA 01003

Tau Chapter
College of Public Health
University of South Florida
13201 Bruce B. Downs Blvd.
MDC-56
Tampa, FL 33612

Upsilon Chapter
School of Public Health
University of Alabama at Birmingham
120 Ryals Building
1665 University Boulevard
Birmingham, AL 35294

Phi Chapter
Rollins School of Public Health
Emory University
1518 Clifton Road N.E.
Atlanta, GA 30322

Chi Chapter
School of Public Health
University of Puerto Rico
Medical Sciences Campus
G.P.O. Box 365067
San Juan, PR 00936-5067

**Psi Chapter/Div. of Epidemiol. and
Biostatist., Dept. of Prev. Medicine
and Biometrics/Uniformed Services
Univ. of the Health Sciences**
4301 Jones Bridge Road
Bethesda, MD 20814

Omega Chapter
School of Public Health & Health
Services
George Washington University
2300 Eye Street N.W.
Washington, DC 20037

Alpha Beta Chapter
School of Public Health
Boston University
715 Albany Street
Boston, MA 02118

Alpha Gamma Chapter
School of Public Health
State University of New York at
Albany
One University Place
Rensselaer, NY 12144

Alpha Delta Chapter
School of Public Health
Saint Louis University
3663 Lindell Blvd.
St. Louis, MO 63108

Alpha Epsilon Chapter
School of Public Health
Ohio State University
320 West 10th Avenue
Columbus, OH 43210

Alpha Zeta Chapter
School of Allied Health Professions
Public and Community Health
Programs
Northern Illinois University
DeKalb, IL 60115

Alpha Eta Chapter
School of Public Health
University of Medicine and
Dentistry—New Jersey
170 Frelinghuysen Road, Room 236
Piscataway, NJ 08854

Alpha Theta Chapter
Department of Family and Preventive
Medicine
University of Utah
50 North Medical Drive
Salt Lake City, UT 84132

Alpha Iota Chapter
School of Public Health
University of Texas
1200 Hermann Drive
Houston, TX 77030

Alpha Kappa Chapter
Graduate Program in Public Health
Eastern Virginia Medical School
P.O. Box 1980
Norfolk, VA 23501-1980

Alpha Lambda Chapter
Department of Community Health and
Preventive Medicine
Morehouse School of Medicine
720 Westview Drive S.W.
Atlanta, GA 30310

*Association of Schools of Public Health • 1101 15th Street NW, Suite 910, Washington DC 20005
(202) 296-1099 • www.asph.org*