

# PUBLIC HEALTH

## R E P O R T S

### REFLECTIONS

**Building the Next Generation of Healthy People . . . 212**  
*JULIUS B. RICHMOND*

### MODELS THAT WORK

**HRSA's Models That Work Program: Implications for Improving Access to Primary Health Care . . . . . 218**  
*REGAN L. CRUMP, MARILYN H. GASTON, ET AL.*

### USING DATA

**VIEWPOINT**  
**Medicaid Managed Care and Public Health Data . . . 225**  
*GEORGE W. RUTHERFORD, HOWARD D. BACKER*

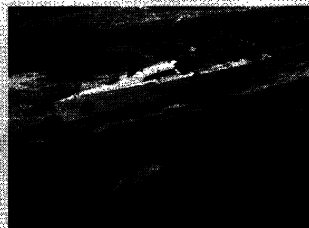
### PARTNERSHIPS

**VIEWPOINT**  
**Sharing Responsibility for the Public's Health . . . . 231**  
*MICHAEL A. STOTO*

### ALCOHOL

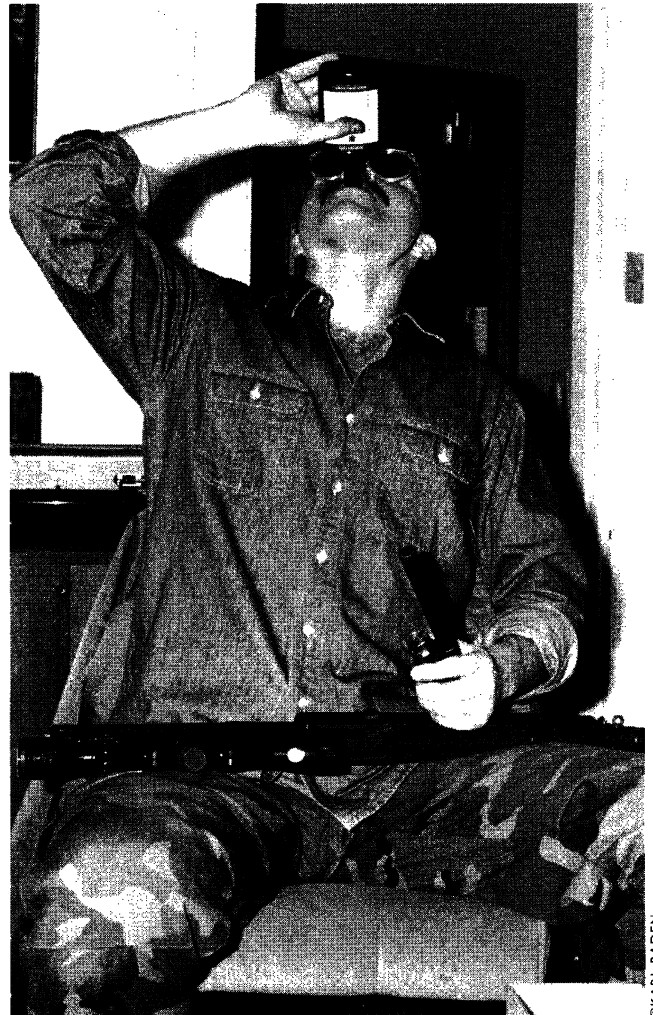
**PHOTO ESSAY**  
**From Social Drinking...to Public Problems . . . . . 236**  
*PHOTOS BY KARL BADEN*

### COVER PHOTO:



AP PHOTO/IAN MAINSBRIDGE

Dismasted racing yacht *Stand Aside* tows a life raft as she is stranded in Bass Strait off Australia's southeast coast on Dec. 27, 1998. Despite predictions of severe weather along its course, the annual Sydney to Hobart yacht race was not called off, resulting in several deaths. What are the implications for public health of this failure to heed a forecast of significant risk? See Overseas Observer, p. 278. ■



©KARL BADEN

## D E P A R T M E N T S

- Editorial . . . . . 203
- News & Notes . . . . . 204
- Overseas Observer . . . . . 278
- Extreme Exposure  
*CHARLES GUEST*
- NCHS Dataline . . . . . 281
- Public Health Service . . . . . 283
- Association of Schools of Public Health . . . . . 288
- Writing for *PHR* . . . . . 291
- Advertisement . . . . . 292

# PUBLIC HEALTH

R E P O R T S

## SCIENTIFIC CONTRIBUTIONS

Development of a Surveillance Program  
for Occupational Pesticide Poisoning: Lessons  
Learned and Future Directions . . . . . 242

*PATRICIA G. SCHNITZER, JACKILEN SHANNON*

Viral Meningitis in Child Care Center  
Staff and Parents: An Outbreak of Echovirus  
30 Infections . . . . . 249

*JANET C. MOHLE-BOETANI, CHANTAL MATKIN, ET AL.*

Asthma Prevalence among American  
Indian and Alaska Native Children . . . . . 257

*JAMES W. STOUT, MARIANNE SULLIVAN, ET AL.*

Domestic Violence and Sexually  
Transmitted Diseases: The Experience  
of Prenatal Care Patients . . . . . 262

*SANDRA L. MARTIN, LOUIS S. MATZA, ET AL.*

Cross-Matching TB and AIDS Registries:  
TB Patients with HIV Co-Infection,  
United States, 1993-1994 . . . . . 269

*MARISA MOORE, EUGENE MCCRAY, IDA M. ONORATO*



## IN UPCOMING ISSUES

### Deafness and Mortality

STEVEN BARNETT

Data analyses suggest that to decrease their premature mortality, we should decrease role limitations of the postlingually deafened.

### Computer Mapping

THOMAS B. RICHARDS

Will GIS technology change the face of public health services?

### Workforce Regulation

LEN FINOCCHIO

Where is the public health in workforce regulation?