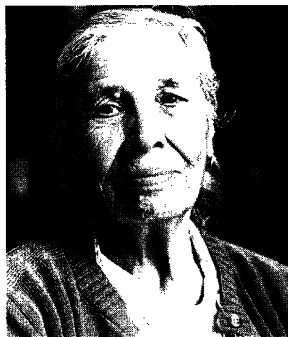


## COVER PHOTO:

This is Maria Cervantes, at an age we all hope to reach. On page 110, the Chief Actuary of the Health Care Financing Administration walks us through the most recent projections for the Medicare trust funds that pay for services almost all of us will use. ■



© BILL RAVANESI

### BREVITY ALERT FOR AUTHORS!

We receive many more scientific contributions than five years ago—one consequence of an improved journal. Because we also publish solicited pieces our acceptance rate has dropped below 15%. Please note that we have reduced the word limit on scientific contributions to 4000. To quote *Writing for PHR*, "Brevity is a virtue; between submissions of equal merit we are certain to choose the shorter one."

## IN UPCOMING ISSUES

### Medicine and the Economy

CHRISTINE BISHOP

As cost containment in the trillion-dollar health sector cuts expenditures, can we expect serious consequences for the economy as a whole?

Commentary by RASHI FEIN

### Do As I Say, Not As I Do

NICK ZILL

Parental health and health behaviors play an important modeling role for children.

### Cat and Dog Bites

Papers from Texas, Virginia, and Massachusetts examine different angles of the rabies problem.

Commentary by GEORGE BAER

### Poisoning

LOIS FINGERHUT

Death from poisoning is the third leading cause of injury mortality after car accidents and firearms.

What is happening?

### Epidemiology: Second-Class Science?

MARK PARASCANDOLA

It's time for epidemiologists to lose their inferiority complexes.

# PUBLIC HEALTH

R E P O R T S

*Public Health Reports* is published bi-monthly by the U.S. Public Health Service in collaboration with the Association of Schools of Public Health. All material is in the public domain and available for use with proper attribution to *Public Health Reports*. All scientific contributions, and many of the feature articles, are peer-reviewed. Opinions expressed are the authors' and do not reflect the views of *Public Health Reports* or the Public Health Service (PHS). Trade names are used for identification only and do not represent an endorsement by PHS.

**Anthony Robbins, MD**, Editor

E-mail: [robbins@nlm.nih.gov](mailto:robbins@nlm.nih.gov)

*Public Health Reports*

Room 1855

John F. Kennedy Federal Building

Boston MA 02203

Tel. 617-565-1440; fax 617-565-4260

E-mail: [phr@nlm.nih.gov](mailto:phr@nlm.nih.gov)

**Robin Chase**, Editorial Consultant

**Ned Curran**, Associate Editor

**Judy Kaplan**, Scientific Editor

**Janice Lesniak**, Operations Manager

**David Ozonoff**, Book Review Editor

**Glenn Pierce**, The Magazine Group, Design and Art Direction

**Bill Ravanesi**, Photo Consultant

*Public Health Reports* one-year subscription price is \$15 domestic and \$18.75 for foreign subscribers.

A subscription form appears on the back cover.

PUBLIC HEALTH REPORTS

USPS 324-990

ISBN 0033-3549



U.S. DEPARTMENT OF HEALTH  
AND HUMAN SERVICES

**Donna E. Shalala, PhD**  
Secretary



PUBLIC HEALTH SERVICE  
**David Satcher, MD PhD**  
Assistant Secretary for Health  
Surgeon General

ASSOCIATION OF SCHOOLS OF  
PUBLIC HEALTH  
**Allan Rosenfield, MD**  
President

Second class postage paid at Washington DC and additional mailing offices. Address changes, cancellations, or questions about paid subscriptions should be directed to: U.S. Government Printing Office, Mail List Branch, SSOM, Washington, DC 20402-9375; tel: 202-512-1806; fax: 202-512-2168. Other subscribers and POSTMASTER: send address changes to *Public Health Reports*, Room 1855, John F. Kennedy Federal Building, Boston MA 02203.

# Writing for *Public Health Reports*

We welcome contributions that help us meet the information needs of public health professionals by informing them about important developments in science, programs, policy, and practice. Our ultimate objective is to strengthen public health in the United States.

We welcome and strongly encourage telephone or e-mail inquiries before you undertake or complete the writing of your submission.

In general, *PHR* conforms to *Uniform Requirements for Manuscripts Submitted to Biomedical Journals*, published in *PHR*, May/June 1997 (112:253–63), and also available on-line at [www.acponline.org](http://www.acponline.org).

## Contributions and Their Length

Brevity is a virtue; between submissions of equal merit we are certain to choose the shorter one.

*Letters to the Editor.* We strongly encourage you to submit letters.

*News and Notes:* This section includes brief news items, report synopses, and announcements. These are used and rewritten at the discretion of the editors. *500-word maximum.*

*Feature Articles:* Features, often solicited, present the current status of a subject area and the implications for policy, programming, practice, or future research directions. For features it is particularly important that you send a query letter with your idea, its relevance to our readers, and why you are the appropriate author. If in doubt, look at recent issues of the journal for examples. A synopsis and key words for use in secondary publishing and indexing should be included. *4000-word maximum.*

*Scientific Contributions:* We seek to publish research that is fully developed and original. To avoid redundant publishing, we do not accept material that is preliminary or only incrementally different from previously published research. Scientific contributions should be presented in the most concise manner possible with a maximum length of *4000 words*, including a structured abstract of up to *250 words*.

*Viewpoints and Commentaries:* These are short opinion pieces, often solicited, addressing contemporary public health issues. *Commentaries* are written in response to *Feature Articles* or *Scientific Contributions*.

*Departments:* *PHS Chronicles*, *Public Health and the Law*, *Information Technology*, *Overseas Observer*, *Book and Film Reviews*, and *NCHS Dataline*. These are solicited pieces, for the most part, although we do welcome letters of inquiry proposing article ideas; *850–2500 words*.

## Authorship

Who is an author? Not a trivial question, so please refer to the *Uniform Requirements*. We do need to have the signature of each author before we can publish a paper or letter.

## Conflicts of Interest

Full disclosure and avoiding the appearance of a conflict are our guiding principles. If any financial influence or other conflict of interest *might* have biased your work, you are obliged to disclose it to us—even if you are confident that no bias intervened. Please let us decide what should be disclosed to our readers. Similarly, you must disclose any similar or related work submitted or published elsewhere.

## Covering Letter

When submitting your manuscript, help us by writing a thoughtful letter explaining why it belongs in *PHR*. We also need information on authorship and any conflicts of interest; a statement that the material has not been published nor is being considered for publication elsewhere; and references to closely related articles (copies should be enclosed). Give us your telephone and fax numbers and e-mail address. Please submit three copies of the manuscript, tables, and figures. Text should be double-spaced.

## Acknowledgment of Receipt

We acknowledge each submission when it arrives or when it is sent out for review.

## Peer Review

After an initial reading by our editors, we select promising scientific contributions for peer review; these are sent to two or more external reviewers.

## The Manuscript

Here's what your manuscript should look like:

*Title Page.* (a) title (short and descriptive); (b) full names of all authors, including their graduate degrees; (c) a separate paragraph identifying authors' institutional affiliations during the course of the research (and current affiliations if different); (d) name, street address, telephone and fax numbers, and e-mail address (if available) of corresponding author; (e) word count of the text (inclusive of references) and the number of charts/figures.

*Synopsis:* The abstract is your work's face to the world (as published by various medical indexes that include *PHR*). A good abstract promotes readership. Synopses of feature articles should be a maximum of 150 words without abbreviations, symbols, or references to tables or graphs. Abstracts of scientific articles (*250-word maximum*) should contain four parts labeled *Objectives*, *Methods*, *Results*, and *Conclusions*. Below the abstract provide a maximum of 10 key words (use Medical Subject Headings from *Index Medicus*).

*Text.* In writing for *PHR*, keep in mind that public health is an extremely broad field and most readers will be in parts of the field other than your own. Your introduction or lead is particularly important. Please define terms that are not universally understood and avoid the use of jargon.

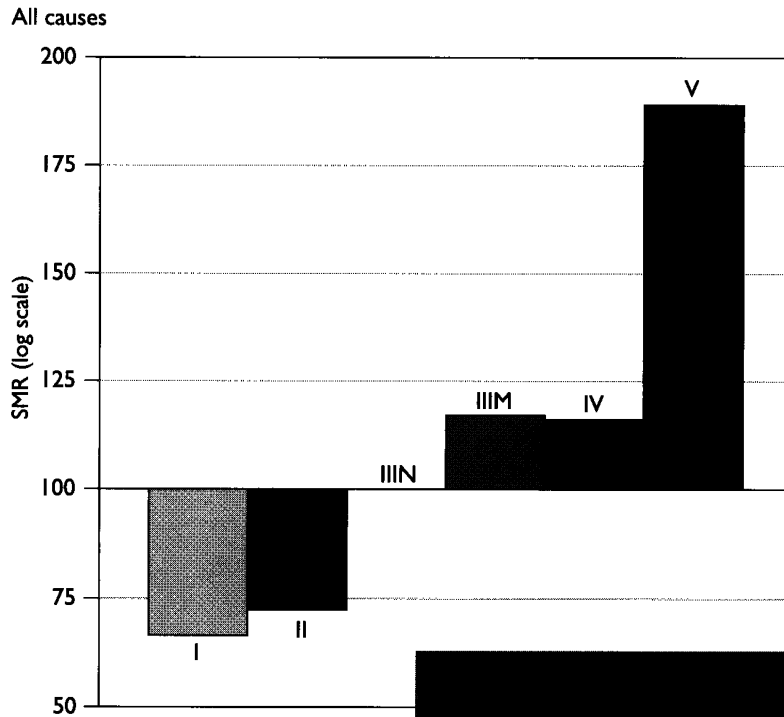
Scientific contributions should be divided into four categories: *Introduction*, *Methods*, *Results*, *Discussion*. In the *Methods* section, use active, not passive, voice and tell readers "who, what, when, where, and why." The findings reported in the *Results* section and the issues addressed in the *Discussion* section should parallel the procedures described in the *Methods* section.

*References.* Please consult the *Uniform Requirements* and recent issues of *PHR*. Citations of personal conversations or unpublished material should appear in the text.

## Copyrights

Simply, there are none for *PHR*. Everything published in the journal, because it is a U.S. government publication, is in the public domain. This does not absolve those who reuse material from *PHR* of the responsibility for proper citation and credit.

**Figure. Standardized Mortality Ratios by social class, men aged 20–64, all causes**



**Table. Standardized Mortality Ratios by social class, men aged 20–64, all causes**

Social class	SMR
I – Professional	66
II – Managerial and Technical	72
III N – Skilled (non-manual)	100
III M – Skilled (manual)	117
IV – Partly skilled	116
V – Unskilled	189
England and Wales	100
Number of deaths	175,847

England and Wales, 1991–93

# Health Inequalities



edited by  
Frances Dreyer and  
Margaret Whitehead

