

Public Health *Reports*

JOURNAL OF THE U.S. PUBLIC HEALTH SERVICE

Prevalence of Cavities in Children

521 COMMENTARY

Is It Still a Public Health Problem?

Philip R. Lee, Robert J. Collins

522 Dispelling the Cavity-free Myth

Burton L. Edelstein, Chester W. Douglass

The media, Congress, and even dental associations have been working under an erroneous assumption: 50 percent of children have never had a cavity. It's time to set the record straight.

531 COMMENTARY

This Is No Myth

L.J. Brown, A. Kingman, J.A. Brunelle, R.H. Selwitz

Reinventing Vital Statistics

534 The Information Revolution and
New Welfare Policies

Paul Starr, Sandra Starr

Information systems could advance public health as much as they have changed the face of banking, transport and sales.

Hospital/Nursing Home Dynamics

545 COMMENTARY

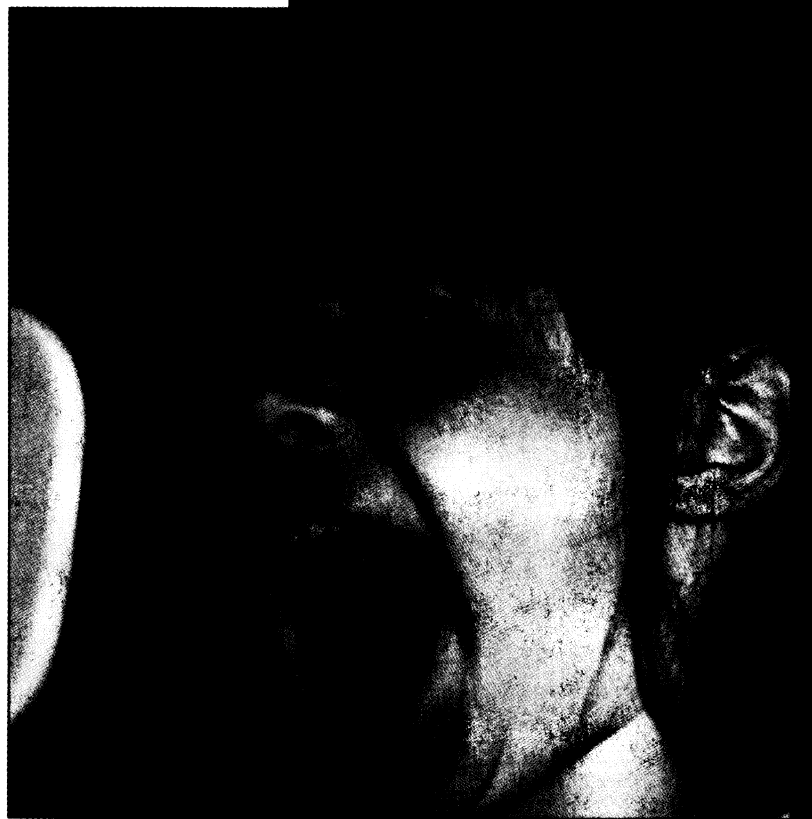
Insight into the Plight of "Dual Eligibles"

Helen L. Smits

546 Interactions Between Hospital
and Nursing Home Use

Marc P. Freiman, Christopher M. Murtaugh

New estimates suggest that improved nursing home care can significantly reduce Medicare hospital admissions.



*Dedicated to
Health
Professionals
Since 1878*

Public Health Reports

A Prognosis for North American Health Systems

555 COMMENTARY

Informed Joint Decision Making

Kenneth I. Shine

556 Our Health Paradigm in Peril

Paul A. Lamarche

Our current strategy for improving the health of our populations is failing. Why? and where do we go from here?

561 COMMENTARY

Afterword

Phyllis Freeman

SCIENTIFIC CONTRIBUTIONS

When Pilot Studies Don't Predict

562 COMMENTARY

Adopting Realistic Expectations

Claude Earl Fox

563 Translating Research into MCH Services:
Comparison of a Pilot Project Using Resource
Mothers and the Corresponding Large-Scale
Services Program

Mary M. Rogers, Mary D. Peoples-Sheps, et al.

Coronary Artery Disease in Blacks

570 COMMENTARY

Not Genes, Not Medical Care,
But How People Live

Lewis H. Kuller

572 Continued Adverse Trends in Coronary Heart
Disease Mortality Among Blacks, 1980–1991

Youlian Liao, Richard Cooper

580 Outbreak of *Shigella Flexneri* Linked to Salad
Prepared at a Central Commissary in Michigan

Ruth Ann Dunn, William N. Hall, et al.

587 Racial Variations in Spontaneous Fetal Deaths
at 20 Weeks or More in Upstate New York,
1980–86

Germaine M. Buck, James A. Shelton, et al.

593 Prevalence and Consequences of Smoking,
Alcohol Use, and Illicit Drug Use at Five
Worksites

Michael T. French, Gary A. Zarkin, et al.

600 Predictors of Maintained High-Risk Behaviors
Among Impoverished Women

Adeline M. Nyamathi, Crystal Bennett, et al.

607 Multidimensional Causal Model of Dental
Caries Development in Low-Income Preschool
Children

Mark D. Litt, Susan Reisine, Norman Tinanoff

618 Misunderstanding of 'Safer Sex' by
Heterosexually Active Adults

Neil S. Wenger, Francoise S. Kusseling, et al.

621 What Is the Addicts' Grapevine When There's
'Bad Dope'?—An Investigation in New Jersey

Robert C. Freeman, John F. French

625 Sustained Effects of Educating Retailers to
Reduce Cigarette Sales to Minors

Marianne B. Wildey, Susan I. Woodruff, et al.

DEPARTMENTS

514 PUBLIC HEALTH NEWS & NOTES

630 PHS CHRONICLES

Career of Surgeon General Parran

Lynne Page Snyder, PhD

633 OVERSEAS OBSERVER

Meta-analysis and the Cochrane Centers

Miriam Orleans

635 PUBLIC HEALTH & THE LAW

An Experiment in Tort Reform

Gemma Flamberg

639 INFORMATION TECHNOLOGY

A Disease Impact Assessment System

Francois Sainfort, Patrick L. Remington

645 NCHS DATA LINE

648 INFORMATION FOR AUTHORS