

National Health Service Corps

Eighteen communities throughout the nation have been provisionally selected on a pilot basis as the first to be served by the National Health Service Corps. These communities have been identified as areas with a critical shortage of health manpower and, depending on the success of recruiting efforts, Corps personnel will be assigned to them late in 1971.

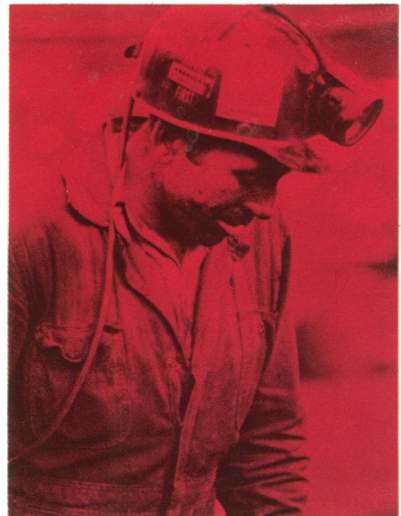
The National Health Service Corps, established pursuant to Public Law 89-623, authorizes assignment of commissioned officers and civil service personnel of the Public Health Service to areas of the United States where health services are inadequate because of critical manpower shortages. The Act authorizes the Secretary of Health, Education, and Welfare to designate critical areas on the basis of such criteria as ratio of physicians to population, number and type of health personnel other than physicians, availability and accessibility of health facilities, and health status indicators.

Physicians, dentists, and nurses as well as physician assistants, physical therapists, optometrists, psychologists, and pharmacists may be assigned, depending on the area's needs and the types of health personnel available locally. The intent is to assign, as far as possible, health teams of varying size rather than individual practitioners to provide health services tailored to the specific needs of the target community.

For the first year the new HSMHA program is authorized 660 positions for the nation; therefore only communities qualifying as critical areas will receive assistance.

Communities with a critical shortage of health personnel or persons interested in joining the Corps can obtain further information by writing to National Health Service Corps, 5600 Fishers Lane, Rockville, Md. 20852.

Cover—The National Institute for Occupational Safety and Health, Health Services and Mental Health Administration, has conducted X-ray examinations on approximately 50,000 underground coal miners. The continuing medical examination program, designed to detect the presence of "black lung" disease among miners, is a major requirement of the Federal Coal Mine Health and Safety Act. The program is conducted by the Institute's Appalachian Laboratory for Occupational Respiratory Disease.



HSMHA HEALTH Reports

FORMERLY PUBLIC HEALTH REPORTS

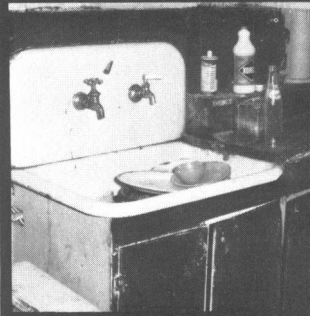
October 1971

Vol. 86 No. 10

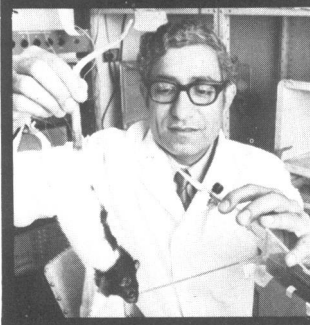
857



879



895



U.S. Department of Health, Education, and Welfare
Elliot L. Richardson, Secretary
Merlin K. DuVal, Jr., M.D., Assistant Secretary for Health and Scientific Affairs

Health Services and Mental Health Administration

Dr. Vernon E. Wilson, Administrator

HSMHA Health Reports

Managing Director Edward J. McVeigh, Assistant Administrator for Information, Health Services and Mental Health Administration

Keith Kost, M.P.H., Editor;
Marian K. Priest, Assistant Executive Editor;
Esther C. Gould, Managing Editor;

Cliff. Gangewere, Art Director. Opinions expressed are the authors' and do not necessarily reflect the views of HSMHA Health Reports or the Public Health Service. Trade names are used for identification only and do not represent an endorsement by the Public Health Service.

Address correspondence to:
Editor, HSMHA Health Reports
Room 4A-54, Parklawn Building
5600 Fishers Lane
Rockville, Md. 20852
Telephone:
Area code 301-443-2525

FEATURES

	Page
Review of 22 training programs for physician's assistants, 1969, Janet Hughbanks and Donald K. Freeborn _____	857
A multidisciplinary social casework center with a staff psychiatrist, John C. Ebie _____	863
Attempting a merger: Reorganizing health services in Los Angeles County, Dale Rogers Marshall _____	867
Health helpers in Erie County, N.Y., Erwin B. Montgomery _____	879

PROGRAMS, PRACTICES, PEOPLE

Dangers of exposure to carbon monoxide _____	888
Inclusive rate charging by hospitals _____	889
Review of proceedings of National Conference on Coal Miners' Health _____	890
Cause of amyloidosis—clues found by NIH researchers _____	892
TV repairmen studied for X-ray exposure _____	893
Lead poisoning and diabetes filmstrips _____	894
New drug for heroin withdrawal symptoms _____	895
Anti-tuberculosis drugs used in combinations _____	896
Aerosol deodorants may damage lungs _____	897
Current assessment of psychotropic drugs _____	898
The New York Hospital—older than the U.S.A. _____	898
Federal support to medical schools _____	899
Fels Research Institute gets Federal grant for cancer research _____	900
Behavioral Sciences and Mental Health—A new anthology _____	900
Program notes _____	901
Education notes _____	903